

DESERT WELL

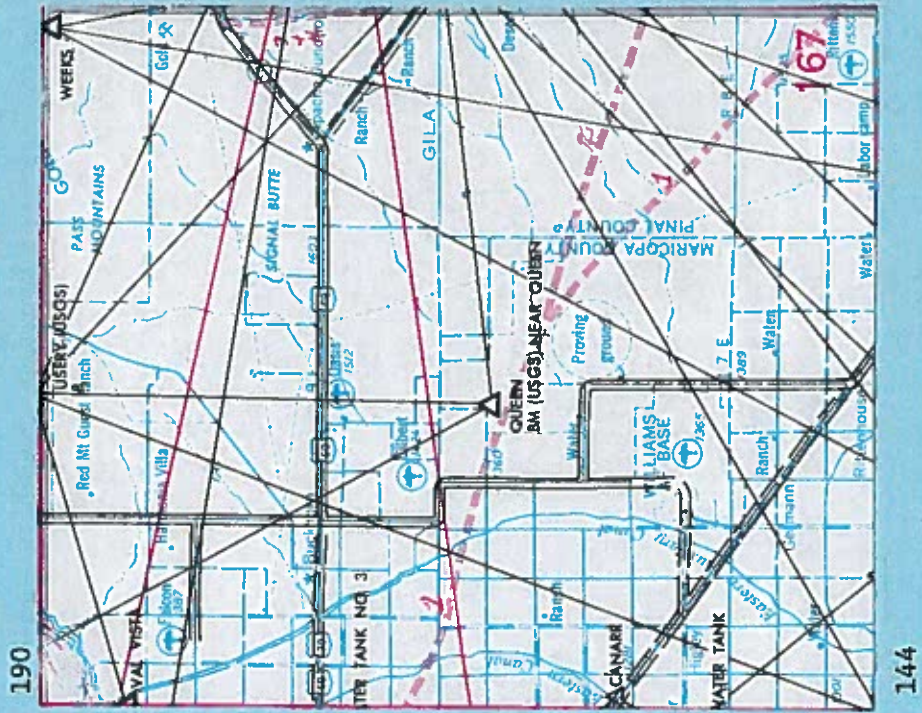
Lat. 33°15'  
Long. 111°30'

ARIZONA 167

C&GS 33 111 31

See Ariz. Hwy. - Job 269

- (1) T. Winsor 1899 8498
- (2) " " " "
- (3) " " " "
- (4) R. Phillips 1905 6624



33 111 3

33°15'  
111°30'

ARIZONA 167

**NAD 83 VALUES AVAILABLE**

*IN Mesa*

NAME

STATION

✓  
✓  
✓  
✓

Canarr  
Queen  
Bench Mark 1407  
USGS  
Weeks

1062  
1069  
1069  
1075

*8*

IND 83 VALUES AVAILABLE



JULY 1966  
 PUBLISHED AND PRINTED BY:  
 U. S. DEPARTMENT OF COMMERCE  
 COAST AND GEODETIC SURVEY  
 WASHINGTON D. C.

HORIZONTAL CONTROL DATA

by the  
 Coast and Geodetic Survey  
 NORTH AMERICAN 1927 DATUM

QUAD 33113 STATION 1062  
 ARIZ 33°00' TO 33°30'  
 LATITUDE 111°30' TO 112°00'  
 LONGITUDE 112-8 MESA  
 DIAGRAM NI 12-8

ARIZONA

167

ADJUSTED HORIZONTAL CONTROL DATA

330 151  
 111° 30

YEAR 1936

NAME OF STATION: CANARR LOCALITY: Papago Indian Reservation  
 STATE: ARIZ SOURCE: G-3083 FIELD SKETCH: ARIZ 14

GRID DATA	COORDINATES (7-4)	PLANE AZIMUTH & IONOSPHERIC	MARK
STATE: Ariz ZONE: G CODE: 0202	551,640.47 846,403.84	38°13'29" + 0 05 34	AZIMUTH MARK
STATE: ZONE: CODE:	  	  	  

GEODETIC DATA	POSITION		SECOND ORDER REVISION	ELEVATION METERS
	LATITUDE:	LONGITUDE:		
	33°19'16".075	111 44 51.363		

AZIMUTH MARK	TO STATION		GEODETIC AZIMUTH (From mark)	DISTANCE METERS
	THIRD-ORDER	THIRD-ORDER		
	38°19'03".1			

CANARR (Maricopa Co., Ariz., J. B., Jr., 1936; U.S.B.R., 1942)  
 supporting pipe bent over, reference marks intact.  
 U.S. DEPARTMENT OF COMMERCE - COAST AND GEODETIC SURVEY  
 RECOVERY NOTE, TRIANGULATION STATION

NAME OF STATION: CANARR YEAR: 1936 STATE: ARIZONA  
 ESTABLISHED BY: J. B., Jr. YEAR: 1956 COUNTY: MARICOPA  
 MONUMENT TYPE: A.M.S.

Detailed statement as to the fitness of the original description, including marks found, obstructions, changes made, and other pertinent facts  
 Station not found - indicated measurement would place mark on a  
 1/4 mile drive and as it projected above ground it is believed to be de-  
 stroyed.  
 Reference mark 2 was found badly bent over.  
 Reference mark 1 not found.  
 Azimuth mark found destroyed.

\* Names of chief of party should be inserted here. The office of the authority issuing the station should also be given at the bottom of the recovery note.  
 \*\* Name of State should be inserted here.

FILE COPY

JAN 1967

JULY 1966  
 PUBLISHED AND PRINTED BY:  
 U.S. DEPARTMENT OF COMMERCE  
 COAST AND GEODETIC SURVEY  
 WASHINGTON D.C.

# HORIZONTAL CONTROL DATA

by the  
 Coast and Geodetic Survey  
 NORTH AMERICAN 1927 DATUM

QUAD 33113 STATION 1063  
 ARIZ  
 LATITUDE 33°00' TO 33°30'  
 LONGITUDE 111°30' TO 112°00'  
 DIAGRAM NI 12-8 MESA

**Falpa** (Maricopa County, J. Bowie, Jr., 1936).—On the east side of State Highway No. 87, 4.6 miles south of Mesa. Station marks are bronze disks as described in notes Ia and Ia. Reference mark No. 1, a standard bronze reference disk, is cemented in culvert bulkhead at cross roads and is 28.406 meters (93.37 feet) from station in azimuth 0°02'. Reference mark No. 2, a standard bronze reference disk, is cemented in concrete highway opposite the station and is 11.980 meters (39.30 feet) from station in azimuth 90°18'. The azimuth mark is along the west side of Highway No. 87 near the west right-of-way boundary fence and about 0.3 mile from station in azimuth 177°41'14".

**FALPA** (Maricopa Co., Ariz., J. B., Jr., 1936; N.B.A., 1942)  
 --The station was found

In good condition as described.

## ADJUSTED HORIZONTAL CONTROL DATA

NAME OF STATION: **FALPA** LOCALITY: Papago Indian Reservation  
 STATE: **ARIZ** FIELD SKETCH: **ARIZ 14**  
 SECOND-ORDER Triangulation SOURCE: **G-3083** YEAR: **1936**

GRID DATA		COORDINATES (FAM)	PLANE AZIMUTH 6 SIDING ANGLE	MARK
STATE: <b>ARIZ</b>	X	<b>523,109.13</b>	<b>177°38'44"</b>	<b>AZIMUTH MARK</b>
ZONE: <b>C</b>	Y	<b>854,851.78</b>	<b>+ 0 02 30</b>	
CODE: <b>0202</b>				
STATE:	X			
ZONE:	Y			
CODE:				
GEODETIC DATA		POSITION		ELEVATION
		LATITUDE: <b>33°20'59".996</b>	NORTH WEST	METERS FEET
		LONGITUDE: <b>111°50'27".562</b>		
TO STATION		GEODETIC AZIMUTH (From mark)		DISTANCE
		<b>AZIMUTH MARK</b>		METERS
		<b>THIRD-ORDER 177°41'14".0</b>		

HORIZONTAL CONTROL DATA

By the  
 Coast and Geodetic Survey  
 NORTH AMERICAN 1927 DATUM

QUAD 33113 STATION 1068  
 ARIZ  
 LATITUDE 33°00' TO 33°30'  
 LONGITUDE 111°30' TO 112°00'  
 DIAGRAM NI 12-8 MESA

ADJUSTED HORIZONTAL CONTROL DATA

NAME OF STATION: MINERAL BUTTE YEAR: 1935

STATE: Ariz LOCALITY: Ajo to Tucson to Phoenix to Winkelman

FIELD NUMBER: Triangulation SOURCE: G-3058 FIELD SKETCH: ARIZ 9

FIELD DATA	COORDINATES (F.M.D.)	PLANE AZIMUTH (FROM BUSH)	NAME
STATE: Ariz	601,570.40	73°32'54"	AZIMUTH MARK (SACANTON WATER TANK)
ZONE: C	770,814.77	+0 10 52	
CODE: 0202			

STATE:	ZONE:	CODE:	POSITION	GEODETIC DATA	TO STATION	GEODETIC DATA	POSITION	SECOND IN METERS	ELEVATION METERS	FEET
Ariz	C	0202	73°48'46.7"	LATITUDE: 33°07'106.995 LONGITUDE: 111 35 05.719	AZIMUTH MARK (SACANTON WATER TANK)	LATITUDE: 33°07'106.995 LONGITUDE: 111 35 05.719	NORTH WEST	4.177 508	15.049 0	

NAME OF STATION:	RECOVERED BY:	YEAR:	STATE:	COUNTRY:
MINERAL BUTTE	E. B. L.	1935	ARIZONA	Pinel

U. S. DEPARTMENT OF COMMERCE - COAST AND GEODETIC SURVEY  
 RECOVERY NOTE: TRIANGULATION STATION

NAME OF STATION: MINERAL BUTTE  
 RECOVERED BY: E. B. L.  
 YEAR: 1935  
 STATE: ARIZONA  
 COUNTRY: Pinel

Detailed statement as to the losses of the original description, including marks found, striplogs, changes made, and other pertinent facts:  
 Station recovered in good condition.  
 Reference marks recovered as described.  
 The station is 26 feet S of center bush; 10 feet W of center bush;  
 67 feet E of center bush; 30 feet SSE of center bush.  
 Azimuth mark found as described.

**R**

MARK	REMARKS	RECOVERY OF SURVEY STATION
73°48'46.7"		33113-1068
4.177 508		
15.049 0		

MARK	REMARKS	RECOVERY OF SURVEY STATION
73°48'46.7"		33113-1068
4.177 508		
15.049 0		

THE STATION MARK, DISTANCE MARKS 106 AND 107, AND THE AZIMUTH MARK WERE RECOVERED AS DESCRIBED IN GOOD CONDITION.

MINERAL BUTTE (Pinel County, Ariz., E. B. L., 1935)--Station is located about 13 miles airline NW of Florence; about 4 miles airline N of Gila River; on western and slightly higher of two reddish buttes. Surface and reference marks are standard bronze disks in uncropping bedrock as described in notes 2 and 12a. Station reached as follows from Florence: from post office following main-traveled road, winding thru foothills 2.9 miles to a fork. Here take R fork and follow main road about 1/2 mile to 8. Turn off road and drive towards butte about 0.5 mile. From here climb to top and station. It is about a 20-minute pack.

OBJECT	DISTANCE METERS	DIRECTION
POSTEN	4.375	0°00'00"0
R. M. No. 1	N 10.476	225 07 51.8
R. M. No. 2	WSW 10.476	120 32 24.0
Water tank at Sacaton		140 45 13.6

MINERAL BUTTE (Pinel County, Ariz., E. B. L., 1935)--recovered, J. B. 1936)--Station was recovered as described by E. B. L. All marks were found in good condition. An azimuth mark was set about 1/4 mile N of station 35 feet N of road at a curve, being a standard tablet set in a 6-inch concrete post, projecting about 4 inches above ground.

Station description is as follows: station is located about 13 miles NW airline from Florence and about 4 miles NW airline from Gila River on western and slightly higher of two reddish buttes. Station is reached from Florence as follows: from post office follow Ariz. 187 and 87 W and N 22 miles. Turn R just after crossing Gila River on Sacaton bridge, passing to R of a large tin building and go 0.2 mile to RR tracks. Cross tracks and follow main road thru foothills 3.3 miles. Keep R fork, main-traveled road, and go E over divide 4.7 miles to azimuth mark at l of road on a small hill and a curve. From here station is about 1/2 mile S. Drive cross-country about 1/2 mile to N base of butte. Then pack SE about 200 yards to top of butte and station.

OBJECT	DISTANCE METERS	DIRECTION
RANDOLPH	0°00'00"0	
Azimuth (1936)	N 1/4 mile	167 30 18.6

MINERAL BUTTE (Pinel County Ariz., E. B. L., 1935)--recovered, F. G. J., 1936)--Station was recovered as described.

All marks were found to be in very good condition. Station is located about 13 miles NW of Florence, Ariz., and about 4 miles N of Gila River on most westerly and highest of two, reddish, rocky buttes. Station is reached from Chandler, Ariz., by going S on Ariz. 87, 18.5 miles to Oibers, Ariz., where Sacaton bridge crosses Gila River. Just before crossing bridge, leave highway, turn L on a graded, dirt road, and go 0.2 mile to RR tracks. Thence cross tracks and follow main-traveled road thru foothills 3.3 miles to a fork. Thence take R fork and continue easterly 0.6 mile to another fork. Thence take R fork, main-traveled road, and continue 4.1 miles to a curve in road on top of a slight hill. Azimuth mark is about 12 paces N of road at this point. At this point leave road and drive across country southerly toward butte, which is about 1/2 mile distant. Drive to base of butte and end of track travel. From here pack up butte to highest point and station site. Reference mark No. 1 is NW of station and about 6 feet lower in elevation. Reference mark No. 2 is WSW of station and about 4 feet lower in elevation. Azimuth mark is NW of station and about 250 feet lower in elevation.

OBJECT	DISTANCE METERS	DIRECTION
SAVANNAH	0°00'00"0	
R. M. No. 1	foot 14.438	40 16 39
R. M. No. 2	WSW 34.362	295 41 51
Azimuth mark NW	approx. 1/2 mile	34 59 04.0

Note: direction to azimuth mark and distance to reference mark No. 1 given in previous descriptions are in error. Above direction and measurement are correct.

ARIZONA 167

HORIZONTAL CONTROL DATA

QUAD 31113 STATION 1069  
 ARIZ 33°00' TO 33°30'  
 LATITUDE 111°30' TO 112°00'  
 LONGITUDE DIAGRAM NI 12-8 MESA

330 15'  
 11 30

ADJUSTED HORIZONTAL CONTROL DATA

NAME OF STATION: QUEEN  
 STATE: Ariz LOCALITY: Queen Creek Area  
 Second-order Triangulation SOURCE: G-4029  
 YEAR: 1938  
 FIELD SKETCH: ARIZ 17

GRID DATA	COORDINATES (F-M)	PLANE AZIMUTH FOR $\Delta$ ANGLE	MARK
STATE: Ariz ZONE: C CODE: 0202	X 583,265.12 Y 860,325.69	325°44'25" + 0 09 00	AZIMUTH MARK

GEODETIC DATA	POSITION	SECONDS IN METERS	ELEVATION METERS FEET
STATE: Ariz ZONE: C CODE: 0202	LATITUDE: 33°21'53".163 LONGITUDE: 111 38 38.207	NORTH WEST	

TO STATION	GEODETIC AZIMUTH (From south)	DISTANCE METERS
	THIRD-ORDER 325°53'24".6	

AZIMUTH MARK

330 15'  
 11 30

ADJUSTED HORIZONTAL CONTROL DATA

NAME OF STATION: BENCH MARK 1407 FERNX USGS  
 STATE: Ariz LOCALITY: Queen Creek Area  
 Second-order Traverse SOURCE: G-4029  
 YEAR: 1938  
 FIELD SKETCH: ARIZ 17

GRID DATA	COORDINATES (F-M)	PLANE AZIMUTH FOR $\Delta$ ANGLE	MARK
STATE: Ariz ZONE: C CODE: 0202	X 583,210.98 Y 860,401.35	+ 0 09 00	

GEODETIC DATA	POSITION	SECONDS IN METERS	ELEVATION METERS FEET
STATE: Ariz ZONE: C CODE: 0202	LATITUDE: 33°21'53".913 LONGITUDE: 111 38 38.843	NORTH WEST	

TO STATION	GEODETIC AZIMUTH (From south)	DISTANCE METERS

AZIMUTH MARK

330 15'  
 11 30

ADJUSTED HORIZONTAL CONTROL DATA

NAME OF STATION: BENCH MARK 1407 FERNX USGS  
 STATE: Ariz LOCALITY: Queen Creek Area  
 Second-order Traverse SOURCE: G-4029  
 YEAR: 1938  
 FIELD SKETCH: ARIZ 17

JULY 1966  
 PUBLISHED AND PRINTED BY:  
 U. S. DEPARTMENT OF COMMERCE  
 COAST AND GEODETIC SURVEY  
 WASHINGTON D. C.  
 Revis ed NOV 1975

QUEEN (Maricopa County, Ariz., F.G.J., 1938)--Located about 3.5 miles S of U.S.60 and about 2.3 miles NW of Desert Wells. Reached from Mesa by going W on U.S.60, 8.0 miles to Buckhorn Shell Station (Gasoline station combined with a curio shop and bar); thence continue E on U.S.60, 1.0 mile to a graded, dirt road R; here turn R and go S 2.5 miles to a T-cross road; here turn L thru R and gate and go 0.3 mile to a corner of a field on R; here turn R and go S about 100 yards to a track road SE which follows a telephone line; thence follow track road SE along telephone line 1.1 miles to a wire gate in a N-S fence line; here turn R before going thru gate and follow a track road S along fence 0.5 mile to another wire gate in same fence; thence turn L thru gate and go E 1.0 mile thru a lane and to a fence corner on L at station.  
 Station sets inside fence corner, 4.2 feet N of E-W fence, and 5.2 feet W of N-S fence.  
 Azimuth mark is 0.3 mile SE of station, at telephone line. It is about 12 feet E of a telephone pole.  
 Station, azimuth, and reference mark No.1 project about 3 inches from ground. Reference mark No.2 is a U.S.G.S. bench mark welded into top of a 2.5-inch iron pipe which projects about 6 inches. Its distance from reference mark No.1 is 79.680 feet (24,288 meters).  
 Surface (station), underground, reference No.1, and azimuth marks are standard bronze disks set in concrete as described in notes 1a, 7a, and 11a.  
 VERB: DISTANCE meters  
 Azimuth mark SE approx. 0.3 mile 174 11 44.5  
 R.M.No.1 W 35.677 10.876  
 U.S.G.S. BM NW 93.089 28.370  
 DIRECTION 0°00'00.0  
 174 11 44.5  
 295 34 23.8  
 352 52 12.0

RECOVERY NOTE, TRIANGULATION STATION

NAME OF STATION: QUEEN BENCH MARK ALSO   
 ESTABLISHED BY: F.G.J. YEAR: 1938 STATE: ARIZONA  
 RECOVERED BY: T. TAYLOR YEAR: 1974 COUNTY: MARICOPA  
 AIRLINE DISTANCE AND DIRECTION FROM NEAREST TOWN: 7 miles southwest Apache Jct. -  
 HEIGHT OF TELESCOPE ABOVE STATION MARK 5 FEET. HEIGHT OF LIGHT ABOVE STATION MARK 5 FEET.

OBJECT	BEARING	DISTANCE		DIRECTION
		FEET	METERS	
ROADSIDE 1938				
RM 4	N	48.30	14.721	00 00 00.0
RM 3	NE	46.94	14.309	183 21 07.1
				283 22 17.8

The underground station mark and Azimuth mark were recovered and found in good condition. The surface station mark, reference mark 1 and 2 had been destroyed. The station was remonumented on the original position at this time and reference marks 3 and 4 were established. The station mark is a standard disk stamped Queen 1938-1974 and is set in a 12 inch diameter concrete monument. The station is set in a 12 inch diameter barb-wire fence and 6 feet west of north-south barb-wire fence.  
 Reference mark 3 is a standard disk stamped QUEEN RM 3 1938 1974 and is set in a 12 inch diameter concrete monument. The mark is 1 foot west of a north-south fence line, 37 feet east of a north-south concrete irrigation ditch and 1 foot north-west of a witness post which is located in north-south fence line.  
 Reference mark 4 is a standard disk stamped QUEEN RM 4 1938 1974 and is set in a 12 inch diameter concrete monument. The mark is 27 feet southwest of the south end of a concrete irrigation ditch and 1 foot north of station post which is located in east-west fence. To reach the station from US 60.80 and B9 (Apache Trail) and Ellsworth Rd., go south on Ellsworth Rd. to Baseline Rd. and turn right (west) on Baseline Rd. for 1 mile to an irrigation pump on the left. Turn left and go to the end of the field to the station in the field corner marked by witness post.

(R.L.E., DMAC Det 1 GSS, 1975)--Station and RM 3 and RM 4 were found in good condition.

Computed from station QUEEN  
 R. M. 1407 PHNX (U. S. G. S.) (Maricopa County, F. G. Johnson, 1088);  
 See description of Queen.

FILE COPY  
 MAY 26 1976

JULY 1966 AND PRINTED BY:  
 U.S. DEPARTMENT OF COMMERCE  
 COAST AND GEODETIC SURVEY  
 WASHINGTON D. C.

HORIZONTAL CONTROL DATA

by the  
 Coast and Geodetic Survey  
 NORTH AMERICAN 1927 DATUM

QUAD 331113 STATION 1074  
 ARIZ  
 LATITUDE 33°00' TO 33°30'  
 LONGITUDE 111°30' TO 112°00'  
 DIAGRAM NI 12-8 MESA

ARIZONA

167

~~TOWER (Havlicopa County, Ariz., P.O.J. 1938)--Station is located 5 miles E and 4 miles S of Chandler, in SW 1/4 of Sec. 16, T 2 S, R 6 E, on S bank of an irrigation ditch which runs E and W, and 1/4 mile E of road.~~

~~Barfaco underground, and reference marks are standard bronze disks in concrete as described in notes Ia, 7a, and 11a. Azimuth mark is located 1/4 mile W and 0.7 mile N of station, set in concrete abutment of irrigation ditch, 5 feet S of a power pole, 33 feet W of center line of road, and 24 feet E of a pump house.~~

~~Station is reached from Chandler High School by going S 0.15 mile to E. Cleveland Street; thence E, E, on E. Cleveland Street 3.0 miles to cross road; turn N, N, and go 3.0 miles to cross road; turn U, E, and go 2.0 miles to cross road; turn R, B, and go 1.0 mile to a slide road on R just after crossing an irrigation ditch; turn L, E, on track road and go 0.25 mile to station.~~

OBJECT	DISTANCE	DIRECTION
VERDE 1935	feet	0°00'00"0
R.W.No.1	60.970	72 30 03
R.W.No.2	61.435	273 27 32
Azimuth mark	0.8 mile	247 45 09.2

U.S. DEPARTMENT OF COMMERCE - COAST AND GEODETIC SURVEY  
 RECOVERY NOTE, TRIANGULATION STATION

Name of Station: TOWER  
 Reestablished by: P.G.J.  
 Recovered by: A.M.S.  
 Year: 1938 Base: Arizona  
 Year: 1958 Control: LATIDOPA

Detailed statement as to the status of the original description, including marks found, description, changes made, and other pertinent facts:  
 Station found destroyed.  
 Reference mark 1 found in good condition.  
 Reference mark 2 not found.  
 Azimuth mark found in good condition.

\* Names of kind of party should be inserted here. The officer who actually visited the station should sign by name at the end of the recovery note.  
 Note:—One of these forms must be used for every station recovered.

ADJUSTED HORIZONTAL CONTROL DATA

NAME OF STATION: TOWER LOCALITY: Queen Creek Area  
 STATE: Ariz SOURCE: G-4029  
 Second-order Triangulation FIELD SKETCH: ARIZ 17  
 YEAR: 1938

GRID DATA	COORDINATES (F.M.D.)	PLANE AZIMUTH # FROM ANGLE	MARK
STATE: Ariz	E 550,558.51	163°35'06"	AZIMUTH MARK
ZONE: G 202	N 817,906.84	+ 0 05 26	
STATE: Ariz	E		
ZONE: G 202	N		

GEODETIC DATA	POSITION	SECTION IN METERS	ELEVATION METERS
LATITUDE: 33°14'54".122			
LONGITUDE: 111°45'04".647			

AZIMUTH MARK 1

THIRD-ORDER  
 163°40'32".4

TO STATION	DISTANCE METERS	LOCATION (Name)	DISTANCE METERS



167 ARIZONA

JULY 1966  
PUBLISHED AND PRINTED BY:  
U. S. DEPARTMENT OF COMMERCE  
COAST AND GEODETIC SURVEY  
WASHINGTON D. C. 20540

# HORIZONTAL CONTROL DATA

QUAD 331113 STATION 1075  
ARIZ  
LATITUDE 33°00' TO 33°30'  
LONGITUDE 111°30' TO 112°00'  
DIAGRAM NI 12-8 MESA

by the  
Coast and Geodetic Survey  
NORTH AMERICAN 1927 DATUM

## WEEKS (Maricopa County, Ariz., F. G. J., 1938)

about 6 miles airline NNE of Apache Junction and 0.6 mile SW of Cottonwood Springs on highest point on W end of first ridge W of Cottonwood Springs. It is on a rough, rocky, flat-top butte with hill runs E and W and steep but gradual slope to N and E. Top of hill runs E and W and is about 100 feet long in other direction N and S it is about 25 feet wide.

Surface and reference marks are standard bronze disks in out-cropping bedrock as described in notes 2 and 12a; azimuth mark is a standard bronze disk in a boulder as described in note 12c.

Reached from Mesa as follows: Go E on U.S. 60, 18 miles to Apache Junction; turn L, NE on Ariz. 68 and go 3.2 miles to a power line crossing road; turn L on track just before crossing power line and go 0.3 mile to road coming in from R; continue 0.2 mile to junction of power lines and E-W fence about 100 yards beyond; pass thru gate and follow main track road northerly 0.35 mile to fork; take R fork, still northerly, keeping to R of old mine, and go 0.55 mile to National Forest fence and gate; pass thru gate and continue 2.3 miles to a sharp dip in road; just on N side of this dip in road hill keeping just N of wash or draw, turn L, westerly, and follow along azimuth mark in large boulder. Here pack westerly continuing along R or N side of wash to a saddle about 0.2 mile distant; then pack to NW about 0.2 mile to smaller saddle; thence W around N side of rock backbone up short steep climb about 200 yards to station. Azimuth as noted is at end of trunk trail, in a large boulder about 3 feet high, 4 feet long, and 2 1/2 feet thick, about 30 yards N of wash or draw that goes up towards first saddle on way to station.

OBJECT DISTANCE  
ROADSIDE feet meters  
R.M.No.2 SSW 14.080 4.294  
R.M.No.1 ExS 9.756 2.972  
Azimuth mark E approx. 0.35 mile 295 03 07.6  
Height of telescope above station mark - 1.4 meters.

## ADJUSTED HORIZONTAL CONTROL DATA

NAME OF STATION: WEEKS  
STATE: Ariz  
LOCALITY: Queen Creek Area  
Second-Order Triangulation source: G-4029  
FIELD SKETCH: ARIZ 17  
YEAR: 1938

GRID DATA	COORDINATES (F.M.)	PLANE AZIMUTH # OR DIAGM ANGLE	MARK
STATE: ARIZ ZONE: C CODE: 0202	X 624,319.52 Y 908,096.02	284°04'21" + 0 13 30	AZIMUTH MARK
STATE: ZONE: CODE:	X Y		
GEODETIC DATA	POSITION	SECOND IN METERS	ELEVATION METERS FEET
	LATITUDE: 33°29'44".901 LONGITUDE: 111 30 31.928	NORTH WEST	
TO STATION		GEODETIC AZIMUTH (From center)	DISTANCE METERS
AZIMUTH MARK		THIRD-ORDER 284°17'51.76	

FILE COPY

33°15'  
111°30'

ARIZONA 167

Index

Station

Project

EM "A 107"

Florence "B"

Number Three

--

Number Four

--

Florence "B" Project Master in ARIZONA 119 - Book: PH 1100

Arizona (167)

Pinal County

BM "A 107"

1927 N.A.D. (Unadj.)

R.W. Hendrickson, 1965

Book: PH 1100

Described in U.S. Coast and Geodetic Survey level line, Arizona 331113, line 117 as follows:

"A 107.-- 3.2 mi. SE. along U.S. Highway 60 from Apache Junction, Pinal County, 0.4 mi. W. of a concrete bridge, 0.1 mi. E. of a concrete culvert, near an old dirt rd. intersection, 61 ft. S. of the centerline of the highway, and 55 ft. N. of the centerline of the dirt rd. A standard disk, stamped "A 107 1935" and set in the top of a concrete post."

Located about 15 mi. NW. of Florence Junction; about 3.5 mi. SE. of Apache Junction on the S. side of U.S. Highways 60, 70, 80, and 89.

Station mark: Standard USC&GS bench mark stamped "A 107 1935" and set in concrete post projecting 0.6 ft. above ground.

Signal: White flag over red cross-target on 2 x 2 pole centered over station mark.

Signal Data:	TWF	8.4 ft.
	BWF	7.3
	TRXT	6.2
	BRXT	2.9

Photo No.: No photo coverage

ARIZONA ZONE CENTRAL

X=625,831.1

Y=869,074.2

$\Delta \alpha = +0^{\circ}13'37''$

Elevation: 1697.818 ft. ✓  
(Second order leveling by  
USC&GS, Arizona, 331113)

	LAT. 33° 23' 18.339"	LONG. 111° 30' 15.906"
STATION	AZIMUTH	BACK AZIMUTH. DISTANCE
Superstition (USGS) (C&GS)	255° 31' 47.361"	75° 35' 14.133" 32885.63
Roadside (C&GS)	293° 7' 6.585"	113° 7' 49.339" 7164.30

NAD 83 VALUES AVAILABLE

FILE COPY

4/8/65 slh

slh

✓

33 15  
111 30

Station: NUMBER THREE

County: Maricopa

State: Ariz. (167)

Observer: T. M. Bannon

Year: 1904-5 Datum: 1927 N.A.D. (unadjusted) (Revised 1953)

Description:

Books: 3776-3779

Described in U.S.G.S. Bulletin No. 276, page 173, as follows:

"A three-point station on a small isolated knob on the north side of the Mesa-Goldfield road, 17 miles east of Mesa and 5 miles west of Goldfield.

"Station mark: A bronze tablet cemented into solid rock under a small rock monument."

*Not plotted on CD  
gax  
3-Point  
NO check*

FILE COPY

### NAD 83 VALUES AVAILABLE

[Latitude 33 26 19.326 Longitude 111 38 23.478 ]

To Station—	Azimuth			Back Azimuth			Distance	
	°	'	"	°	'	"	Log. Meters	Feet
Usery	179	55	54	359	55	53	3.83499	22,438
Number Four	288	09	48	108	11	10	3.61165	13,416
							3/19/53 cg ✓	



Station: NUMBER FOUR (Not Occupied)

County: Maricopa

State: Ariz. (167)

Observer: T. M. Bannon

Year 1904-5 Datum: 1927 N.A.D. (unadjusted) (Revised 1953)

Description:

Books: 3776-3779

Described in U.S.G.S. Bulletin 276, page 174, as follows:

"On a long malpais hill 12 miles northeast of Mesa, 2 miles northwest of the crossing of Usery Pass--Desert Well and the Mesa--Goldfield roads.

"Station mark: A bronze tablet centered under a small rock monument."

*Not plotted used  
with checked position  
JES*

**FILE COPY**

**NAD 83 VALUES AVAILABLE**

[Latitude 33 25 37.924

Longitude 111 35 53.074 ]

To Station—	Azimuth ° ' "	Back Azimuth ° ' "	Distance	
			Log. Meters	<del>Feet</del> Feet
Usery	154 23 14	334 21 50	3.95423	29,526
Superstition	275 31 47	95 38 19	4.26726	60,708
			3/19/53 cg ✓	

# ARIZONA TEST AREA

(MARKED OR MONUMENTED STATIONS)

STATION

AJ-1, AMS 1960

167  
B

TYPE OF MARK Disk	STAMPING ON MARK See Description	AGENCY (CAST IN MARK) C. of E.
LATITUDE 33°29'43." 107 ✓	LONGITUDE 111°41'00."401 ✓	DATUM 1927 NORTH AMERICAN DATUM
NORTHING 3,706,215.13 ✓ M.	EASTING 436,512.56 ✓ M.	GRID AND ZONE U.T.M. 12
NORTHING (Y) 907,791.84 ✓ Ft.	EASTING (X) 571,099.22 ✓ Ft.	GRID AND ZONE ARIZONA STATE PLANE-CENTRAL

ELEVATION 1538.87 FEET 469.05 METERS
ORDER THIRD
DATUM SEA LEVEL DATUM OF 1929
ESTABLISHED BY-AGENCY-DATE

TO OBTAIN UNIVERSAL TRANSVERSE MERCATOR	GRID AZIMUTH, ADD 180° 22' 37.86" ✓	TO THE GEODETIC AZIMUTH
TO OBTAIN ARIZONA STATE PLANE (CENTRAL ZONE)	GRID AZIMUTH, ADD 359° 52' 16.65" ✓	TO THE GEODETIC AZIMUTH

OBJECT	GEODETIC AZIMUTH	BACK AZIMUTH	GEODETIC DISTANCE METERS	U.T.M. GRID DIST. METERS	S.P.C. GRID DIST. FEET
NAD 83 VALUES AVAILABLE					

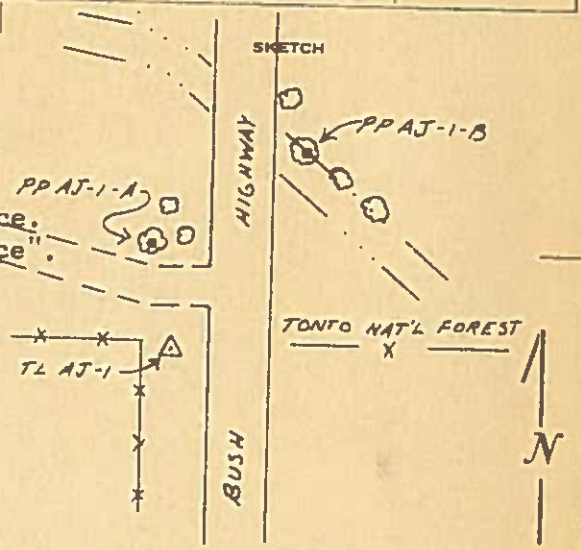
DESCRIPTION

T-2-N; R-G-E; Section 25; Near N.E. corner

The mark is a Corps of Engineers, U.S. Army disk set in the top of a concrete post 10 inches in diameter and projecting 0.3 foot above the surface. The mark is stamped "TL-AJ-1 1960 Army Map Service".

The station is located 55.5 feet west of the centerline of Bush Highway; 3.8 feet east of the fence corner; 69 feet south of the centerline of a driveway to the west.

To reach from the intersection of North Country Club Drive and U.S. Highways 60, 70, 80 and 89 (also West Main Street) in Mesa, Manicopa County, Arizona, go east on West Main Street for about 9.0 miles to the intersection of Bush Highway. Turn left and go north for 5.5 miles to an east-west fence-line just south of a driveway to the west and the station site.



FILE COPY

DATE

USERS OF THIS STATION ARE REQUESTED TO COMPLETE A RECOVERY OF SURVEY STATION CARD AND FORWARD TO COMMANDING OFFICER, ARMY MAP SERVICE, CORPS OF ENGINEERS, U.S. ARMY, WASHINGTON 25, D. C.

ARMY MAP SERVICE, CORPS OF ENGINEERS, U. S. ARMY



# ARIZONA TEST AREA

(MARKED OR MONUMENTED STATIONS)

STATION

AN-1, AMS 1960

167  
A

TYPE OF MARK Disk	STAMPING ON MARK See Description	AGENCY (CAST IN MARK) C. of E.	ELEVATION 2131.85 FEET 649.79 METERS
LATITUDE 33°29'41."015	LONGITUDE 111°37'03."992	DATUM 1927 NORTH AMERICAN DATUM	ORDER THIRD
NORTHING 3,706,112.49	EASTING 442,612.50	GRID AND ZONE U.T.M. 12	DATUM SEA LEVEL DATUM OF 1928
NORTHING (Y) 907,631.71	EASTING (X) 591,119.56	GRID AND ZONE ARIZONA STATE PLANE-CENTRAL	ESTABLISHED BY-AGENCY-DATE AMS DEC 1959

TO OBTAIN UNIVERSAL TRANSVERSE MERCATOR GRID AZIMUTH, ADD 180° 20' 27.37" TO THE GEODETIC AZIMUTH

TO OBTAIN ARIZONA STATE PLANE (CENTRAL ZONE) GRID AZIMUTH, ADD 359° 50' 06.19" TO THE GEODETIC AZIMUTH

OBJECT	GEODETIC AZIMUTH	BACK AZIMUTH	GEODETIC DISTANCE METERS	U.T.M. GRID DIST. METERS	S.P.C. GRID DIST. FEET
CRISMAN	04-06-33.20	184-06-24.82	5480.1638	5478.1964	17978.4720
NAD 83 VALUES AVAILABLE					

DESCRIPTION

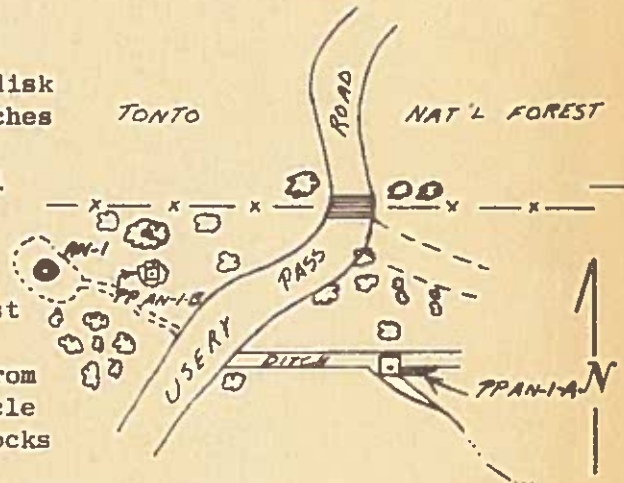
T-2-N; R-7-E; Section 27; near N.E. corner

The mark is a Corps of Engineers, U.S. Army disk centered in the top of a concrete post 10 inches in diameter, projecting 0.3 foot above the ground surface. The mark is stamped "TL AN-1 1960 Army Map Service."

The station is located 97 feet south of the east-west fenceline; 48.6 feet south southeast of the base of a large Sahuaro Cactus; about 450 feet west along an east-west fenceline from the north-south road; in the center of a circle 6 feet in diameter, encircled by a band of rocks 4 feet wide, painted black.

To reach from the intersection of North Country Club Drive and U.S. Highways 60, 70, 80 and 89 (also West Main Street) in Mesa, Maricopa County, Arizona, go east for 9.0 miles to the intersection of Bush Highway. Turn left and go north on Bush Highway for 0.5 mile to Usery Pass Road, turn right and go northeast on Usery Pass Road for 6.7 miles to a steel cattle guard and an east-west fenceline at the boundary of the Tonto National Forest, then west along east-west fenceline to the station site.

SKETCH



FILE COPY

DATE

USERS OF THIS STATION ARE REQUESTED TO COMPLETE A RECOVERY OF SURVEY STATION CARD AND FORWARD TO COMMANDING OFFICER, ARMY MAP SERVICE, CORPS OF ENGINEERS, U.S. ARMY, WASHINGTON 25, D. C.

ARMY MAP SERVICE, CORPS OF ENGINEERS, U. S. ARMY

# ARIZONA TEST AREA

(PHOTO-IDENTIFICATION INFORMATION)

STATION

AN-1, AMS 1960

LATITUDE

33° 29' 41.015"

LONGITUDE

111° 37' 03.992"

DATUM

1927 NORTH AMERICAN DATUM

ELEVATION 2131.85 FEET

649.79 METERS

NORTHING

3,706,112.49 M.

EASTING

442,612.50 M.

GRID AND ZONE

U.T.M. 12

ORDER

THIRD

DATE ESTABLISHED

DEC. 1959

NORTHING (Y)

907,631.71 FT.

EASTING (X)

591,119.56 FT.

GRID AND ZONE

ARIZONA STATE PLANE-CENTRAL

DATUM

SEA LEVEL DATUM OF 1929

DESCRIPTION

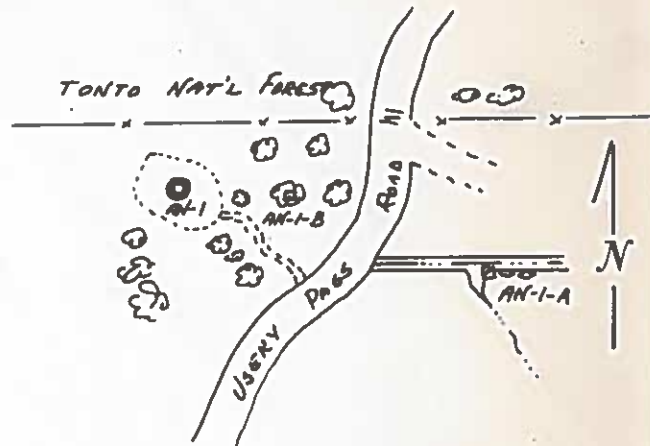
Center of circular panel.

The mark is the center of a circle 6 feet in diameter encircled by a band of rocks 4 feet wide and painted black.

**NAD 83 VALUES AVAILABLE**

**FILE COPY**

SKETCH



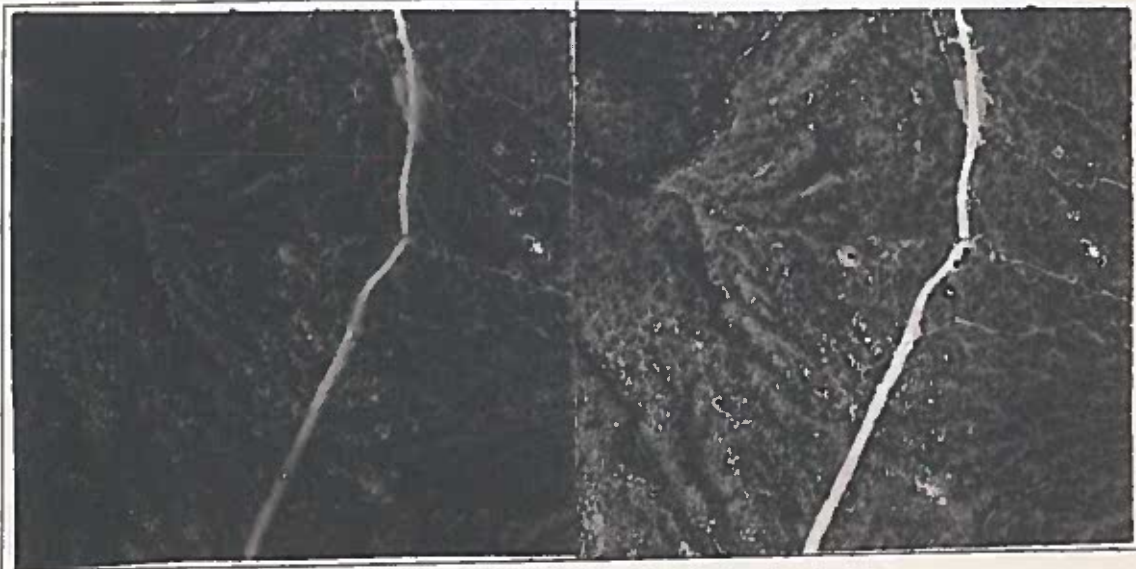
APPROX. SCALE OF PHOTOS

1 : 10,000

DATE OF PHOTOGRAPHY

16 SEPT. 1961

STEREO-GRAM



DISTANCE

100 FT. N.

100 FT. S.

ELEVATION

2125.8 FT.

2127.3 FT.

DISTANCE

100 FT. E.

100 FT. W.

ELEVATION

2126.7 FT.

2136.1 FT.

DATE



# ARIZONA TEST AREA

(PHOTO-IDENTIFICATION INFORMATION)

LATITUDE <b>33° 29' 43.972"</b>	LONGITUDE <b>111° 41' 00.428"</b>
NORTHING <b>3,706,241.78 M.</b>	EASTING <b>436,512.03 M.</b>
NORTHING (Y) <b>907,879.25 FT.</b>	EASTING (X) <b>571,096.73 FT.</b>

STATION  
**PP AJ-1-A, AMS 1960**

DATUM 1927 NORTH AMERICAN DATUM	ELEVATION <b>1536.4 FEET</b> <b>468.3 METERS</b>
GRID AND ZONE U.T.M. 12	ORDER <b>FOURTH</b>
GRID AND ZONE ARIZONA STATE PLANE-CENTRAL	DATE ESTABLISHED <b>1960</b>
	DATUM SEA LEVEL DATUM OF 1929

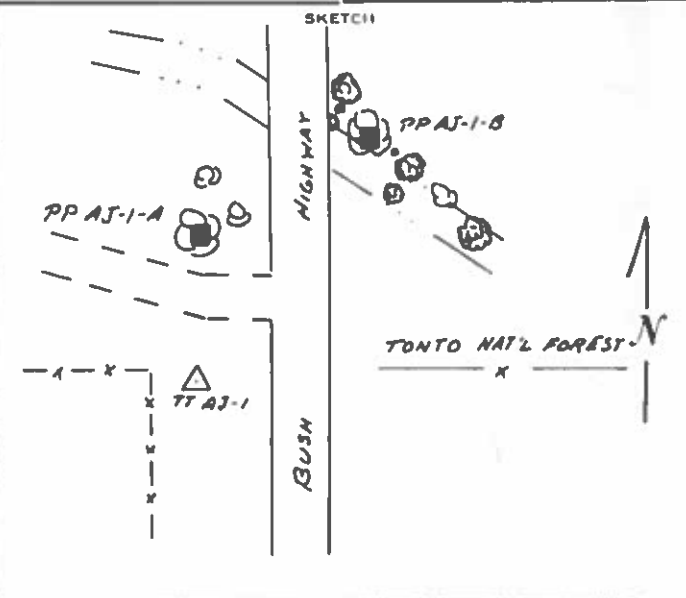
DESCRIPTION

Center of small 6 foot high creosote bush.

PP is 87.5 feet in geodetic azimuth 178°31'20" from AJ-1.

**NAD 83 VALUES AVAILABLE**

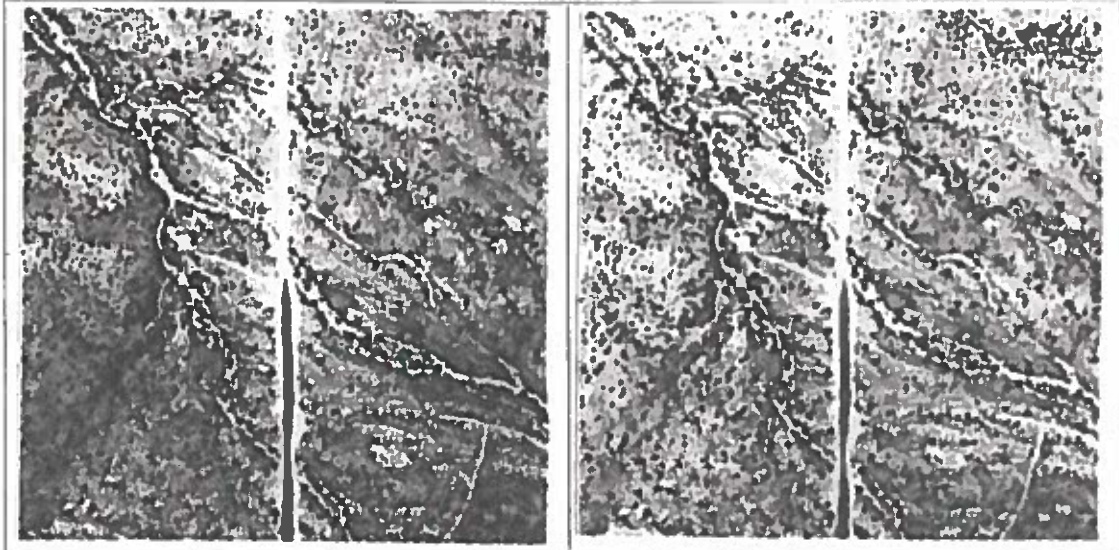
**FILE COPY**



APPROX. SCALE OF PHOTOS  
**1:10,000**

DATE OF PHOTOGRAPHY  
**16 SEPT. 1961**

STEREO GRAM



DISTANCE  
25 FT. N.  
18 FT. S. & W. of LANE #12

ELEVATION  
**1534.9 FT.**  
**1537.4 FT.**

DISTANCE  
47 FT. E. & NS RD.  
100 FT. W.

ELEVATION  
**1535.4 FT.**  
**1534.1 FT.**

DATE

# ARIZONA TEST AREA

(PHOTO-IDENTIFICATION INFORMATION)

STATION

PP AJ-1-B, AMS 1960

LATITUDE <b>33° 29' 45." 115'</b>	LONGITUDE <b>111° 40' 59." 414'</b>	DATUM 1927 NORTH AMERICAN DATUM	ELEVATION <b>NO ELEV.</b>	FEET METERS
NORTHING <b>3, 706, 276. 81' M.</b>	EASTING <b>436, 538. 43' M.</b>	GRID AND ZONE U.T.M. 12	ORDER	DATE ESTABLISHED
NORTHING (Y) <b>907, 994. 97' FT.</b>	EASTING (X) <b>571, 182. 34' FT.</b>	GRID AND ZONE ARIZONA STATE PLANE-CENTRAL	DATUM SEA LEVEL DATUM OF 1929	

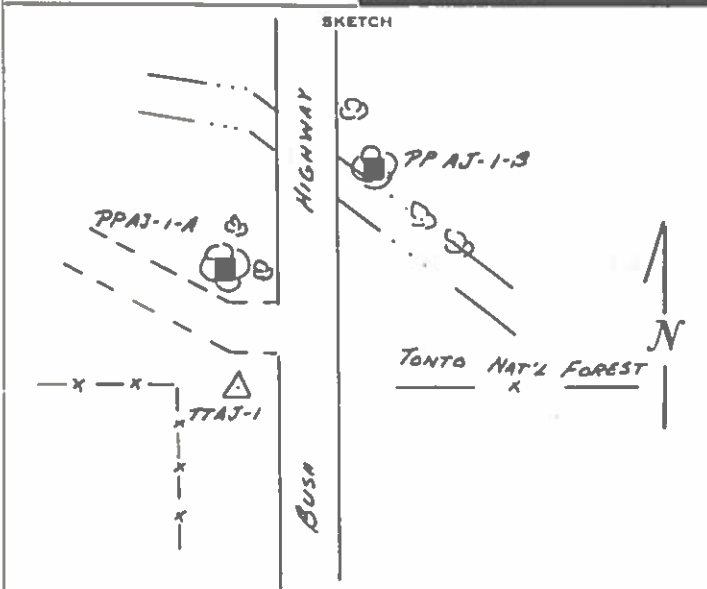
DESCRIPTION

Center of large ironwood tree at N.E. edge of large drain and just east of road.

PP is 219.5 feet in geodetic azimuth 202°22'45" from AJ-1.

**NAD 83 VALUES AVAILABLE**

**FILE COPY**



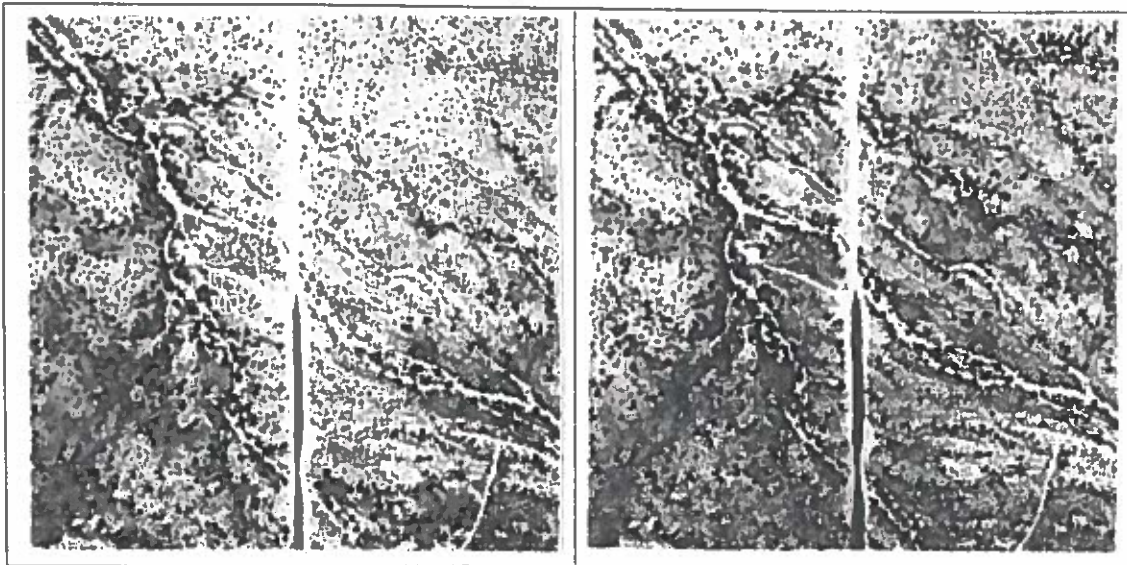
APPROX. SCALE OF PHOTOS

1:10,000

DATE OF PHOTOGRAPHY

16 SEPT. 1961

STEREO-GRAM



DISTANCE  
FT. N. \_\_\_\_\_ FT.  
FT. S. \_\_\_\_\_ FT.

ELEVATION  
\_\_\_\_\_ FT.  
\_\_\_\_\_ FT.

DISTANCE  
FT. E. \_\_\_\_\_ FT.  
FT. W. \_\_\_\_\_ FT.

ELEVATION  
\_\_\_\_\_ FT.  
\_\_\_\_\_ FT.

DATE

# ARIZONA TEST AREA

(PHOTO-IDENTIFICATION INFORMATION)

STATION

PP AN-1-A, AMS 1960

LATITUDE 33° 29' 40." 424 "	LONGITUDE 111° 36' 58." 328 "
NORTHING 3,706,093.41 M.	EASTING 442,758.54 M.
NORTHING (Y) 907,573.36 FT.	EASTING (X) 591,599.38 FT.

DATUM 1927 NORTH AMERICAN DATUM	ELEVATION NO ELEV.	FEET METERS
GRID AND ZONE U.T.M. 12	ORDER	DATE ESTABLISHED
GRID AND ZONE ARIZONA STATE PLANE-CENTRAL	DATUM SEA LEVEL DATUM OF 1929	

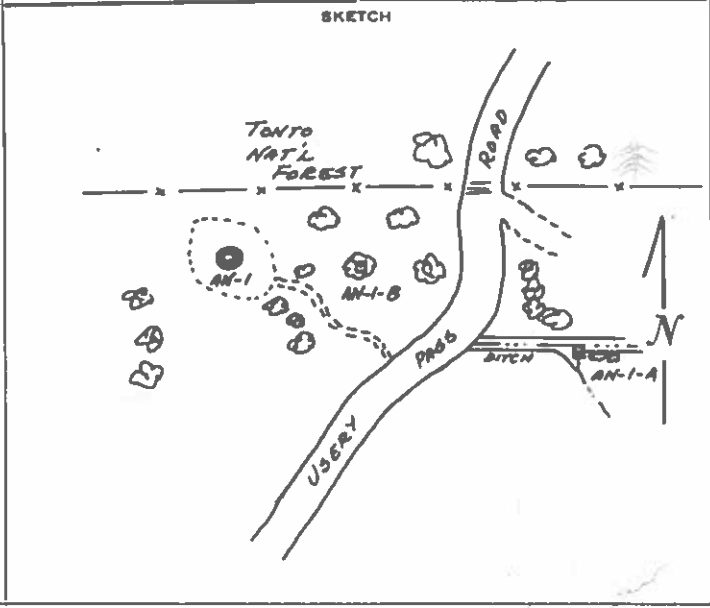
**DESCRIPTION**

Tip of brush formed by south edge of east-west ditch and east edge of small drain from the southeast.

PP is 483.4 feet in geodetic azimuth 277°06'10" V from AN-1.

NAD 83 VALUES AVAILABLE

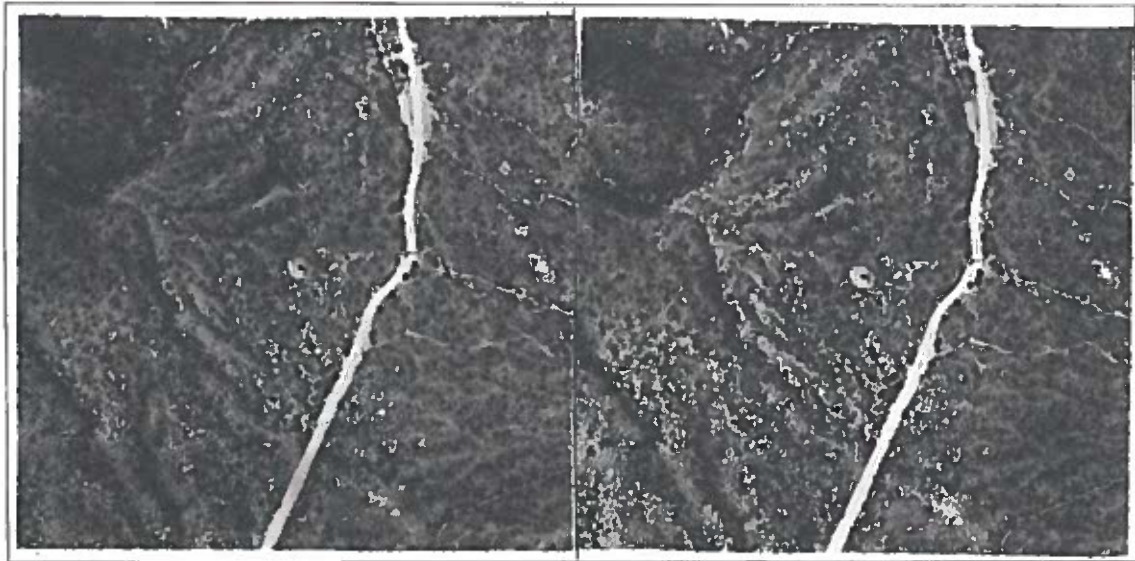
FILE COPY



APPROX. SCALE OF PHOTOS  
1:10,000

DATE OF PHOTOGRAPHY  
16 SEPT. 1961

STEREO-GRAM



DISTANCE  
FT. N. \_\_\_\_\_ FT.  
FT. S. \_\_\_\_\_ FT.

ELEVATION  
\_\_\_\_\_ FT.  
\_\_\_\_\_ FT.

DISTANCE  
FT. E. \_\_\_\_\_ FT.  
FT. W. \_\_\_\_\_ FT.

ELEVATION  
\_\_\_\_\_ FT.  
\_\_\_\_\_ FT.

DATE



# ARIZONA TEST AREA

(PHOTO-IDENTIFICATION INFORMATION)

STATION

PP AN-1-B, AMS 1960

LATITUDE <i>33° 29' 40." 976"</i>	LONGITUDE <i>111° 37' 00." 853"</i>	DATUM 1927 NORTH AMERICAN DATUM	ELEVATION <i>NO ELEV.</i>	FEET METERS
NORTHING <i>3,706,110.80' M.</i>	EASTING <i>442,693.49' M.</i>	GRID AND ZONE U.T.M. 12	ORDER	DATE ESTABLISHED
NORTHING (Y) <i>907,628.53' Ft.</i>	EASTING (X) <i>591,385.39' Ft.</i>	GRID AND ZONE ARIZONA STATE PLANE-CENTRAL	DATUM SEA LEVEL DATUM OF 1929	

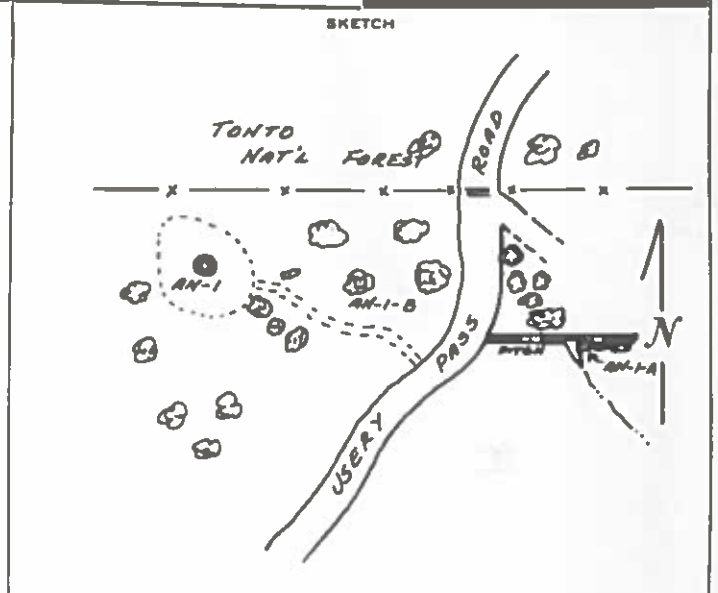
DESCRIPTION

Center of Palo Verde tree which is 14 feet high and 12 feet wide.

PP is 265.9 feet in geodetic azimuth 270°50'50" from AN-1.

**NAD 83 VALUES AVAILABLE**

**FILE COPY**



APPROX. SCALE OF PHOTOS  
*1:10,000*

DATE OF PHOTOGRAPHY  
*16 SEPT. 1961*

STEREO-GRAM



DISTANCE	ELEVATION	DISTANCE	ELEVATION
FT. N.	_____ FT.	FT. E.	_____ FT.
FT. S.	_____ FT.	FT. W.	_____ FT.
DATE _____			



North American Datum Conversion  
 NAD 27 to NAD 83  
 NADCON Program Version 1.01

AZ 167

=====  
 Transformation #: 1 Region: Conus

Station name: BM "A 107" (C&GS)

	Latitude	Longitude
NAD 27 datum values:	33 23 18.339	111 30 15.906
NAD 83 datum values:	33 23 18.517	111 30 18.381
NAD 83 - NAD 27 shift values:	.178	2.475(secs.)
	5.499	63.955(meters)
Magnitude of total shift:		64.191(meters)

Transformation #: 2 Region: Conus

Station name: NUMBER THREE

	Latitude	Longitude
NAD 27 datum values:	33 26 19.326	111 38 23.478
NAD 83 datum values:	33 26 19.496	111 38 25.967
NAD 83 - NAD 27 shift values:	.170	2.489(secs.)
	5.232	64.283(meters)
Magnitude of total shift:		64.496(meters)

Transformation #: 3 Region: Conus

Station name: NUMBER FOUR

	Latitude	Longitude
NAD 27 datum values:	33 25 37.924	111 35 53.074
NAD 83 datum values:	33 25 38.096	111 35 55.559
NAD 83 - NAD 27 shift values:	.172	2.485(secs.)
	5.302	64.184(meters)
Magnitude of total shift:		64.402(meters)

Transformation #: 4 Region: Conus

Station name: AJ-1, AMS 1960

	Latitude	Longitude
NAD 27 datum values:	33 29 43.107	111 41 .401
NAD 83 datum values:	33 29 43.270	111 41 2.897
NAD 83 - NAD 27 shift values:	.163	2.496(secs.)
	5.014	64.420(meters)
Magnitude of total shift:		64.615(meters)

Transformation #: 5 Region: Conus

Station name: AN-1, AMS 1960

	Latitude	Longitude
NAD 27 datum values:	33 29 41.015	111 37 3.992
NAD 83 datum values:	33 29 41.180	111 37 6.482
NAD 83 - NAD 27 shift values:	.165	2.490(secs.)
	5.068	64.273(meters)
Magnitude of total shift:		64.472(meters)

Transformation #: 6 Region: Conus

Station name: FP AJ-1-A, AMS 1960 (4th ORDER)

	Latitude	Longitude
NAD 27 datum values:	33 29 43.972	111 41 .428
NAD 83 datum values:	33 29 44.135	111 41 2.924
NAD 83 - NAD 27 shift values:	.163	2.496(secs.)
	5.014	64.420(meters)
Magnitude of total shift:		64.615(meters)

Transformation #: 7 Region: Conus

Station name: FP AJ-1-B, AMS 1960 (4th ORDER)

	Latitude	Longitude
NAD 27 datum values:	33 29 45.115	111 40 59.414
NAD 83 datum values:	33 29 45.278	111 41 1.910
NAD 83 - NAD 27 shift values:	.163	2.496(secs.)
	5.013	64.420(meters)
Magnitude of total shift:		64.614(meters)

Transformation #: 8 Region: Conus

Station name: FP AN-1-A, AMS 1960 (4th ORDER)

	Latitude	Longitude
NAD 27 datum values:	33 29 40.424	111 36 58.328
NAD 83 datum values:	33 29 40.589	111 37 .818
NAD 83 - NAD 27 shift values:	.165	2.490(secs.)
	5.070	64.269(meters)
Magnitude of total shift:		64.469(meters)

Transformation #: 9 Region: Conus

Station name: FP AN-1-B, AMS 1960 (4th ORDER)

	Latitude	Longitude
NAD 27 datum values:	33 29 40.976	111 37 .853
NAD 83 datum values:	33 29 41.141	111 37 3.343
NAD 83 - NAD 27 shift values:	.165	2.490(secs.)
	5.069	64.271(meters)
Magnitude of total shift:		64.471(meters)



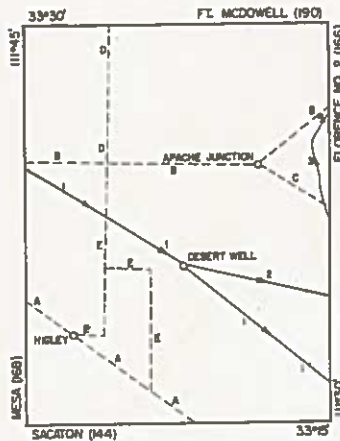
UNITED STATES  
DEPARTMENT OF THE INTERIOR  
GEOLOGICAL SURVEY

THIRD-ORDER LEVELING  
Sea Level Datum of 1928

DESERT WELL QUADRANGLE  
ARIZONA 167  
N3315--W11130/15

FILE COPY

Maricopa and Pinal Counties  
Edition of 3/26/57  
Only the standard tablets are listed for lines run more than 25 years before the above edition date



LINE 4.

FROM A POINT 3.3 MILES NORTHEAST OF APACHE JUNCTION NORTH-EAST ALONG GOLDFIELD ROAD INTO FLORENCE NO. 2 QUADRANGLE (166) (by R. Phillips, 1905; Book 662L)

No permanent bench marks fall on this quadrangle.

USC&GS Leveling Lines

- A. Mesa to Walnut Wells, Arizona (No. 31) First and Second order
- B. Roosevelt to Maricopa, Arizona (No. 46) First and Second order
- C. Superior Area, Arizona (No. 55) Second order
- D. 4.8 Miles NE. of Glendale to 7.8 Miles W. of Apache Junction, Arizona (No. 70) First order
- E. 8 Miles W. of Apache Junction to Hittenhouse, Arizona (No. 72) First order

Feet

LINE 1.

FROM MESA QUADRANGLE (168) SOUTHEAST ALONG ROAD VIA DESERT WELL INTO FLORENCE NO. 2 QUADRANGLE (166) (by T. Winsor, 1899; Book 8498)

- Mesa, 6.2 mi. SE. of; 8.1 mi. NW. of Desert Well; 60 ft. S. of rd.; on N. side of giant cactus (30 ft. high) standard iron post with bronze cap stamped "1295 PHNX" 1294.904
- Desert Well, 5.2 mi. NW. of; 20 ft. NE. of rd.; standard iron post with bronze cap stamped "1351 PHNX" 1350.665
- Desert Well, 2.2 mi. NW. of; on NE. side of rd. at bend; 25 ft. SE. of small drain; standard iron post with bronze cap stamped "1407 PHNX" 1406.864
- Desert Well, at NE. corner of fence enclosing Thos. Buchanan's residence; standard iron post with bronze cap stamped "1446 PHNX" 1445.826 *440.689*
- Desert Well, 3.0 mi. SE. of; on SW. side of rd.; standard iron post with bronze cap stamped "1490 PHNX" 1489.791 *454.089*
- Desert Well, 6.0 mi. SE. of; on NE. side of rd.; standard iron post with bronze cap stamped "1542 PHNX" 1541.890

LINE 2.

FROM DESERT WELL SOUTHEAST ALONG SILVER KING ROAD INTO FLORENCE NO. 2 QUADRANGLE (166) (by T. Winsor, 1899; Book 8498)

- Desert Well, at NE. corner of fence enclosing Thos. Buchanan's residence; standard iron post with bronze cap stamped "1446 PHNX" (Described in Line 1) 1445.826
- Desert Well, 3.0 mi. E. of; 30 ft. N. of rd.; standard iron post with bronze cap stamped "1525 PHNX" 1524.759
- Desert Well, 6.0 mi. E. of; on N. side of rd.; 150 ft. W. of small wash; standard iron post with bronze cap stamped "1609 PHNX" 1608.791 *490.360*

LINE 3.

FROM FLORENCE NO. 2 QUADRANGLE (167) NORTH ALONG GOLDFIELD ROAD TO A POINT 3.3 MILES NORTHEAST OF APACHE JUNCTION (double run by T. Winsor, 1899; Book 8498)

- Goldfield, 4.0 mi. S. of; on E. side of rd. at bend; standard iron post with bronze cap stamped "1765 PHNX" 1765.013
- Apache Junction, 3.3 mi. NE. of along State Highway 88; 1.0 mi. SW. of Goldfield; at jct. of dirt rd. leading SW.; 78 ft. SE. of center of hwy.; 57 ft. NW. of center of side rd.; standard iron post with bronze cap stamped "1934 PHNX" (Recovered by USC&GS, 1948) 1933.785

FILE COPY