

FOCUS on Accuracy

Contra Costa

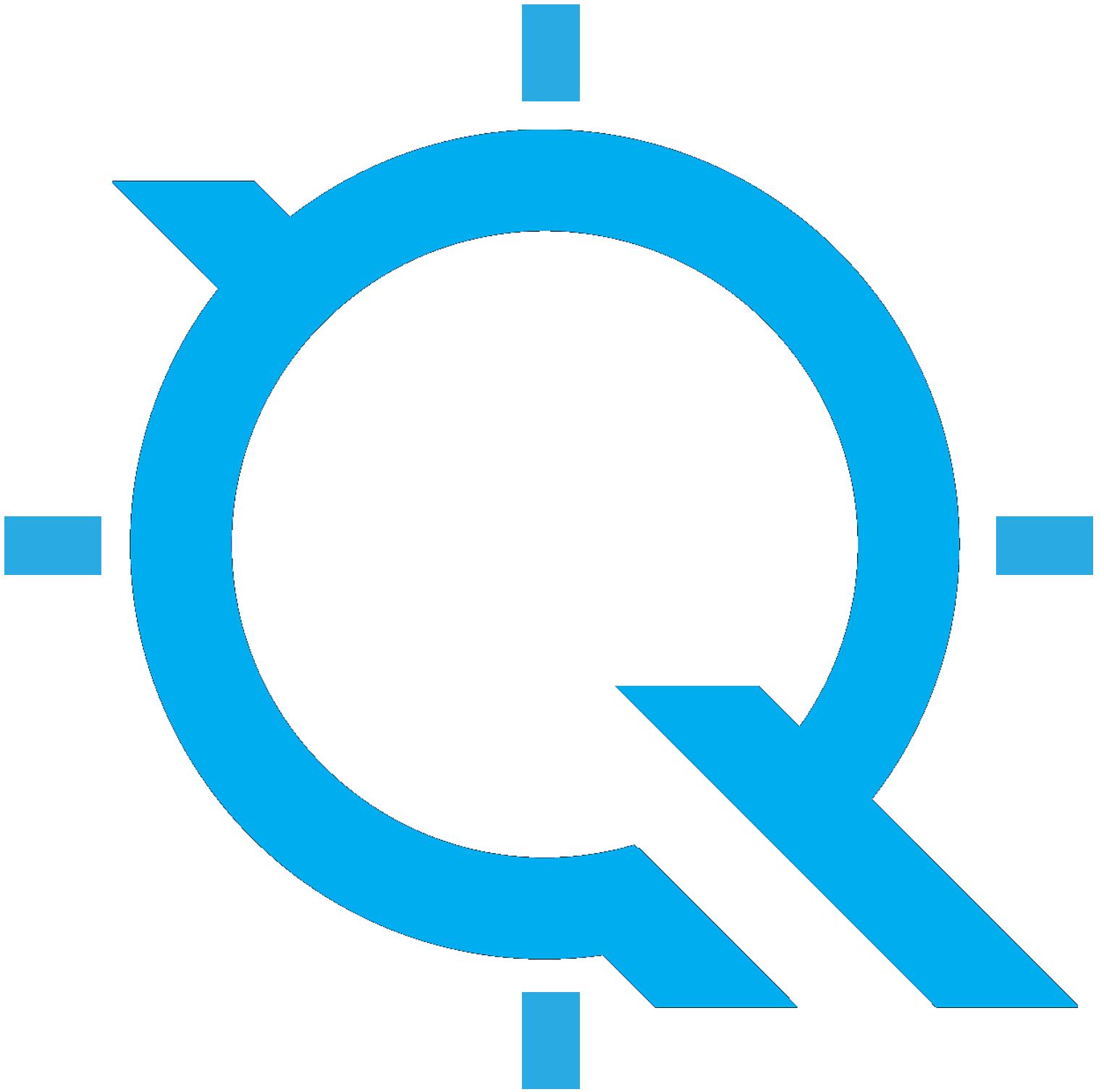
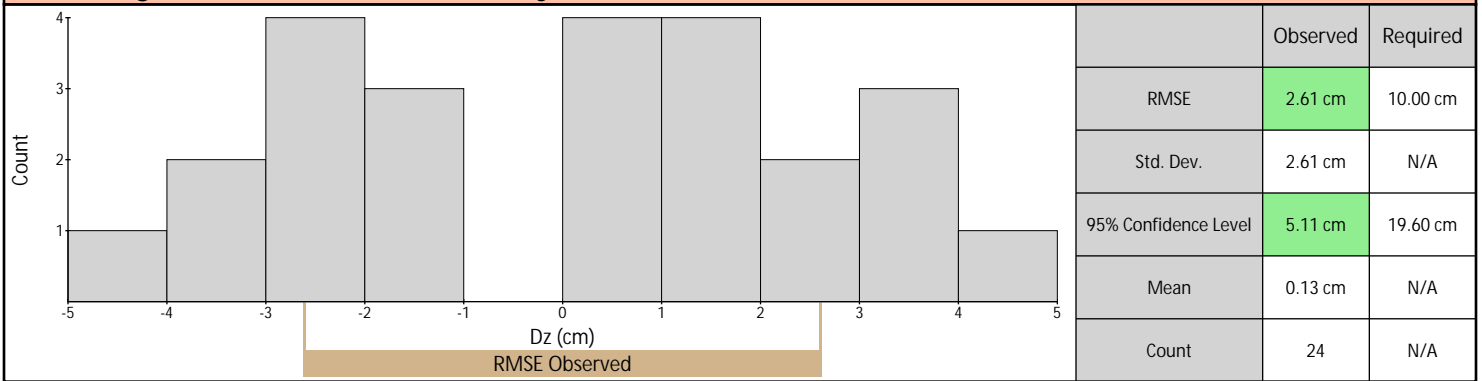


Table of Contents

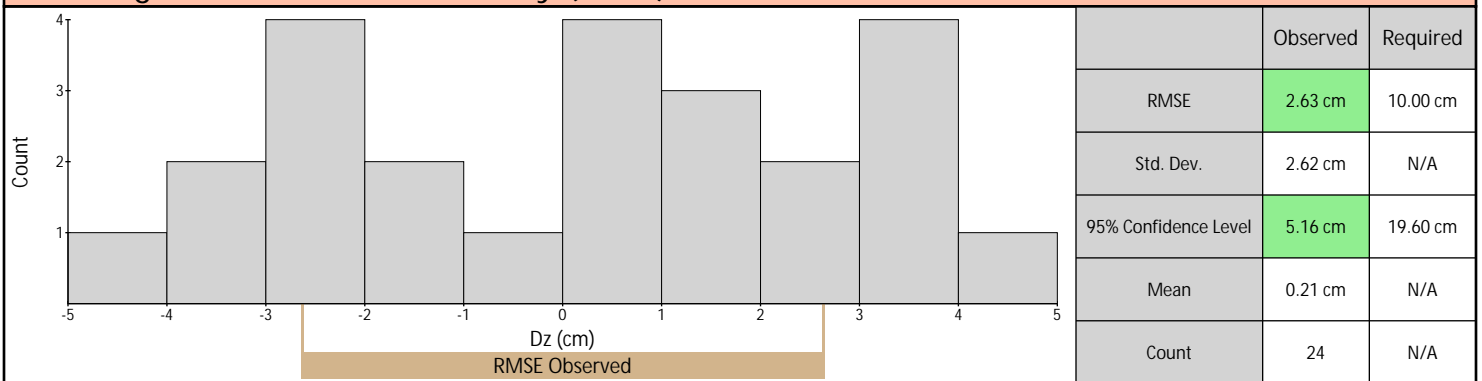
Vertical Accuracy Assessment.....	3
Control Point Locations.....	5
Control Point Breakdown.....	7
Individual Control Point Pages.....	9

Vertical Accuracy Assessment

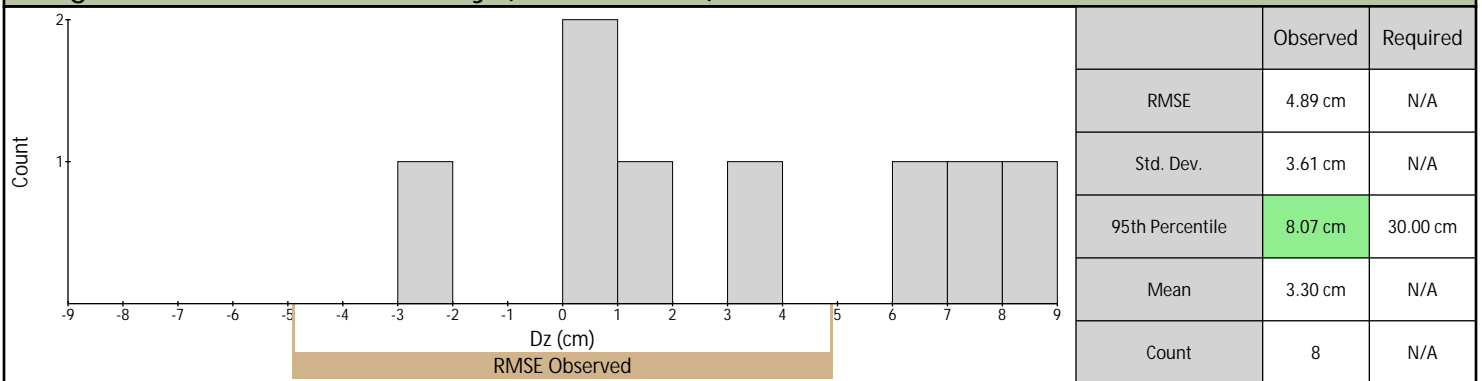
Nonvegetated Vertical Accuracy (Ground LAS)



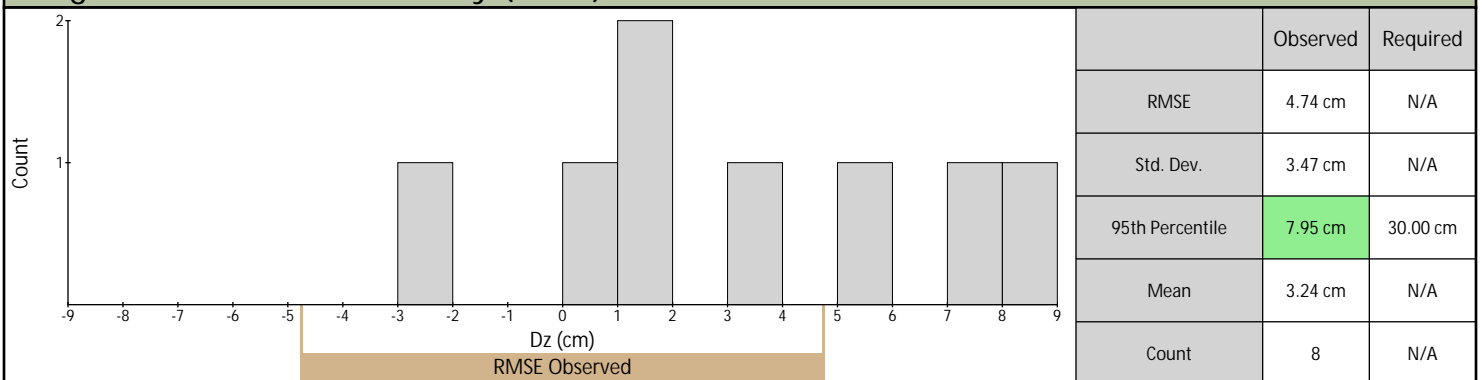
Nonvegetated Vertical Accuracy (DEM)



Vegetated Vertical Accuracy (Ground LAS)

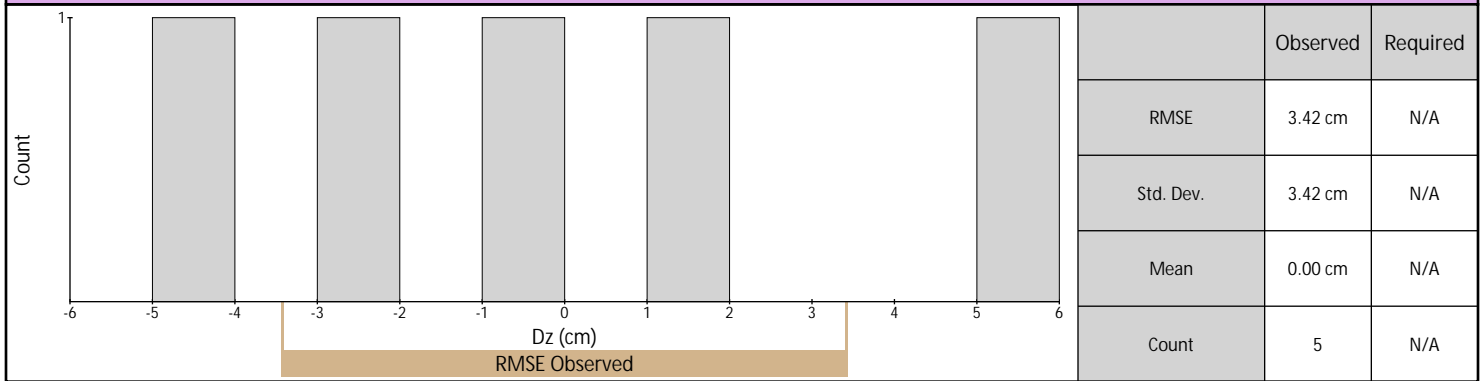


Vegetated Vertical Accuracy (DEM)

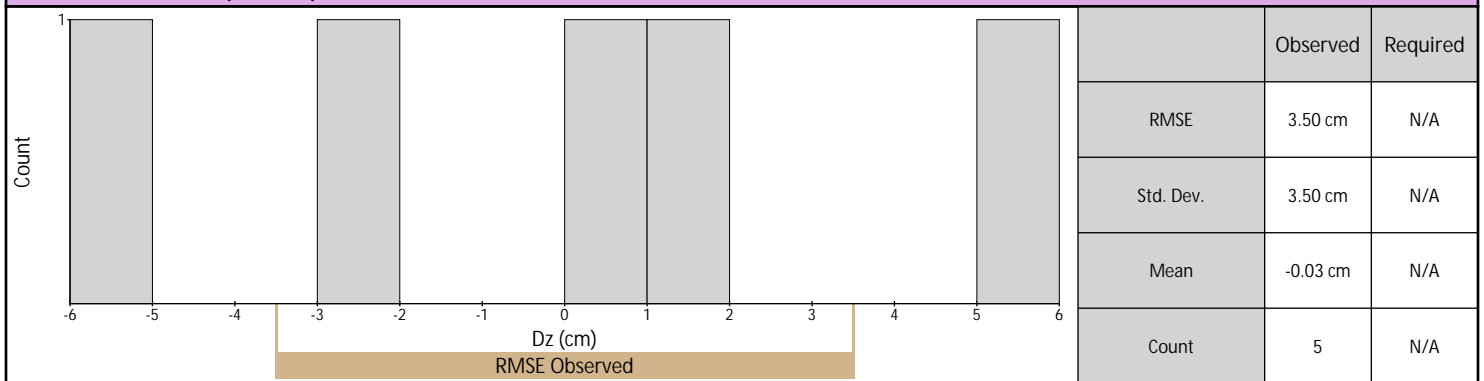


Vertical Accuracy Assessment (continued)

Calibration (Ground LAS)

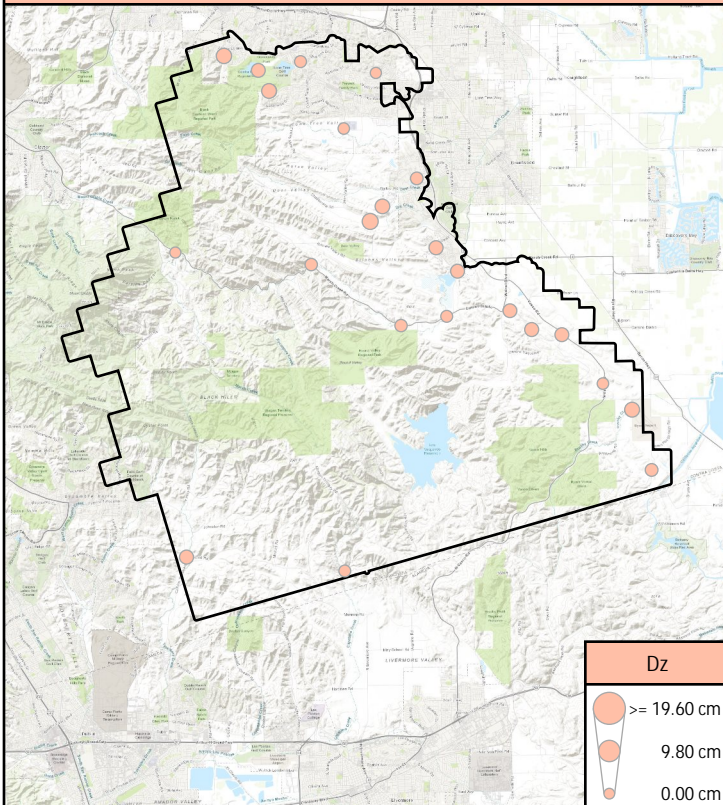


Calibration (DEM)

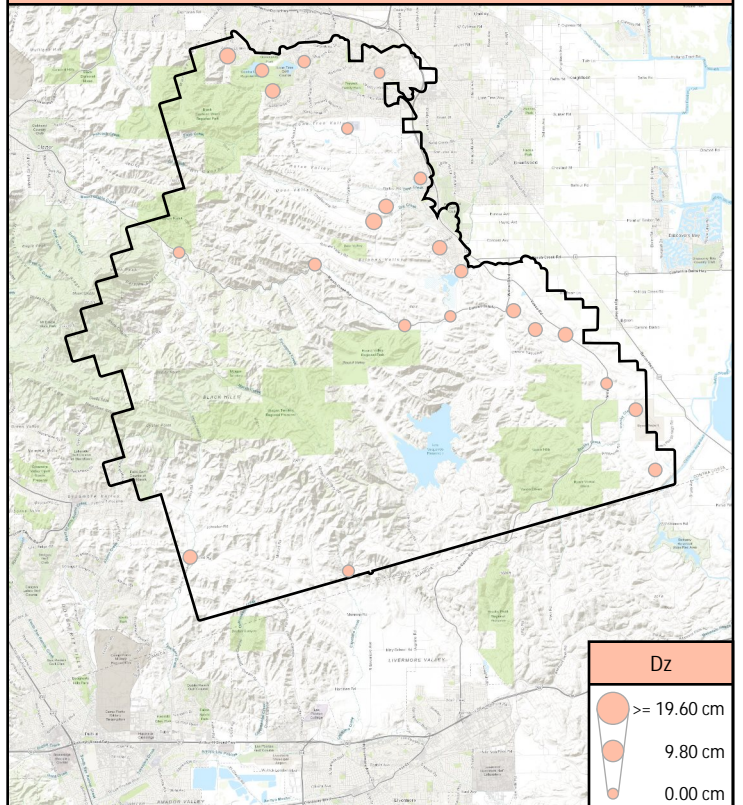


Control Point Locations

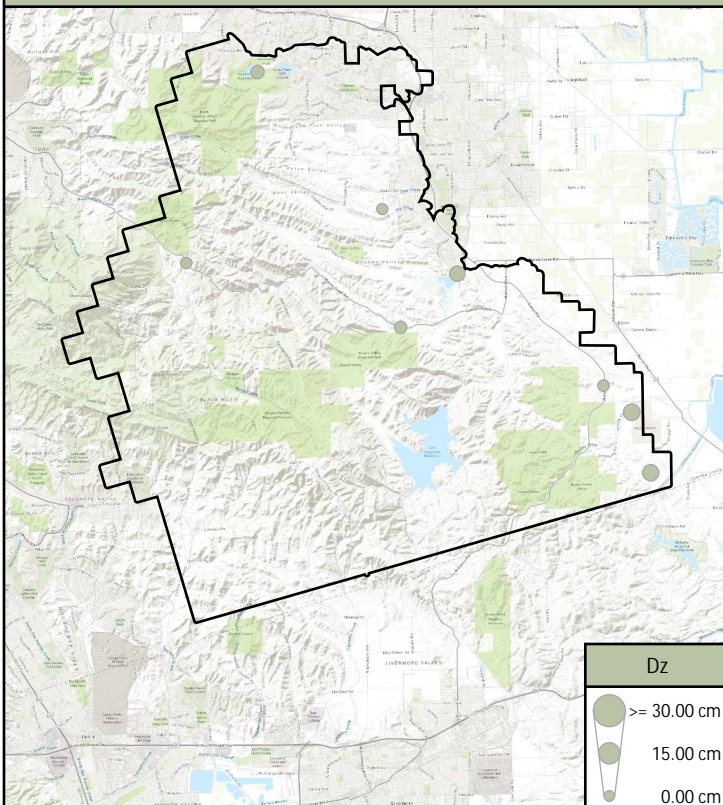
Nonvegetated Vertical Accuracy (Ground LAS)



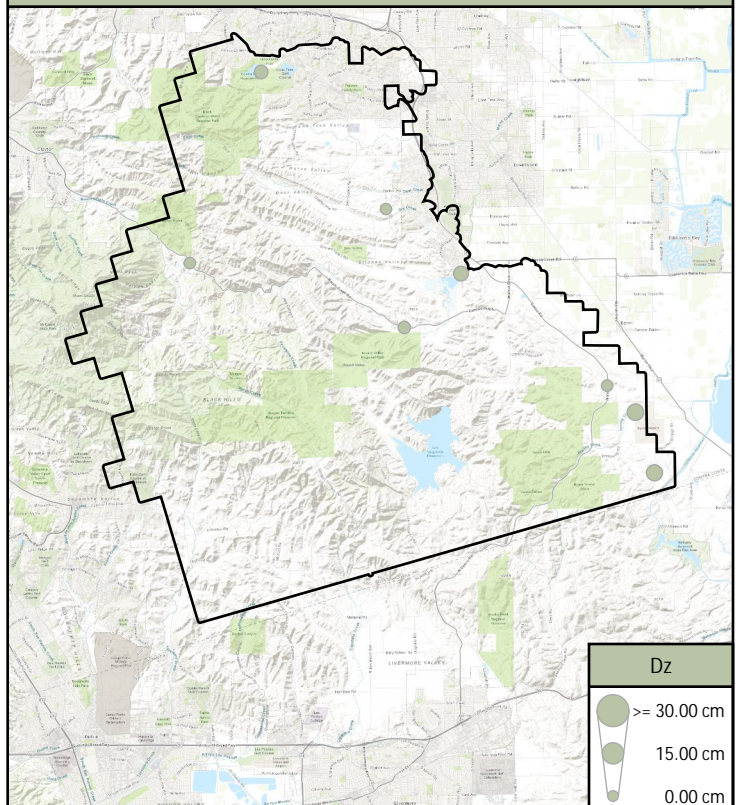
Nonvegetated Vertical Accuracy (DEM)



Vegetated Vertical Accuracy (Ground LAS)

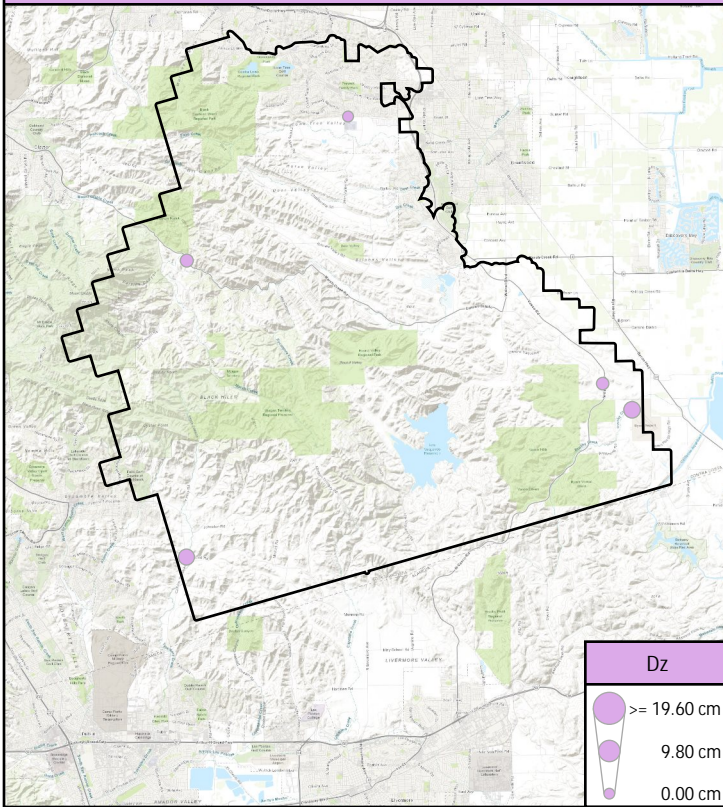


Vegetated Vertical Accuracy (DEM)

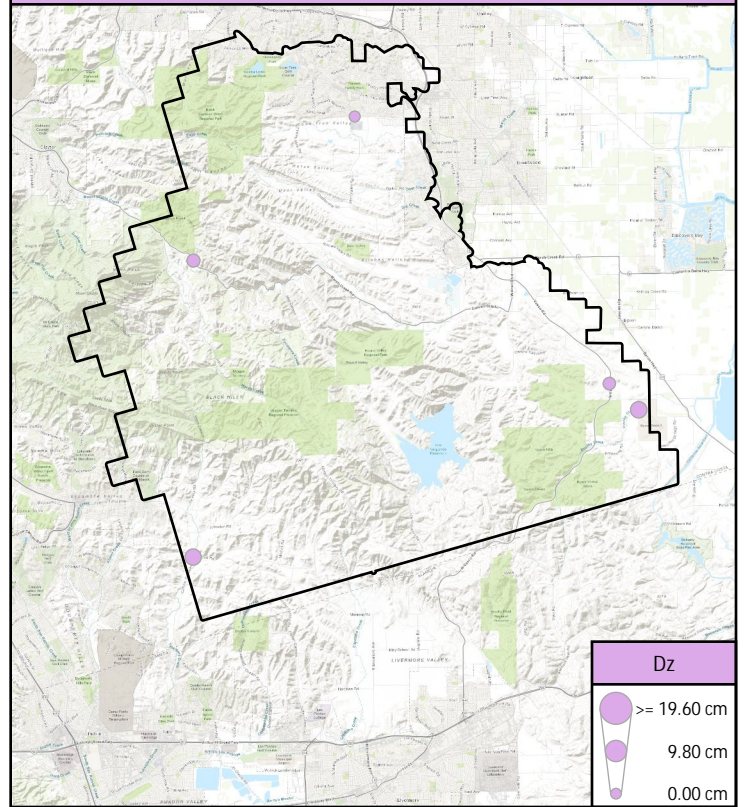


Control Point Locations (continued)

Calibration (Ground LAS)



Calibration (DEM)



Control Point Breakdown

Point	Type	Page	Ground (LAS Points)				DEM Dz
			Dz	Density	Nearest	Slope	
BE001	NVA	9	-2.99 cm	11.64 ppsm	0.10 m	2.58°	-3.25 cm
BE002	NVA	10	-1.09 cm	12.59 ppsm	0.09 m	0.86°	-0.53 cm
BE003	NVA	11	3.81 cm	8.81 ppsm	0.09 m	2.58°	2.60 cm
BE004	NVA	12	0.70 cm	11.21 ppsm	0.12 m	0.86°	0.77 cm
BE005	NVA	13	0.30 cm	11.67 ppsm	0.22 m	2.58°	0.71 cm
BE006	NVA	14	-2.90 cm	11.64 ppsm	0.18 m	5.85°	-2.28 cm
BE007	NVA	15	-2.87 cm	13.05 ppsm	0.24 m	1.01°	-2.56 cm
BE008	NVA	16	1.01 cm	16.59 ppsm	0.11 m	5.71°	1.02 cm
BE009	NVA	17	2.76 cm	11.25 ppsm	0.08 m	2.63°	3.08 cm
BE010	NVA	18	1.48 cm	15.99 ppsm	0.23 m	0.41°	1.87 cm
BE011	NVA	19	3.62 cm	11.14 ppsm	0.10 m	2.43°	3.46 cm
BE012	NVA	20	1.85 cm	6.97 ppsm	0.15 m	4.86°	2.54 cm
BE013	NVA	21	2.91 cm	9.09 ppsm	0.10 m	1.72°	3.53 cm
BE014	NVA	22	1.49 cm	11.64 ppsm	0.05 m	0.86°	1.37 cm
BE015	NVA	23	0.74 cm	9.05 ppsm	0.12 m	2.63°	0.79 cm
BE016	NVA	24	4.86 cm	11.39 ppsm	0.07 m	4.29°	4.99 cm
BE017	NVA	25	-2.20 cm	15.21 ppsm	0.29 m	2.02°	-2.03 cm
BE018	NVA	26	-3.00 cm	8.31 ppsm	0.07 m	19.11°	-2.86 cm
UA001	NVA	27	-4.22 cm	13.37 ppsm	0.17 m	2.29°	-4.73 cm
UA002	NVA	28	-1.14 cm	10.86 ppsm	0.15 m	2.29°	-1.56 cm
UA003	NVA	29	-3.73 cm	15.88 ppsm	0.04 m	1.42°	-3.49 cm
UA004	NVA	30	0.43 cm	11.07 ppsm	0.10 m	1.72°	0.01 cm
UA005	NVA	31	-1.76 cm	9.16 ppsm	0.18 m	1.62°	-1.71 cm
UA006	NVA	32	3.03 cm	9.30 ppsm	0.16 m	2.00°	3.37 cm
FR001	VVA	33	6.45 cm	6.15 ppsm	0.07 m	5.14°	5.67 cm
FR002	VVA	34	-2.31 cm	6.44 ppsm	0.26 m	4.65°	-2.43 cm
TG001	VVA	35	3.55 cm	11.39 ppsm	0.11 m	9.83°	3.84 cm
TG002	VVA	36	1.16 cm	9.55 ppsm	0.14 m	7.05°	1.11 cm

Control Point Breakdown (continued)

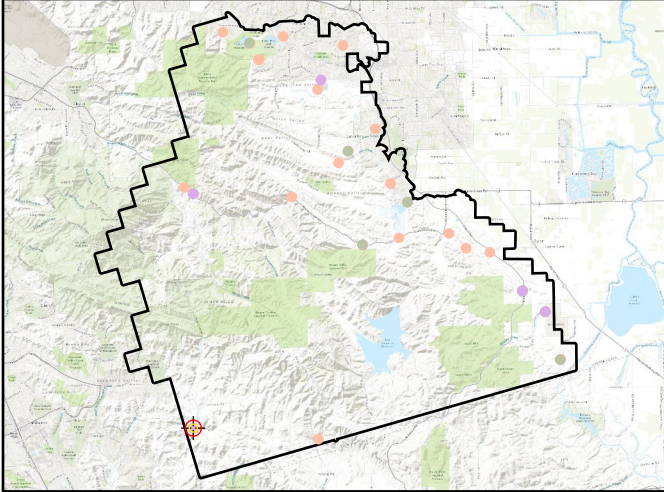
Point	Type	Page	Ground (LAS Points)				DEM Dz
			Dz	Density	Nearest	Slope	
TG003	VVA	37	7.97 cm	7.39 ppsm	0.19 m	7.05°	7.59 cm
TG004	VVA	38	0.86 cm	9.09 ppsm	0.18 m	6.84°	1.13 cm
TG005	VVA	39	0.61 cm	10.89 ppsm	0.10 m	3.04°	0.84 cm
TG006	VVA	40	8.13 cm	8.38 ppsm	0.24 m	2.29°	8.14 cm
CA001	CAL	41	-4.79 cm	12.38 ppsm	0.10 m	2.29°	-5.10 cm
CA002	CAL	42	5.37 cm	9.76 ppsm	0.20 m	1.43°	5.30 cm
CA003	CAL	43	-0.11 cm	13.02 ppsm	0.26 m	1.15°	0.21 cm
CA004	CAL	44	-2.04 cm	11.07 ppsm	0.06 m	4.86°	-2.14 cm
CA005	CAL	45	1.56 cm	10.04 ppsm	0.07 m	3.72°	1.58 cm

BE001

General	
Name	BE001
Type	NVA
Known Z	188.85 m
DEM Dz	-3.25 cm

Ground (LAS Points)	
Dz	-2.99 cm
Density	11.64 ppsm
Nearest	0.10 m
Slope	2.58°

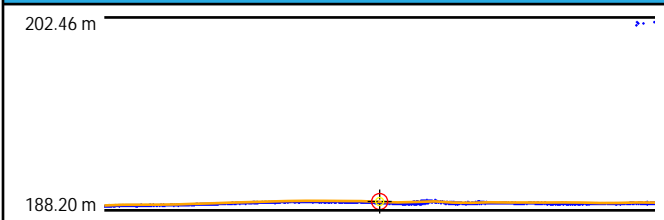
Project Context



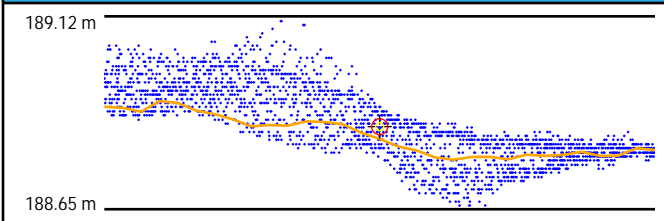
World Imagery



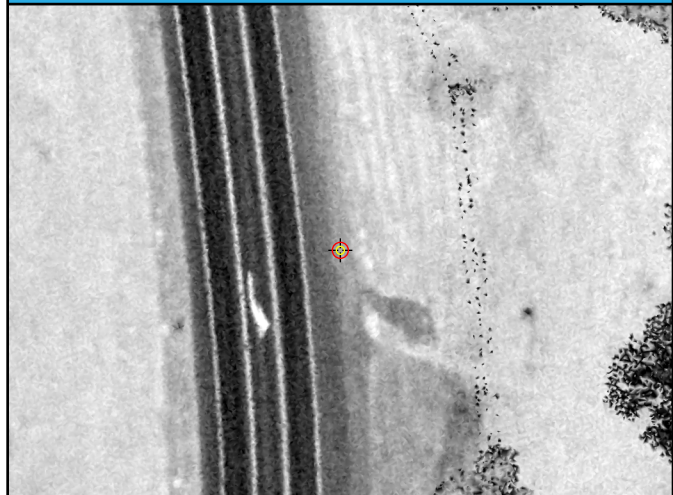
Cross Section - West to East



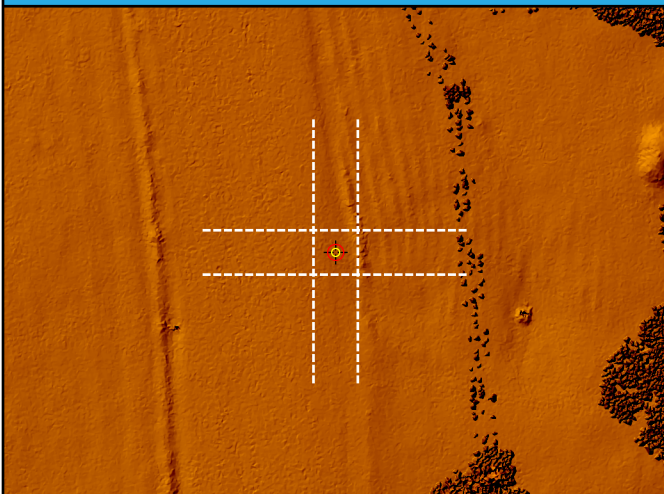
Cross Section - North to South



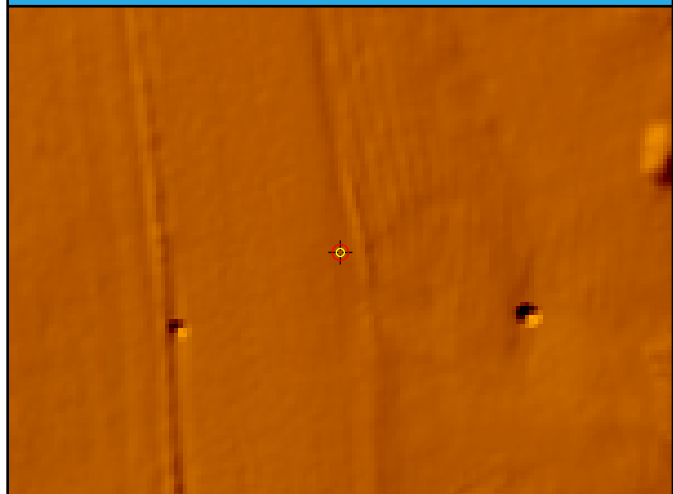
Intensity



LAS Points TIN



DEM

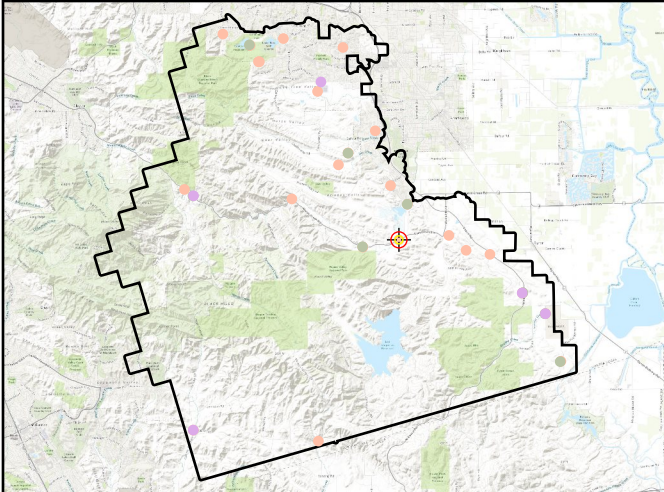


BE002

General	
Name	BE002
Type	NVA
Known Z	60.81 m
DEM Dz	-0.53 cm

Ground (LAS Points)	
Dz	-1.09 cm
Density	12.59 ppsm
Nearest	0.09 m
Slope	0.86°

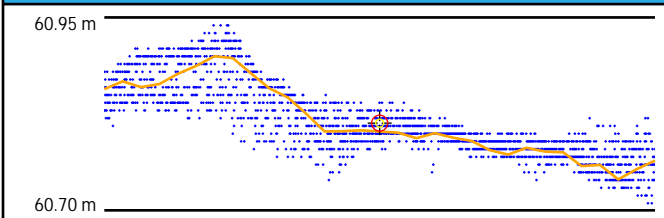
Project Context



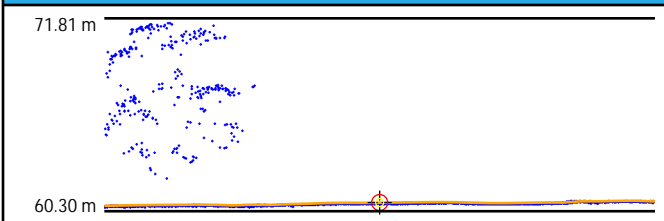
World Imagery



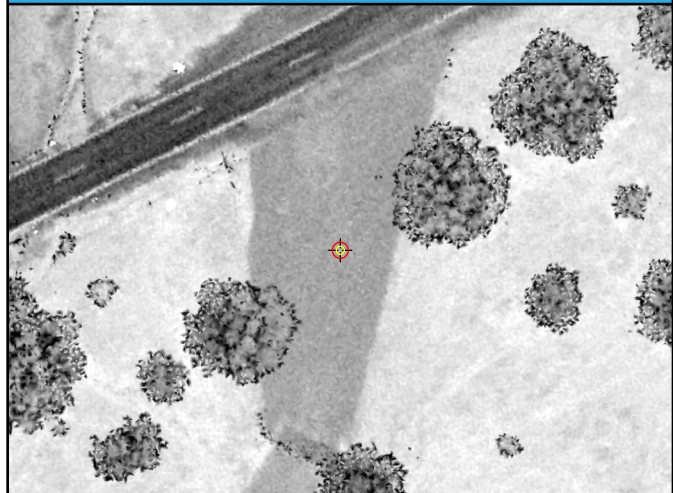
Cross Section - North to South



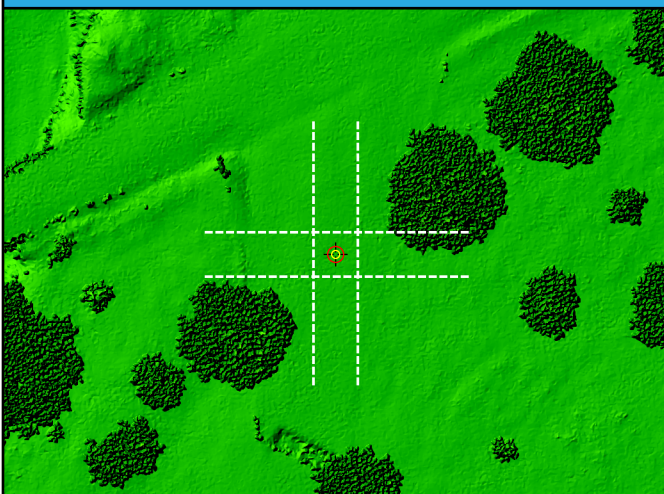
Cross Section - East to West



Intensity



LAS Points TIN



DEM

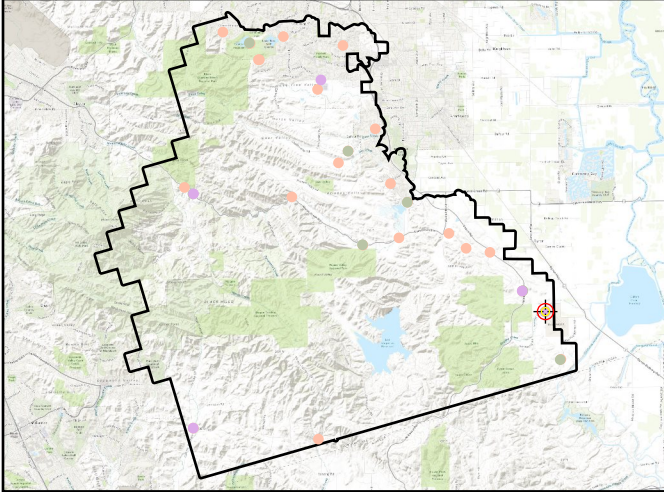


BE003

General	
Name	BE003
Type	NVA
Known Z	20.90 m
DEM Dz	2.60 cm

Ground (LAS Points)	
Dz	3.81 cm
Density	8.81 ppsm
Nearest	0.09 m
Slope	2.58°

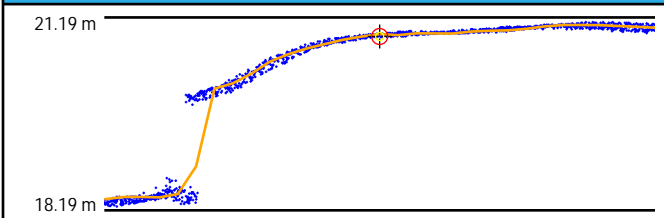
Project Context



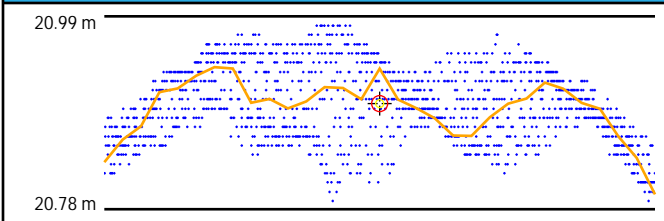
World Imagery



Cross Section - North to South



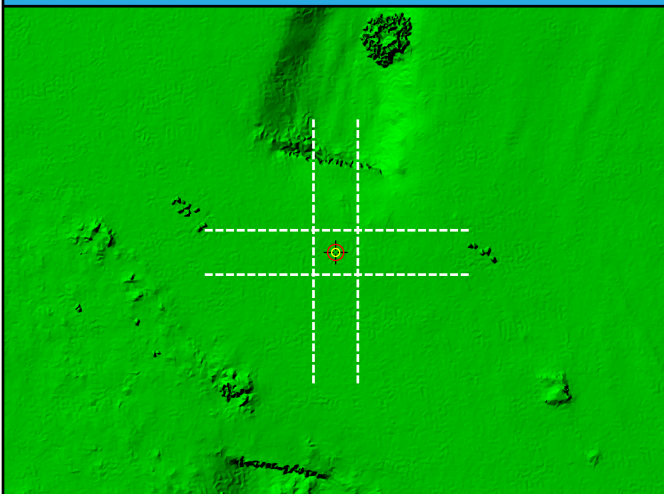
Cross Section - East to West



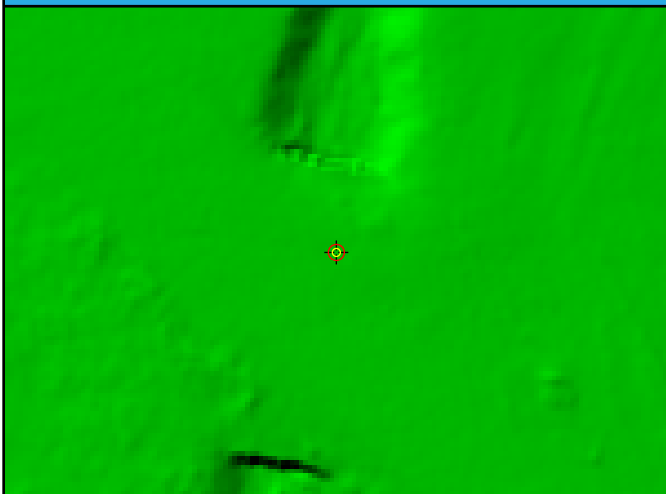
Intensity



LAS Points TIN



DEM

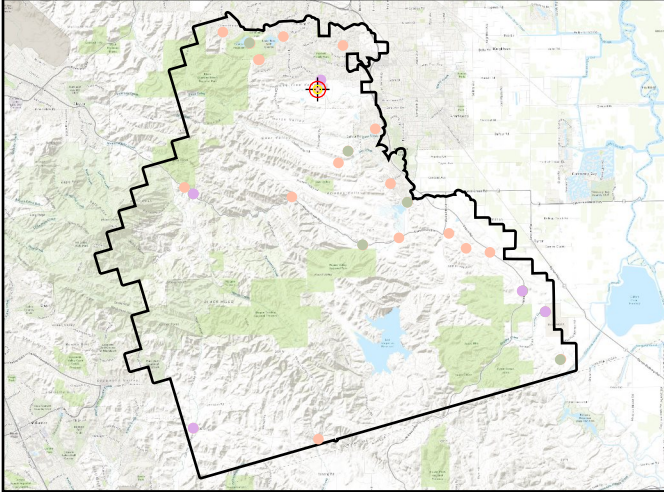


BE004

General	
Name	BE004
Type	NVA
Known Z	70.38 m
DEM Dz	0.77 cm

Ground (LAS Points)	
Dz	0.70 cm
Density	11.21 ppsm
Nearest	0.12 m
Slope	0.86°

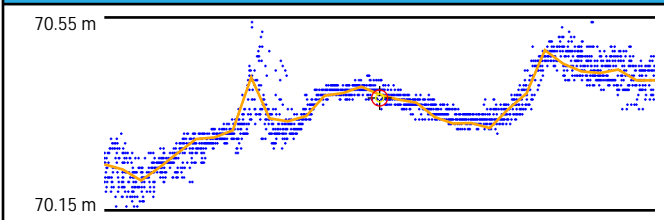
Project Context



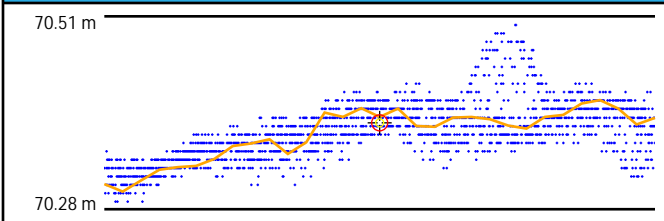
World Imagery



Cross Section - West to East



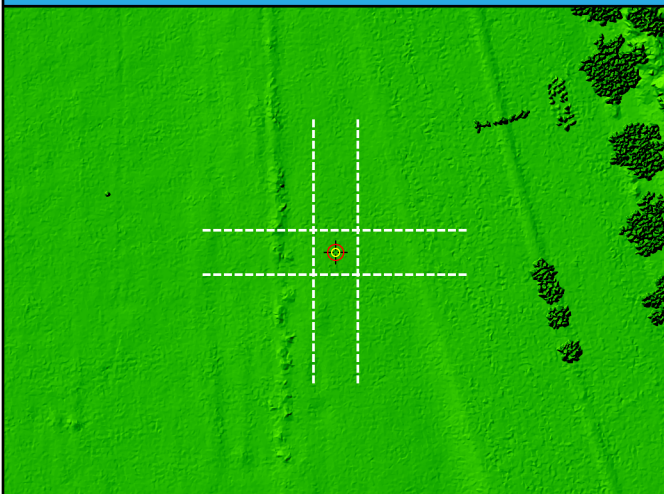
Cross Section - North to South



Intensity



LAS Points TIN



DEM

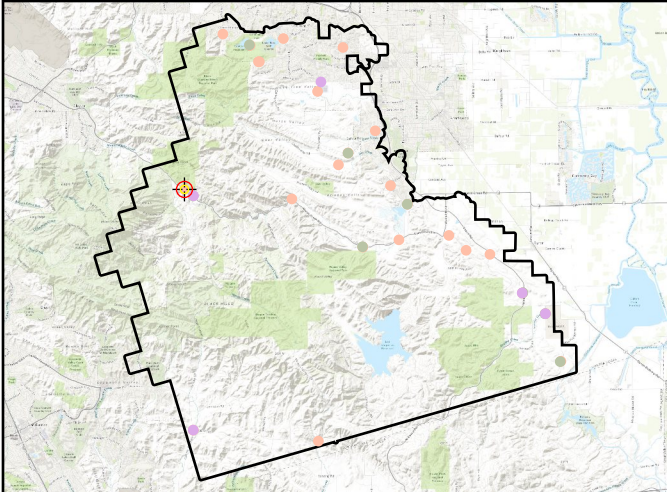


BE005

General	
Name	BE005
Type	NVA
Known Z	192.75 m
DEM Dz	0.71 cm

Ground (LAS Points)	
Dz	0.30 cm
Density	11.67 ppsm
Nearest	0.22 m
Slope	2.58°

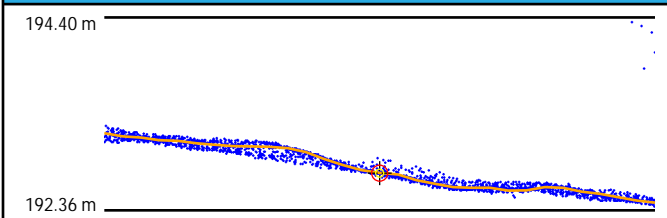
Project Context



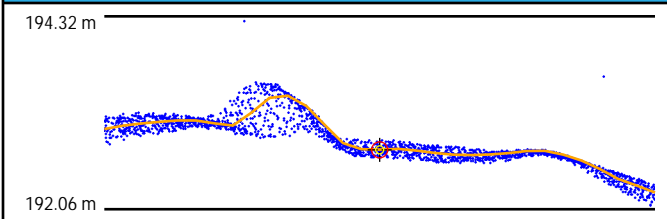
World Imagery



Cross Section - West to East



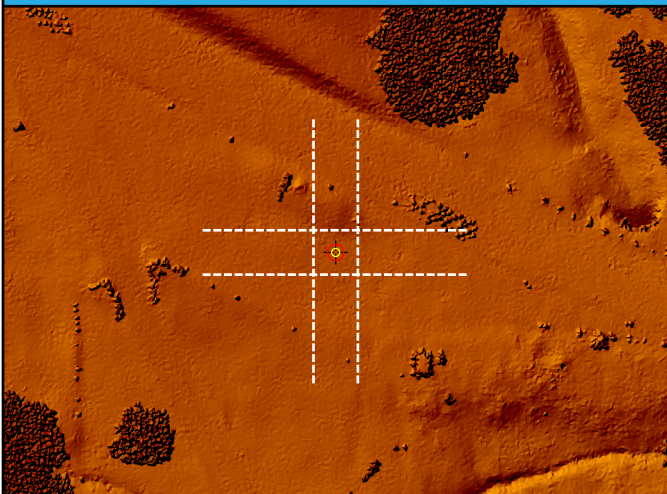
Cross Section - North to South



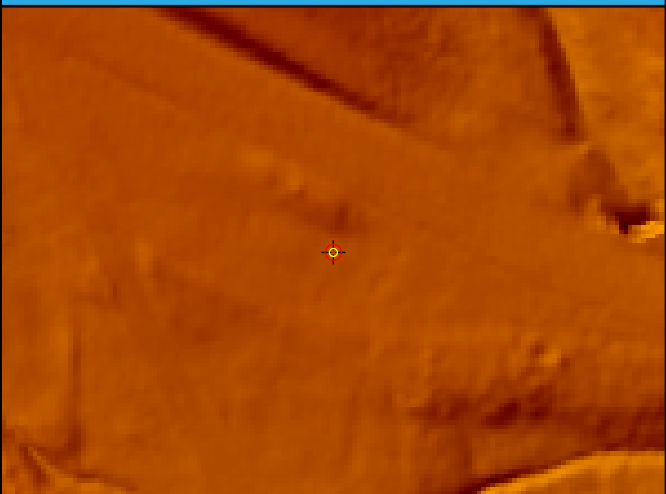
Intensity



LAS Points TIN



DEM

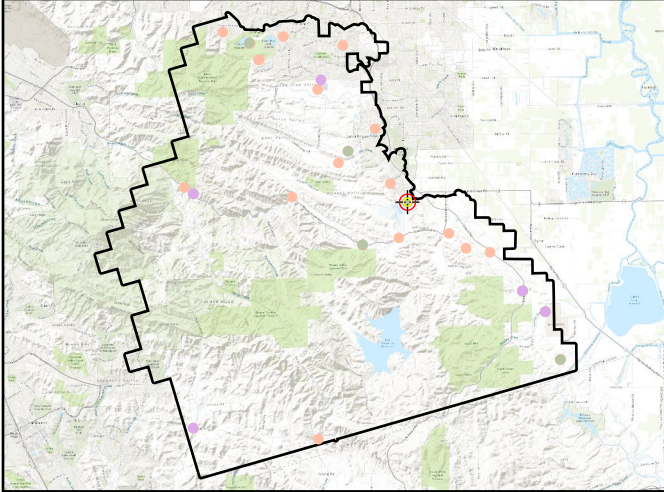


BE006

General	
Name	BE006
Type	NVA
Known Z	47.06 m
DEM Dz	-2.28 cm

Ground (LAS Points)	
Dz	-2.90 cm
Density	11.64 ppsm
Nearest	0.18 m
Slope	5.85°

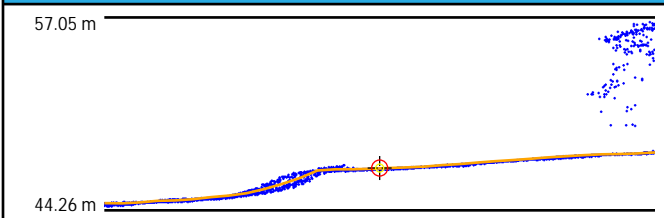
Project Context



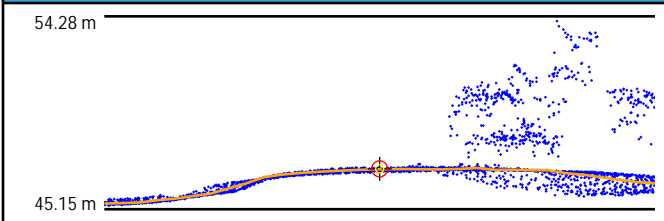
World Imagery



Cross Section - Northwest to Southeast



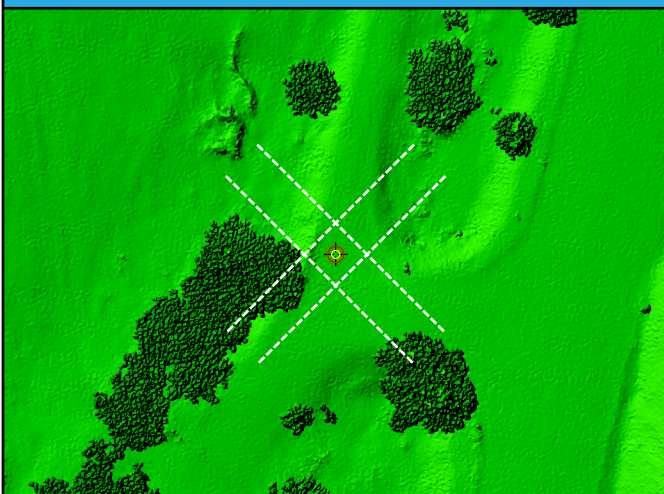
Cross Section - Northeast to Southwest



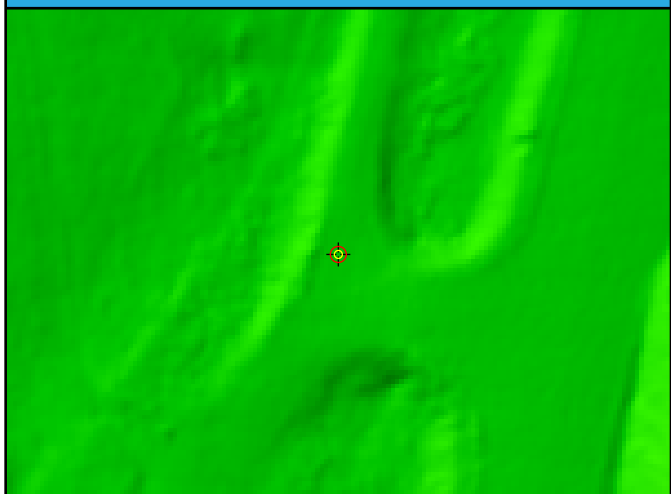
Intensity



LAS Points TIN



DEM

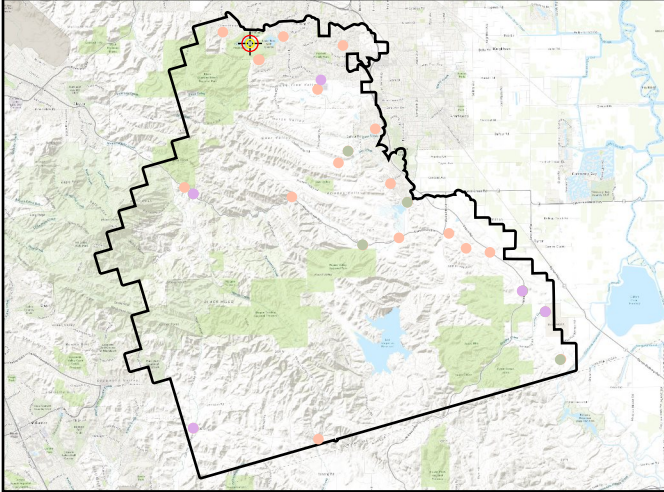


BE007

General	
Name	BE007
Type	NVA
Known Z	68.02 m
DEM Dz	-2.56 cm

Ground (LAS Points)	
Dz	-2.87 cm
Density	13.05 ppsm
Nearest	0.24 m
Slope	1.01°

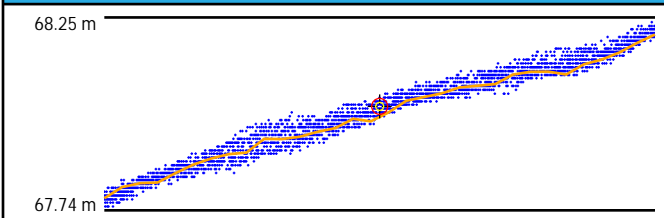
Project Context



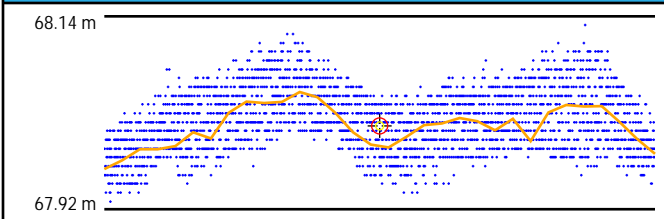
World Imagery



Cross Section - Northwest to Southeast



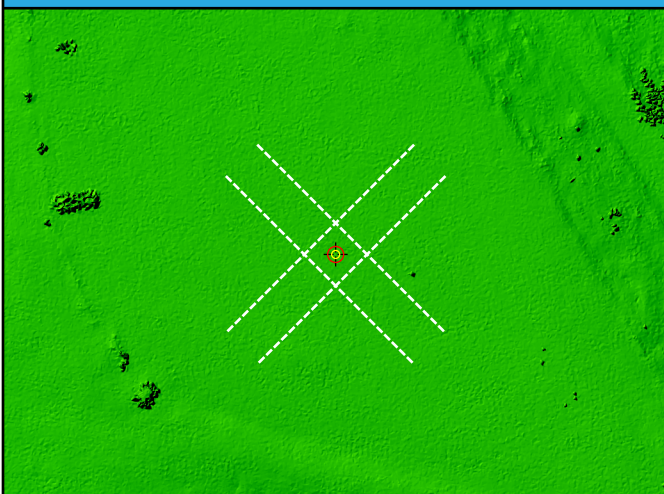
Cross Section - Northeast to Southwest



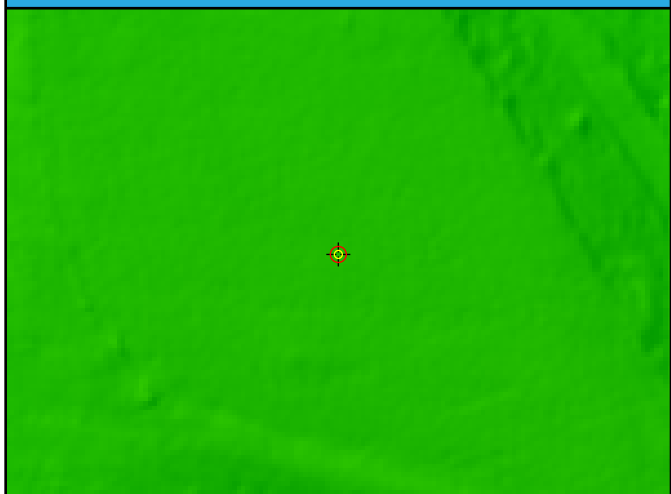
Intensity



LAS Points TIN



DEM

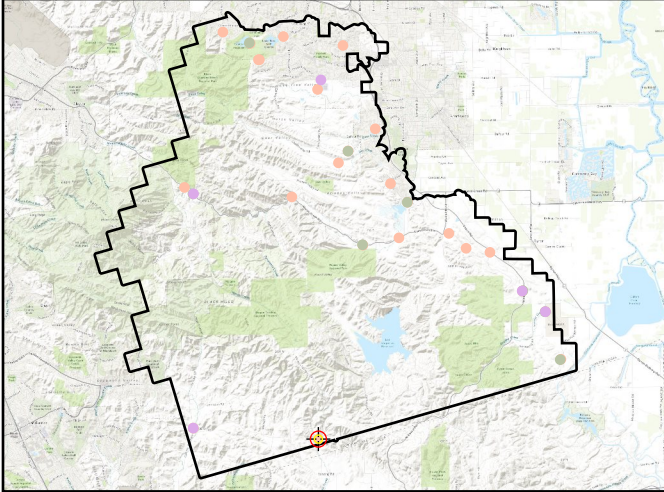


BE008

General	
Name	BE008
Type	NVA
Known Z	248.03 m
DEM Dz	1.02 cm

Ground (LAS Points)	
Dz	1.01 cm
Density	16.59 ppsm
Nearest	0.11 m
Slope	5.71°

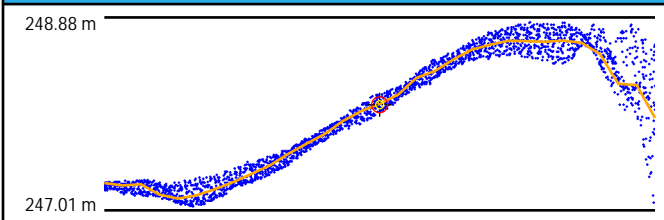
Project Context



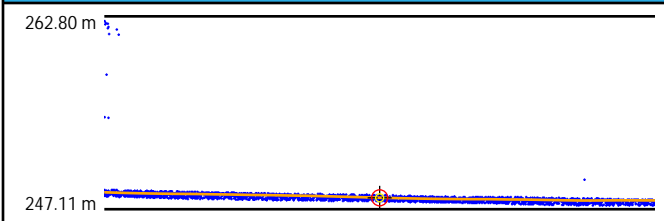
World Imagery



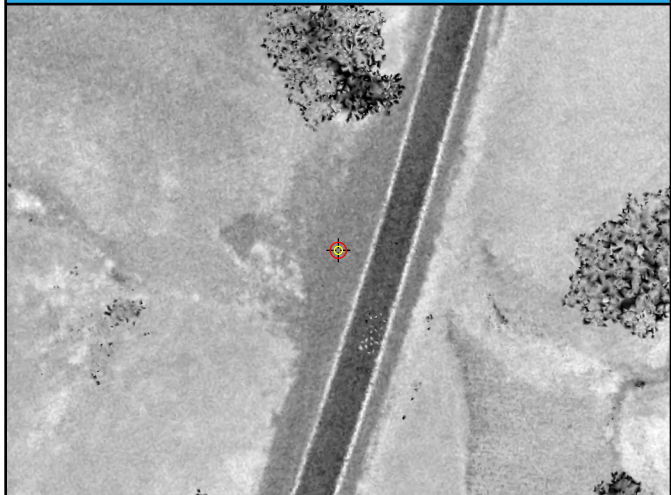
Cross Section - West to East



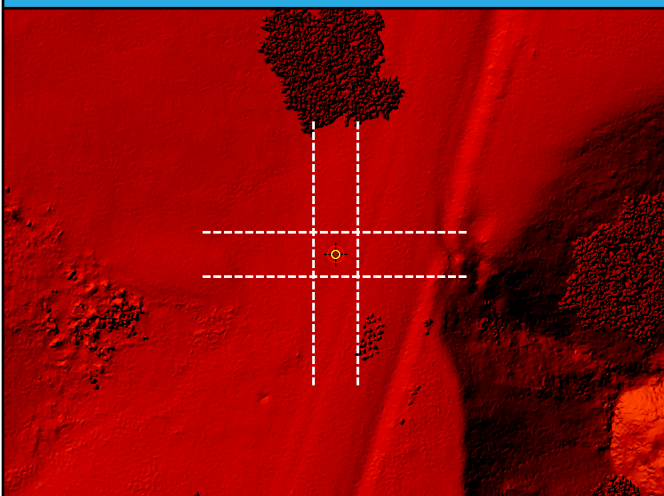
Cross Section - North to South



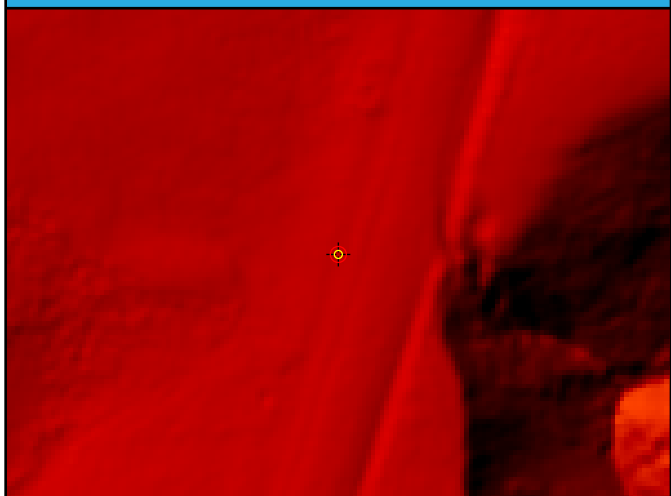
Intensity



LAS Points TIN



DEM

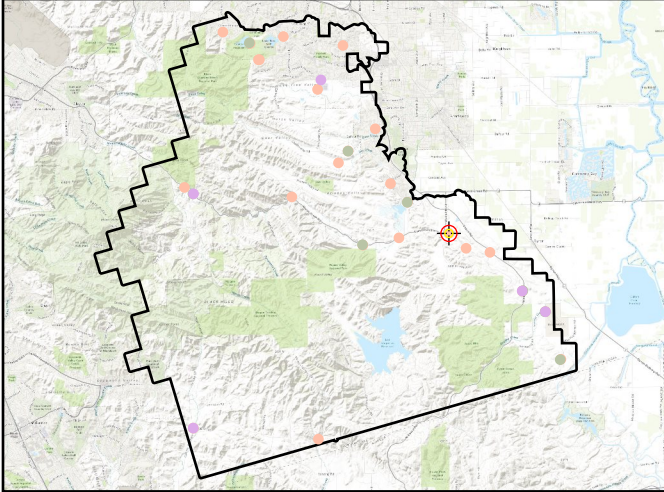


BE009

General	
Name	BE009
Type	NVA
Known Z	40.31 m
DEM Dz	3.08 cm

Ground (LAS Points)	
Dz	2.76 cm
Density	11.25 ppsm
Nearest	0.08 m
Slope	2.63°

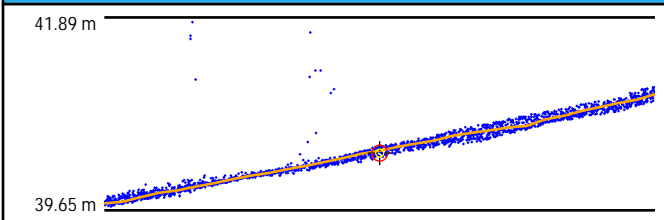
Project Context



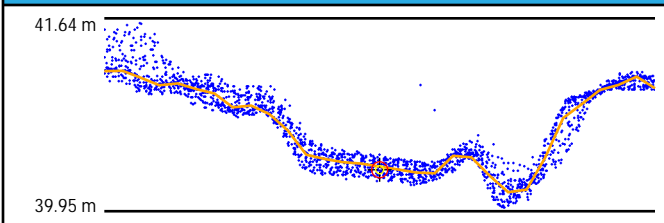
World Imagery



Cross Section - North to South



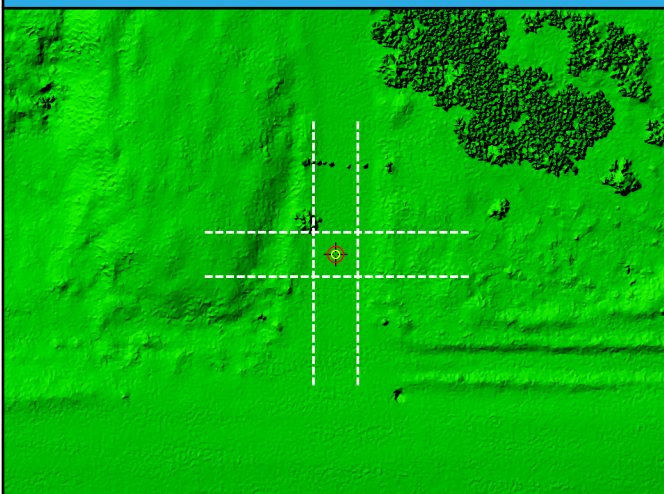
Cross Section - East to West



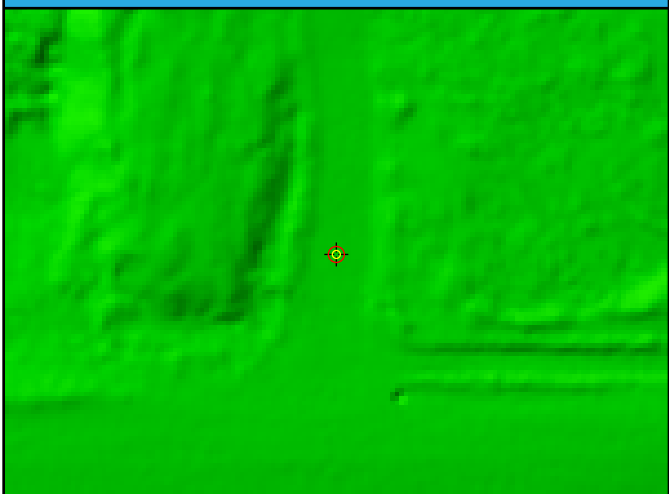
Intensity



LAS Points TIN



DEM

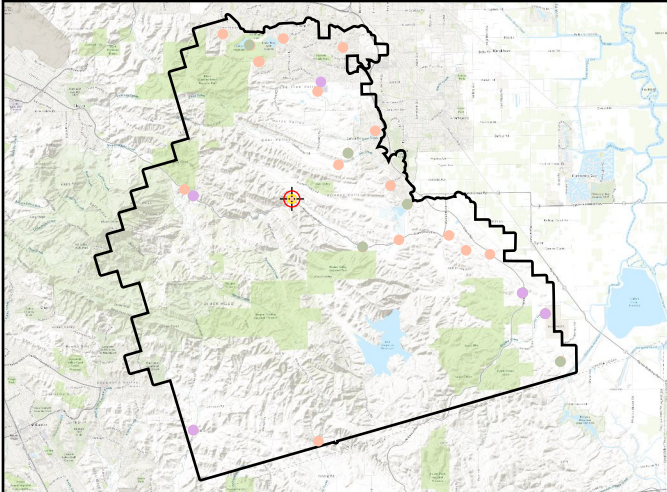


BE010

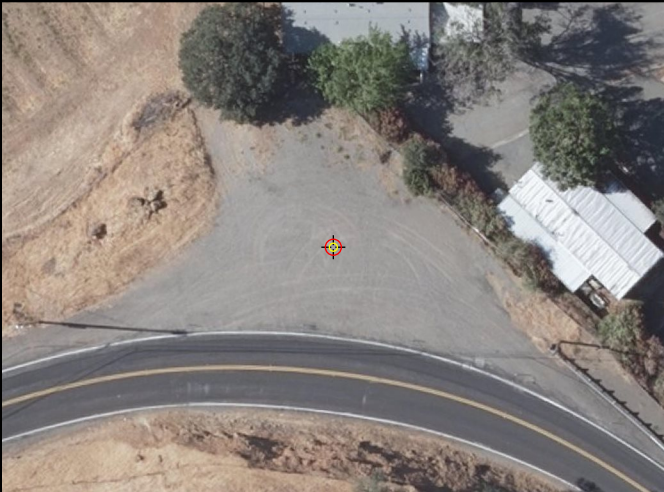
General	
Name	BE010
Type	NVA
Known Z	115.05 m
DEM Dz	1.87 cm

Ground (LAS Points)	
Dz	1.48 cm
Density	15.99 ppsm
Nearest	0.23 m
Slope	0.41°

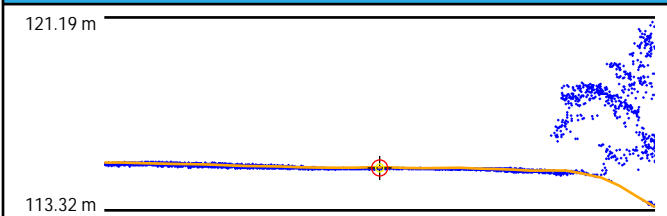
Project Context



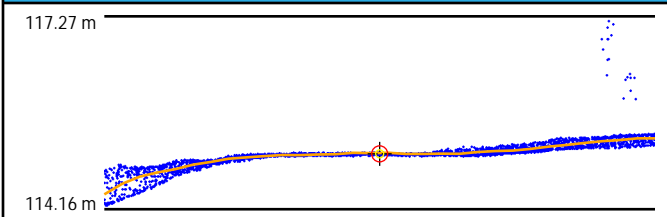
World Imagery



Cross Section - Southwest to Northeast



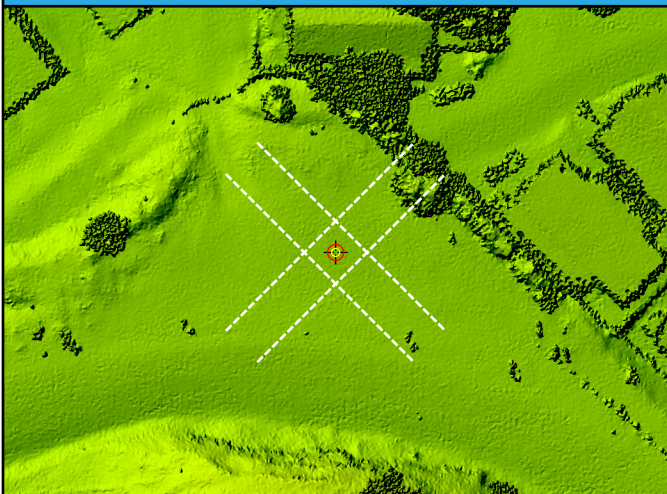
Cross Section - Northwest to Southeast



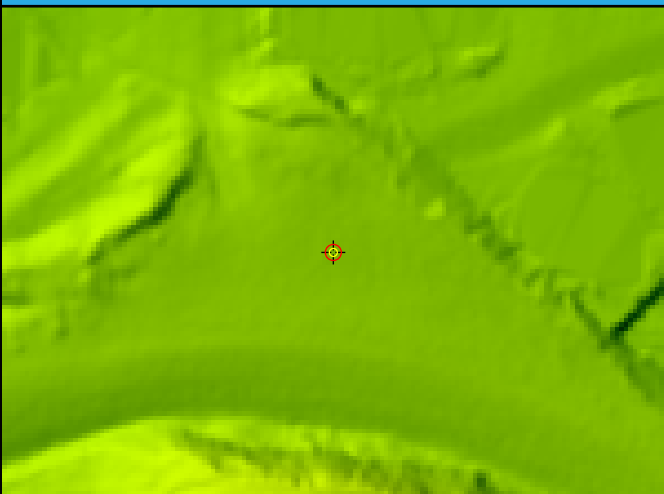
Intensity



LAS Points TIN



DEM

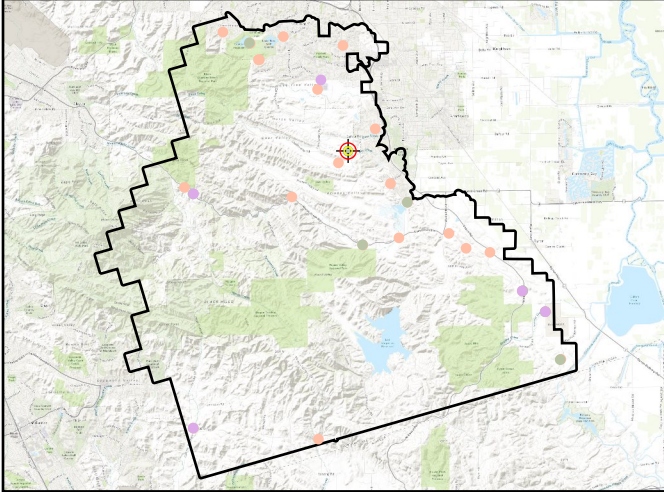


BE011

General	
Name	BE011
Type	NVA
Known Z	73.65 m
DEM Dz	3.46 cm

Ground (LAS Points)	
Dz	3.62 cm
Density	11.14 ppsm
Nearest	0.10 m
Slope	2.43°

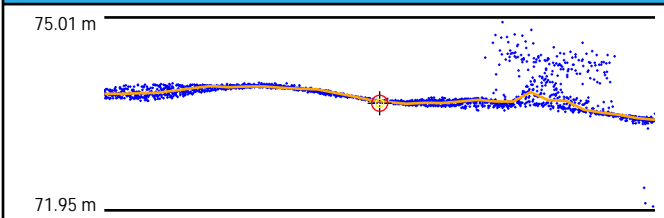
Project Context



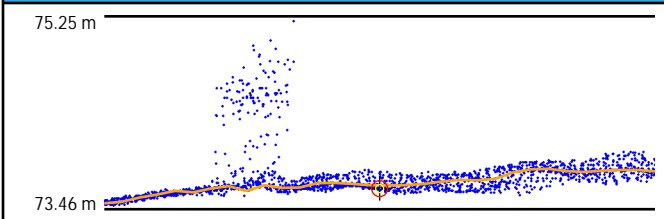
World Imagery



Cross Section - Northwest to Southeast



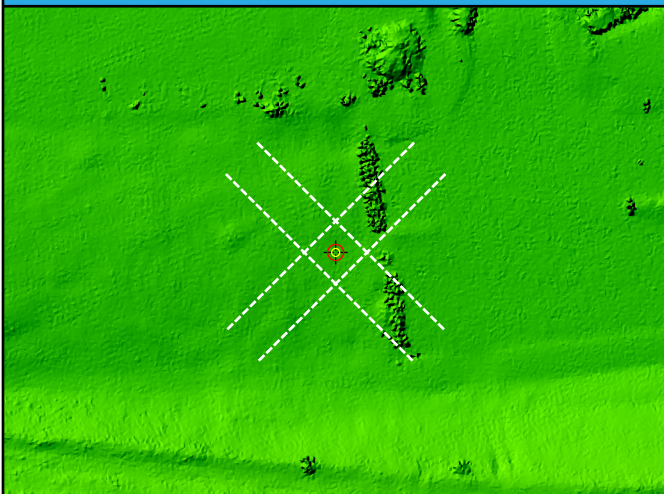
Cross Section - Northeast to Southwest



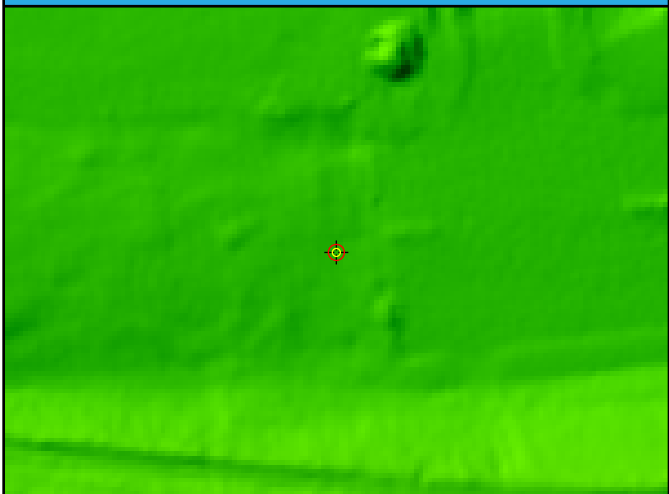
Intensity



LAS Points TIN



DEM

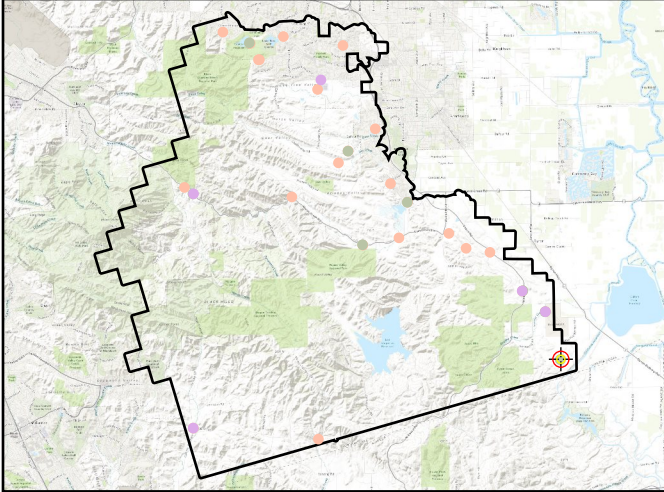


BE012

General	
Name	BE012
Type	NVA
Known Z	26.42 m
DEM Dz	2.54 cm

Ground (LAS Points)	
Dz	1.85 cm
Density	6.97 ppsm
Nearest	0.15 m
Slope	4.86°

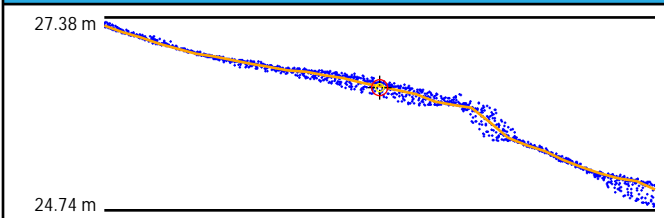
Project Context



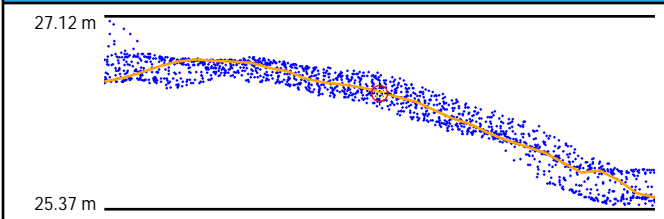
World Imagery



Cross Section - West to East



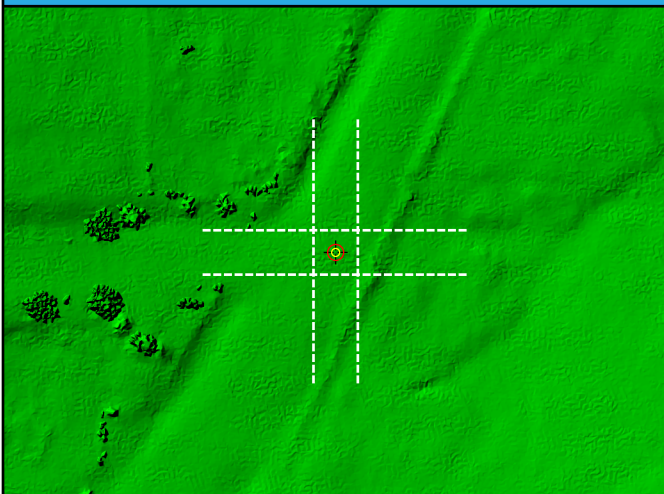
Cross Section - North to South



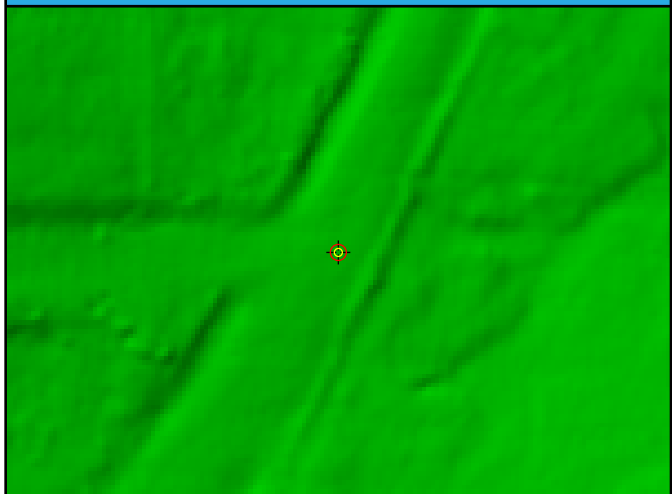
Intensity



LAS Points TIN



DEM

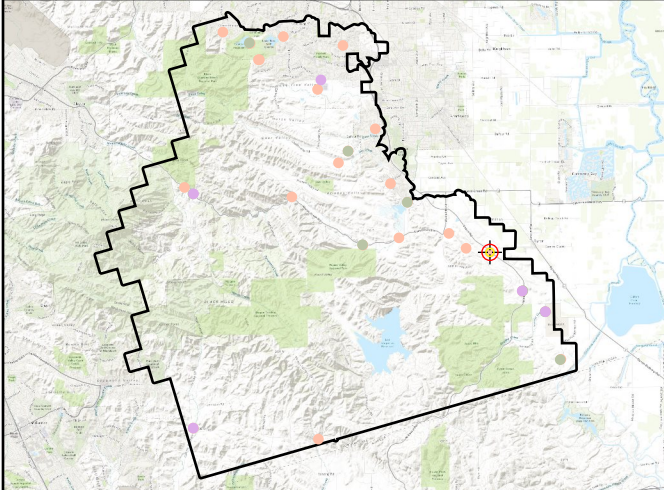


BE013

General	
Name	BE013
Type	NVA
Known Z	35.35 m
DEM Dz	3.53 cm

Ground (LAS Points)	
Dz	2.91 cm
Density	9.09 ppsm
Nearest	0.10 m
Slope	1.72°

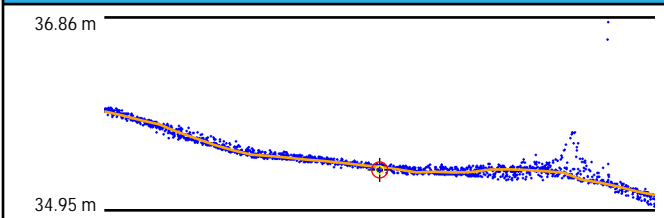
Project Context



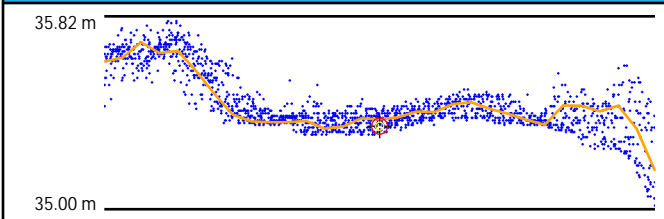
World Imagery



Cross Section - North to South



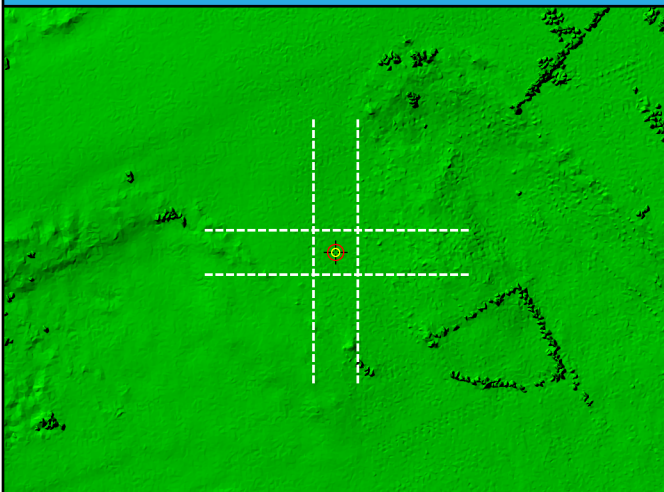
Cross Section - East to West



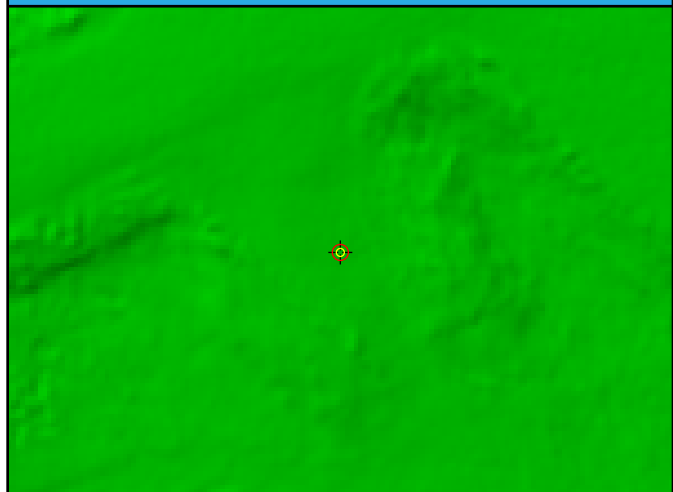
Intensity



LAS Points TIN



DEM

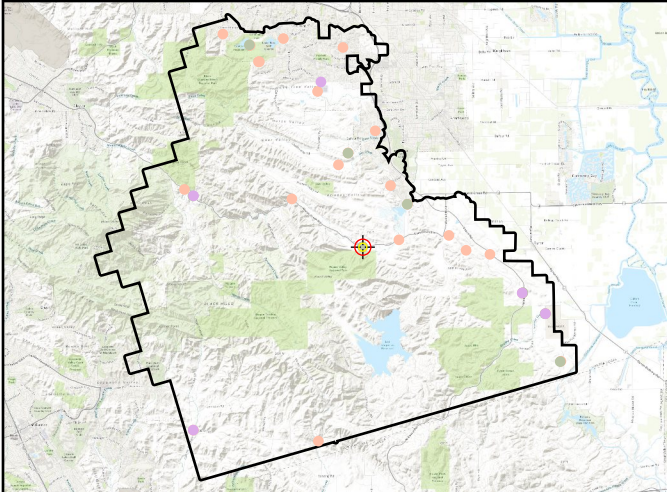


BE014

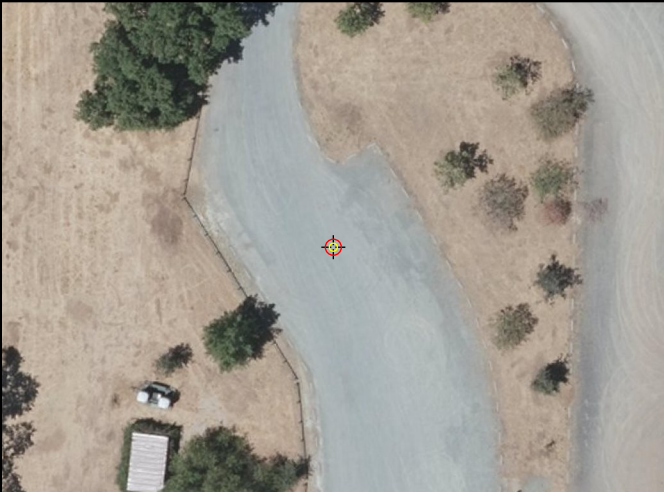
General	
Name	BE014
Type	NVA
Known Z	76.27 m
DEM Dz	1.37 cm

Ground (LAS Points)	
Dz	1.49 cm
Density	11.64 ppsm
Nearest	0.05 m
Slope	0.86°

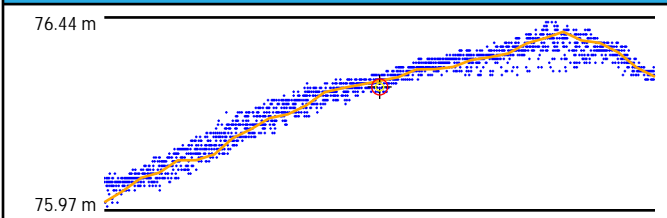
Project Context



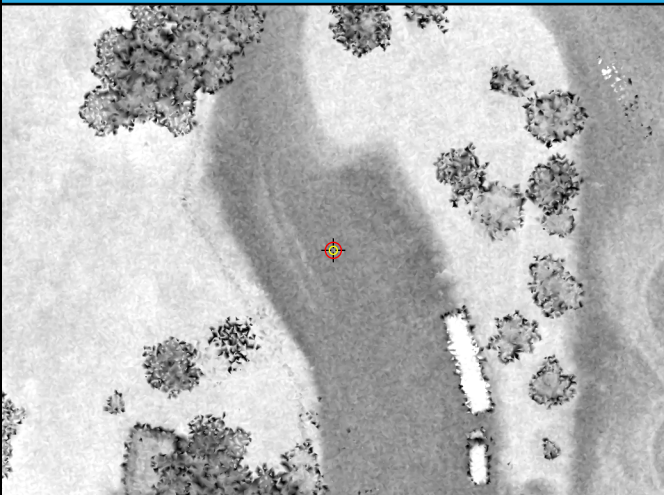
World Imagery



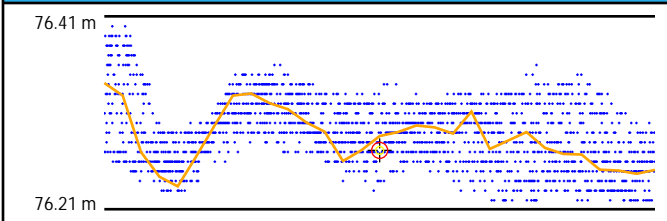
Cross Section - West to East



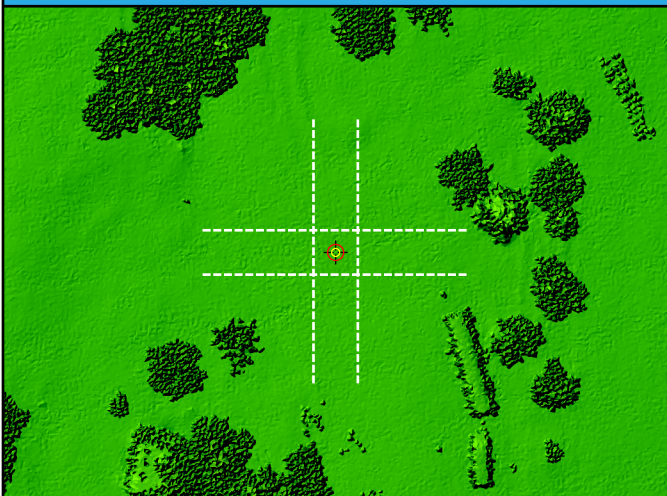
Intensity



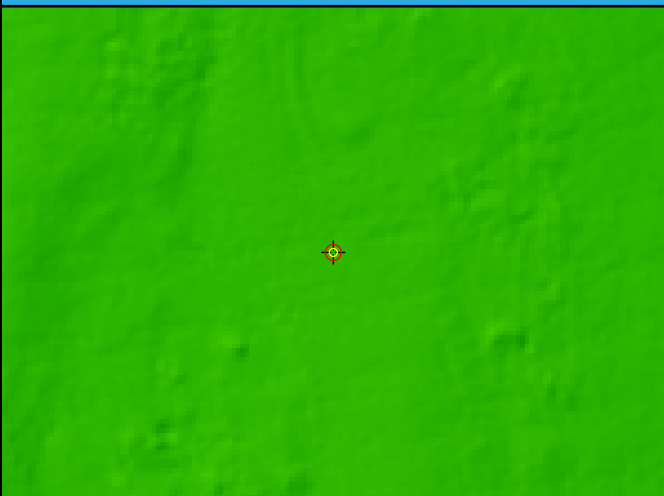
Cross Section - North to South



LAS Points TIN



DEM

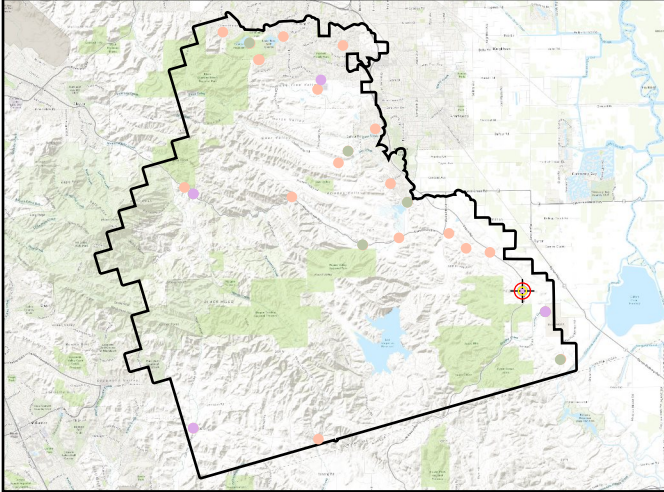


BE015

General	
Name	BE015
Type	NVA
Known Z	35.39 m
DEM Dz	0.79 cm

Ground (LAS Points)	
Dz	0.74 cm
Density	9.05 ppsm
Nearest	0.12 m
Slope	2.63°

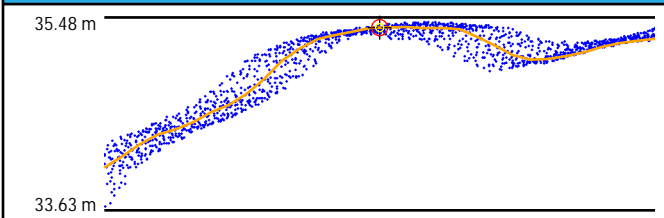
Project Context



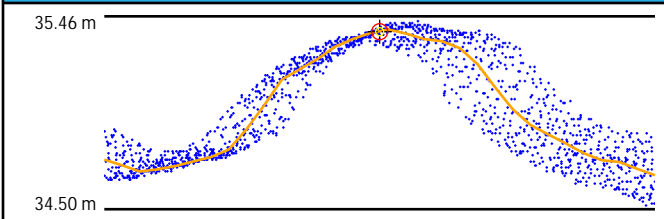
World Imagery



Cross Section - Southwest to Northeast



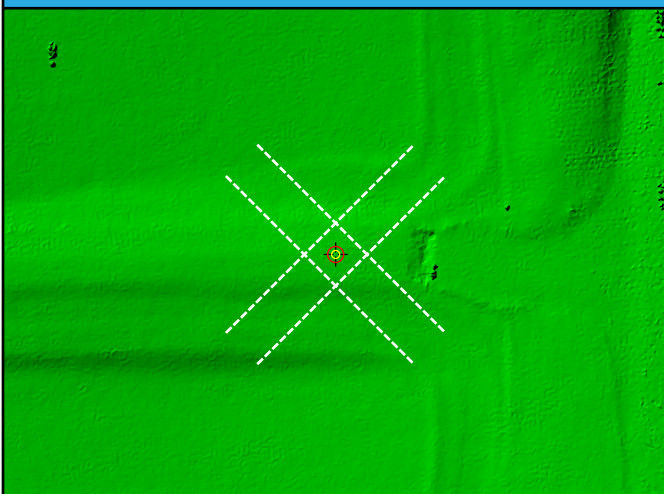
Cross Section - Northwest to Southeast



Intensity



LAS Points TIN



DEM

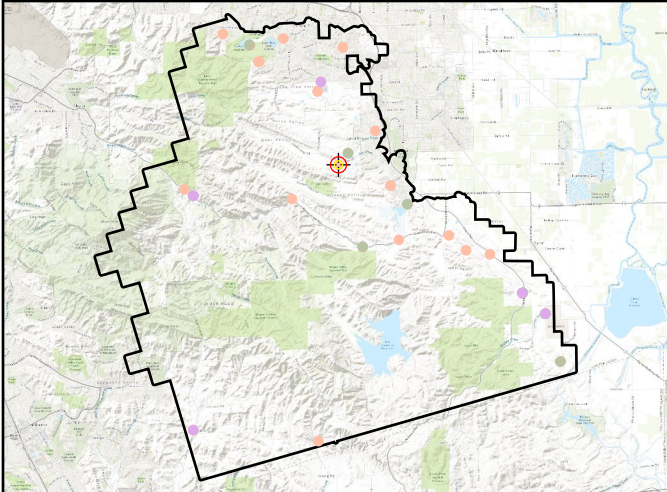


BE016

General	
Name	BE016
Type	NVA
Known Z	78.45 m
DEM Dz	4.99 cm

Ground (LAS Points)	
Dz	4.86 cm
Density	11.39 ppsm
Nearest	0.07 m
Slope	4.29°

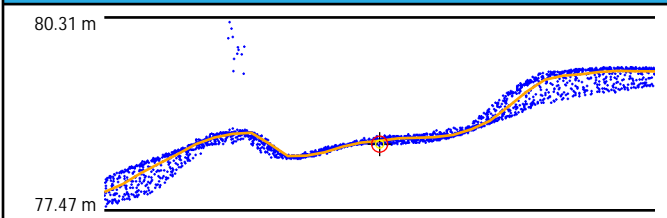
Project Context



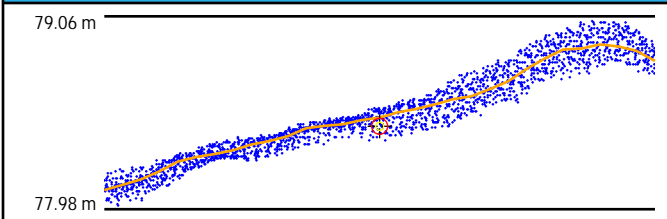
World Imagery



Cross Section - North to South



Cross Section - East to West



Intensity



LAS Points TIN



DEM

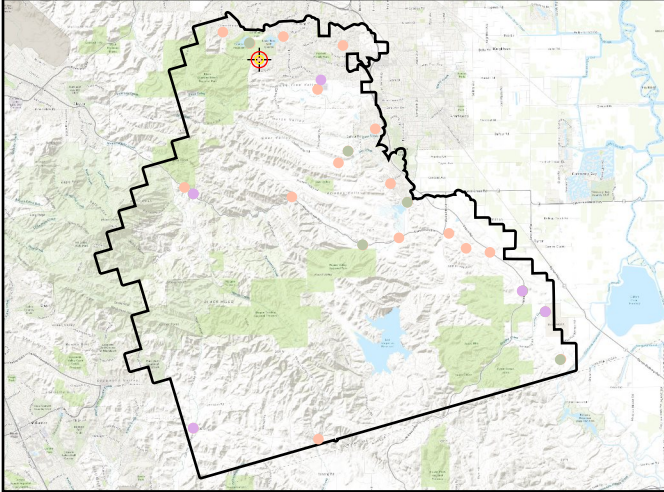


BE017

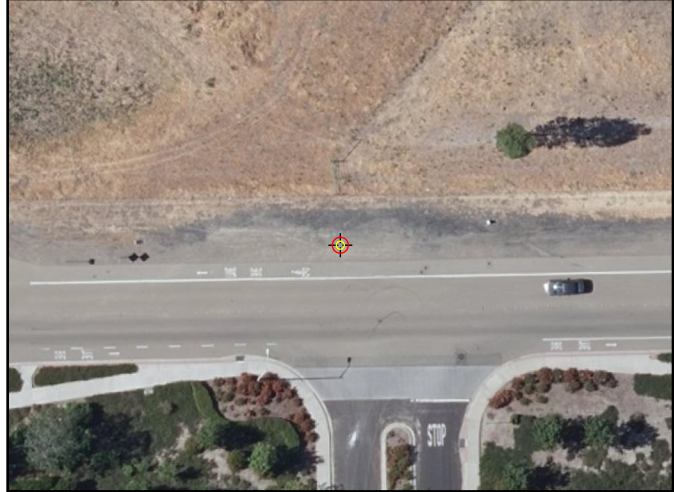
General	
Name	BE017
Type	NVA
Known Z	67.73 m
DEM Dz	-2.03 cm

Ground (LAS Points)	
Dz	-2.20 cm
Density	15.21 ppsm
Nearest	0.29 m
Slope	2.02°

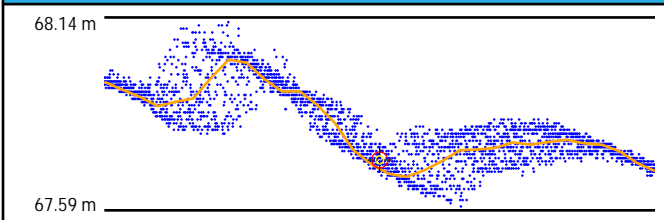
Project Context



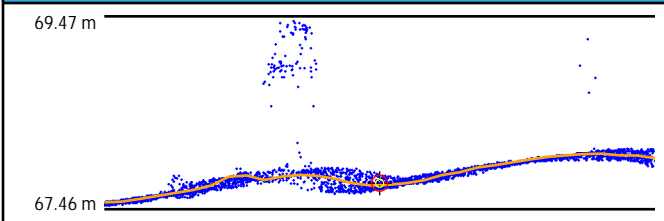
World Imagery



Cross Section - Northwest to Southeast



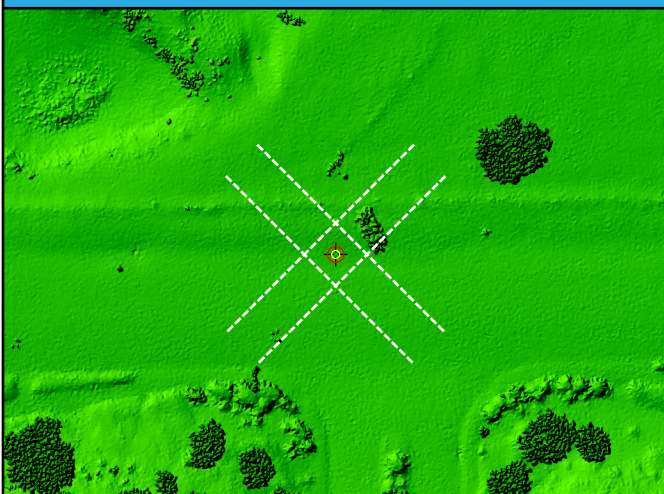
Cross Section - Northeast to Southwest



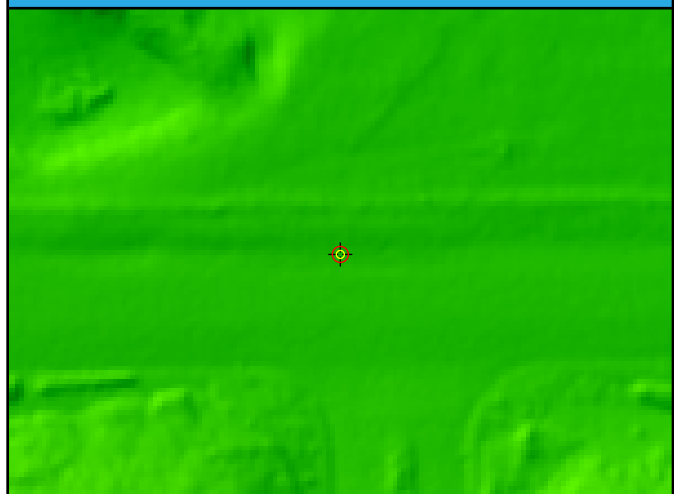
Intensity



LAS Points TIN



DEM

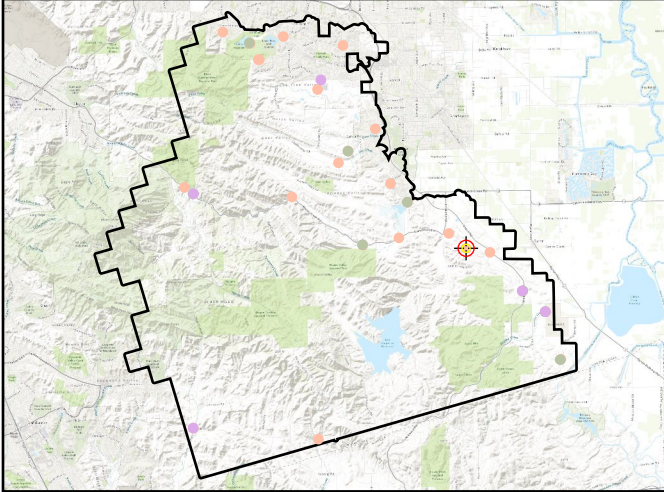


BE018

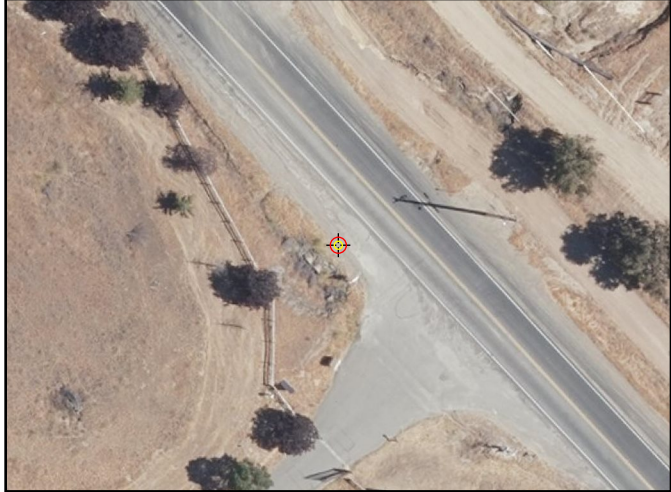
General	
Name	BE018
Type	NVA
Known Z	44.50 m
DEM Dz	-2.86 cm

Ground (LAS Points)	
Dz	-3.00 cm
Density	8.31 ppsm
Nearest	0.07 m
Slope	19.11°

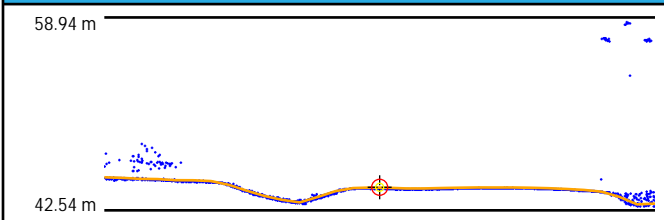
Project Context



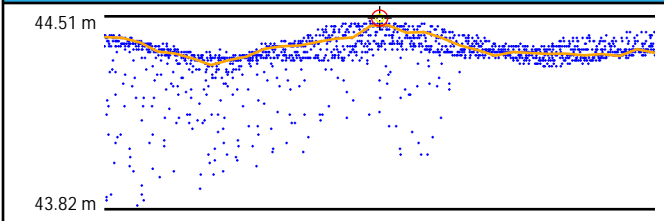
World Imagery



Cross Section - Southwest to Northeast



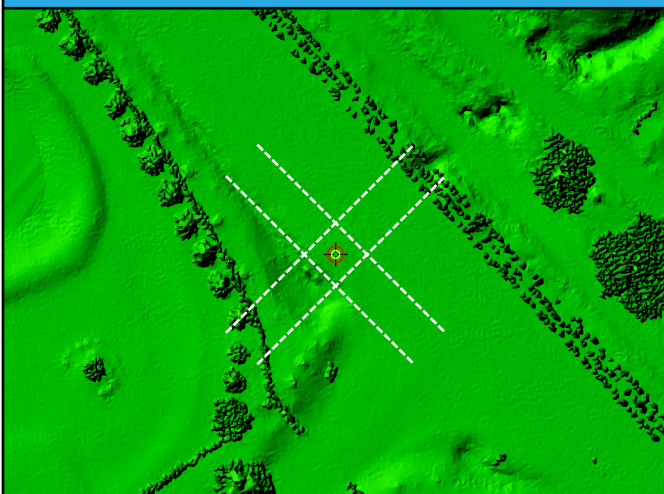
Cross Section - Northwest to Southeast



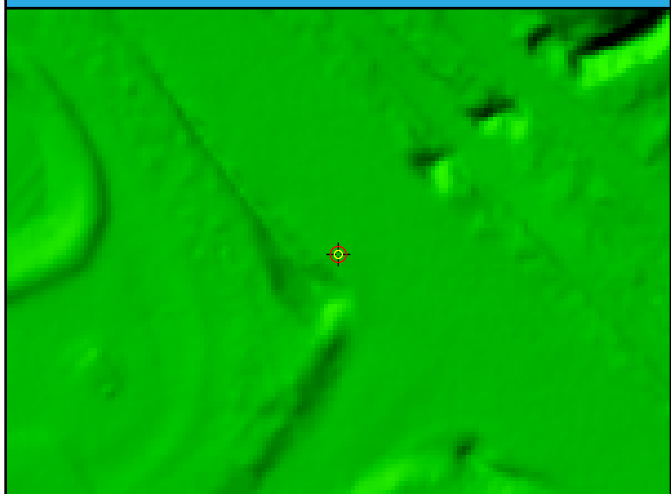
Intensity



LAS Points TIN



DEM

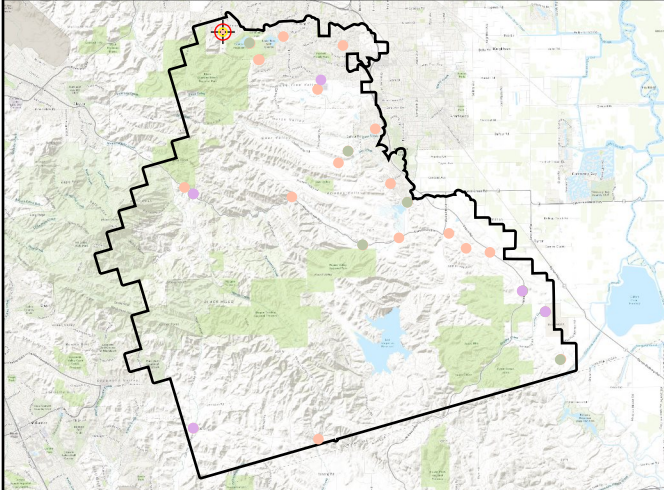


UA001

General	
Name	UA001
Type	NVA
Known Z	59.79 m
DEM Dz	-4.73 cm

Ground (LAS Points)	
Dz	-4.22 cm
Density	13.37 ppsm
Nearest	0.17 m
Slope	2.29°

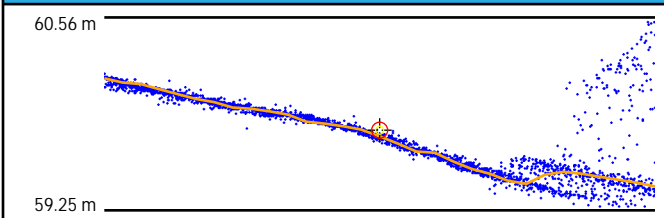
Project Context



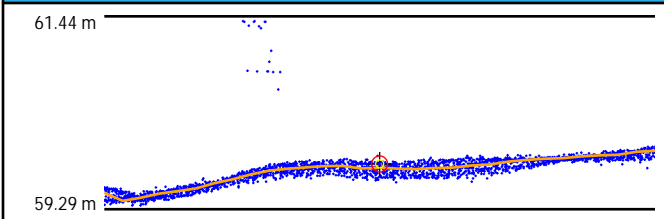
World Imagery



Cross Section - North to South



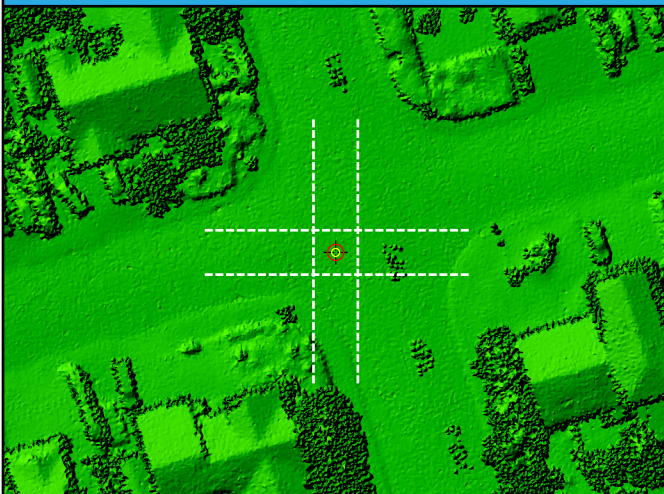
Cross Section - East to West



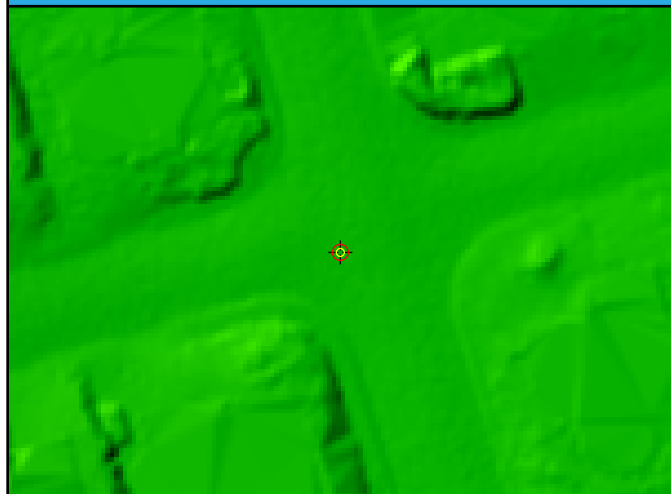
Intensity



LAS Points TIN



DEM

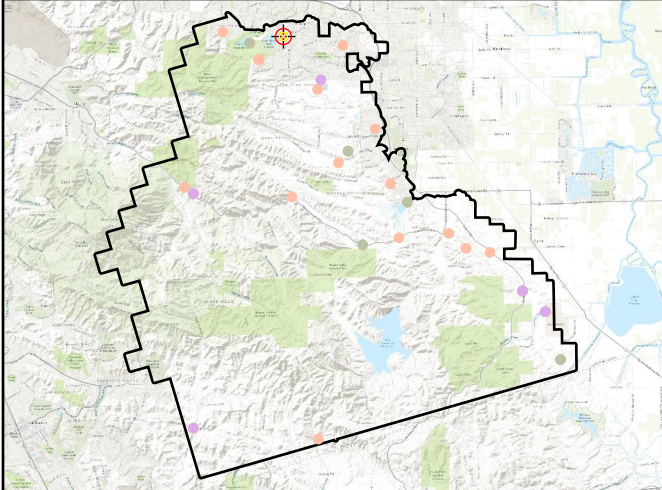


UA002

General	
Name	UA002
Type	NVA
Known Z	55.38 m
DEM Dz	-1.56 cm

Ground (LAS Points)	
Dz	-1.14 cm
Density	10.86 ppsm
Nearest	0.15 m
Slope	2.29°

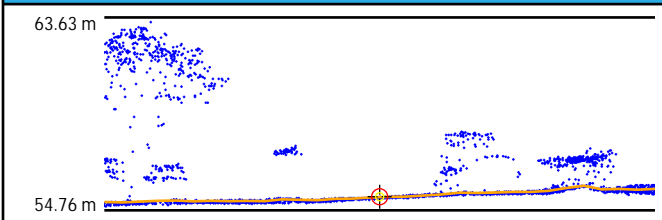
Project Context



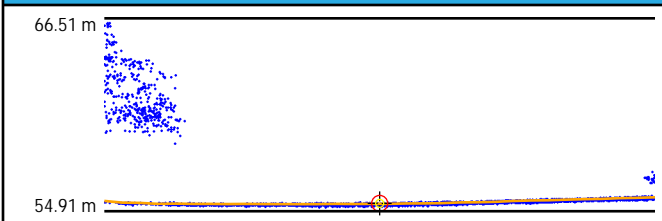
World Imagery



Cross Section - Southwest to Northeast



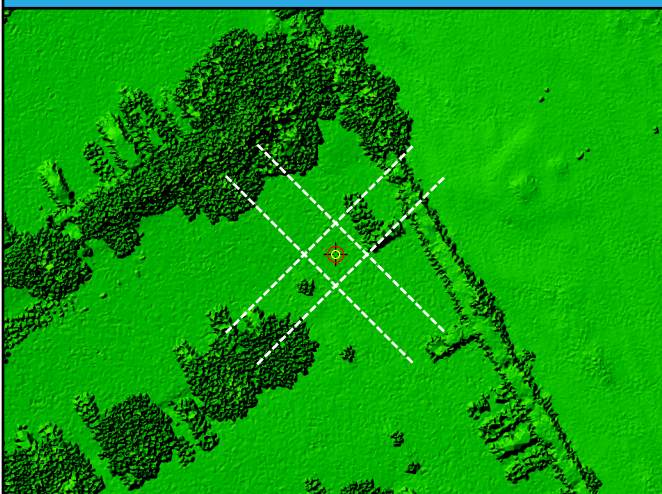
Cross Section - Northwest to Southeast



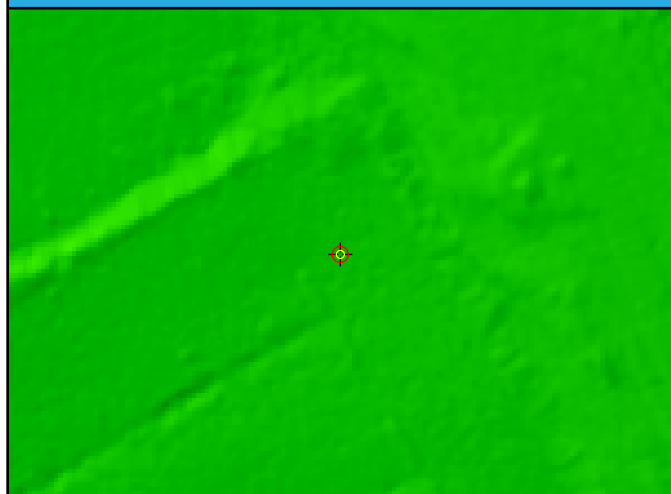
Intensity



LAS Points TIN



DEM

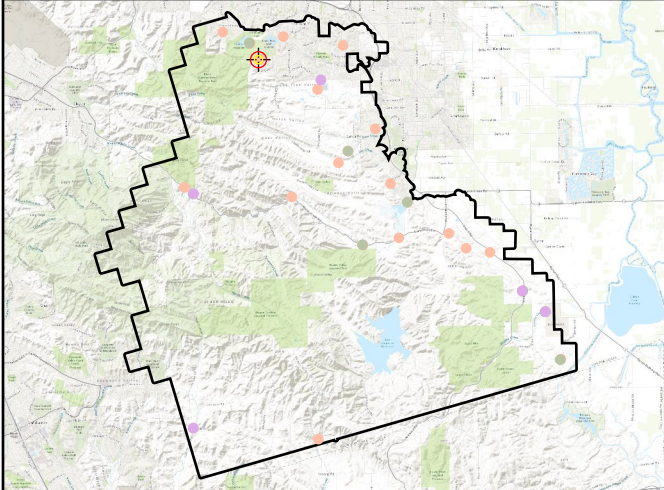


UA003

General	
Name	UA003
Type	NVA
Known Z	68.52 m
DEM Dz	-3.49 cm

Ground (LAS Points)	
Dz	-3.73 cm
Density	15.88 ppsm
Nearest	0.04 m
Slope	1.42°

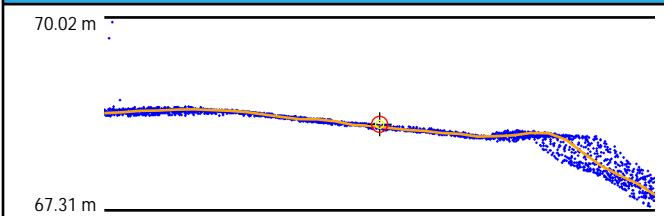
Project Context



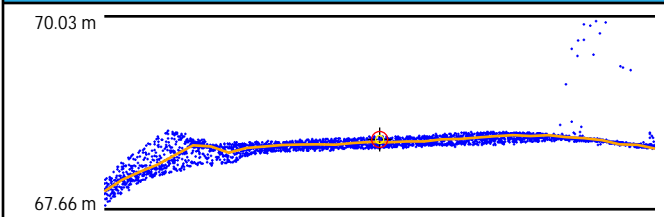
World Imagery



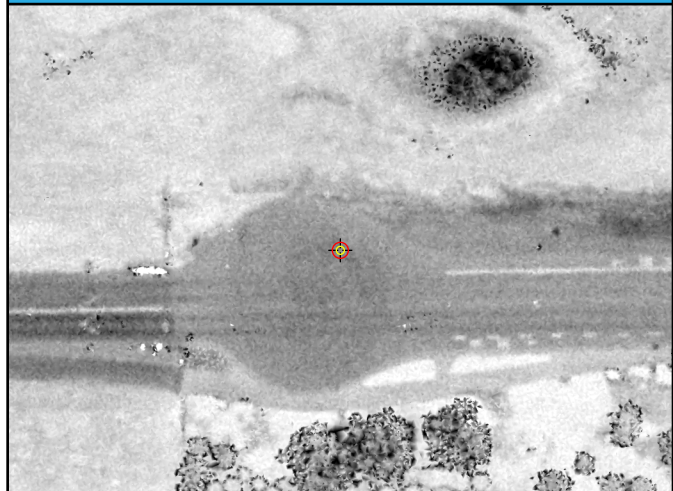
Cross Section - Southwest to Northeast



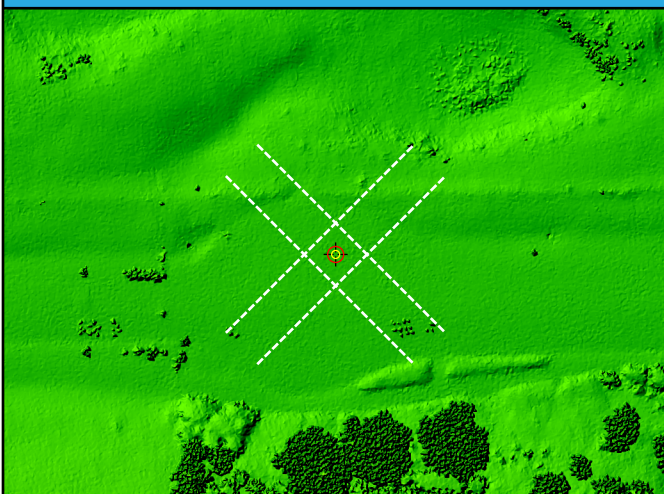
Cross Section - Northwest to Southeast



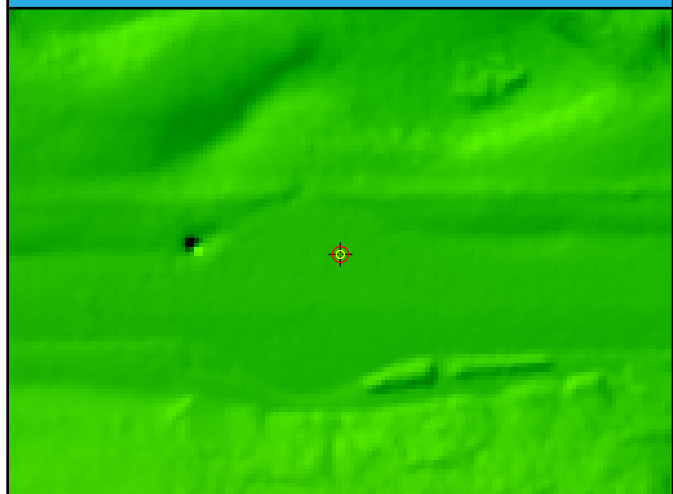
Intensity



LAS Points TIN



DEM

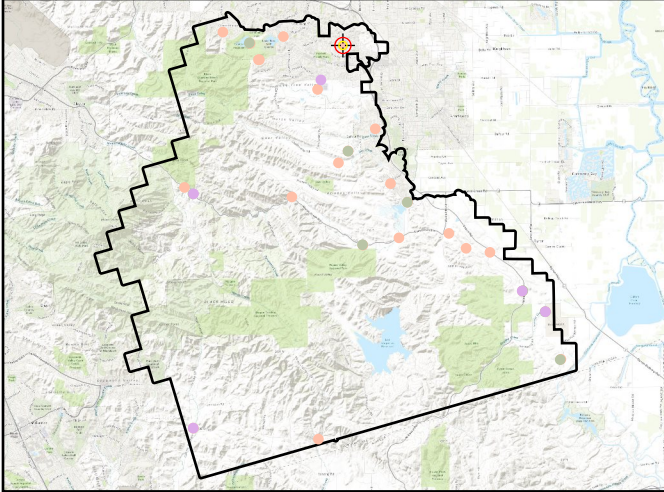


UA004

General	
Name	UA004
Type	NVA
Known Z	58.62 m
DEM Dz	0.01 cm

Ground (LAS Points)	
Dz	0.43 cm
Density	11.07 ppsm
Nearest	0.10 m
Slope	1.72°

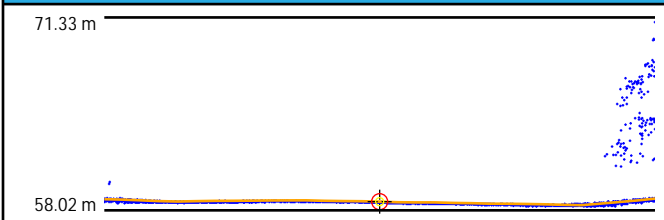
Project Context



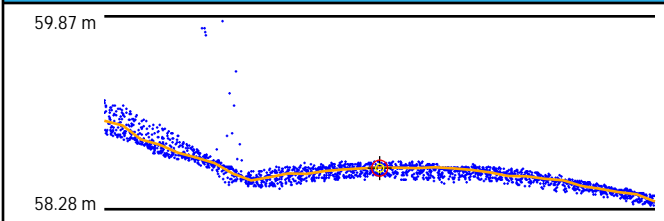
World Imagery



Cross Section - North to South



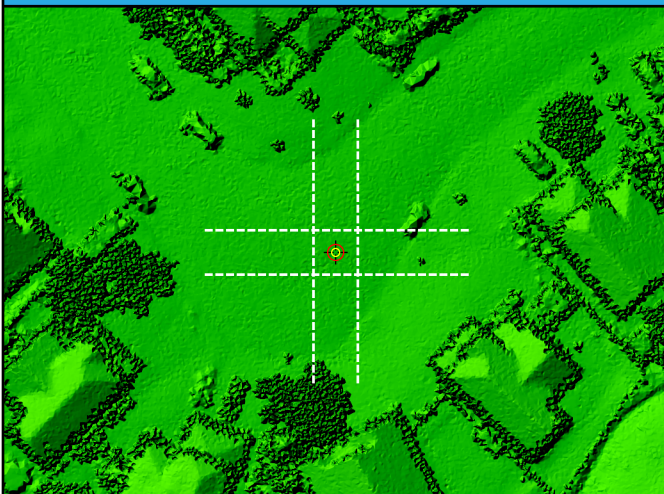
Cross Section - East to West



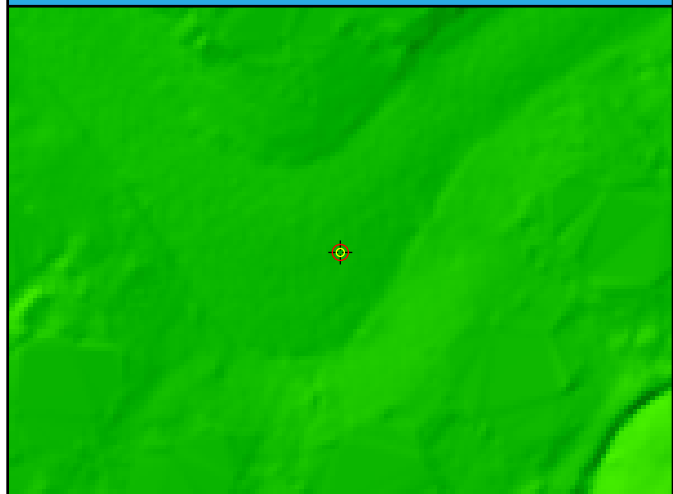
Intensity



LAS Points TIN



DEM

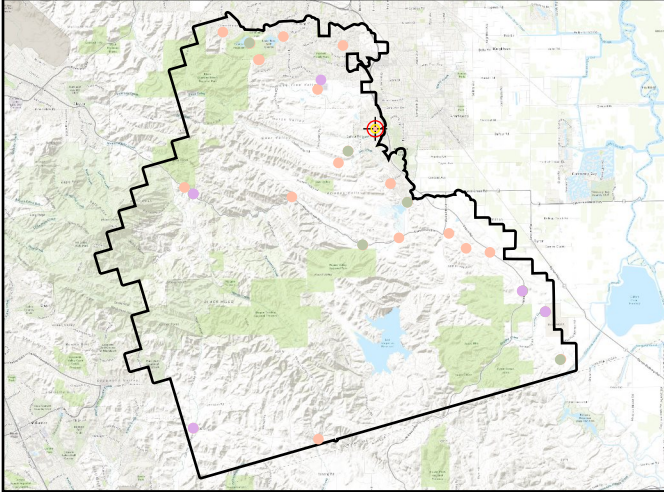


UA005

General	
Name	UA005
Type	NVA
Known Z	64.33 m
DEM Dz	-1.71 cm

Ground (LAS Points)	
Dz	-1.76 cm
Density	9.16 ppsm
Nearest	0.18 m
Slope	1.62°

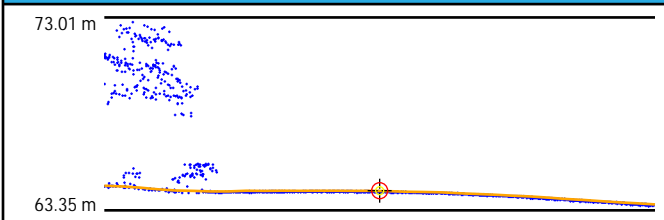
Project Context



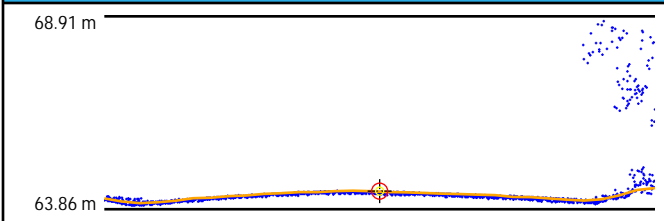
World Imagery



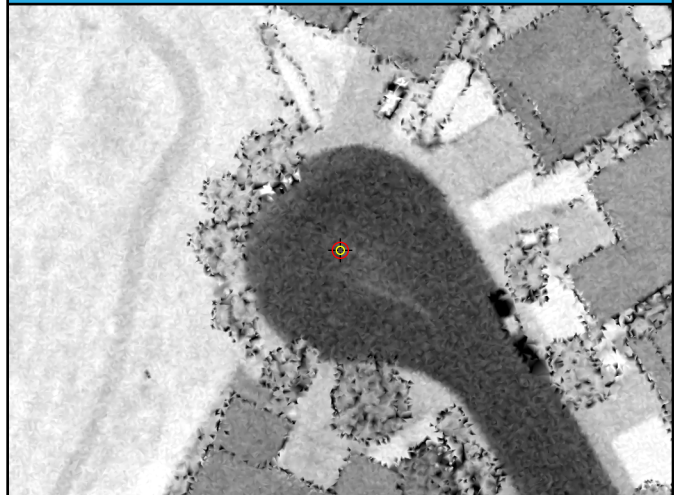
Cross Section - Northwest to Southeast



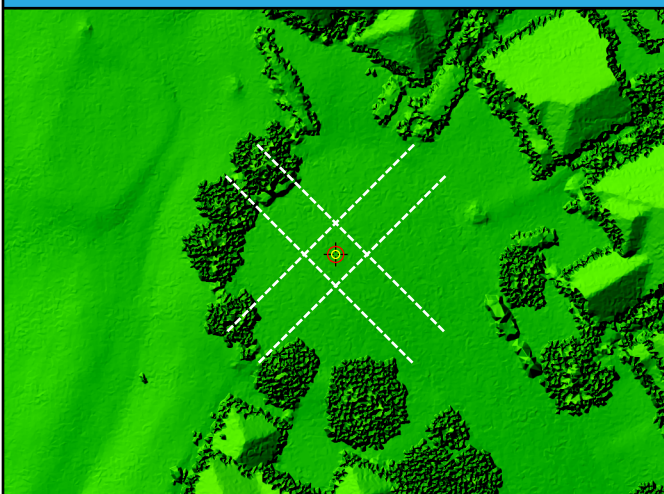
Cross Section - Northeast to Southwest



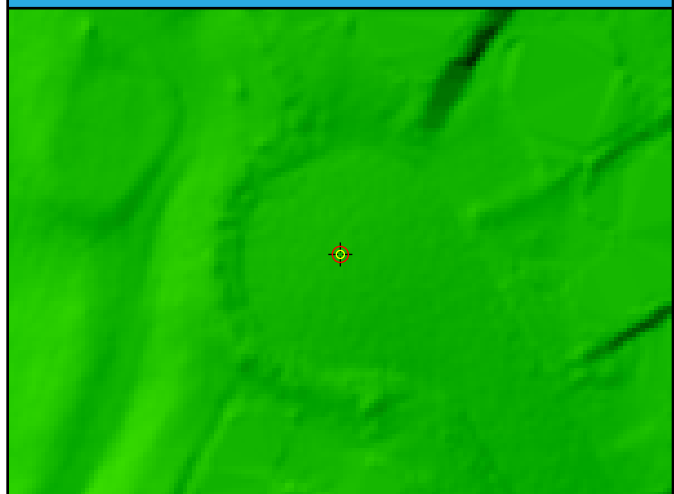
Intensity



LAS Points TIN



DEM

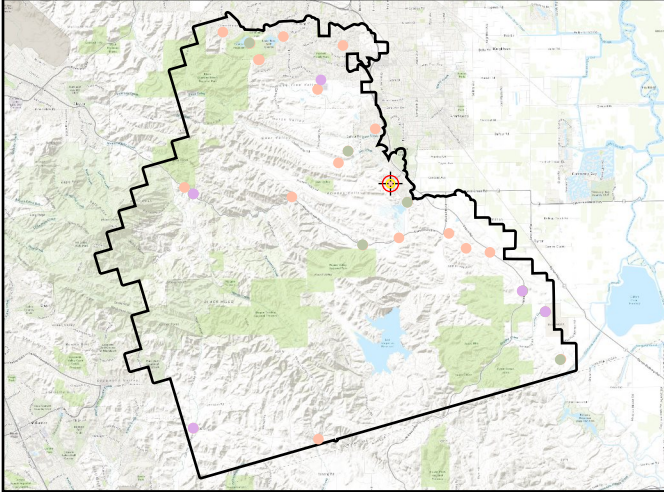


UA006

General	
Name	UA006
Type	NVA
Known Z	74.51 m
DEM Dz	3.37 cm

Ground (LAS Points)	
Dz	3.03 cm
Density	9.30 ppsm
Nearest	0.16 m
Slope	2.00°

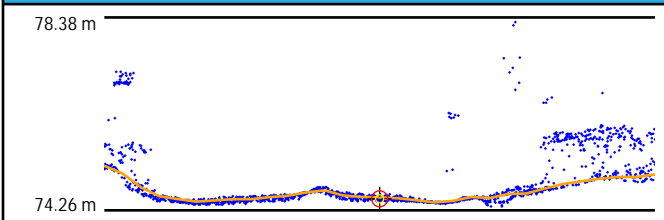
Project Context



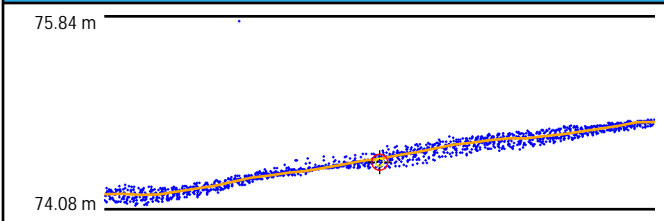
World Imagery



Cross Section - North to South



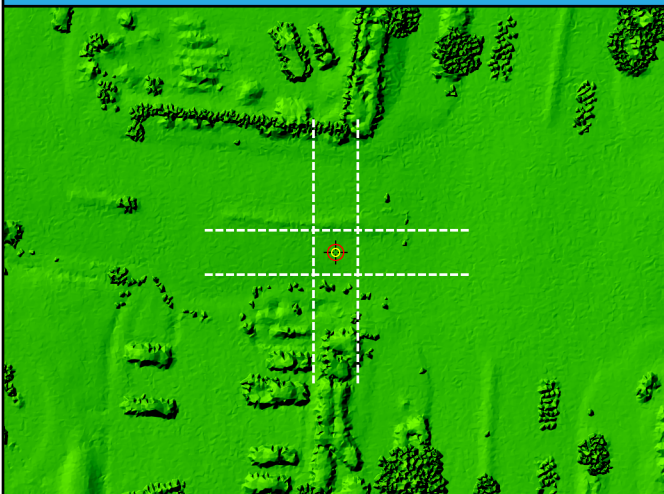
Cross Section - East to West



Intensity



LAS Points TIN



DEM

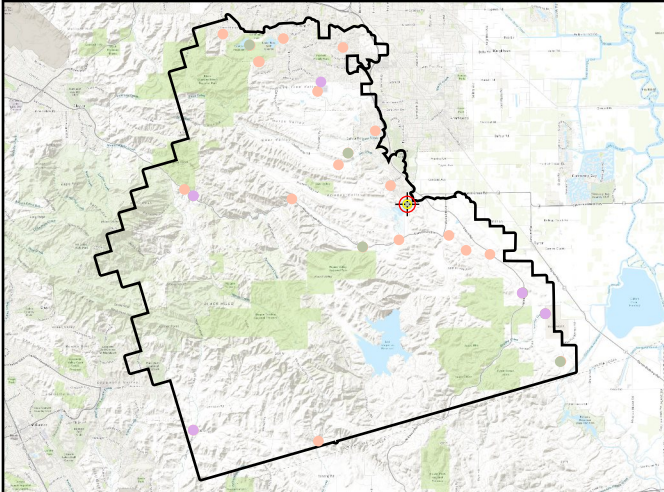


FR001

General	
Name	FR001
Type	VVA
Known Z	45.61 m
DEM Dz	5.67 cm

Ground (LAS Points)	
Dz	6.45 cm
Density	6.15 ppsm
Nearest	0.07 m
Slope	5.14°

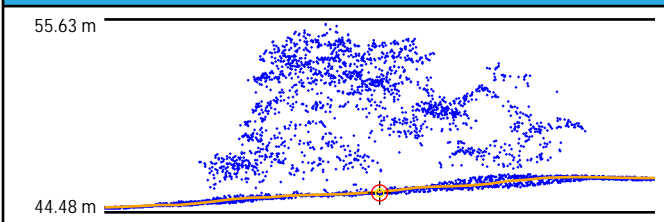
Project Context



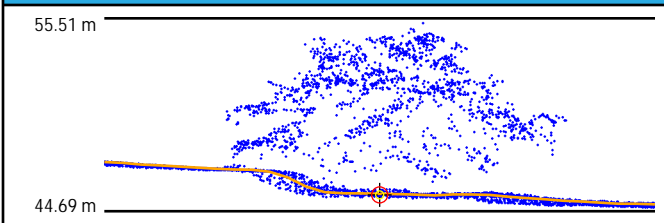
World Imagery



Cross Section - North to South



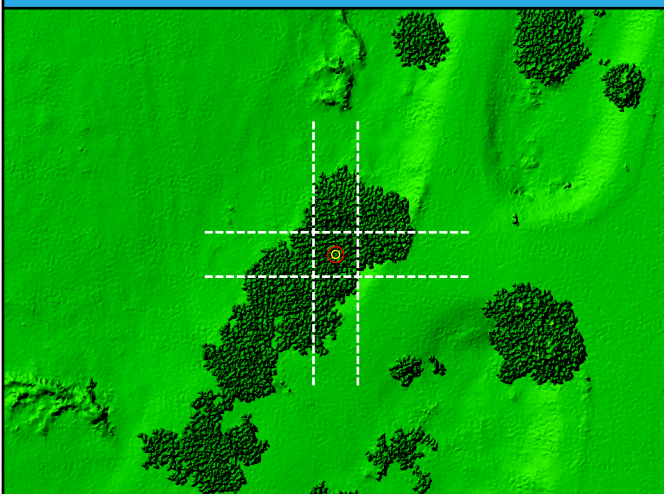
Cross Section - East to West



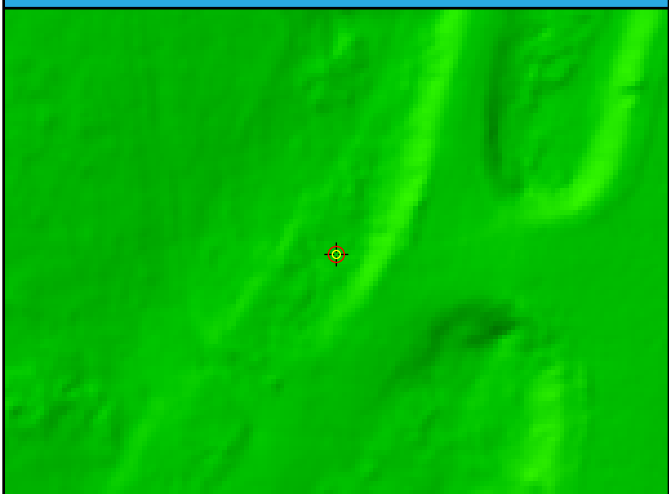
Intensity



LAS Points TIN



DEM

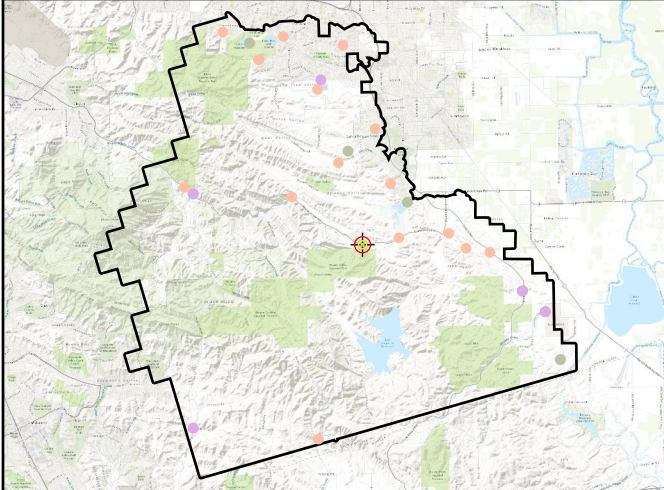


FR002

General	
Name	FR002
Type	VVA
Known Z	76.37 m
DEM Dz	-2.43 cm

Ground (LAS Points)	
Dz	-2.31 cm
Density	6.44 ppsm
Nearest	0.26 m
Slope	4.65°

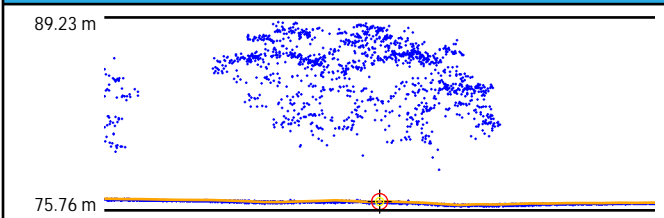
Project Context



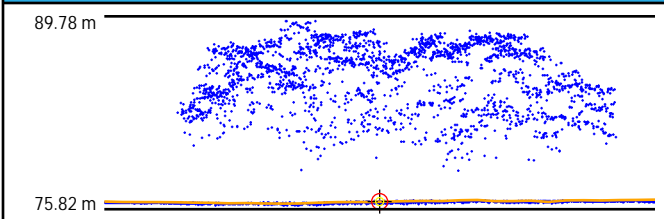
World Imagery



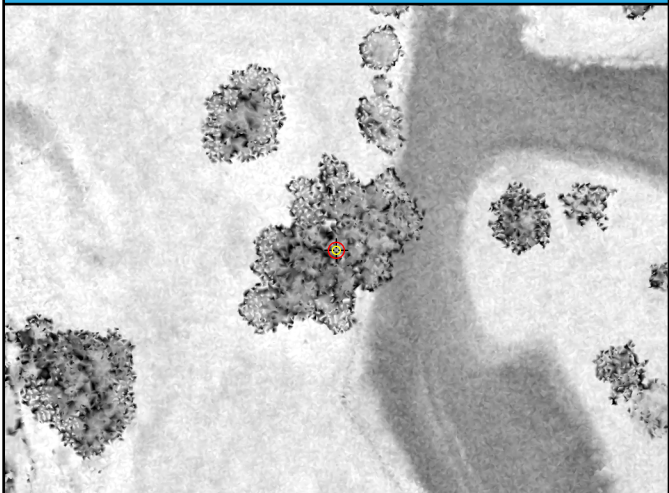
Cross Section - Northwest to Southeast



Cross Section - Northeast to Southwest



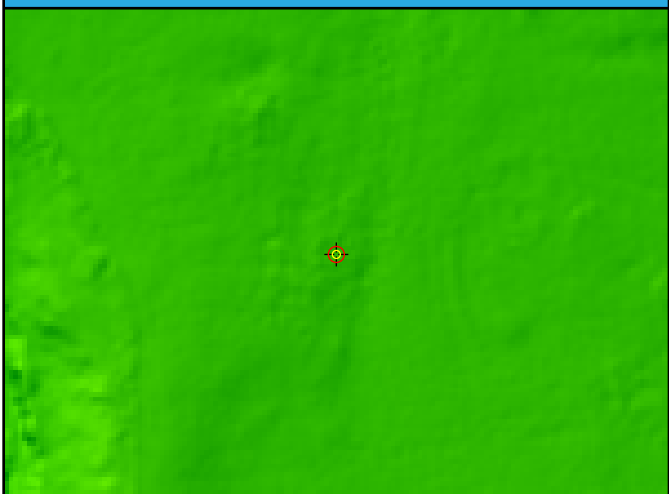
Intensity



LAS Points TIN



DEM

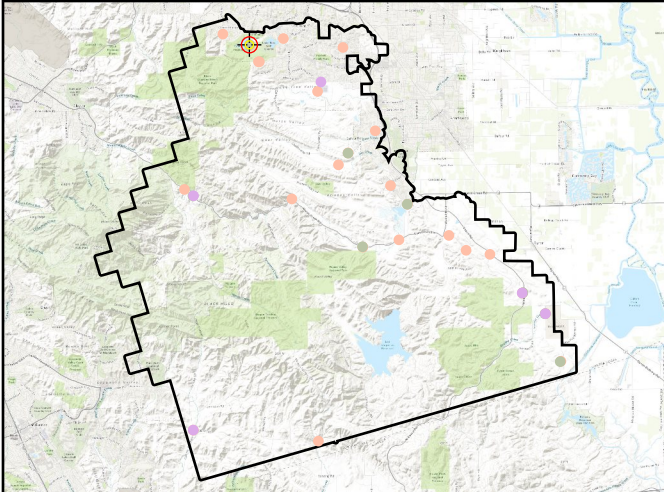


TG001

General	
Name	TG001
Type	VVA
Known Z	66.74 m
DEM Dz	3.84 cm

Ground (LAS Points)	
Dz	3.55 cm
Density	11.39 ppsm
Nearest	0.11 m
Slope	9.83°

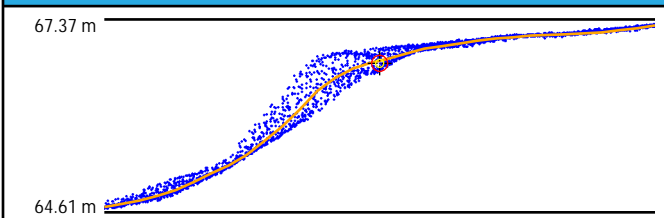
Project Context



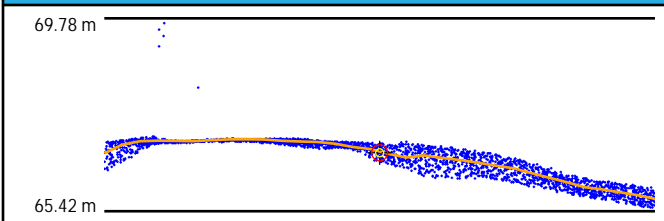
World Imagery



Cross Section - Northwest to Southeast



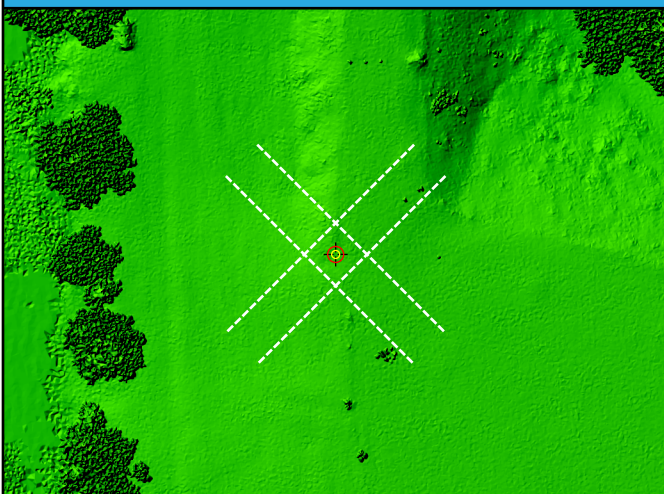
Cross Section - Northeast to Southwest



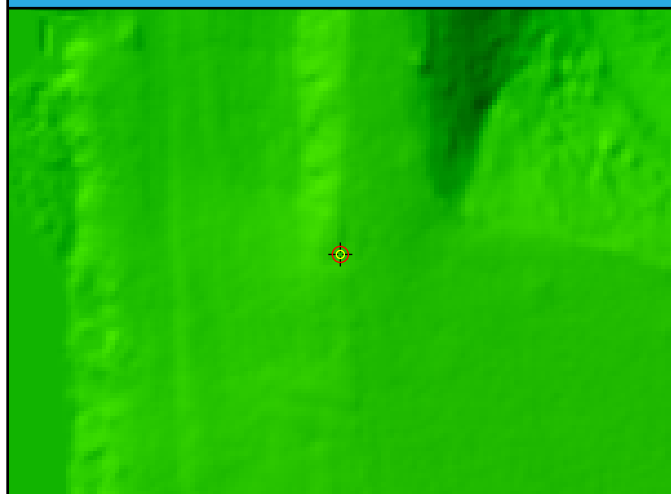
Intensity



LAS Points TIN



DEM

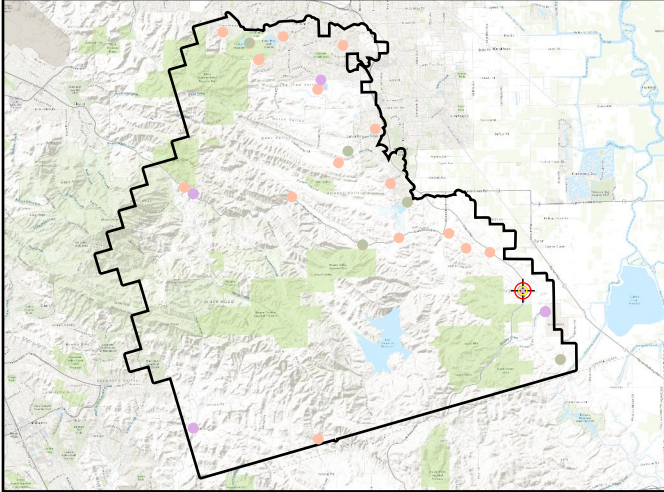


TG002

General	
Name	TG002
Type	VVA
Known Z	36.22 m
DEM Dz	1.11 cm

Ground (LAS Points)	
Dz	1.16 cm
Density	9.55 ppsm
Nearest	0.14 m
Slope	7.05°

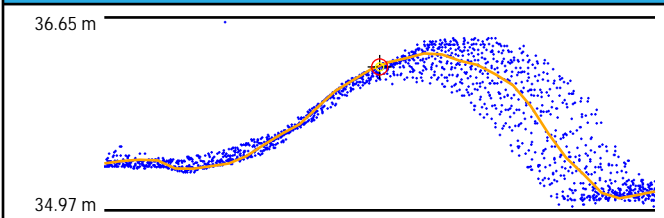
Project Context



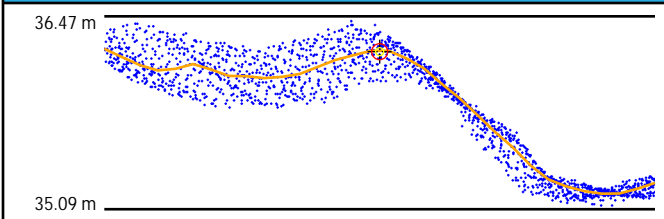
World Imagery



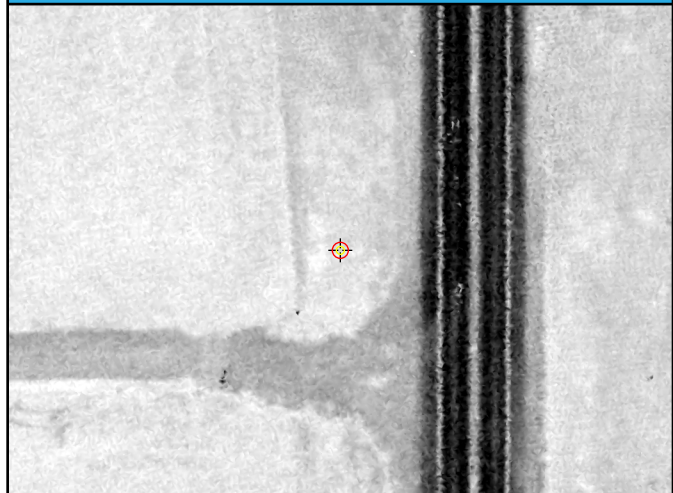
Cross Section - Southwest to Northeast



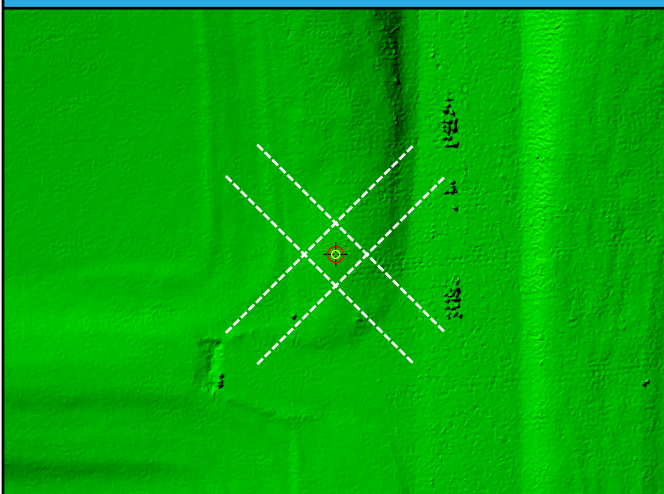
Cross Section - Northwest to Southeast



Intensity



LAS Points TIN



DEM

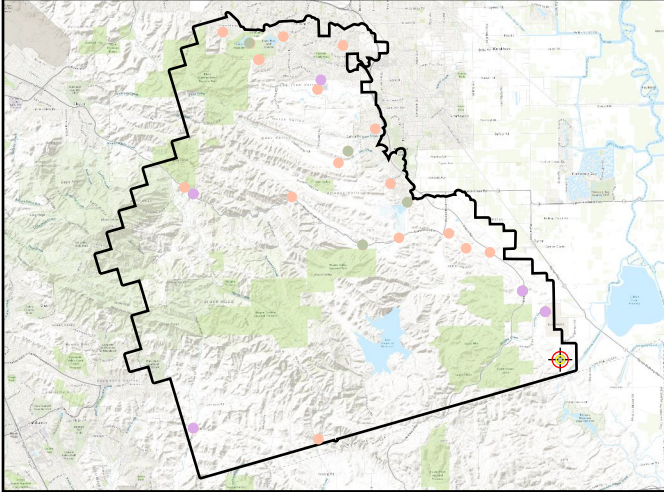


TG003

General	
Name	TG003
Type	VVA
Known Z	27.34 m
DEM Dz	7.59 cm

Ground (LAS Points)	
Dz	7.97 cm
Density	7.39 ppsm
Nearest	0.19 m
Slope	7.05°

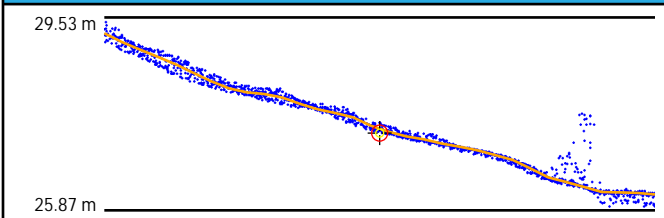
Project Context



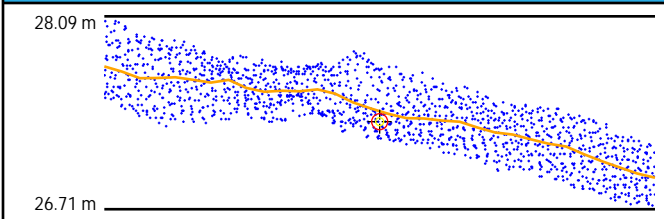
World Imagery



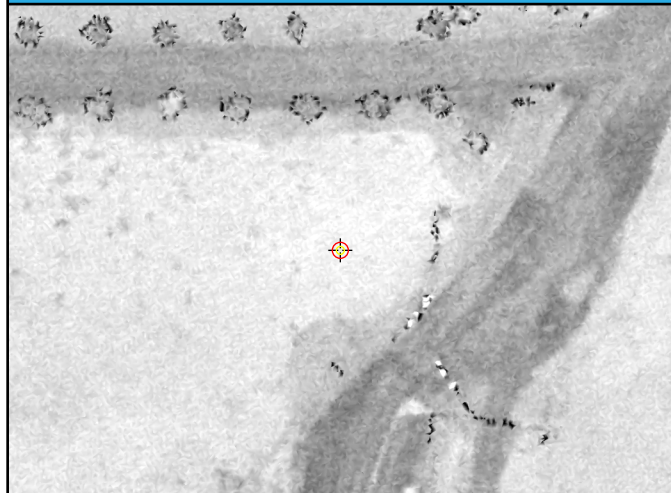
Cross Section - Northwest to Southeast



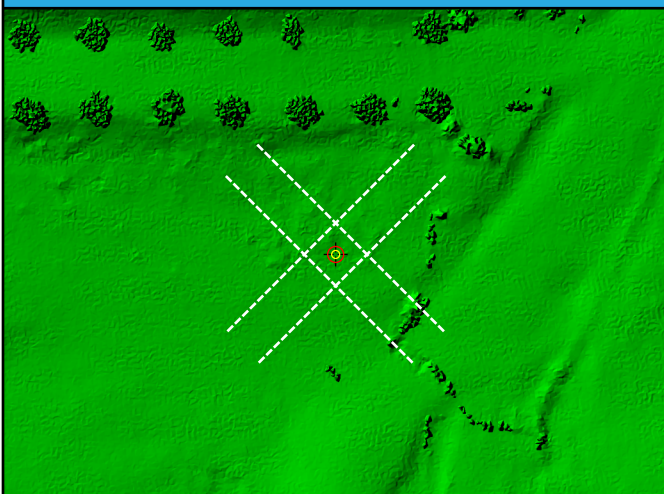
Cross Section - Northeast to Southwest



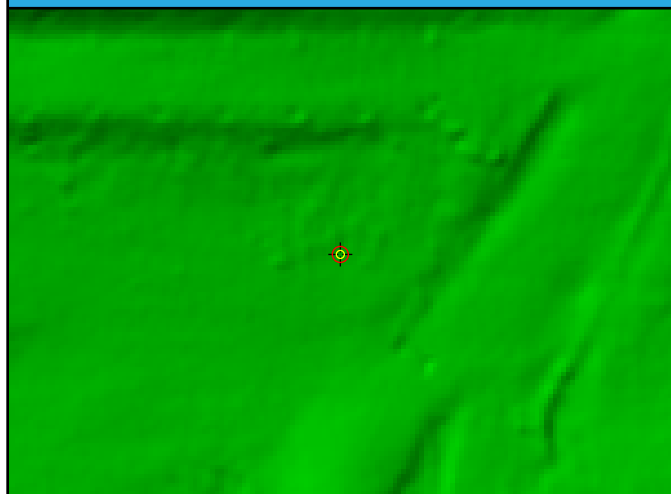
Intensity



LAS Points TIN



DEM

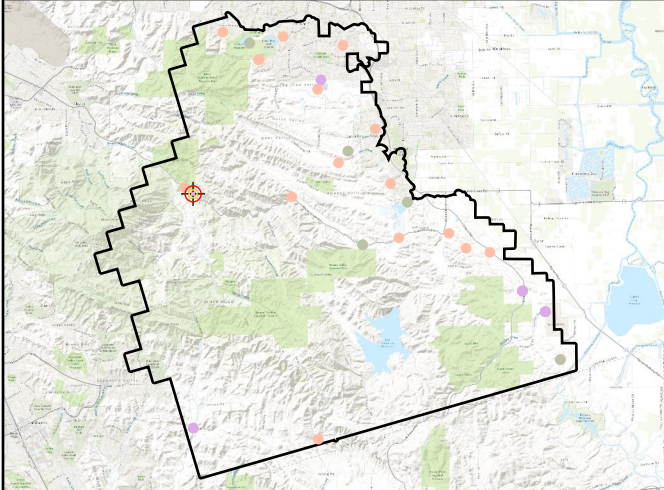


TG004

General	
Name	TG004
Type	VVA
Known Z	186.81 m
DEM Dz	1.13 cm

Ground (LAS Points)	
Dz	0.86 cm
Density	9.09 ppsm
Nearest	0.18 m
Slope	6.84°

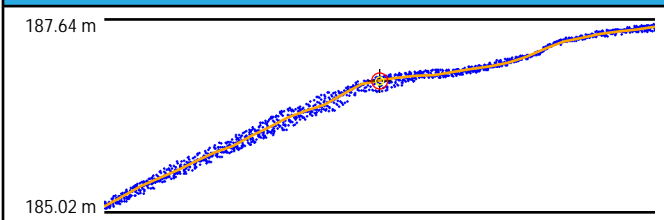
Project Context



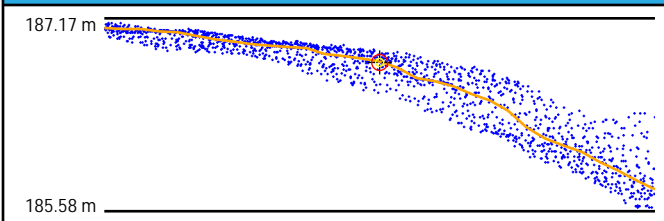
World Imagery



Cross Section - West to East



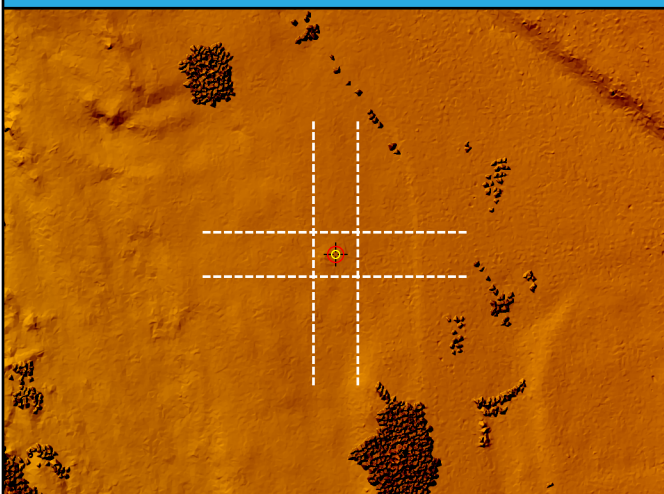
Cross Section - North to South



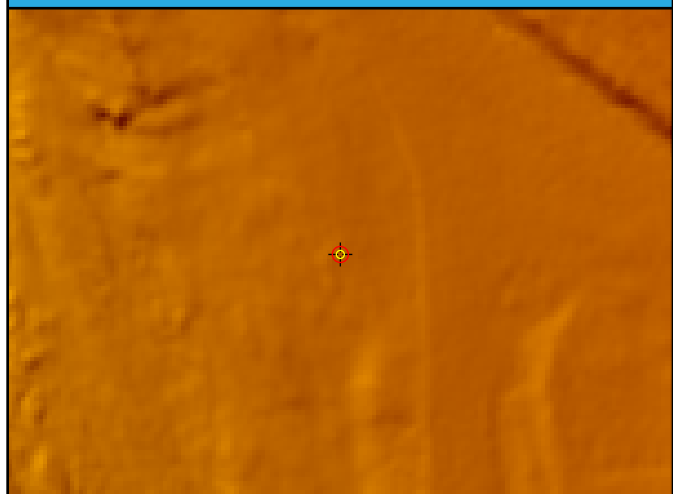
Intensity



LAS Points TIN



DEM

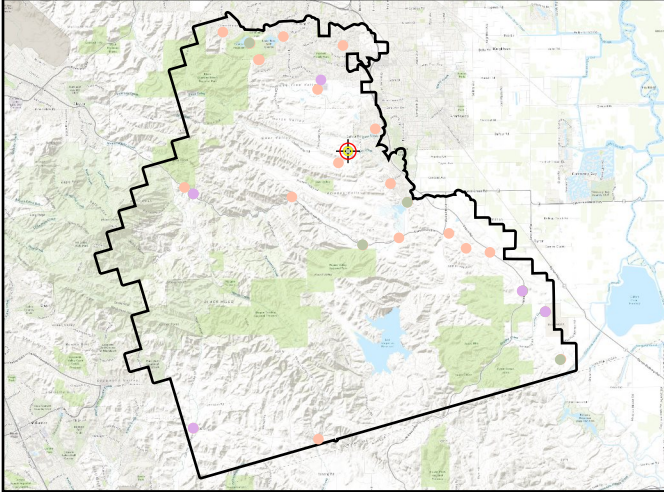


TG005

General	
Name	TG005
Type	VVA
Known Z	73.71 m
DEM Dz	0.84 cm

Ground (LAS Points)	
Dz	0.61 cm
Density	10.89 ppsm
Nearest	0.10 m
Slope	3.04°

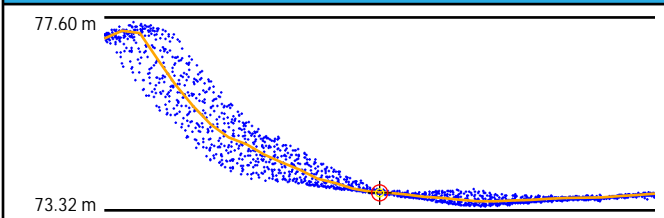
Project Context



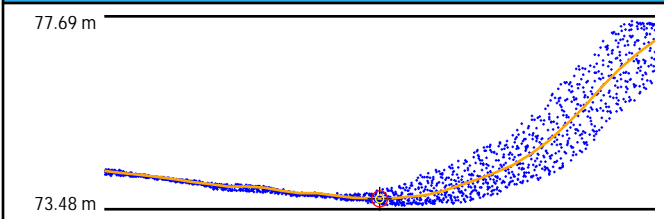
World Imagery



Cross Section - Southwest to Northeast



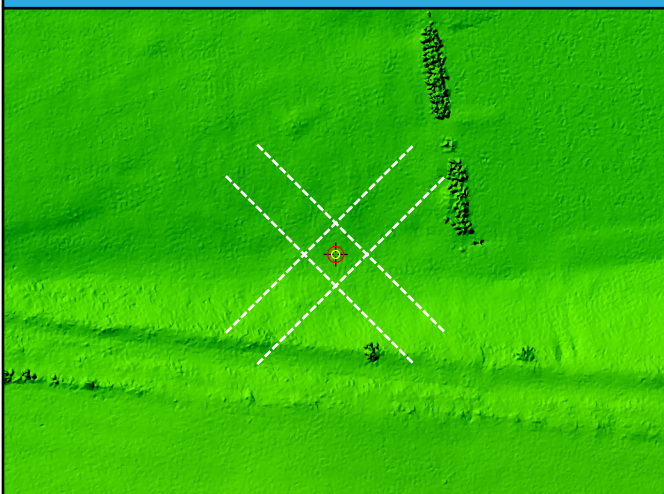
Cross Section - Northwest to Southeast



Intensity



LAS Points TIN



DEM

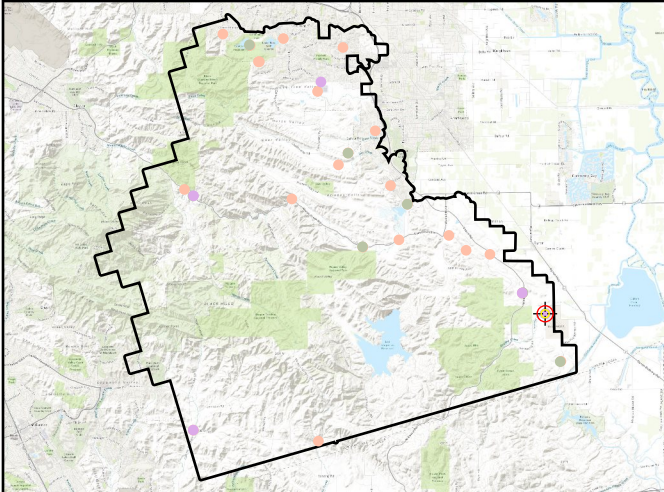


TG006

General	
Name	TG006
Type	VVA
Known Z	20.44 m
DEM Dz	8.14 cm

Ground (LAS Points)	
Dz	8.13 cm
Density	8.38 ppsm
Nearest	0.24 m
Slope	2.29°

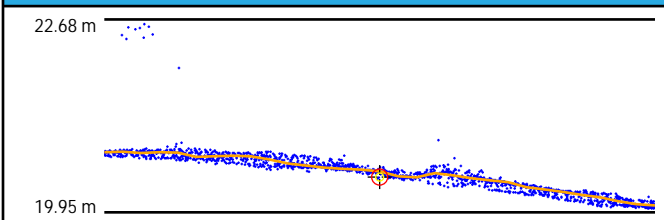
Project Context



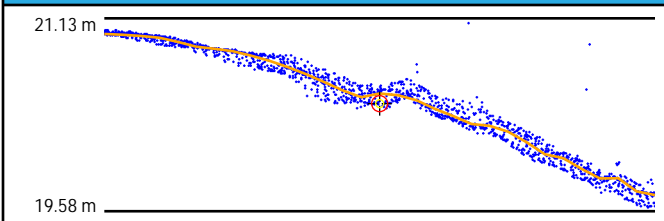
World Imagery



Cross Section - North to South



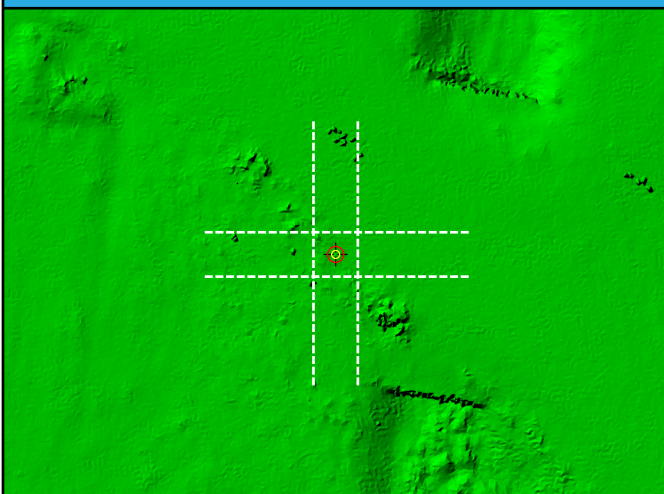
Cross Section - East to West



Intensity



LAS Points TIN



DEM

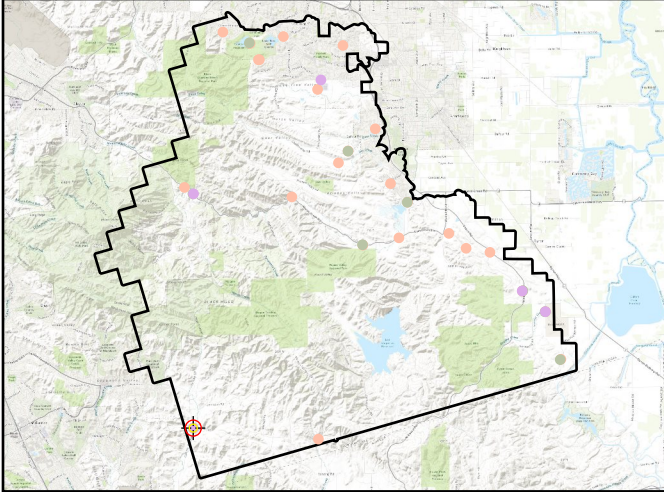


CA001

General	
Name	CA001
Type	CAL
Known Z	188.97 m
DEM Dz	-5.10 cm

Ground (LAS Points)	
Dz	-4.79 cm
Density	12.38 ppsm
Nearest	0.10 m
Slope	2.29°

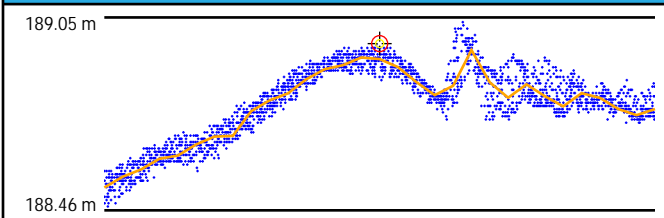
Project Context



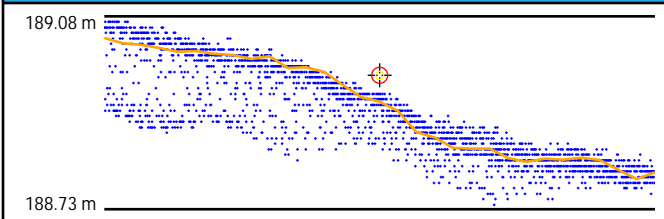
World Imagery



Cross Section - West to East



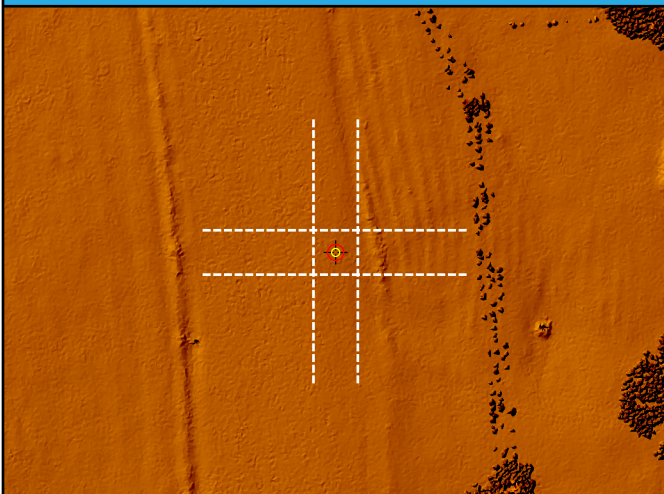
Cross Section - North to South



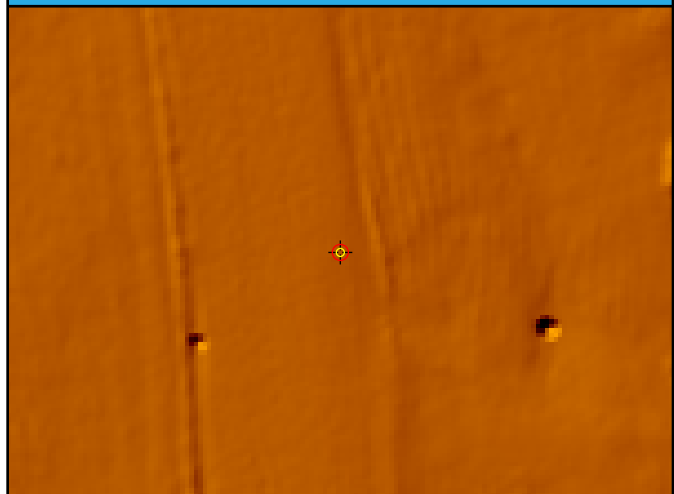
Intensity



LAS Points TIN



DEM

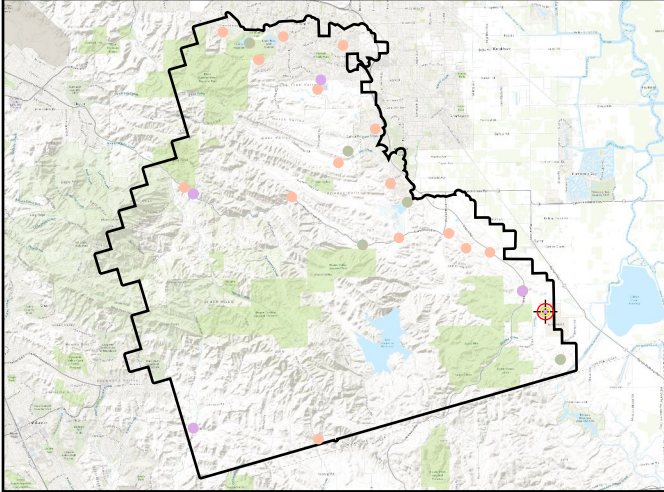


CA002

General	
Name	CA002
Type	CAL
Known Z	20.94 m
DEM Dz	5.30 cm

Ground (LAS Points)	
Dz	5.37 cm
Density	9.76 ppsm
Nearest	0.20 m
Slope	1.43°

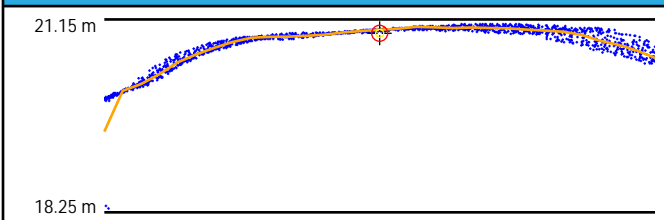
Project Context



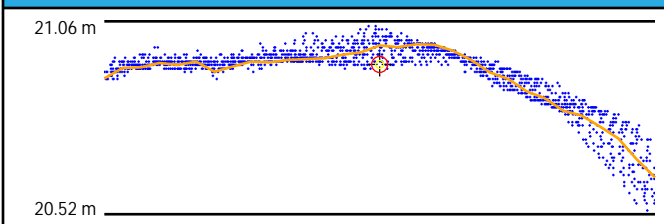
World Imagery



Cross Section - North to South



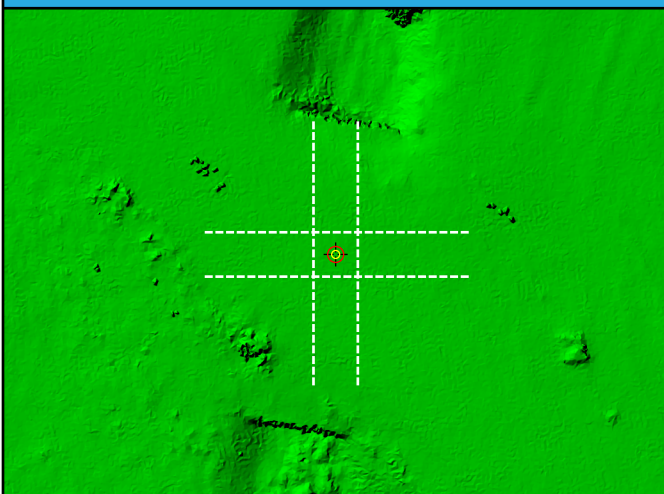
Cross Section - East to West



Intensity



LAS Points TIN



DEM

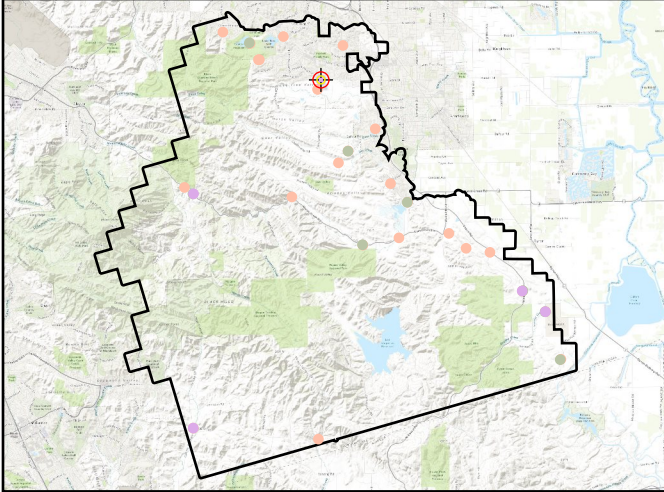


CA003

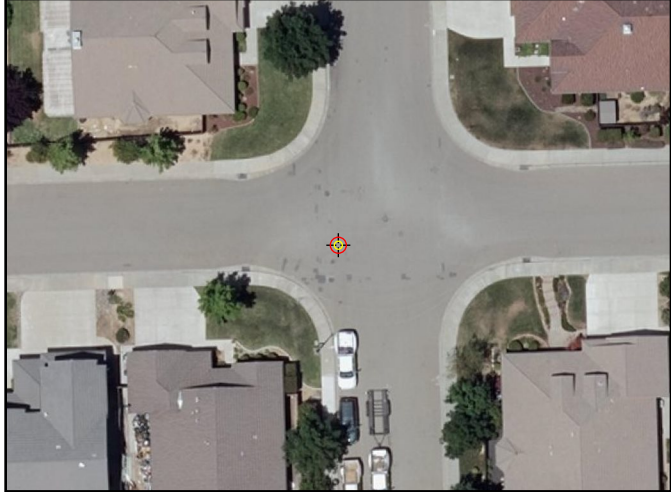
General	
Name	CA003
Type	CAL
Known Z	69.36 m
DEM Dz	0.21 cm

Ground (LAS Points)	
Dz	-0.11 cm
Density	13.02 ppsm
Nearest	0.26 m
Slope	1.15°

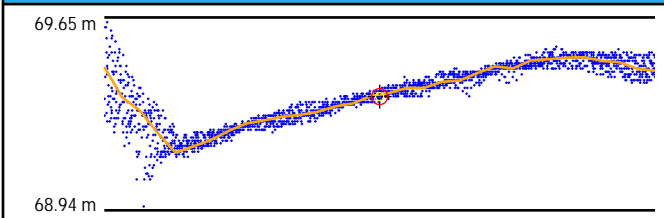
Project Context



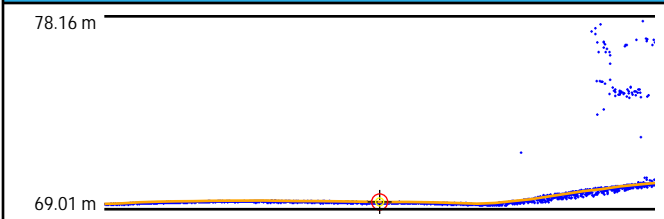
World Imagery



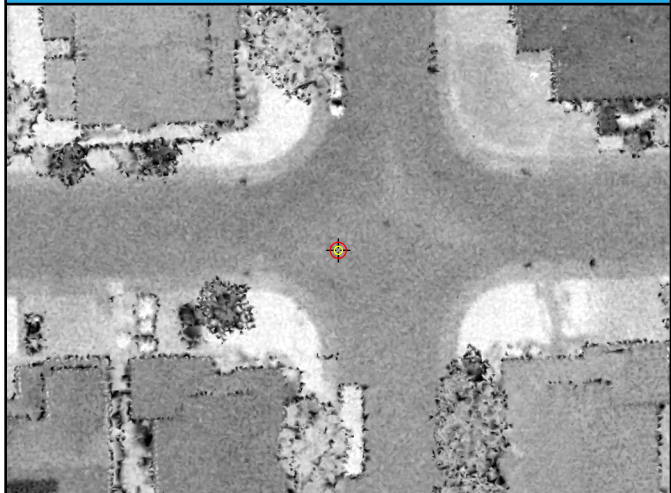
Cross Section - Northwest to Southeast



Cross Section - Northeast to Southwest



Intensity



LAS Points TIN



DEM

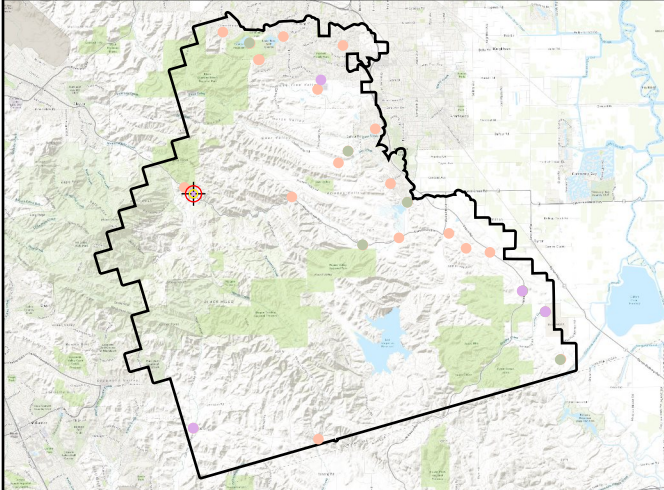


CA004

General	
Name	CA004
Type	CAL
Known Z	188.32 m
DEM Dz	-2.14 cm

Ground (LAS Points)	
Dz	-2.04 cm
Density	11.07 ppsm
Nearest	0.06 m
Slope	4.86°

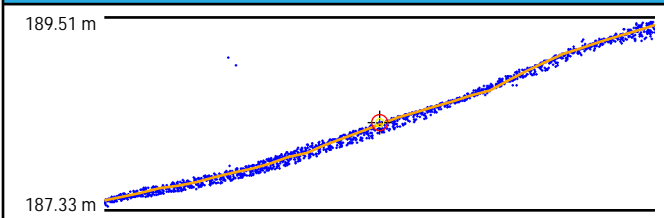
Project Context



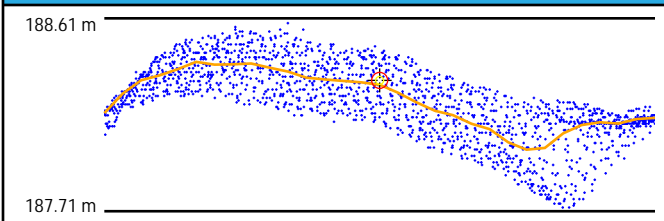
World Imagery



Cross Section - West to East



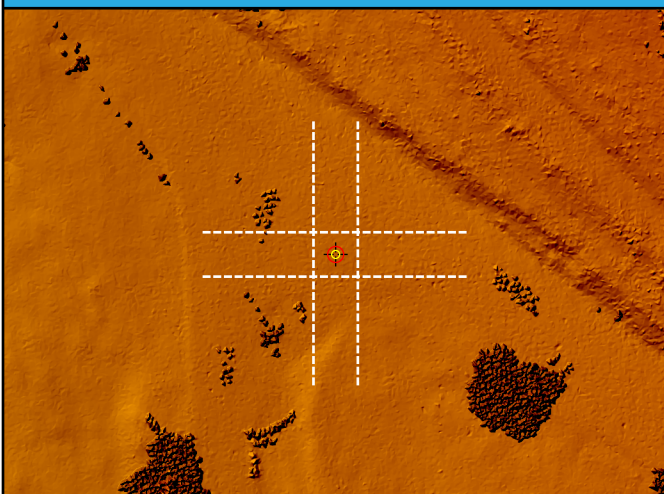
Cross Section - North to South



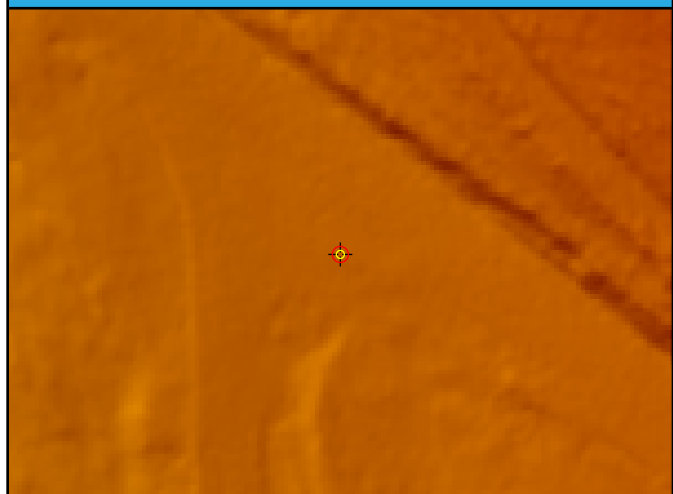
Intensity



LAS Points TIN



DEM

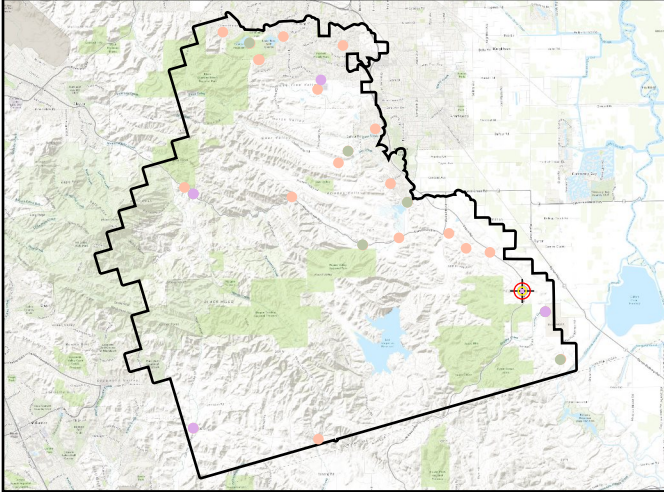


CA005

General	
Name	CA005
Type	CAL
Known Z	35.18 m
DEM Dz	1.58 cm

Ground (LAS Points)	
Dz	1.56 cm
Density	10.04 ppsm
Nearest	0.07 m
Slope	3.72°

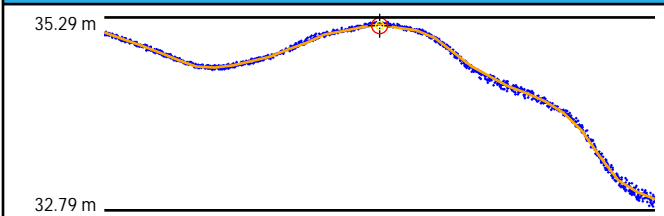
Project Context



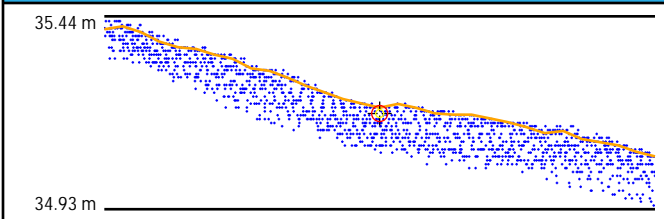
World Imagery



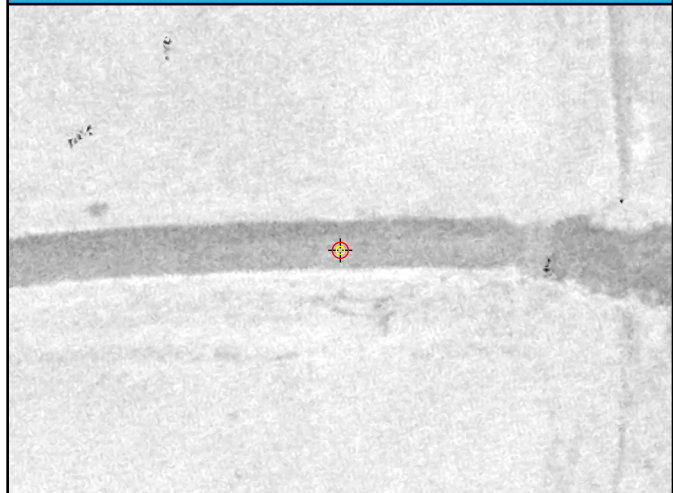
Cross Section - North to South



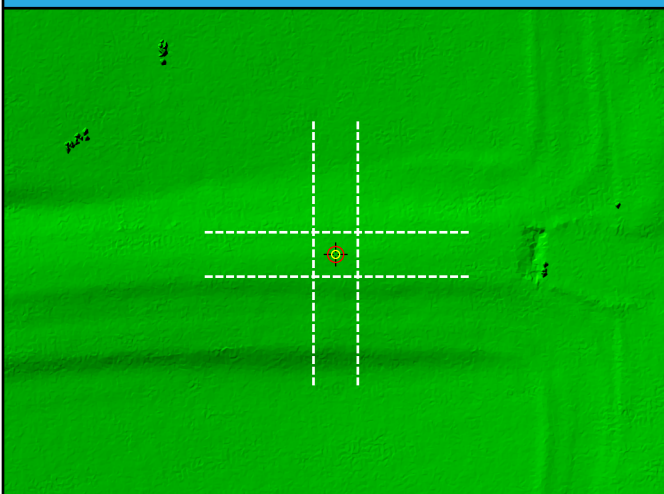
Cross Section - East to West



Intensity



LAS Points TIN



DEM

