

# Classified Point Cloud

## Deliverable 1 Summary

✓ General		
Folder:	F:\FEMA_STARR_II_San_Diego_LiDAR\Final\Classified_Point_Cloud_Data	
Total # of Files:	2,045	(All Valid)
Total File Size:	846.7 GB	(909,145,922,533 bytes)

✓ Tile Sizes		
Median Tile Size:	5,000' x 5,000'	
Minimum Tile Size:	17' x 43'	
Maximum Tile Size:	5,000' x 5,000'	
X Range:	6249730.66' to 6550564.07'	
Y Range:	1781819.57' to 2101889.52'	
Elevation Range:	-681.81' to 9035.10'	

✓ LAS Version And Point Record Formats		
v1.4, Point Record Format 6		2,045 of 2,045 Tiles

✓ Spatial Reference System		
Horizontal Projection	NAD83(2011) / California zone 6 (ftUS)	2,045 of 2,045 Tiles
Horizontal Datum	NAD83 (National Spatial Reference System 2011)	2,045 of 2,045 Tiles
Horizontal Units	US survey foot	2,045 of 2,045 Tiles
Vertical Datum	NAVD88 height (ftUS)	2,045 of 2,045 Tiles
Vertical Units	US survey foot	2,045 of 2,045 Tiles
Storage Method	WKT	2,045 of 2,045 Tiles

✓ GPS Time Type		
Adjusted		2,045 of 2,045 Tiles

✓ File Source ID Equals 0		
Yes		2,045 of 2,045 Tiles

✓ VLR/EVLR Reserved Equals 0		
Yes		2,809 of 2,809 Records

✓ Unnecessary Bytes At End Of File		
No		2,045 of 2,045 Tiles

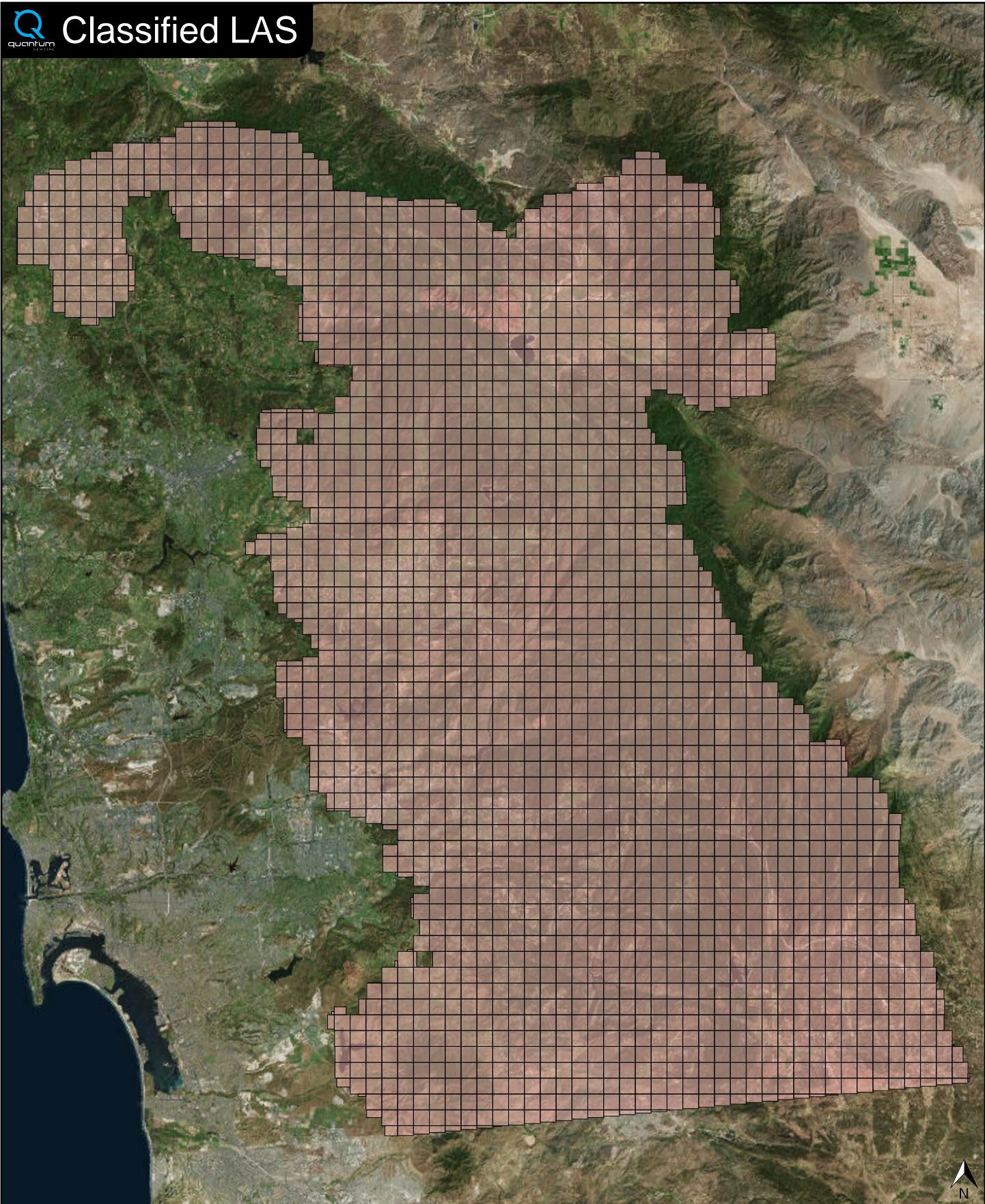
✓ Legacy Point Count Check		
Zero		2,045 of 2,045 Tiles

✓ System Identifier		
Quantum Spatial		2,045 of 2,045 Tiles

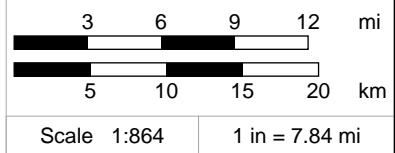
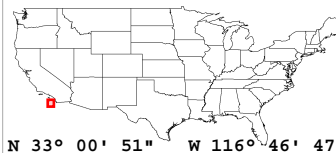
✓ Generating Software		
LiDAR Suite		2,045 of 2,045 Tiles



# Classified LAS



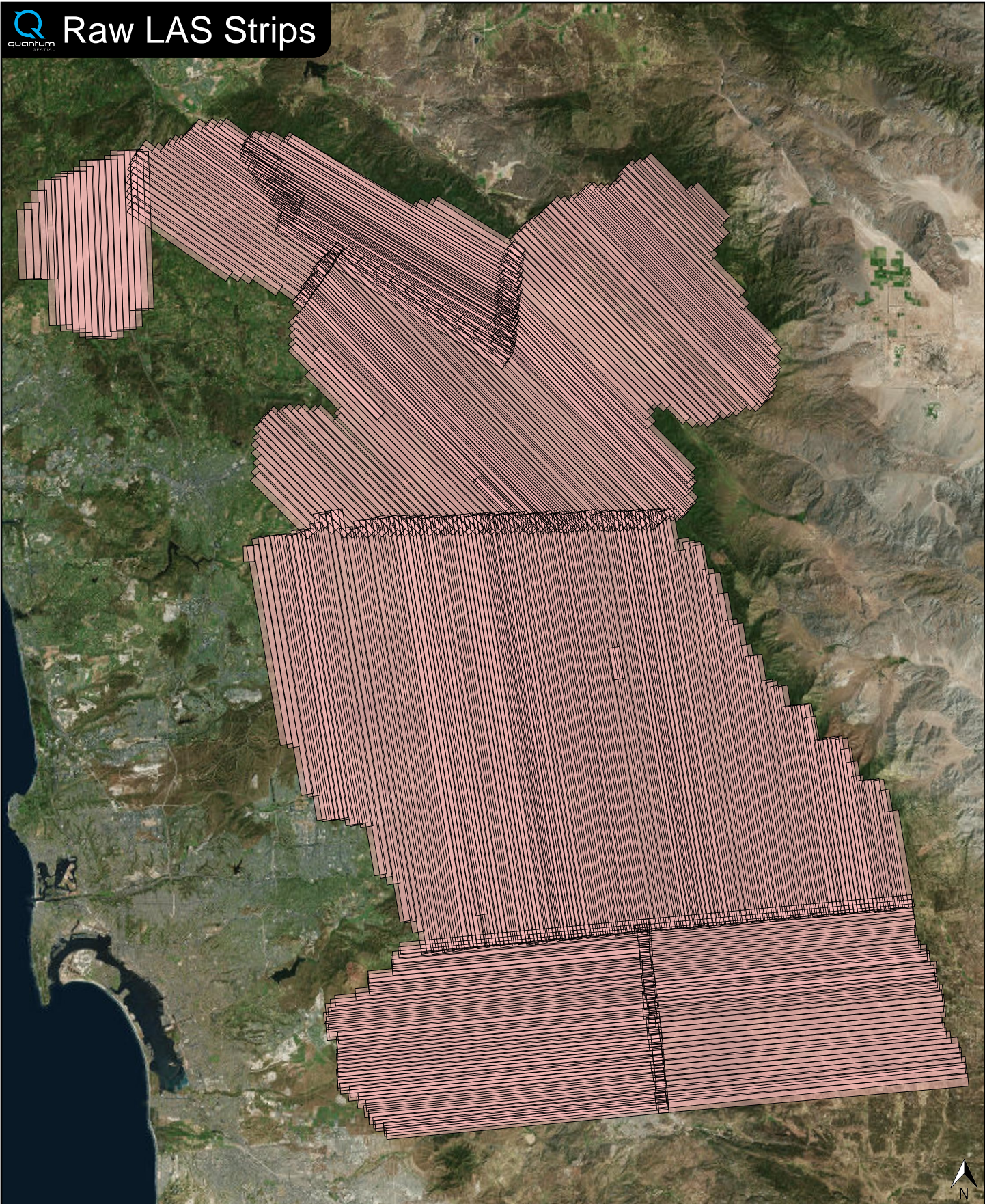
Classified LAS Tiles (2,045)



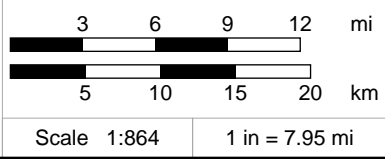
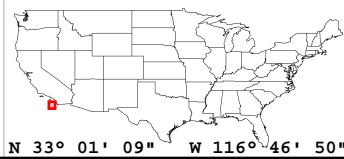
# Raw LAS Flight Line Strips

## Deliverable 2 Summary

<b>✓ General</b>		
Folder:	F:\FEMA_STARR_II_San_Diego_LiDAR\Final\Unclassified_Flightline_Swath_LAS	
Total # of Files:	403	(All Valid)
Total File Size:	899.6 GB	(965,906,039,213 bytes)
<b>✓ Raw LAS Strips</b>		
Elevation Range:	-682' to 9035'	
<b>✓ LAS Version And Point Record Formats</b>		
v1.4, Point Record Format 6	403 of 403 Tiles	
<b>✓ Spatial Reference System</b>		
Horizontal Projection	NAD83(2011) / California zone 6 (ftUS)	403 of 403 Tiles
Horizontal Datum	NAD83 (National Spatial Reference System 2011)	403 of 403 Tiles
Horizontal Units	US survey foot	403 of 403 Tiles
Vertical Datum	NAVD88 height (ftUS)	403 of 403 Tiles
Vertical Units	US survey foot	403 of 403 Tiles
Storage Method	WKT	403 of 403 Tiles
<b>✓ GPS Time Type</b>		
Adjusted	403 of 403 Strips	
<b>✓ File Source IDs</b>		
Equals Zero:	None	
All Unique:	Yes	
FLs:	100 - 104, 106 - 109, 111 - 137, 139, 141 - 144, 147 - 150, 154 - 155, 200 - 205, 207 - 217, 220 - 227, 230 - 232, 234 - 243, 300 - 304, 306 - 321, 323 - 337, 339 - 353, 357 - 360, 362 - 369, 371 - 372, 374 - 442, 500 - 565, 567 - 608, 700 - 718, 721 - 726, 800 - 818, 900 - 901, 903 - 908, 910 - 933	
<b>✓ VLR/EVLR Reserved Equals 0</b>		
Yes	403 of 403 Records	
<b>✓ Unnecessary Bytes At End Of File</b>		
No	403 of 403 Strips	
<b>✓ Legacy Point Count Check</b>		
Zero	403 of 403 Strips	
<b>✓ System Identifier</b>		
Quantum Spatial	403 of 403 Strips	
<b>✓ Generating Software</b>		
LiDAR Suite	403 of 403 Strips	



FL Strips (403)

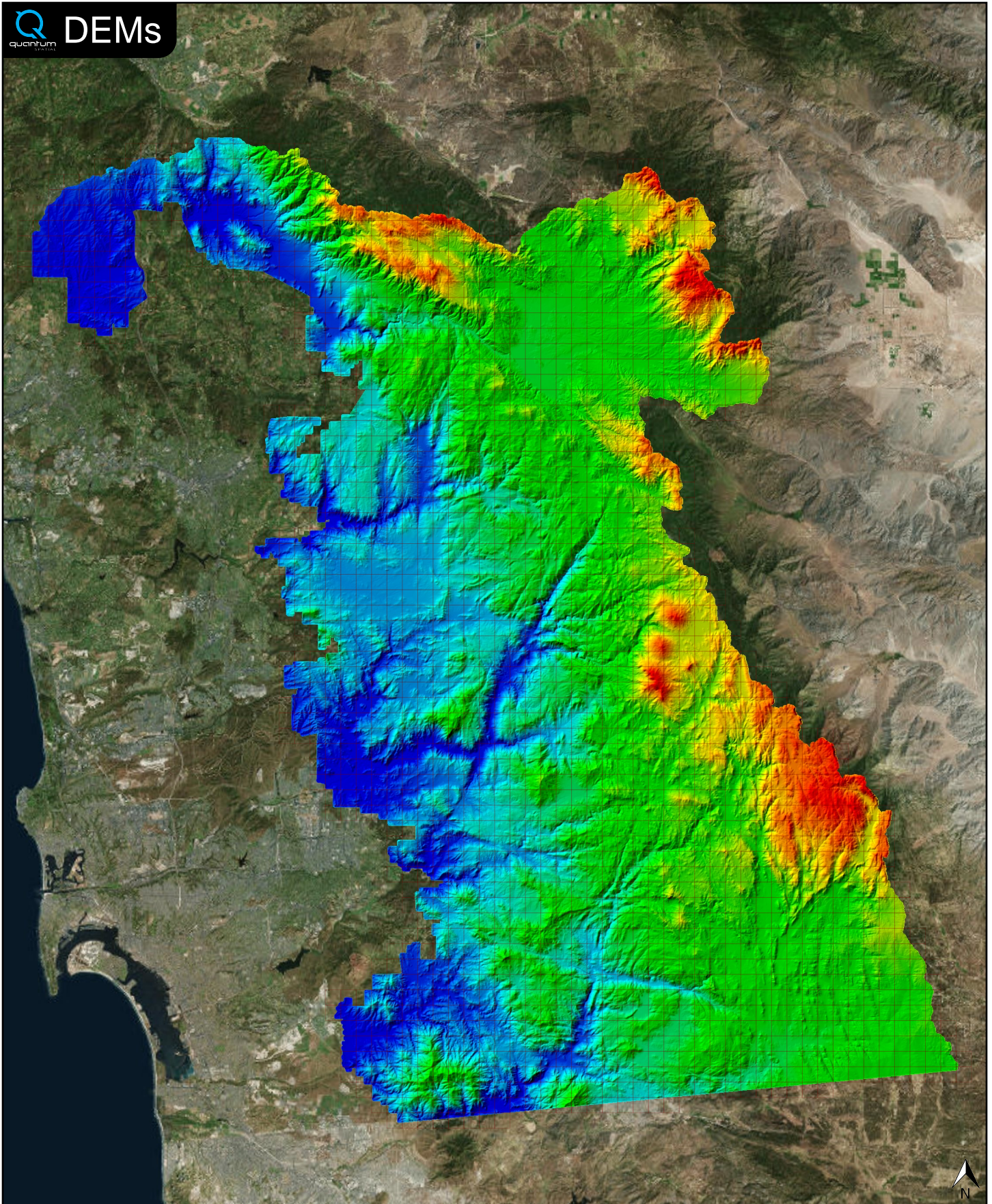


✓ General		
Folder:	F:\FEMA_STARR_II_San_Diego_LiDAR\Final\Bare_Earth_DEM	
Total # of Files:	2,045	(All Valid)
Total File Size:	32.0 GB	(34,358,335,448 bytes)

✓ Tile Sizes		
Median Tile Size:	5,000' x 5,000'	
Minimum Tile Size:	5,000' x 5,000'	
Maximum Tile Size:	5,000' x 5,000'	
X Range:	6245000.00' to 6555000.00'	
Y Range:	1780000.00' to 2105000.00'	
Elevation Range:	133.49' to 6518.71'	

✓ Spatial Reference System		
Horizontal Projection	NAD_1983_2011_StatePlane_California_VI_FIPS_0406_Ft_US	2,045 of 2,045 Tiles
Horizontal Datum	D_NAD_1983_2011	2,045 of 2,045 Tiles
Horizontal Units	Foot_US	2,045 of 2,045 Tiles
Vertical Datum	NAVD88 height (ftUS)	2,045 of 2,045 Tiles
Vertical Units	Foot_US	2,045 of 2,045 Tiles

✓ Raster		
File Type:	IMG	2,045 of 2,045
Bands:	1	2,045 of 2,045
Grid Size (pixels):	2000 x 2000	2,045 of 2,045
Pixel Resolution:	2.50000000' x 2.50000000'	2,045 of 2,045
Pixel Type:	32-bit Floating Point	2,045 of 2,045
Compression:	None	2,045 of 2,045
No Data Value:	-32767	2,045 of 2,045



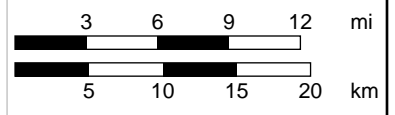
136.23 sf

3320.42 sf

6504.61 sf



N 33° 00' 58" W 116° 46' 50"



Scale 1:864

1 in = 8.07 mi

