

# Classified Point Cloud

## Deliverable 1 Summary

✓ General		
Folder:	G:\196602_FullDelivery\196600\point_cloud\tilecls	
Total # of Files:	1,804	(All Valid)
Total File Size:	1.2 TB	(1,296,069,115,027 bytes)

✓ Tile Sizes	
Median Tile Size:	2,500' x 2,500'
Minimum Tile Size:	6' x 5'
Maximum Tile Size:	2,500' x 2,500'
X Range:	6028480.03' to 6229439.91'
Y Range:	1770082.30' to 1912237.57'
Elevation Range:	-384.71' to 6863.69'

✓ LAS Version And Point Record Formats	
v1.4, Point Record Format 6	1,804 of 1,804 Tiles

✓ Spatial Reference System		
Horizontal Projection	NAD83(2011) / California zone 3 (ftUS)	1,804 of 1,804 Tiles
Horizontal Datum	NAD83 (National Spatial Reference System 2011)	1,804 of 1,804 Tiles
Horizontal Units	US survey foot	1,804 of 1,804 Tiles
Vertical Datum	NAVD88 height (ftUS) - Geoid12B (ftUS)	1,804 of 1,804 Tiles
Vertical Units	US survey foot	1,804 of 1,804 Tiles
Vertical USGS-Compliant	Yes	1,804 of 1,804 Tiles
Geoid	Geoid12B	1,804 of 1,804 Tiles
Storage Method	WKT	1,804 of 1,804 Tiles
Matches OGC Template	Yes	1,804 of 1,804 Tiles

✓ GPS Time Type	
Adjusted	1,804 of 1,804 Tiles

✓ File Source ID Equals 0	
Yes	1,804 of 1,804 Tiles

✓ VLR/EVLR Reserved Equals 0	
Yes	10,824 of 10,824 Records

✓ Unnecessary Bytes At End Of File	
No	1,804 of 1,804 Tiles

✓ Legacy Point Count Check	
Zero	1,804 of 1,804 Tiles

✓ System Identifier	
MERGE	1,804 of 1,804 Tiles

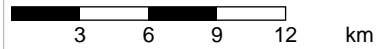
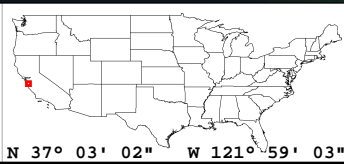
✓ Generating Software	
QSI LiDAR Suite	1,804 of 1,804 Tiles



# Classified LAS



Classified LAS Tiles (1,804)



Scale 1:864

1 in = 5.23 mi

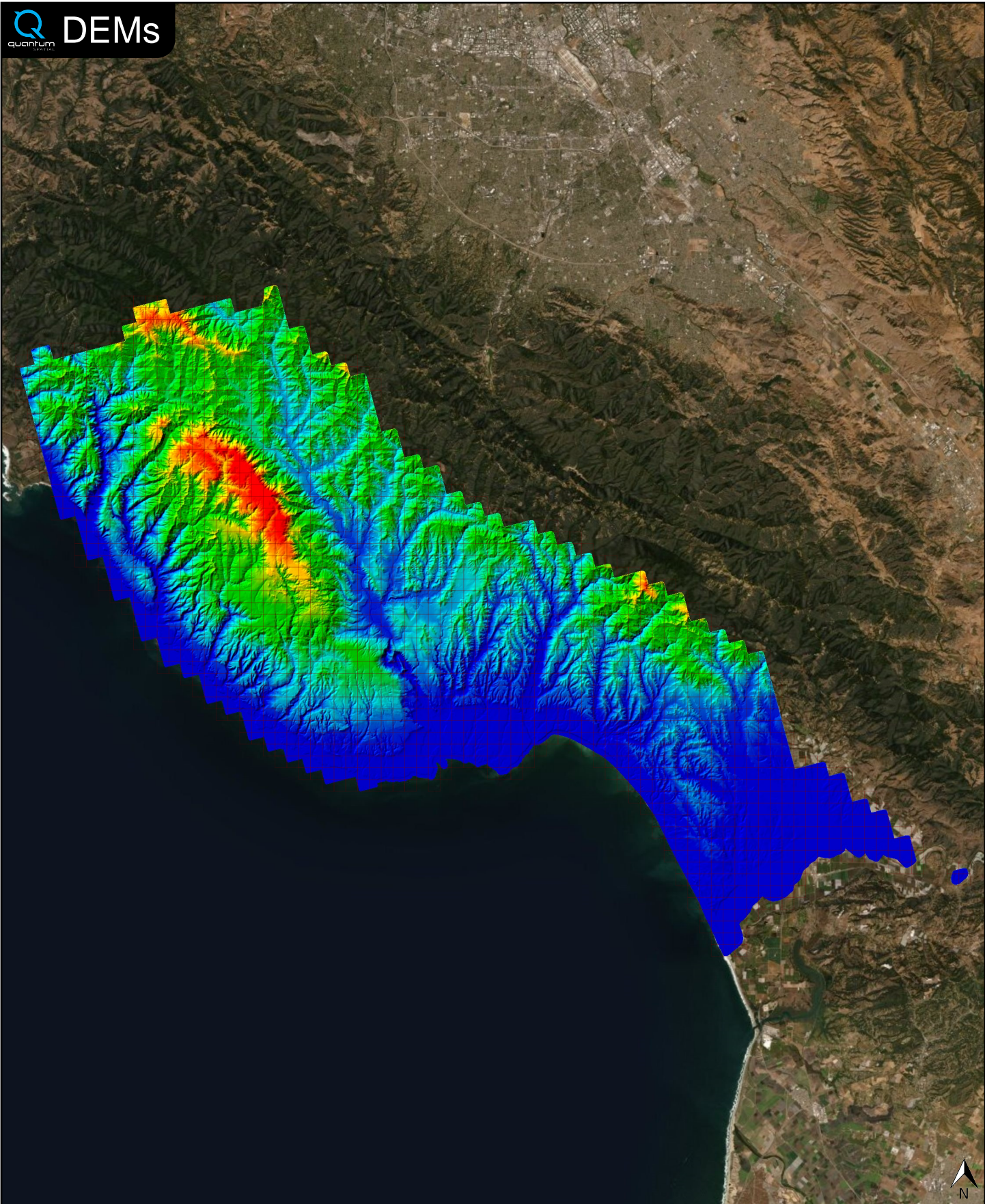
✓ General		
Folder:	G:\196602_FullDelivery\196600\bare_earth\be_rasters	
Total # of Files:	1,804	(All Valid)
Total File Size:	11.0 GB	(11,831,754,088 bytes)

✓ Tile Sizes	
Median Tile Size:	2,500' x 2,500'
Minimum Tile Size:	2,500' x 2,500'
Maximum Tile Size:	2,500' x 2,500'
X Range:	6027500.00' to 6230000.00'
Y Range:	1770000.00' to 1912500.00'
Header Elevation Range:	UNKNOWN

✓ Spatial Reference System		
Horizontal Projection	NAD83(2011) / California zone 3 (ftUS)	1,804 of 1,804 Tiles
Horizontal Datum	NAD83 (National Spatial Reference System 2011)	1,804 of 1,804 Tiles
Horizontal Units	US survey foot	1,804 of 1,804 Tiles
Vertical Datum	NAVD88 height (ftUS) - Geoid12B (ftUS)	1,804 of 1,804 Tiles
Vertical Units	US survey foot	1,804 of 1,804 Tiles
Vertical USGS-Compliant	Yes	1,804 of 1,804 Tiles
Geoid	Geoid12B	1,804 of 1,804 Tiles
Matches OGC Template	Yes	1,804 of 1,804 Tiles

✓ Raster		
File Type:	TIF	1,804 of 1,804
Bands:	1	1,804 of 1,804
Grid Size (pixels):	1250 x 1250	1,804 of 1,804
Pixel Resolution:	2.00000000' x 2.00000000'	1,804 of 1,804
Pixel Type:	32-bit	1,804 of 1,804
Compression:	None	1,804 of 1,804
No Data Value:	-999999	1,804 of 1,804

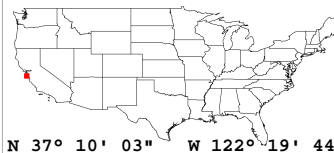




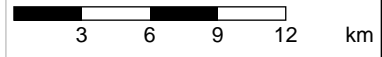
-1.20 sf

1324.54 sf

2650.27 sf



N 37° 10' 03" W 122° 19' 44"



Scale 1:864

1 in = 5.27 mi

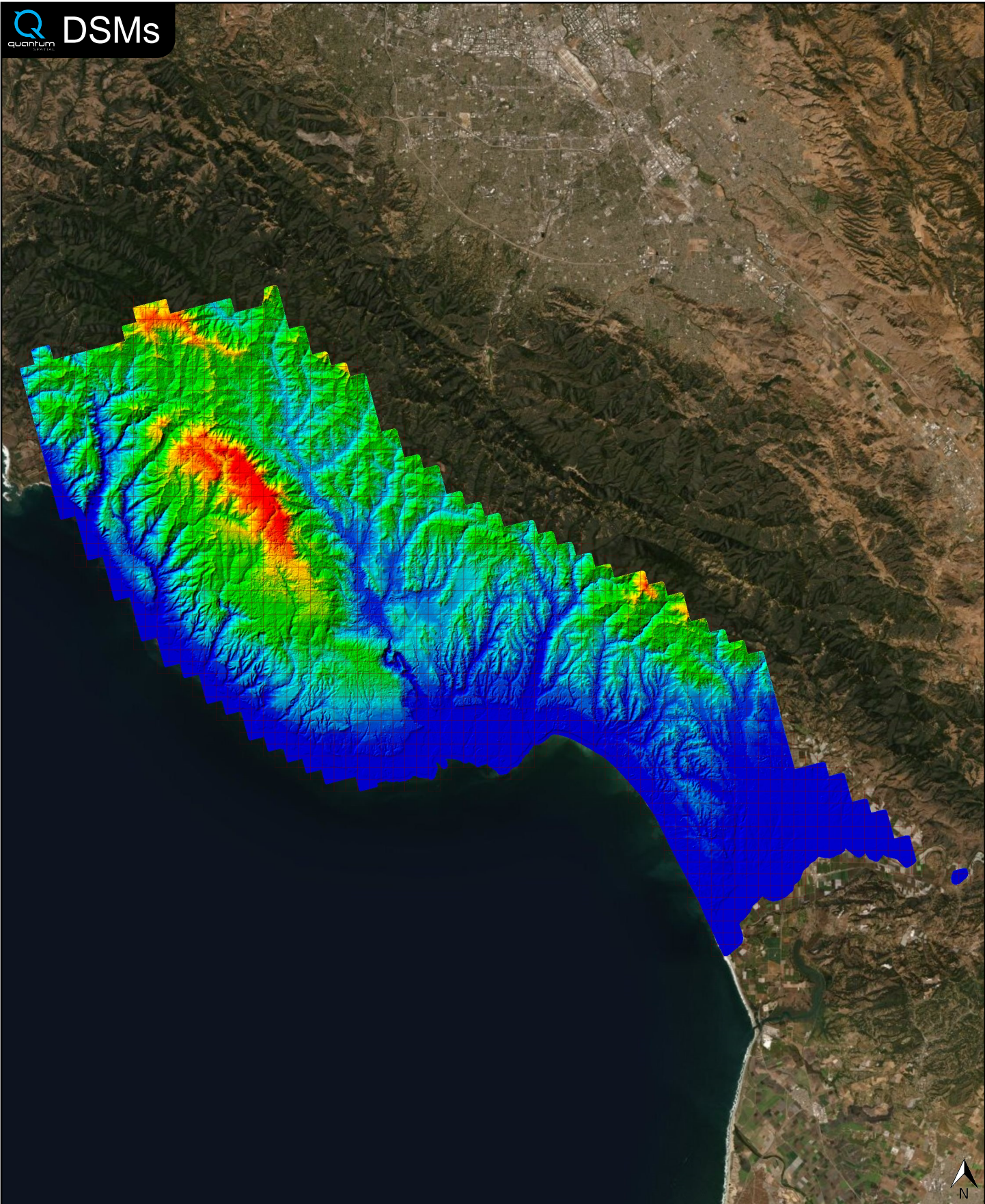
✓ General		
Folder:	G:\196602_FullDelivery\196600\other\DSM	
Total # of Files:	1,804	(All Valid)
Total File Size:	11.0 GB	(11,831,754,088 bytes)

✓ Tile Sizes	
Median Tile Size:	2,500' x 2,500'
Minimum Tile Size:	2,500' x 2,500'
Maximum Tile Size:	2,500' x 2,500'
X Range:	6027500.00' to 6230000.00'
Y Range:	1770000.00' to 1912500.00'
Header Elevation Range:	UNKNOWN

✓ Spatial Reference System		
Horizontal Projection	NAD83(2011) / California zone 3 (ftUS)	1,804 of 1,804 Tiles
Horizontal Datum	NAD83 (National Spatial Reference System 2011)	1,804 of 1,804 Tiles
Horizontal Units	US survey foot	1,804 of 1,804 Tiles
Vertical Datum	NAVD88 height (ftUS) - Geoid12B (ftUS)	1,804 of 1,804 Tiles
Vertical Units	US survey foot	1,804 of 1,804 Tiles
Vertical USGS-Compliant	Yes	1,804 of 1,804 Tiles
Geoid	Geoid12B	1,804 of 1,804 Tiles
Matches OGC Template	Yes	1,804 of 1,804 Tiles

✓ Raster		
File Type:	TIF	1,804 of 1,804
Bands:	1	1,804 of 1,804
Grid Size (pixels):	1250 x 1250	1,804 of 1,804
Pixel Resolution:	2.00000000' x 2.00000000'	1,804 of 1,804
Pixel Type:	32-bit	1,804 of 1,804
Compression:	None	1,804 of 1,804
No Data Value:	-999999	1,804 of 1,804

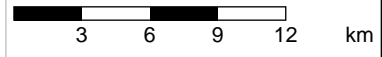
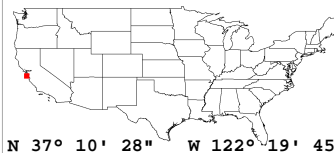




-1.53 sf

1370.08 sf

2741.69 sf



Scale 1:864

1 in = 5.27 mi

✓ General		
Folder:	G:\196602_FullDelivery\196600\other\Intensity_Images	
Total # of Files:	1,804	(All Valid)
Total File Size:	5.5 GB	(5,920,565,640 bytes)

✓ Tile Sizes		
Median Tile Size:	2,500' x 2,500'	
Minimum Tile Size:	2,500' x 2,500'	
Maximum Tile Size:	2,500' x 2,500'	
X Range:	6027500.00' to 6230000.00'	
Y Range:	1770000.00' to 1912500.00'	

✓ Spatial Reference System		
Horizontal Projection	NAD83(2011) / California zone 3 (ftUS)	1,804 of 1,804 Tiles
Horizontal Datum	NAD83 (National Spatial Reference System 2011)	1,804 of 1,804 Tiles
Horizontal Units	US survey foot	1,804 of 1,804 Tiles
Vertical Datum	NAVD88 height (ftUS) - Geoid12B (ftUS)	1,804 of 1,804 Tiles
Vertical Units	US survey foot	1,804 of 1,804 Tiles
Geoid	Geoid12B	1,804 of 1,804 Tiles

✓ Raster		
File Type:	TIF	1,804 of 1,804
Bands:	1	1,804 of 1,804
Grid Size (pixels):	1250 x 1250	1,804 of 1,804
Pixel Resolution:	2.00000000' x 2.00000000'	1,804 of 1,804
Pixel Type:	16-bit UNKNOWN (MINISBLACK)	1,804 of 1,804
Compression:	NONE	1,804 of 1,804
No Data Value:	0	1,804 of 1,804



