

Ground Control Point Survey Report

“El Nino Lidar Campaign”

USGS Contract #G16PC00020

Task Order #: T1

Prepared for:

United States Geological Survey (USGS)



Submitted By:

Dewberry

1000 N Ashley Drive, Suite 801

Tampa, FL 33602

Phone (813) 225-1325

TABLE OF CONTENTS

1.	Introduction	
1.1	Project Summary.....	3
1.2	Points of Contact.....	3
1.3	Project Area.....	4-11
2.	Project Details	
2.1	Survey Equipment	12
2.2	Survey Point Details.....	12
2.3	Network Design.....	12
2.4	Data Post-processing and Analysis.....	12-13
2.5	Adjustments.....	13
2.6	Published PBO Coordinates / Adjustment Constraints.....	14-17
2.7	Station Reoccupation Comparison	17-19
3.	Final Coordinates	20-23
4.	Ground Control Point Documentation Reports	24

1. INTRODUCTION

1.1 *Project Summary*

Dewberry is under contract to the United States Geological Survey to provide surveyed control points for the above referenced USGS Task Order. Towill, Inc. was subcontracted by Dewberry to complete this task. The control points will be used to validate the newly acquired lidar and generate both Non-vegetated Vertical Accuracy (NVA) and Vegetated Vertical Accuracy (VVA) reports.

The ground survey was conducted during periods in April and May, 2016. The exclusive source of control for this Lidar campaign and Control survey consisted of Continuously Operating Reference Stations operated by the Plate Boundary Observatory (PBO) branch of UNAVCO (<http://www.unavco.org/projects/major-projects/pbo/pbo.html>). The western coastal and coast mountain ranges of the United States include hundreds of the PBO CORS that are publically funded and, with coordination in advance, can be operated at a high collection rate (1-hertz) and the data obtained via simple File Transfer Protocol.

The horizontal datum for this project is the latest realization of NAD83, namely NAD83(2011), epoch of 2010.0. The datum is realized by the published horizontal coordinates of the PBO CORS. These values were obtained via the National Geodetic Survey (NGS - www.ngs.noaa.gov/CORS) and the Scripps Orbit and permanent Array Center (SOPAC - sopac.ucsd.edu/processing). See Table 1 for a list of the published coordinate values.

The vertical datum for this project is NAVD88. The datum is realized by the published ellipsoid heights of the PBO CORS and the absolute application of the geoid model GEOID12B. These heights were obtained via the National Geodetic Survey (NGS - www.ngs.noaa.gov/CORS) and the Scripps Orbit and permanent Array Center (SOPAC - sopac.ucsd.edu/processing). See Table 1 for a list of the published ellipsoid heights.

1.2 *Points of Contact*

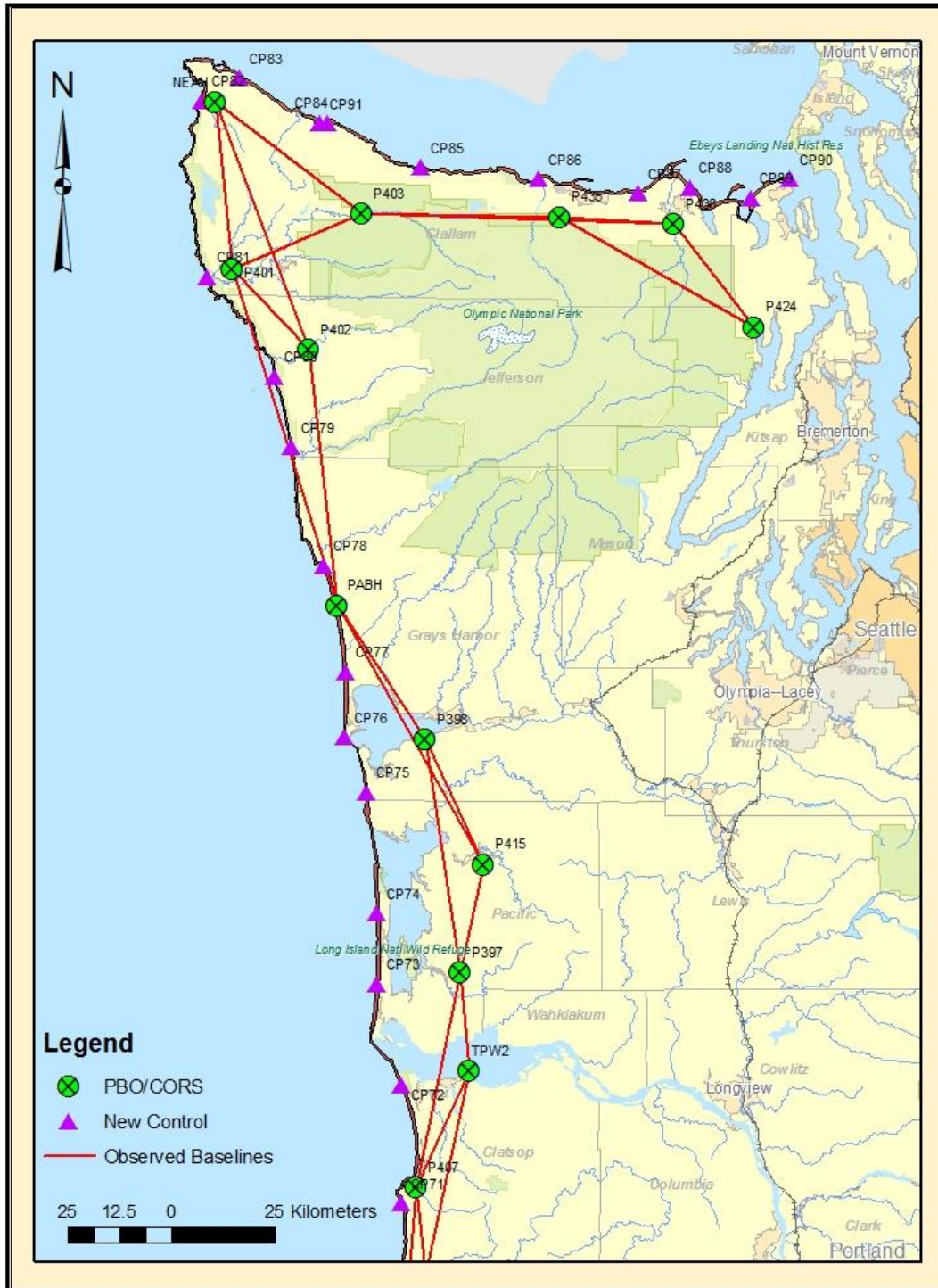
Questions regarding the technical aspects of this report should be addressed to:

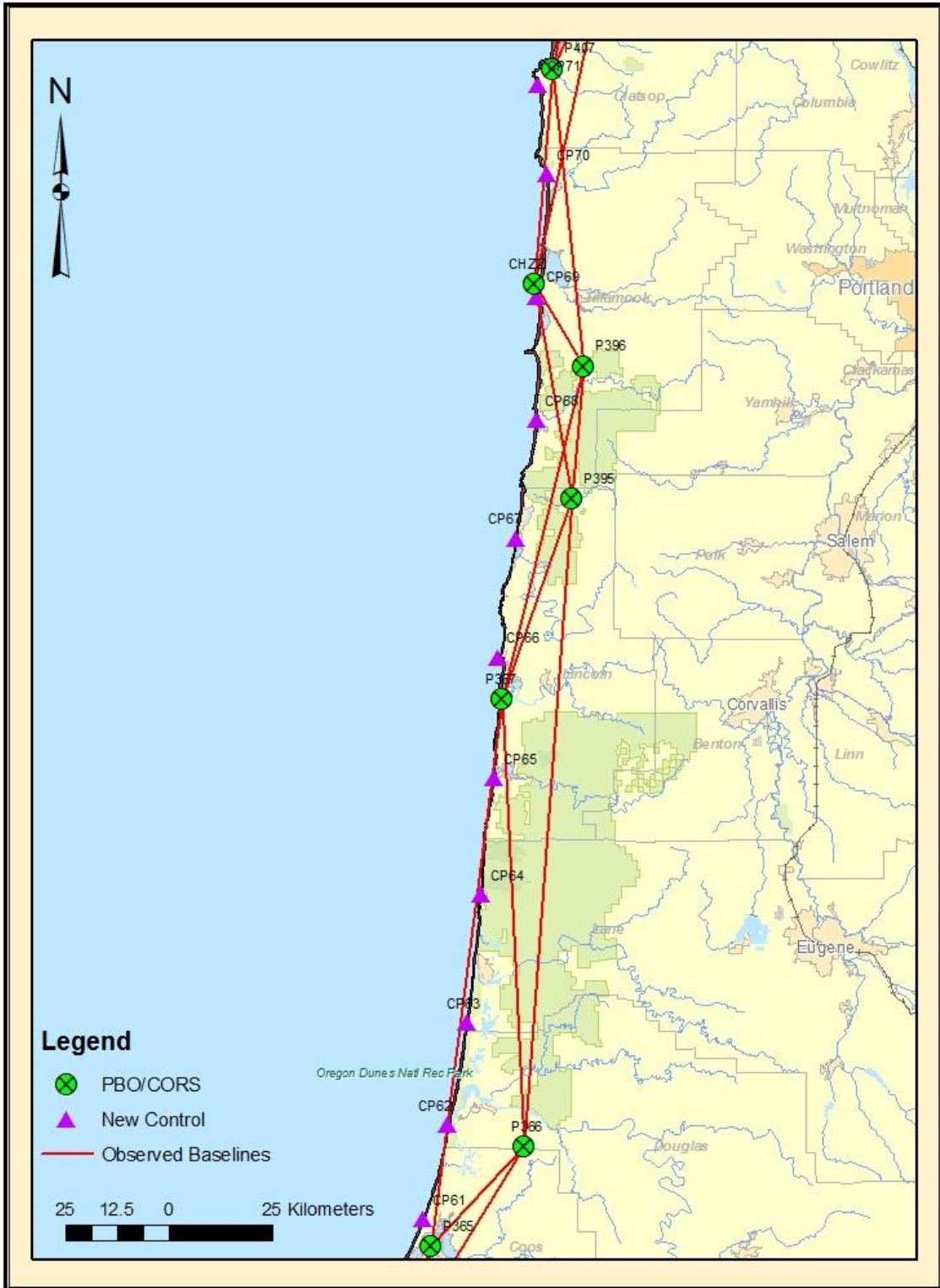
Towill, Inc.

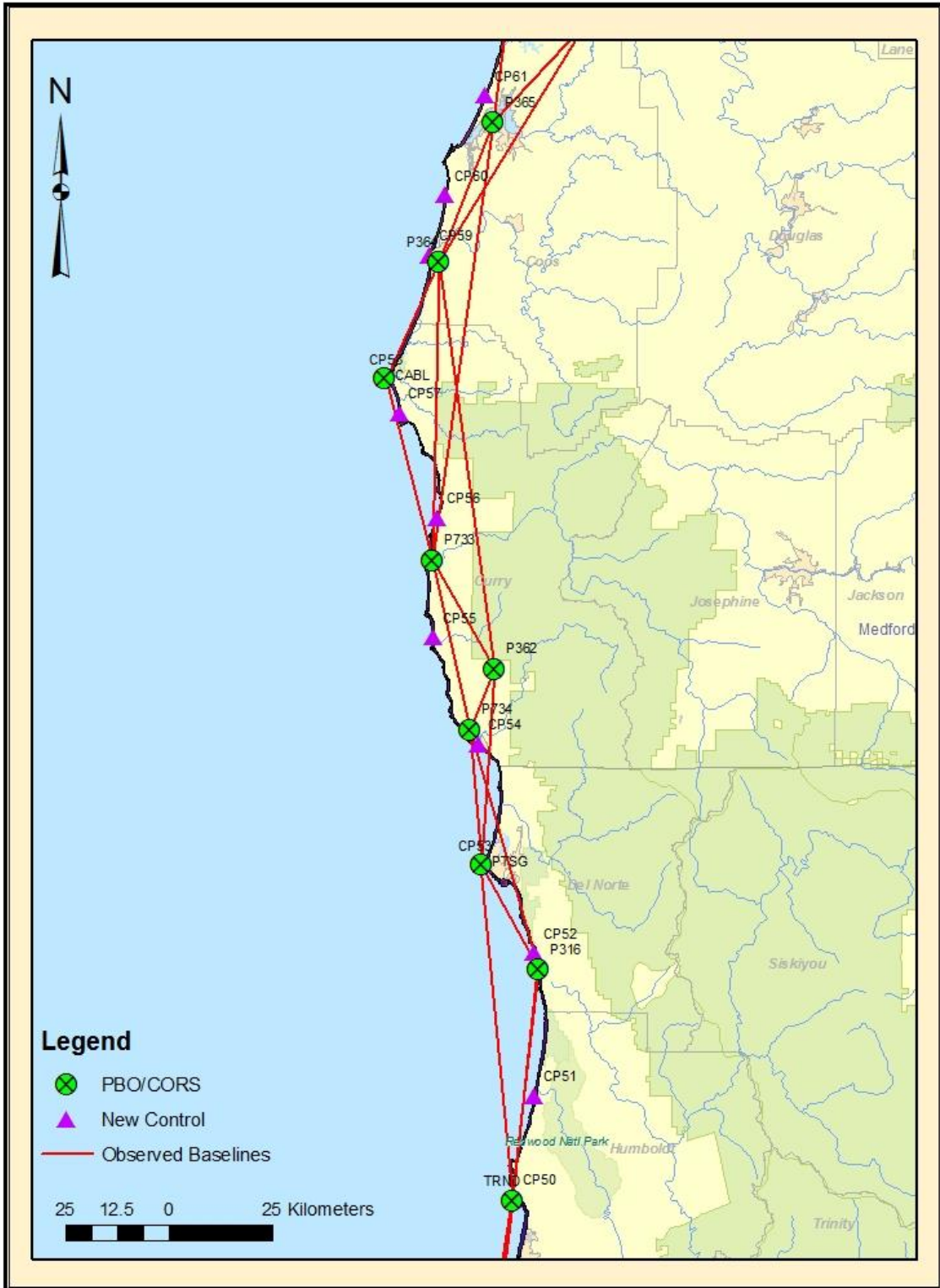
Keith Kirkby, PE
Survey Engineer
7222 Commerce Center Dr.
Suite 230
Colorado Springs, CO 80924
(719) 243-5990

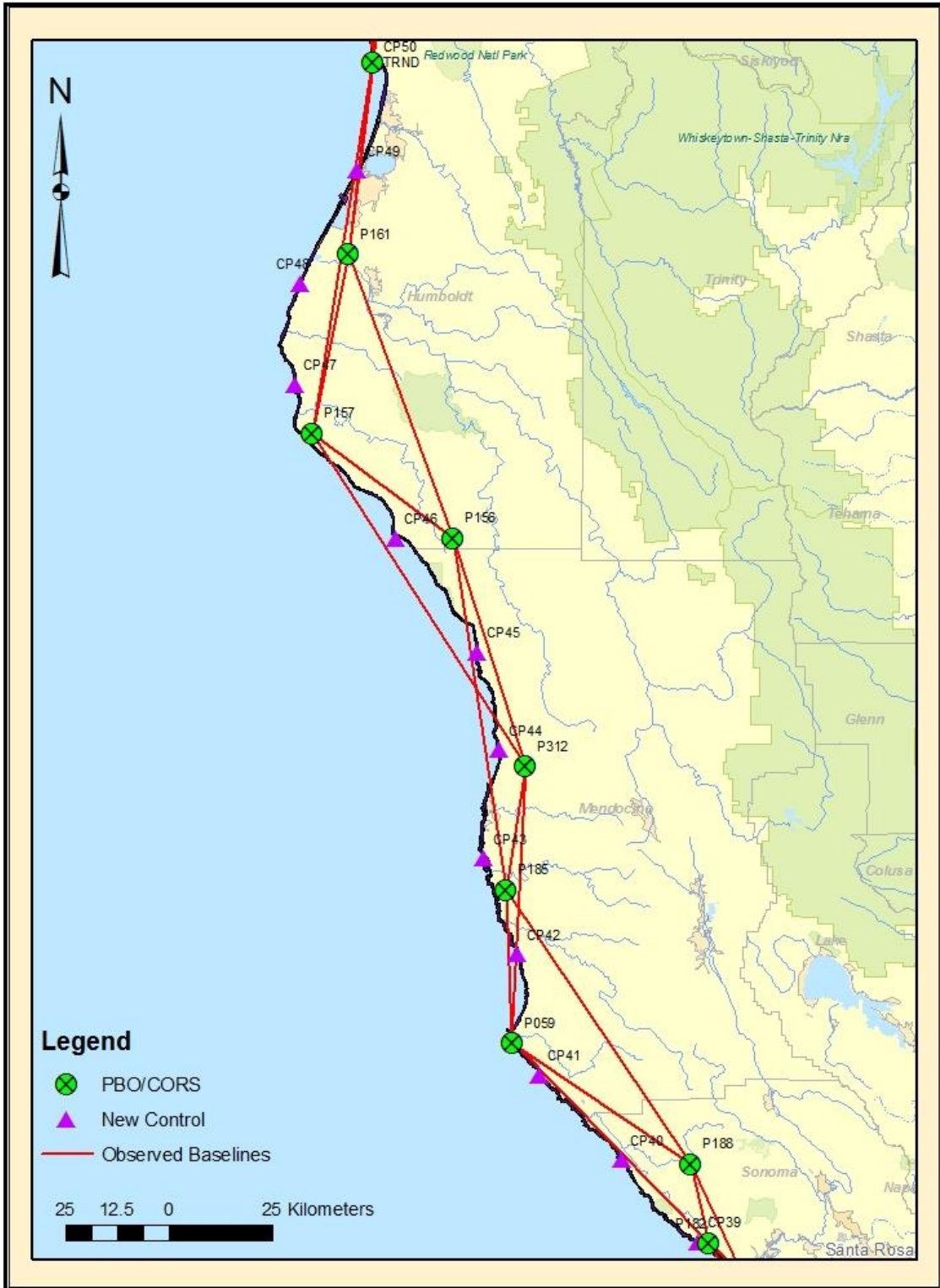
1.3 Project Area

The project boundary falls along an approximately 500 meter wide corridor on the coastline between Tijuana, Mexico and Port Townsend, WA as depicted below:





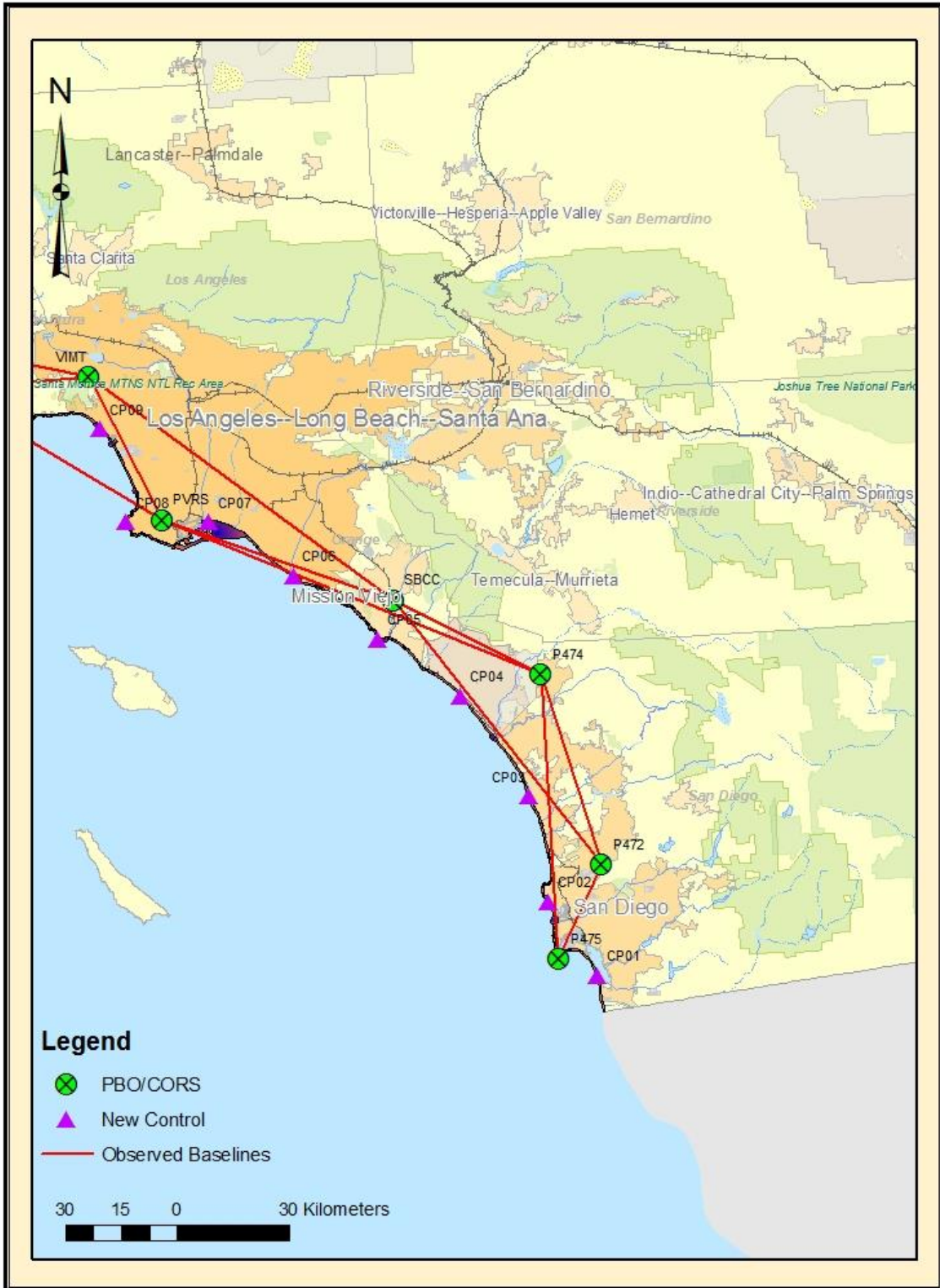












PROJECT DETAILS

2.1 Survey Equipment

All GPS observations were accomplished using Trimble Navigation R7 dual frequency GPS receivers and accompanying Trimble Zephyr Geodetic antennae. Instrument heights were measured twice in units of feet and meters and the values reduced and compared in the field prior to leaving each station.

Control point observation data were logged for a minimum of 45 minutes and as much as 60 minutes depending on proximity to operating PBO/CORS.

2.2 Survey Point Detail

Ninety-two control points were established along the coastline. The control points were marked with either 12" spikes or PK nails and consisted of a combination of bare-earth, bare-earth/photo-identifiable, and low vegetation ground cover classes. Relative static GPS observation and processing techniques were used for all survey measurements.

The Ground Control Point locations are detailed in section 4 of this document, "Ground Control Point Documentation Reports".

2.3 Network Design

A primary geodetic network consisting of 55 PBO/CORS stations was established by downloading several 24-hour data files for each station for multiple days and post-processing the resulting baselines. The resulting network comprises 107 baselines of a minimum 24-hour duration each. Ninety-two new control points were established and subsequently tied into two of the PBO/CORS stations by downloading the appropriate 24-hour RINEX files and post-processing the static observation in Trimble Business Center. The project diagrams above illustrate the primary network connections and the new control point locations.

2.4 Data Post-processing and Analysis

Observed relative GPS baselines were processed in Trimble Business Center. All processed observations consist of quasi-independent baselines (i.e. in accordance with the "n-1 baselines" rule where n = number of receivers in a given 'session'). The International GPS Service for Geodynamics (IGS) rapid precise orbits (igr) were used in the processing of all baseline vectors. The 'igr' orbits are published with a latency of approximately 30 hours. These orbits are globally accurate to within ~5cm and are particularly important when processing long baselines.

One temporary base station point (in addition to the PBO/CORS) was established at the Florence Municipal Airport in Florence, OR. This point was tied into two local PBO stations via static GPS data acquired during the campaign.

It is well known that the Earth's crust deforms over time. The geometric variations of the Earth's surface over time must be taken into account for the realization of terrestrial reference systems. It is for this reason that there is inherent inconsistency between the 'published' coordinates of the PBO/CORS and the current survey campaign.

For the purpose of the new control survey, the methodology employed by Towill was to transform the published control coordinates to the mid-epoch of the GPS survey using the National Geodetic Survey software HTDP (Horizontal Time Dependent Positioning) software. The software employs crustal motion models that incorporate both continuous and episodic components of crustal motion. These models assume that points on the Earth's surface move with constant horizontal velocities. This is a generally accepted approach, except for years following the accelerated motion of the plates associated with large earthquakes. The episodic motion (created by earthquakes) is modeled by dislocation theory. The Northridge Earthquake of 1994 is an example. It is modeled by dislocation theory and is incorporated into the HTDP software.

The published geodetic coordinates of the PBO/CORS were transformed using HTDP from the published values (NAD83[2011], epoch 2010.0), to the datum and epoch associated with the new surveys, viz., NAD83[2011], epoch 2016.35. This ensures compatibility between the GPS observations (vectors), and the coordinates used as constraints in the final network adjustment.

2.5 *Adjustments*

A minimally constrained, primary network adjustment was executed to verify the internal integrity of the baseline computations and to derive appropriate a-priori baseline observation weighting factors. In the resulting adjustment, the estimated variance factor ($\sigma_o^2 = 1.0002$) passed the χ^2 -test. This indicates appropriate *a priori* estimates of the accuracy of the GPS baseline vectors. None of the 321 vector component residuals or associated standardized residuals were flagged for possible rejection under the τ -max test at the 95 percent level of confidence. The relative horizontal accuracy of the network can be assessed by reviewing the relative 95 percent confidence regions (ellipses) of the adjustment. All station pairings meet the Federal Geodetic Control Subcommittee (FGCS) relative positioning standard for Order B surveys (8mm + 8ppm).

The HTDP-translated latitude and longitude of each PBO/CORS and the published ellipsoid height on the GRS80 ellipsoid were held as weighted observations in a fully constrained primary network adjustment. The estimated variance factor ($\sigma_o^2 = 0.9868$) passed the χ^2 -test at the 95 percent level of confidence. This indicates that network was not being unduly distorted by the imposition of constraints. No residuals were flagged for possible rejection.

Ninety-two control points were established and tied into two of the PBO/CORS stations by downloading the appropriate 24-hour RINEX files and post-processing the static observation in Trimble Business Center. These processed vectors were incorporated into a third least-squares adjustment to derive final coordinates and

elevations of each of the newly established control points. The adjusted final coordinates were then run through HTDP to translate the values back to 2010.0 from the mid-epoch of the survey.

2.6 *Published PBO Coordinates / Adjustment Constraints*

The published coordinates of the PBO / CORS stations that were used as control for this survey and, ultimately, constraints (following the HTDP process described above) in the network adjustments is tabulated below:

PBO / CORS Published Coordinates and Ellipsoid Heights

Horizontal Datum: NAD83(2011)

Epoch: 2010.0

Linear Unit: International Meter

Point	Latitude			Longitude			Ellipsoid Height		
	°	'	"	°	'	"			
<i>NGS Published Coordinates</i>									
CABL	N	42	50	09.94308	W	124	33	47.98620	38.286
CHZZ	N	45	29	11.44093	W	123	58	41.18376	51.161
LFLO	N	43	59	00.96713	W	124	06	27.69084	-6.042
NEAH	N	48	17	52.26367	W	124	37	29.60004	460.245
P059	N	38	55	42.03419	W	123	43	34.25628	-10.822
P067	N	35	33	06.29824	W	121	00	10.60668	107.594
P157	N	40	14	51.15527	W	124	18	29.00880	696.236
P172	N	36	13	41.05535	W	121	46	02.02944	313.190
P173	N	35	56	44.56712	W	121	17	25.15020	339.828
P181	N	37	54	52.34987	W	122	22	36.26760	72.732
P185	N	39	15	40.67993	W	123	44	57.55488	146.834
P188	N	38	40	04.27069	W	123	13	46.37496	209.358
P210	N	36	48	58.08233	W	121	43	54.58008	3.600
P231	N	36	37	18.02341	W	121	54	19.42416	-25.764
P316	N	41	33	32.86577	W	124	05	10.06188	235.389
P415	N	46	39	21.55259	W	123	43	47.45496	-15.081
P472	N	32	53	21.13976	W	117	06	16.85412	138.603
P474	N	33	21	18.68098	W	117	14	55.24188	183.653
P475	N	32	39	59.01142	W	117	14	38.11776	-24.285
P523	N	35	18	16.00618	W	120	51	36.93060	41.984
P534	N	37	03	40.41997	W	122	14	15.34524	204.804
PABH	N	47	12	46.06456	W	124	12	16.43148	13.277
PTSG	N	41	46	57.85558	W	124	15	18.66132	-9.794

Point	Latitude			Longitude			Ellipsoid Height		
	°	'	"	°	'	"			
SBCC	N	33	33	10.78852	W	117	39	41.30280	89.406
TJRN	N	34	29	00.49571	W	120	07	57.17748	157.816
TRND	N	41	03	13.97729	W	124	09	03.06396	78.680
VNDP	N	34	33	22.71092	W	120	36	59.17428	-9.147
<i>SOPAC SECTOR Published Coordinates</i>									
CIRX	N	34	06	34.38086	W	118	56	14.21628	488.885
P161	N	40	38	14.49384	W	124	12	47.05236	32.868
P177	N	37	31	41.39000	W	122	29	42.13464	72.321
P182	N	38	29	42.04021	W	123	10	52.43052	397.293
P193	N	38	07	22.55902	W	122	54	29.25540	67.104
P312	N	39	31	45.03011	W	123	41	54.09492	255.394
P315	N	39	51	48.88562	W	123	43	00.77268	258.381
P364	N	43	05	25.16694	W	124	24	33.38532	6.807
P365	N	43	23	43.85245	W	124	15	12.47796	27.467
P366	N	43	36	51.50484	W	123	58	46.47828	529.468
P367	N	44	35	06.87286	W	124	03	41.59584	23.277
P395	N	45	01	20.19122	W	123	51	27.03708	53.385
P396	N	45	18	34.23391	W	123	49	22.36332	54.908
P397	N	46	25	17.81465	W	123	47	56.91588	566.625
P398	N	46	55	32.81066	W	123	54	58.05864	23.811
P401	N	47	56	13.86182	W	124	33	25.20540	36.486
P402	N	47	45	58.38217	W	124	18	21.16656	24.010
P403	N	48	03	44.34448	W	124	08	27.08628	284.951
P407	N	45	57	16.72355	W	123	55	51.55968	-12.778
P435	N	48	03	34.36160	W	123	30	11.73996	287.623
P436	N	48	02	43.07377	W	123	08	03.59016	191.191
P437	N	48	00	06.49840	W	122	27	32.90436	12.789
P525	N	35	25	32.74939	W	120	48	29.25720	271.978

Point	Latitude			Longitude			Ellipsoid Height		
	°	'	"	°	'	"			
P548	N	34	28	00.48986	W	119	30	14.14980	1135.502
P733	N	42	26	31.24331	W	124	24	47.81268	184.951
P734	N	42	04	35.87203	W	124	17	35.66652	113.718
PVRS	N	33	46	25.89424	W	118	19	14.07036	60.538
VIMT	N	34	07	35.19970	W	118	30	51.84000	554.389
VNCO	N	34	16	32.74244	W	119	14	15.56124	26.345

Notes: Ellipsoid heights are to the Antenna Reference Point (ARP) for the respective PBO/CORS antenna.

2.7 Station Reoccupation Comparison

The allowable tolerance of $\pm 5\text{cm}$ within the 95% confidence level was specified for the survey accuracy. Forty-six of the control points were occupied a second time at least 4 hours, and in most cases several hours or days, after the initial occupation.

The computed coordinate values and elevations of the re-occupations were compared with those of the initial occupations to evaluate the accuracy of the survey effort. The RMS of the difference in coordinates is 0.007, 0.006 and 0.020 meters for each of northing, easting, and elevation, respectively. The reoccupation results are tabulated below:

Dewberry
El Nino Lidar Campaign Control
RE-OCCUPATION COMPARISON

Point Name	Re-occupation Name	dNorthing (Meter)	dEasting (Meter)	dElev (Meter)
CP01	CP01_R	0.003	0.009	-0.016
CP03	CP03_R	-0.008	0.000	-0.028
CP05	CP05_R	-0.007	0.001	-0.021
CP06	CP06_R	0.000	0.000	-0.019
CP09	CP09_R	-0.002	0.000	-0.015
CP11	CP11_R	-0.010	0.001	0.019
CP13	CP13_R	0.007	-0.009	0.011
CP15	CP15_R	0.003	0.000	0.001
CP18	CP18_R	0.004	0.000	-0.008
CP20	CP20_R	0.010	0.009	-0.005
CP22	CP22_R	-0.002	0.009	-0.003
CP24	CP24_R	0.008	-0.018	0.019
CP26	CP26_R	0.002	-0.001	-0.011
CP28	CP28_R	-0.003	0.000	0.004
CP30	CP30_R	-0.007	0.009	-0.018
CP32	CP32_R	0.001	0.009	-0.002
CP34	CP34_R	0.013	0.000	-0.015
CP35	CP35_R	0.005	-0.009	0.004
CP38	CP38_R	-0.005	0.000	-0.011
CP40	CP40_R	0.010	0.000	0.023
CP42	CP42_R	-0.009	-0.008	0.000
CP44	CP44_R	0.007	0.009	0.024
CP45	CP45_R	0.004	-0.009	0.024

Point Name	Re-occupation Name	dNorthing (Meter)	dEasting (Meter)	dElev (Meter)
CP48	CP48_R	-0.005	0.009	0.024
CP50	CP50_R	0.001	0.000	0.001
CP51	CP51_R	0.001	0.000	-0.001
CP55	CP55_R	0.003	0.000	0.007
CP57	CP57_R	-0.003	0.000	0.006
CP59	CP59_R	0.002	-0.008	0.007
CP61	CP61_R	0.001	0.000	0.003
CP63	CP63_R	-0.004	0.000	0.044
CP65	CP65_R	0.001	0.000	0.013
CP67	CP67_R	0.002	-0.007	0.005
CP69	CP69_R	-0.002	0.000	0.008
CP71	CP71_R	-0.005	0.000	-0.015
CP73	CP73_R	0.003	-0.007	-0.006
CP75	CP75_R	-0.006	0.000	-0.008
CP77	CP77_R	0.001	-0.007	0.011
CP79	CP79_R	0.005	-0.007	-0.041
CP81	CP81_R	0.014	0.001	-0.037
CP83	CP83_R	0.003	0.000	0.018
CP85	CP85_R	0.013	0.000	-0.038
CP87	CP87_R	0.010	0.000	0.017
CP89	CP89_R	-0.020	-0.007	0.035
CP90	CP90_R	0.021	0.000	0.044

3. FINAL COORDINATES/ELEVATIONS

Dewberry
 El Nino Lidar Campaign Control
FINAL ADJUSTED COORDINATES
 Horizontal Datum: NAD83(2011)
 Epoch: 2010.0

Point	Latitude		Longitude		Ellipsoid Height (Meter)	Projected (Meter)			Ortho. Height (Meter)	Description	Re-Occupied	
	°	'	°	'		N	E	E				
<i>Control Points - UTM Zone 11</i>												
CP01	N 32	37	20.17499	W 117	08	05.18370	-31.462	3609421.133	487356.700	3.825	PID / Bare Earth	X
CP02	N 32	48	27.26921	W 117	15	40.96908	-7.266	3629985.235	475530.070	27.900	Low Vegetation	
CP03	N 33	03	51.75671	W 117	18	09.13176	-18.614	3658464.484	471758.807	16.183	Bare Earth	X
CP04	N 33	18	51.88187	W 117	28	57.71136	11.111	3686247.479	45068.821	45.717	Low Vegetation	
CP05	N 33	27	42.42985	W 117	42	41.78232	34.618	3702708.923	433872.508	69.622	PID / Bare Earth	X
CP06	N 33	37	29.83037	W 117	56	48.96240	-31.826	3720974.700	412168.712	3.521	Low Vegetation	X
CP07	N 33	45	48.18946	W 118	11	02.53104	-32.172	3736550.900	390351.568	3.588	Bare Earth	
CP08	N 33	46	21.92646	W 118	25	21.46116	9.471	3737869.464	368269.371	45.734	Low Vegetation	
CP09	N 33	59	59.64832	W 118	29	07.13580	-30.955	3763139.519	362828.378	4.864	PID / Bare Earth	X
CP10	N 34	01	48.86375	W 118	45	16.46820	-2.243	3766897.193	338016.754	33.590	Low Vegetation	
CP11	N 34	05	08.08363	W 119	02	12.81696	-24.179	3773517.429	312071.298	11.753	PID / Bare Earth	X
CP12	N 34	14	25.13674	W 119	15	56.68740	-29.749	3791124.412	291334.175	6.420	Low Vegetation	
CP13	N 34	23	35.91188	W 119	31	23.76534	-32.723	3808653.053	286033.741	2.805	PID / Bare Earth	X
CP14	N 34	25	02.20087	W 119	49	40.65492	-31.509	3812051.689	240089.549	4.434	Low Vegetation	
<i>Control Points - UTM Zone 10</i>												
CP15	N 34	28	26.21402	W 120	08	12.06096	3.366	3818429.812	762983.115	39.387	PID / Bare Earth	X
CP16	N 34	30	36.62078	W 120	30	03.93788	-30.987	3821560.589	729406.082	5.194	Low Vegetation	
CP17	N 34	40	56.64072	W 120	36	17.73252	-19.721	3840433.867	719418.300	16.377	PID / Bare Earth	
CP18	N 34	57	54.11821	W 120	39	00.71496	-28.223	3871687.284	714533.253	7.506	PID / Bare Earth	X
CP19	N 35	10	49.63166	W 120	44	05.15292	-33.110	3895404.942	706268.857	2.066	Low Vegetation	
CP20	N 35	22	17.26597	W 120	51	50.66098	-29.145	3916332.960	694036.432	5.832	PID / Bare Earth	X

Point	Latitude	Longitude	Ellipsoid Height	Projected N	Projected E	Ortho. Height	Description	Re-Occured
CP21	N 35 27 32.30089	W 120 57 42.40116	-21.746	3925852.275	684959.475	13.173	Low Vegetation	
CP22	N 35 32 31.87770	W 121 05 31.96014	-22.099	3934846.461	672943.218	12.829	Low Vegetation	X
CP23	N 35 42 13.64951	W 121 18 15.36048	-19.083	3952420.495	653408.087	15.708	Bare Earth	
CP24	N 35 55 16.61781	W 121 28 00.04296	12.615	3978303.729	638337.011	47.007	PI/D / Bare Earth	X
CP25	N 36 08 20.00551	W 121 39 02.16216	54.524	4000196.840	621407.995	88.567	Low Vegetation	
CP26	N 36 19 38.46961	W 121 53 39.45372	12.967	4020824.970	598243.144	47.520	Bare Earth	X
CP27	N 36 33 21.90650	W 121 55 41.15352	-6.433	4046163.777	595926.814	28.139	Low Vegetation	
CP28	N 36 39 37.35131	W 121 49 14.86992	-6.446	4057845.356	605387.780	27.827	PI/D / Bare Earth	X
CP29	N 36 55 56.84783	W 121 51 40.72752	-19.069	4087985.261	601407.291	14.348	Low Vegetation	
CP30	N 36 59 29.47250	W 122 09 55.18926	-3.137	4094257.208	574274.602	30.579	Bare Earth	X
CP31	N 37 11 00.24878	W 122 23 33.67608	-16.809	4115390.793	553906.465	16.715	Low Vegetation	
CP32	N 37 18 01.09532	W 122 24 19.09530	-27.082	4128352.701	552705.122	6.157	PI/D / Bare Earth	X
CP33	N 37 26 22.04243	W 122 26 34.37160	-10.816	4143770.156	549283.726	22.231	Low Vegetation	
CP34	N 37 39 57.03383	W 122 29 40.46064	28.868	4168860.774	544575.938	61.696	Bare Earth	X
CP35	N 37 51 48.12835	W 122 35 08.90466	115.004	4190736.529	536432.497	147.600	Low Vegetation	X
CP36	N 38 01 34.99453	W 122 52 38.10144	-22.365	4208749.869	510773.226	10.300	PI/D / Bare Earth	
CP37	N 38 04 36.51622	W 122 58 29.95104	-18.147	4214337.607	502193.835	14.630	Low Vegetation	
CP38	N 38 18 52.02004	W 123 01 55.80192	-29.548	4240705.328	497187.908	2.714	Bare Earth	X
CP39	N 38 29 55.79336	W 123 12 31.98600	114.752	4261184.436	481785.369	146.836	Low Vegetation	
CP40	N 38 40 35.25857	W 123 25 18.99300	2.896	4280958.534	463297.377	34.974	PI/D / Bare Earth	X
CP41	N 38 51 33.40879	W 123 39 09.71532	0.275	4301363.329	443369.632	32.517	Bare Earth	
CP42	N 39 07 18.14156	W 123 42 57.24162	24.390	4330526.523	438114.933	55.983	Low Vegetation	X
CP43	N 39 19 44.28365	W 123 48 34.18740	-6.090	4353595.893	430229.559	25.392	PI/D / Bare Earth	
CP44	N 39 33 58.22323	W 123 46 06.95442	-3.159	4379890.558	433978.994	27.702	Low Vegetation	X
CP45	N 39 46 38.03380	W 123 50 06.62694	53.879	4403366.107	428478.198	84.496	Bare Earth	X
CP46	N 40 01 22.44374	W 124 04 08.79708	-14.964	4430846.417	408770.633	15.928	PI/D / Bare Earth	

Point	Latitude	Longitude	Ellipsoid Height	Projected N	Projected E	Ortho. Height	Description	Re-Occurred
CP47	N 40 21 13.83610	W 124 21 39.92508	-21.761	4467920.598	384417.874	9.717	Low Vegetation	
CP48	N 40 34 21.06894	W 124 20 59.74602	-22.436	4492179.976	385736.885	9.074	Bare Earth	X
CP49	N 40 49 14.02464	W 124 11 24.74988	-23.490	4519519.624	399629.622	7.240	Low Vegetation	
CP50	N 41 03 26.76371	W 124 08 54.42720	-23.424	4545788.153	403498.420	6.638	PID / Bare Earth	X
CP51	N 41 17 02.11735	W 124 05 30.86772	-22.451	4570850.714	408563.356	7.002	Low Vegetation	X
CP52	N 41 35 37.24829	W 124 05 53.57076	-22.809	4605246.942	408471.547	5.958	PID / Bare Earth	
CP53	N 41 47 00.18694	W 124 15 09.03636	-12.308	4626484.284	395918.095	18.543	PID / Bare Earth	X
CP54	N 42 02 42.64325	W 124 16 06.92888	-22.474	4655570.846	395011.734	5.656	Low Vegetation	
CP55	N 42 16 31.32728	W 124 24 18.08820	-21.290	4681306.538	384141.112	6.691	Bare Earth	X
CP56	N 42 32 09.55003	W 124 23 59.80452	-13.043	4710238.546	385036.855	14.175	PID / Bare Earth	
CP57	N 42 45 40.55636	W 124 30 59.34096	-6.718	4735419.350	375915.297	20.549	Low Vegetation	X
CP58	N 42 50 07.28059	W 124 33 29.12328	31.991	4743708.906	372662.896	59.335	Bare Earth	
CP59	N 43 06 17.69641	W 124 26 03.64794	-3.995	4773464.005	383287.053	22.831	PID / Bare Earth	X
CP60	N 43 14 09.07170	W 124 23 27.39788	-21.146	4787945.602	387060.361	5.538	Low Vegetation	
CP61	N 43 27 14.09855	W 124 16 35.47344	-20.613	4812014.777	396721.634	5.411	PID / Bare Earth	X
CP62	N 43 39 35.06954	W 124 12 27.76320	-18.206	4834790.803	402820.774	7.250	Low Vegetation	
CP63	N 43 52 56.26139	W 124 09 12.39372	-20.811	4859446.280	407340.877	4.279	PID / Bare Earth	X
CP64	N 44 09 37.43503	W 124 07 01.25976	-9.766	4890294.787	410685.631	14.459	Low Vegetation	
CP65	N 44 24 50.71095	W 124 05 00.45888	-11.682	4918436.985	413740.802	12.387	PID / Bare Earth	X
CP66	N 44 40 33.73781	W 124 04 38.06688	3.501	4947527.748	414619.804	27.503	Low Vegetation	
CP67	N 44 56 08.31077	W 124 01 23.06370	16.217	4976310.139	419275.945	39.471	PID / Bare Earth	X
CP68	N 45 11 32.70494	W 123 58 03.00720	-15.851	5004781.230	424001.720	7.145	Low Vegetation	
CP69	N 45 27 38.08796	W 123 58 12.45756	-14.965	5034574.766	424154.255	8.303	PID / Bare Earth	X
CP70	N 45 43 33.33061	W 123 56 32.23500	-13.350	5064028.358	426677.169	9.530	Low Vegetation	
CP71	N 45 55 10.28977	W 123 58 22.69884	38.708	5085566.442	424551.497	62.072	PID / Bare Earth	X
CP72	N 46 10 38.05529	W 123 58 41.70488	-12.890	5114205.189	424494.105	11.097	Low Vegetation	

Point	Latitude		Longitude		Ellipsoid Height	Projected N	Projected E	Ortho. Height	Description	Re-Occurred
CP73	N 46 23	43.24504	W 124 03	34.37010	-18.373	5138520.068	418543.306	6.026	PID / Bare Earth	X
CP74	N 46 32	53.76282	W 124 03	36.13428	-17.818	5155512.475	418733.586	6.526	Low Vegetation	
CP75	N 46 48	34.51516	W 124 05	57.24384	-18.289	5184591.198	416133.956	6.227	Bare Earth	X
CP76	N 46 55	42.13970	W 124 10	18.43788	-18.531	5197870.813	410795.543	6.286	PID / Bare Earth	
CP77	N 47 04	13.85547	W 124 10	18.05970	-19.080	5213669.419	411039.857	5.637	Bare Earth	X
CP78	N 47 17	56.19059	W 124 14	46.72680	-17.018	5239138.461	405778.708	7.306	Low Vegetation	
CP79	N 47 33	18.97528	W 124 21	24.14178	-0.492	5267764.194	397929.937	23.261	Bare Earth	X
CP80	N 47 42	26.96638	W 124 24	52.14384	11.773	5284758.814	393891.755	35.312	Low Vegetation	
CP81	N 47 55	14.37109	W 124 38	15.59256	-18.872	5308779.769	377652.065	4.442	PID / Bare Earth	X
CP82	N 48 18	04.29808	W 124 39	49.04352	1.169	5351115.071	376627.234	22.632	Low Vegetation	
CP83	N 48 21	10.61134	W 124 32	43.68408	0.991	5356684.107	385505.203	21.721	Bare Earth	X
CP84	N 48 15	31.76996	W 124 15	16.43112	-14.727	5345828.918	406885.053	5.947	Low Vegetation	
CP85	N 48 09	53.62330	W 123 57	04.81788	-12.788	5335065.501	429261.236	7.596	Bare Earth	X
CP86	N 48 08	30.42881	W 123 34	11.27964	-15.884	5332216.305	457612.162	4.227	Low Vegetation	
CP87	N 48 06	44.54977	W 123 14	55.40424	22.996	5328820.270	481486.688	43.641	PID / Bare Earth	X
CP88	N 48 07	29.99035	W 123 04	52.95288	-17.806	5330196.512	493944.410	3.288	Low Vegetation	
CP89	N 48 06	12.07210	W 122 53	04.65846	-17.834	5327794.062	508589.077	3.806	PID / Bare Earth	X
CP90	N 48 08	36.09883	W 122 45	22.11192	-18.821	5332263.165	518140.234	3.367	Low Vegetation	X
CP91	N 48 15	27.26654	W 124 16	59.23020	-10.463	5345724.904	404763.367	10.271	Low Vegetation	
KK23	N 35 42	13.36241	W 121 18	15.23556	-19.274	3952411.703	653412.379	15.517	Bare Earth	