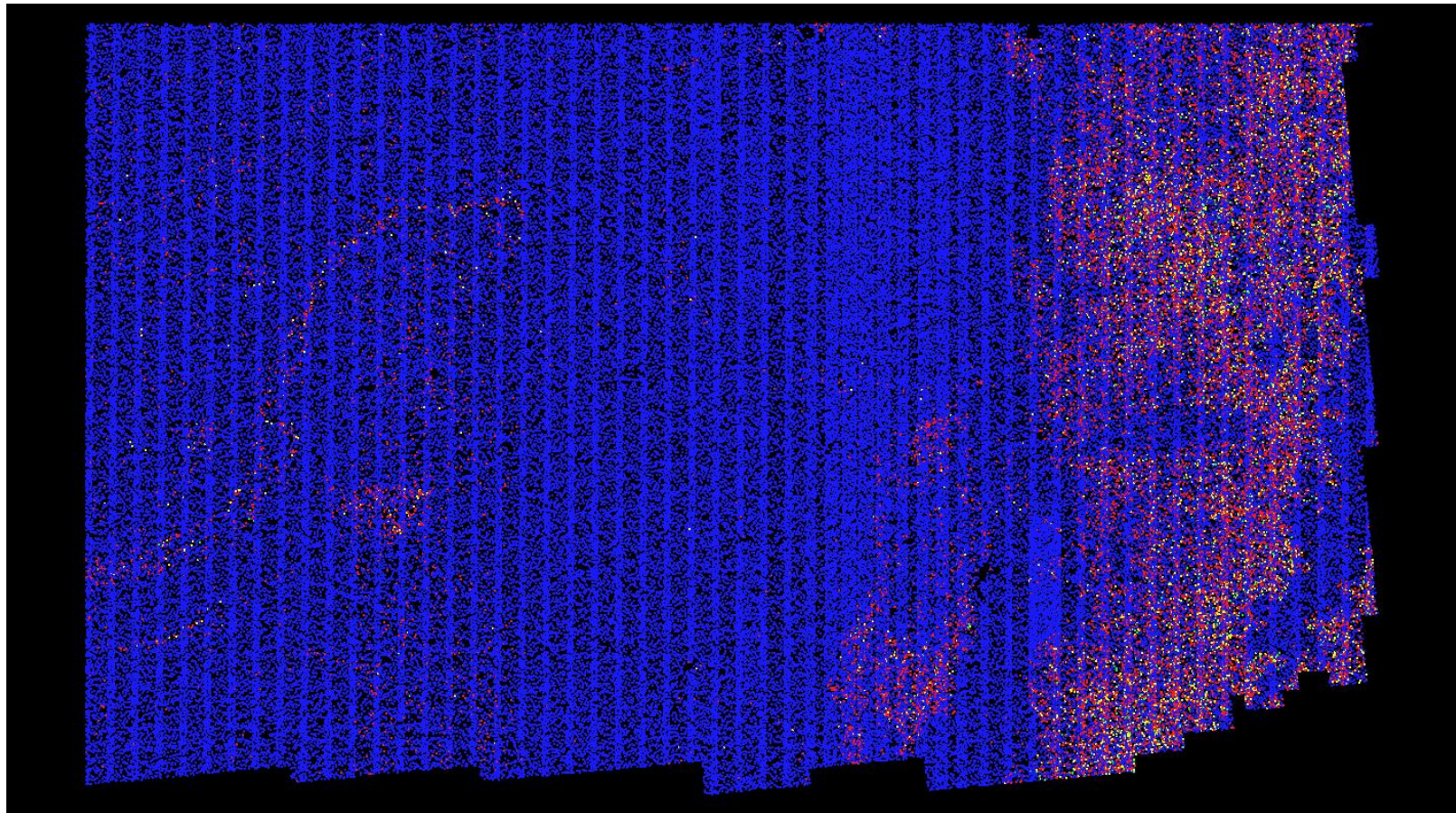


C-2 Report on Multiple Discrete Returns - All Returns

The purpose of this section is to show a graphic of lidar data points colored by all returns. Blank flight lines can indicate a collection or processing problem dealing with lidar return attribute information.

[Data Source - Y:\Mapping\Projects\65220595_CO_SanLuisJuanMiguel\Production\Final_Client_Deliverables\Block1_Surdex\point_cloud\Swaths](Y:\Mapping\Projects\65220595_CO_SanLuisJuanMiguel\Production\Final_Client_Deliverables\Block1_Surdex\point_cloud\Swaths)

[Result Path - D:\00_San_Miguel\San_Luis_Juan_Miguel_B1A_QC\C_2\ColorByReturns.jpg](D:\00_San_Miguel\San_Luis_Juan_Miguel_B1A_QC\C_2\ColorByReturns.jpg)



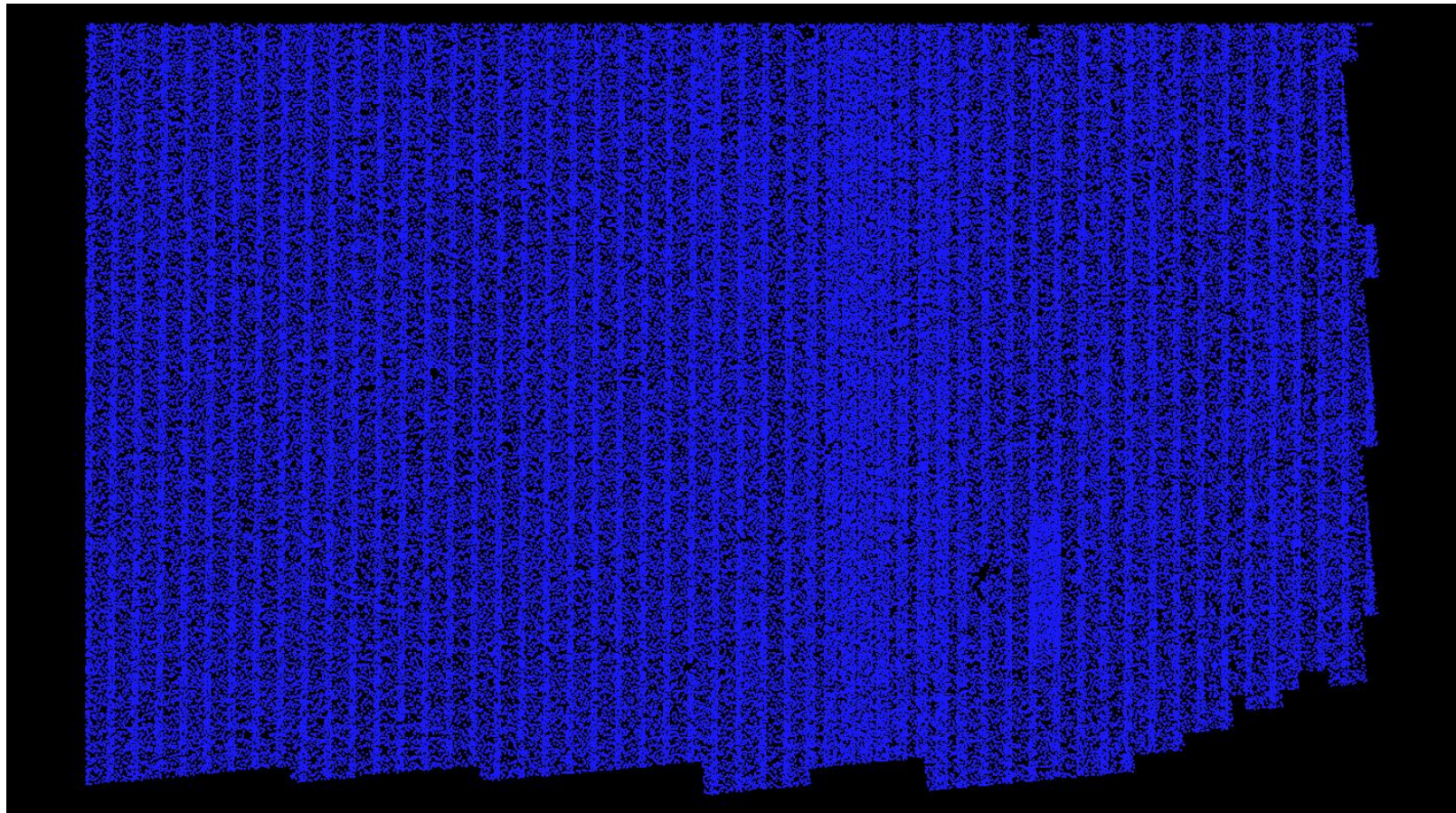
First Second Third Fourth or other

C-2 Report on Multiple Discrete Returns - First Returns

The purpose of this section is to show a graphic of lidar data points colored by first returns. Blank flight lines can indicate a collection or processing problem dealing with lidar return attribute information.

[Data Source - Y:\Mapping\Projects\65220595_CO_SanLuisJuanMiguel\Production\Final_Client_Deliverables\Block1_Surdex\point_cloud\Swaths](#)

[Result Path - D:\00_San_Miguel\San_Luis_Juan_Miguel_B1A_QC\C_2\ColorByReturns_FirstReturns.jpg](#)

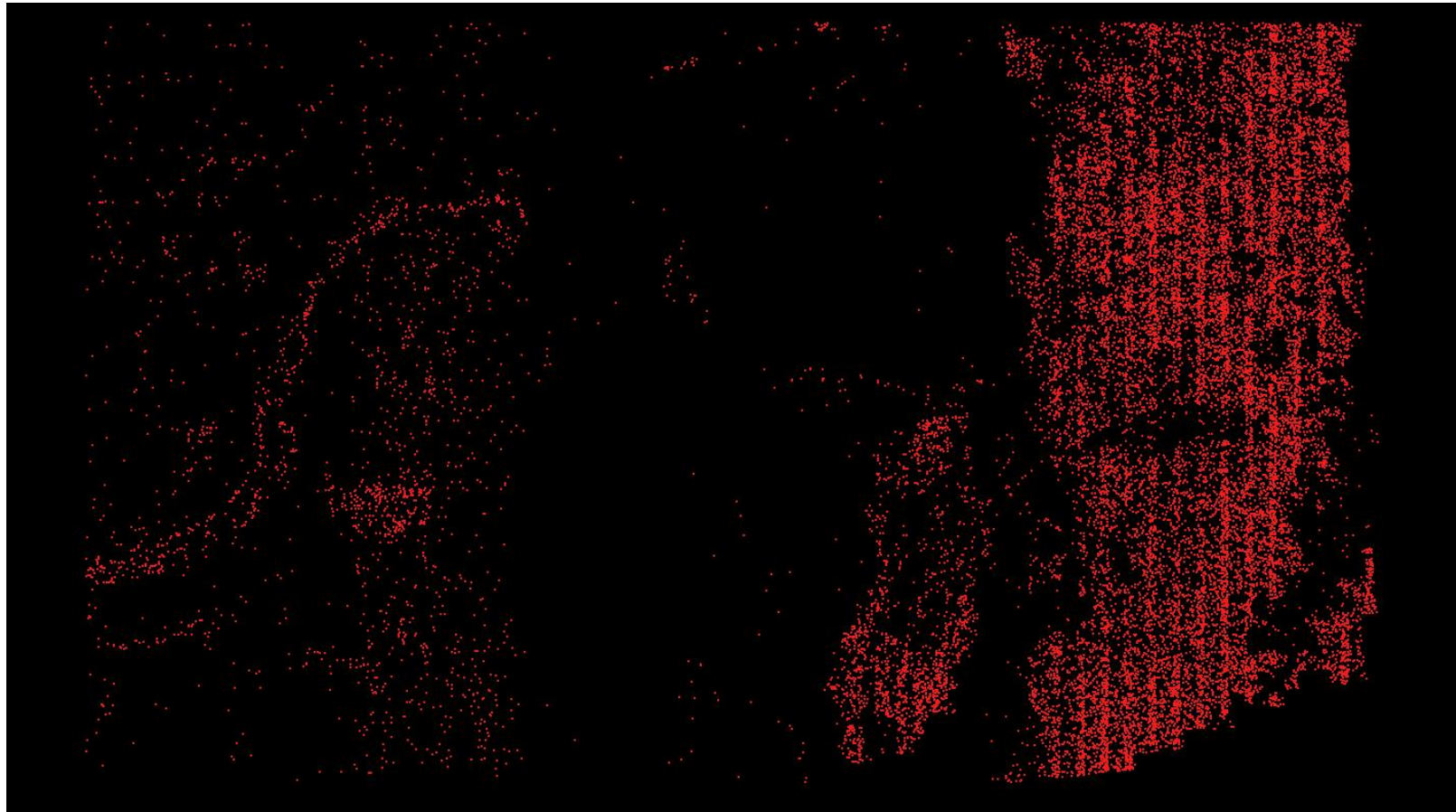


C-2 Report on Multiple Discrete Returns - Second Returns

The purpose of this section is to show a graphic of lidar data points colored by second returns. Blank flight lines can indicate a collection or processing problem dealing with lidar return attribute information.

[Data Source - Y:\Mapping\Projects\65220595_CO_SanLuisJuanMiguel\Production\Final_Client_Deliverables\Block1_Surdex\point_cloud\Swaths](Y:\Mapping\Projects\65220595_CO_SanLuisJuanMiguel\Production\Final_Client_Deliverables\Block1_Surdex\point_cloud\Swaths)

[Result Path - D:\00_San_Miguel\San_Luis_Juan_Miguel_B1A_QC\C_2\ColorByReturns_SecondReturns.jpg](D:\00_San_Miguel\San_Luis_Juan_Miguel_B1A_QC\C_2\ColorByReturns_SecondReturns.jpg)

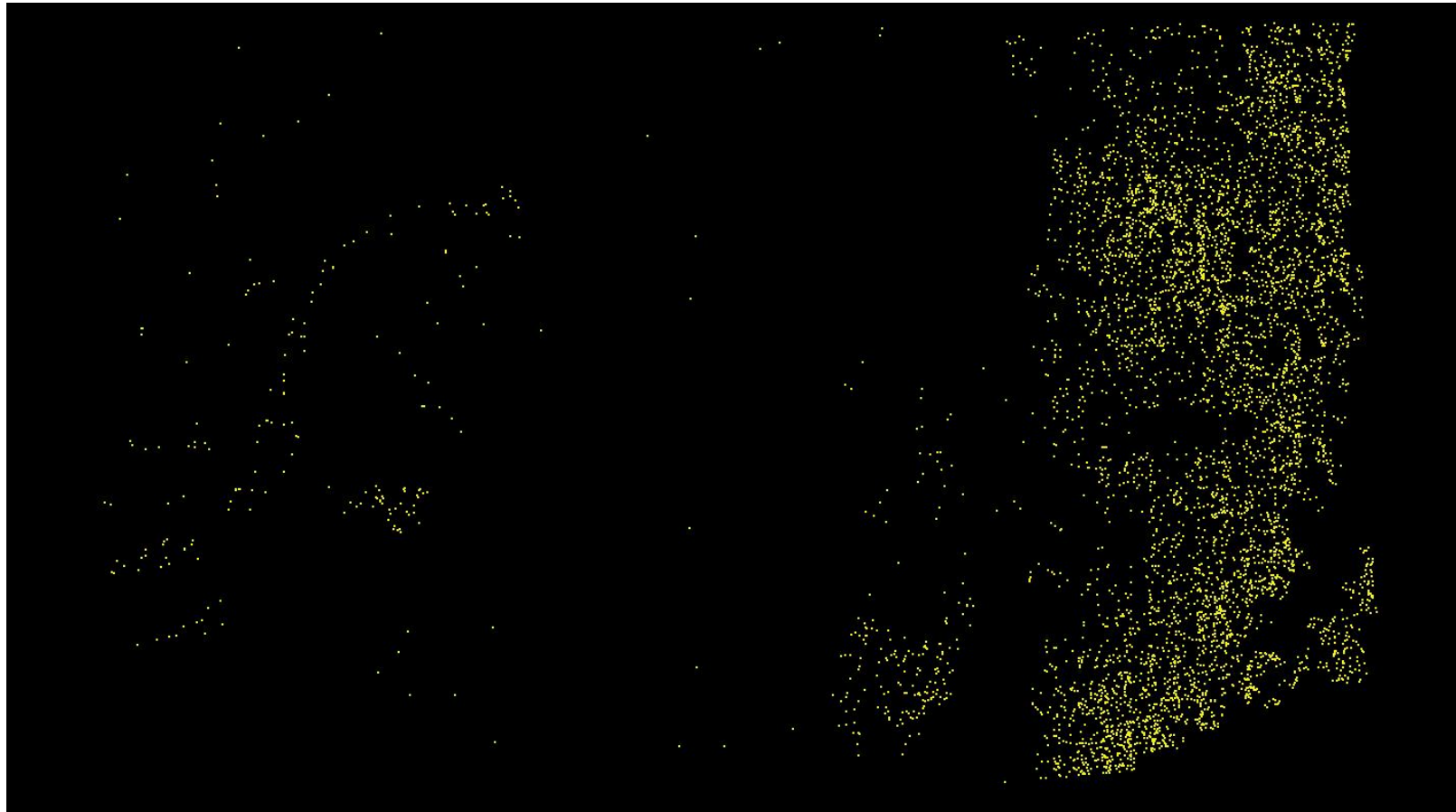


C-2 Report on Multiple Discrete Returns - Third Returns

The purpose of this section is to show a graphic of lidar data points colored by third returns. Blank flight lines can indicate a collection or processing problem dealing with lidar return attribute information.

[Data Source - Y:\Mapping\Projects\65220595_CO_SanLuisJuanMiguel\Production\Final_Client_Deliverables\Block1_Surdex\point_cloud\Swaths](Y:\Mapping\Projects\65220595_CO_SanLuisJuanMiguel\Production\Final_Client_Deliverables\Block1_Surdex\point_cloud\Swaths)

[Result Path - D:\00_San_Miguel\San_Luis_Juan_Miguel_B1A_QC\C_2\ColorByReturns_ThirdReturns.jpg](D:\00_San_Miguel\San_Luis_Juan_Miguel_B1A_QC\C_2\ColorByReturns_ThirdReturns.jpg)



C-2 Report on Multiple Discrete Returns - Other Returns

The purpose of this section is to show a graphic of lidar data points colored by fourth or other returns. Blank flight lines can indicate a collection or processing problem dealing with lidar return attribute information.

[Data Source - Y:\Mapping\Projects\65220595_CO_SanLuisJuanMiguel\Production\Final_Client_Deliverables\Block1_Surdex\point_cloud\Swaths](Y:\Mapping\Projects\65220595_CO_SanLuisJuanMiguel\Production\Final_Client_Deliverables\Block1_Surdex\point_cloud\Swaths)

[Result Path - D:\00_San_Miguel\San_Luis_Juan_Miguel_B1A_QC\C_2\ColorByReturns_OtherReturns.jpg](D:\00_San_Miguel\San_Luis_Juan_Miguel_B1A_QC\C_2\ColorByReturns_OtherReturns.jpg)

