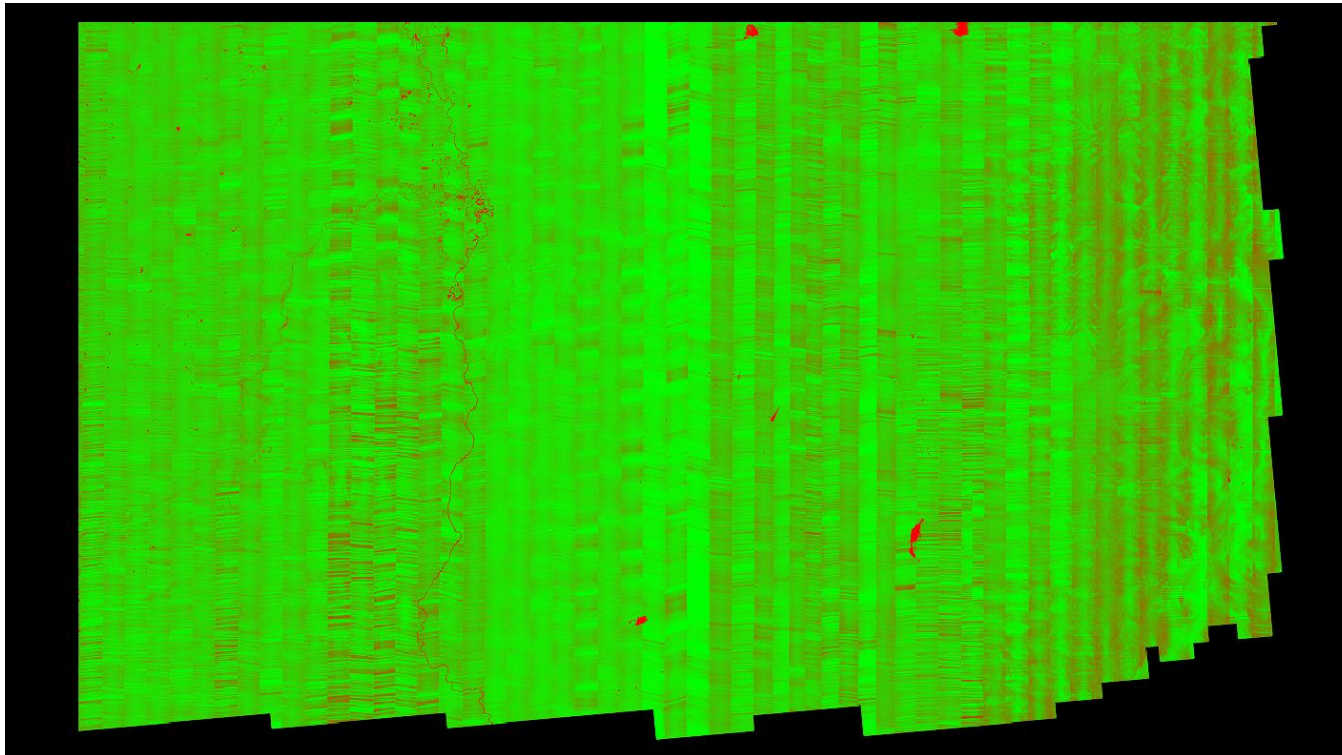


*C-4.2 Grid Based Test: Grid Cell = 1m x 1m, Required PPSM Tested Excluding Overlap Bit Flagged Points*

QL2 selected                      Required QL2 PPSM >= 2  
First return point count computed using a cell size 1m x 1m

First Return Point Density Map



<u>Color</u>	<u>Description</u>	<u>Percentage of cells by color</u>
■	Density greater than or equal to minimum specification of 2 points per cell	0.00
■	Density less than minimum specification of 2 points per cell	100.00

Average first return density = 0.00 ppsm