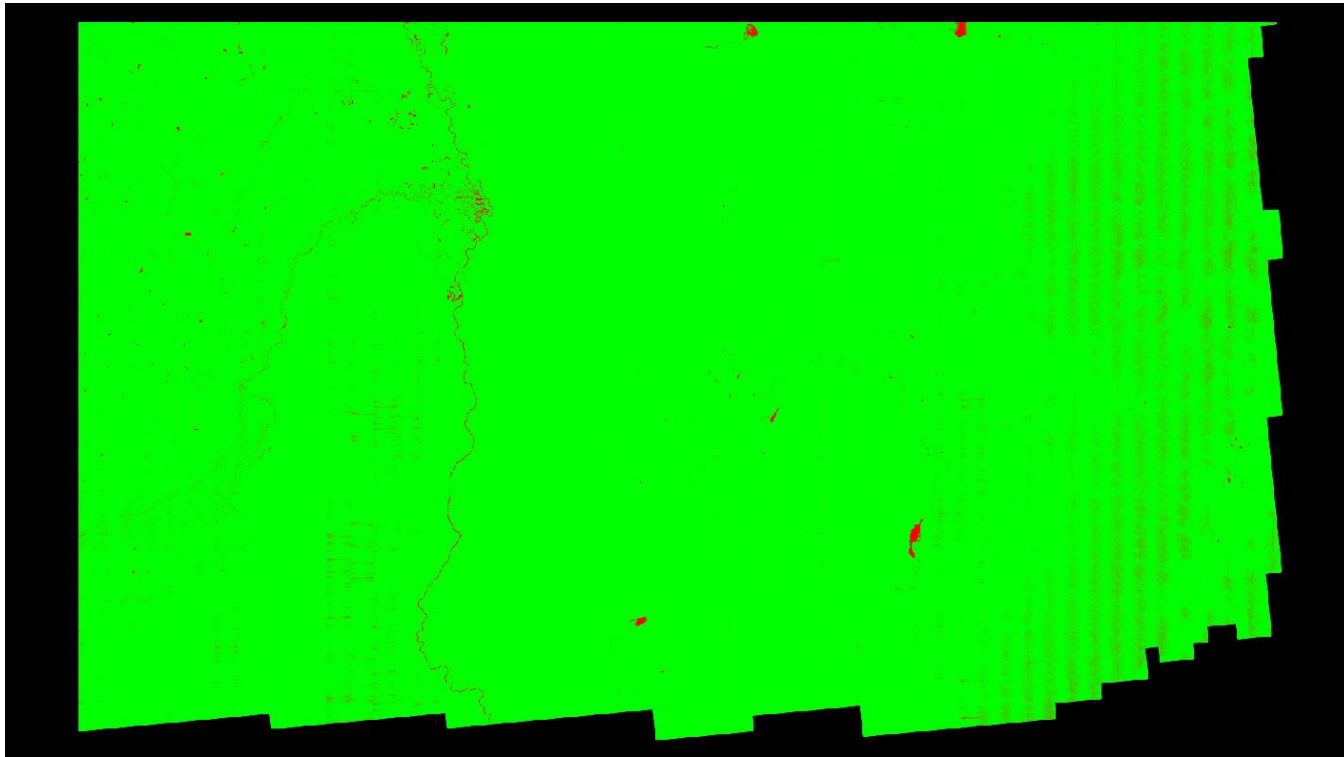


C-4.2 Grid Cell Size Based on Nyquist Sampling Criteria (2 x Required NPS) Excluding Overlap Bit Flagged Points

QL2 selected Required QL2 NPS \leq 0.71 meters
First return point count computed using a cell size of 1.42 meters (2 x 0.71)

First Return Point Density Map



<u>Color</u>	<u>Description</u>	<u>Percentage of cells by color</u>
■	Density greater than or equal to minimum specification of 1 point per cell	0.00
■	Density less than minimum specification of 1 point per cell (0 points per cell)	100.00