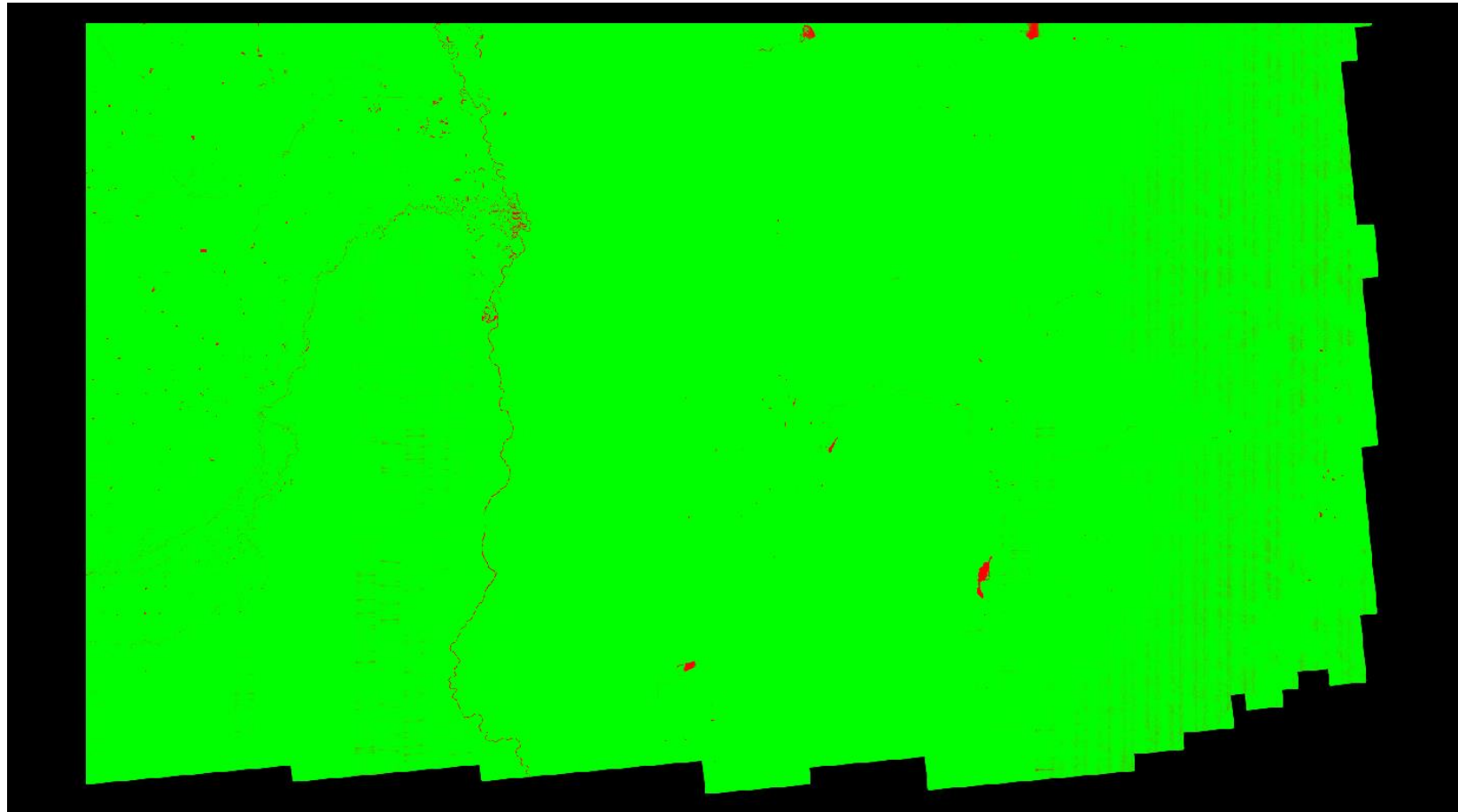


## C-6.1 Report on Spatial Distribution and Regularity - continued

[Result Path - D:\00\\_San\\_Miguel\San\\_Luis\\_Juan\\_Miguel\\_B1A\\_QC\C\\_6\SpatialDistribution\\_SingleFile.jp2](D:\00_San_Miguel\San_Luis_Juan_Miguel_B1A_QC\C_6\SpatialDistribution_SingleFile.jp2)



Cell size: 1.420 Meter

- Green: Cells containing at least one first return lidar point (number of cells = 1,626,185,827)
  - Red: Cells not containing at least one first return lidar point (number of cells = 10,451,105)
  - Background Color: Null data
- Percentage of cells in the grid that contain at least one first return lidar point = 99.36% (Requirement is typically 90%)  
See JPG2000 file for full resolution results