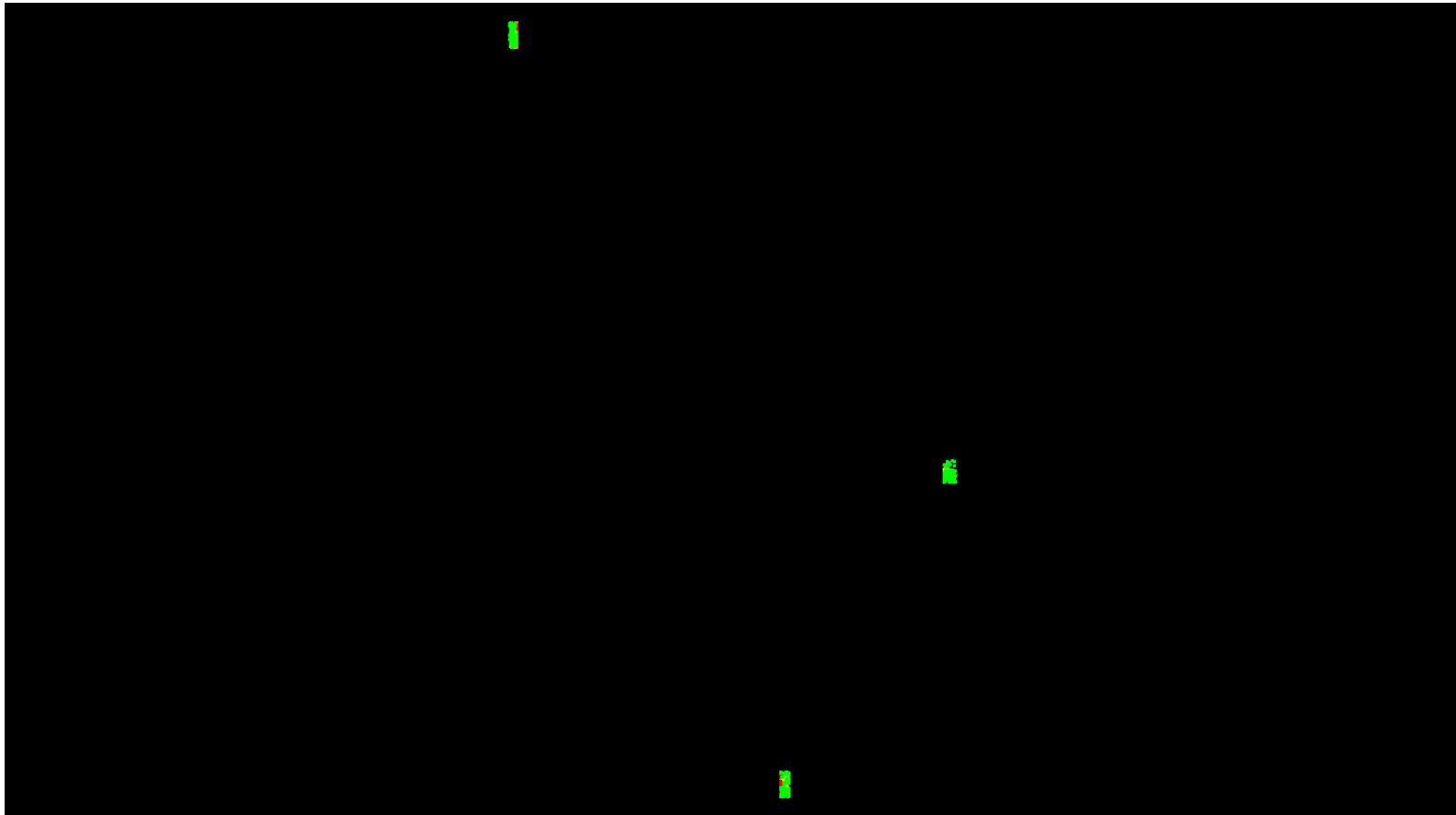


DPH-9.2 DQM Report on Overlap Consistency - Point to Plane Distance

The purpose of this section is to show a thematically rendered map of the DQM-generated distance measurements. The colors are gradated by the selected QL's swath overlap difference RMSDz limits.

[Data Source - Y:\Mapping\Projects\65220595_CO_SanLuisJuanMiguel\Production\Final_Client_Deliverables\Block1_Surdex\point_cloud\tilecls](Y:\Mapping\Projects\65220595_CO_SanLuisJuanMiguel\Production\Final_Client_Deliverables\Block1_Surdex\point_cloud\tilecls)

[Result Path - D:\00_San_Miguel\San_Luis_Juan_Miguel_B1A_QC\DPH_9_2_DQM\PointToPlaneDistance.jp2](D:\00_San_Miguel\San_Luis_Juan_Miguel_B1A_QC\DPH_9_2_DQM\PointToPlaneDistance.jp2)



0	0.080	0.160	0.240	0.800 (Meter)
0	0.262	0.525	0.787	2.625 (Feet)

A maximum vertical separation cutoff has been applied to this graphic for the purpose of masking out disruptive features that do not show calibration issues between flight lines (e.g., trees, moving cars, etc.).