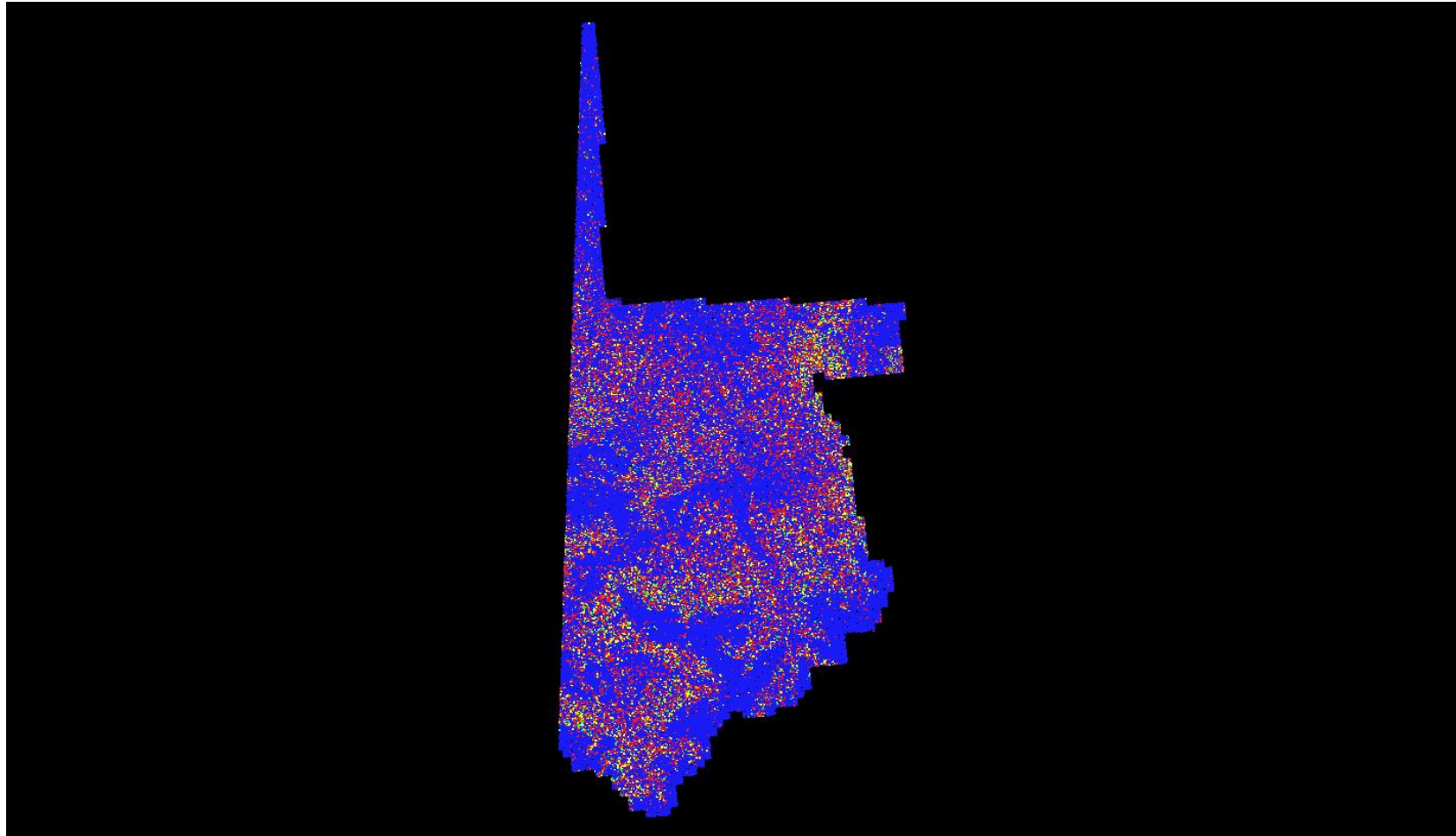


## *C-2 Report on Multiple Discrete Returns - All Returns*

The purpose of this section is to show a graphic of lidar data points colored by all returns. Blank flight lines can indicate a collection or processing problem dealing with lidar return attribute information.

[Data Source - D:\00\\_San\\_Miguel\Client\\_LAS\\_Swaths](#)

[Result Path - D:\00\\_San\\_Miguel\San\\_Luis\\_Juan\\_Miguel\\_B4\\_UTM13\C\\_2\ColorByReturns.jpg](#)



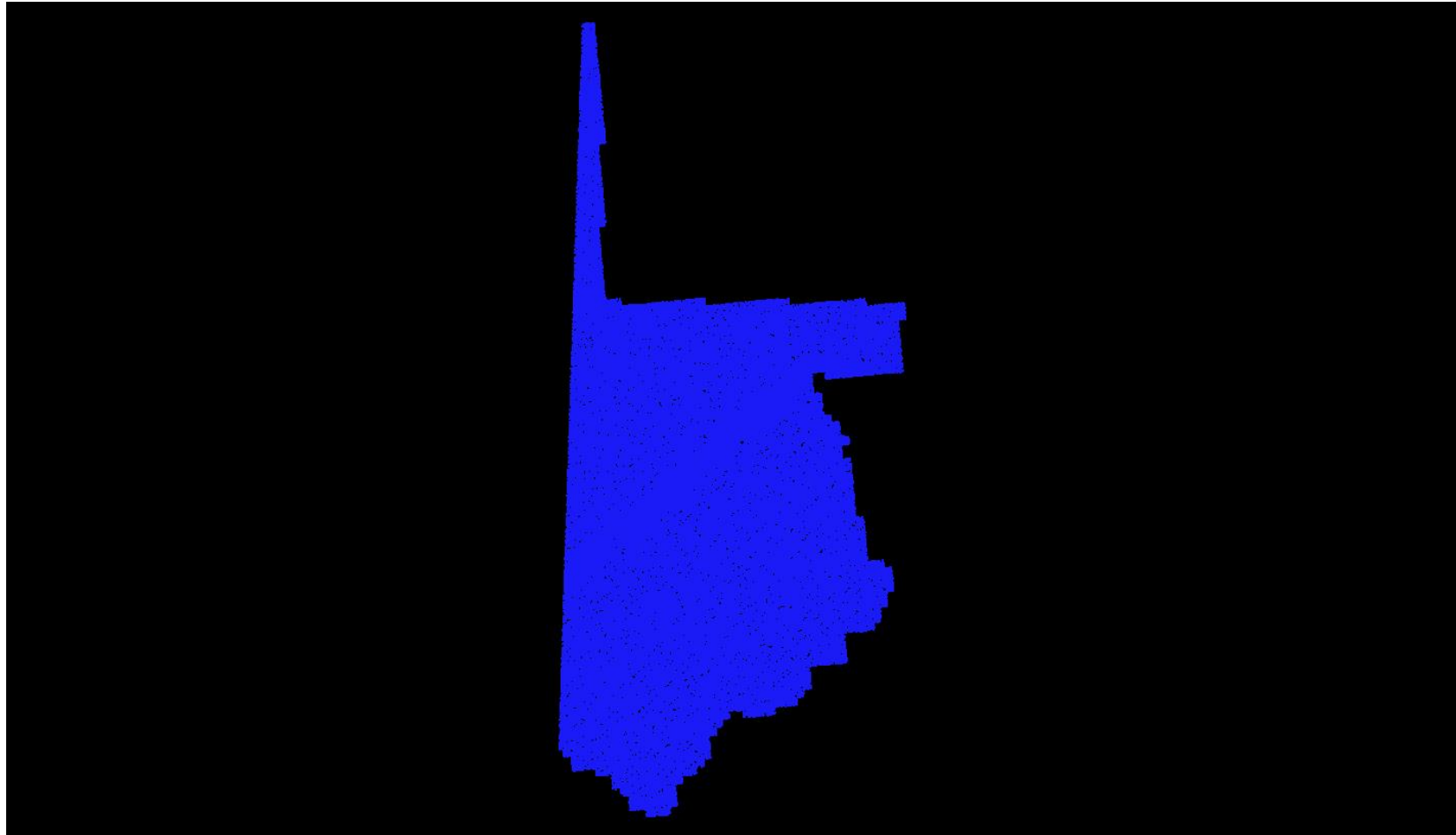
First      Second      Third      Fourth or other

## *C-2 Report on Multiple Discrete Returns - First Returns*

The purpose of this section is to show a graphic of lidar data points colored by first returns. Blank flight lines can indicate a collection or processing problem dealing with lidar return attribute information.

[Data Source - D:\00\\_San\\_Miguel\Client\\_LAS\\_Swaths](#)

[Result Path - D:\00\\_San\\_Miguel\San\\_Luis\\_Juan\\_Miguel\\_B4\\_UTM13\C\\_2\ColorByReturns\\_FirstReturns.jpg](#)

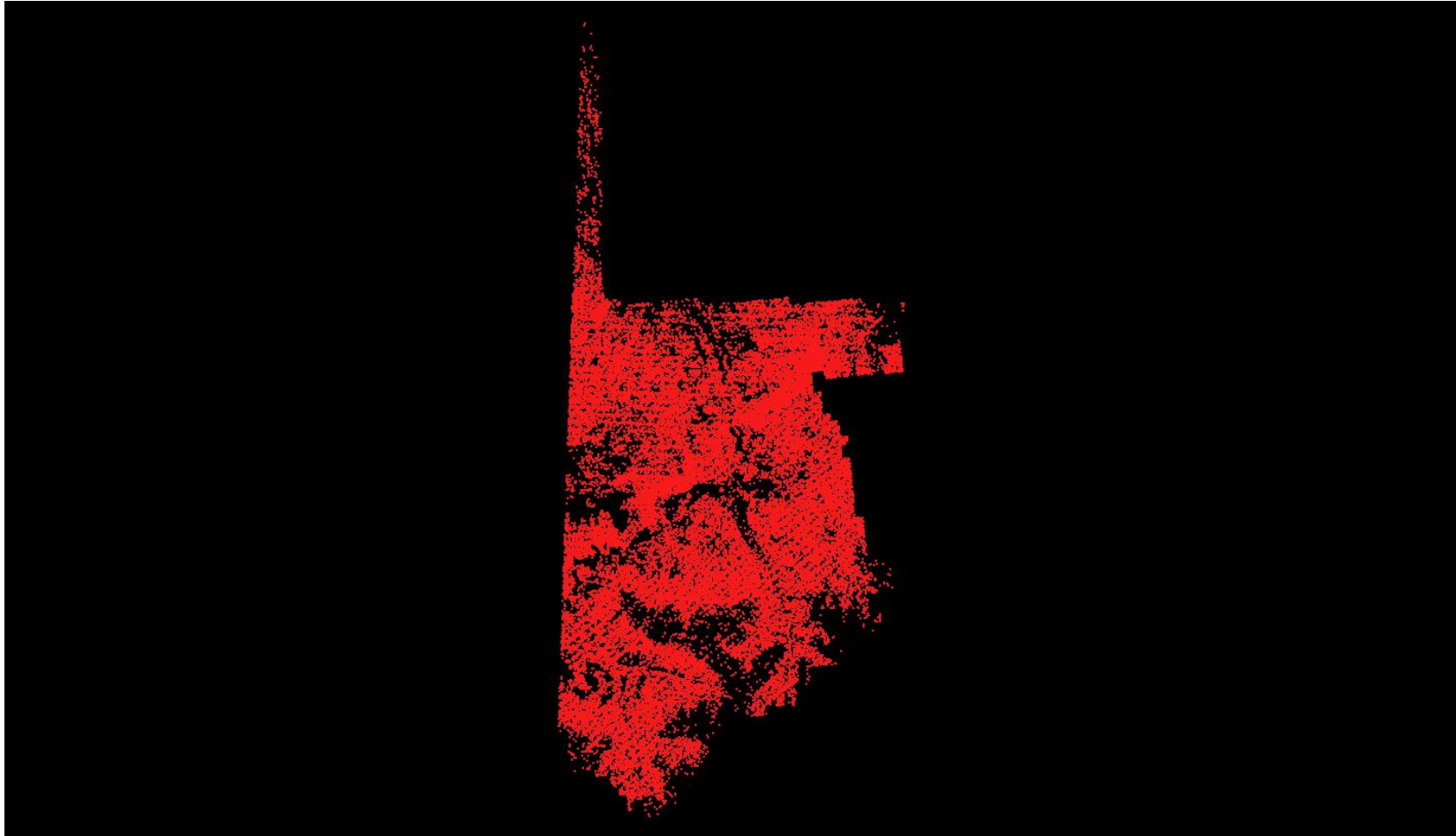


## *C-2 Report on Multiple Discrete Returns - Second Returns*

The purpose of this section is to show a graphic of lidar data points colored by second returns. Blank flight lines can indicate a collection or processing problem dealing with lidar return attribute information.

[Data Source - D:\00\\_San\\_Miguel\Client\\_LAS\\_Swaths](#)

[Result Path - D:\00\\_San\\_Miguel\San\\_Luis\\_Juan\\_Miguel\\_B4\\_UTM13\C\\_2\ColorByReturns\\_SecondReturns.jpg](#)

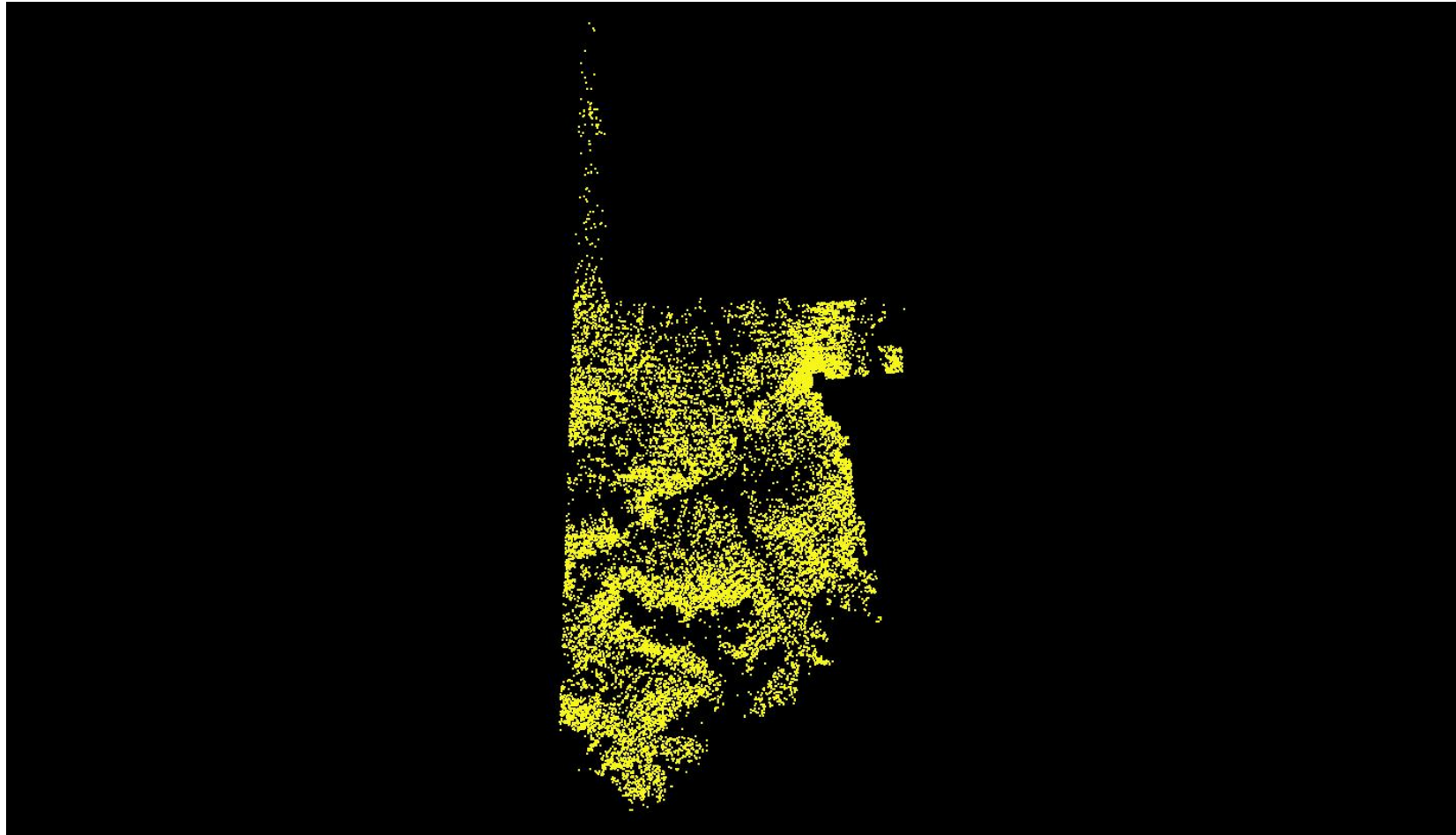


## *C-2 Report on Multiple Discrete Returns - Third Returns*

The purpose of this section is to show a graphic of lidar data points colored by third returns. Blank flight lines can indicate a collection or processing problem dealing with lidar return attribute information.

[Data Source - D:\00\\_San\\_Miguel\Client\\_LAS\\_Swaths](#)

[Result Path - D:\00\\_San\\_Miguel\San\\_Luis\\_Juan\\_Miguel\\_B4\\_UTM13\C\\_2\ColorByReturns\\_ThirdReturns.jpg](#)



## *C-2 Report on Multiple Discrete Returns - Other Returns*

The purpose of this section is to show a graphic of lidar data points colored by fourth or other returns. Blank flight lines can indicate a collection or processing problem dealing with lidar return attribute information.

[Data Source - D:\00\\_San\\_Miguel\Client\\_LAS\\_Swaths](#)

[Result Path - D:\00\\_San\\_Miguel\San\\_Luis\\_Juan\\_Miguel\\_B4\\_UTM13\C\\_2\ColorByReturns\\_OtherReturns.jpg](#)

