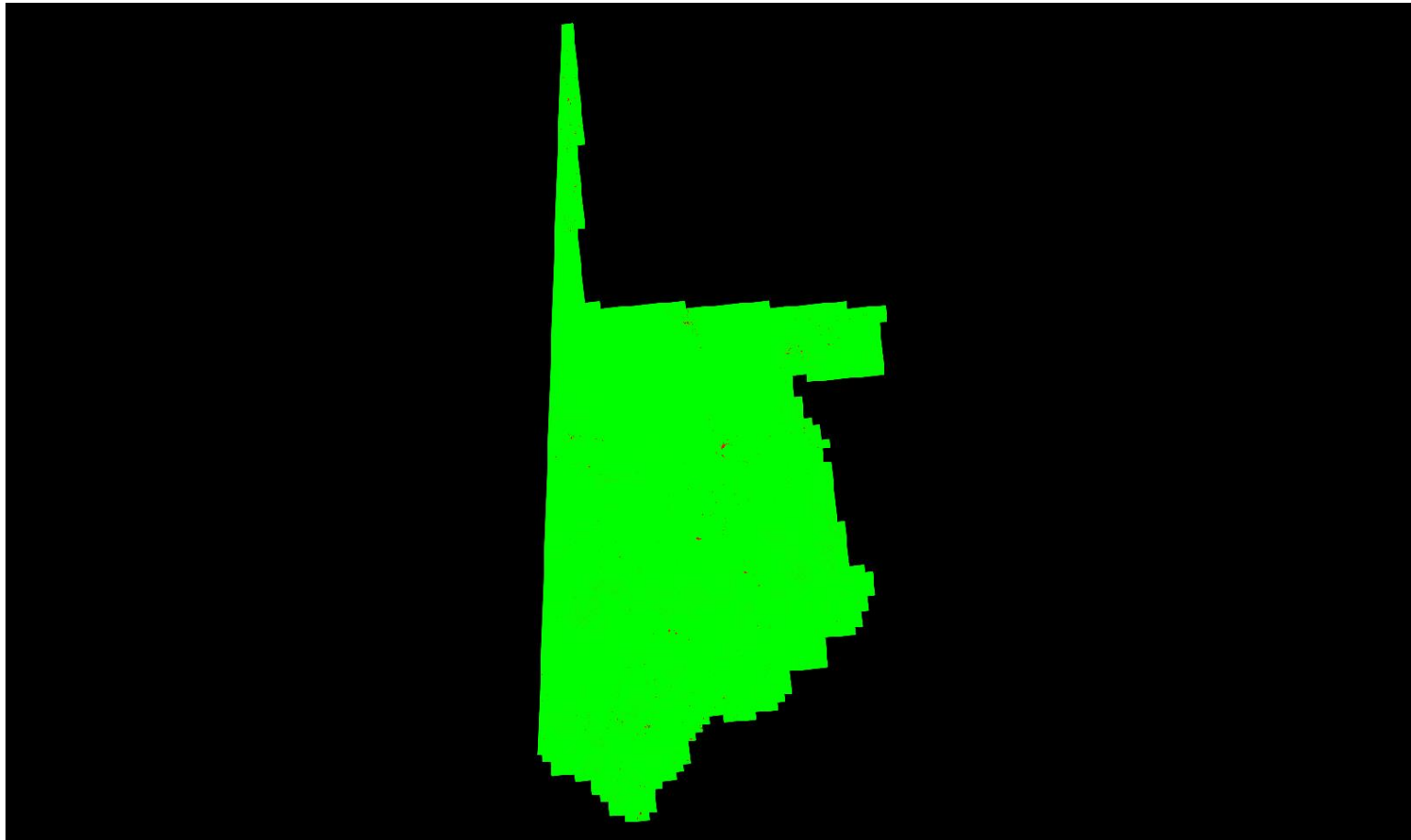


C-6.1 Report on Spatial Distribution and Regularity - continued

[Result Path - D:\00_San_Miguel\San_Luis_Juan_Miguel_B4_UTM13\C_6\SpatialDistribution_SingleFile.jp2](D:\00_San_Miguel\San_Luis_Juan_Miguel_B4_UTM13\C_6\SpatialDistribution_SingleFile.jp2)



Cell size: 1.420 Meter

■ Green: Cells containing at least one first return lidar point (number of cells = 2,373,601,904)

■ Red: Cells not containing at least one first return lidar point (number of cells = 4,424,112)

■ Background Color: Null data

Percentage of cells in the grid that contain at least one first return lidar point = 99.81% (Requirement is typically 90%)

See JPG2000 file for full resolution results