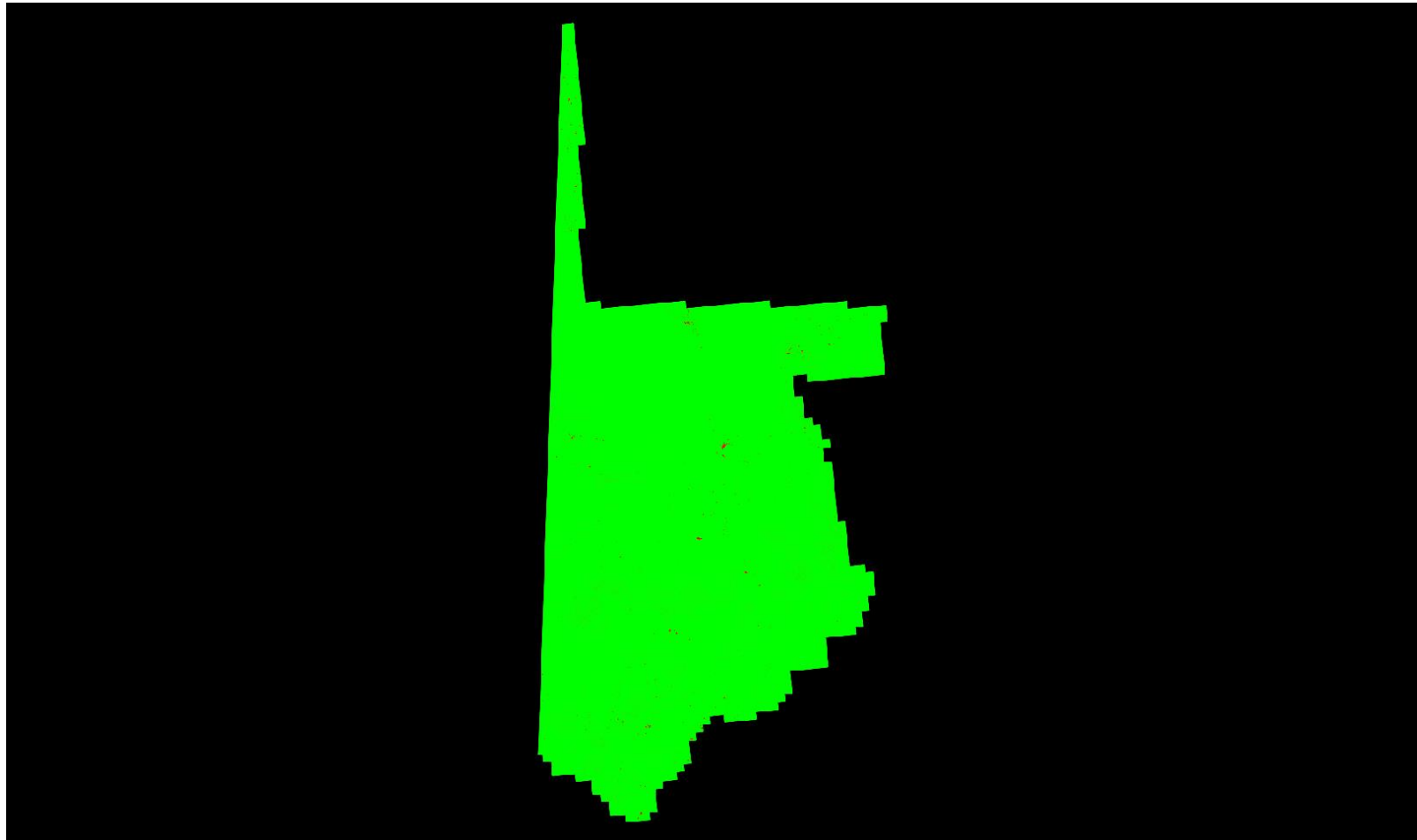


C-6.1 Report on Spatial Distribution and Regularity - continued



Cell size: 1.420 Meter

- Green: Cells containing at least one first return lidar point (number of cells = 2,373,601,904)
 - Red: Cells not containing at least one first return lidar point (number of cells = 4,424,112)
 - Black Background Color: Null data
- Percentage of cells in the grid that contain at least one first return lidar point = 99.81% (Requirement is typically 90%)
See JPG2000 file for full resolution results