



Delivery Lot Summary Report: Delivery Lot 5

May 29, 2015

USGS Contract: G10PC00026

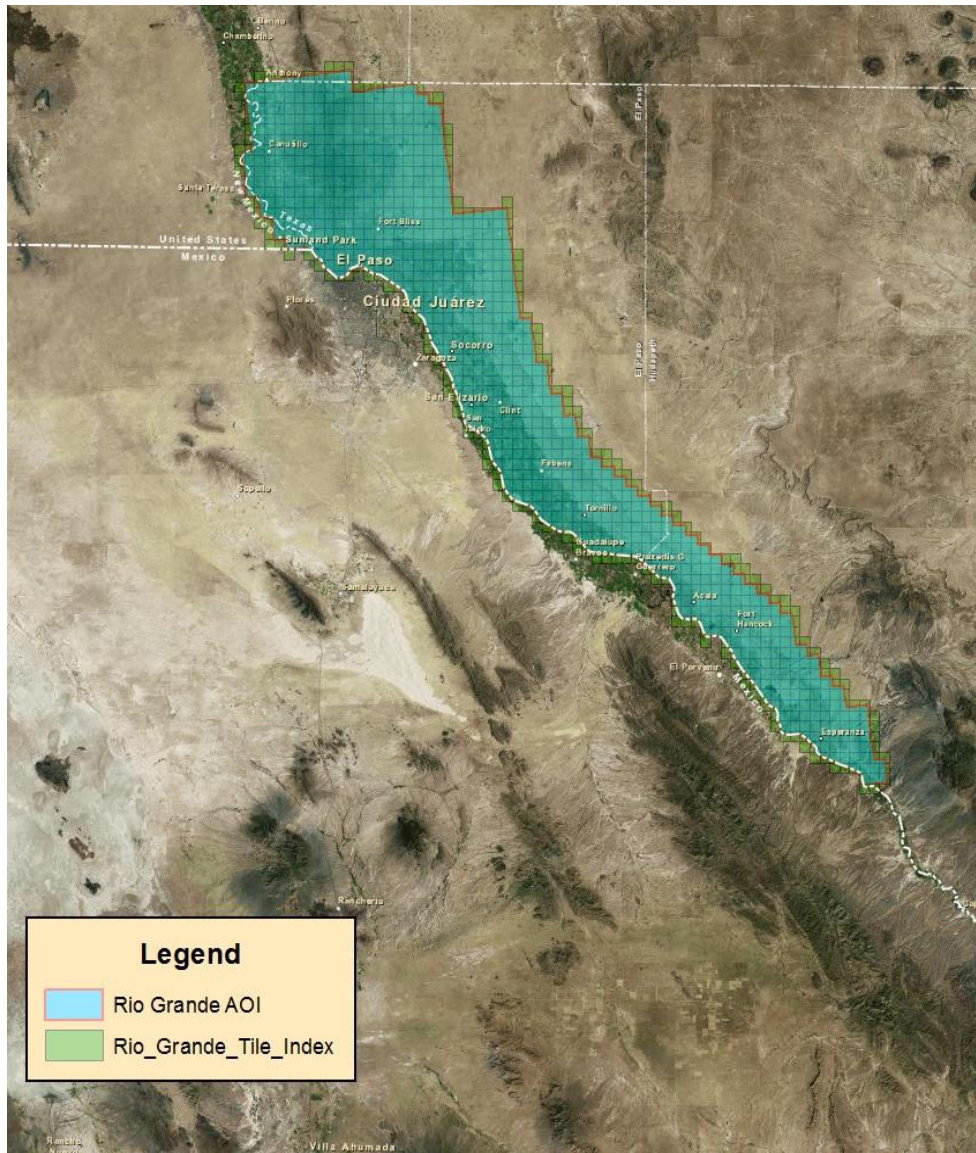
USGS Task Order: G14PD01082

Task Order Name: FEMA Region 6 TX – Rio Grande and Fort Whitman Watershed QL2 LiDAR

Contractor: GMR Aerial Surveys, dba Photo Science, A Quantum Spatial Company

The following is a summary description of the deliverables and other pertinent information that comprise the shipment of Delivery Lot 5 to USGS on May 29, 2015.

Rio Grande, TX Delivery Lot 5 Map:



**Task Order Spatial Reference System:**

- Horizontal: UTM 13N, NAD83 (2011), Meters
- Vertical: NAVD88, GEOID12a, Meters

Deliverables Summary:

1. C.1.d.(i) Raw Point Cloud Data: Included
 - LAS v1.2, Point Record Format 1 including File Source ID
 - Classification Schema:
 - (00) Code 0 – Created, never classified
 - Total Number of Files: 128
 - Total File Size: 350 GB
2. C.1.d.(ii) Classified Point Cloud: Included
 - LAS v1.2, Point Record Format 1 including File Source ID w/assigned value of 65,535
 - Classification Schema:
 - (01) Code 1 – Processed, but unclassified
 - (02) Code 2 – Bare-earth ground
 - (03) Code 7 – Noise
 - (04) Code 9 – Water
 - (05) Code 10 – Ignored Ground (Breakline Proximity)
 - (06) Code 17 – Overlap Default
 - (07) Code 18 – Overlap Ground
 - (08) Code 25 – Overlap Water
 - Total Number of Tiles: 995
 - Tile Dimensions: 1,500m x 1,500m
 - Total File Size: 277 GB
 - Delivery Lot 5 Tile Shape Files (Lot 5 Individual Tiles)
3. C.1.d.(iii) Bare Earth Surface (Raster DEM): Included
 - Format: ERDAS .IMG
 - Resolution: 1 meter grid cell size
 - Hydro Conditioning: Hydro Flattened
 - Total Number of Tiles: 995
 - Tile Dimensions: 1,500m x 1,500m (same used for Classified Point Cloud)
 - Total File Size: 7.92 GB
4. C.1.d.(iv) Control
 - Format: ERDAS .IMG
 - Resolution: 1 meter grid cell size



5. C.1.d.(v) Intensity Image
 - Format: GeoTIFF, with world files
 - Resolution: 1 meter pixel size
 - Scale: 8 bit, 256 color gray scale
 - Total Number of Tiles: 995
 - Tile Dimensions: 1,500m x 1,500m (same used for Classified Point Cloud)
 - Total File Size: 3.38 GB

6. C.1.d.(vi) Breaklines: Included
 - Format: ESRI Shapefile
 - Coverage: Lot 5 Continuous, Non-Tiled
 - Total File Size: 1.53 MB

7. C.1.d.(vii) Metadata: Included
 - Format: FGDC compliant, XML
 - File Types: Project, Deliverable product group (Classified .las, DEM, Breaklines, Flightline Swath & Intensity Images)

8. C.1.d.(viii) Project Report:
 - Delivery Lot Summary Report: Lot 5 Included
 - Overall Project Report: Included with Lot 5 Delivery

9. C.1.d.(ix) Acquisition Reports: Included
 - Acquisition Report included in Overall Project Report

10. Lot 5 QA & Accuracy Reporting
 - Bare Earth QC Checkpoints FVA Testing Results Derived from LAS (Excel File): Included
 - FVA, SVA & CVA Testing Results Derived from DEM (Excel File): Included
 - Calibration Control Point Testing Results (Excel File): Included
 - LAS Analysis (Excel File): Included
 - LAS Stats (Excel File): Included
 - DEM Stats (Excel File): Included

Delivery Lot Notes/Comments:

Delivery Lot 5 consists of all required deliverables as stated in the scope of work.