

General Information

Mission Information

Project name	13284-1806_20190326v2
Processing date	2019-05-01 23:36:09
Mission date	2019-03-26 15:02:09
Mission duration	04:41:22.000
Processing mode	IN-Fusion SmartBase
GPS Station	ASB

Rover Hardware Information

Product	POS AV 610 VER6 HW2.5-12
Serial number	S/N8223
IMU type	57
Receiver type	BD982
Antenna type	AV37

Project File List

Rover Data Files

File name	File type
190326_142908_INS-GPS_1.raw	POS Data

Input Files

File Name	File type
igl20461.sp3	GLONASS Precise Ephemeris
igl20462.sp3	GLONASS Precise Ephemeris
igl20463.sp3	GLONASS Precise Ephemeris
igs20461.sp3	GPS Precise Ephemeris
igs20462.sp3	GPS Precise Ephemeris
igs20463.sp3	GPS Precise Ephemeris
avon085000.19o.gps+glo.rnx2	GNSS SingleBase
bkv1085000.19o.gps+glo.rnx2	GNSS SingleBase
flcc085000.19o.gps+glo.rnx2	GNSS SingleBase
fld7085000.19o.gps+glo.rnx2	GNSS SingleBase
fldc085000.19o.gps+glo.rnx2	GNSS SingleBase
fleu085000.19o.gps+glo.rnx2	GNSS SingleBase
flwd085000.19o.gps+glo.rnx2	GNSS SingleBase
orl1085000.19o.gps+glo.rnx2	GNSS SingleBase
snfd085000.19o.gps+glo.rnx2	GNSS SingleBase
wach085000.19o.gps+glo.rnx2	GNSS SingleBase
brtw085000.19o.gps+glo.rnx2	GNSS SingleBase
flks085000.19o.gps+glo.rnx2	GNSS SingleBase
polk085000.19o.gps+glo.rnx2	GNSS SingleBase
zefr085000.19o.gps+glo.rnx2	GNSS SingleBase
Ephm0850.19g	GLONASS Broadcast Ephemeris
Ephm0850.19n	GPS Broadcast Ephemeris
igl20461.sp3	GLONASS Precise Ephemeris
igl20462.sp3	GLONASS Precise Ephemeris
igl20463.sp3	GLONASS Precise Ephemeris
igs20461.sp3	GPS Precise Ephemeris
igs20462.sp3	GPS Precise Ephemeris
igs20463.sp3	GPS Precise Ephemeris

Output Files

Filename	File type
sbet_Mission 1.out	SBET Trajectory File

Rover Data Summary

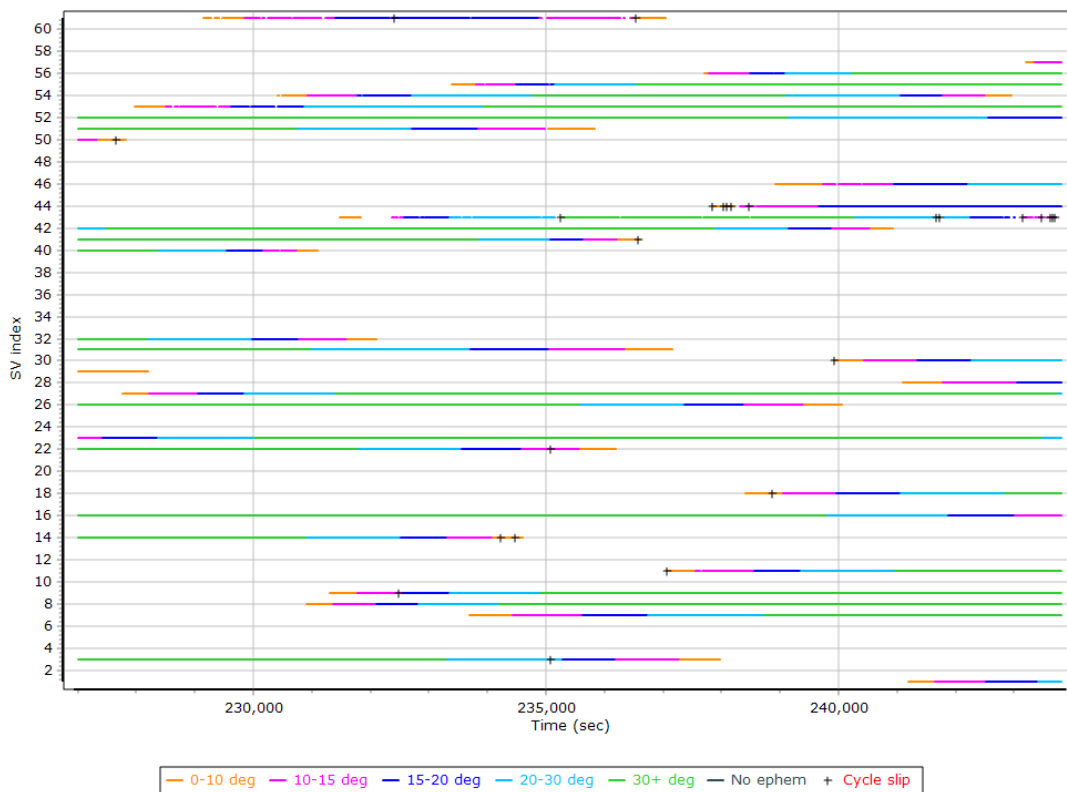
First raw data file	190326_142908_INS-GPS_1.raw		
Last raw data file	190326_142908_INS-GPS_1.raw		
Start GPS week	2046		
Start time	226928.639 (3/26/2019 3:01:50 PM)		
End time	243811.511 (3/26/2019 7:43:13 PM)		
Start of fine alignment	226948.153 (3/26/2019 3:02:10 PM)		
Available subsystems	Primary GNSS, IMU		
POS Event Input	None		
Correction data	None		
IMU Installation Lever Arms & Mounting Angles			
Reference to IMU lever arm [m]	0.000	0.000	0.000
Reference to IMU mounting angles [deg]	0.000	0.000	0.000
Reference to Primary GNSS lever arm [m]	0.080	-0.198	-0.950
Reference to Primary GNSS lever arm std dev [m]	-1.000		
Aircraft to Reference mounting angles [deg]	0.000	0.000	0.000

Raw Data QC

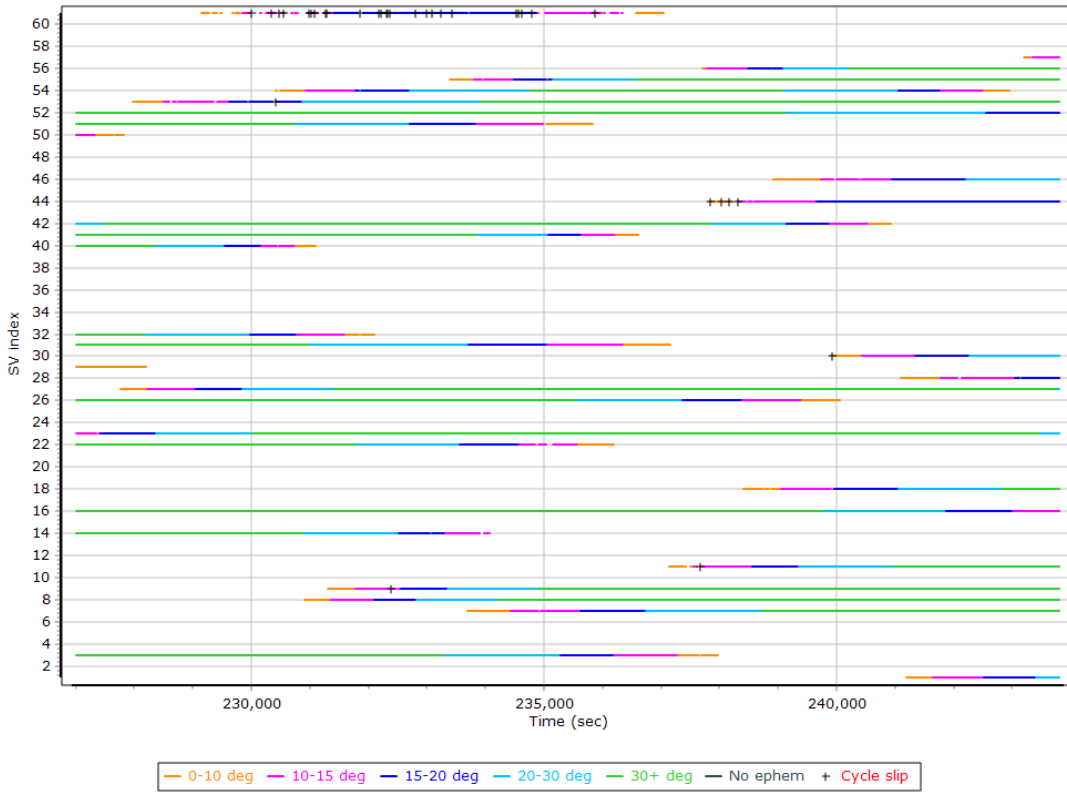
Raw IMU Import QC Summary

IMU data input file	imu_Mission 1.dat
IMU data check log file	imudt_Mission 1.log
IMU Records Processed	3376000
Termination Status	Normal
IMU Anomalies	0

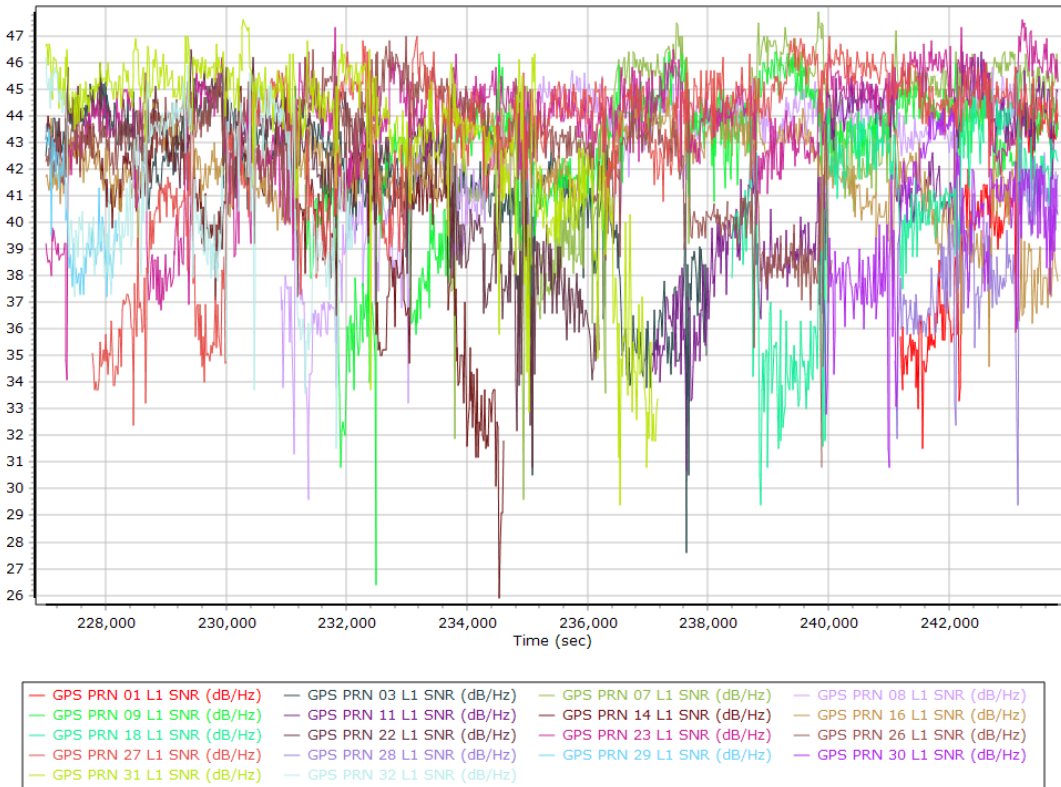
L1 Satellite Lock/Elevation



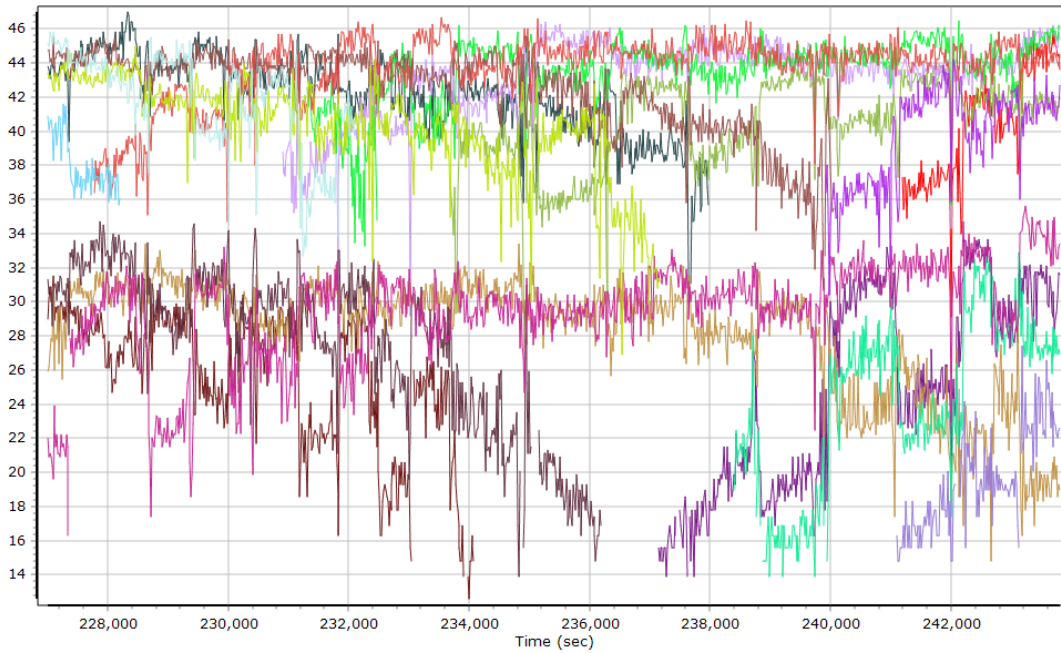
L2 Satellite Lock/Elevation



GPS L1 SNR

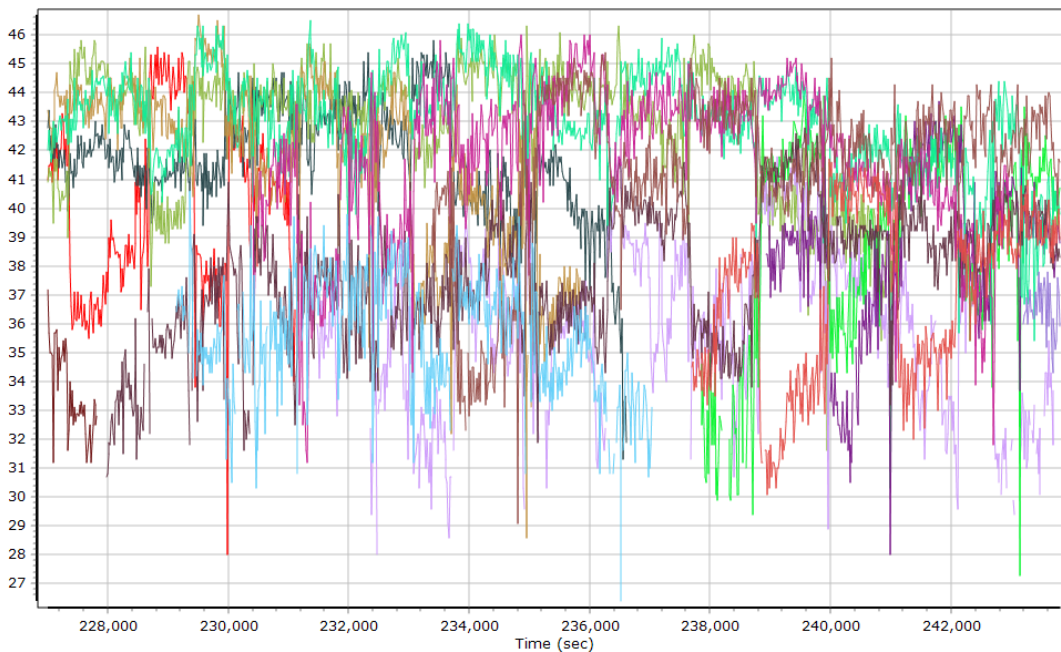


GPS L2 SNR



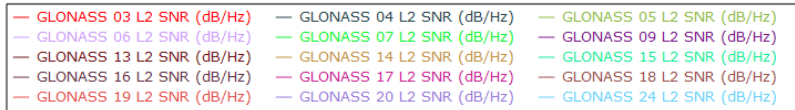
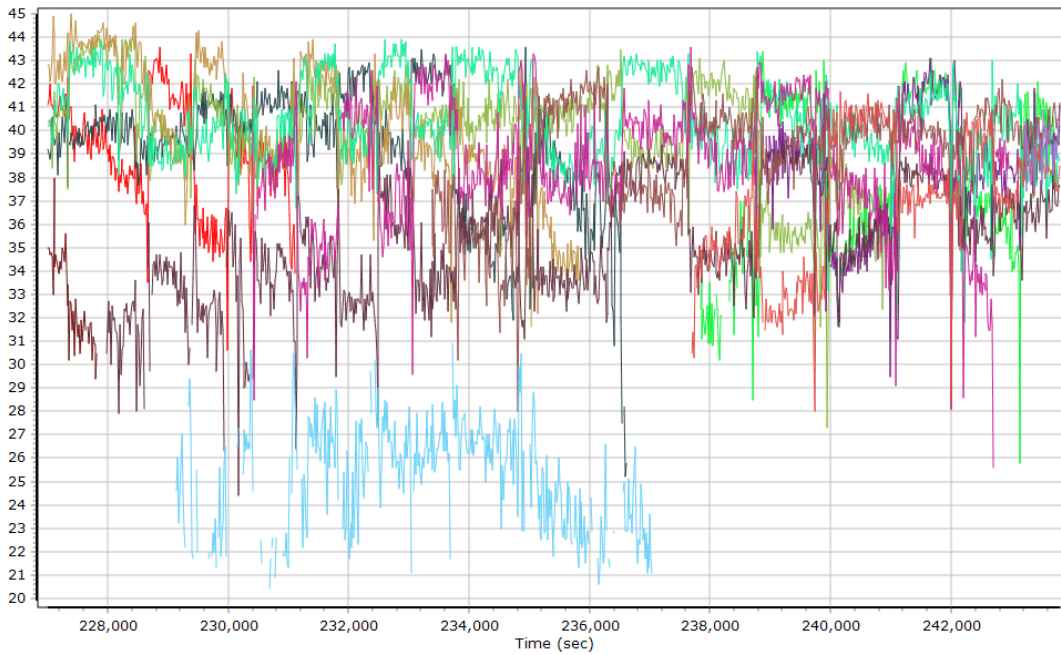
- | | | | |
|---------------------------|---------------------------|---------------------------|---------------------------|
| GPS PRN 01 L2 SNR (dB/Hz) | GPS PRN 03 L2 SNR (dB/Hz) | GPS PRN 07 L2 SNR (dB/Hz) | GPS PRN 08 L2 SNR (dB/Hz) |
| GPS PRN 09 L2 SNR (dB/Hz) | GPS PRN 11 L2 SNR (dB/Hz) | GPS PRN 14 L2 SNR (dB/Hz) | GPS PRN 16 L2 SNR (dB/Hz) |
| GPS PRN 18 L2 SNR (dB/Hz) | GPS PRN 22 L2 SNR (dB/Hz) | GPS PRN 23 L2 SNR (dB/Hz) | GPS PRN 26 L2 SNR (dB/Hz) |
| GPS PRN 27 L2 SNR (dB/Hz) | GPS PRN 28 L2 SNR (dB/Hz) | GPS PRN 29 L2 SNR (dB/Hz) | GPS PRN 30 L2 SNR (dB/Hz) |
| GPS PRN 31 L2 SNR (dB/Hz) | GPS PRN 32 L2 SNR (dB/Hz) | | |

GLONASS L1 SNR

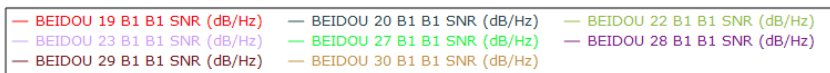
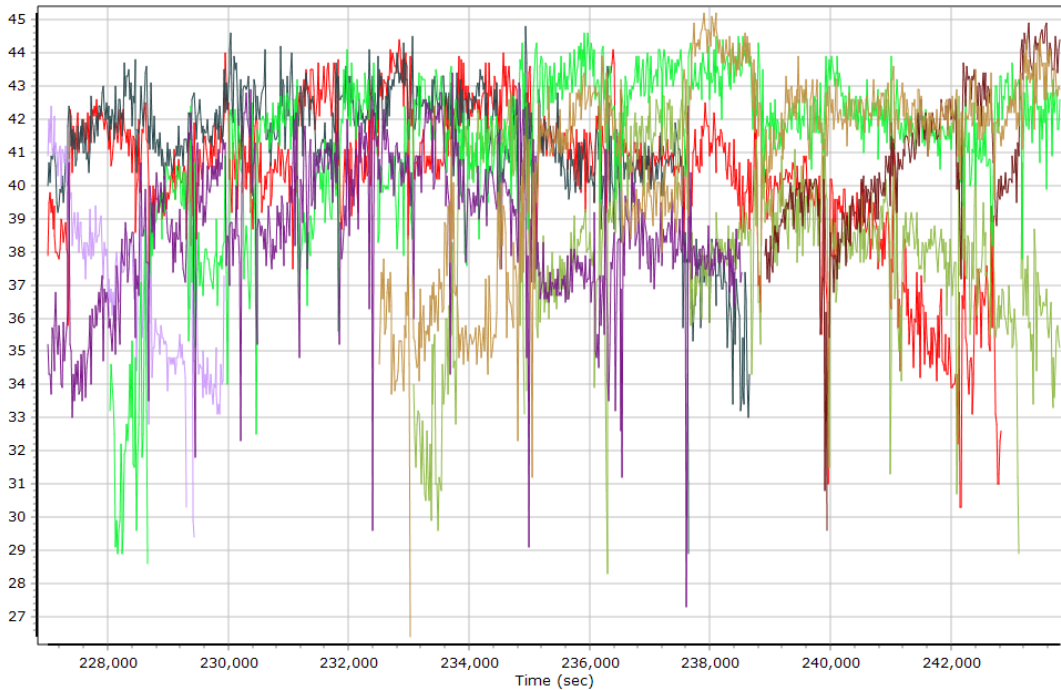


- | | | |
|---------------------------|---------------------------|---------------------------|
| GLONASS 03 L1 SNR (dB/Hz) | GLONASS 04 L1 SNR (dB/Hz) | GLONASS 05 L1 SNR (dB/Hz) |
| GLONASS 06 L1 SNR (dB/Hz) | GLONASS 07 L1 SNR (dB/Hz) | GLONASS 09 L1 SNR (dB/Hz) |
| GLONASS 13 L1 SNR (dB/Hz) | GLONASS 14 L1 SNR (dB/Hz) | GLONASS 15 L1 SNR (dB/Hz) |
| GLONASS 16 L1 SNR (dB/Hz) | GLONASS 17 L1 SNR (dB/Hz) | GLONASS 18 L1 SNR (dB/Hz) |
| GLONASS 19 L1 SNR (dB/Hz) | GLONASS 20 L1 SNR (dB/Hz) | GLONASS 24 L1 SNR (dB/Hz) |

GLONASS L2 SNR

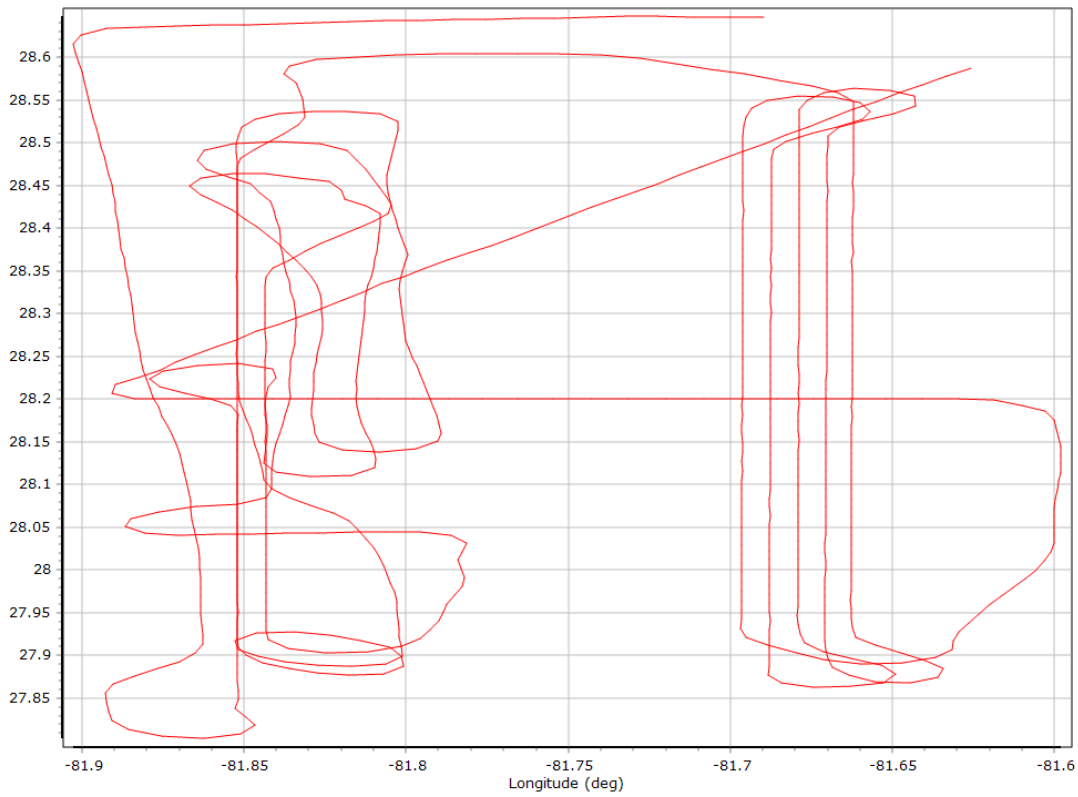


BEIDOU SNR

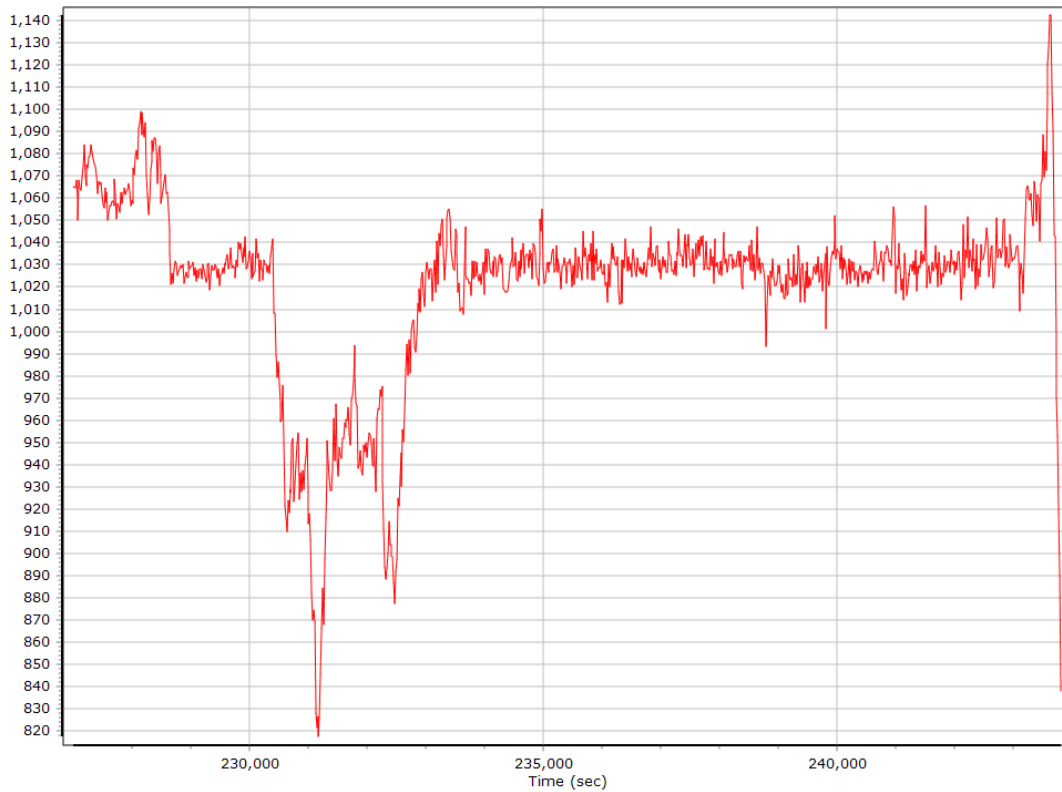


Trajectory Information

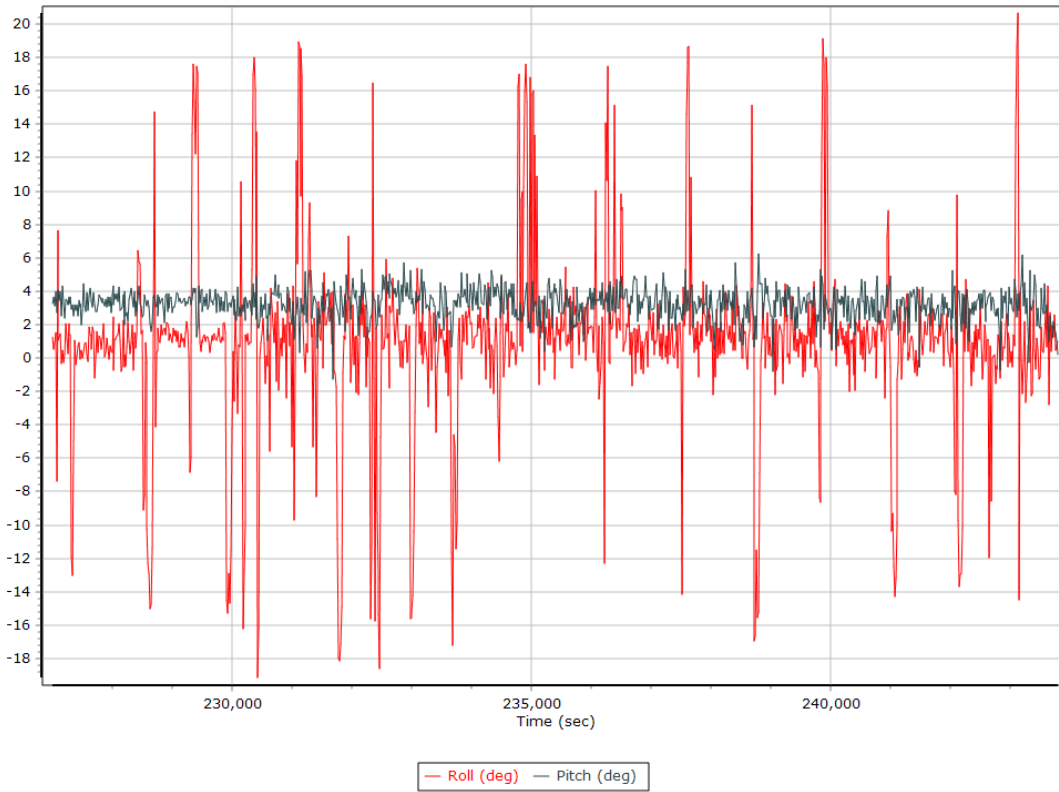
Top View



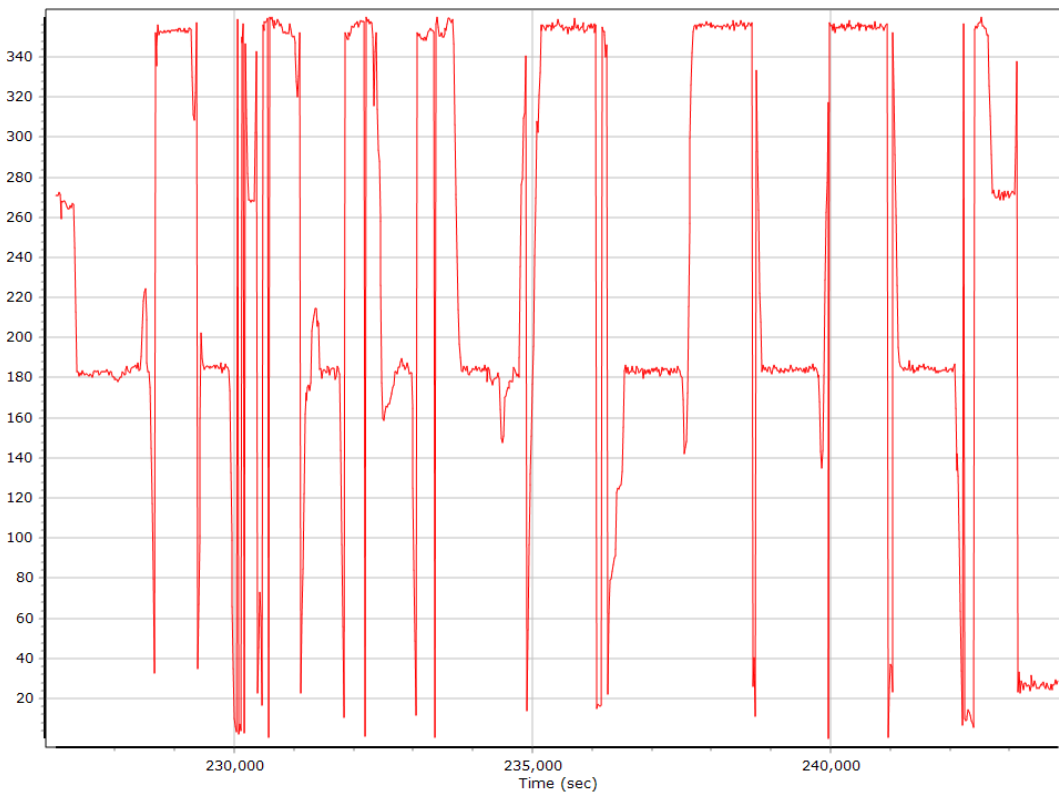
Altitude



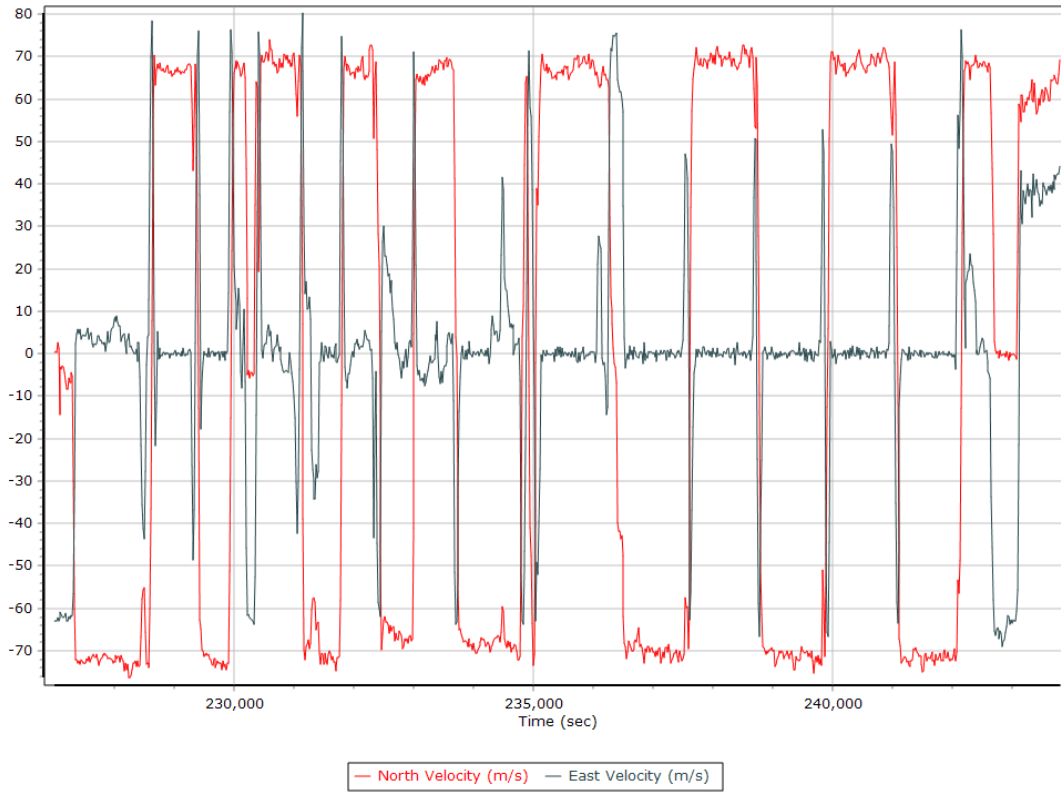
Roll/Pitch



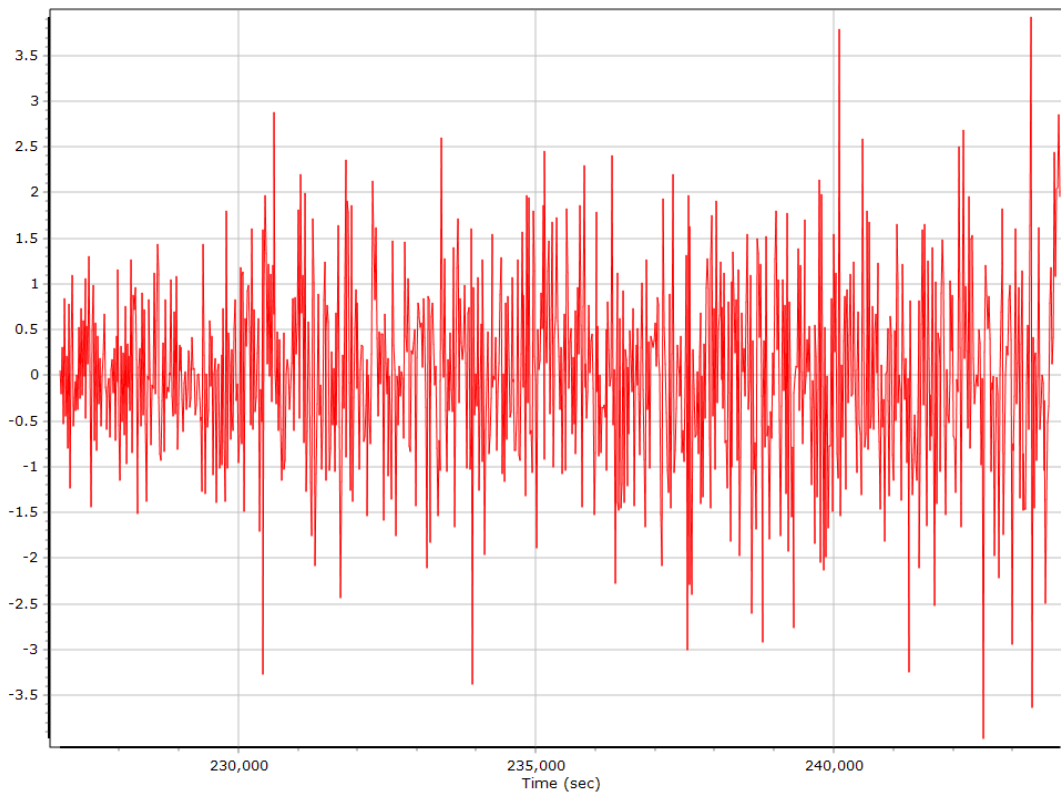
Heading



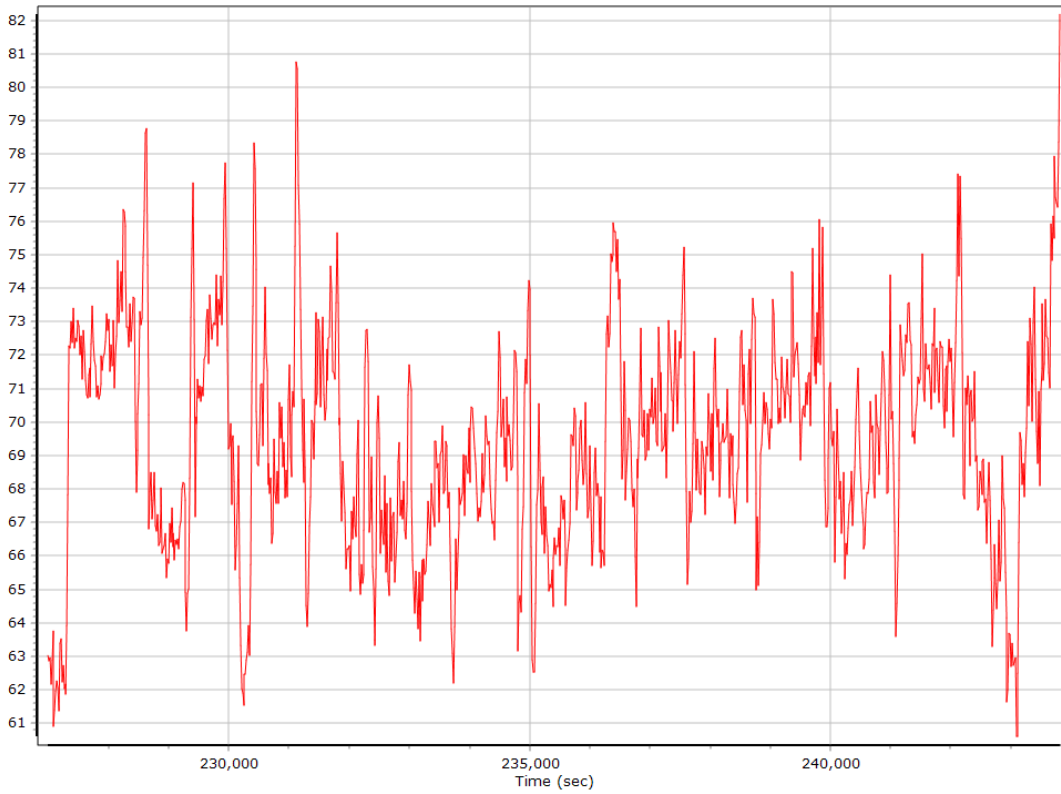
North/East Velocity



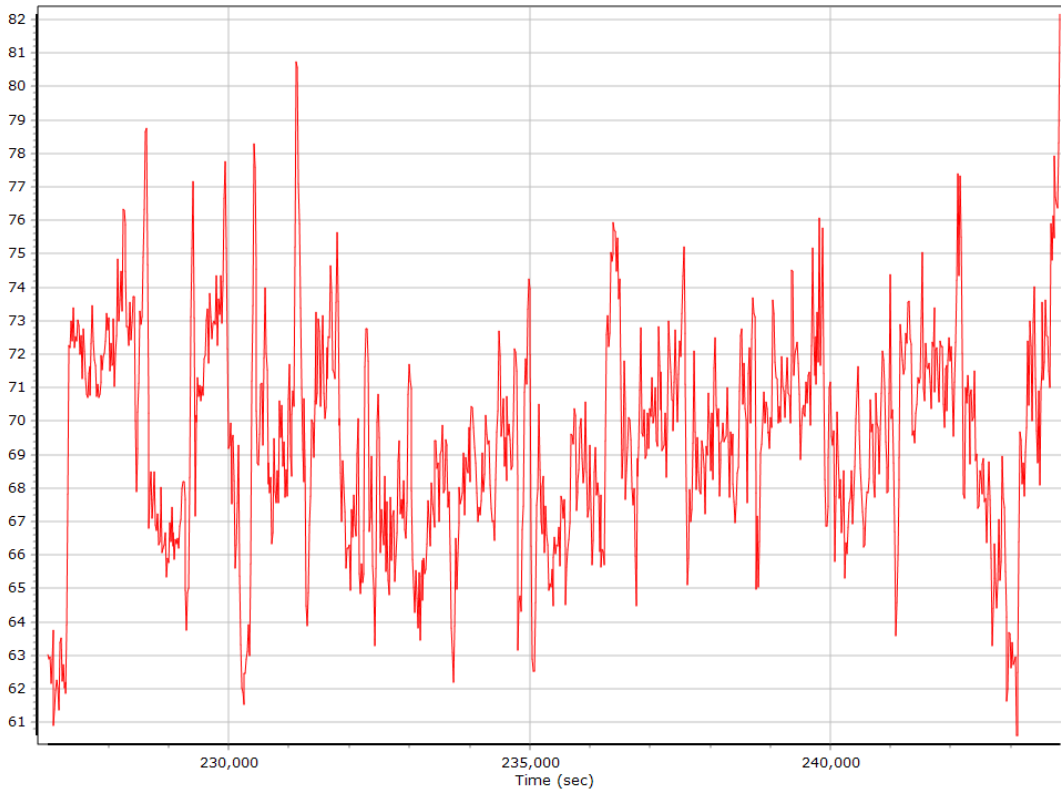
Down Velocity



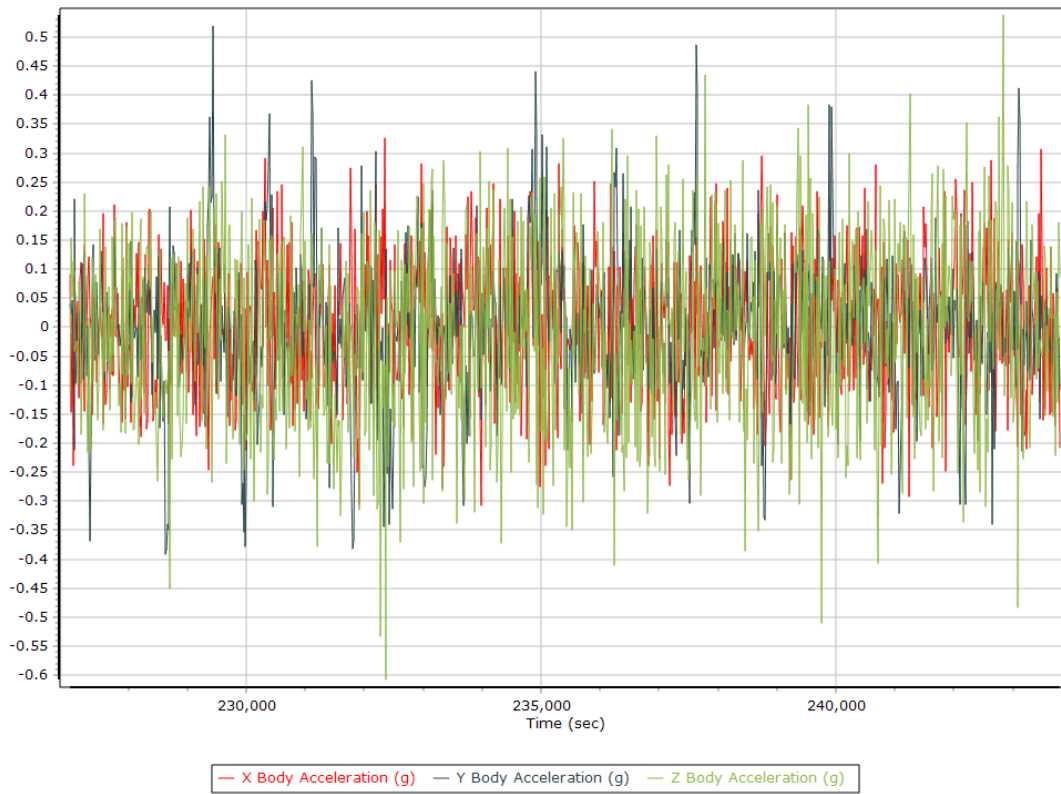
Total Speed



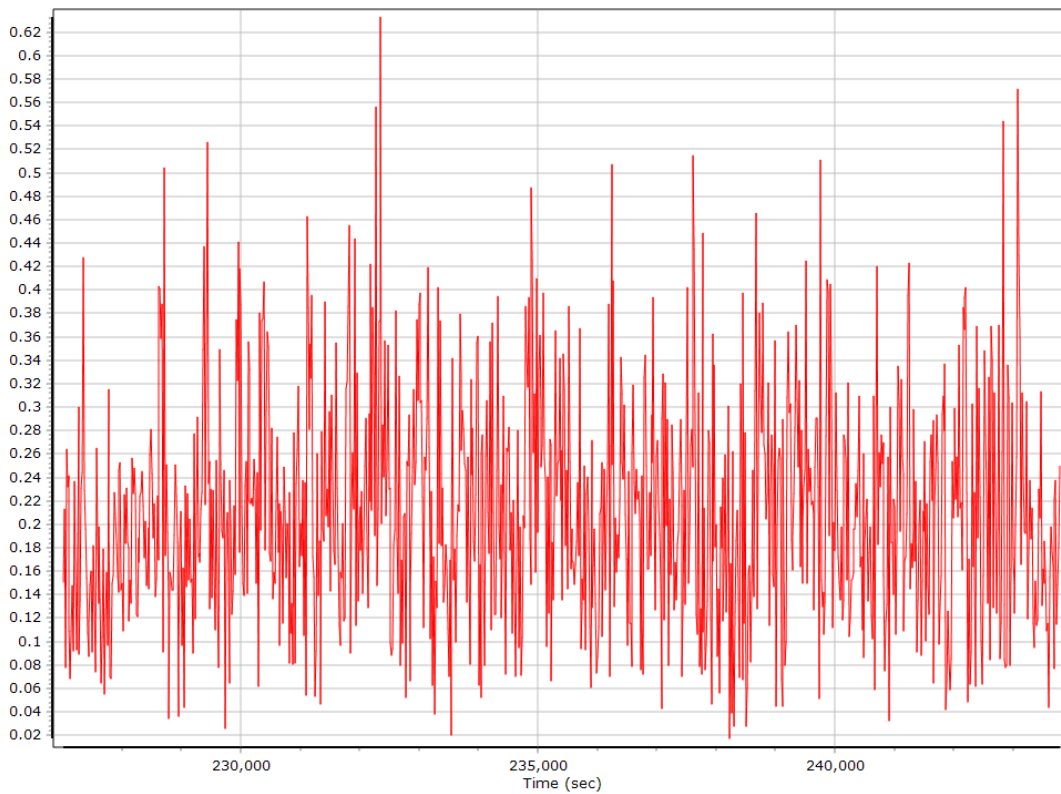
Ground Speed



Body Acceleration



Total Body Acceleration



Body Angular Rate



SmartBase Processing Summary

Smart Select Options

Archive enabled	False
User database enabled	False
Include high-rate data sites	False
Target GNSS Selection	GNSS

Basestation Selection

Date	ID	Dist	Data Type	Rate	Service	Database	Status
------	----	------	-----------	------	---------	----------	--------

SmartBase Results

SmartBase status	
Primary station Id	
Primary station data rate [sec]	0.0
VRS/ASB generation rate [sec]	0.0
VRS/ASB timespan	
Number of reference stations	0
Primary station GPS measurement usage [%]	0.0
Average number of satellites per epoch	0.0
Max number of GPS stations used	0
Min number of GPS stations used	0
Total full data gap [sec]	0
Total individual satellite data gap [sec]	0
GPS precise vs. broadcast ephemeris used	0.0 % / 0.0 %
Termination Status	

SmartBase Quality Check

GNSS QC

GNSS QC Statistics

Statistics	Min	Max	Mean
Baseline length [km]	2.45	49.84	
Number of GPS SV	6	11	9
Number of GLONASS SV	4	7	5
Number of QZSS SV	0	0	0
Number of BEIDOU SV	0	0	0
Total number of SV	10	17	14
PDOP	1.20	3.63	1.55
QC Solution Gaps	0.00	0.00	
Solution Type	Fixed	Float	No solution
Epoch (s)	16838.00	0.00	0.00
Percentage	100.00	0.00	0.00

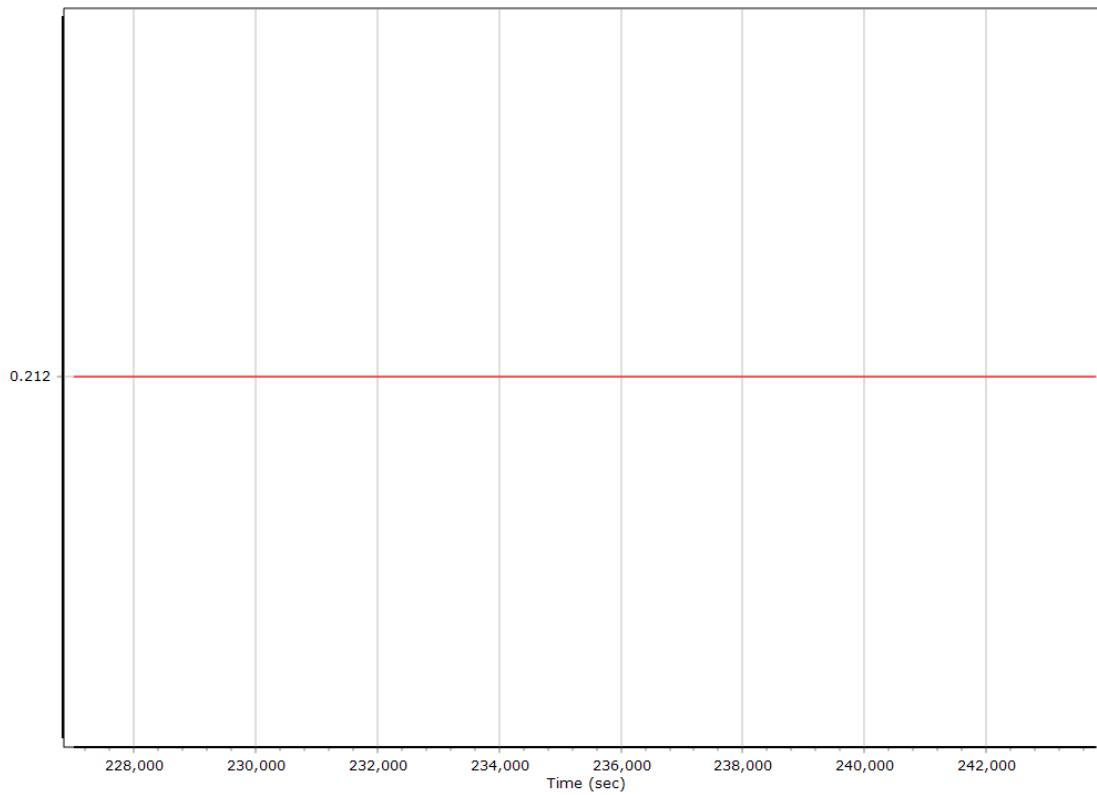
GNSS-Inertial Processor Configuration

Processing mode	IN-Fusion SmartBase		
Stabilized mount	False		
Base station	ASB		
Processing start time	226929.000 (3/26/2019 3:01:51 PM)		
Processing end time	243811.000 (3/26/2019 7:43:13 PM)		
Initial attitude source	Real-Time VNAV/RNAV Attitude		
IMU Sensor Context	Processing with Onboard IMU		
Reference to IMU lever arm [m]	0.000	0.000	0.000
Reference to IMU mounting angles [deg]	0.000	0.000	0.000
Reference to Primary GNSS lever arm [m]	0.212	0.092	-0.769
Reference to Primary GNSS lever arm std dev [m]	0.030	0.030	0.030
Aircraft to Reference mounting angles [deg]	0.000	0.000	0.000

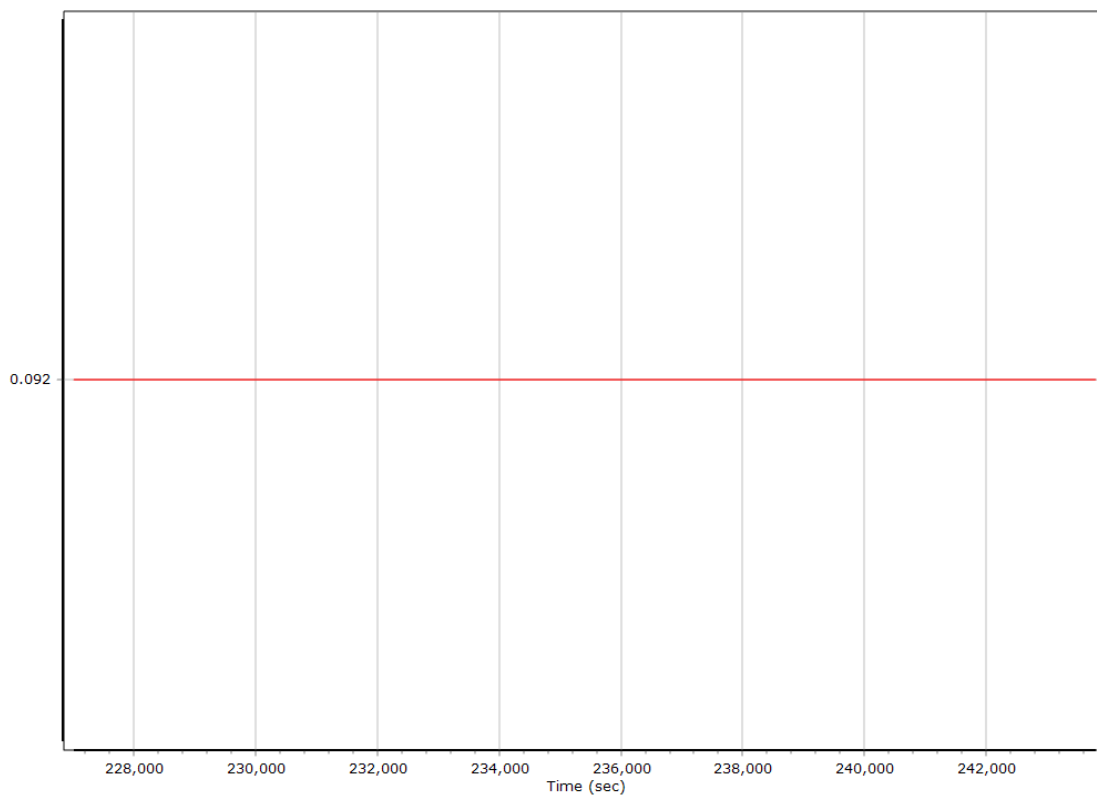
Calibrated Installation Parameters

Reference-Primary GNSS Lever Arm

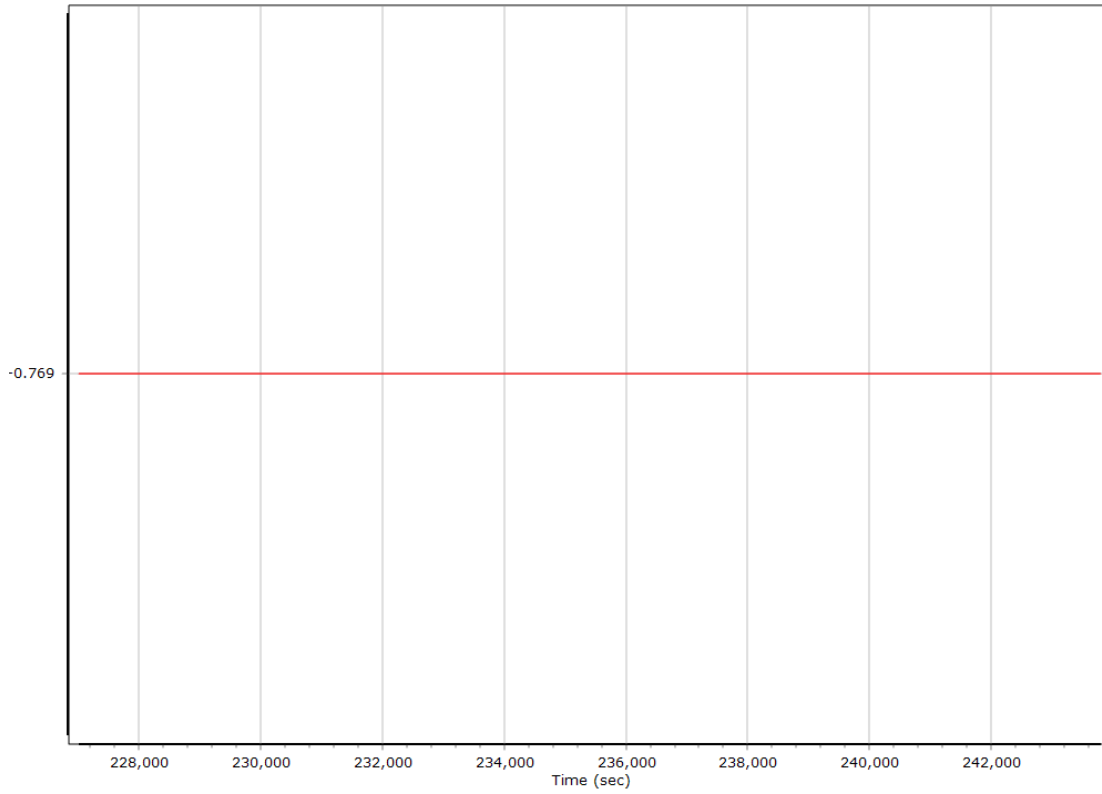
X Reference-Primary GNSS Lever Arm (m)



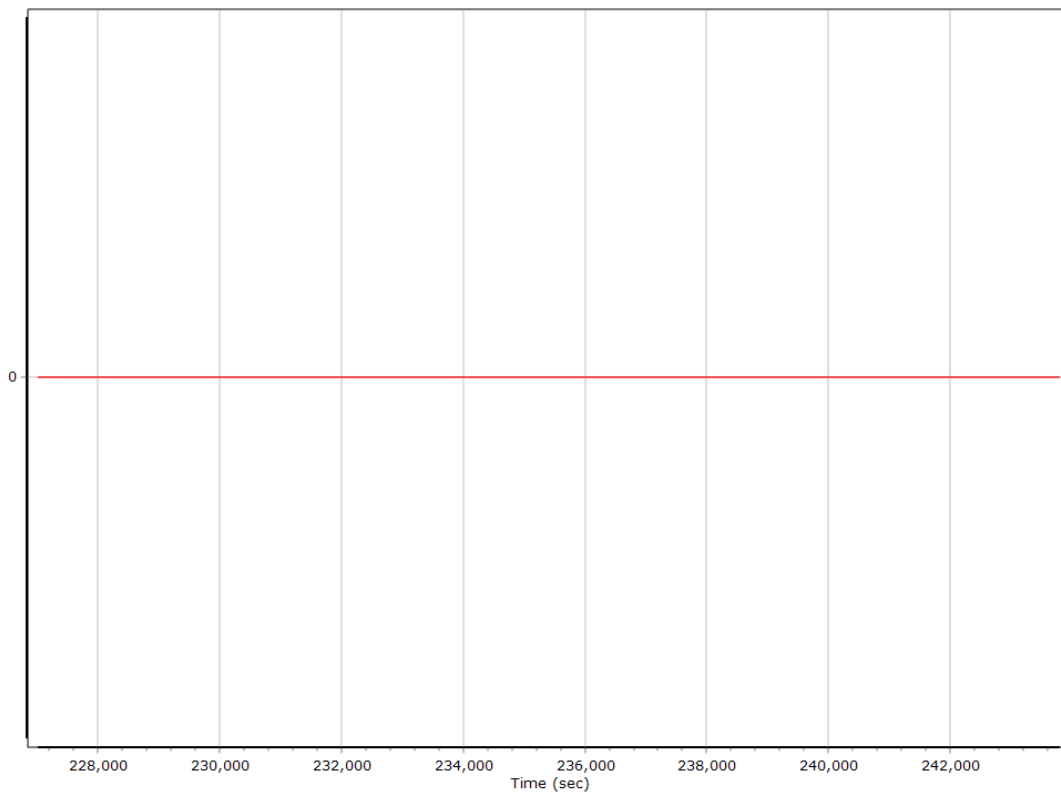
Y Reference-Primary GNSS Lever Arm (m)



Z Reference-Primary GNSS Lever Arm (m)



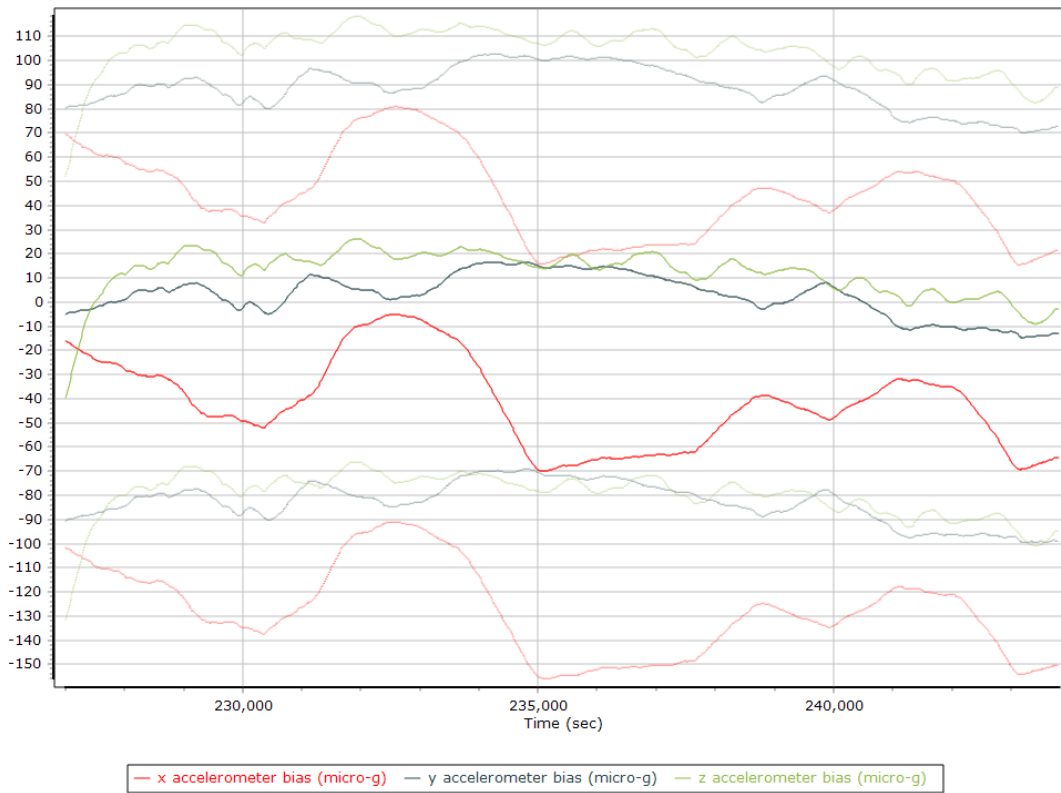
Reference-Primary GNSS Lever Arm Figure of Merit



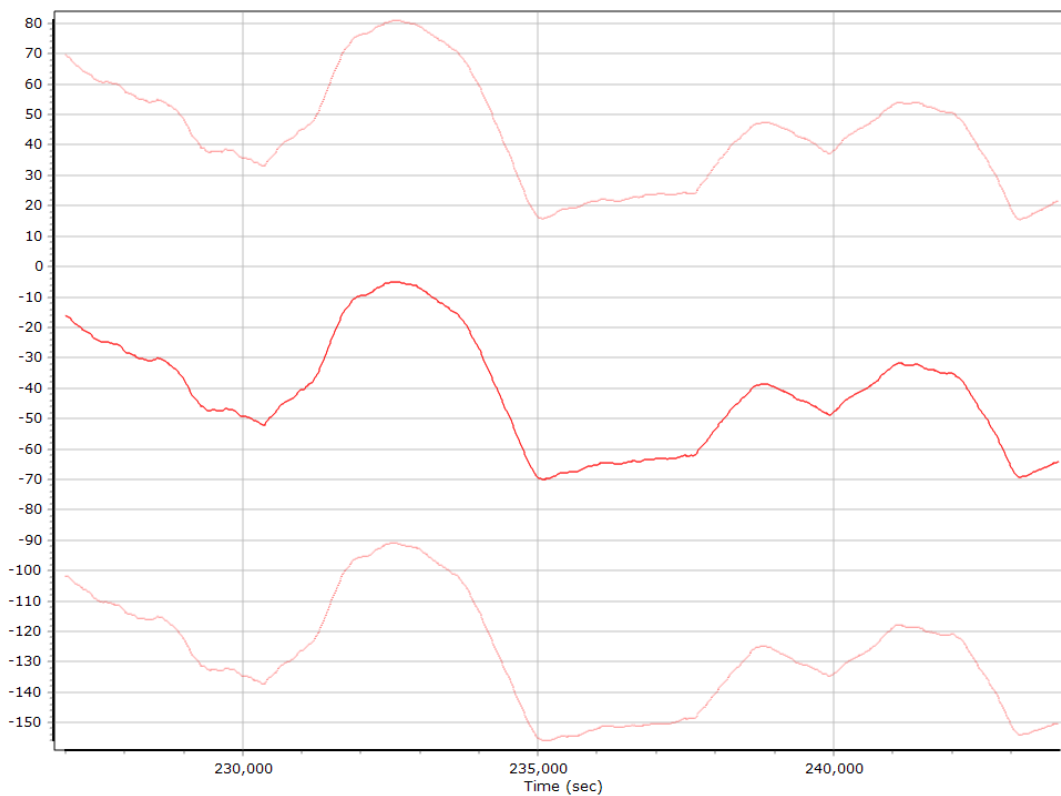
Smoothed IN-Fusion QC

Smoothed Estimated Errors, Reference Frame

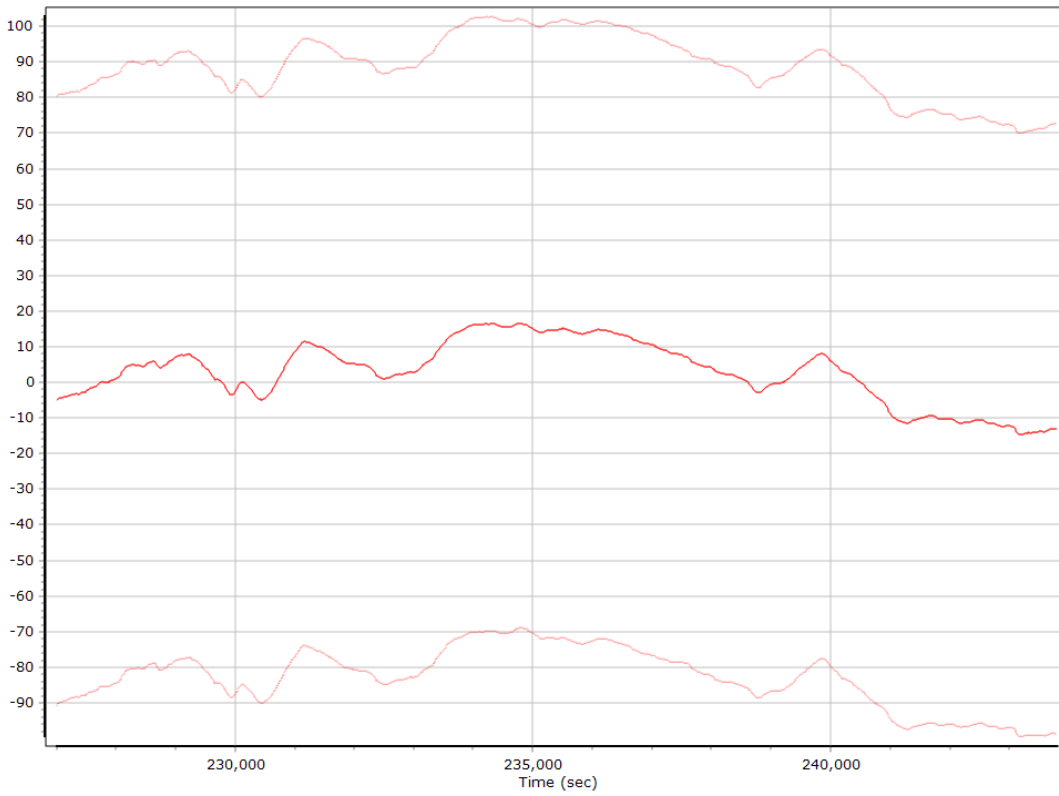
Accelerometer Bias (micro-g)



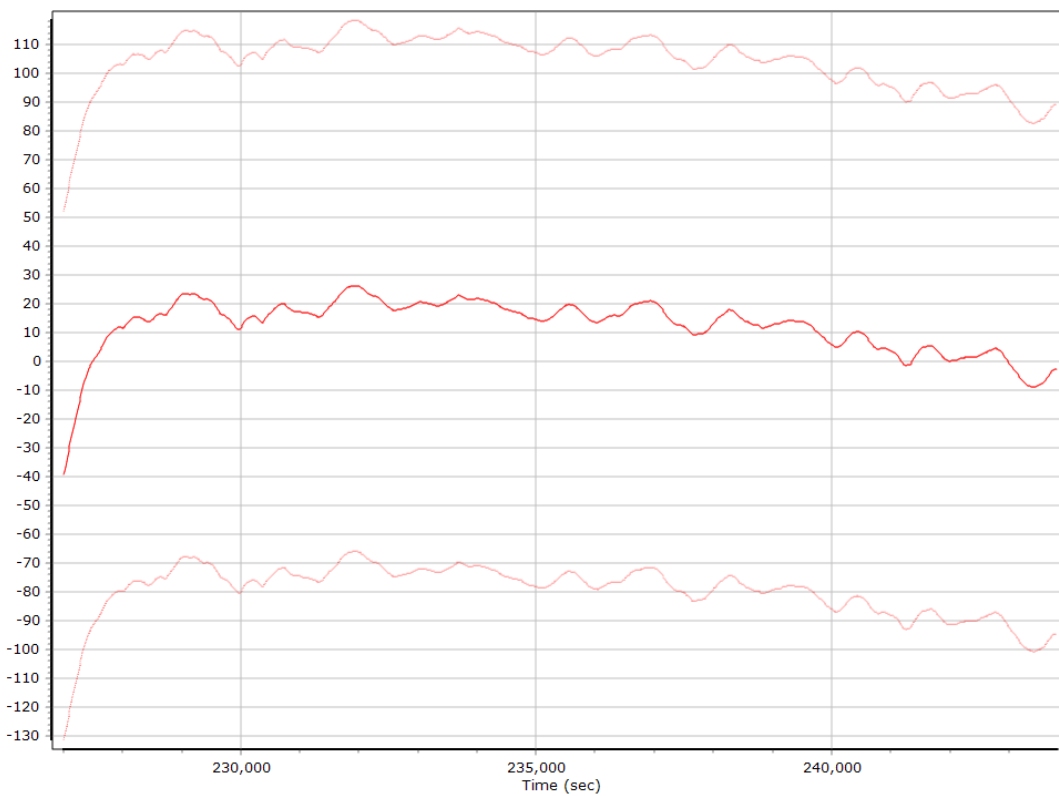
X Accelerometer Bias (micro-g)



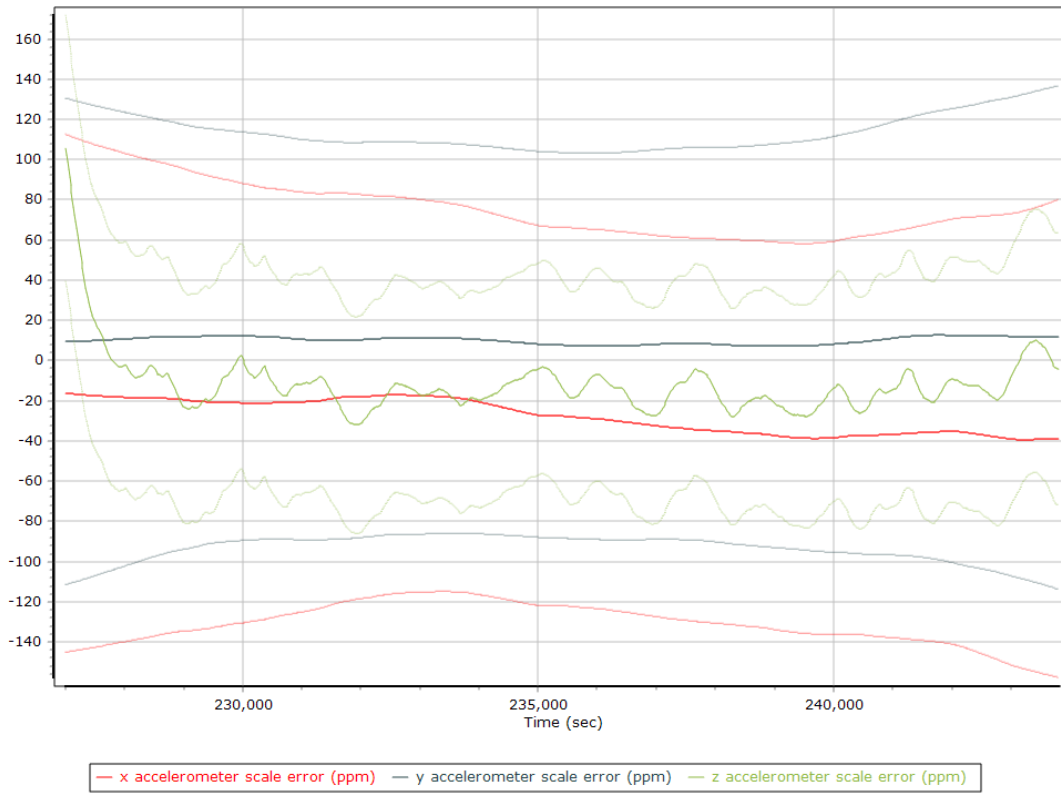
Y Accelerometer Bias (micro-g)



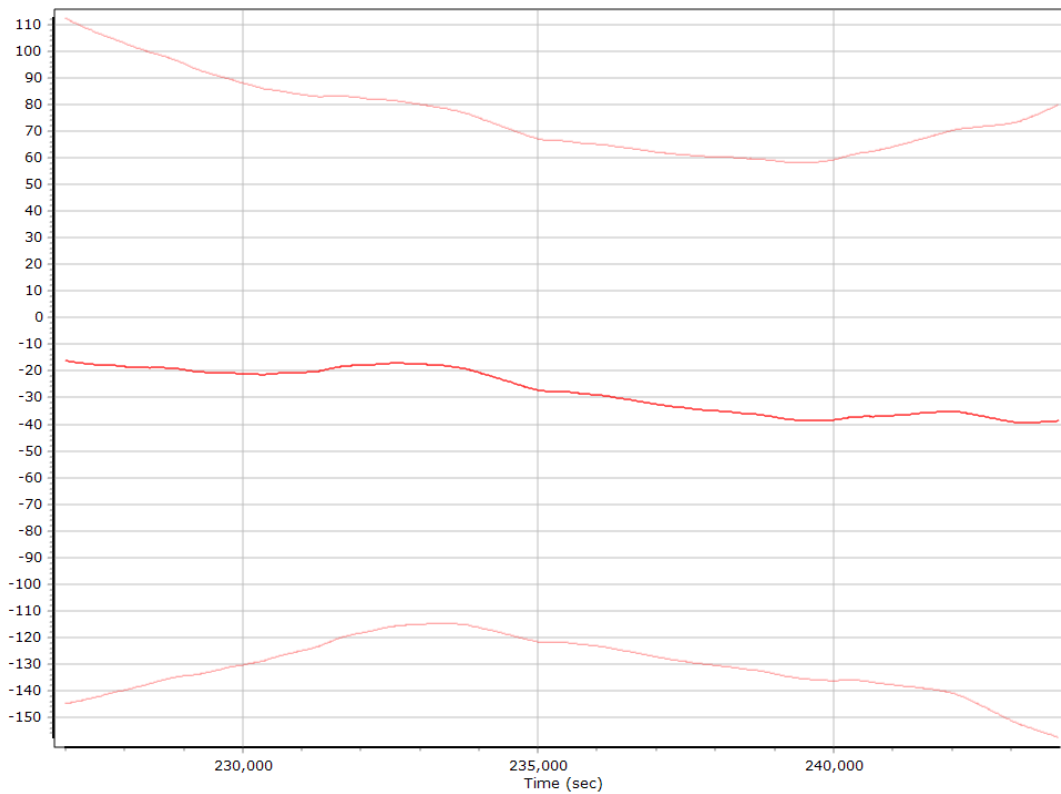
Z Accelerometer Bias (micro-g)



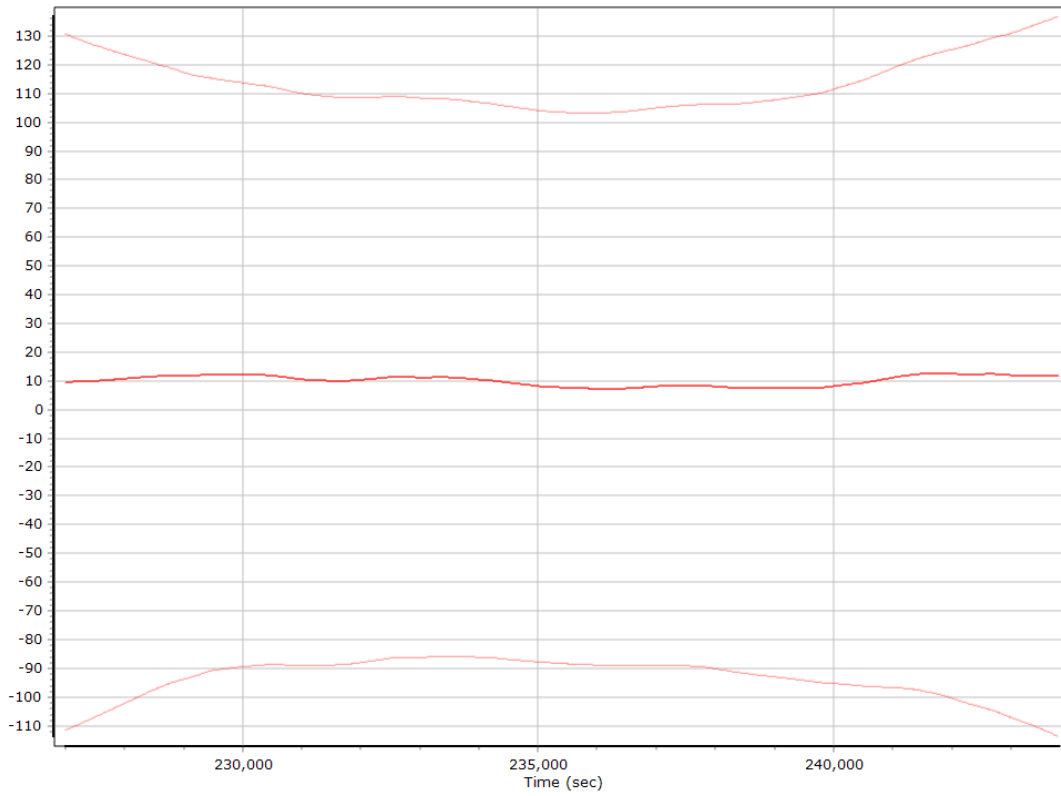
Accelerometer Scale Error (ppm)



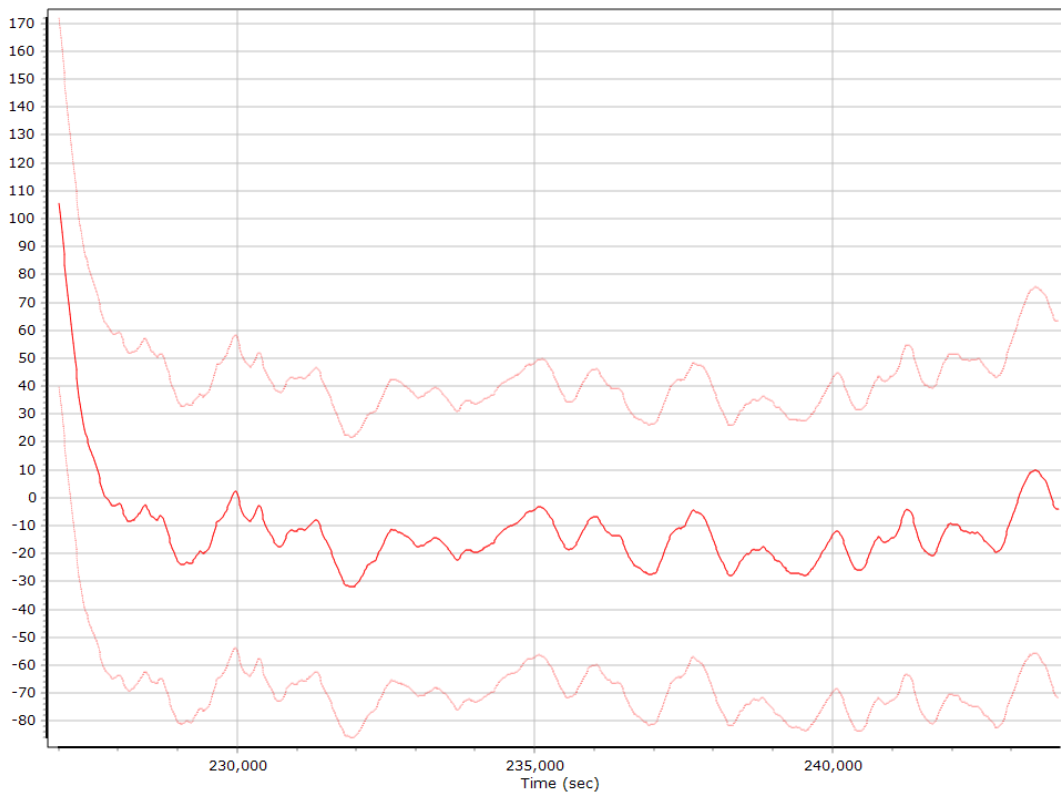
X Accelerometer Scale Error (ppm)



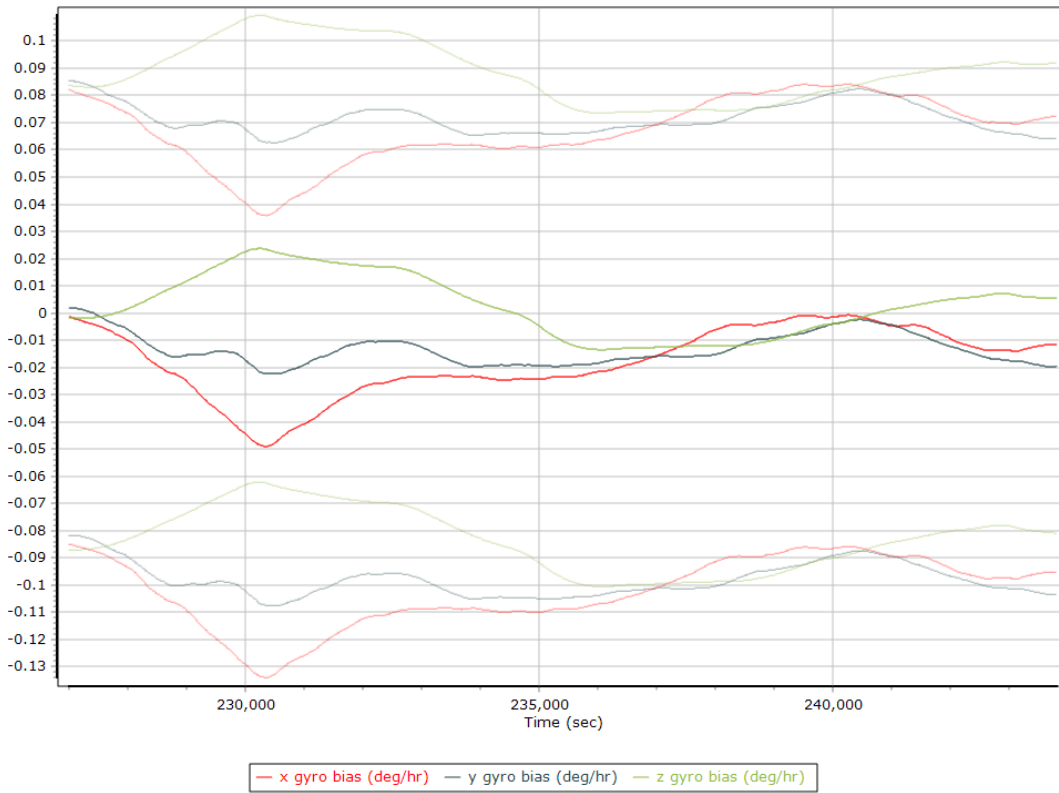
Y Accelerometer Scale Error (ppm)



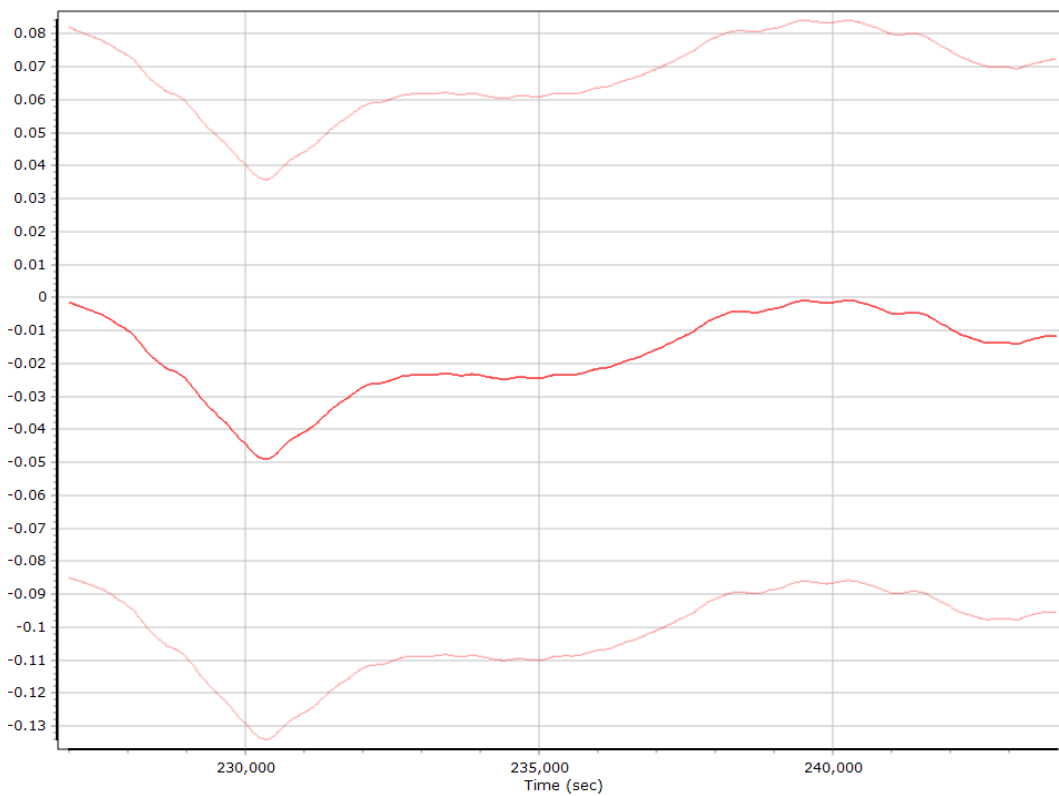
Z Accelerometer Scale Error (ppm)



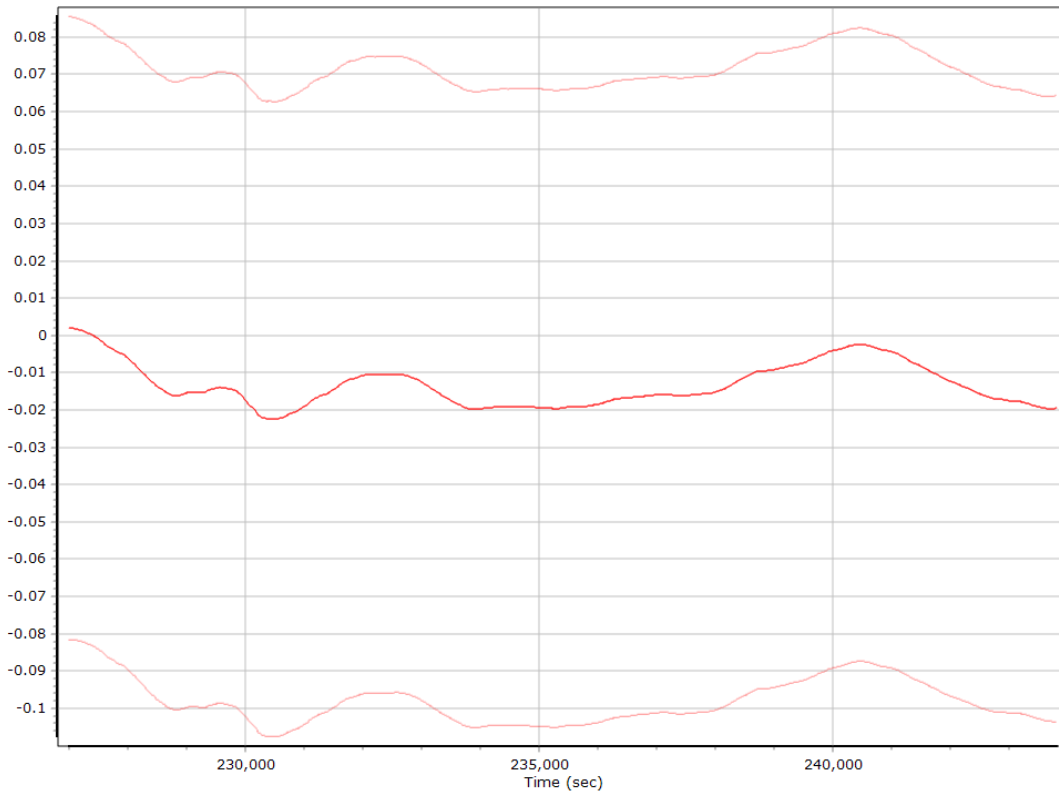
Gyro Bias (deg/h)



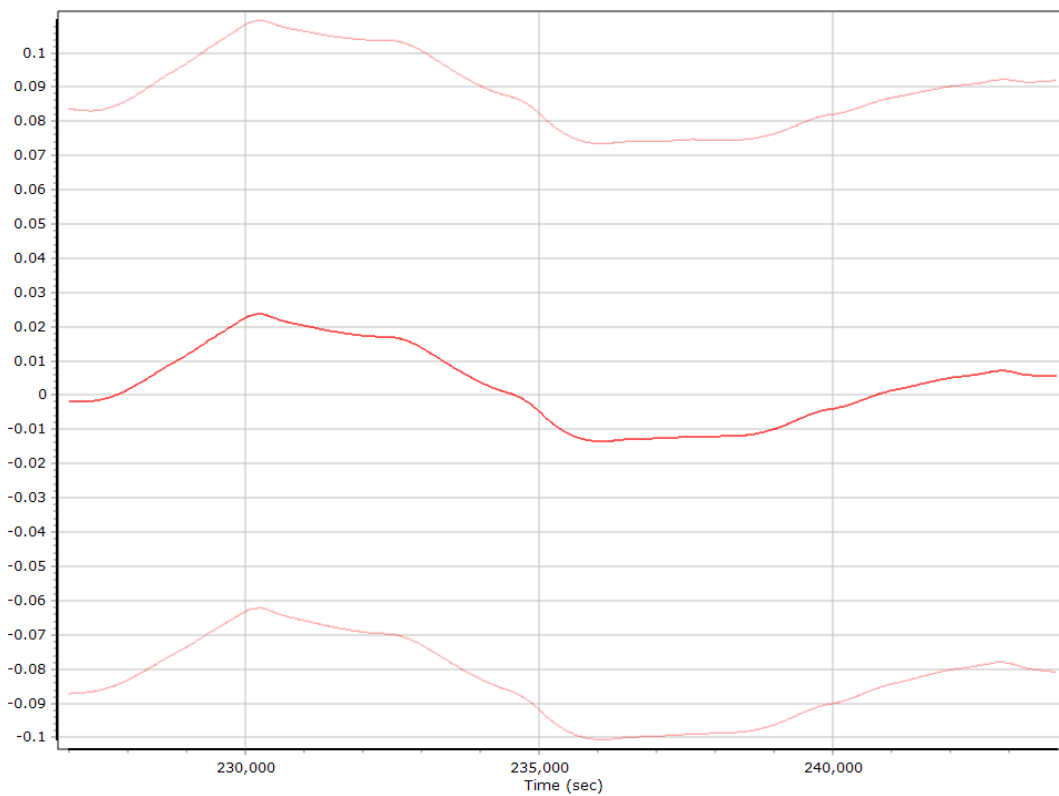
X Gyro Bias (deg/h)



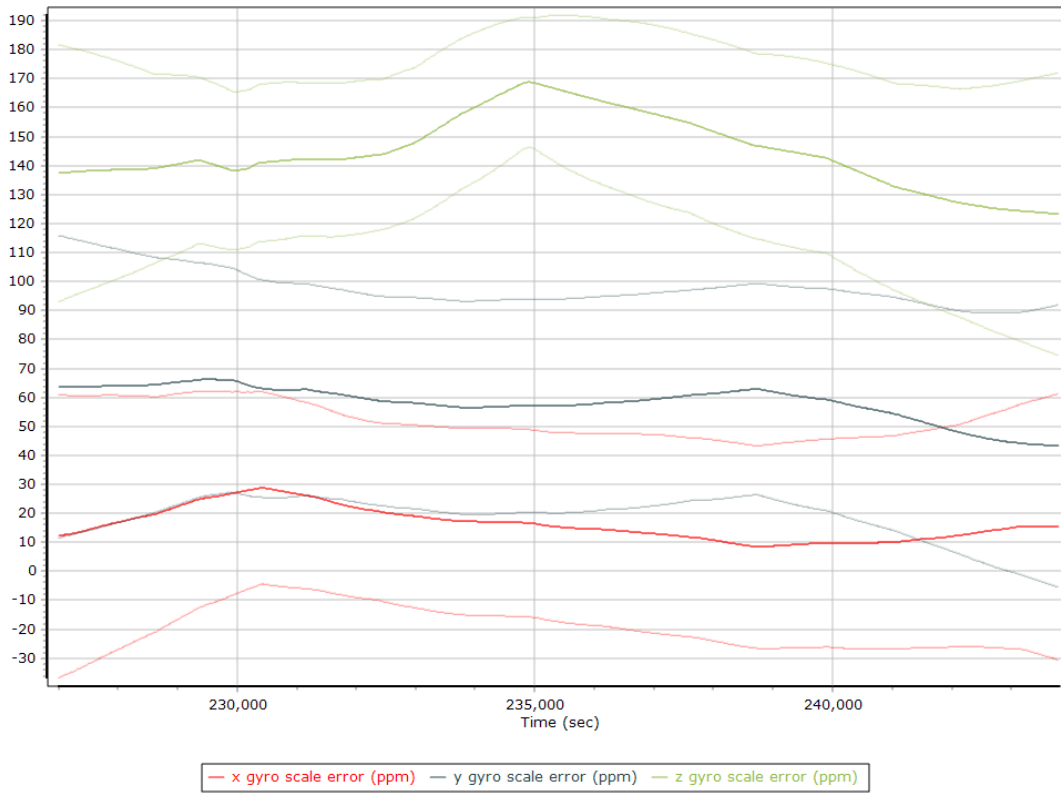
Y Gyro Bias (deg/h)



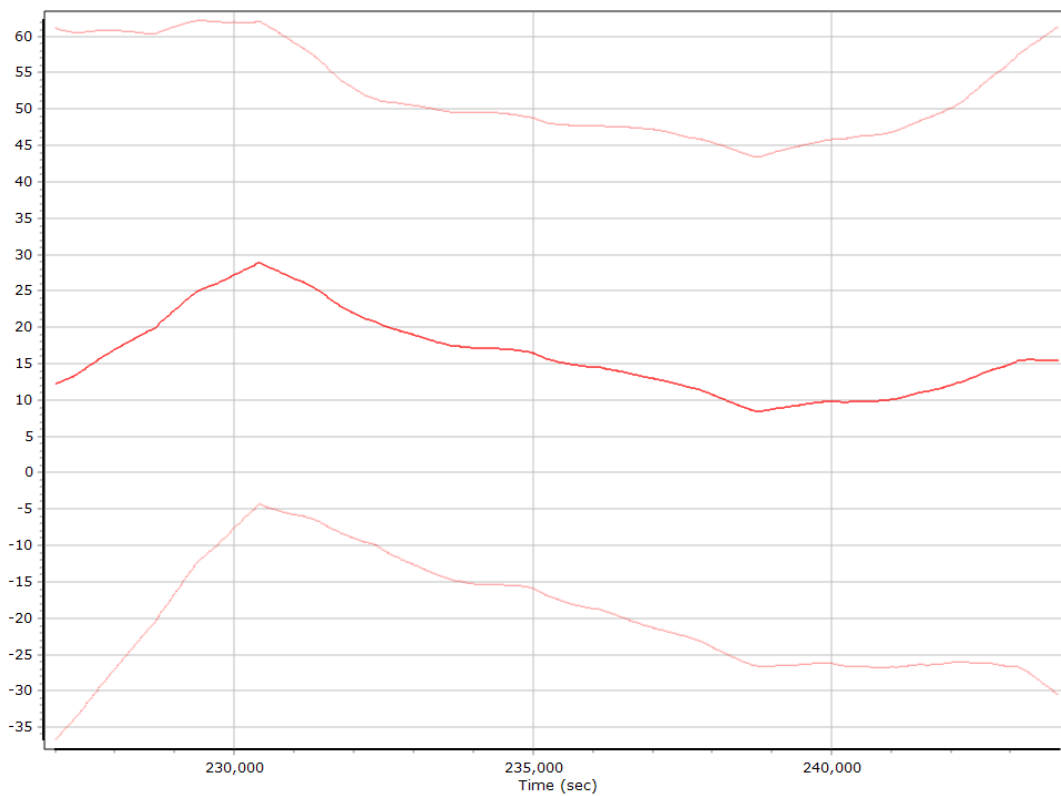
Z Gyro Bias (deg/h)



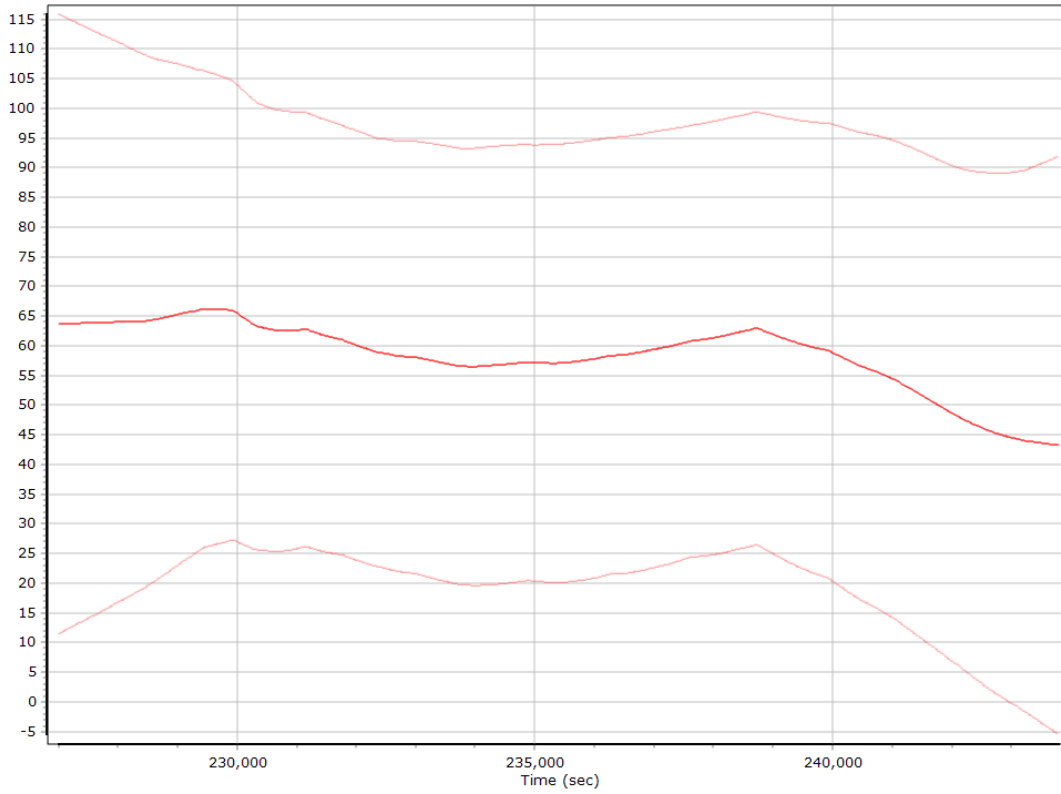
Gyro Scale Error (ppm)



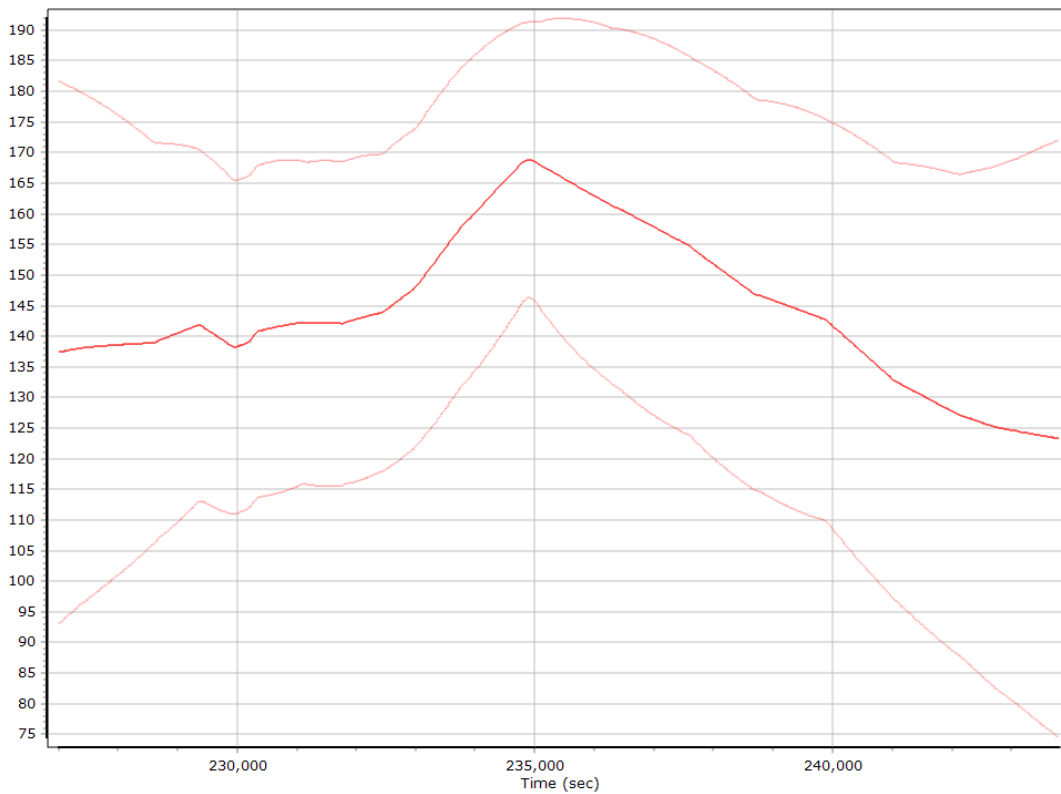
X Gyro Scale Error (ppm)



Y Gyro Scale Error (ppm)

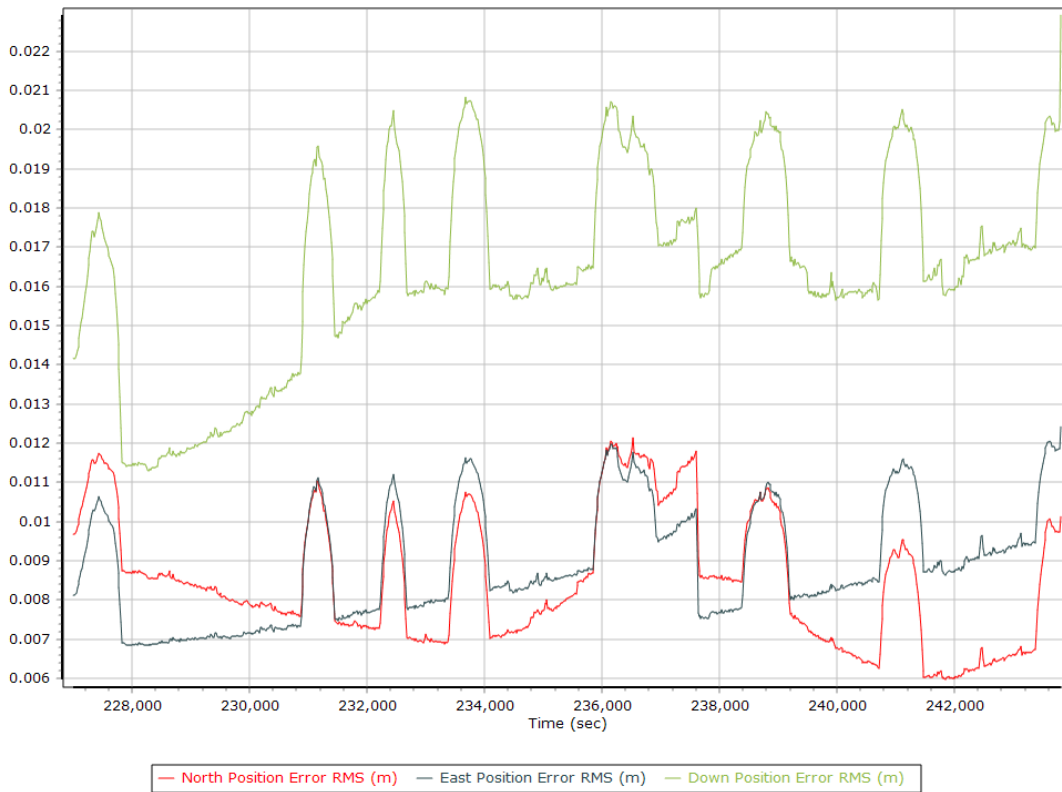


Z Gyro Scale Error (ppm)

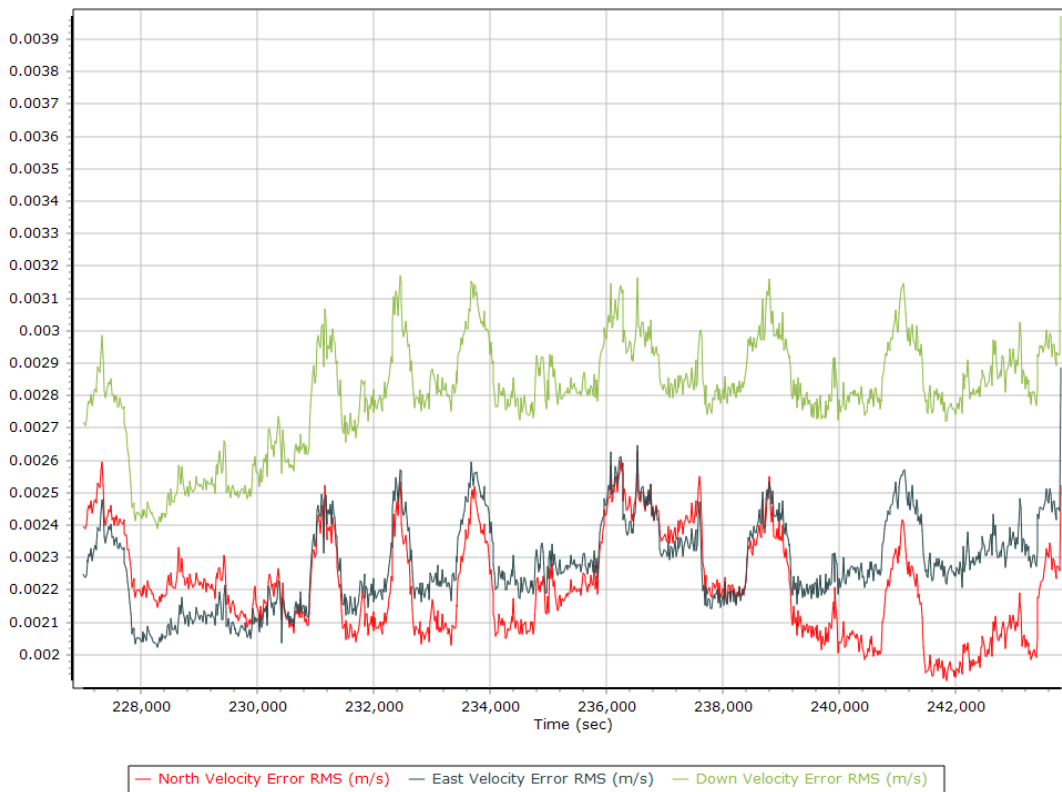


Smoothed Performance Metrics

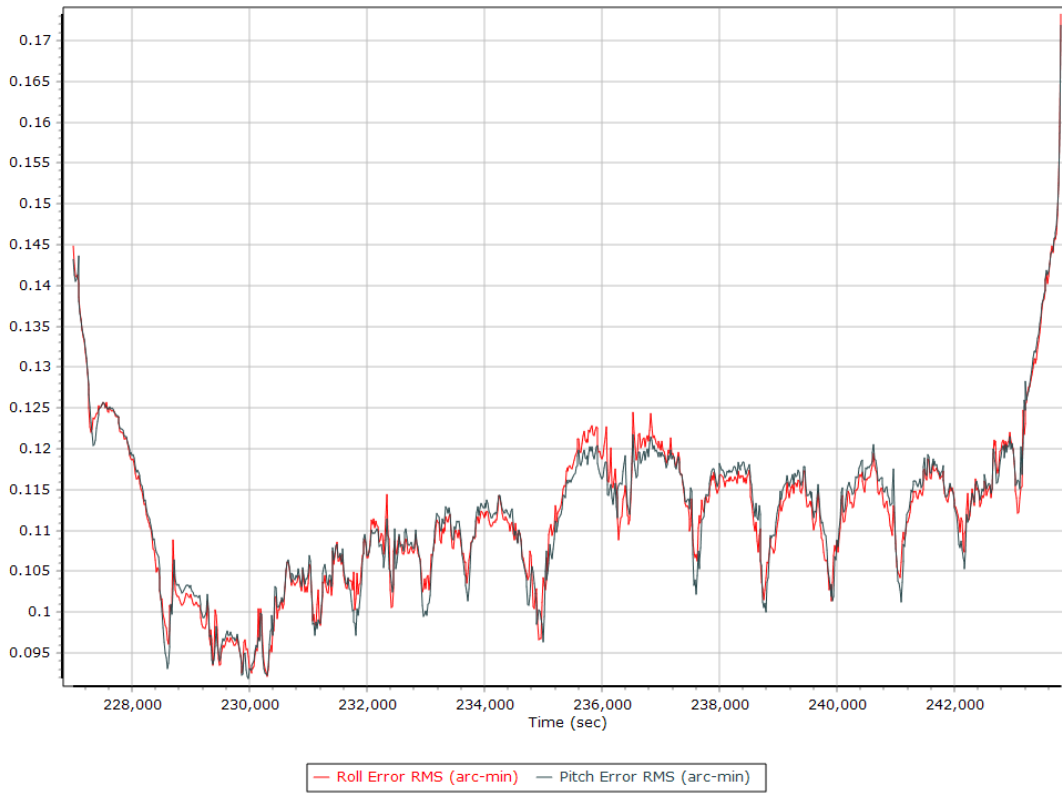
Position Error RMS (m)



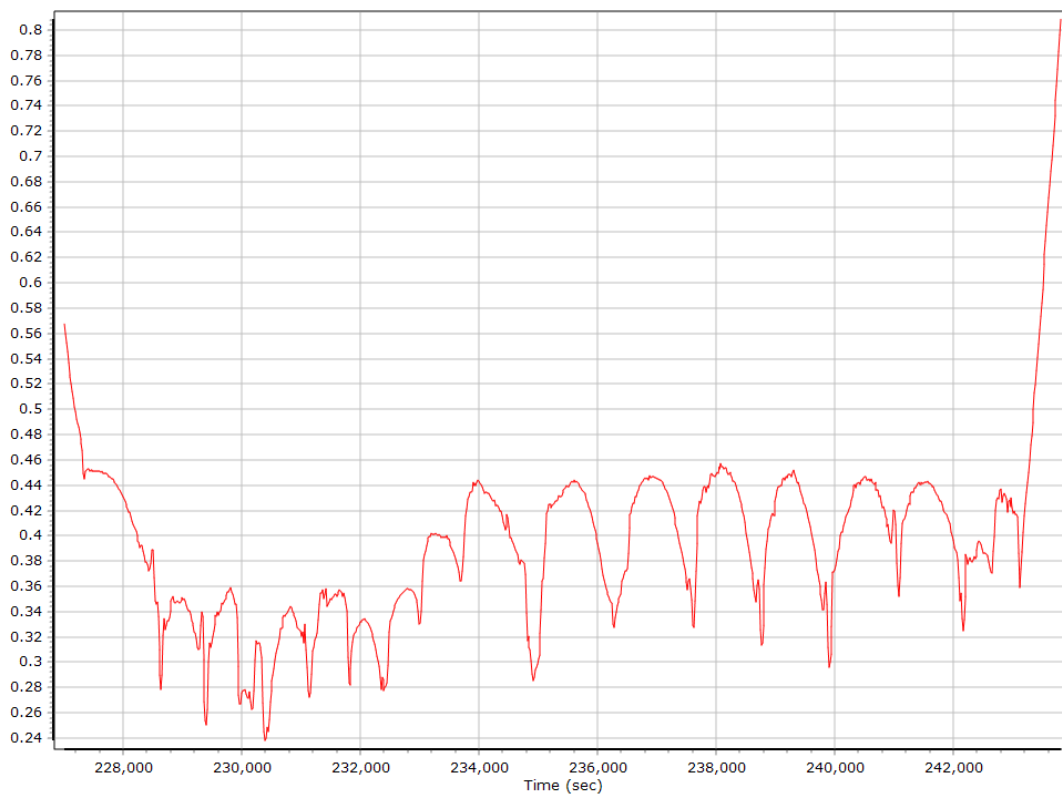
Velocity Error RMS (m/s)



Roll/Pitch Error RMS (arc-min)

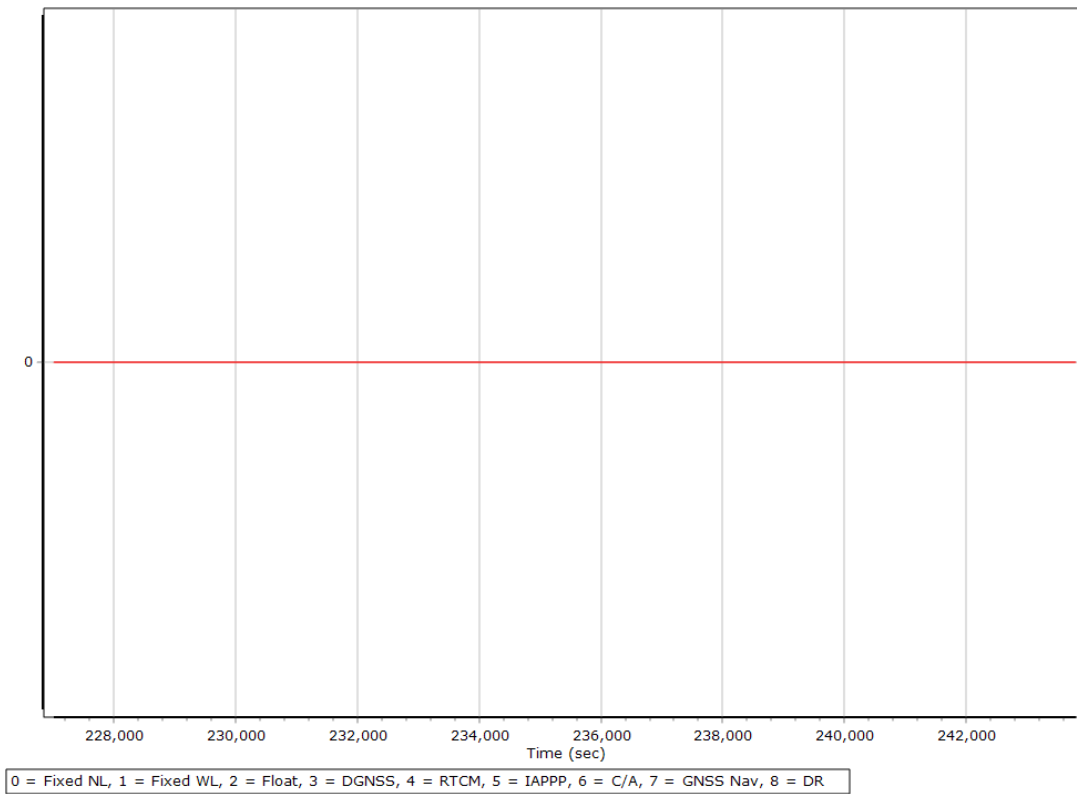


Heading Error RMS (arc-min)

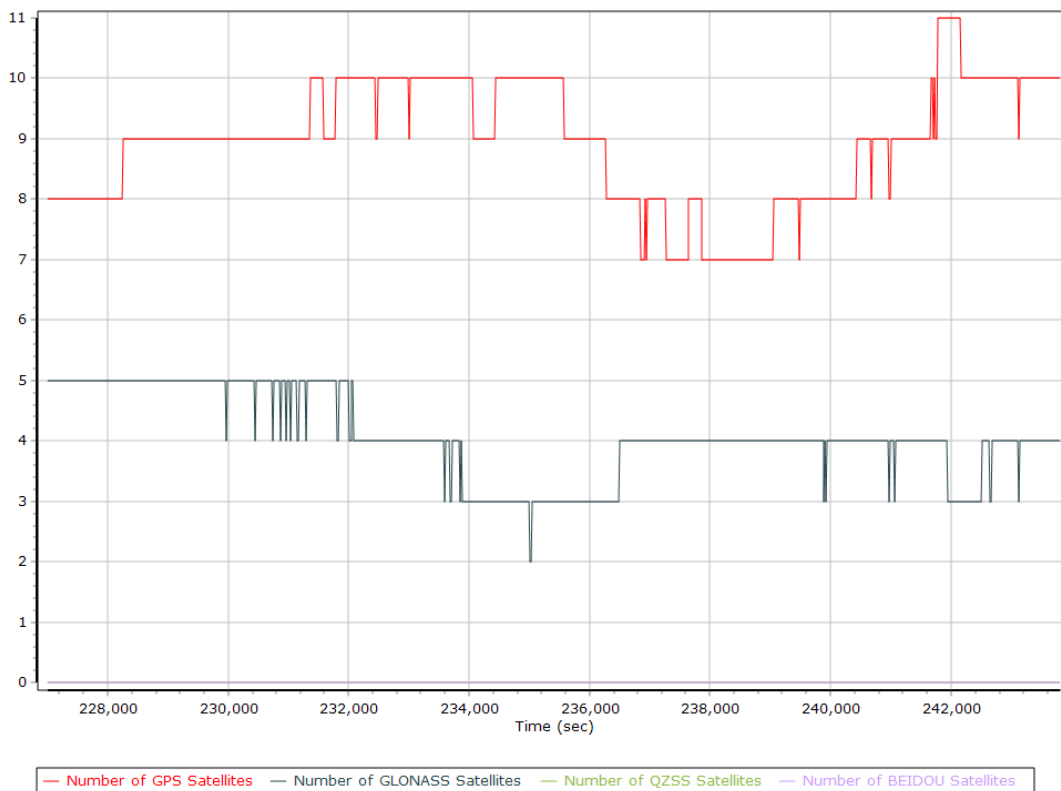


Smoothed Solution Status

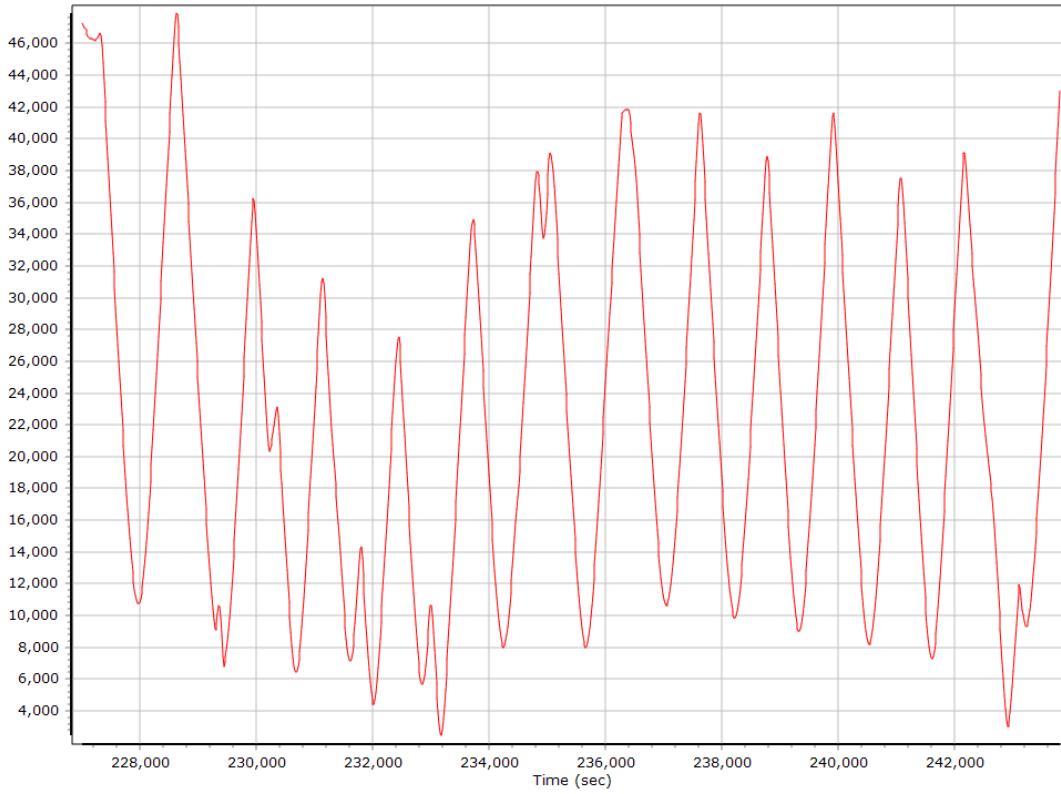
Processing Mode



Number of Satellites



Baseline Length



SBET IAkar Separation

