

General Information

Mission Information

| | |
|------------------|---------------------|
| Project name | |
| Processing date | 2019-04-11 18:52:32 |
| Mission date | 2019-04-03 12:27:28 |
| Mission duration | 06:23:35.225 |
| Processing mode | IN-Fusion SmartBase |
| GPS Station | ASB |

Rover Hardware Information

| | |
|---------------|--------------------------|
| Product | POS AV 610 VER6 HW2.5-12 |
| Serial number | S/N8223 |
| IMU type | 57 |
| Receiver type | BD982 |
| Antenna type | AV37 |

Project File List

Rover Data Files

| File name | File type |
|-----------------------------|-----------|
| 190403_122727_INS-GPS_1.raw | POS Data |

Input Files

| File Name | File type |
|-----------------------------|-----------------------------|
| Ephm0930.19g | GLONASS Broadcast Ephemeris |
| Ephm0930.19n | GPS Broadcast Ephemeris |
| igr20472.sp3 | GPS Precise Ephemeris |
| igr20473.sp3 | GPS Precise Ephemeris |
| igr20474.sp3 | GPS Precise Ephemeris |
| bkv1093m00.19o.gps+glo.rnx2 | GNSS SingleBase |
| dunn093m00.19o.gps+glo.rnx2 | GNSS SingleBase |
| f1d7093m00.19o.gps+glo.rnx2 | GNSS SingleBase |
| f1dc093m00.19o.gps+glo.rnx2 | GNSS SingleBase |
| f1eu093m00.19o.gps+glo.rnx2 | GNSS SingleBase |
| f1hs093m00.19o.gps+glo.rnx2 | GNSS SingleBase |
| f1ks093m00.19o.gps+glo.rnx2 | GNSS SingleBase |
| f1wd093m00.19o.gps+glo.rnx2 | GNSS SingleBase |
| ings093m00.19o.gps+glo.rnx2 | GNSS SingleBase |
| ocla093m00.19o.gps+glo.rnx2 | GNSS SingleBase |
| orl1093m00.19o.gps+glo.rnx2 | GNSS SingleBase |
| polk093m00.19o.gps+glo.rnx2 | GNSS SingleBase |
| zefr093m00.19o.gps+glo.rnx2 | GNSS SingleBase |

Output Files

| Filename | File type |
|-------------------|----------------------|
| sbt_Mission 1.out | SBET Trajectory File |

Rover Data Summary

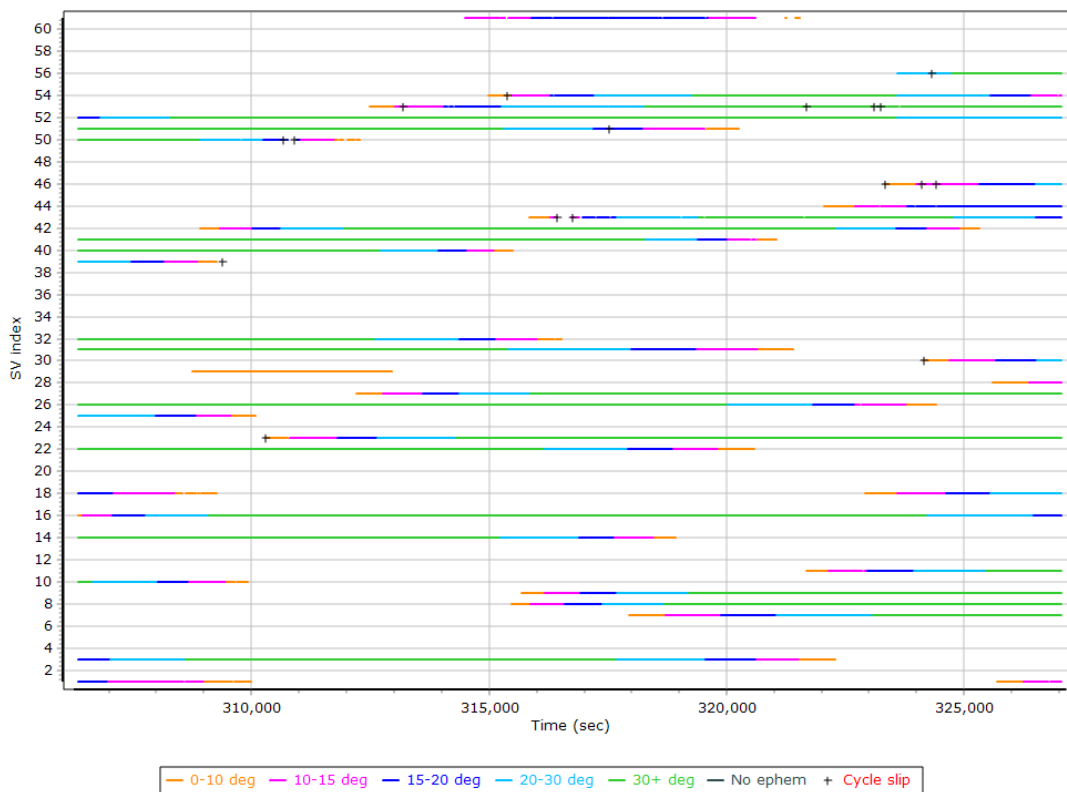
| | | | |
|--|-----------------------------------|--------|--------|
| First raw data file | 190403_122727_INS-GPS_1.raw | | |
| Last raw data file | 190403_122727_INS-GPS_1.raw | | |
| Start GPS week | 2047 | | |
| Start time | 304047.213 (4/3/2019 12:27:09 PM) | | |
| End time | 327062.438 (4/3/2019 6:50:44 PM) | | |
| Start of fine alignment | 306288.520 (4/3/2019 1:04:30 PM) | | |
| Available subsystems | Primary GNSS, IMU | | |
| POS Event Input | None | | |
| Correction data | None | | |
| IMU Installation Lever Arms & Mounting Angles | | | |
| Reference to IMU lever arm [m] | 0.000 | 0.000 | 0.000 |
| Reference to IMU mounting angles [deg] | 0.000 | 0.000 | 0.000 |
| Reference to Primary GNSS lever arm [m] | 0.080 | -0.198 | -0.950 |
| Reference to Primary GNSS lever arm std dev [m] | -1.000 | | |
| Aircraft to Reference mounting angles [deg] | 0.000 | 0.000 | 0.000 |

Raw Data QC

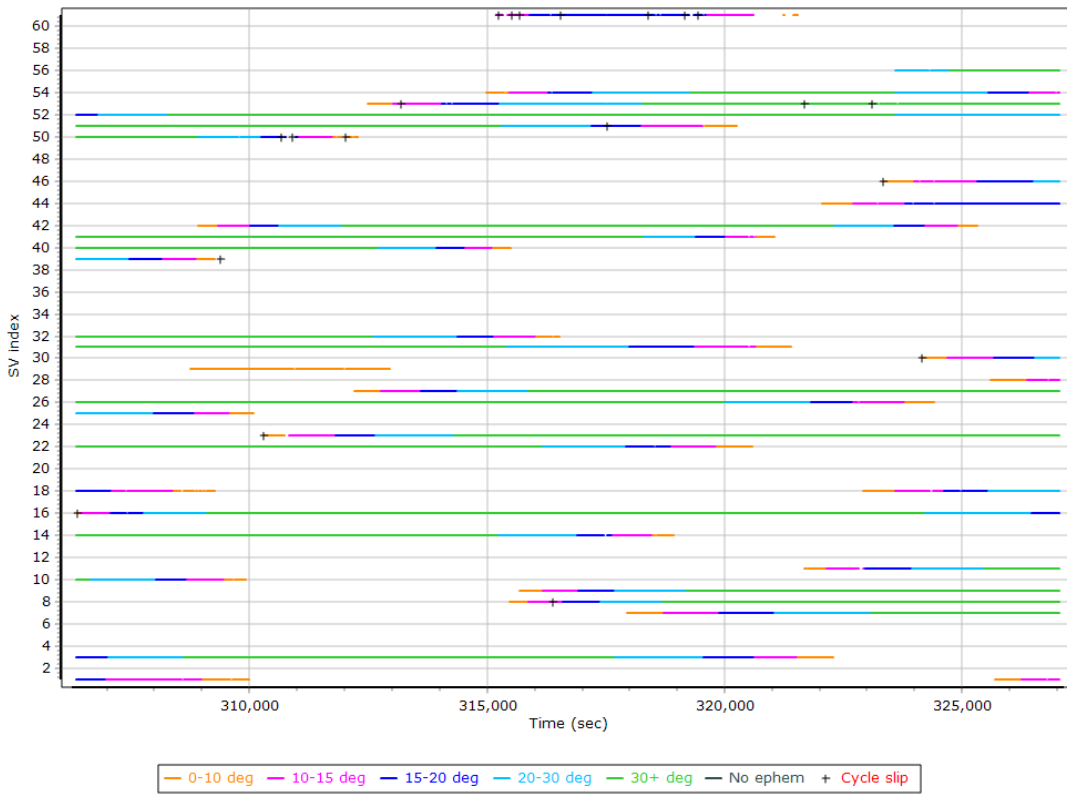
Raw IMU Import QC Summary

| | |
|-------------------------|---------------------|
| IMU data input file | imu_Mission 1.dat |
| IMU data check log file | imudt_Mission 1.log |
| IMU Records Processed | 4602337 |
| Termination Status | Normal |
| IMU Anomalies | 0 |

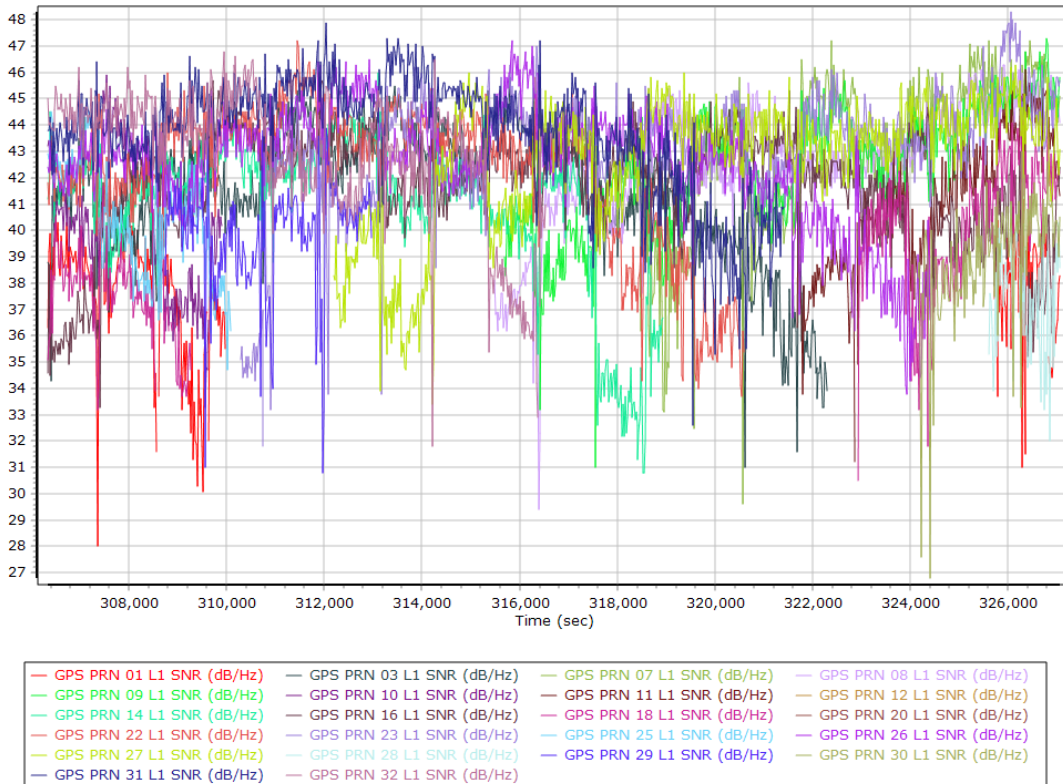
L1 Satellite Lock/Elevation



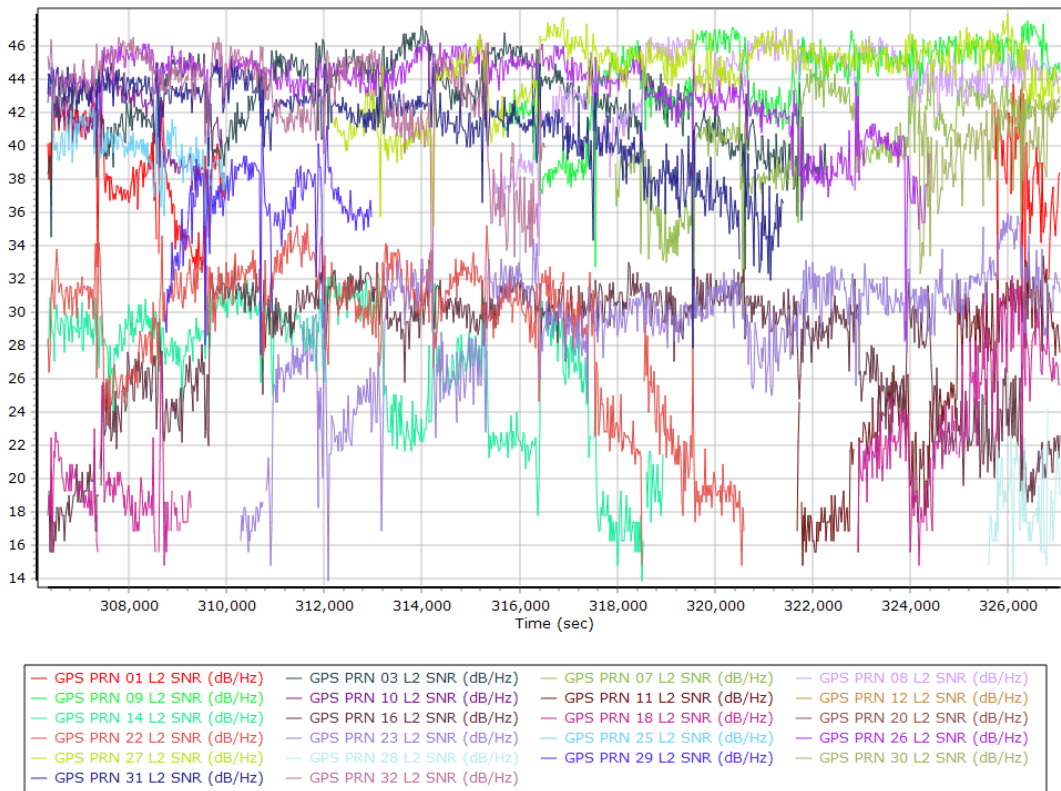
L2 Satellite Lock/Elevation



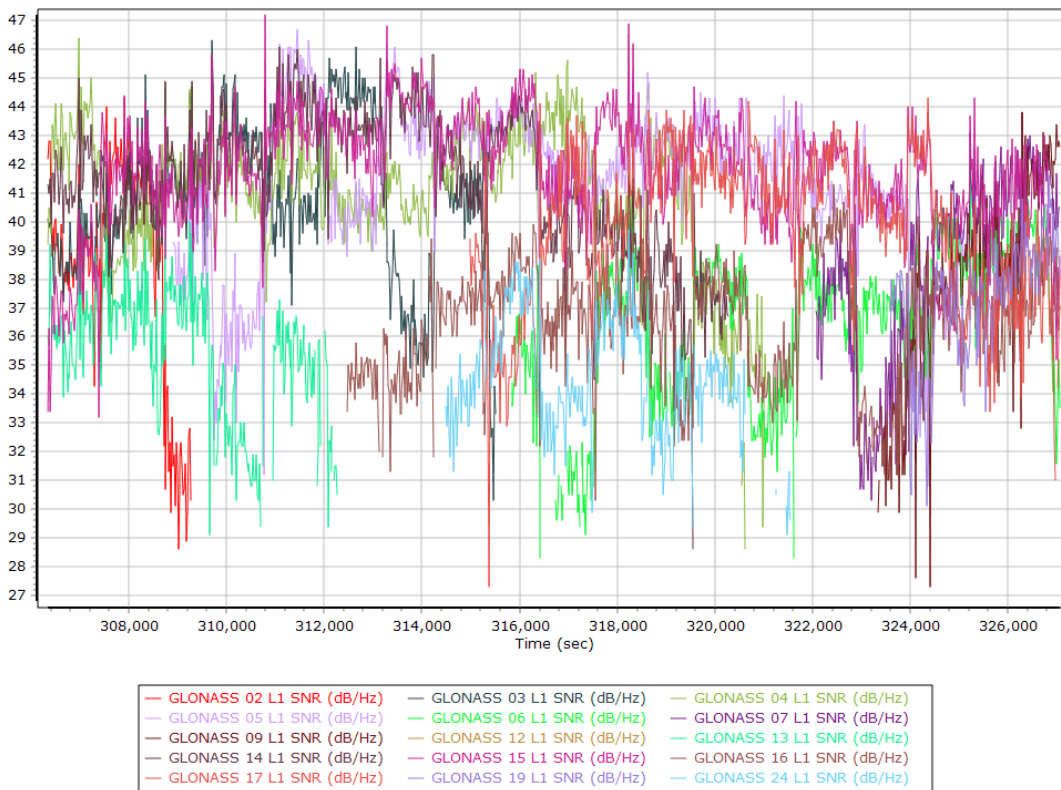
GPS L1 SNR



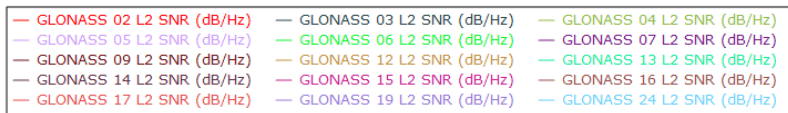
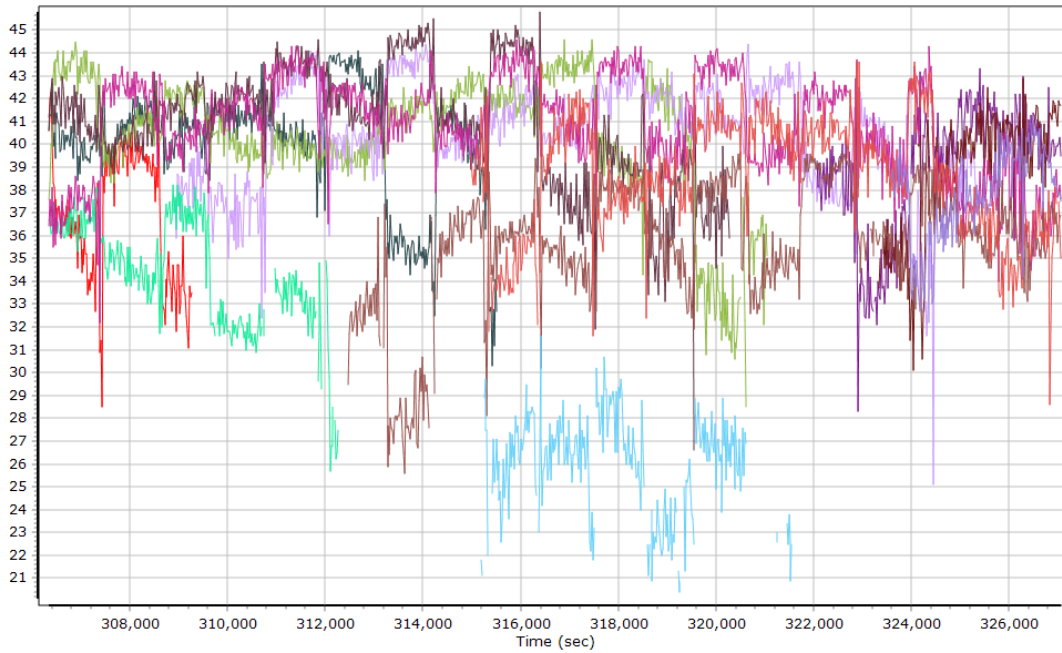
GPS L2 SNR



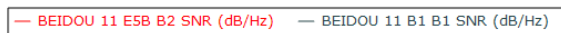
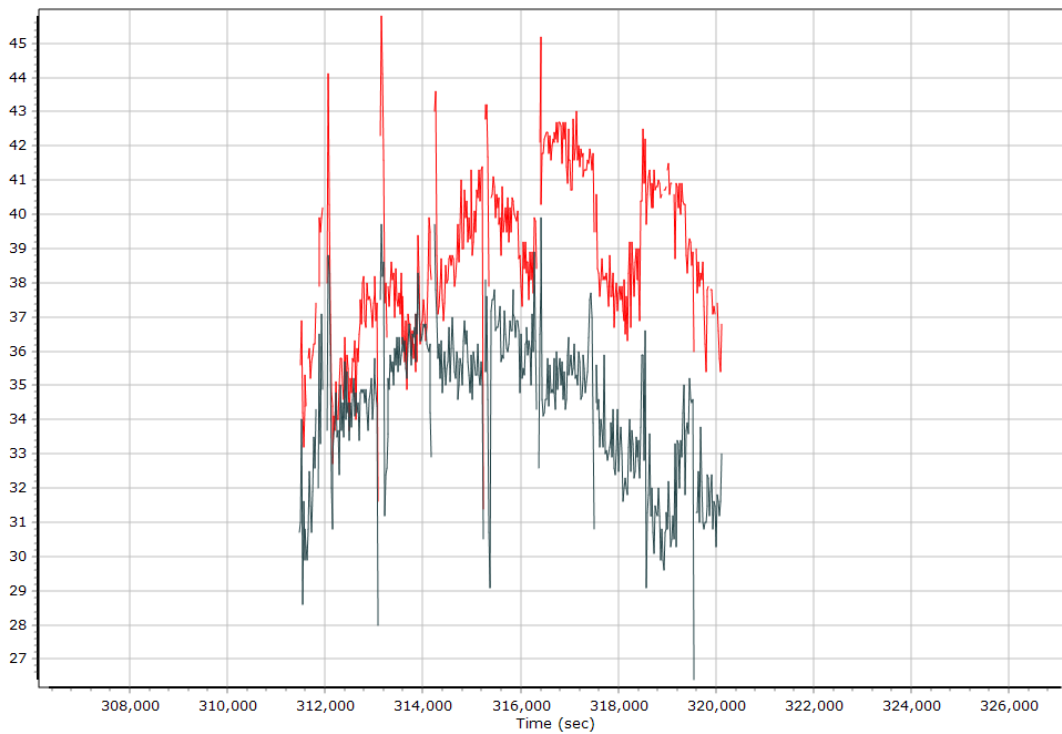
GLONASS L1 SNR



GLONASS L2 SNR

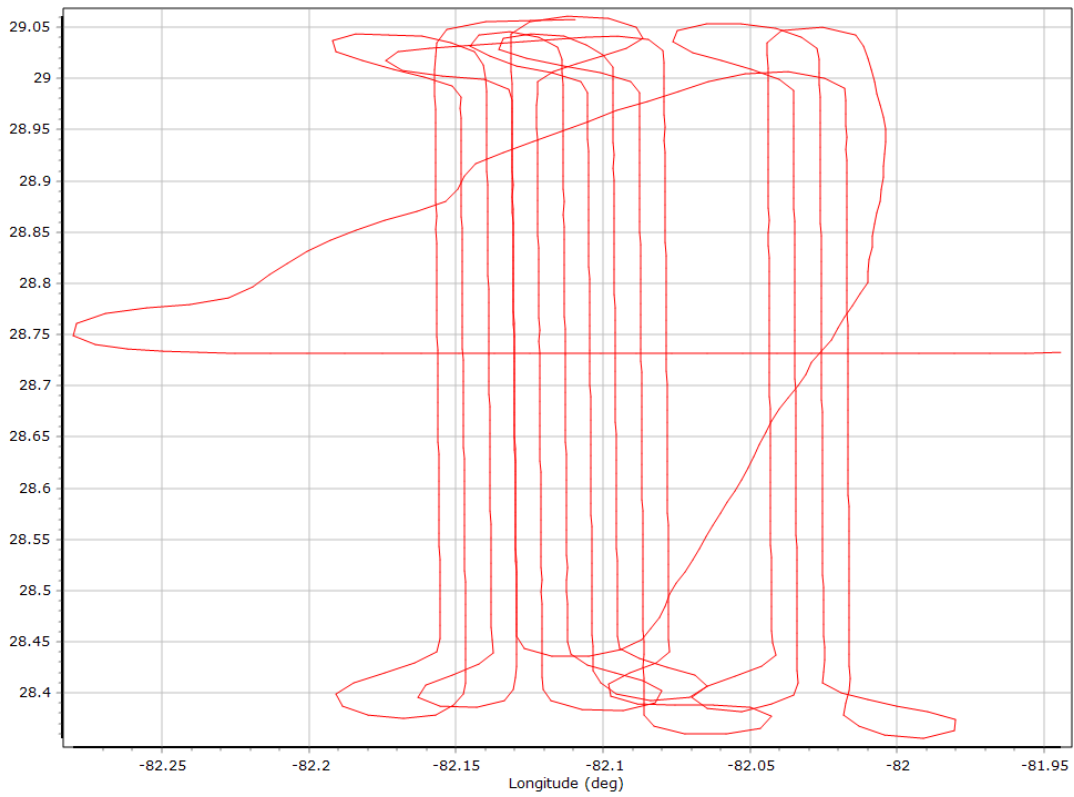


BEIDOU SNR

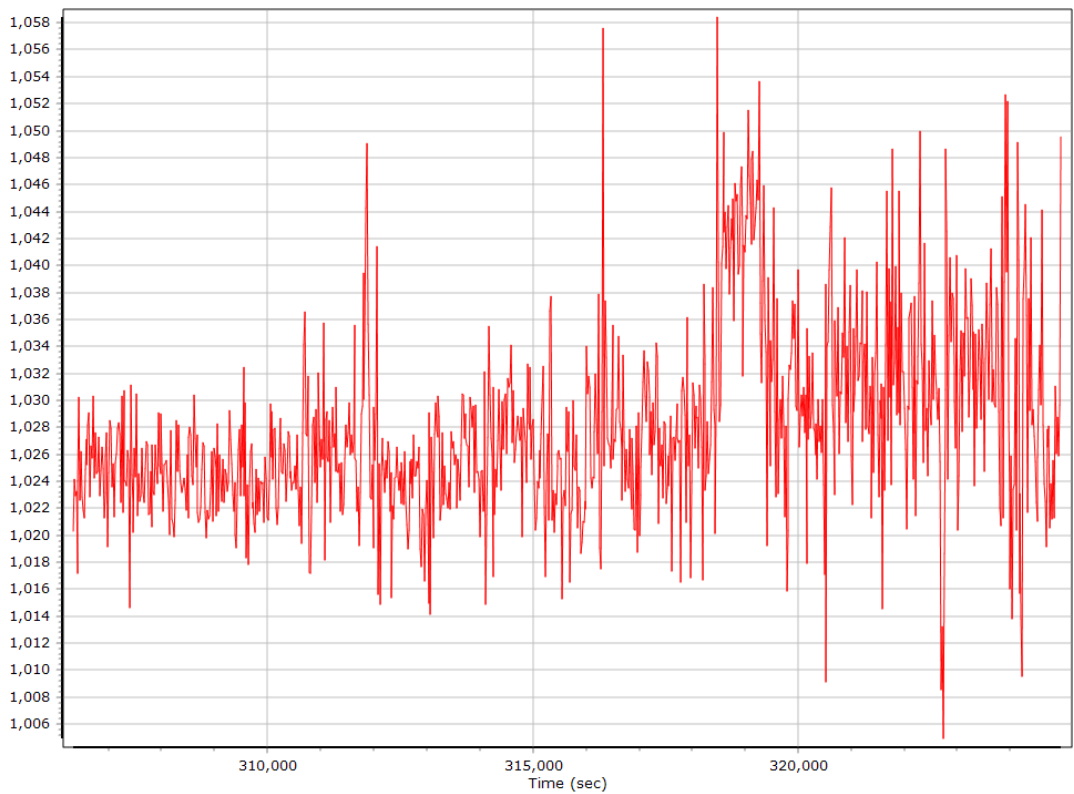


Trajectory Information

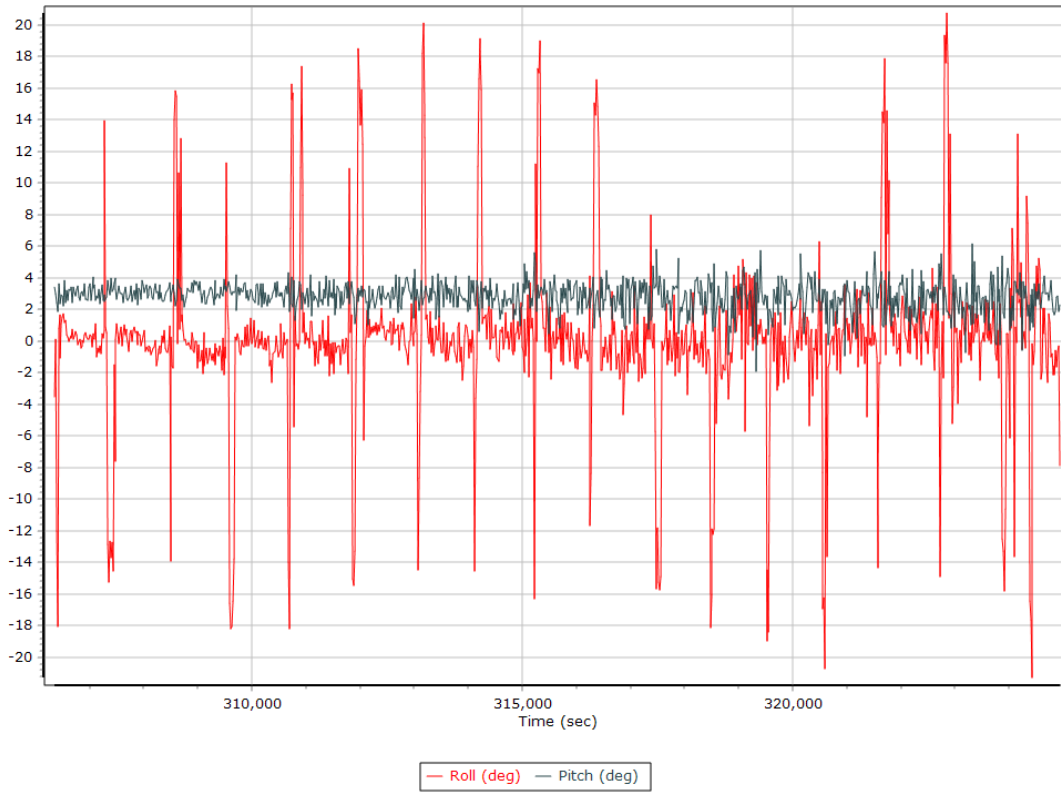
Top View



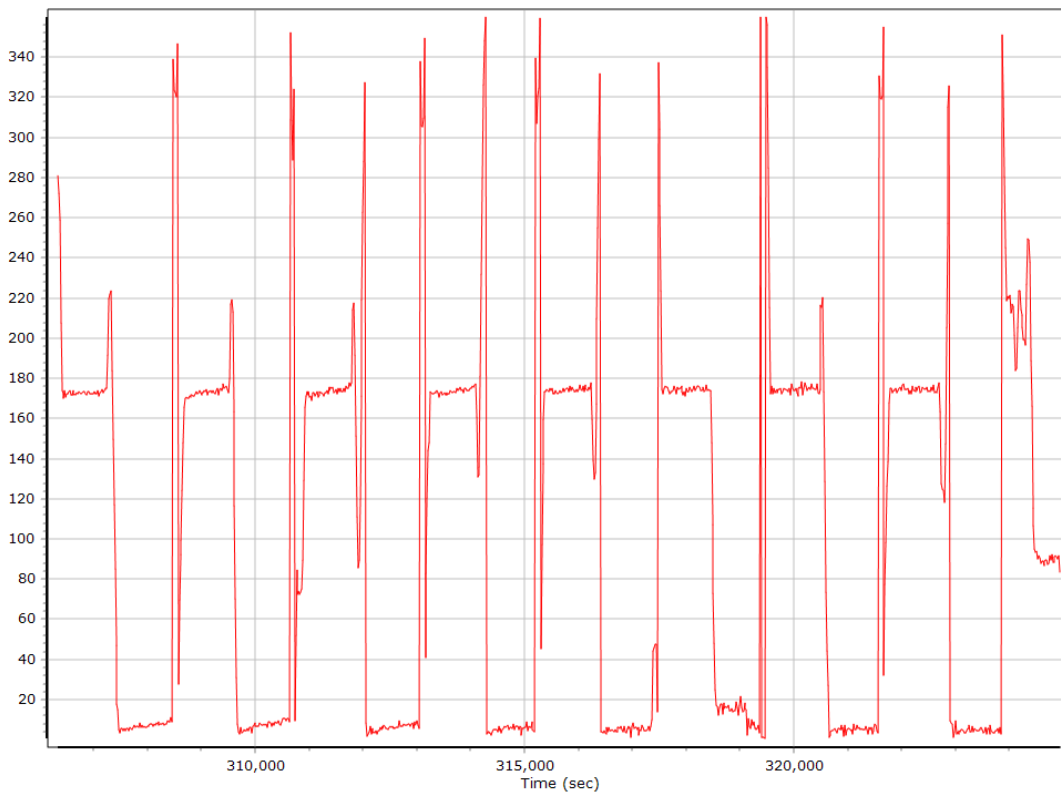
Altitude



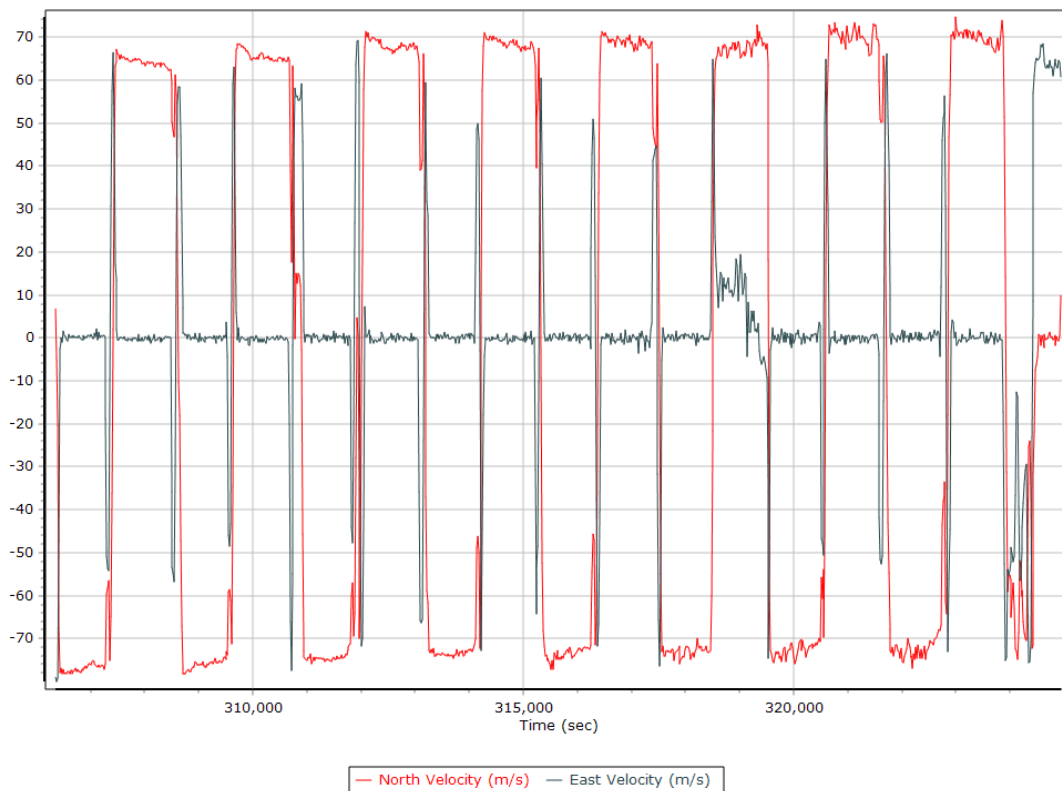
Roll/Pitch



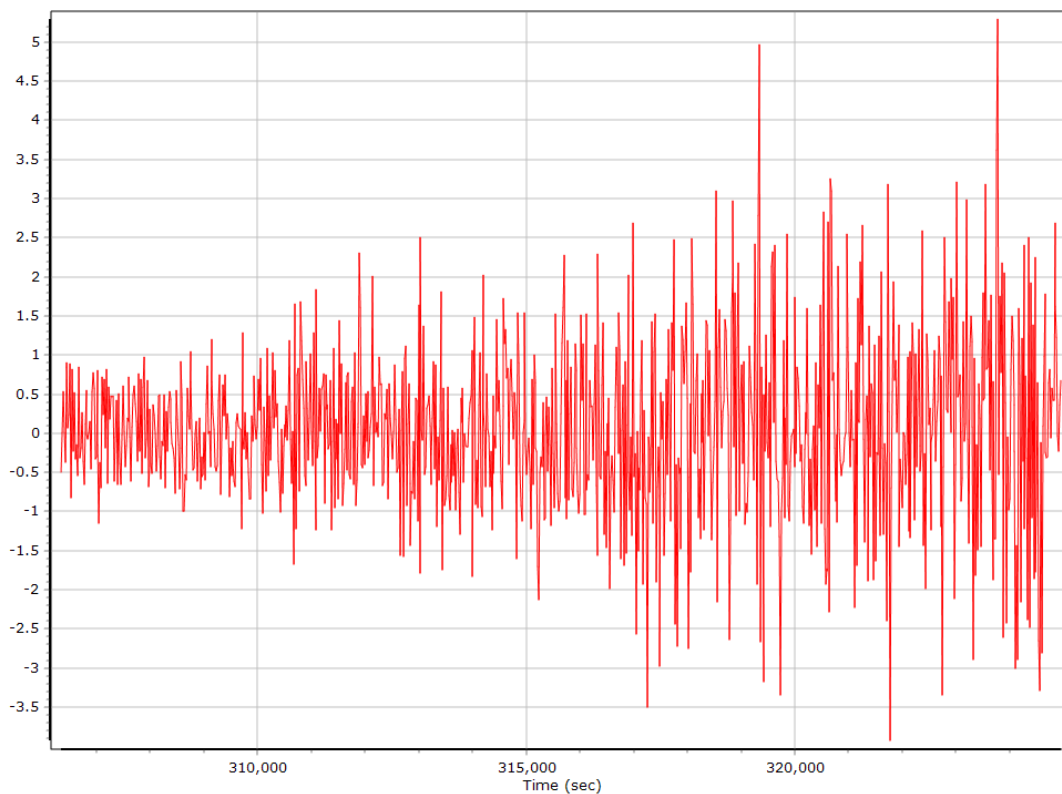
Heading



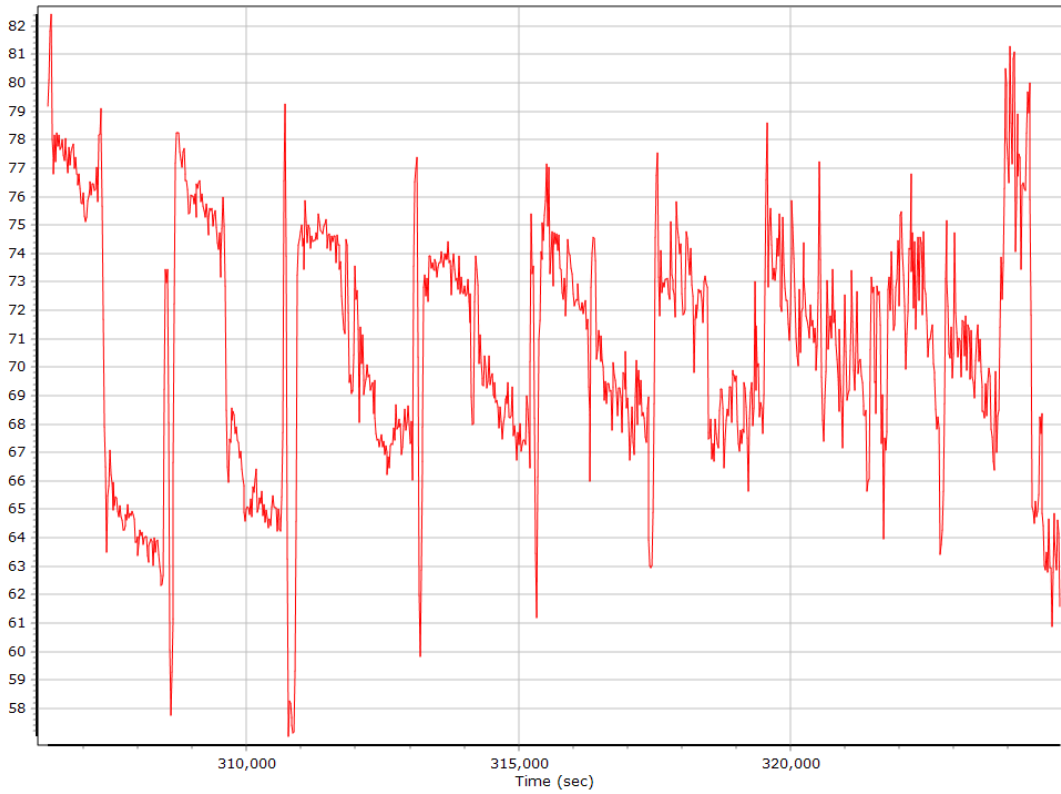
North/East Velocity



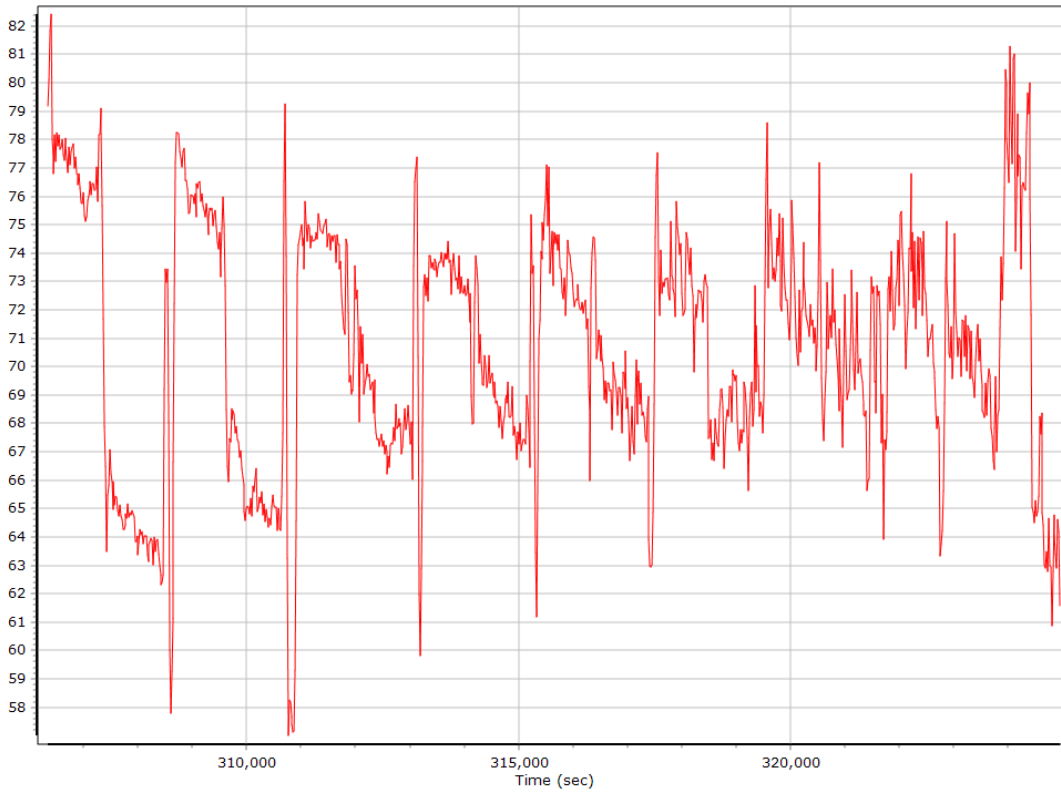
Down Velocity



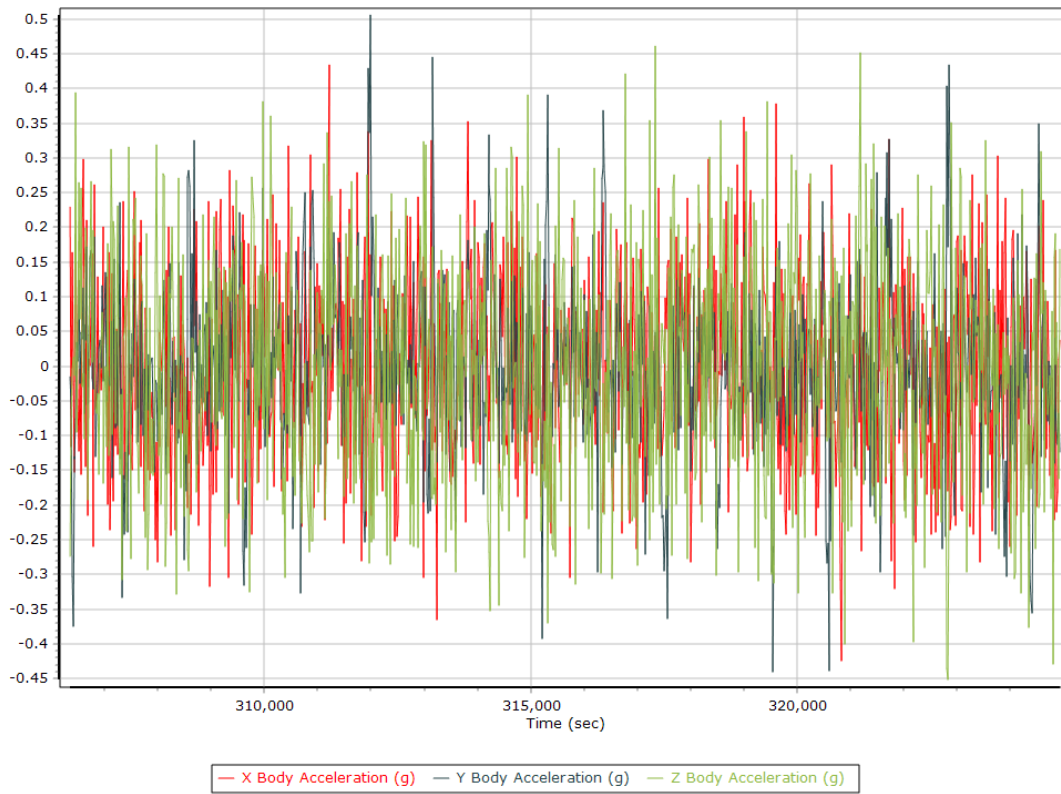
Total Speed



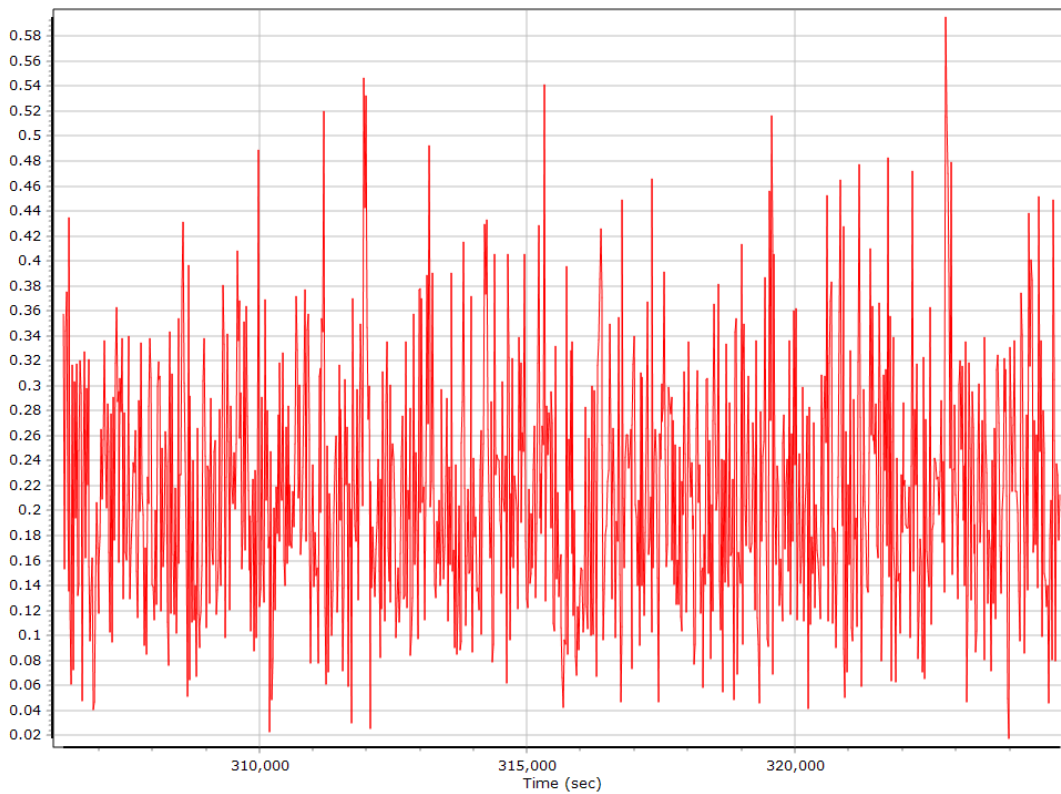
Ground Speed



Body Acceleration



Total Body Acceleration



Body Angular Rate



SmartBase Processing Summary

Smart Select Options

| | |
|------------------------------|-------|
| Archive enabled | False |
| User database enabled | False |
| Include high-rate data sites | True |
| Target GNSS Selection | GNSS |

Basestation Selection

| Date | ID | Dist | Data Type | Rate | Service | Database | Status |
|------|----|------|-----------|------|---------|----------|--------|
|------|----|------|-----------|------|---------|----------|--------|

SmartBase Results

| | |
|---|---------------|
| SmartBase status | |
| Primary station Id | |
| Primary station data rate [sec] | 0.0 |
| VRS/ASB generation rate [sec] | 0.0 |
| VRS/ASB timespan | |
| Number of reference stations | 0 |
| Primary station GPS measurement usage [%] | 0.0 |
| Average number of satellites per epoch | 0.0 |
| Max number of GPS stations used | 0 |
| Min number of GPS stations used | 0 |
| Total full data gap [sec] | 0 |
| Total individual satellite data gap [sec] | 0 |
| GPS precise vs. broadcast ephemeris used | 0.0 % / 0.0 % |
| Termination Status | |

SmartBase Quality Check

GNSS QC

GNSS QC Statistics

| Statistics | Min | Max | Mean |
|----------------------|----------|--------|-------------|
| Baseline length [km] | 0.12 | 117.33 | |
| Number of GPS SV | 6 | 11 | 9 |
| Number of GLONASS SV | 0 | 6 | 5 |
| Number of QZSS SV | 0 | 0 | 0 |
| Number of BEIDOU SV | 0 | 0 | 0 |
| Total number of SV | 10 | 17 | 14 |
| PDOP | 1.21 | 3.88 | 1.60 |
| QC Solution Gaps | 1.00 | 1.00 | |
| Solution Type | Fixed | Float | No solution |
| Epoch (s) | 22981.00 | 0.00 | 1.00 |
| Percentage | 100.00 | 0.00 | 0.00 |

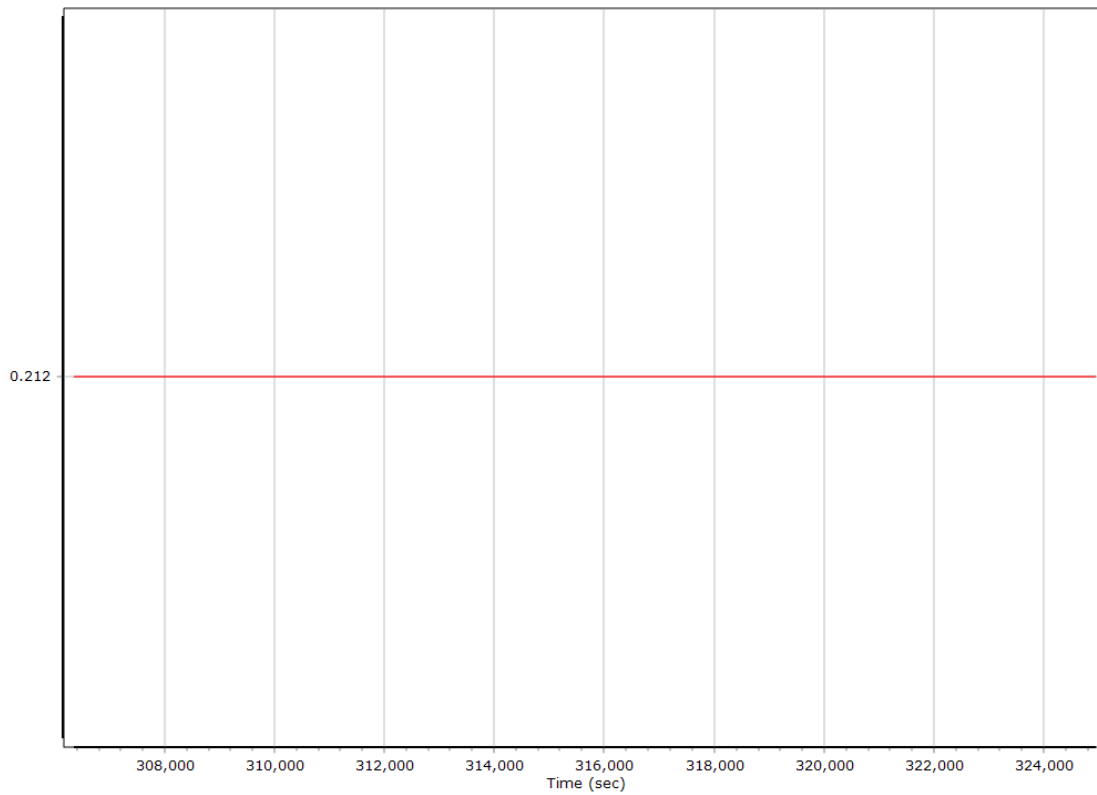
GNSS-Inertial Processor Configuration

| | | | |
|---|----------------------------------|-------|--------|
| Processing mode | IN-Fusion SmartBase | | |
| Stabilized mount | False | | |
| Base station | ASB | | |
| Processing start time | 306287.710 (4/3/2019 1:04:29 PM) | | |
| Processing end time | 324951.955 (4/3/2019 6:15:33 PM) | | |
| Initial attitude source | Real-Time VNAV/RNAV Attitude | | |
| IMU Sensor Context | Processing with Onboard IMU | | |
| Reference to IMU lever arm [m] | 0.000 | 0.000 | 0.000 |
| Reference to IMU mounting angles [deg] | 0.000 | 0.000 | 0.000 |
| Reference to Primary GNSS lever arm [m] | 0.212 | 0.092 | -0.769 |
| Reference to Primary GNSS lever arm std dev [m] | 0.030 | 0.030 | 0.030 |
| Aircraft to Reference mounting angles [deg] | 0.000 | 0.000 | 0.000 |

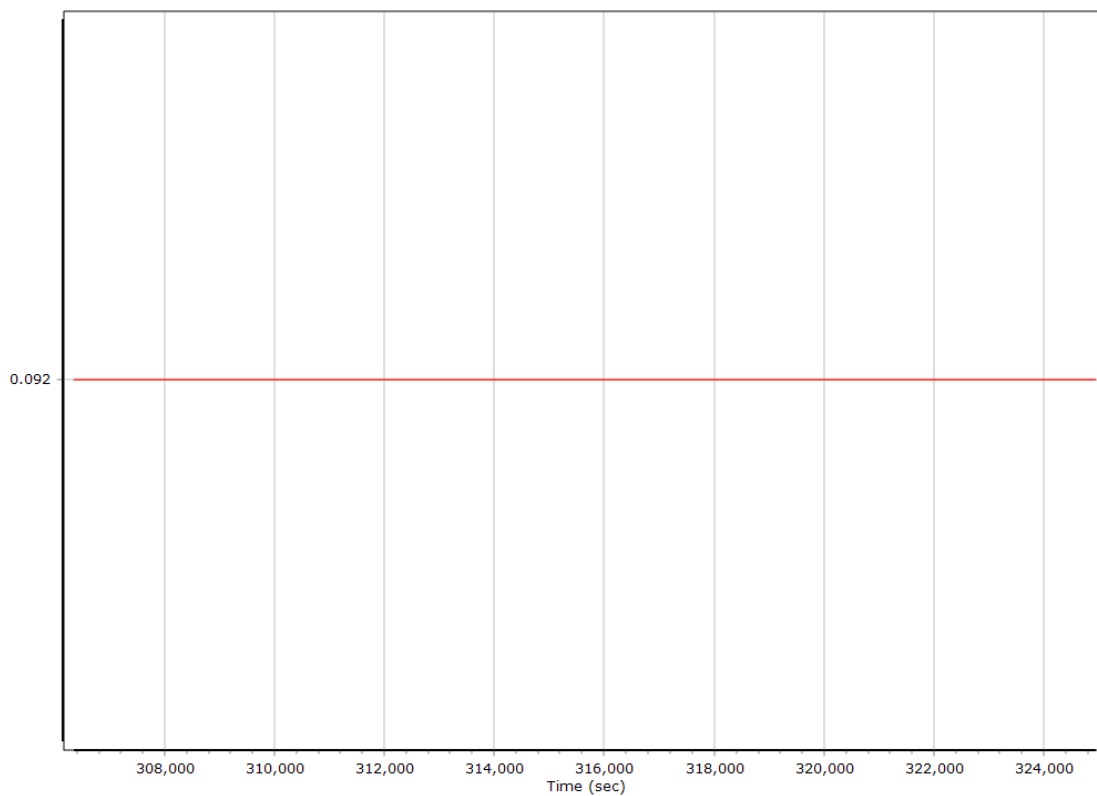
Calibrated Installation Parameters

Reference-Primary GNSS Lever Arm

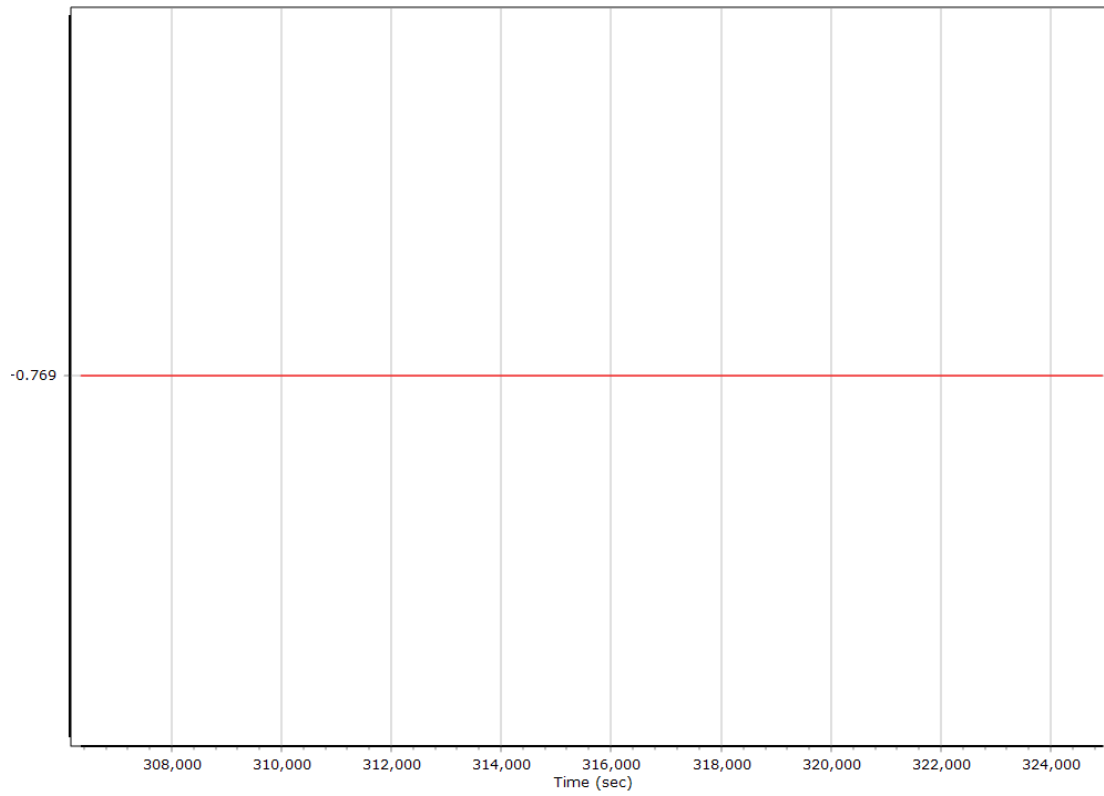
X Reference-Primary GNSS Lever Arm (m)



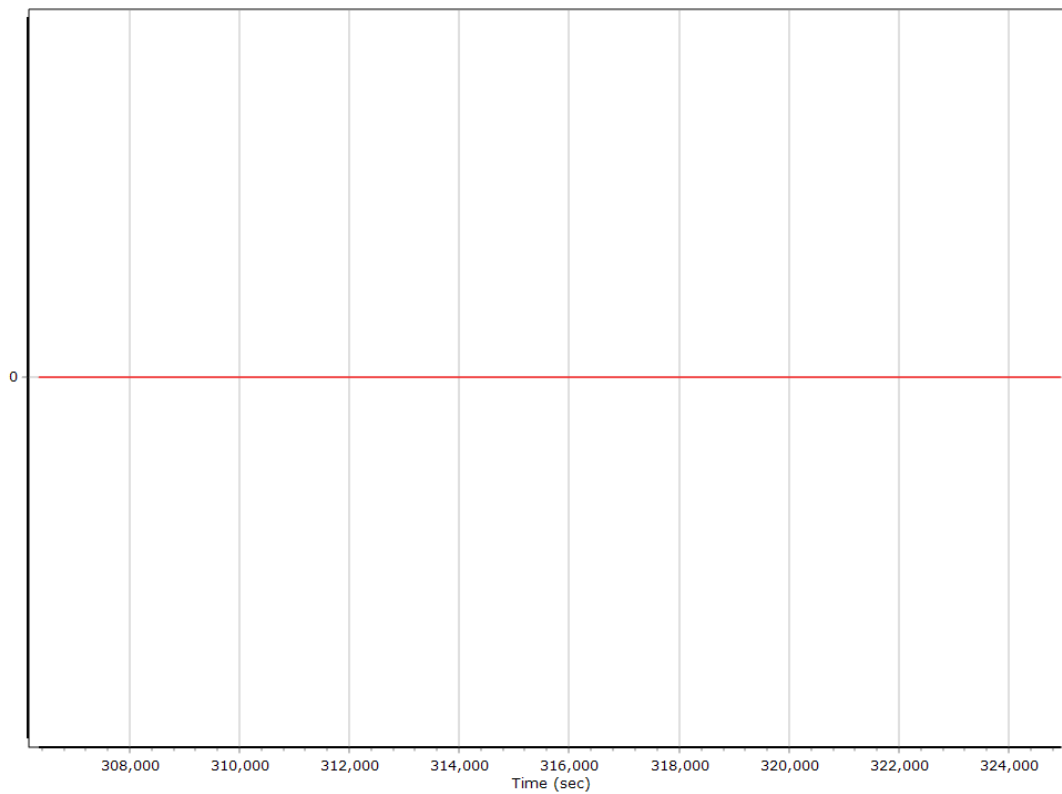
Y Reference-Primary GNSS Lever Arm (m)



Z Reference-Primary GNSS Lever Arm (m)



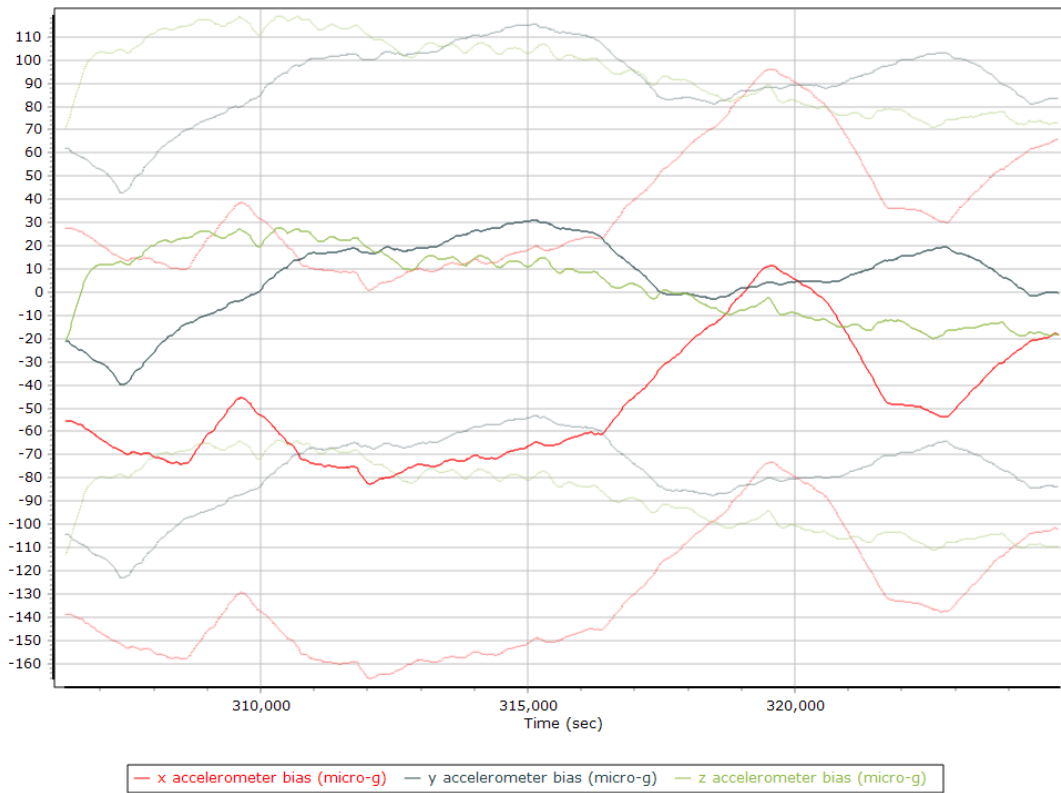
Reference-Primary GNSS Lever Arm Figure of Merit



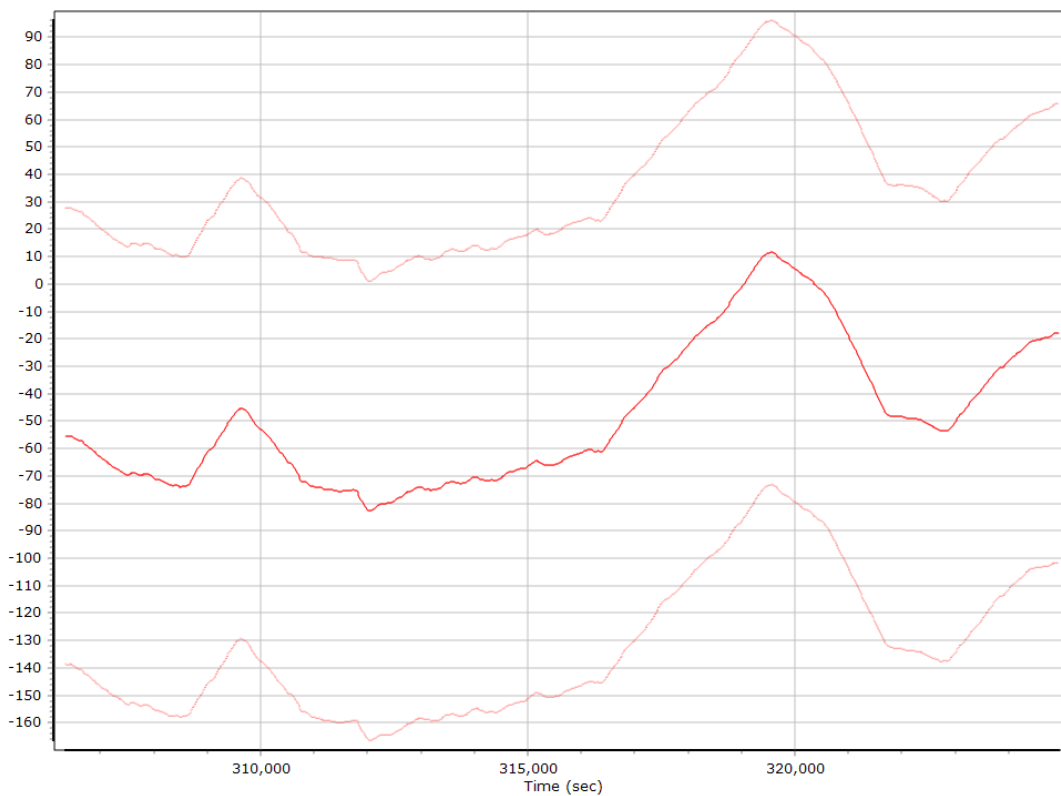
Smoothed IN-Fusion QC

Smoothed Estimated Errors, Reference Frame

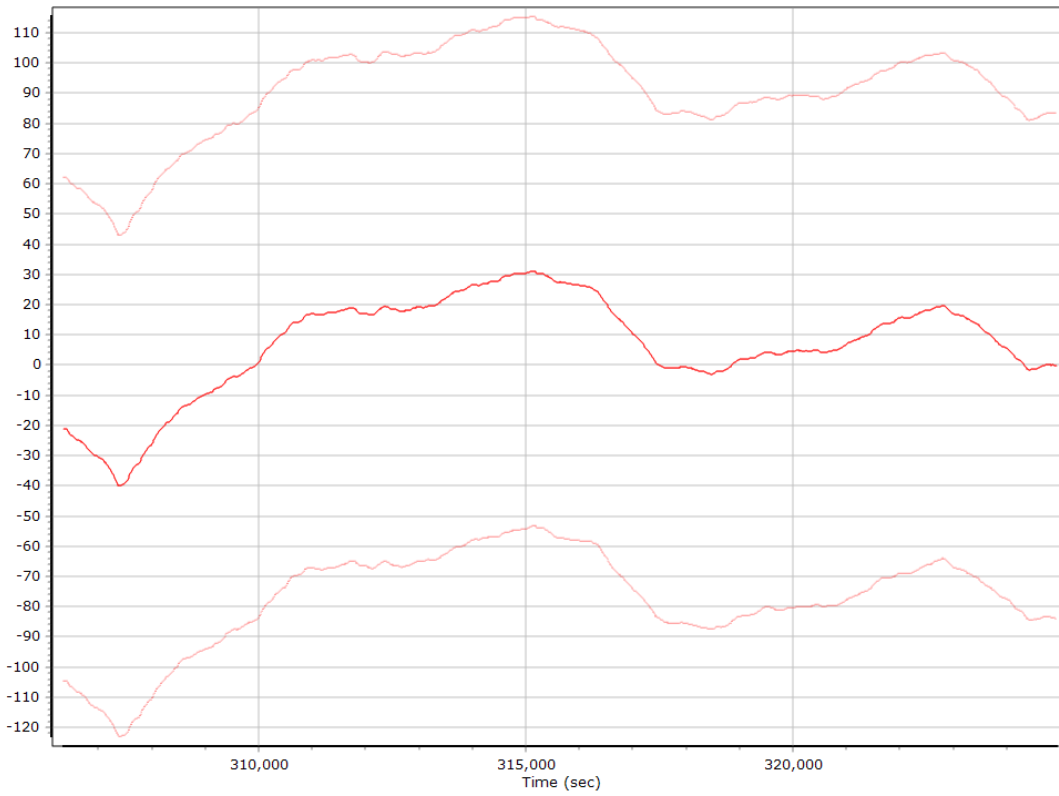
Accelerometer Bias (micro-g)



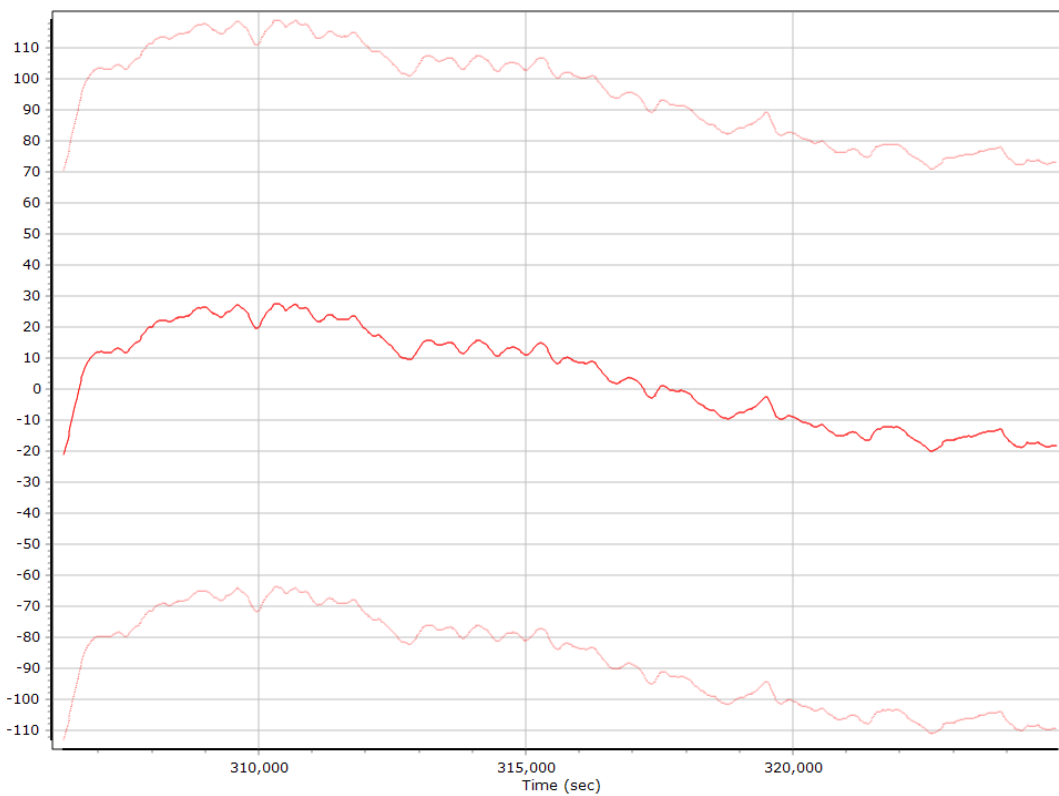
X Accelerometer Bias (micro-g)



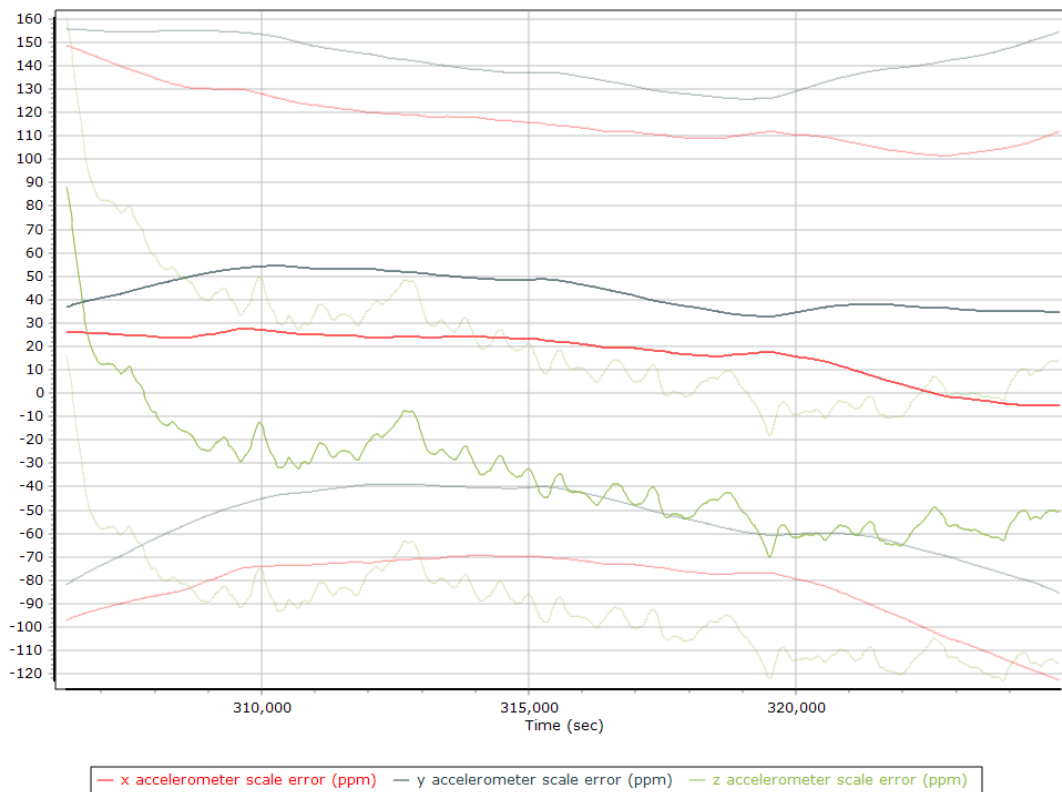
Y Accelerometer Bias (micro-g)



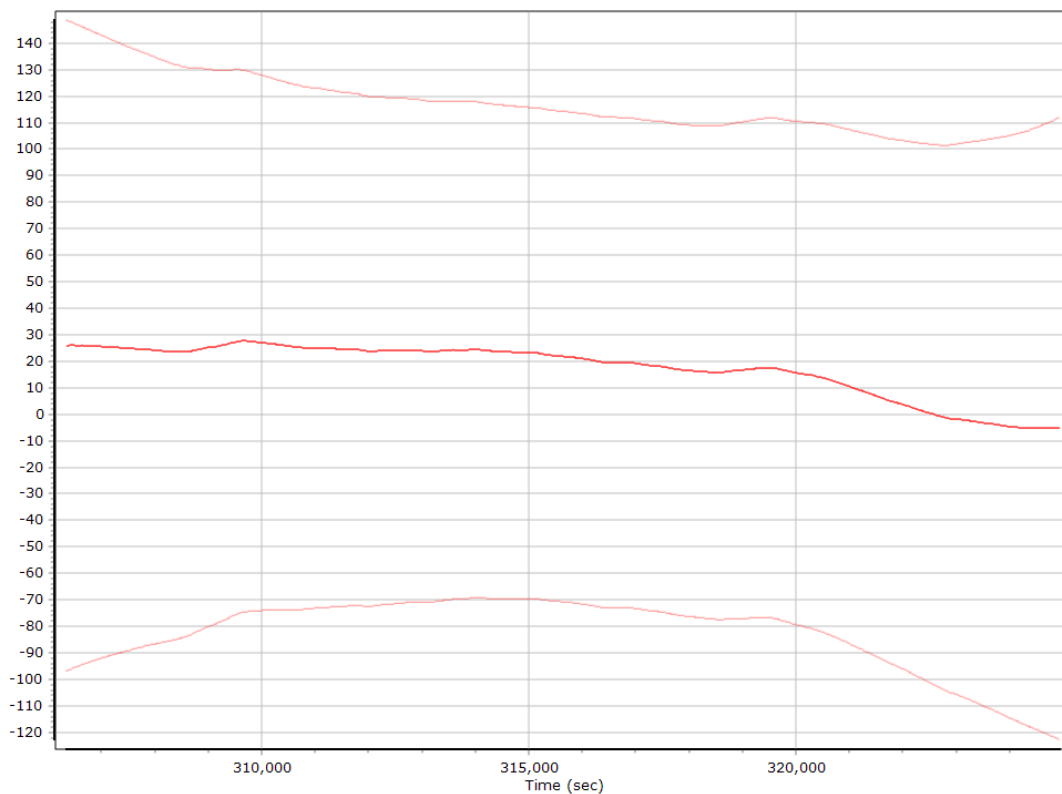
Z Accelerometer Bias (micro-g)



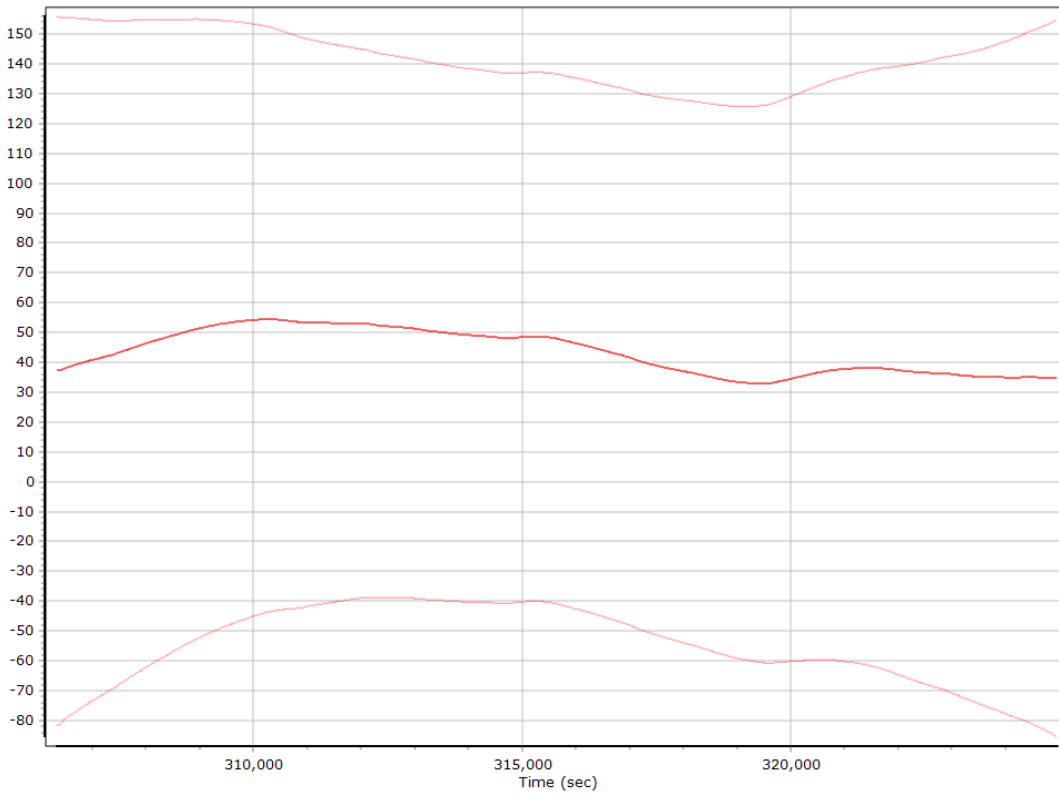
Accelerometer Scale Error (ppm)



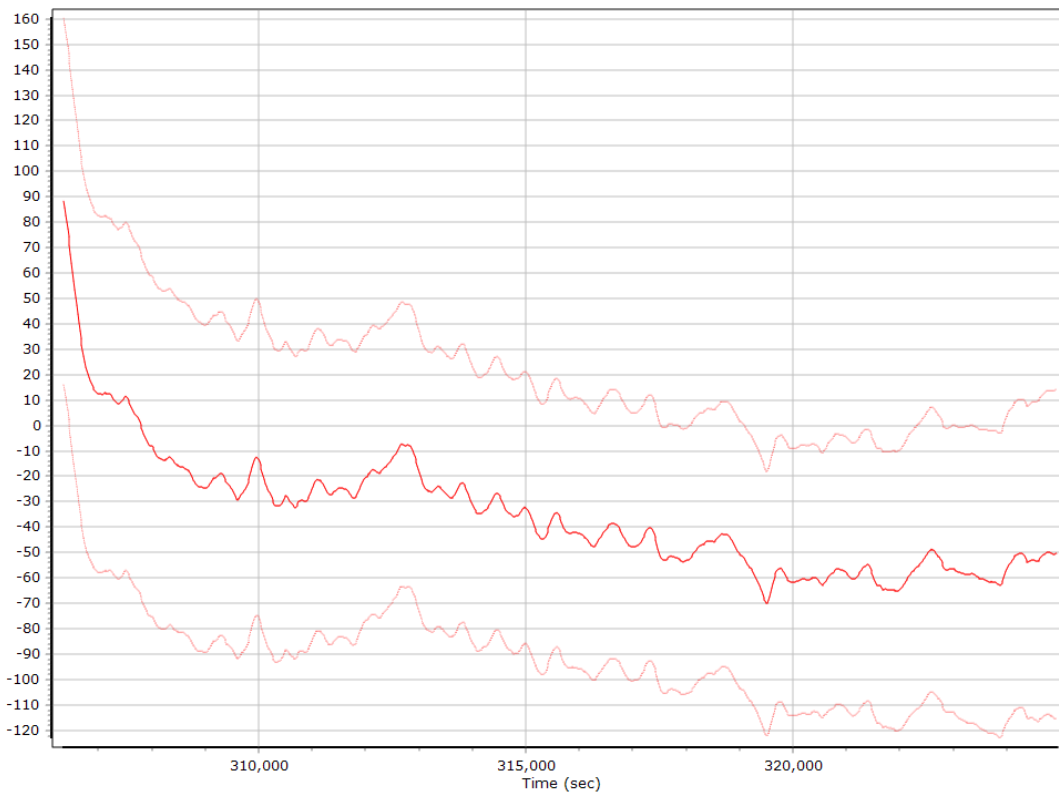
X Accelerometer Scale Error (ppm)



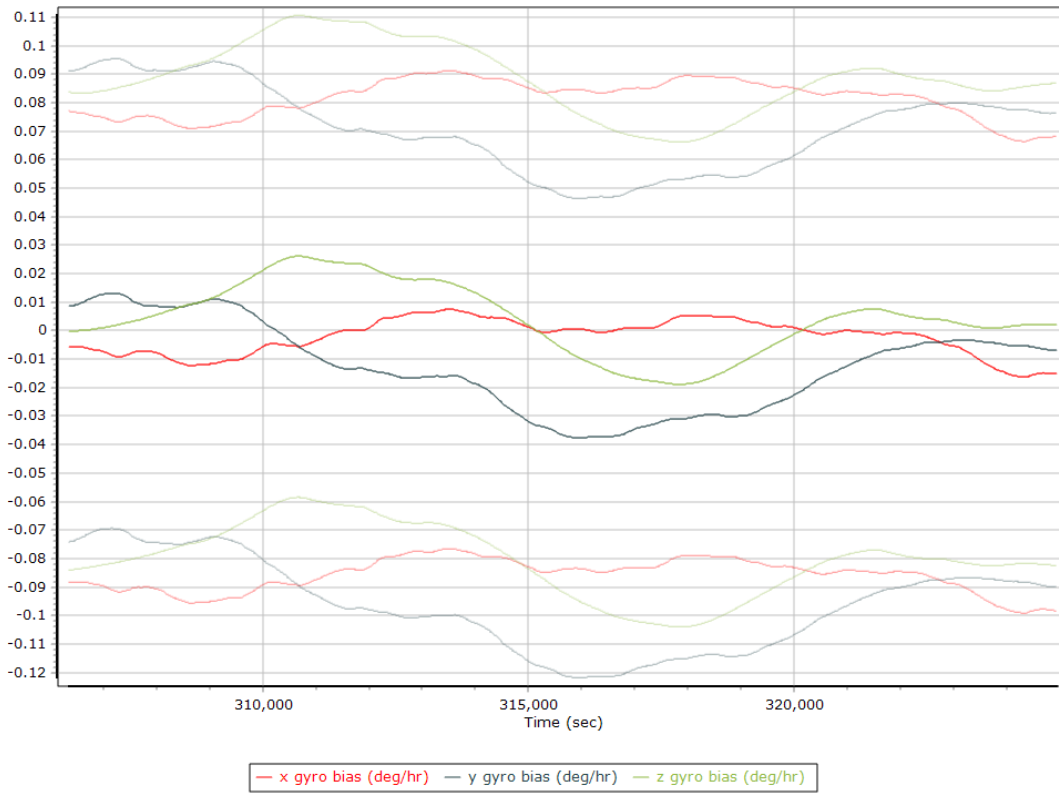
Y Accelerometer Scale Error (ppm)



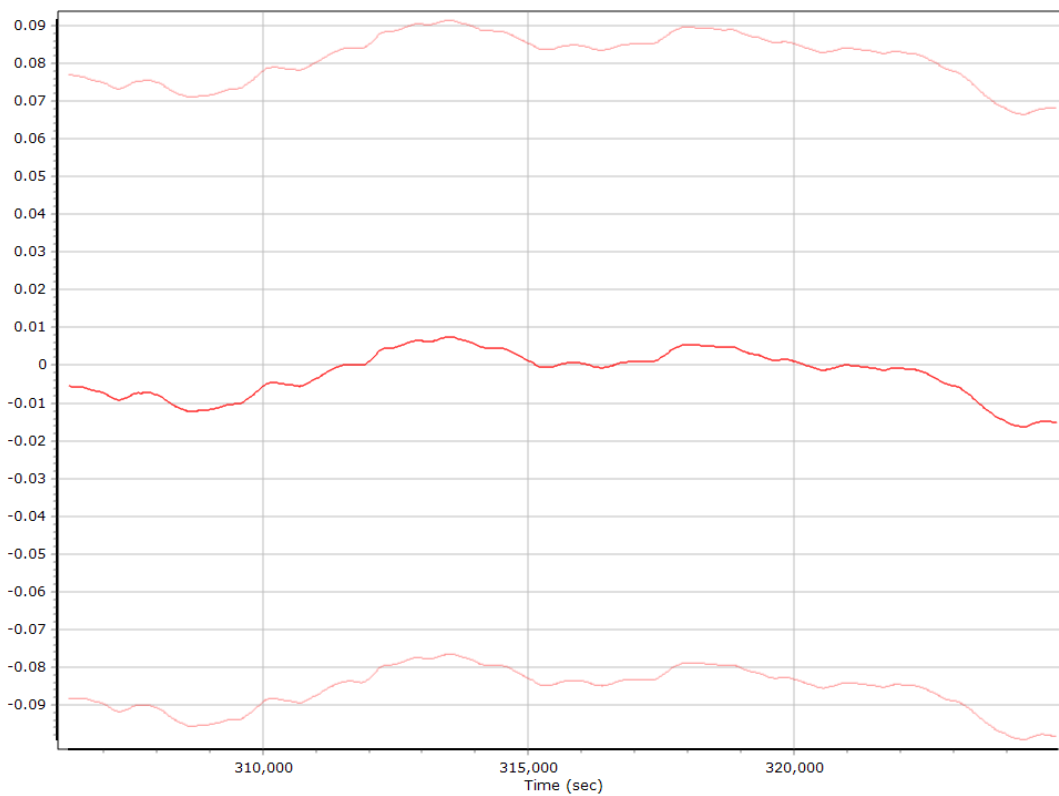
Z Accelerometer Scale Error (ppm)



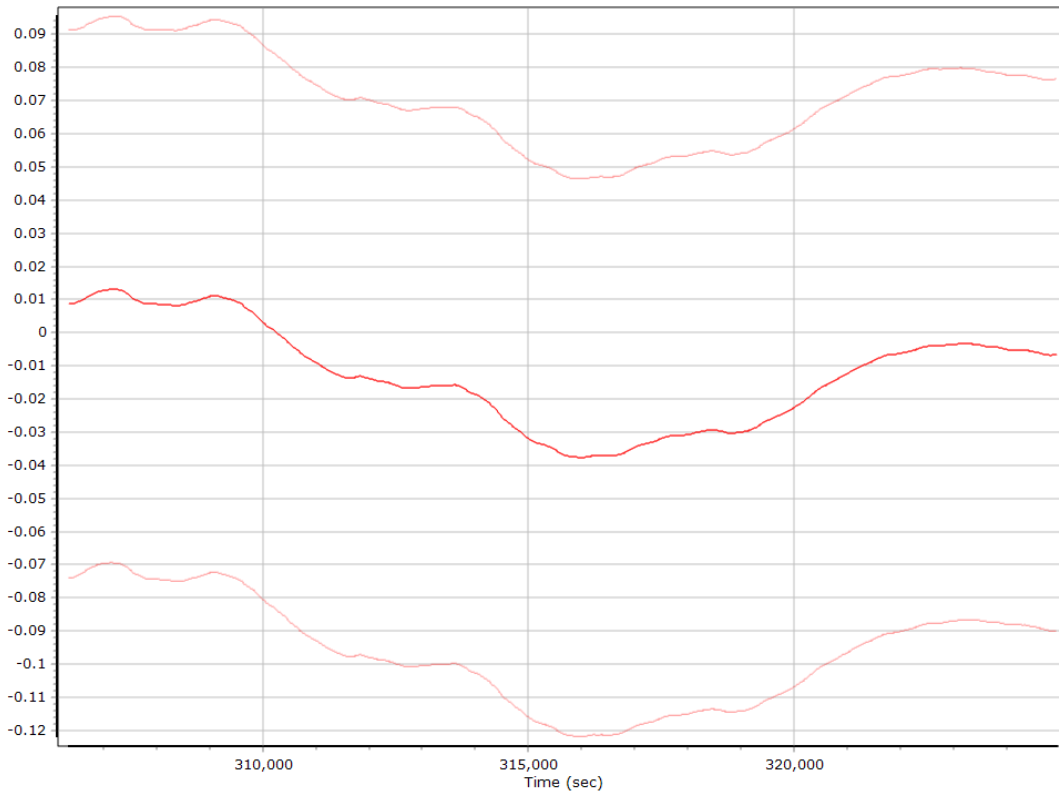
Gyro Bias (deg/h)



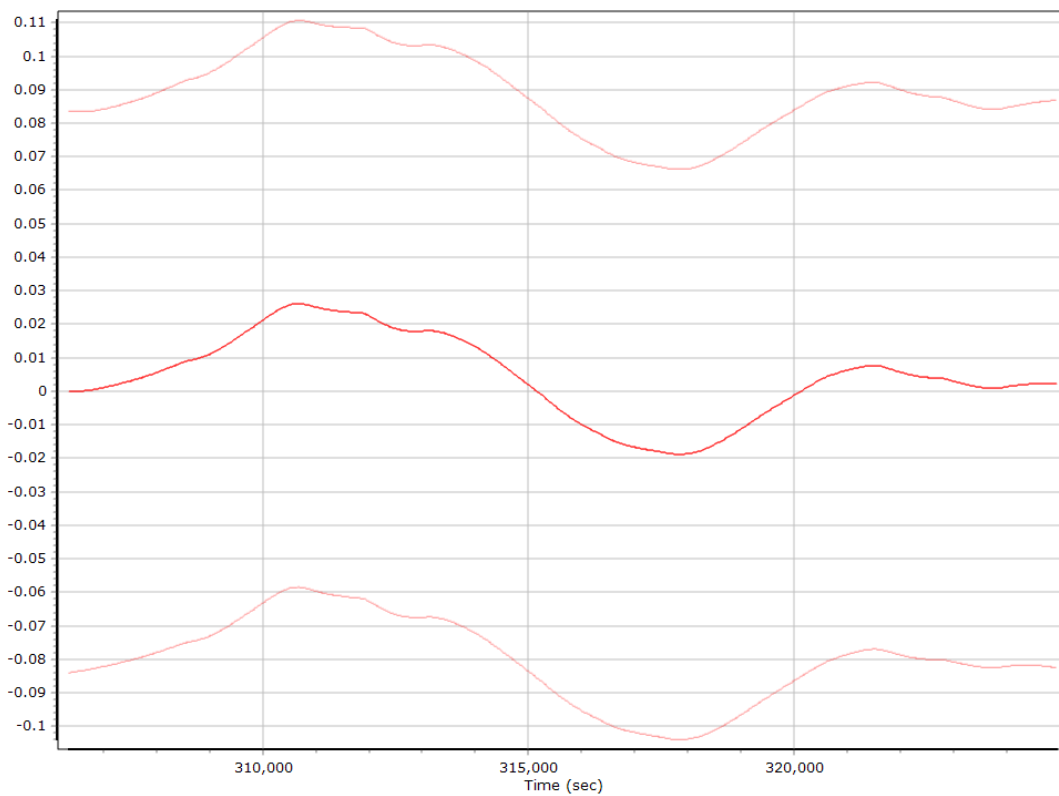
X Gyro Bias (deg/h)



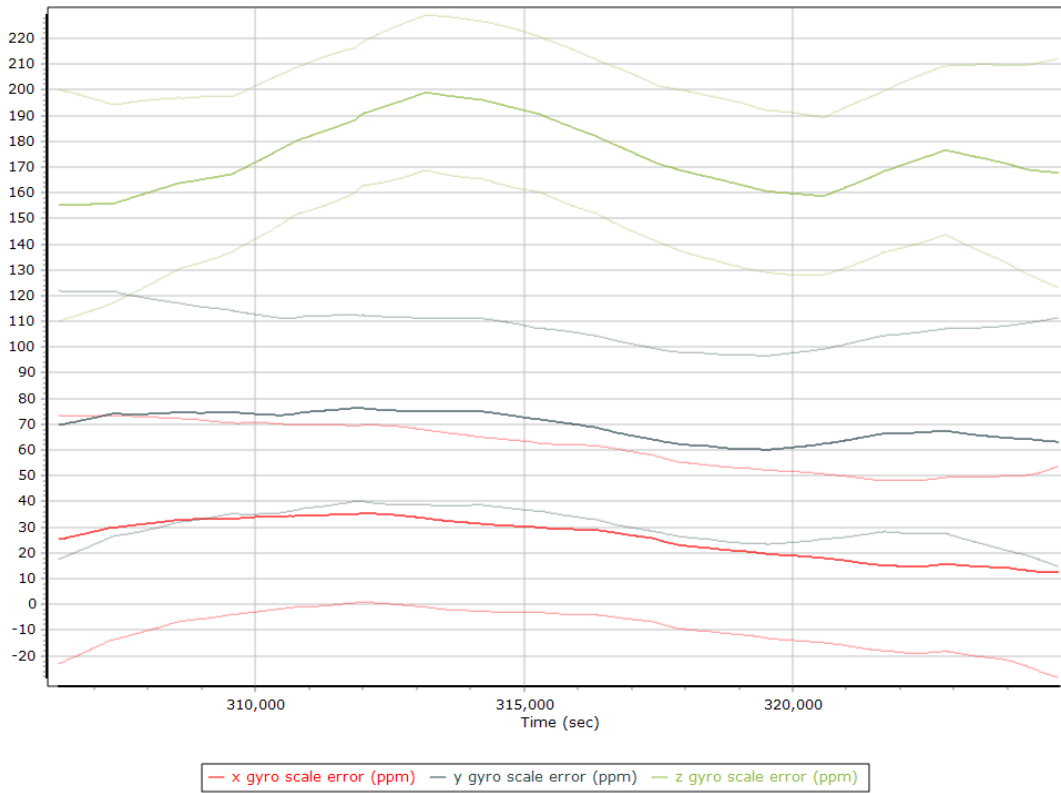
Y Gyro Bias (deg/h)



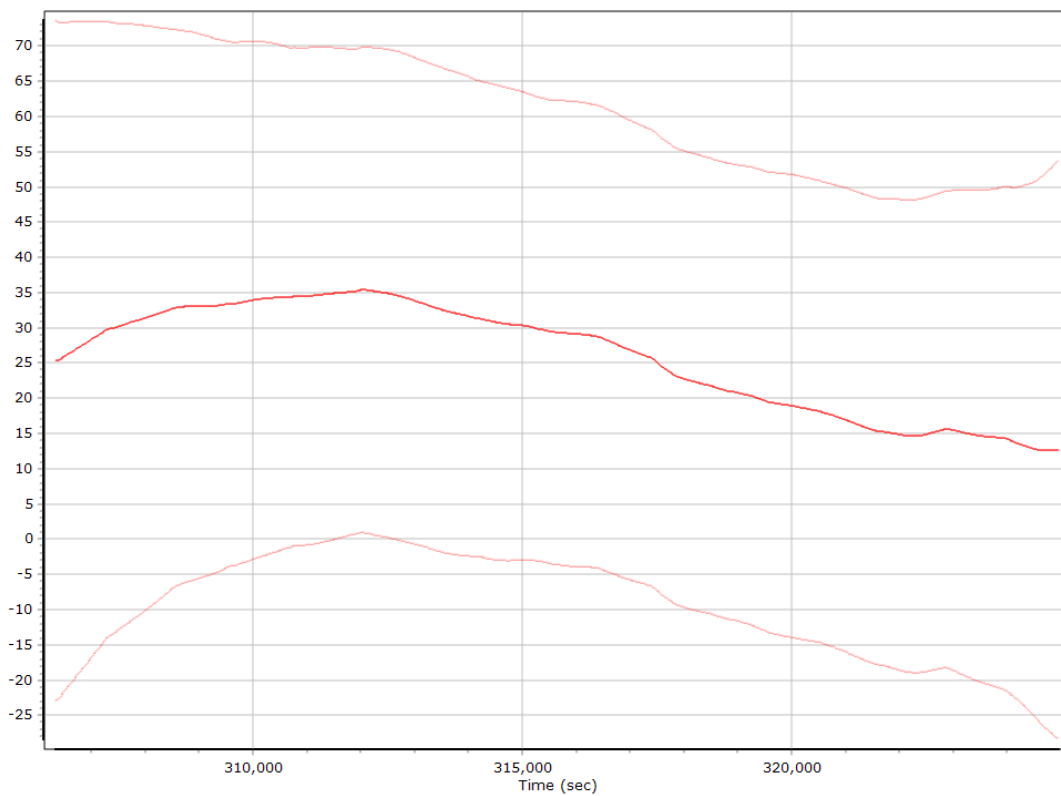
Z Gyro Bias (deg/h)



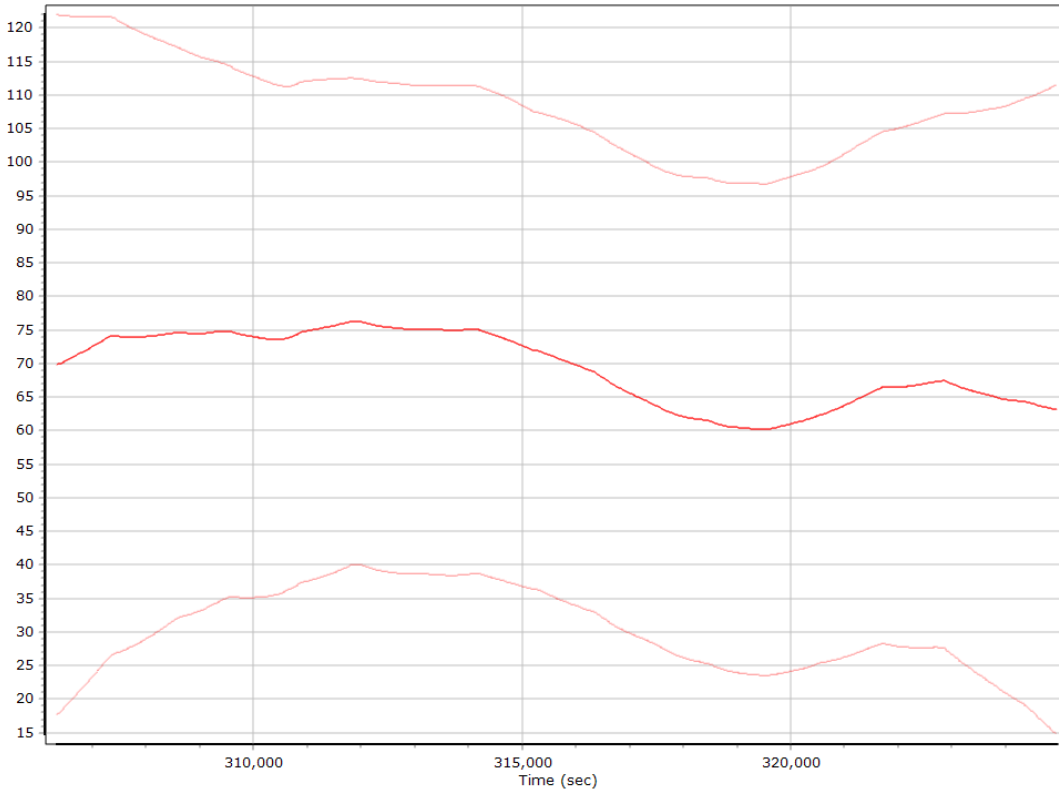
Gyro Scale Error (ppm)



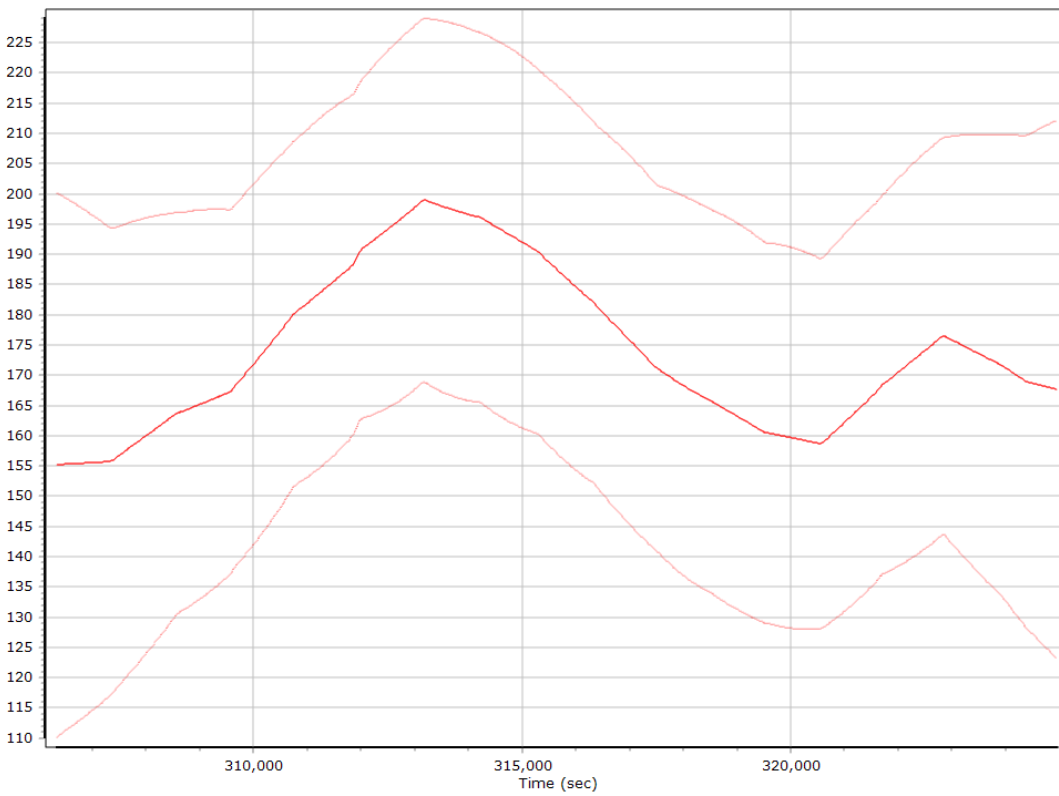
X Gyro Scale Error (ppm)



Y Gyro Scale Error (ppm)

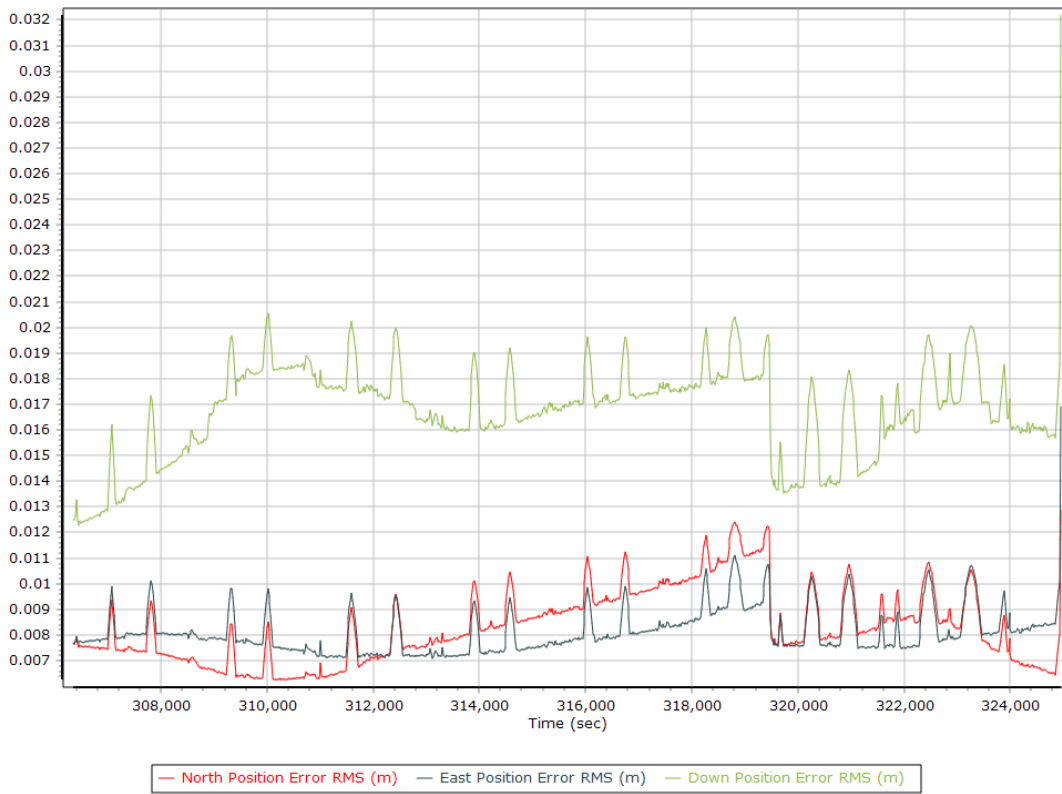


Z Gyro Scale Error (ppm)

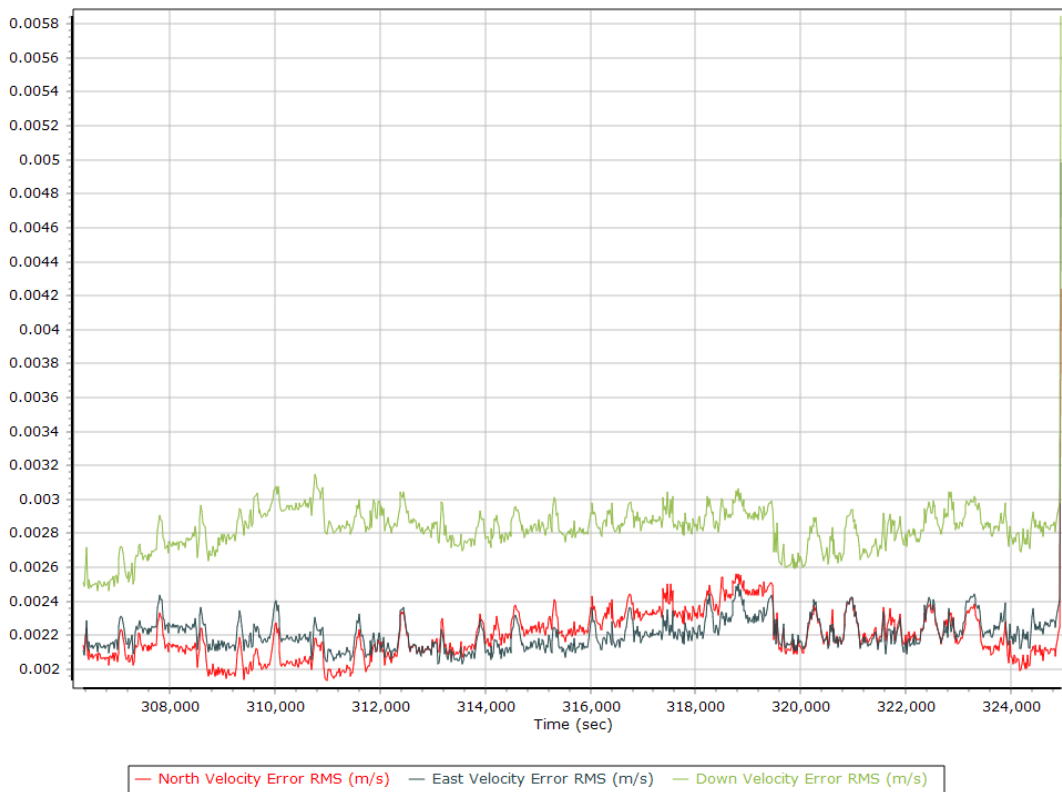


Smoothed Performance Metrics

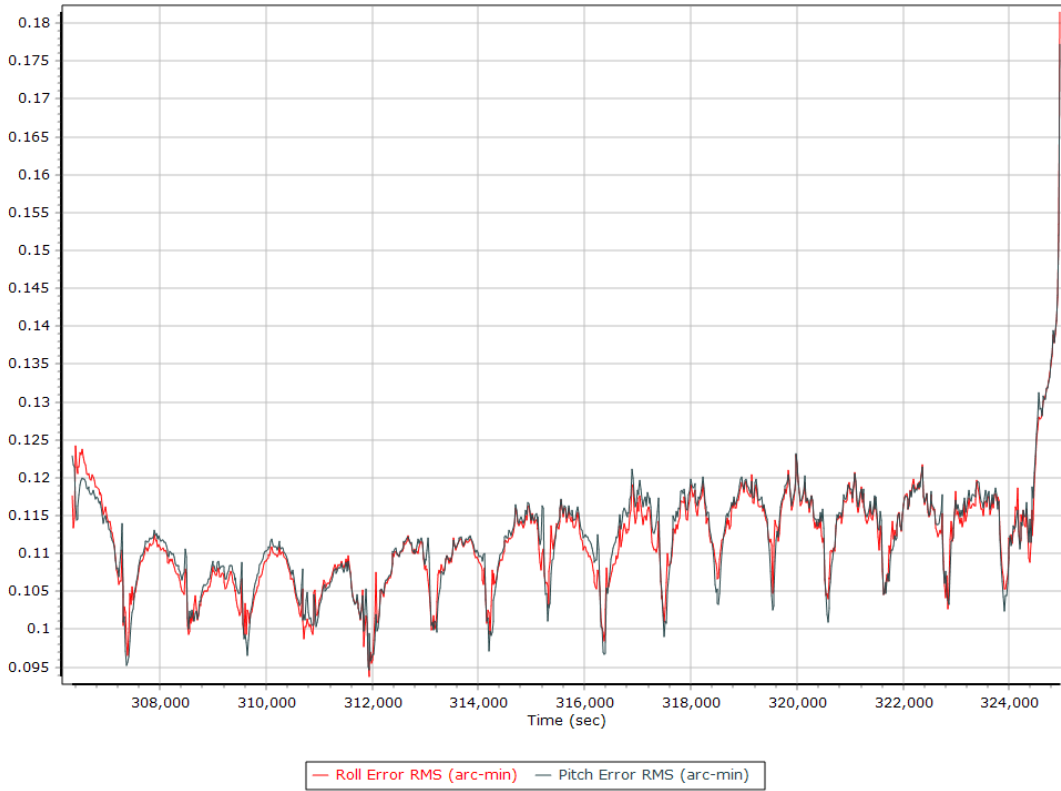
Position Error RMS (m)



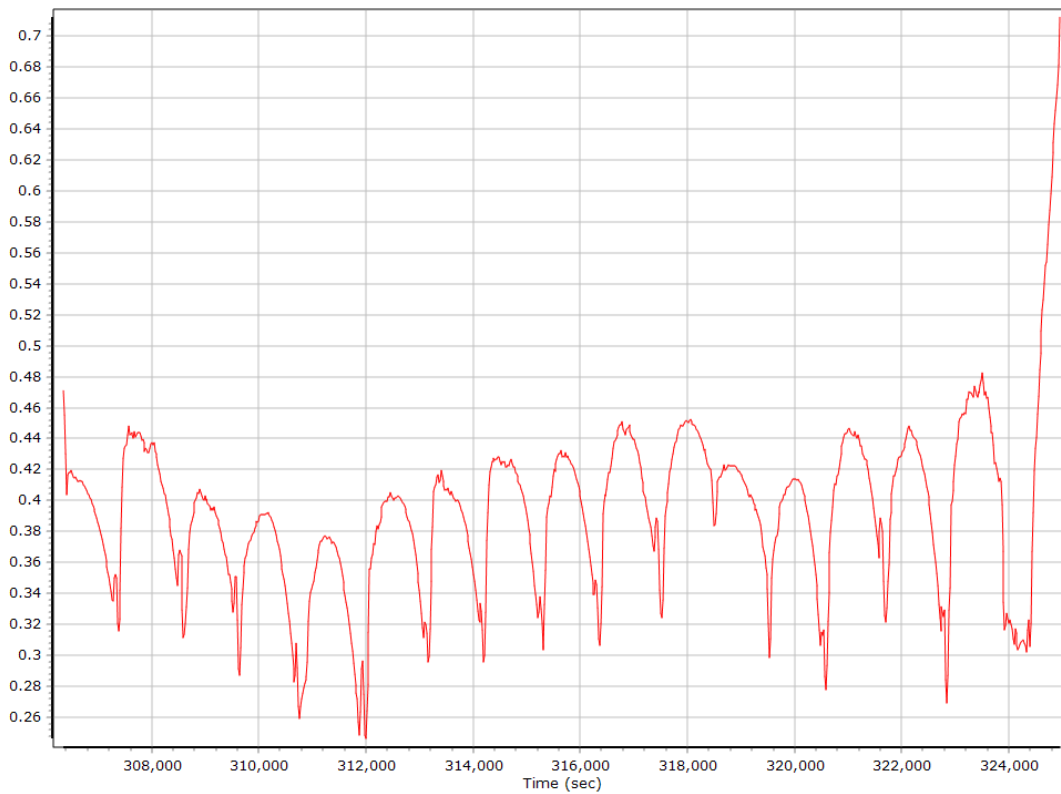
Velocity Error RMS (m/s)



Roll/Pitch Error RMS (arc-min)

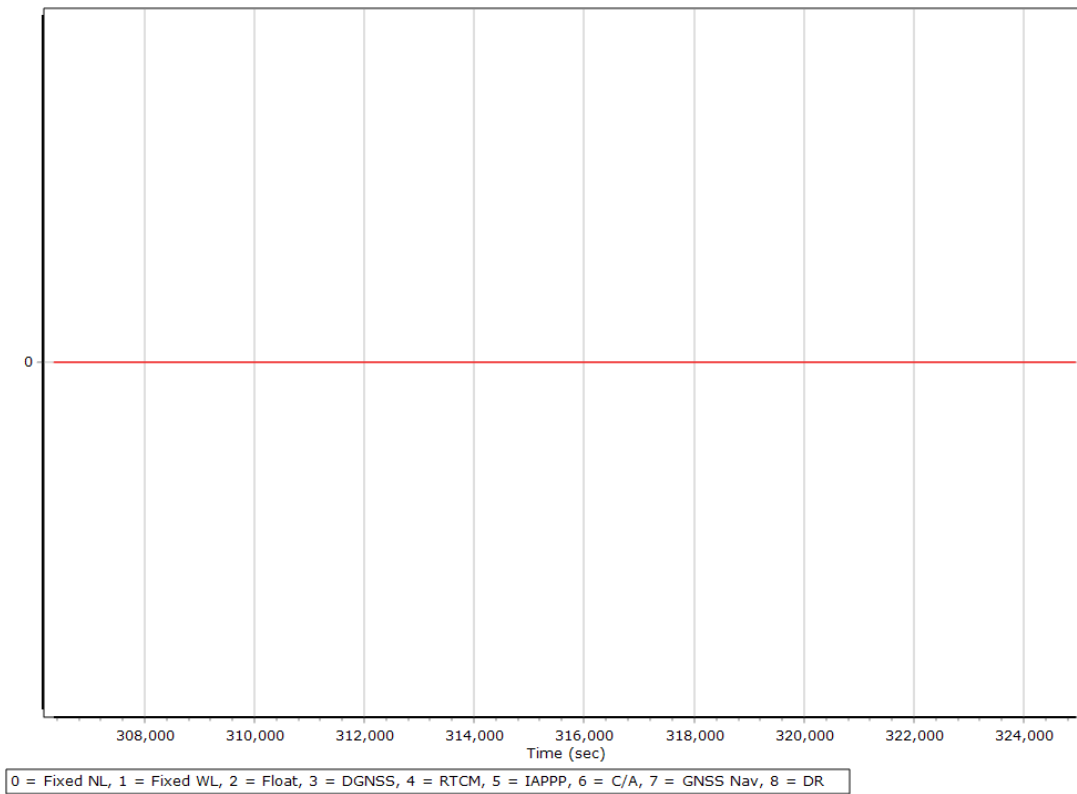


Heading Error RMS (arc-min)

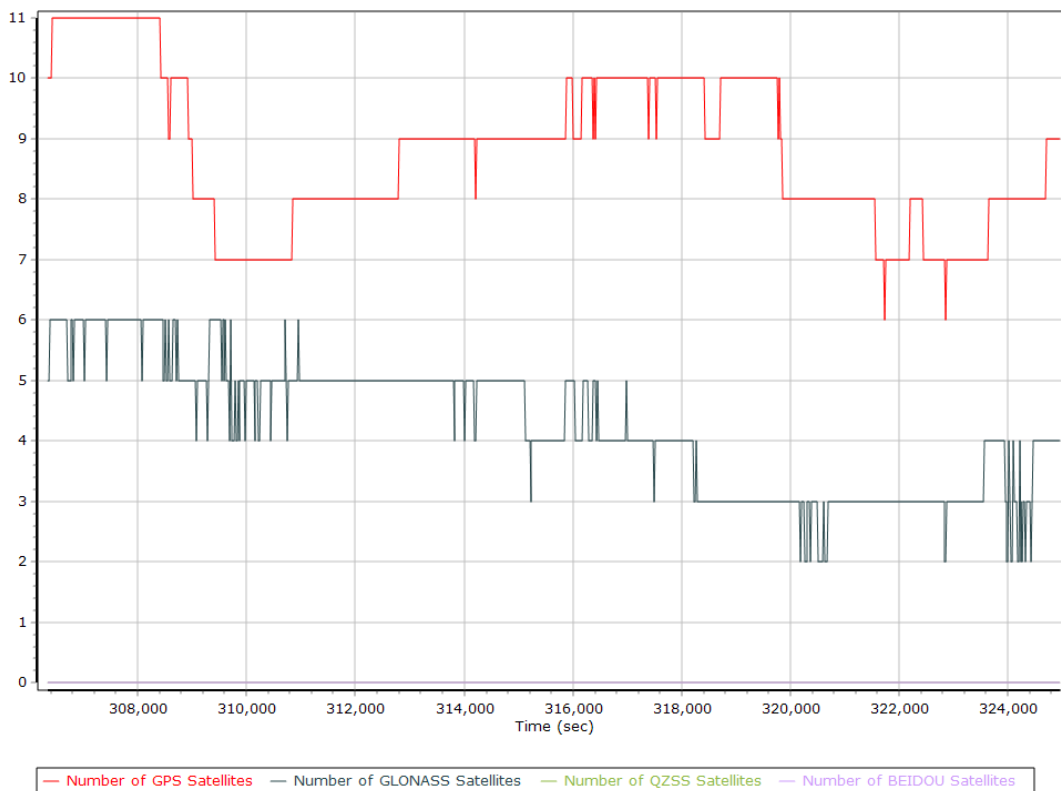


Smoothed Solution Status

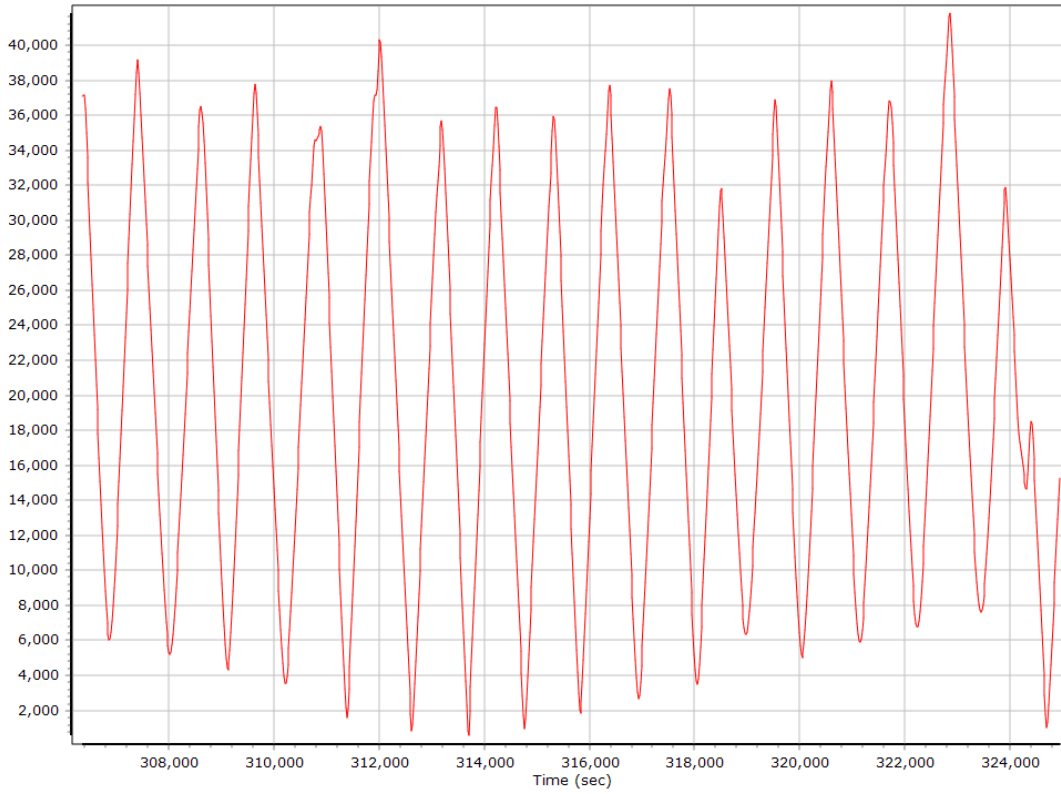
Processing Mode



Number of Satellites



Baseline Length



SBET IAkar Separation

