

General Information

Mission Information

Project name	
Processing date	2019-04-18 20:19:48
Mission date	2019-04-12 16:55:14
Mission duration	03:07:05.606
Processing mode	IN-Fusion SmartBase
GPS Station	ASB

Rover Hardware Information

Product	POS AV 610 VER6 HW2.5-12
Serial number	S/N8223
IMU type	57
Receiver type	BD982
Antenna type	AV37

Project File List

Rover Data Files

File name	File type
190412_165513_INS-GPS_1.raw	POS Data

Input Files

File Name	File type
bkv1102r00.19o.gps+glo.rnx2	GNSS SingleBase
dlnd102r00.19o.gps+glo.rnx2	GNSS SingleBase
dunn102r00.19o.gps+glo.rnx2	GNSS SingleBase
flbn102r00.19o.gps+glo.rnx2	GNSS SingleBase
fldc102r00.19o.gps+glo.rnx2	GNSS SingleBase
fleu102r00.19o.gps+glo.rnx2	GNSS SingleBase
flhs102r00.19o.gps+glo.rnx2	GNSS SingleBase
flwd102r00.19o.gps+glo.rnx2	GNSS SingleBase
ocla102r00.19o.gps+glo.rnx2	GNSS SingleBase
orl1102r00.19o.gps+glo.rnx2	GNSS SingleBase
polk102r00.19o.gps+glo.rnx2	GNSS SingleBase
snfd102r00.19o.gps+glo.rnx2	GNSS SingleBase
zefr102r00.19o.gps+glo.rnx2	GNSS SingleBase
igr20484.sp3	GPS Precise Ephemeris
igr20485.sp3	GPS Precise Ephemeris
igr20486.sp3	GPS Precise Ephemeris
Ephm1020.19g	GLONASS Broadcast Ephemeris
Ephm1020.19n	GPS Broadcast Ephemeris

Output Files

Filename	File type
sbt_Mission 1.out	SBET Trajectory File

Rover Data Summary

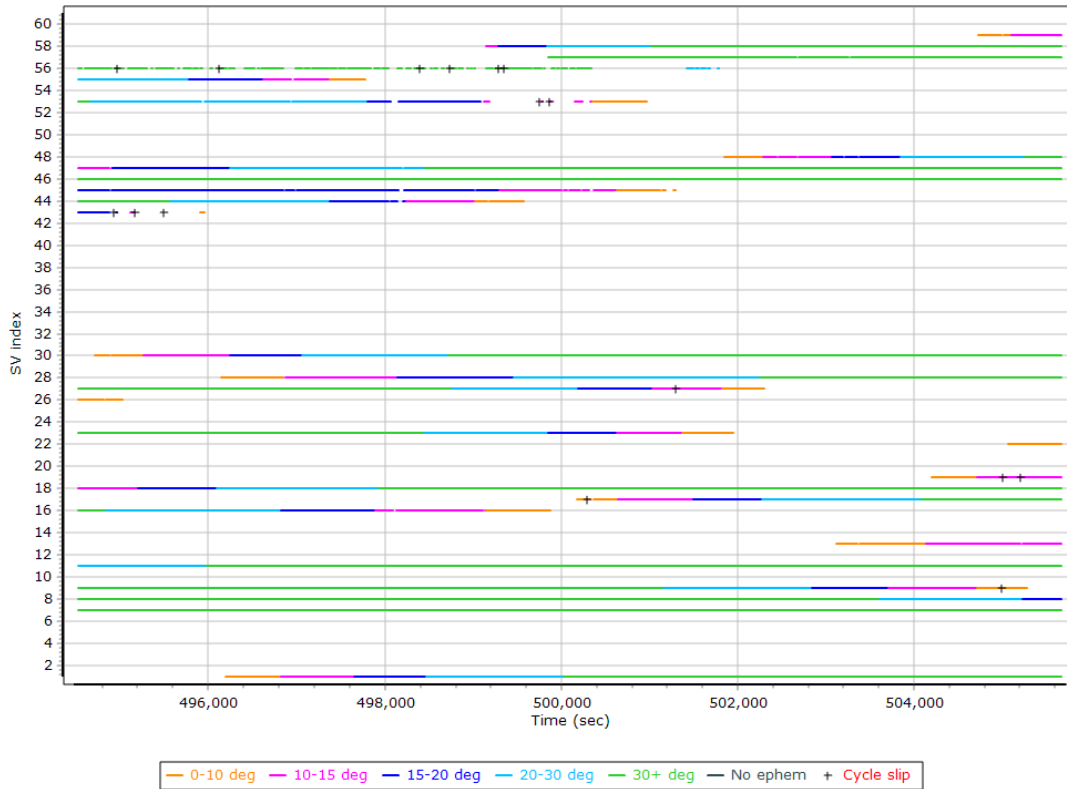
First raw data file	190412_165513_INS-GPS_1.raw		
Last raw data file	190412_165513_INS-GPS_1.raw		
Start GPS week	2048		
Start time	494447.851 (4/12/2019 5:20:29 PM)		
End time	505673.457 (4/12/2019 8:27:35 PM)		
Start of fine alignment	494467.666 (4/12/2019 5:20:49 PM)		
Available subsystems	Primary GNSS, IMU		
POS Event Input	None		
Correction data	None		
IMU Installation Lever Arms & Mounting Angles			
Reference to IMU lever arm [m]	0.000	0.000	0.000
Reference to IMU mounting angles [deg]	0.000	0.000	0.000
Reference to Primary GNSS lever arm [m]	0.080	-0.198	-0.950
Reference to Primary GNSS lever arm std dev [m]	-1.000		
Aircraft to Reference mounting angles [deg]	0.000	0.000	0.000

Raw Data QC

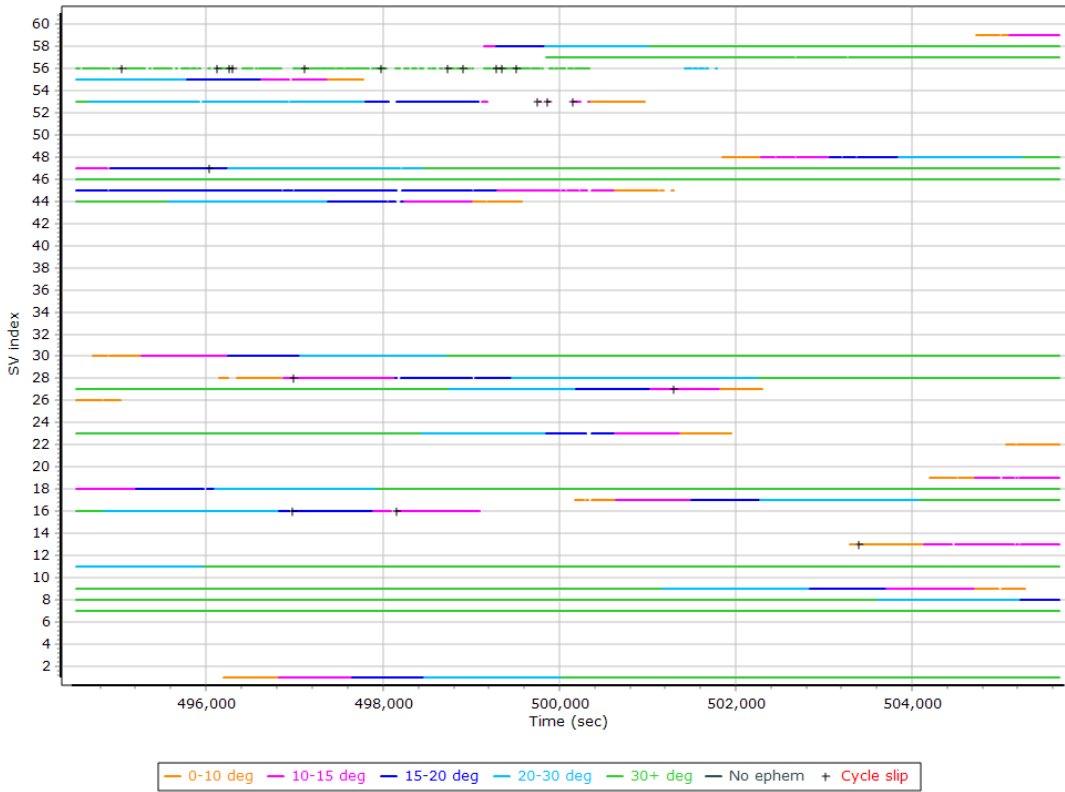
Raw IMU Import QC Summary

IMU data input file	imu_Mission 1.dat
IMU data check log file	imudt_Mission 1.log
IMU Records Processed	2244800
Termination Status	Normal
IMU Anomalies	0

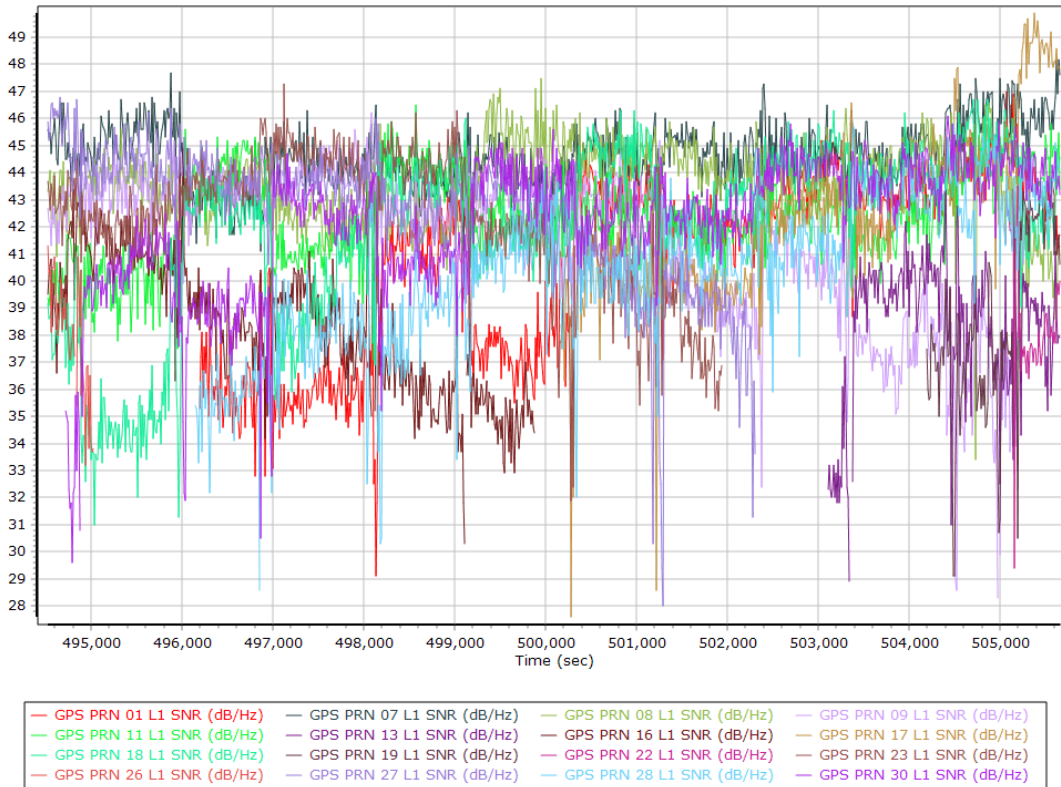
L1 Satellite Lock/Elevation



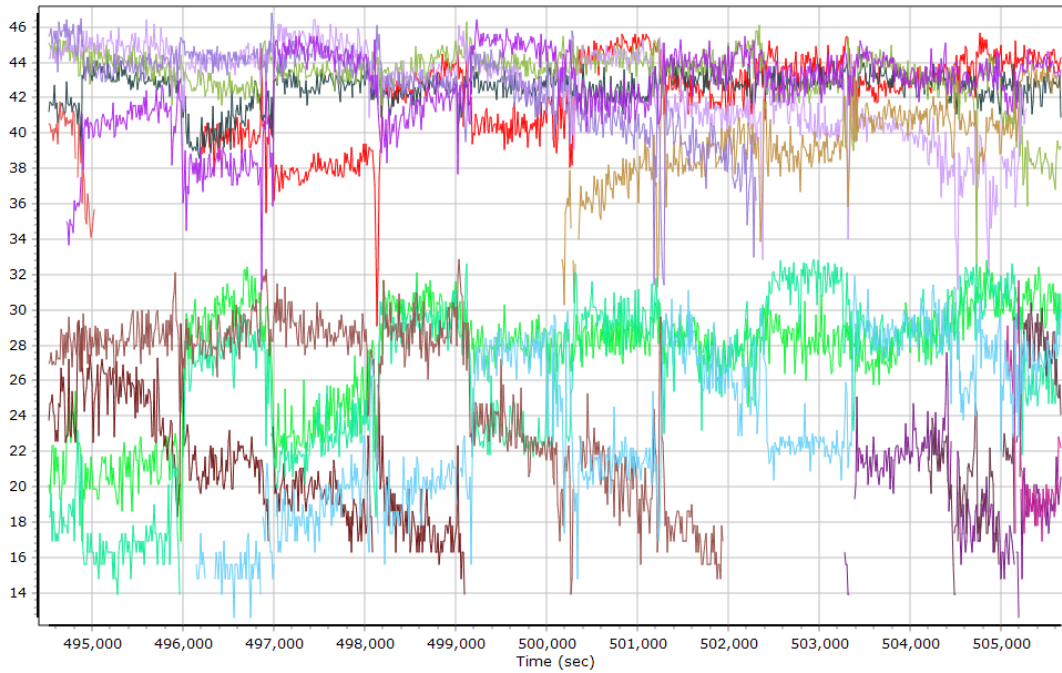
L2 Satellite Lock/Elevation



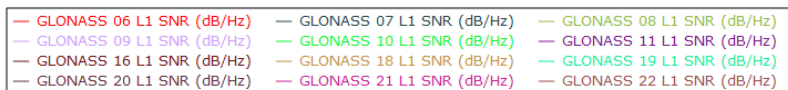
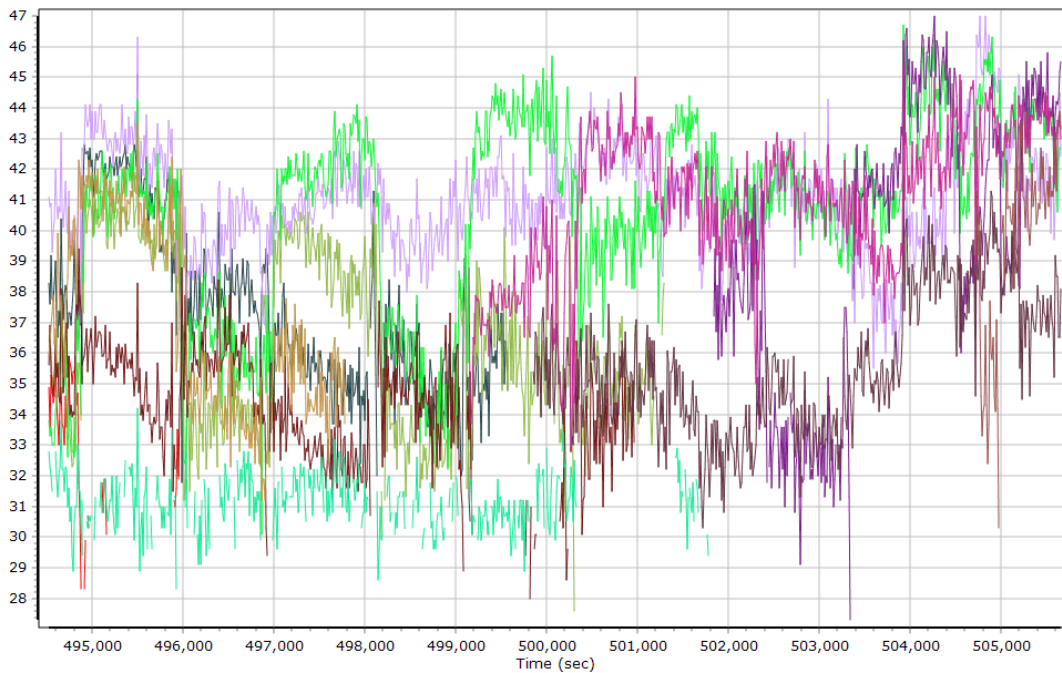
GPS L1 SNR



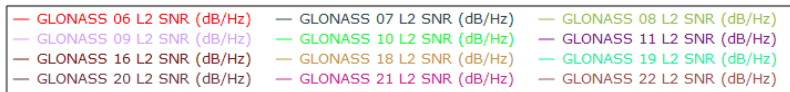
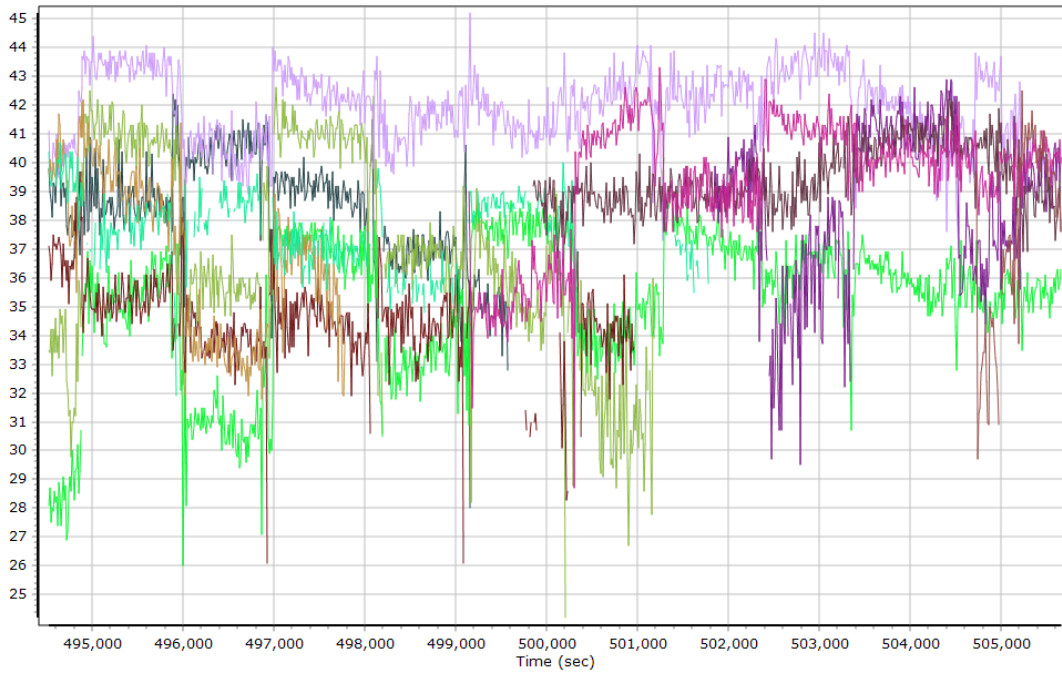
GPS L2 SNR



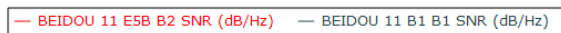
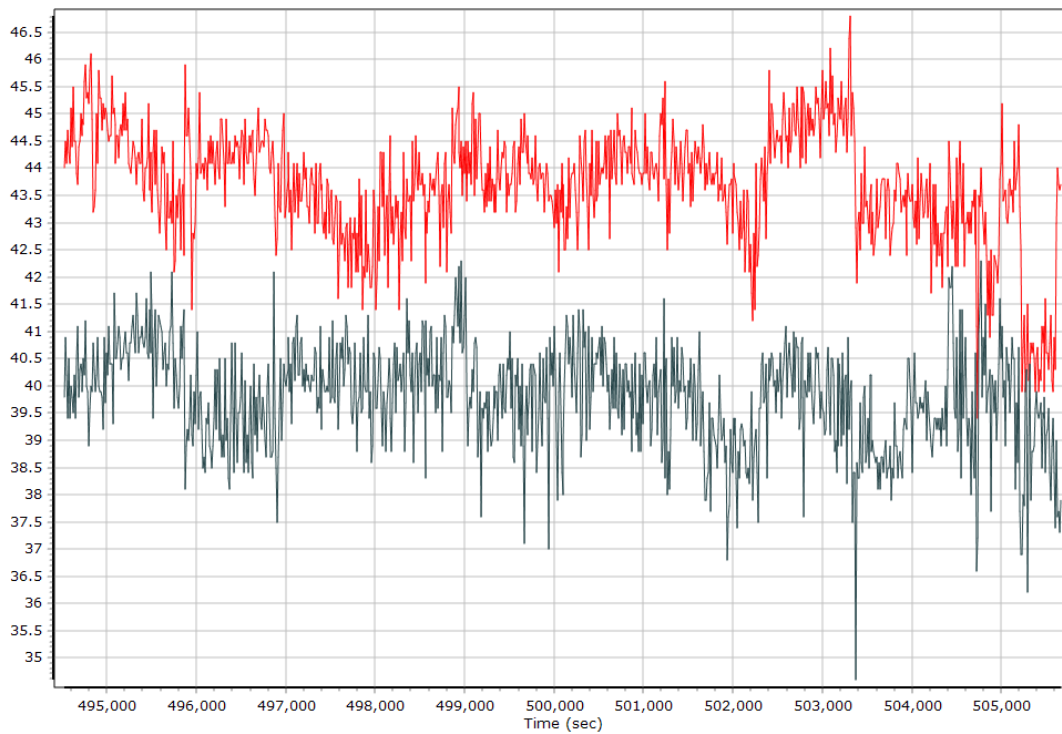
GLONASS L1 SNR



GLONASS L2 SNR

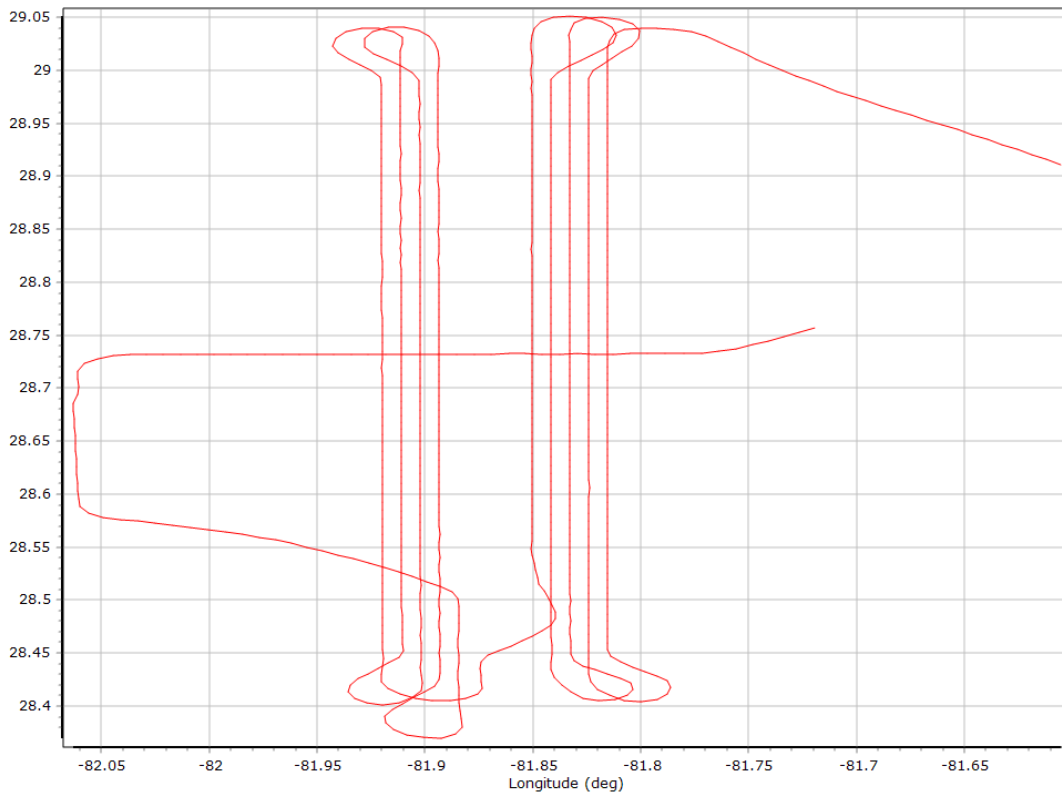


BEIDOU SNR

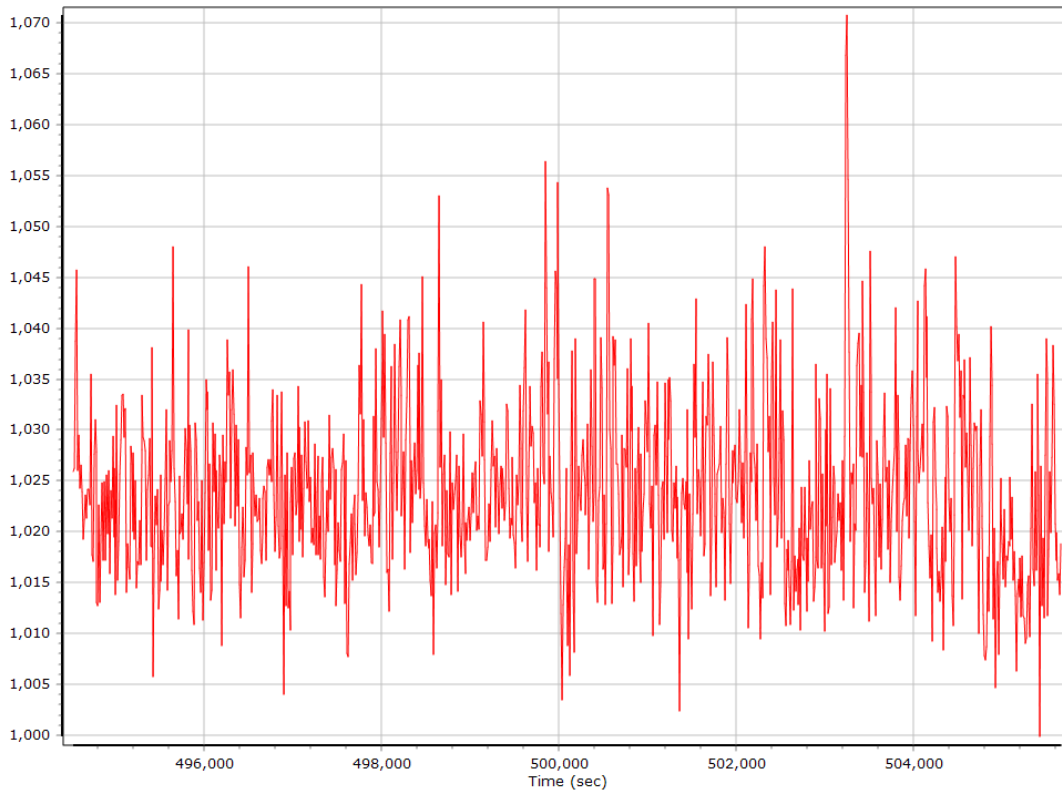


Trajectory Information

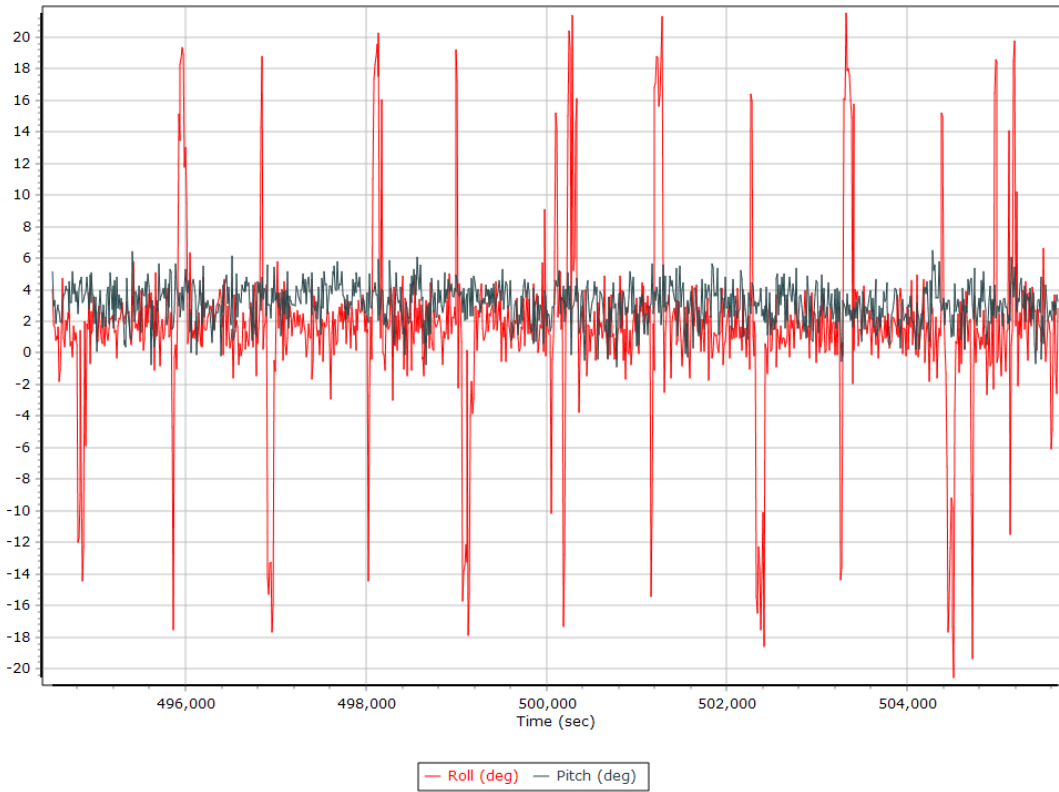
Top View



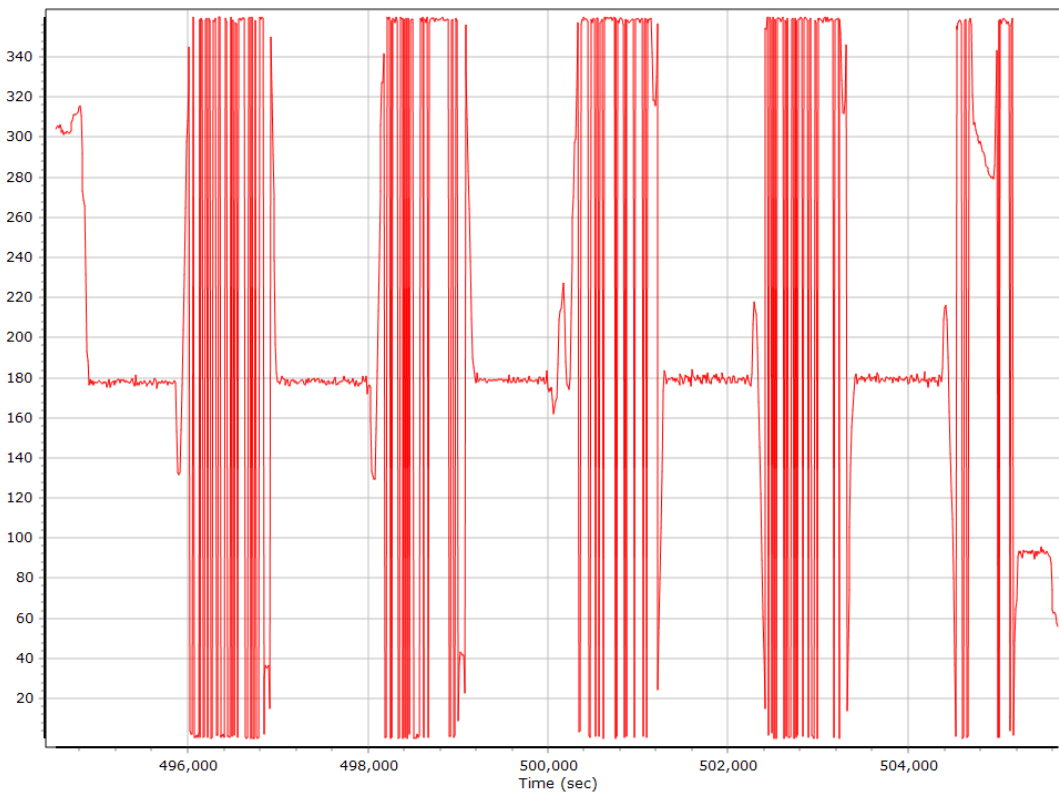
Altitude



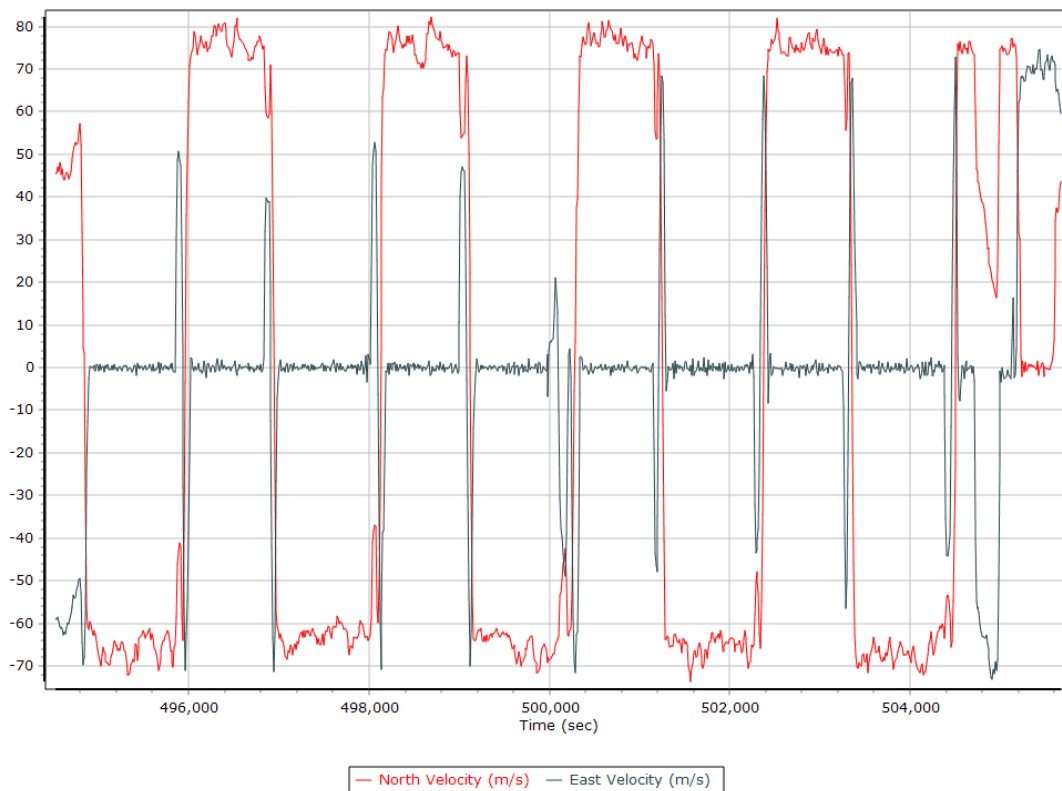
Roll/Pitch



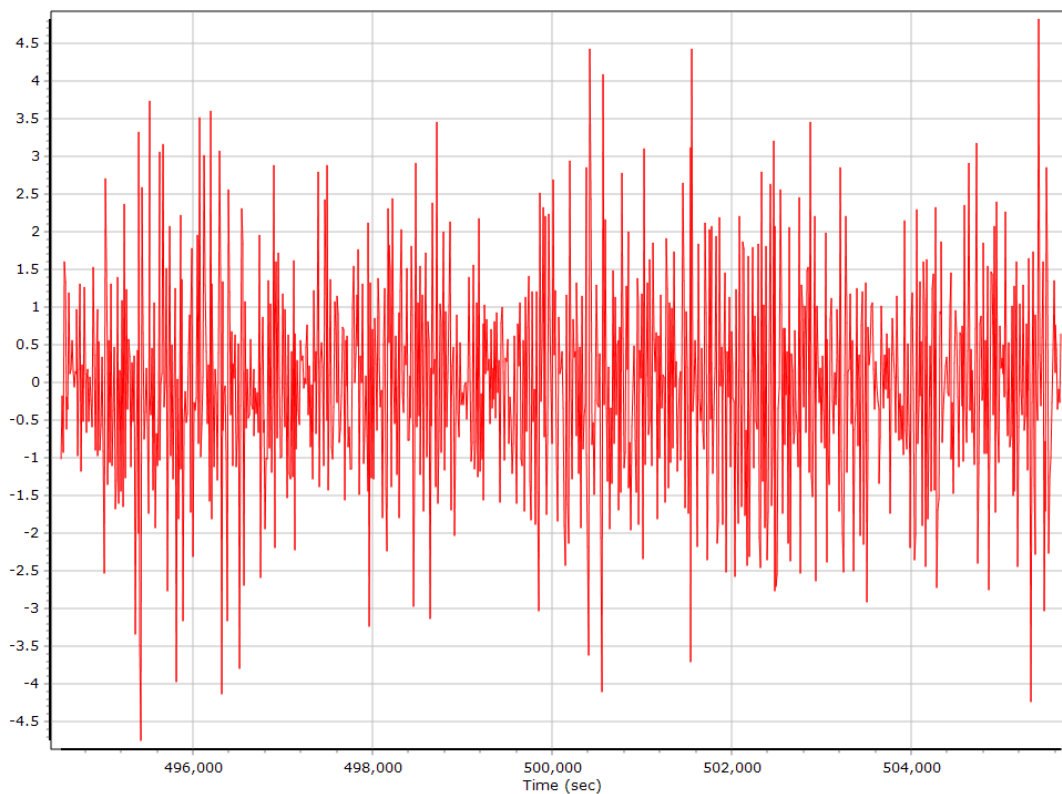
Heading



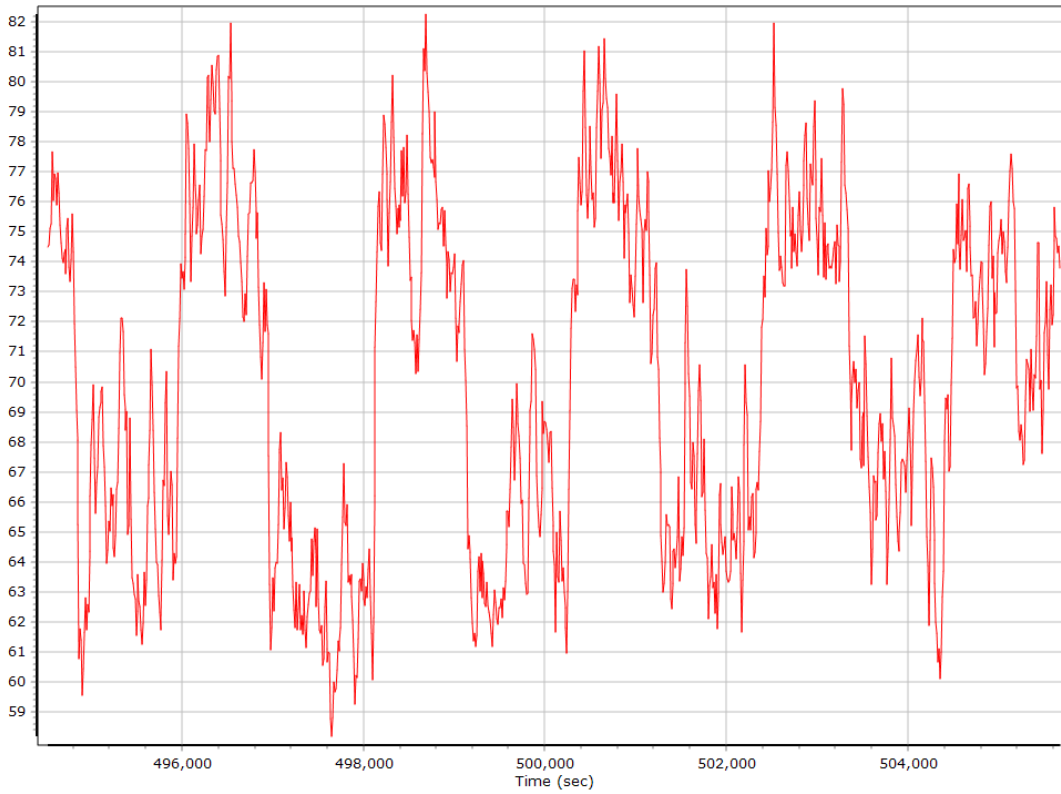
North/East Velocity



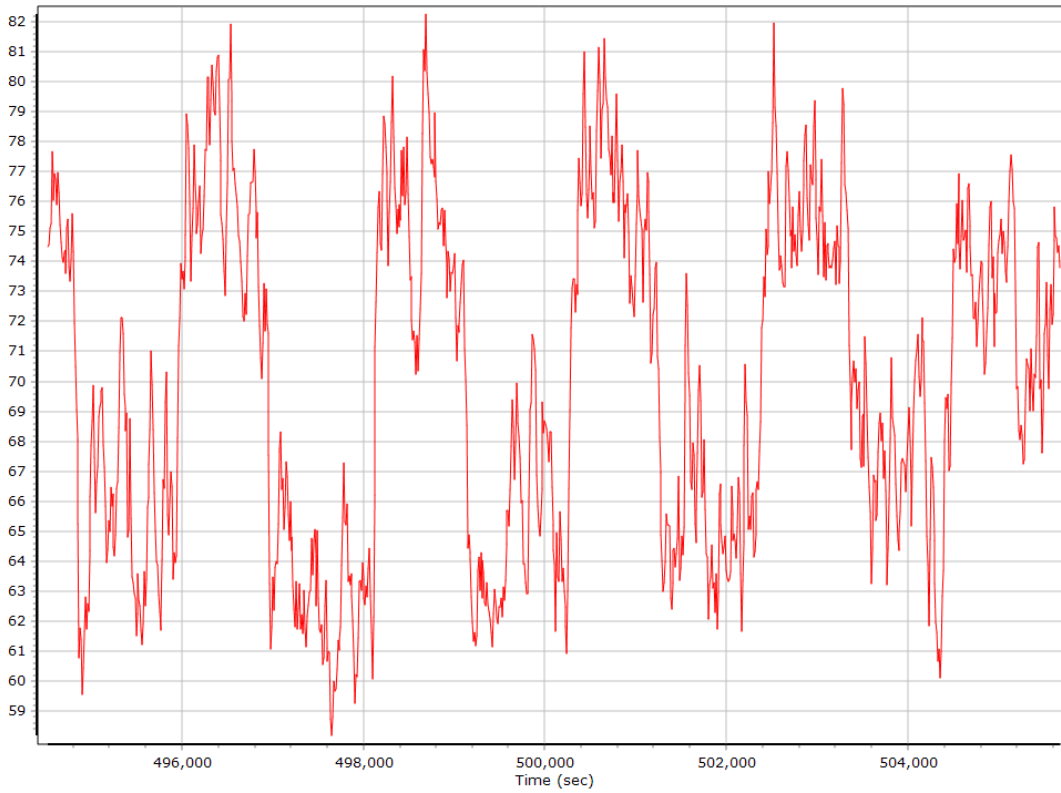
Down Velocity



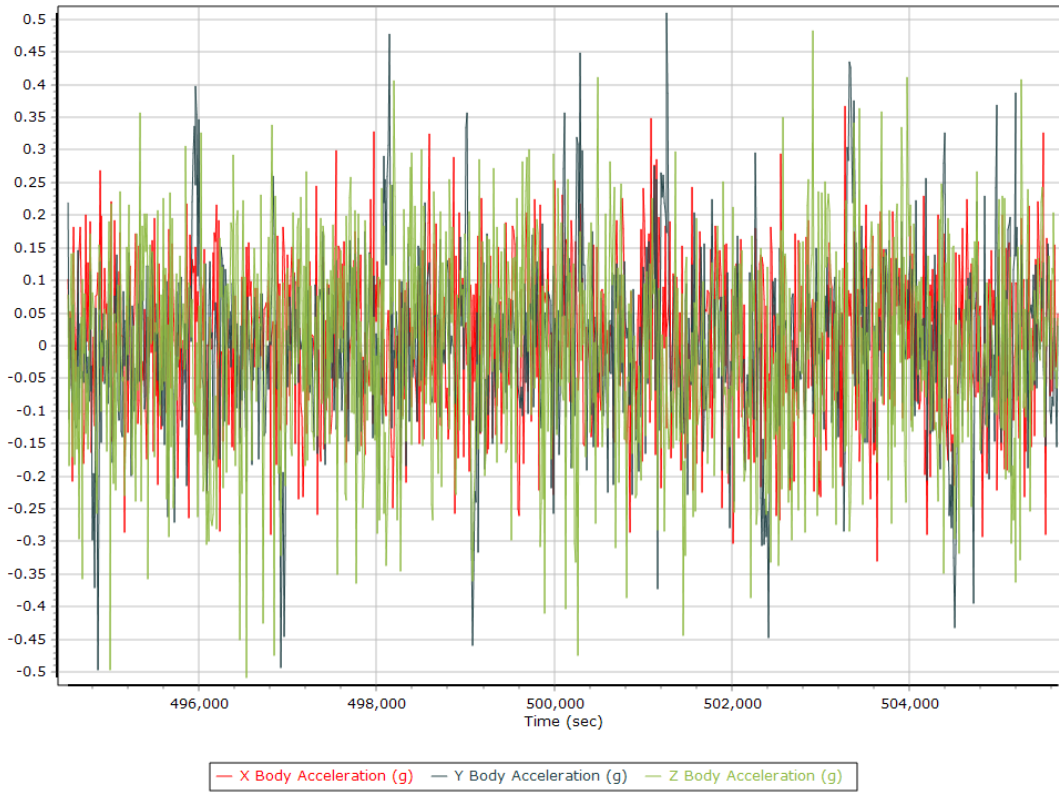
Total Speed



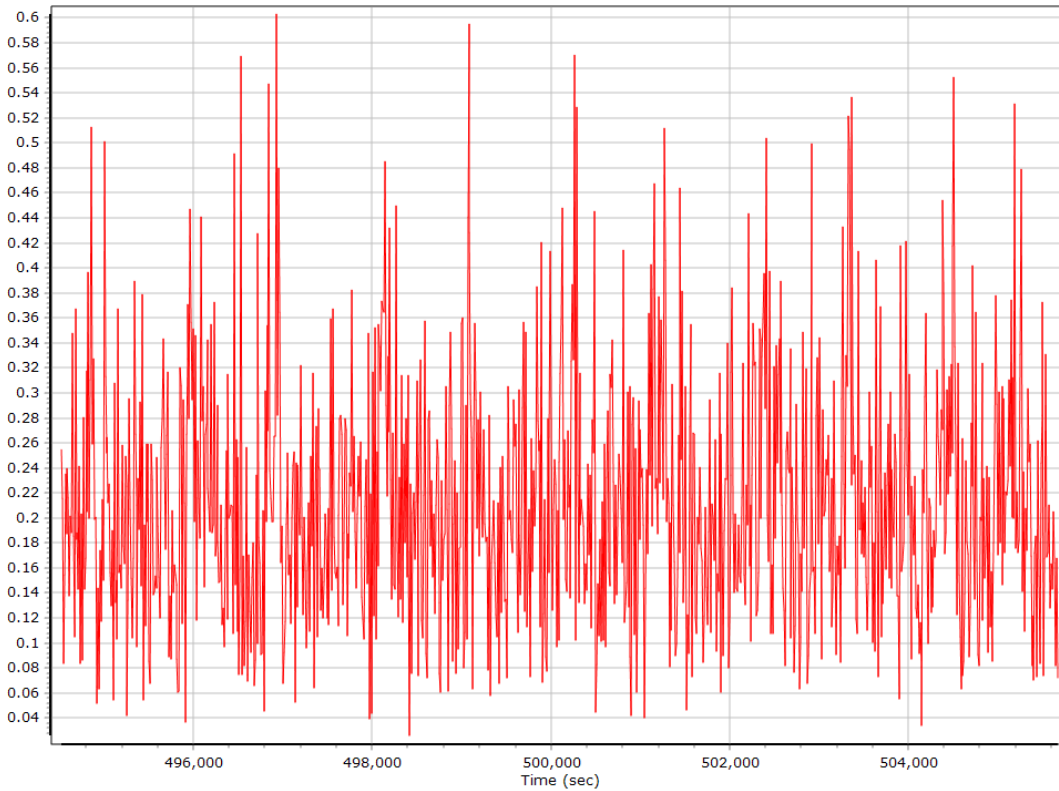
Ground Speed



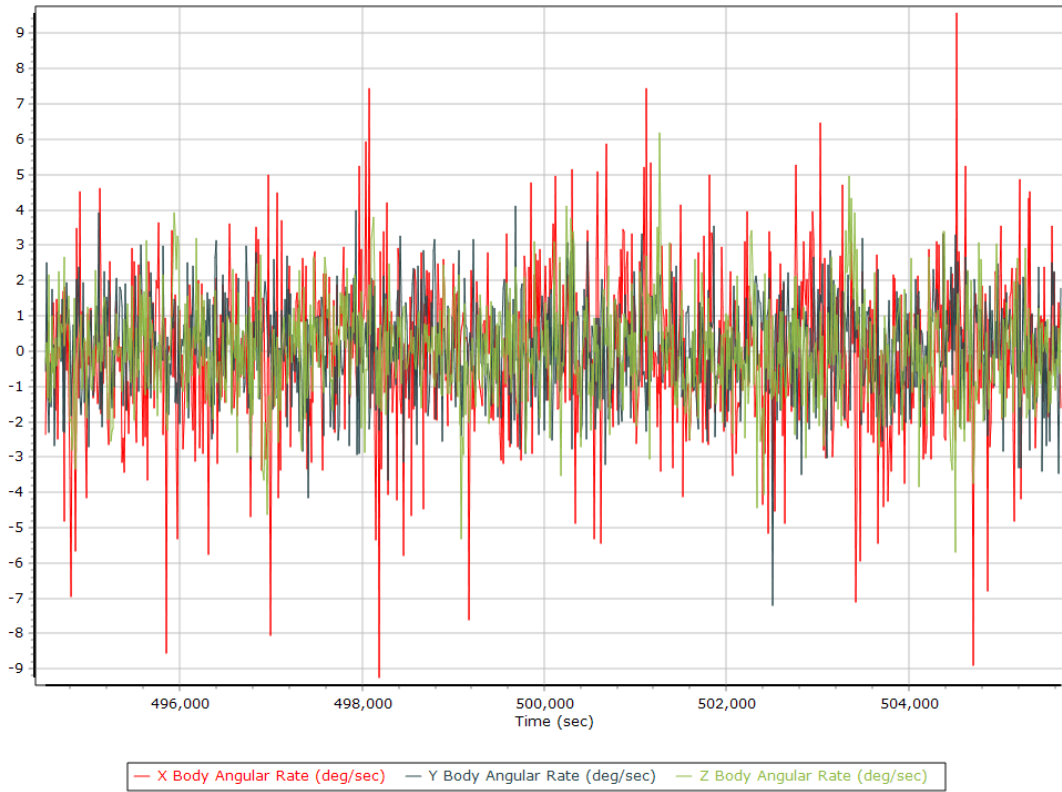
Body Acceleration



Total Body Acceleration



Body Angular Rate



SmartBase Processing Summary

Smart Select Options

Archive enabled	False
User database enabled	False
Include high-rate data sites	False
Target GNSS Selection	GNSS

Basestation Selection

Date	ID	Dist	Data Type	Rate	Service	Database	Status
------	----	------	-----------	------	---------	----------	--------

SmartBase Results

SmartBase status	
Primary station Id	
Primary station data rate [sec]	0.0
VRS/ASB generation rate [sec]	0.0
VRS/ASB timespan	
Number of reference stations	0
Primary station GPS measurement usage [%]	0.0
Average number of satellites per epoch	0.0
Max number of GPS stations used	0
Min number of GPS stations used	0
Total full data gap [sec]	0
Total individual satellite data gap [sec]	0
GPS precise vs. broadcast ephemeris used	0.0 % / 0.0 %
Termination Status	

SmartBase Quality Check

GNSS QC

GNSS QC Statistics

Statistics	Min	Max	Mean
Baseline length [km]	1.40	38.97	
Number of GPS SV	6	11	10
Number of GLONASS SV	2	6	5
Number of QZSS SV	0	0	0
Number of BEIDOU SV	0	0	0
Total number of SV	11	17	15
PDOP	1.22	2.94	1.50
QC Solution Gaps	0.00	0.00	
Solution Type	Fixed	Float	No solution
Epoch (s)	11206.00	0.00	0.00
Percentage	100.00	0.00	0.00

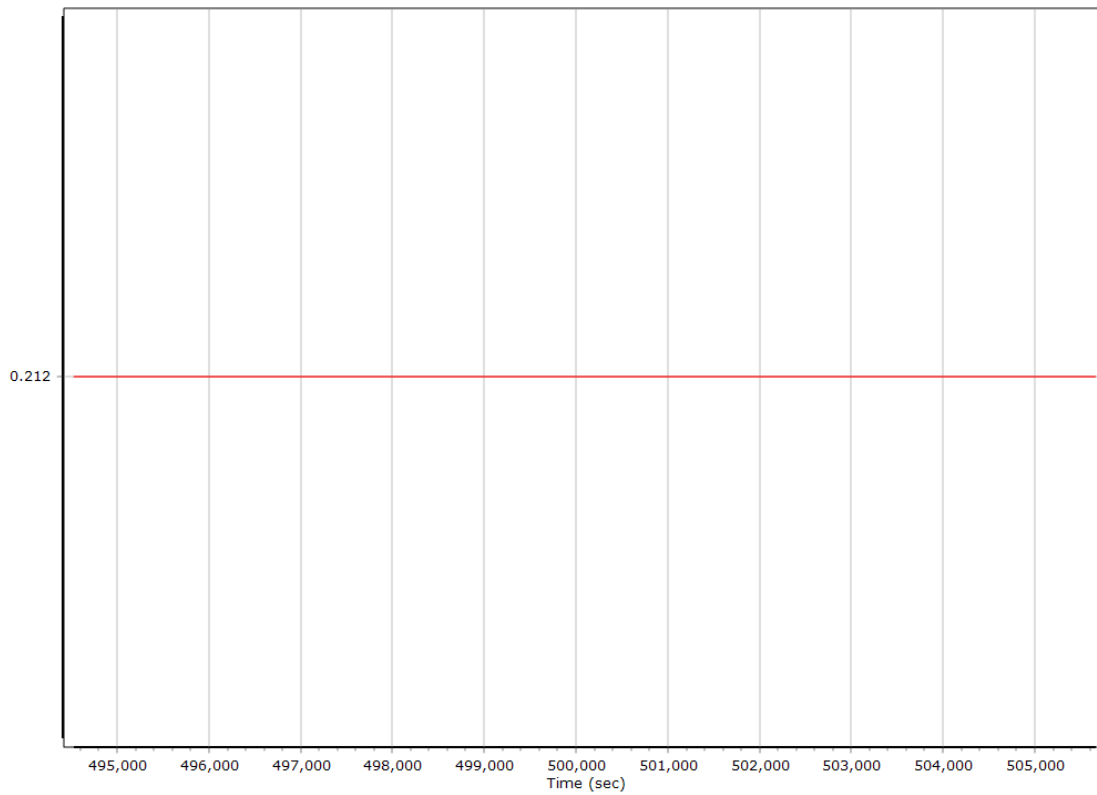
GNSS-Inertial Processor Configuration

Processing mode	IN-Fusion SmartBase		
Stabilized mount	False		
Base station	ASB		
Processing start time	494448.000 (4/12/2019 5:20:30 PM)		
Processing end time	505673.000 (4/12/2019 8:27:35 PM)		
Initial attitude source	Real-Time VNAV/RNAV Attitude		
IMU Sensor Context	Processing with Onboard IMU		
Reference to IMU lever arm [m]	0.000	0.000	0.000
Reference to IMU mounting angles [deg]	0.000	0.000	0.000
Reference to Primary GNSS lever arm [m]	0.212	0.092	-0.769
Reference to Primary GNSS lever arm std dev [m]	0.030	0.030	0.030
Aircraft to Reference mounting angles [deg]	0.000	0.000	0.000

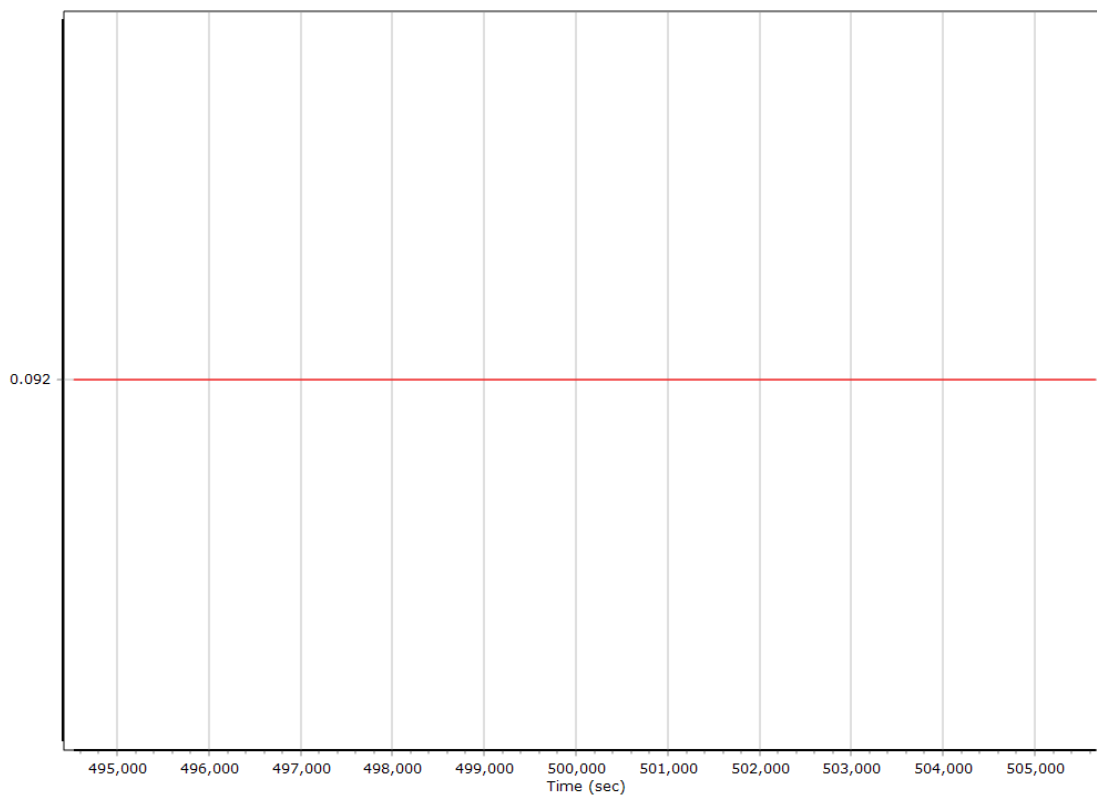
Calibrated Installation Parameters

Reference-Primary GNSS Lever Arm

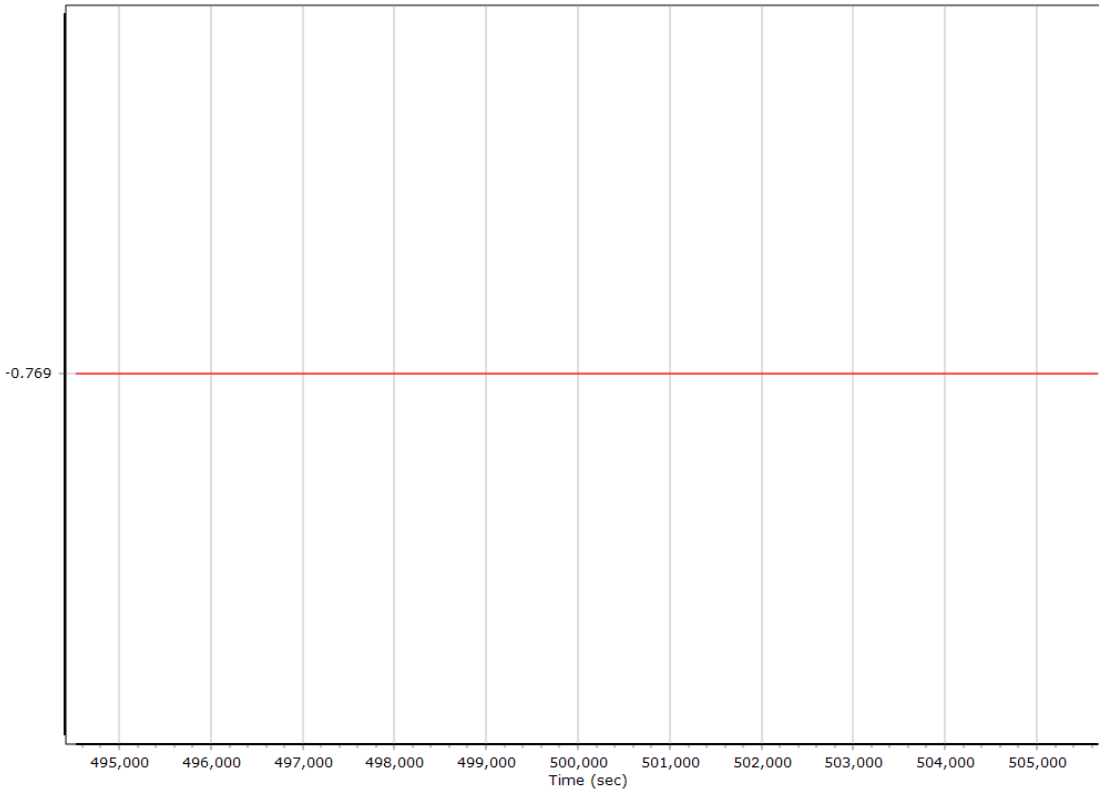
X Reference-Primary GNSS Lever Arm (m)



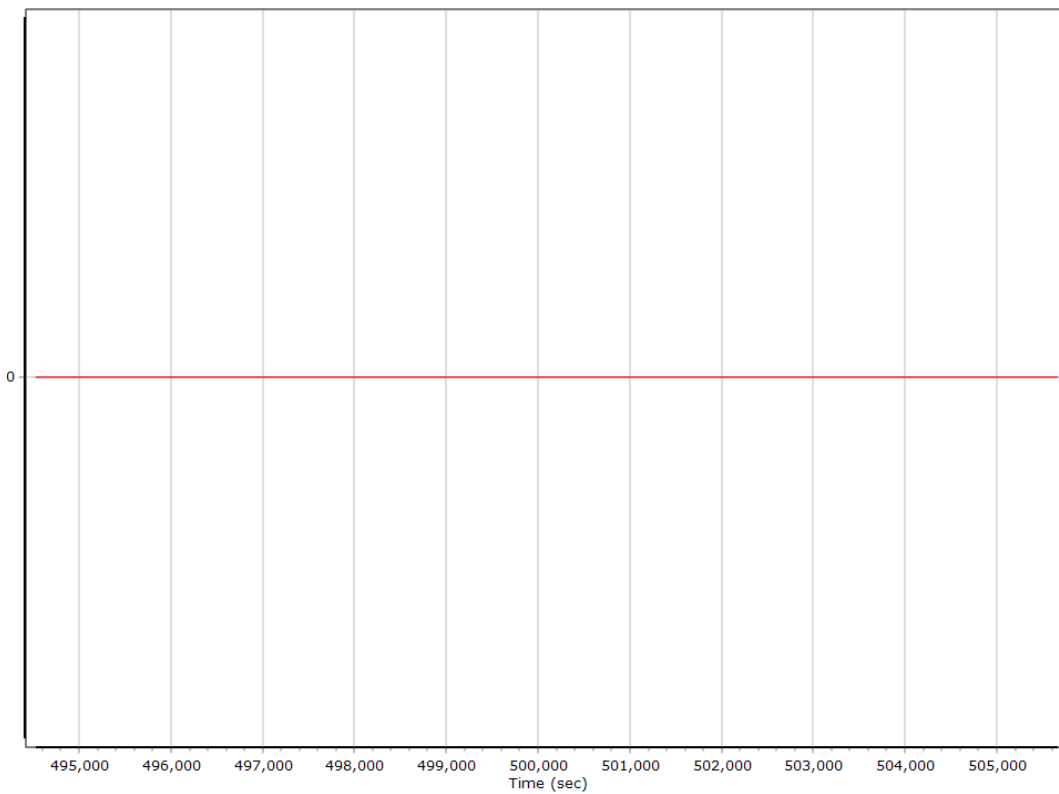
Y Reference-Primary GNSS Lever Arm (m)



Z Reference-Primary GNSS Lever Arm (m)



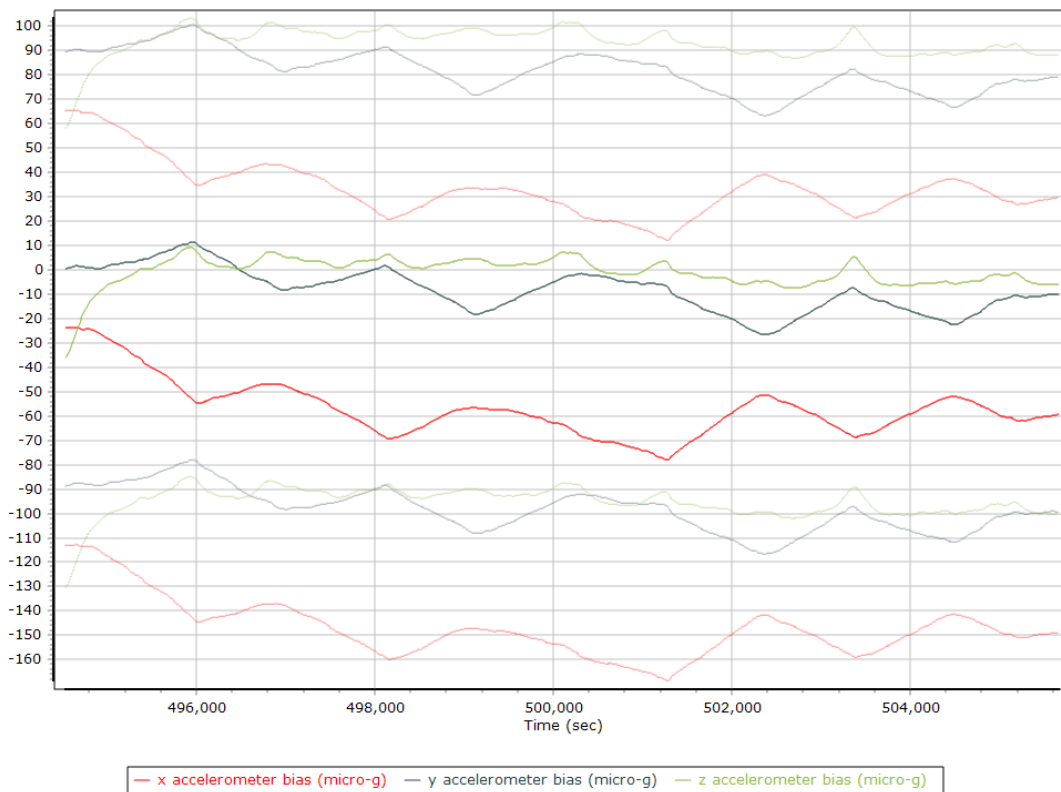
Reference-Primary GNSS Lever Arm Figure of Merit



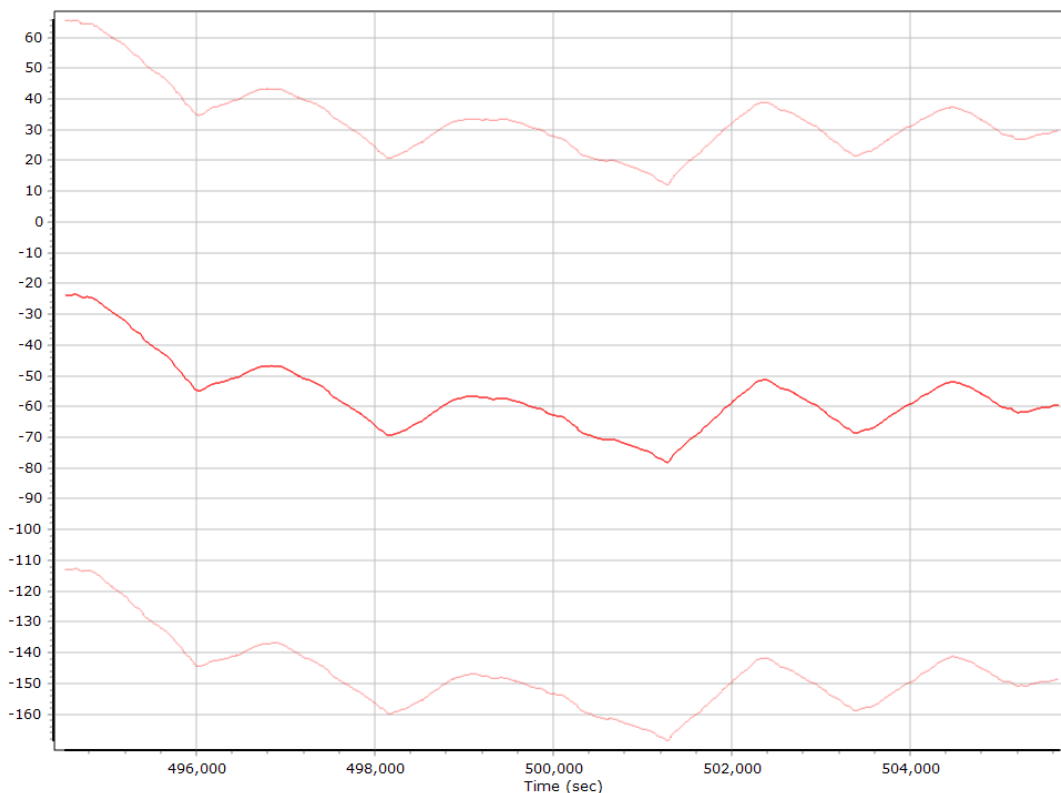
Smoothed IN-Fusion QC

Smoothed Estimated Errors, Reference Frame

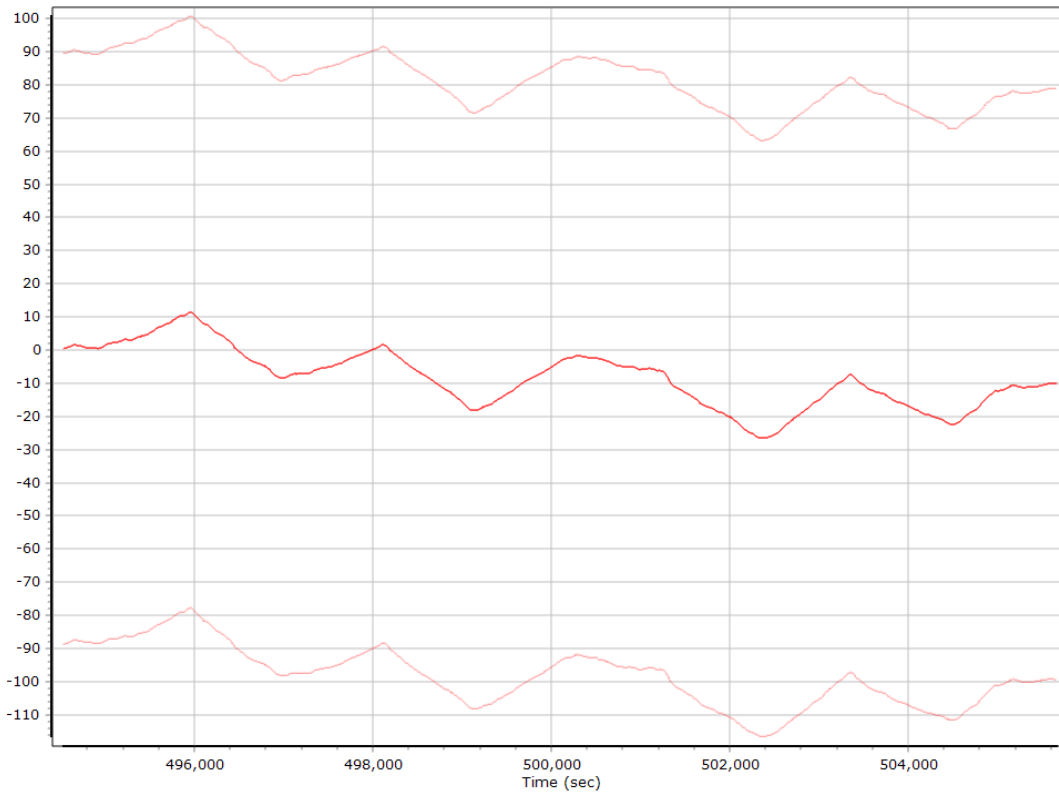
Accelerometer Bias (micro-g)



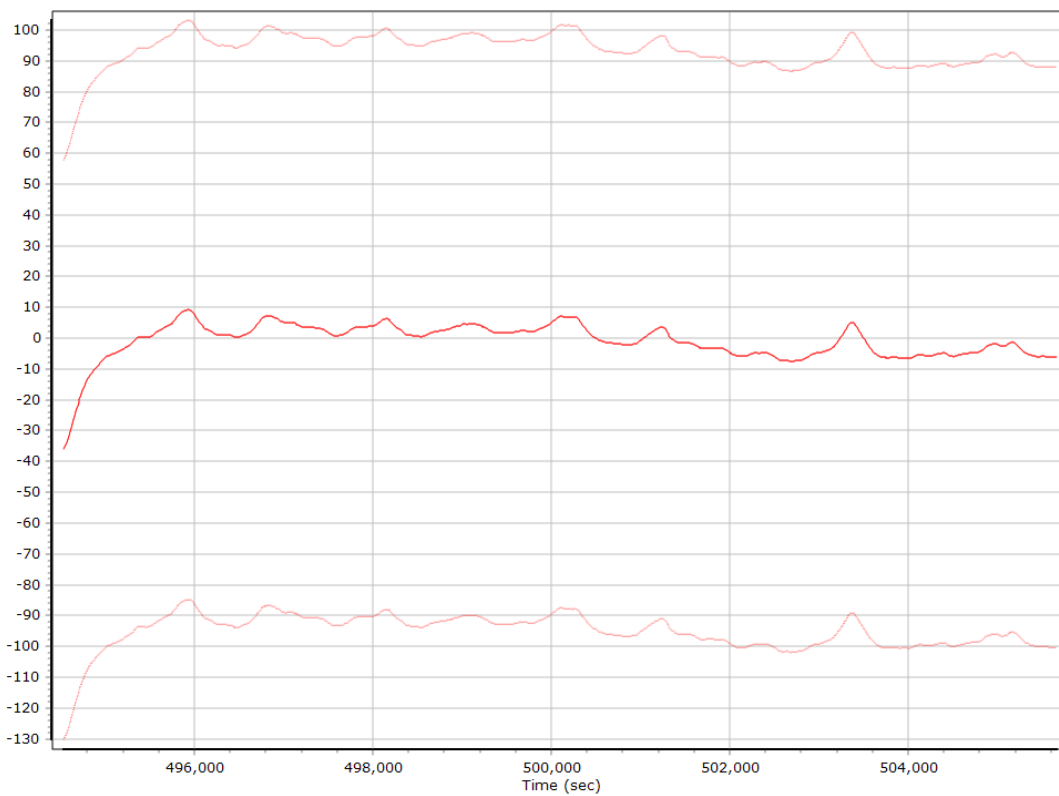
X Accelerometer Bias (micro-g)



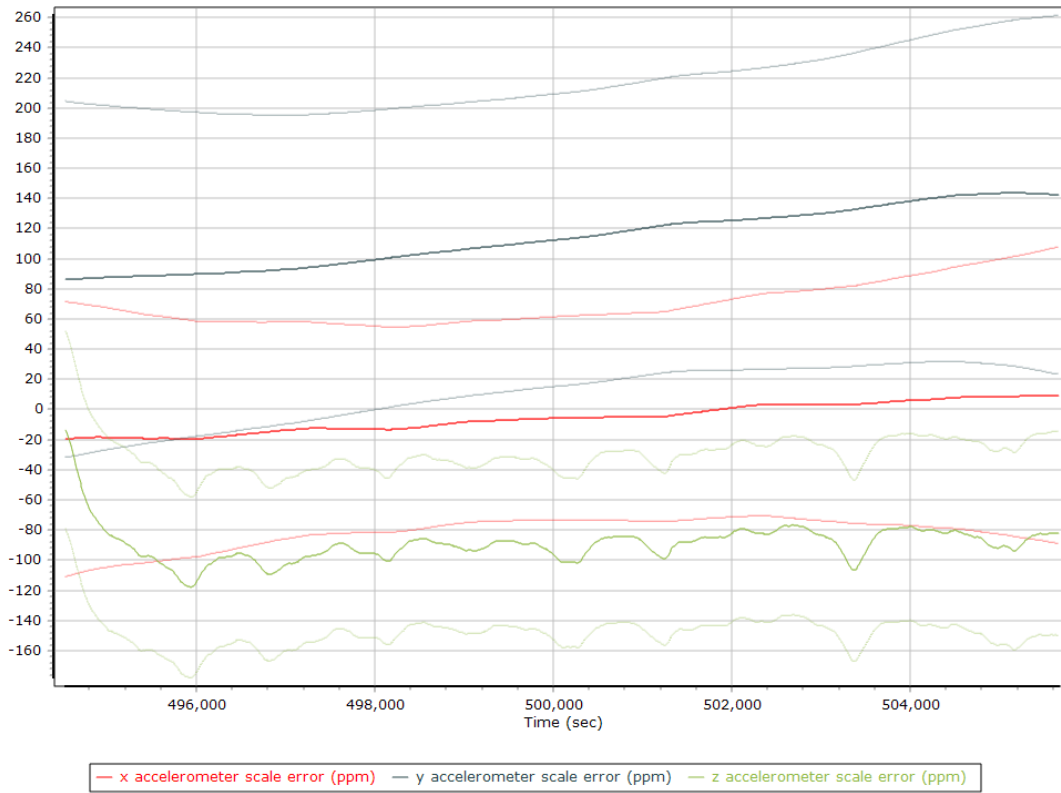
Y Accelerometer Bias (micro-g)



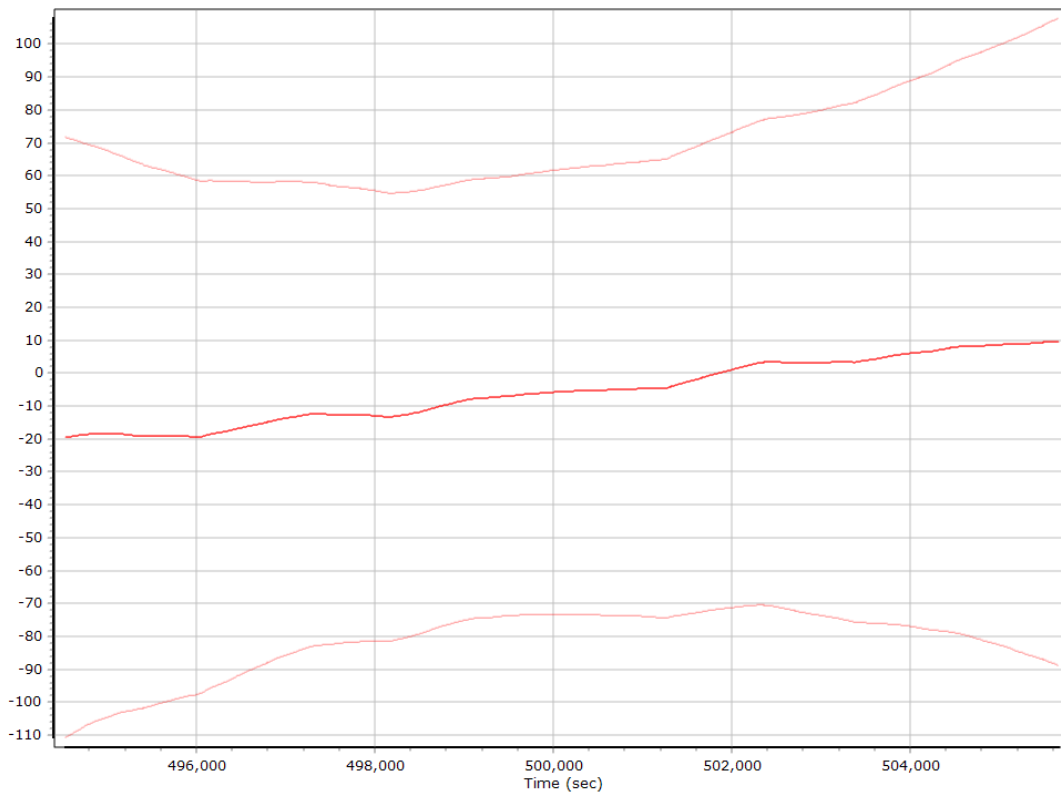
Z Accelerometer Bias (micro-g)



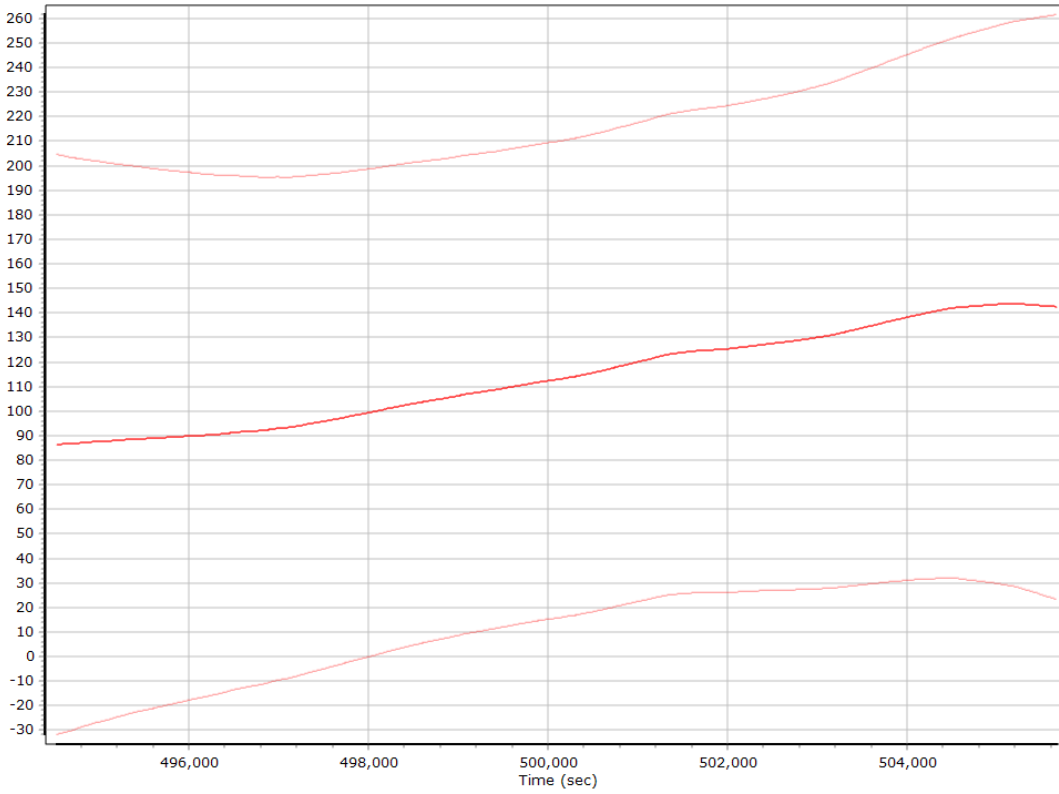
Accelerometer Scale Error (ppm)



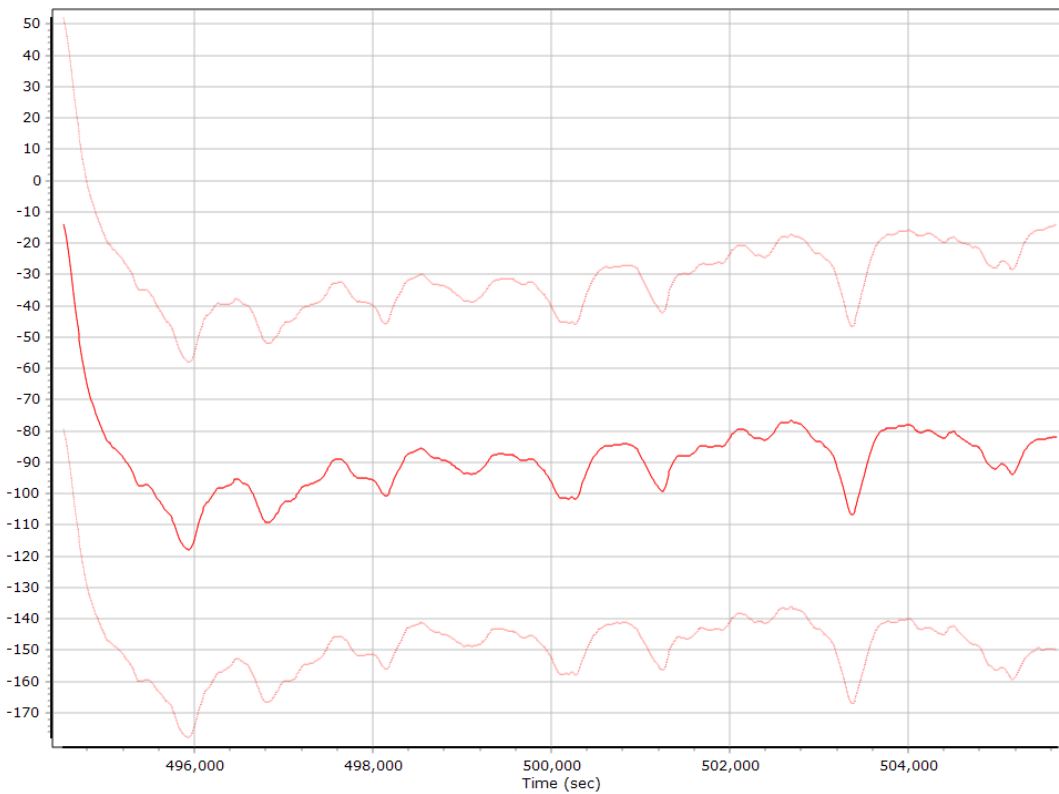
X Accelerometer Scale Error (ppm)



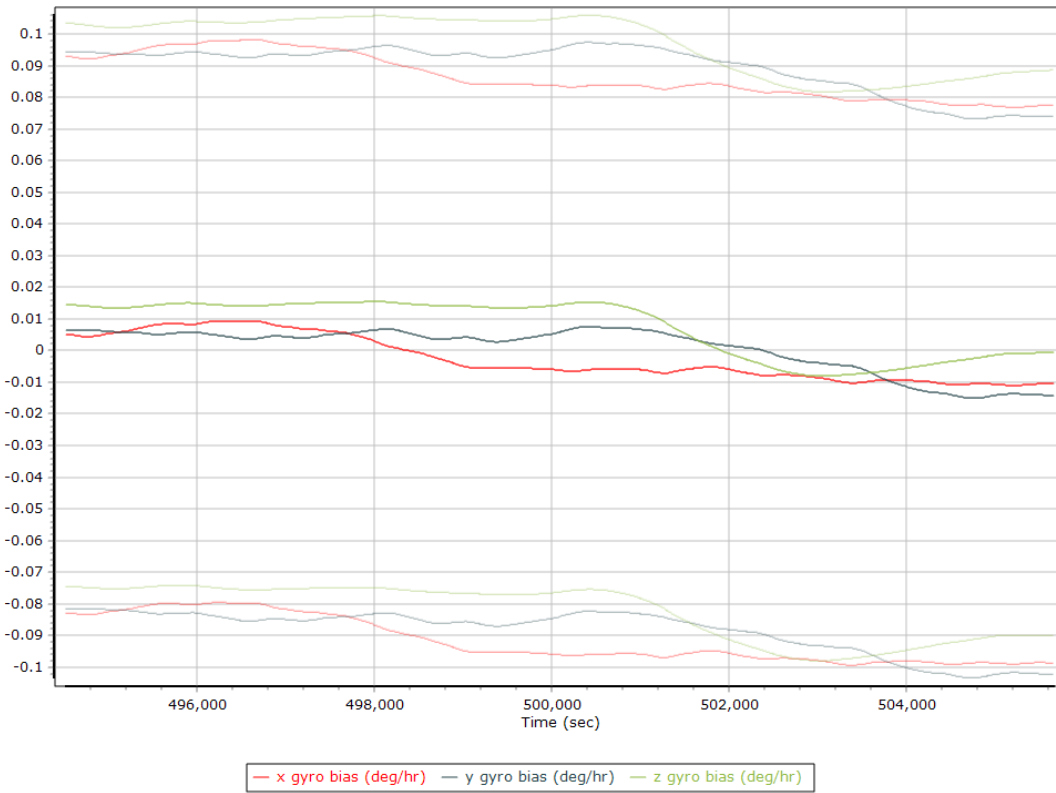
Y Accelerometer Scale Error (ppm)



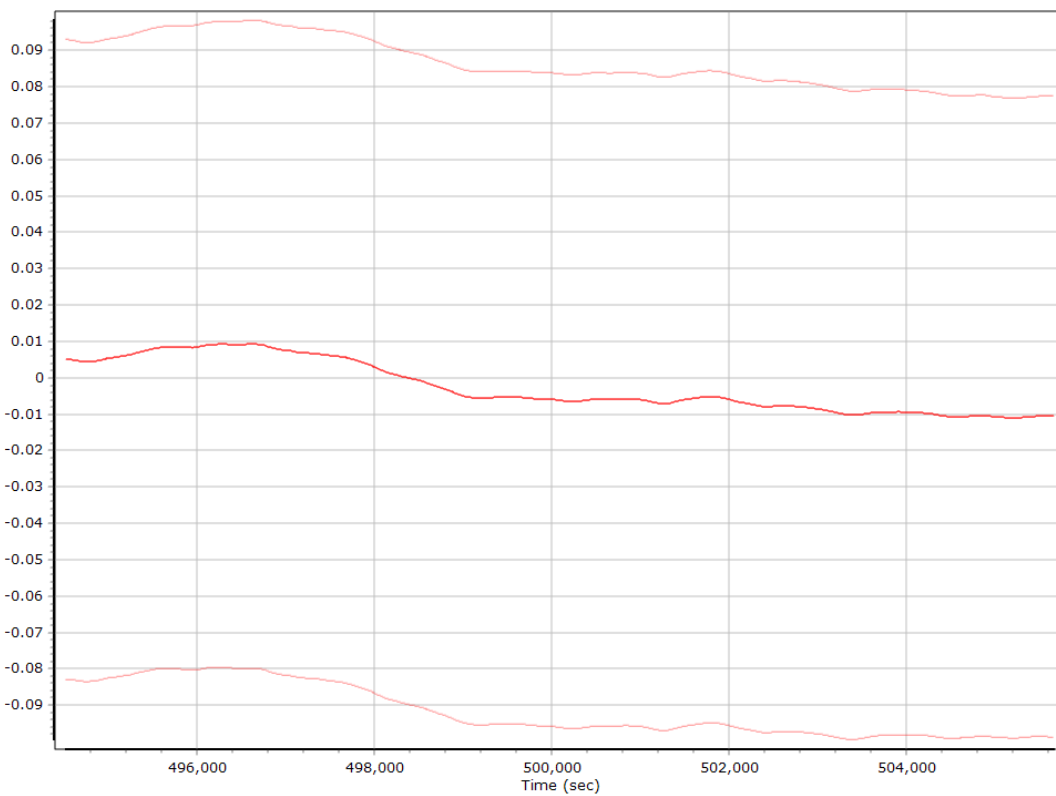
Z Accelerometer Scale Error (ppm)



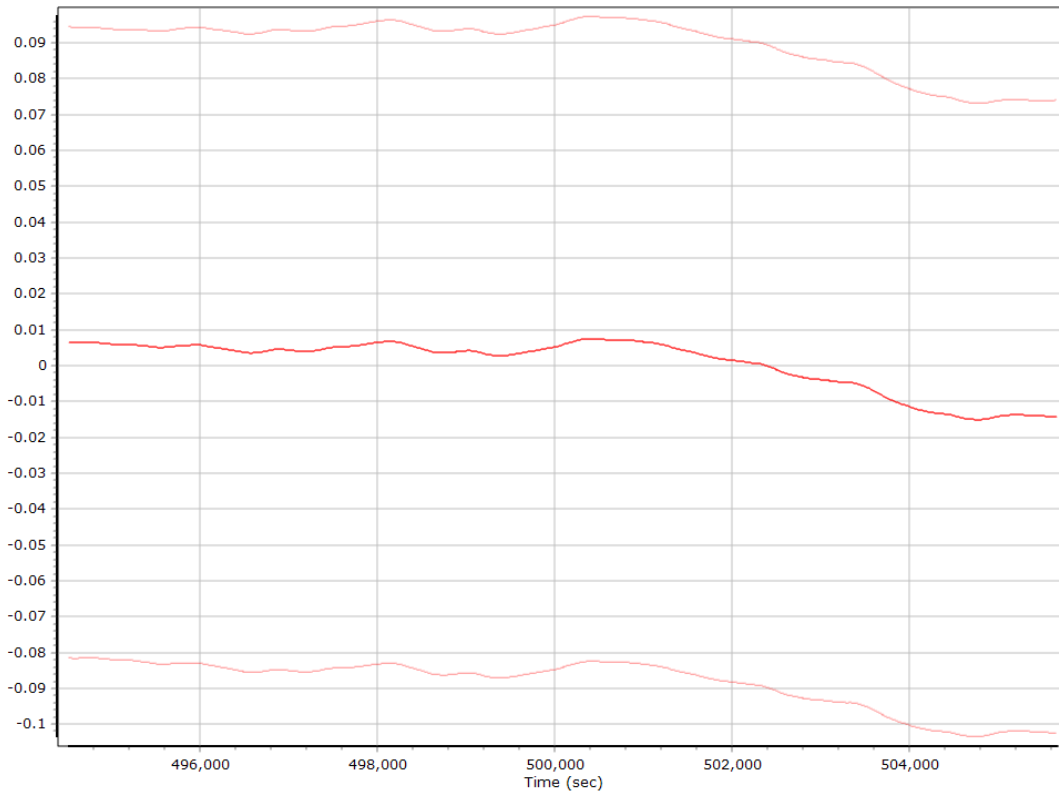
Gyro Bias (deg/h)



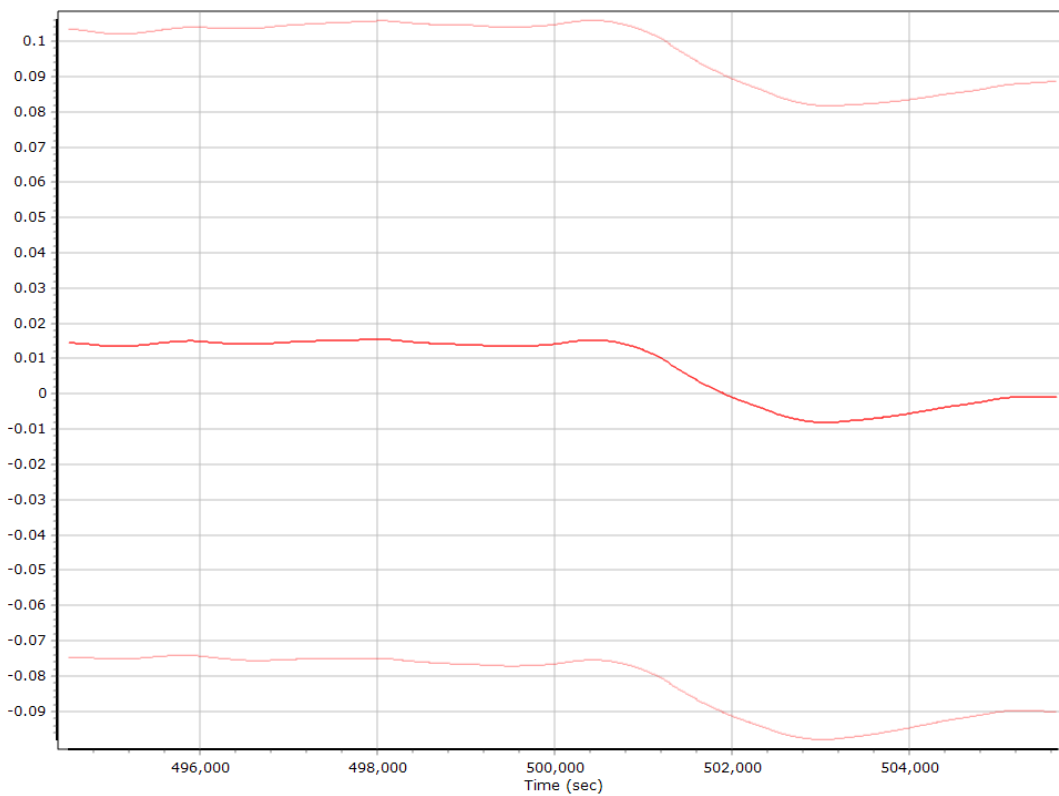
X Gyro Bias (deg/h)



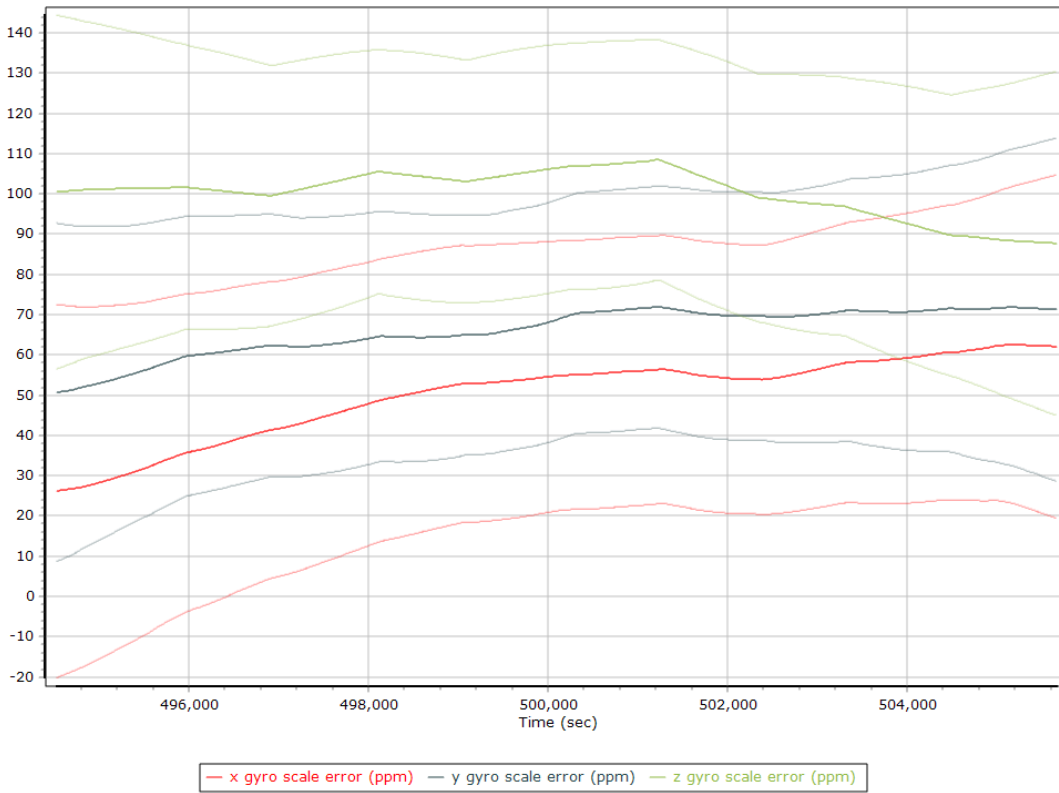
Y Gyro Bias (deg/h)



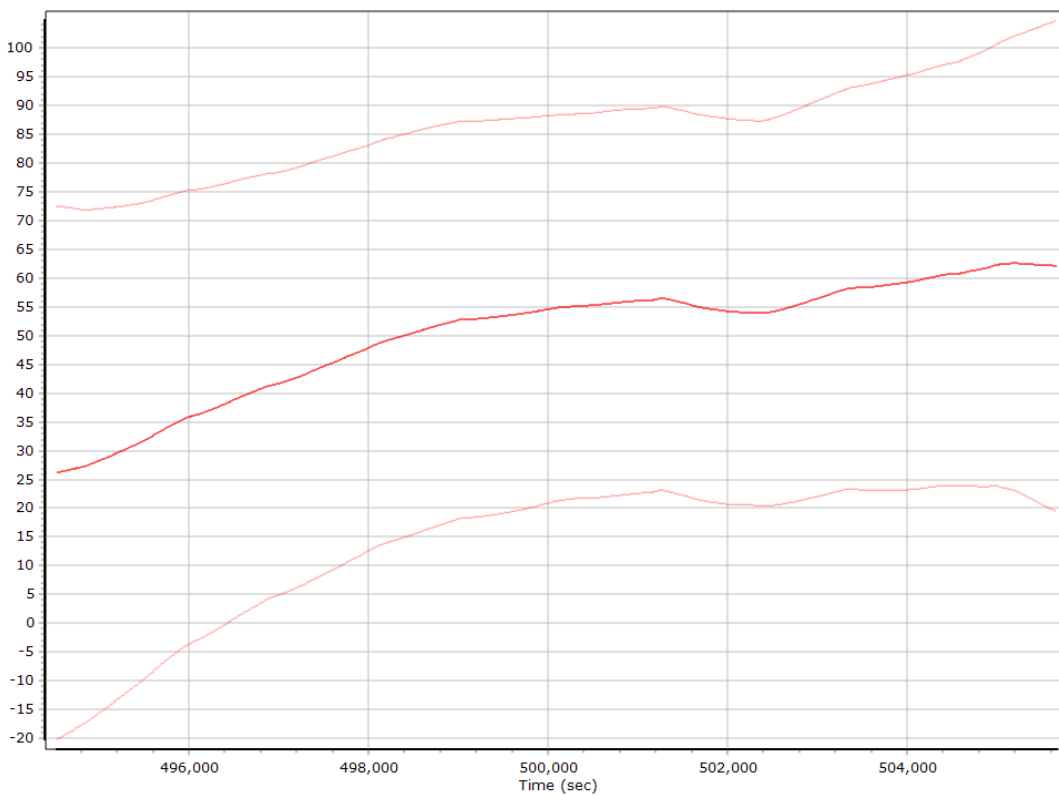
Z Gyro Bias (deg/h)



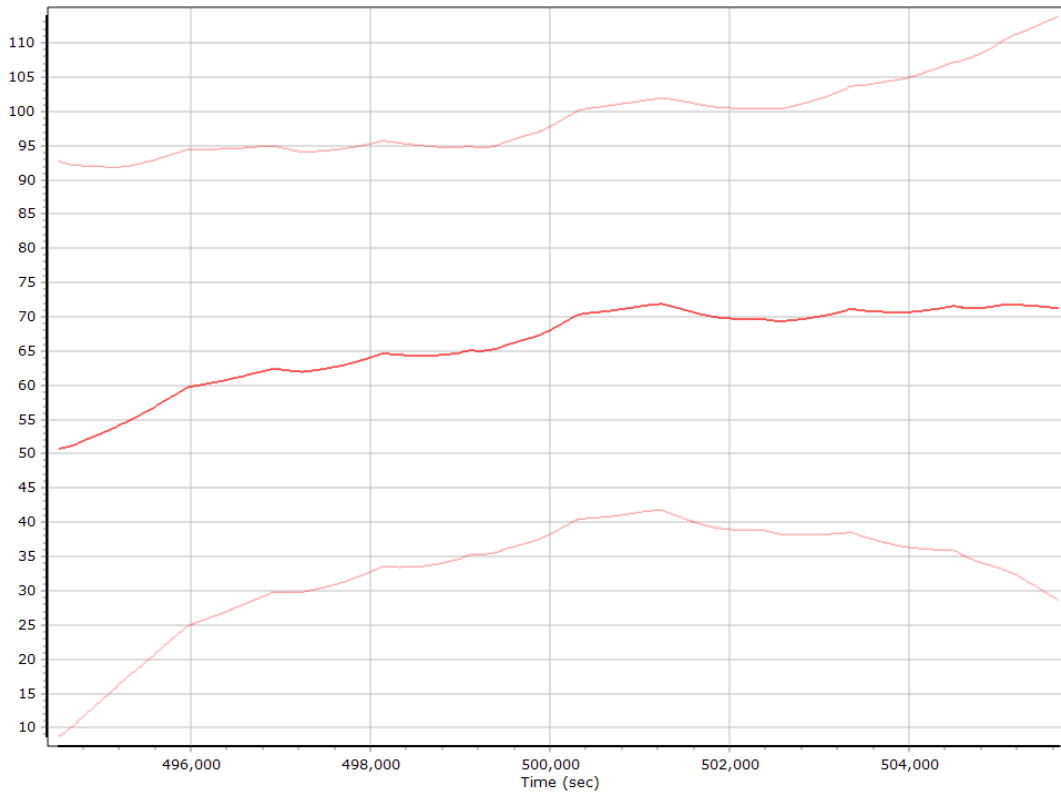
Gyro Scale Error (ppm)



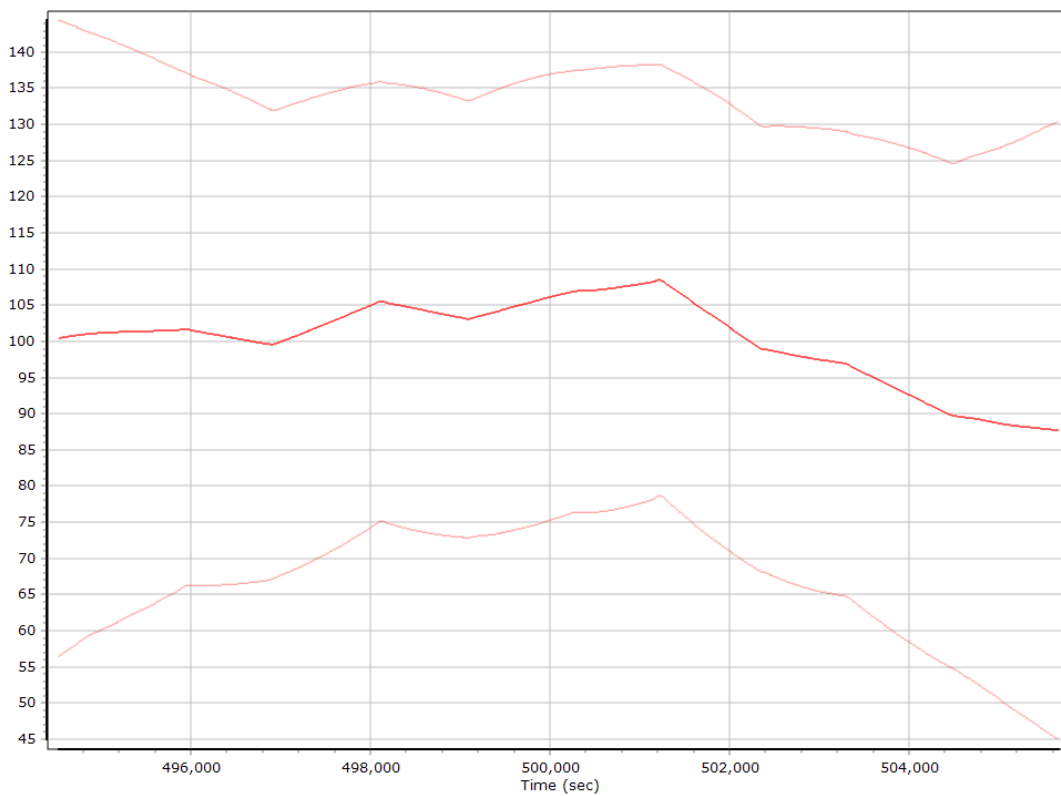
X Gyro Scale Error (ppm)



Y Gyro Scale Error (ppm)

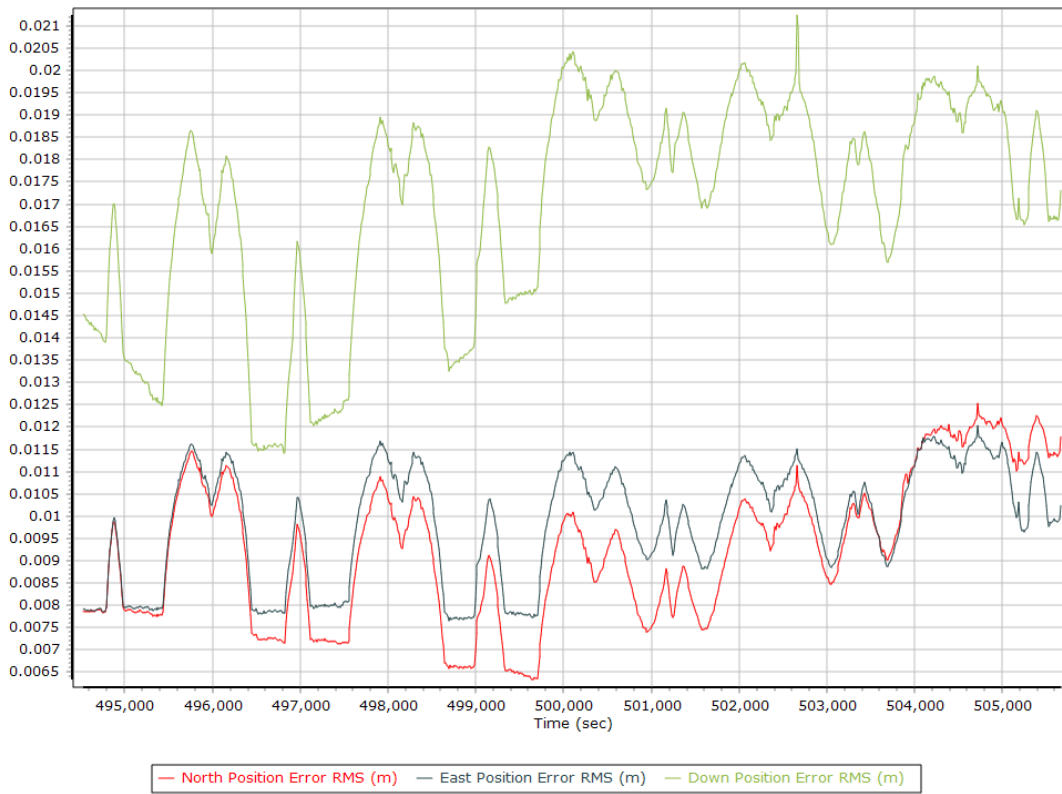


Z Gyro Scale Error (ppm)

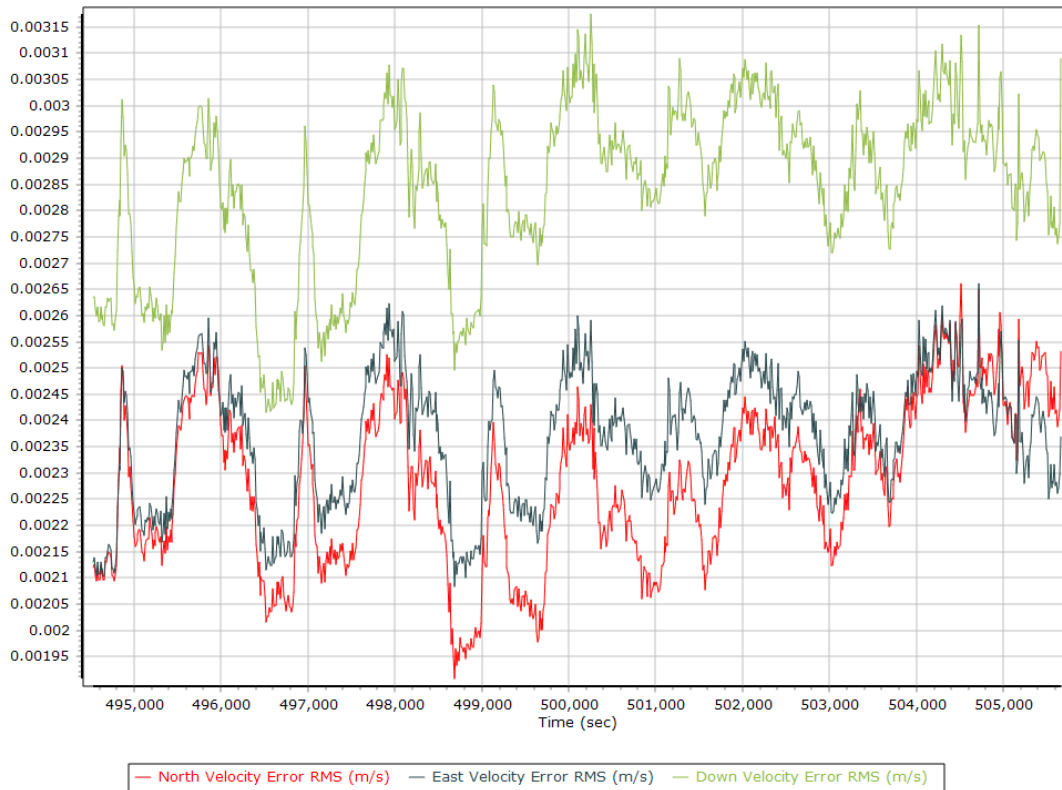


Smoothed Performance Metrics

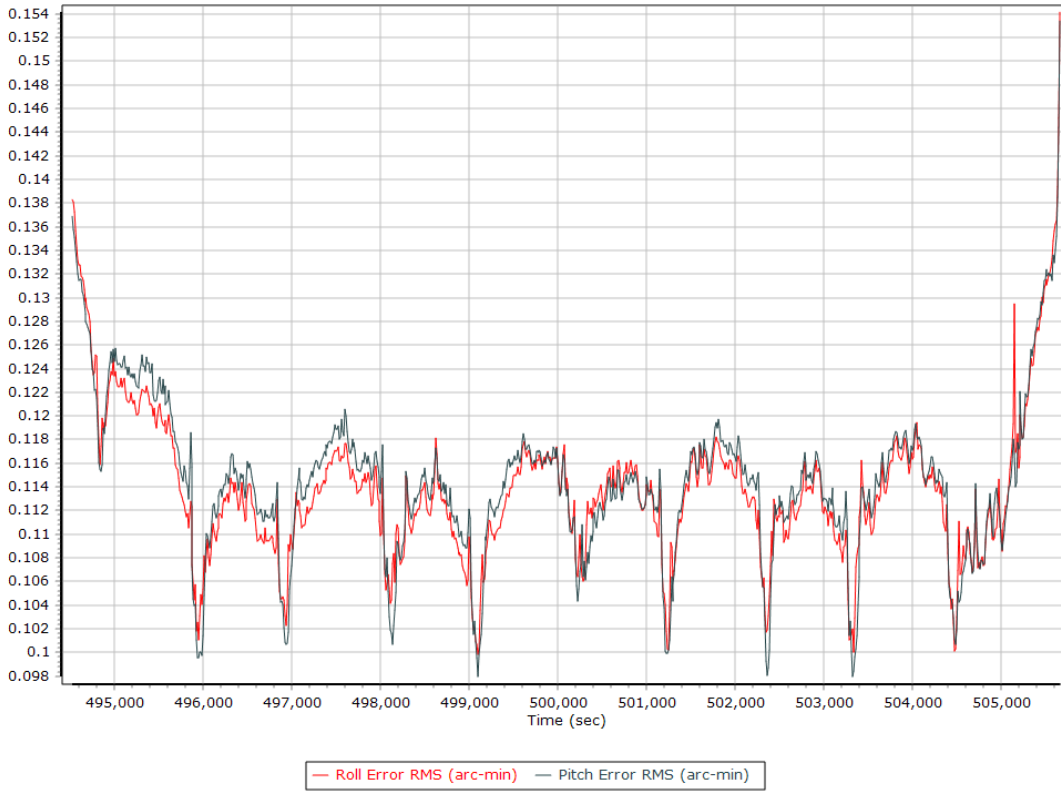
Position Error RMS (m)



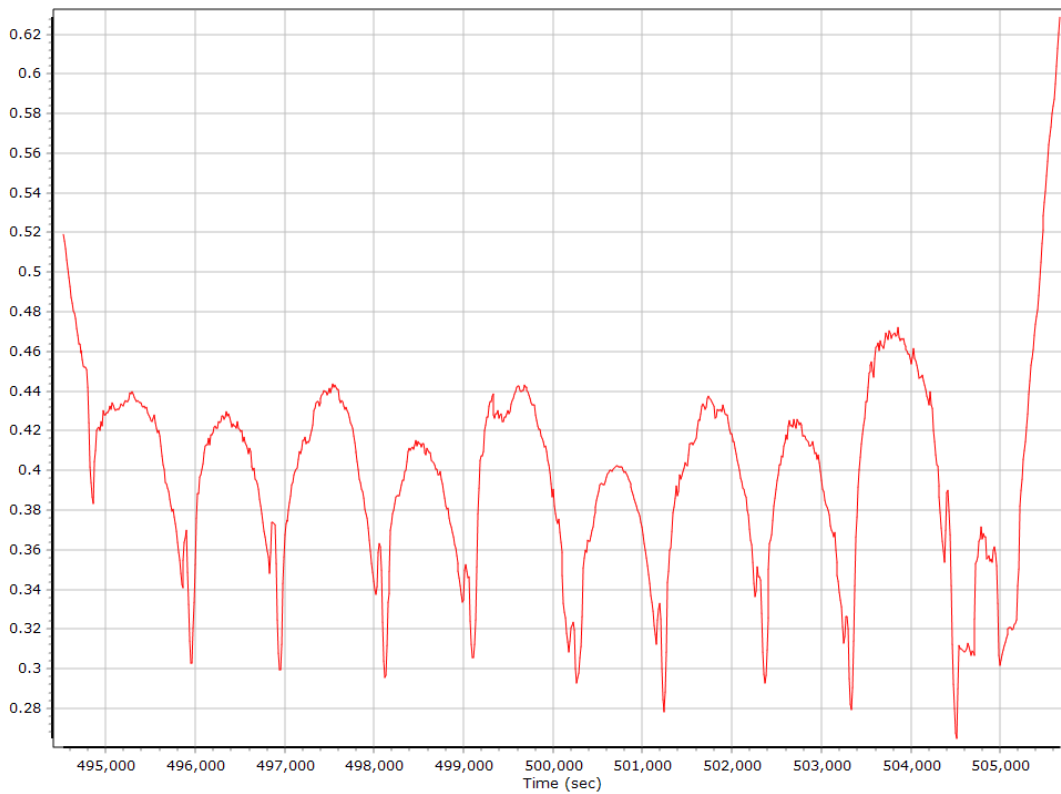
Velocity Error RMS (m/s)



Roll/Pitch Error RMS (arc-min)

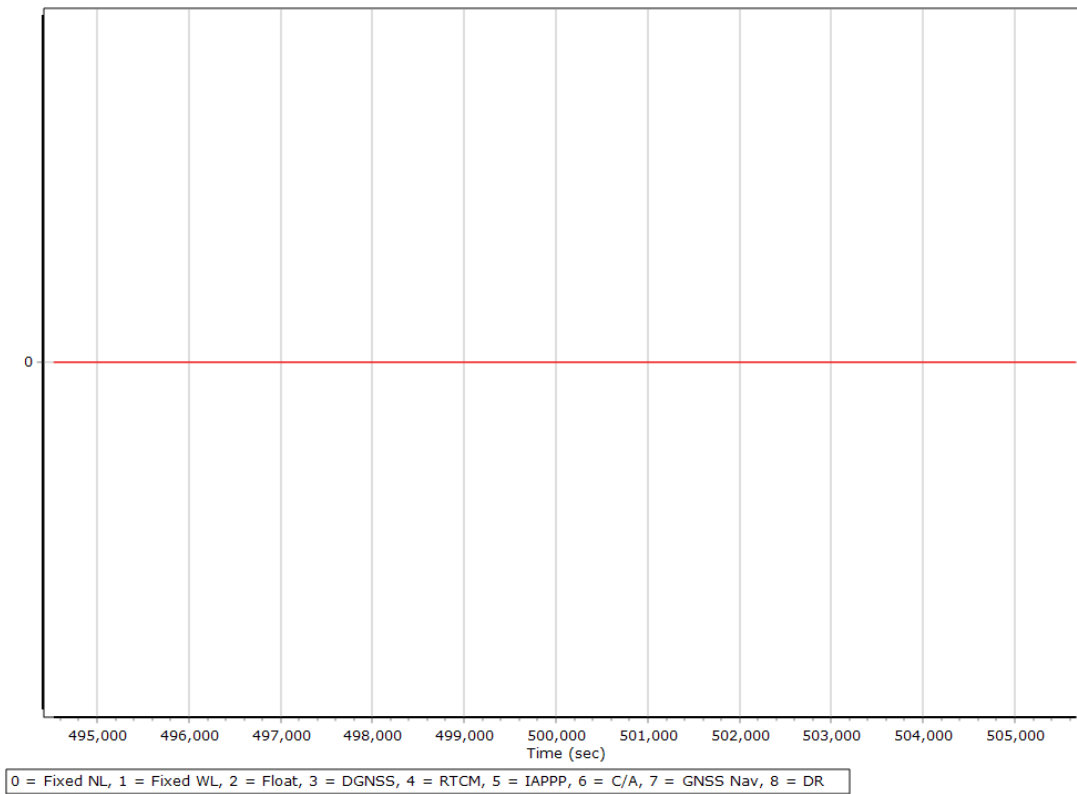


Heading Error RMS (arc-min)

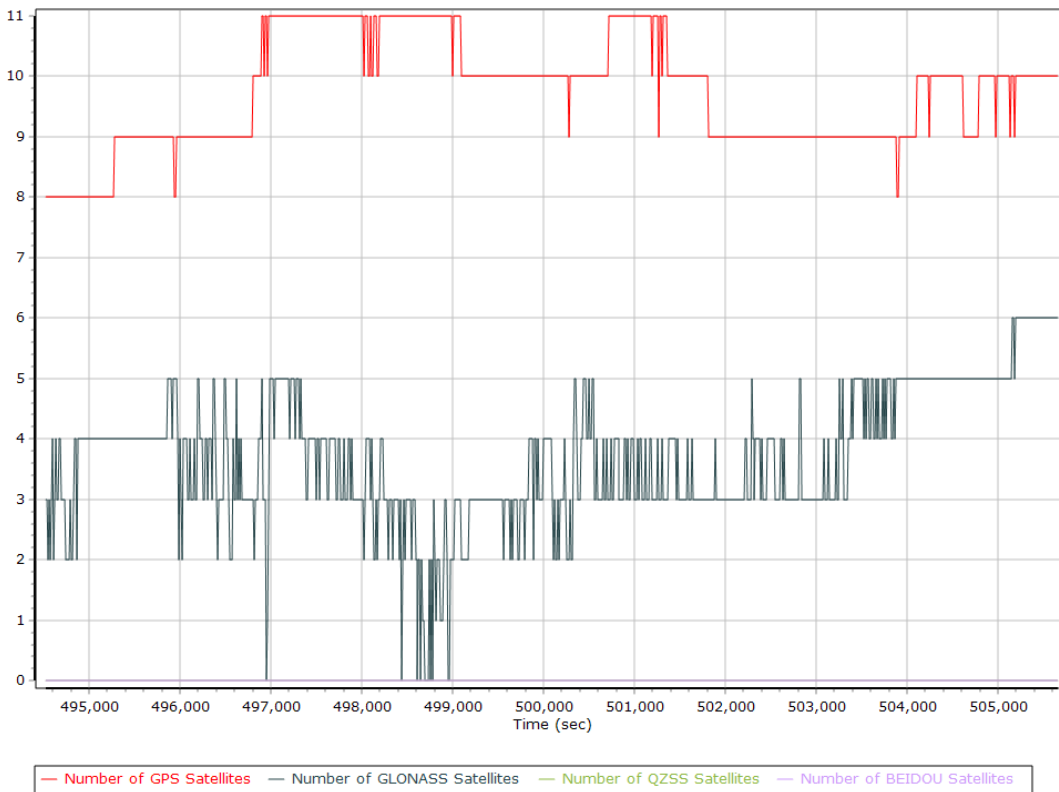


Smoothed Solution Status

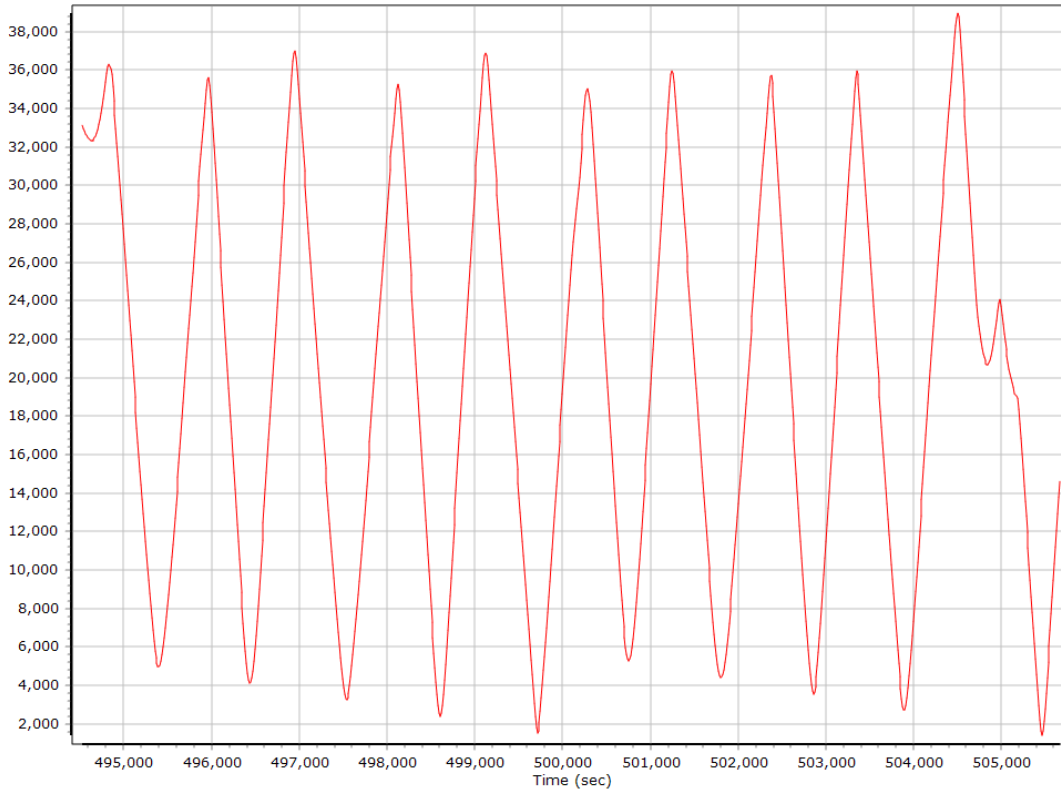
Processing Mode



Number of Satellites



Baseline Length



SBET IAkar Separation

