

FL_Southwest_2018_D18

Survey Report

Contract Number: G17PC00044

Task Order Number: 140G0218F0179



Government Point-of-Contact (POC)

Organization: United States Geological Survey

Telephone: True

Address: Gail Dunn, MS 663

1400 Independence Road

Rolla, MO, 65401



Contractor Point-of-Contact (POC)

Address: Digital Aerial Solutions, LLC

Telephone: (813) 628-0788

Joshua Helton (VP)

4027 Crescent Park Drive

Riverview, FL 33578

Overview

Digital Aerial Solutions, LLC (DAS) with contract number G17PC00044 was contracted by the United States Geological Survey under task order number 140G0218F0179 collect a high resolution LiDAR data set covering 2,347 square miles affecting Lee and Collier County in FL. Each of these categories was spread out as evenly as possible throughout the Area of Interest (AOI). The survey was completed using the Global Positioning System (GPS). Each observation was identified in the field and surveyed utilizing GPS receivers, collecting GNSS and GLONASS information and utilizing a Leica Smart-Net RTK network. In accordance with section C.1.e.(i)(c) of the task order, the spatial reference system used was:

Spatial Reference System:

Coordinate System: Albers Equal Area

Horizontal Datum: North American Datum 1983 (2011)

Vertical Datum: North American Vertical Datum of 1988

Units: Meters

Geoid Model: Geoid12B

Section C.1.b.(viii) of the task order outlines the ground control minimum requirements and specifications for this LiDAR project. Thirty-two (32) Supplemental ground control points were collected and used to support the airborne GPS solution and positional accuracy. DAS also collected the required number of Non-Vegetated Vertical Accuracy (NVA) and Vegetated Vertical Accuracy (VVA) Quality Checkpoints as stated in the task order. These checkpoints serve as an independent delivery to the client and were not incorporated into the vertical solution.

Glossary of Terms

Term - Definition

ATTN	- Attention
BG	- Bare-Ground Checkpoint (see NVA)
CTRL	- Control
DAS	- Digital Aerial Solutions, LLC
Ellip	- Ellipsoid Height
FIPS	- Federal Information Processing Standard
GPS	- Global Positioning Systems
HP	- Hard Pavement(see NVA)
HV	- High Vegetation(see VVA)
ID	- Identification
LV	- Low Vegetation (see VVA)
LiDAR	- Light Detection and Ranging
MV	- Medium Vegetation (see VVA)
NAD83	- North American Datum of 1983
NAVD88	- North American Vertical Datum of 1988
NGS	- National Geodetic Survey
NGTOC	- National Geospatial Technical Operations Center
NVA	- Non-Vegetated Vertical Accuracy
Ortho	- Orthometric Height
PS	- Packed Sand(see NVA)
POC	- Point of Contact
RTK	- Real Time Kinematics
USGS	- United States Geological Survey
VP	- Vice President
VVA	- Vegetated Vertical Accuracy

Supplemental Ground Control

The Map shows the overall distribution of the Supplemental Ground Control throughout the AOI. The following tables contain a list of the control using Easting, Northing, and Orthometric height. The coordinate system displayed is Albers Equal Area, North American Datum 1983 (2011), North American Vertical Datum of 1988, Geoid12B and using Meters for measurement.

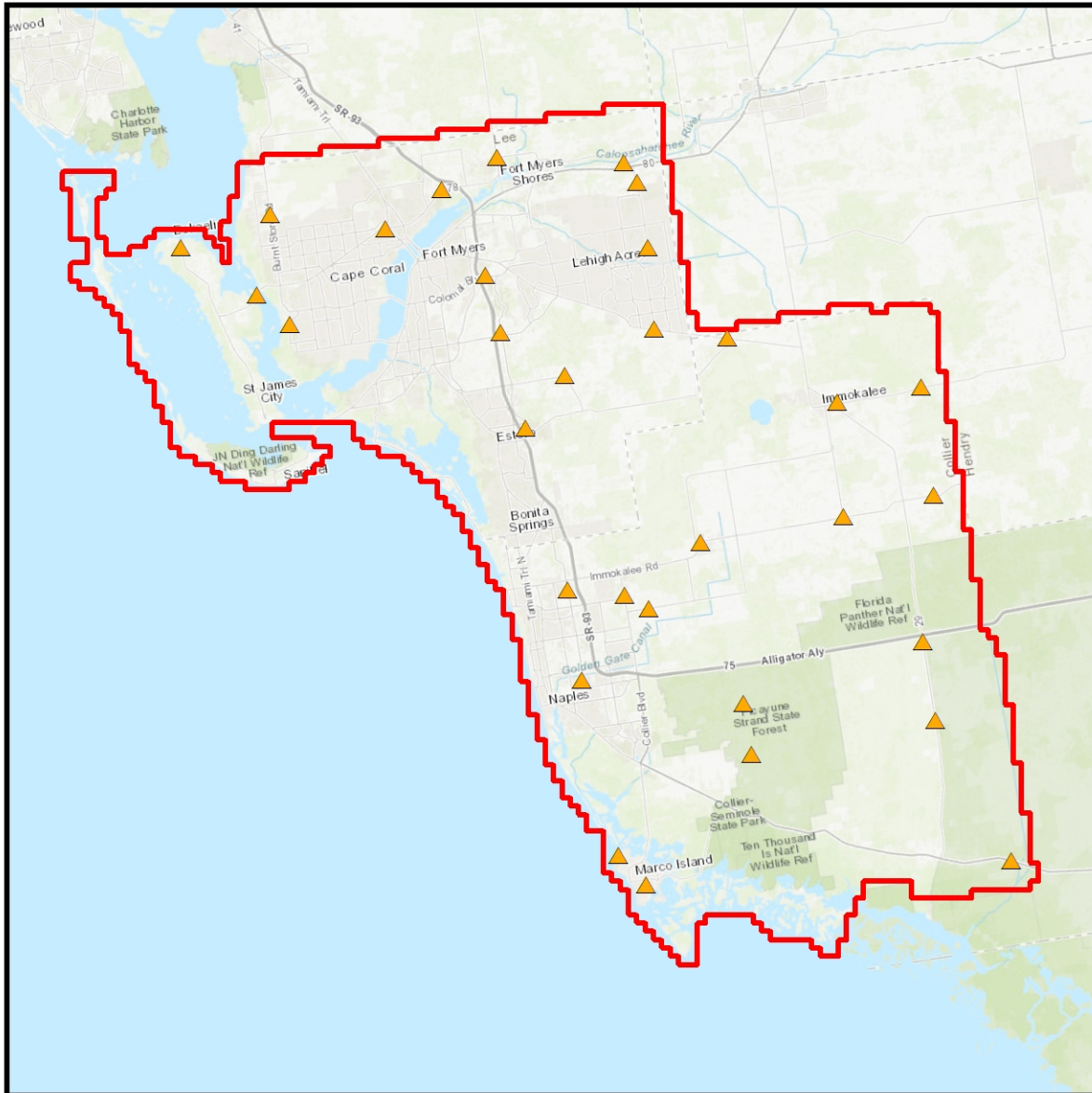


TABLE: Ground Control Points

Point ID	Easting	Northing	Ortho
18.GCP.BG	1393901.732	508926.581	2.163
21.GCP.BG	1419697.757	501676.114	6.487
26.GCP.BG	1429616.091	463843.293	3.944
9.GCP.BG	1436389.504	515198.91	3.599
1.GCP.HQ	1461949.124	486400.088	9.868
11.GCP.HP	1421160.03	515775.396	4.527
12.GCP.HP	1414477.425	511945.738	3.549
13.GCP.HP	1407732.592	507207.206	2.678
15.GCP.HP	1392278.94	499277.734	0.55
16.GCP.HP	1383131.521	504929.676	1.462
19.GCP.HP	1396203.759	495752.786	1.373
200.GCP.HP	1435679.153	432080.628	1.777
201.GCP.HP	1439043.017	428545.648	2.924
22.GCP.HP	1421542.834	494731.981	7.138
24.GCP.HP	1424540.036	483259.417	5.433
27.GCP.HP	1431312.36	453097.729	2.706
30.GCP.HP	1429249.444	489581.244	8.368
33.GCP.HP	1462692.951	472640.757	6.231
34.GCP.HP	1473557.68	475234.316	6.088
36.GCP.HP	1472235.821	457683.876	4.79
37.GCP.HP	1473763.653	448206.227	3.808
39.GCP.HP	1482843.086	431358.634	1.477
53.GCP.HP	1436420.222	463276.151	4.793
55.GCP.HP	1439397.896	461609.58	3.882
6.GCP.HP	1439262.415	504991.841	7.56
64.GCP.HP	1451728.135	444155.475	1.979
73.GCP.HP	1445536.039	469605.269	4.875
8.GCP.HP	1437914.195	512775.145	5.598
2.GCP.PS	1472081.289	488220.258	8.343
4.GCP.PS	1448767.2	494094.675	8.491
5.GCP.PS	1439986.327	495159.569	9.572
62.GCP.PS	1450718.702	450241.343	2.462

18.GCP.BG



Point ID: 18.GCP.BG

Northing: 508926.581 Meters

Easting: 1393901.732 Meters

Orthometric Height: 2.163 Meters

Latitude: 26° 42' 55.24455" N

Longitude: 82° 02' 20.45419" W

Ellipsoid Height: -21.699 Meters

21.GCP.BG



Point ID: 21.GCP.BG

Northing: 501676.114 Meters

Easting: 1419697.757 Meters

Orthometric Height: 6.487 Meters

Latitude: 26° 36' 55.93995" N

Longitude: 81° 47' 42.79931" W

Ellipsoid Height: -17.811 Meters

26.GCP.BG



Point ID: 26.GCP.BG

Northing: 463843.293 Meters

Easting: 1429616.091 Meters

Orthometric Height: 3.944 Meters

Latitude: 26° 15' 42.46046" N

Longitude: 81° 45' 13.62621" W

Ellipsoid Height: -19.857 Meters

9.GCP.BG



Point ID: 9.GCP.BG

Northing: 515198.91 Meters

Easting: 1436389.504 Meters

Orthometric Height: 3.599 Meters

Latitude: 26° 42' 51.60017" N

Longitude: 81° 36' 37.45719" W

Ellipsoid Height: -20.878 Meters

1.GCP.HQ



Point ID: 1.GCP.HQ

Northing: 486400.088 Meters

Easting: 1461949.124 Meters

Orthometric Height: 9.868 Meters

Latitude: 26° 25' 12.73491" N

Longitude: 81° 24' 08.29846" W

Ellipsoid Height: -14.538 Meters

11.GCP.HP



Point ID: 11.GCP.HP

Northing: 515775.396 Meters

Easting: 1421160.03 Meters

Orthometric Height: 4.527 Meters

Latitude: 26° 44' 25.02144" N

Longitude: 81° 45' 35.38014" W

Ellipsoid Height: -19.838 Meters

12.GCP.HP



Point ID: 12.GCP.HP

Northing: 511945.738 Meters

Easting: 1414477.425 Meters

Orthometric Height: 3.549 Meters

Latitude: 26° 42' 53.67691" N

Longitude: 81° 49' 53.31552" W

Ellipsoid Height: -20.717 Meters

13.GCP.HP



Point ID: 13.GCP.HP

Northing: 507207.206 Meters

Easting: 1407732.592 Meters

Orthometric Height: 2.678 Meters

Latitude: 26° 40' 53.03544" N

Longitude: 81° 54' 18.13381" W

Ellipsoid Height: -21.453 Meters

15.GCP.HP



Point ID: 15.GCP.HP

Northing: 499277.734 Meters

Easting: 1392278.94 Meters

Orthometric Height: 0.55 Meters

Latitude: 26° 37' 50.65784" N

Longitude: 82° 04' 08.76567" W

Ellipsoid Height: -23.205 Meters

16.GCP.HP



Point ID: 16.GCP.HP

Northing: 504929.676 Meters

Easting: 1383131.521 Meters

Orthometric Height: 1.462 Meters

Latitude: 26° 41' 37.24014" N

Longitude: 82° 09' 04.14824" W

Ellipsoid Height: -22.245 Meters

19.GCP.HP



Point ID: 19.GCP.HP

Northing: 495752.786 Meters

Easting: 1396203.759 Meters

Orthometric Height: 1.373 Meters

Latitude: 26° 35' 37.74257" N

Longitude: 82° 02' 07.93784" W

Ellipsoid Height: -22.417 Meters

200.GCP.HP

**NO IMAGE
AVAILABLE**

Point ID: 200.GCP.HP

Northing: 432080.628 Meters

Easting: 1435679.153 Meters

Orthometric Height: 1.777 Meters

Latitude: 25° 58' 03.30547" N

Longitude: 81° 44' 29.05140" W

Ellipsoid Height: -21.435 Meters

201.GCP.HP

**NO IMAGE
AVAILABLE**

Point ID: 201.GCP.HP

Northing: 428545.648 Meters

Easting: 1439043.017 Meters

Orthometric Height: 2.924 Meters

Latitude: 25° 55' 52.17201" N

Longitude: 81° 42' 49.44016" W

Ellipsoid Height: -20.265 Meters

22.GCP.HP



Point ID: 22.GCP.HP

Northing: 494731.981 Meters

Easting: 1421542.834 Meters

Orthometric Height: 7.138 Meters

Latitude: 26° 33' 02.18159" N

Longitude: 81° 47' 14.45594" W

Ellipsoid Height: -17.118 Meters

24.GCP.HP



Point ID: 24.GCP.HP

Northing: 483259.417 Meters

Easting: 1424540.036 Meters

Orthometric Height: 5.433 Meters

Latitude: 26° 26' 36.12912" N

Longitude: 81° 46' 29.53145" W

Ellipsoid Height: -18.714 Meters

27.GCP.HP



Point ID: 27.GCP.HP

Northing: 453097.729 Meters

Easting: 1431312.36 Meters

Orthometric Height: 2.706 Meters

Latitude: 26° 09' 45.98537" N

Longitude: 81° 45' 11.04060" W

Ellipsoid Height: -20.873 Meters

30.GCP.HP



Point ID: 30.GCP.HP

Northing: 489581.244 Meters

Easting: 1429249.444 Meters

Orthometric Height: 8.368 Meters

Latitude: 26° 29' 37.76430" N

Longitude: 81° 43' 08.87037" W

Ellipsoid Height: -15.912 Meters

33.GCP.HP



Point ID: 33.GCP.HP

Northing: 472640.757 Meters

Easting: 1462692.951 Meters

Orthometric Height: 6.231 Meters

Latitude: 26° 17' 43.62911" N

Longitude: 81° 24' 57.28655" W

Ellipsoid Height: -18.054 Meters

34.GCP.HP



Point ID: 34.GCP.HP

Northing: 475234.316 Meters

Easting: 1473557.68 Meters

Orthometric Height: 6.088 Meters

Latitude: 26° 18' 12.97597" N

Longitude: 81° 18' 19.18397" W

Ellipsoid Height: -18.378 Meters

36.GCP.HP



Point ID: 36.GCP.HP

Northing: 457683.876 Meters

Easting: 1472235.821 Meters

Orthometric Height: 4.79 Meters

Latitude: 26° 08' 51.39154" N

Longitude: 81° 20' 42.28009" W

Ellipsoid Height: -19.441 Meters

37.GCP.HP



Point ID: 37.GCP.HP

Northing: 448206.227 Meters

Easting: 1473763.653 Meters

Orthometric Height: 3.808 Meters

Latitude: 26° 03' 36.70795" N

Longitude: 81° 20' 40.35625" W

Ellipsoid Height: -20.316 Meters

39.GCP.HP



Point ID: 39.GCP.HP

Northing: 431358.634 Meters

Easting: 1482843.086 Meters

Orthometric Height: 1.477 Meters

Latitude: 25° 53' 44.98059" N

Longitude: 81° 16' 53.15177" W

Ellipsoid Height: -22.477 Meters

53.GCP.HP



Point ID: 53.GCP.HP

Northing: 463276.151 Meters

Easting: 1436420.222 Meters

Orthometric Height: 4.793 Meters

Latitude: 26° 14' 50.71616" N

Longitude: 81° 41' 16.24016" W

Ellipsoid Height: -19.063 Meters

55.GCP.HP



Point ID: 55.GCP.HP

Northing: 461609.58 Meters

Easting: 1439397.896 Meters

Orthometric Height: 3.882 Meters

Latitude: 26° 13' 42.07562" N

Longitude: 81° 39' 39.99602" W

Ellipsoid Height: -19.972 Meters

6.GCP.HP



Point ID: 6.GCP.HP

Northing: 504991.841 Meters

Easting: 1439262.415 Meters

Orthometric Height: 7.56 Meters

Latitude: 26° 37' 07.21919" N

Longitude: 81° 35' 50.78885" W

Ellipsoid Height: -16.9 Meters

64.GCP.HP



Point ID: 64.GCP.HP

Northing: 444155.475 Meters

Easting: 1451728.135 Meters

Orthometric Height: 1.979 Meters

Latitude: 26° 03' 15.59179" N

Longitude: 81° 33' 58.89731" W

Ellipsoid Height: -21.669 Meters

73.GCP.HP



Point ID: 73.GCP.HP

Northing: 469605.269 Meters

Easting: 1445536.039 Meters

Orthometric Height: 4.875 Meters

Latitude: 26° 17' 30.75277" N

Longitude: 81° 35' 20.06749" W

Ellipsoid Height: -19.197 Meters

8.GCP.HP



Point ID: 8.GCP.HP

Northing: 512775.145 Meters

Easting: 1437914.195 Meters

Orthometric Height: 5.598 Meters

Latitude: 26° 41' 25.67266" N

Longitude: 81° 35' 56.45276" W

Ellipsoid Height: -18.881 Meters

2.GCP.PS



Point ID: 2.GCP.PS

Northing: 488220.258 Meters

Easting: 1472081.289 Meters

Orthometric Height: 8.343 Meters

Latitude: 26° 25' 20.69095" N

Longitude: 81° 17' 59.80554" W

Ellipsoid Height: -16.165 Meters

4.GCP.PS



Point ID: 4.GCP.PS

Northing: 494094.675 Meters

Easting: 1448767.2 Meters

Orthometric Height: 8.491 Meters

Latitude: 26° 30' 27.52047" N

Longitude: 81° 31' 12.99600" W

Ellipsoid Height: -15.916 Meters

5.GCP.PS



Point ID: 5.GCP.PS

Northing: 495159.569 Meters

Easting: 1439986.327 Meters

Orthometric Height: 9.572 Meters

Latitude: 26° 31' 45.48716" N

Longitude: 81° 36' 18.35039" W

Ellipsoid Height: -14.827 Meters

62.GCP.PS



Point ID: 62.GCP.PS

Northing: 450241.343 Meters

Easting: 1450718.702 Meters

Orthometric Height: 2.462 Meters

Latitude: 26° 06' 37.80998" N

Longitude: 81° 34' 01.64598" W

Ellipsoid Height: -21.28 Meters

Non-Vegetated Vertical Accuracy Checkpoints Bare Earth

The Map shows the overall distribution of the Non-Vegetated Vertical Accuracy Checkpoint, Bare Earth throughout the AOI. The following tables contain a list of the control using Easting, Northing, and Orthometric height. The coordinate system displayed is Albers Equal Area, North American Datum 1983 (2011), North American Vertical Datum of 1988, Geoid12B and using Meters for measurement.

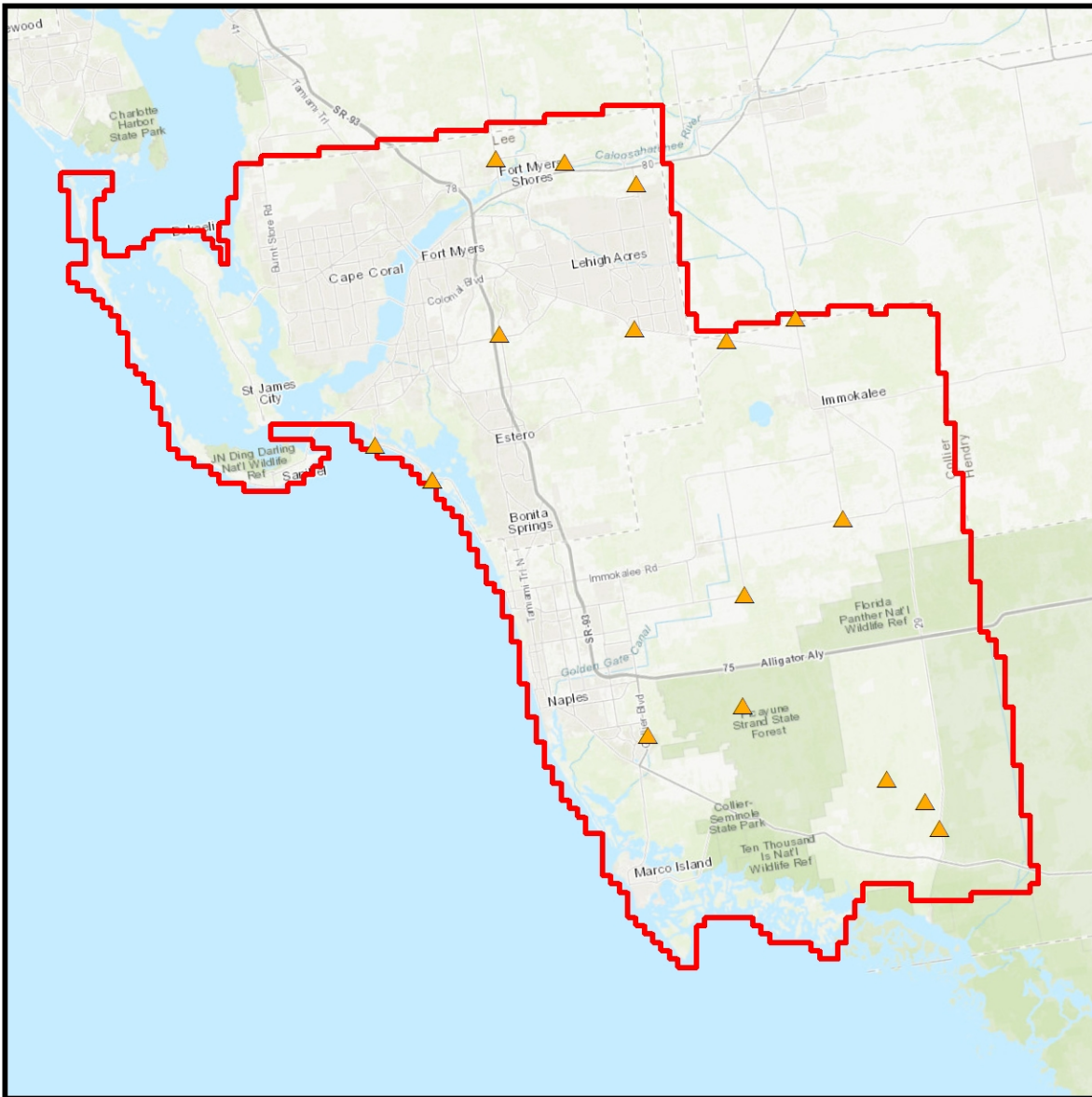


TABLE: Bare Earth

Point ID	Easting	Northing	Ortho
10.NVA.BG	1429425.779	515325.153	3.41
11.NVA.BG	1421170.411	515769.438	4.264
22.NVA.BG	1421522.846	494758.625	6.78
3.NVA.BG	1457019.356	496742.657	11.471
33.NVA.BG	1462707.999	472667.846	6.448
4.NVA.BG	1448771.46	494077.082	8.397
58.NVA.BG	1450976.139	463549.289	3.796
62.NVA.BG	1450698.024	450245.648	2.349
79.NVA.BG	1437705.717	495431.952	8.363
8.NVA.BG	1437921.897	512787.835	5.451
85.NVA.BG	1406676.964	481522.65	1.945
86.NVA.BG	1413522.988	477328.225	1.666
86.NVA.BG.1	1413536.334	477334.477	1.135
89.NVA.BG	1474275.908	435560.803	1.433
90.NVA.BG	1467998.911	441456.45	2.29
91.NVA.BG	1472591.553	438842.866	1.897
97.NVA.BG	1439401.633	446781.507	3.132

10.NVA.BG



Point ID: 10.NVA.BG

Northing: 515325.153 Meters

Easting: 1429425.779 Meters

Orthometric Height: 3.41 Meters

Latitude: 26° 43' 29.97061" N

Longitude: 81° 40' 44.12502" W

Ellipsoid Height: -21.034 Meters

11.NVA.BG



Point ID: 11.NVA.BG

Northing: 515769.438 Meters

Easting: 1421170.411 Meters

Orthometric Height: 4.264 Meters

Latitude: 26° 44' 24.77799" N

Longitude: 81° 45' 35.04320" W

Ellipsoid Height: -20.101 Meters

22.NVA.BG



Point ID: 22.NVA.BG

Northing: 494758.625 Meters

Easting: 1421522.846 Meters

Orthometric Height: 6.78 Meters

Latitude: 26° 33' 03.14153" N

Longitude: 81° 47' 15.02231" W

Ellipsoid Height: -17.476 Meters

3.NVA.BG



Point ID: 3.NVA.BG

Northing: 496742.657 Meters

Easting: 1457019.356 Meters

Orthometric Height: 11.471 Meters

Latitude: 26° 31' 12.07808" N

Longitude: 81° 26' 06.20700" W

Ellipsoid Height: -12.961 Meters

33.NVA.BG



Point ID: 33.NVA.BG

Northing: 472667.846 Meters

Easting: 1462707.999 Meters

Orthometric Height: 6.448 Meters

Latitude: 26° 17' 44.43078" N

Longitude: 81° 24' 56.60679" W

Ellipsoid Height: -17.839 Meters

4.NVA.BG



Point ID: 4.NVA.BG

Northing: 494077.082 Meters

Easting: 1448771.46 Meters

Orthometric Height: 8.397 Meters

Latitude: 26° 30' 26.92998" N

Longitude: 81° 31' 12.94082" W

Ellipsoid Height: -16.01 Meters

58.NVA.BG



Point ID: 58.NVA.BG

Northing: 463549.289 Meters

Easting: 1450976.139 Meters

Orthometric Height: 3.796 Meters

Latitude: 26° 13' 47.65060" N

Longitude: 81° 32' 40.62383" W

Ellipsoid Height: -20.214 Meters

62.NVA.BG



Point ID: 62.NVA.BG

Northing: 450245.648 Meters

Easting: 1450698.024 Meters

Orthometric Height: 2.349 Meters

Latitude: 26° 06' 38.05204" N

Longitude: 81° 34' 02.35202" W

Ellipsoid Height: -21.392 Meters

79.NVA.BG



Point ID: 79.NVA.BG

Northing: 495431.952 Meters

Easting: 1437705.717 Meters

Orthometric Height: 8.363 Meters

Latitude: 26° 32' 05.55967" N

Longitude: 81° 37' 37.70603" W

Ellipsoid Height: -16.031 Meters

8.NVA.BG



Point ID: 8.NVA.BG

Northing: 512787.835 Meters

Easting: 1437921.897 Meters

Orthometric Height: 5.451 Meters

Latitude: 26° 41' 26.04511" N

Longitude: 81° 35' 56.11049" W

Ellipsoid Height: -19.029 Meters

85.NVA.BG



Point ID: 85.NVA.BG

Northing: 481522.65 Meters

Easting: 1406676.964 Meters

Orthometric Height: 1.945 Meters

Latitude: 26° 27' 06.57328" N

Longitude: 81° 57' 11.47668" W

Ellipsoid Height: -21.882 Meters

86.NVA.BG



Point ID: 86.NVA.BG

Northing: 477328.225 Meters

Easting: 1413522.988 Meters

Orthometric Height: 1.666 Meters

Latitude: 26° 24' 17.63179" N

Longitude: 81° 53' 31.18302" W

Ellipsoid Height: -22.231 Meters

86.NVA.BG.1



Point ID: 86.NVA.BG.1
Northing: 477334.477 Meters
Easting: 1413536.334 Meters
Orthometric Height: 1.135 Meters
Latitude: 26° 24' 17.76963" N
Longitude: 81° 53' 30.67738" W
Ellipsoid Height: -22.763 Meters

89.NVA.BG



Point ID: 89.NVA.BG

Northing: 435560.803 Meters

Easting: 1474275.908 Meters

Orthometric Height: 1.433 Meters

Latitude: 25° 56' 44.39797" N

Longitude: 81° 21' 31.50076" W

Ellipsoid Height: -22.458 Meters

90.NVA.BG



Point ID: 90.NVA.BG

Northing: 441456.45 Meters

Easting: 1467998.911 Meters

Orthometric Height: 2.29 Meters

Latitude: 26° 00' 26.98344" N

Longitude: 81° 24' 40.29790" W

Ellipsoid Height: -21.601 Meters

91.NVA.BG



Point ID: 91.NVA.BG

Northing: 438842.866 Meters

Easting: 1472591.553 Meters

Orthometric Height: 1.897 Meters

Latitude: 25° 58' 39.23098" N

Longitude: 81° 22' 12.85122" W

Ellipsoid Height: -22.035 Meters

97.NVA.BG



Point ID: 97.NVA.BG

Northing: 446781.507 Meters

Easting: 1439401.633 Meters

Orthometric Height: 3.132 Meters

Latitude: 26° 05' 41.59151" N

Longitude: 81° 40' 59.37013" W

Ellipsoid Height: -20.397 Meters

Non-Vegetated Vertical Accuracy Checkpoints Hard Pavement

The Map shows the overall distribution of the Non-Vegetated Vertical Accuracy Checkpoint, Hard Pavement throughout the AOI. The following tables contain a list of the control using Easting, Northing, and Orthometric height. The coordinate system displayed is Albers Equal Area, North American Datum 1983 (2011), North American Vertical Datum of 1988, Geoid12B and using Meters for measurement.

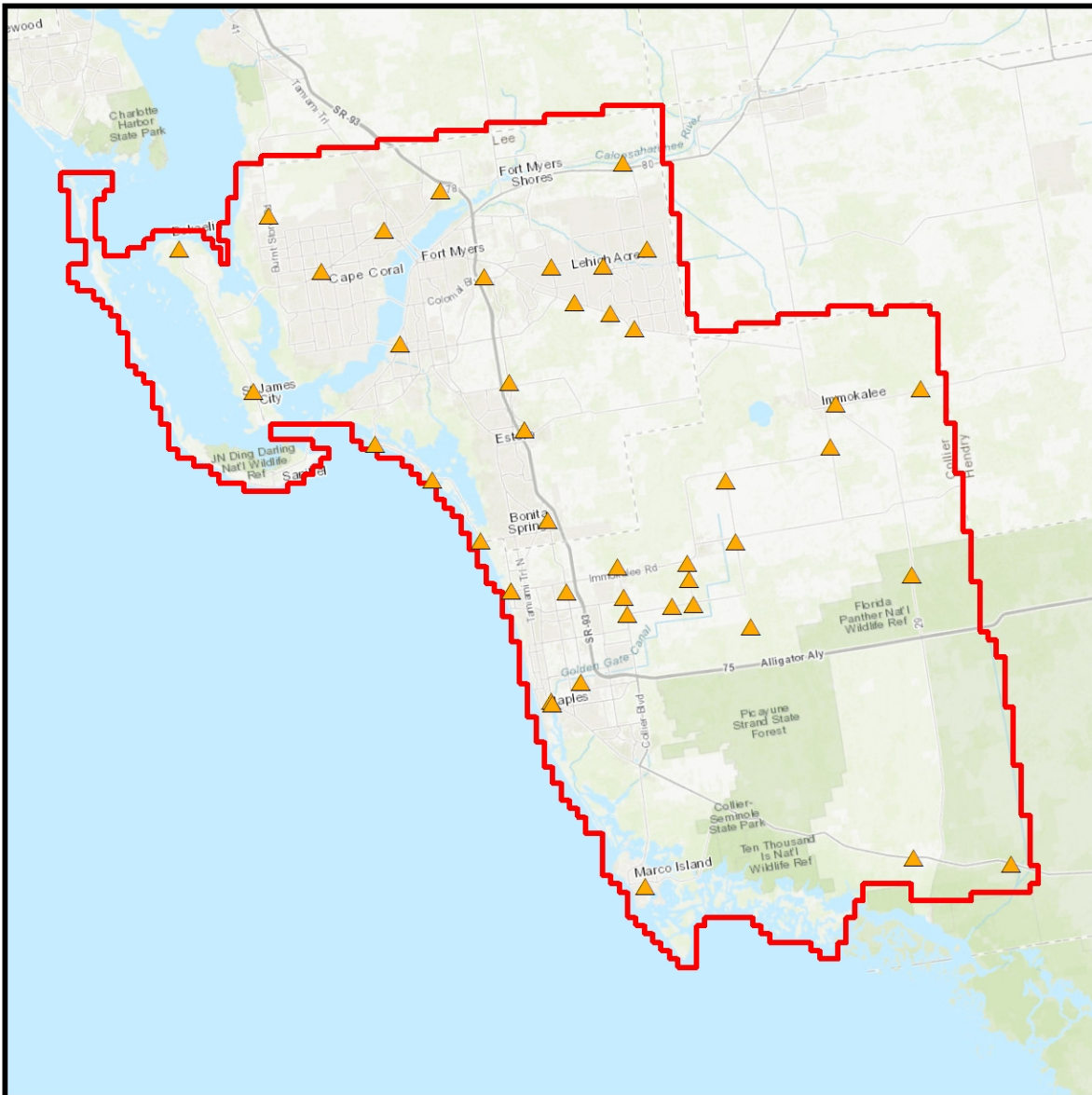


TABLE: Hard Pavement

Point ID	Easting	Northing	Ortho
1.NVA.HP	1461914.346	486401.595	10.039
12.NVA.HP	1414479.668	511928.621	3.961
13.NVA.HP	1407750.267	507194.368	2.667
14.NVA.HP	1400180.216	502303.963	3.774
16.NVA.HP	1383115.003	504925.553	1.514
17.NVA.HP	1392099.543	487959.909	1.655
18.NVA.HP	1393894.828	508925.962	2.376
2.NVA.HP	1472090.785	488227.775	8.497
20.NVA.HP	1409659.785	493586.712	2.168
201.NVA.HP	1439041.275	428569.592	2.725
21.NVA.HP	1419697.208	501688.836	6.476
23.NVA.HP	1422686.911	488989.611	6.911
24.NVA.HP	1424540.029	483259.417	5.432
24.NVA.HP2	1424563.301	483257.352	5.54
25.NVA.HP	1427372.615	472437.543	3.676
26.NVA.HP	1429628.913	463851.488	4.853
27.NVA.HP	1431323.855	453103.767	2.63
28.NVA.HP	1435710.706	466849.024	4.34
32.NVA.HP	1461276.289	481276.636	7.375
35.NVA.HP	1471011.549	465957.9	5.449
39.NVA.HP	1482847.484	431316.837	0.918
50.NVA.HP	1427785.464	450759.76	1.357
51.NVA.HP	1427832.634	450462.779	2.1
52.NVA.HP	1436471.77	463278.196	4.472
54.NVA.HP	1436862.879	461260.549	3.657
56.NVA.HP	1442273.497	462131.005	4
57.NVA.HP	1444779.219	462437.238	4.315
59.NVA.HP	1451646.464	459681.849	3.904
6.NVA.HP	1439280.026	504996.644	7.594
71.NVA.HP	1444301.939	465364.203	3.818
72.NVA.HP	1444034.708	467343.119	4.325
74.NVA.HP	1449885.721	469943.326	4.947
75.NVA.HP	1448688.204	477237.448	6.455
79.NVA.HP	1437722.735	495431.005	9.457
80.NVA.HP	1434895.466	497260.448	9.203
81.NVA.HP	1430602.204	498545.731	9.386
82.NVA.HP	1427822.115	502834.617	6.946
83.NVA.HP	1433945.756	502935.736	7.763
85.NVA.HP	1406647.777	481560.608	1.607
86.NVA.HP	1413537.694	477318.349	1.455
87.NVA.HP	1419314.632	470028.825	1.876
88.NVA.HP	1422920.381	464020.153	2.061
88.NVA.HQ	1422927.46	464010.568	2.083

9.NVA.HP	1436396.156	515222.557	3.774
92.NVA.HP	1471205.172	432085.109	0.951

1.NVA.HP



Point ID: 1.NVA.HP

Northing: 486401.595 Meters

Easting: 1461914.346 Meters

Orthometric Height: 10.039 Meters

Latitude: 26° 25' 12.95794" N

Longitude: 81° 24' 09.52074" W

Ellipsoid Height: -14.367 Meters

12.NVA.HP



Point ID: 12.NVA.HP

Northing: 511928.621 Meters

Easting: 1414479.668 Meters

Orthometric Height: 3.961 Meters

Latitude: 26° 42' 53.11219" N

Longitude: 81° 49' 53.32712" W

Ellipsoid Height: -20.305 Meters

13.NVA.HP



Point ID: 13.NVA.HP

Northing: 507194.368 Meters

Easting: 1407750.267 Meters

Orthometric Height: 2.667 Meters

Latitude: 26° 40' 52.53451" N

Longitude: 81° 54' 17.57418" W

Ellipsoid Height: -21.464 Meters

14.NVA.HP



Point ID: 14.NVA.HP

Northing: 502303.963 Meters

Easting: 1400180.216 Meters

Orthometric Height: 3.774 Meters

Latitude: 26° 38' 50.74748" N

Longitude: 81° 59' 12.29138" W

Ellipsoid Height: -20.158 Meters

16.NVA.HP



Point ID: 16.NVA.HP

Northing: 504925.553 Meters

Easting: 1383115.003 Meters

Orthometric Height: 1.514 Meters

Latitude: 26° 41' 37.18513" N

Longitude: 82° 09' 04.75676" W

Ellipsoid Height: -22.192 Meters

17.NVA.HP



Point ID: 17.NVA.HP

Northing: 487959.909 Meters

Easting: 1392099.543 Meters

Orthometric Height: 1.655 Meters

Latitude: 26° 31' 45.02005" N

Longitude: 82° 05' 14.39338" W

Ellipsoid Height: -21.998 Meters

18.NVA.HP



Point ID: 18.NVA.HP

Northing: 508925.962 Meters

Easting: 1393894.828 Meters

Orthometric Height: 2.376 Meters

Latitude: 26° 42' 55.25758" N

Longitude: 82° 02' 20.70282" W

Ellipsoid Height: -21.486 Meters

2.NVA.HP



Point ID: 2.NVA.HP

Northing: 488227.775 Meters

Easting: 1472090.785 Meters

Orthometric Height: 8.497 Meters

Latitude: 26° 25' 20.88628" N

Longitude: 81° 17' 59.42810" W

Ellipsoid Height: -16.011 Meters

20.NVA.HP



Point ID: 20.NVA.HP

Northing: 493586.712 Meters

Easting: 1409659.785 Meters

Orthometric Height: 2.168 Meters

Latitude: 26° 33' 22.82493" N

Longitude: 81° 54' 21.96046" W

Ellipsoid Height: -21.872 Meters

201.NVA.HP

**NO IMAGE
AVAILABLE**

Point ID: 201.NVA.HP
Northing: 428569.592 Meters
Easting: 1439041.275 Meters
Orthometric Height: 2.725 Meters
Latitude: 25° 55' 52.95702" N
Longitude: 81° 42' 49.37381" W
Ellipsoid Height: -20.464 Meters

21.NVA.HP



Point ID: 21.NVA.HP

Northing: 501688.836 Meters

Easting: 1419697.208 Meters

Orthometric Height: 6.476 Meters

Latitude: 26° 36' 56.35438" N

Longitude: 81° 47' 42.75080" W

Ellipsoid Height: -17.821 Meters

23.NVA.HP



Point ID: 23.NVA.HP

Northing: 488989.611 Meters

Easting: 1422686.911 Meters

Orthometric Height: 6.911 Meters

Latitude: 26° 29' 50.70450" N

Longitude: 81° 47' 04.57546" W

Ellipsoid Height: -17.293 Meters

24.NVA.HP

**NO IMAGE
AVAILABLE**

Point ID: 24.NVA.HP

Northing: 483259.417 Meters

Easting: 1424540.029 Meters

Orthometric Height: 5.432 Meters

Latitude: 26° 26' 36.12915" N

Longitude: 81° 46' 29.53169" W

Ellipsoid Height: -18.715 Meters

24.NVA.HP2



Point ID: 24.NVA.HP2
Northing: 483257.352 Meters
Easting: 1424563.301 Meters
Orthometric Height: 5.54 Meters
Latitude: 26° 26' 35.94862" N
Longitude: 81° 46' 28.71856" W
Ellipsoid Height: -18.607 Meters

25.NVA.HP



Point ID: 25.NVA.HP

Northing: 472437.543 Meters

Easting: 1427372.615 Meters

Orthometric Height: 3.676 Meters

Latitude: 26° 20' 31.82679" N

Longitude: 81° 45' 47.06652" W

Ellipsoid Height: -20.293 Meters

26.NVA.HP



Point ID: 26.NVA.HP

Northing: 463851.488 Meters

Easting: 1429628.913 Meters

Orthometric Height: 4.853 Meters

Latitude: 26° 15' 42.66324" N

Longitude: 81° 45' 13.12935" W

Ellipsoid Height: -18.948 Meters

27.NVA.HP



Point ID: 27.NVA.HP

Northing: 453103.767 Meters

Easting: 1431323.855 Meters

Orthometric Height: 2.63 Meters

Latitude: 26° 09' 46.12477" N

Longitude: 81° 45' 10.60262" W

Ellipsoid Height: -20.949 Meters

28.NVA.HP



Point ID: 28.NVA.HP

Northing: 466849.024 Meters

Easting: 1435710.706 Meters

Orthometric Height: 4.34 Meters

Latitude: 26° 16' 49.94023" N

Longitude: 81° 41' 22.15409" W

Ellipsoid Height: -19.582 Meters

32.NVA.HP



Point ID: 32.NVA.HP

Northing: 481276.636 Meters

Easting: 1461276.289 Meters

Orthometric Height: 7.375 Meters

Latitude: 26° 22' 30.28221" N

Longitude: 81° 25' 00.14659" W

Ellipsoid Height: -16.988 Meters

35.NVA.HP



Point ID: 35.NVA.HP
Northing: 465957.9 Meters
Easting: 1471011.549 Meters
Orthometric Height: 5.449 Meters
Latitude: 26° 13' 25.49112" N
Longitude: 81° 20' 40.09629" W
Ellipsoid Height: -18.875 Meters

39.NVA.HP



Point ID: 39.NVA.HP

Northing: 431316.837 Meters

Easting: 1482847.484 Meters

Orthometric Height: 0.918 Meters

Latitude: 25° 53' 43.60379" N

Longitude: 81° 16' 53.22663" W

Ellipsoid Height: -23.034 Meters

50.NVA.HP



Point ID: 50.NVA.HP

Northing: 450759.76 Meters

Easting: 1427785.464 Meters

Orthometric Height: 1.357 Meters

Latitude: 26° 08' 47.45735" N

Longitude: 81° 47' 27.97683" W

Ellipsoid Height: -22.137 Meters

51.NVA.HP



Point ID: 51.NVA.HP

Northing: 450462.779 Meters

Easting: 1427832.634 Meters

Orthometric Height: 2.1 Meters

Latitude: 26° 08' 37.60185" N

Longitude: 81° 47' 27.89098" W

Ellipsoid Height: -21.388 Meters

52.NVA.HP



Point ID: 52.NVA.HP

Northing: 463278.196 Meters

Easting: 1436471.77 Meters

Orthometric Height: 4.472 Meters

Latitude: 26° 14' 50.52899" N

Longitude: 81° 41' 14.40798" W

Ellipsoid Height: -19.385 Meters

54.NVA.HP



Point ID: 54.NVA.HP

Northing: 461260.549 Meters

Easting: 1436862.879 Meters

Orthometric Height: 3.657 Meters

Latitude: 26° 13' 43.24323" N

Longitude: 81° 41' 11.40853" W

Ellipsoid Height: -20.16 Meters

56.NVA.HP



Point ID: 56.NVA.HP

Northing: 462131.005 Meters

Easting: 1442273.497 Meters

Orthometric Height: 4 Meters

Latitude: 26° 13' 44.78943" N

Longitude: 81° 37' 55.62765" W

Ellipsoid Height: -19.896 Meters

57.NVA.HP



Point ID: 57.NVA.HP

Northing: 462437.238 Meters

Easting: 1444779.219 Meters

Orthometric Height: 4.315 Meters

Latitude: 26° 13' 42.33232" N

Longitude: 81° 36' 25.48076" W

Ellipsoid Height: -19.613 Meters

59.NVA.HP



Point ID: 59.NVA.HP

Northing: 459681.849 Meters

Easting: 1451646.464 Meters

Orthometric Height: 3.904 Meters

Latitude: 26° 11' 39.05284" N

Longitude: 81° 32' 37.88897" W

Ellipsoid Height: -20.033 Meters

6.NVA.HP



Point ID: 6.NVA.HP

Northing: 504996.644 Meters

Easting: 1439280.026 Meters

Orthometric Height: 7.594 Meters

Latitude: 26° 37' 07.28754" N

Longitude: 81° 35' 50.13807" W

Ellipsoid Height: -16.867 Meters

71.NVA.HP



Point ID: 71.NVA.HP

Northing: 465364.203 Meters

Easting: 1444301.939 Meters

Orthometric Height: 3.818 Meters

Latitude: 26° 15' 19.49931" N

Longitude: 81° 36' 26.56058" W

Ellipsoid Height: -20.164 Meters

72.NVA.HP



Point ID: 72.NVA.HP

Northing: 467343.119 Meters

Easting: 1444034.708 Meters

Orthometric Height: 4.325 Meters

Latitude: 26° 16' 24.91511" N

Longitude: 81° 36' 25.33141" W

Ellipsoid Height: -19.692 Meters

74.NVA.HP



Point ID: 74.NVA.HP

Northing: 469943.326 Meters

Easting: 1449885.721 Meters

Orthometric Height: 4.947 Meters

Latitude: 26° 17' 20.14191" N

Longitude: 81° 32' 44.52019" W

Ellipsoid Height: -19.171 Meters

75.NVA.HP



Point ID: 75.NVA.HP

Northing: 477237.448 Meters

Easting: 1448688.204 Meters

Orthometric Height: 6.455 Meters

Latitude: 26° 21' 22.26857" N

Longitude: 81° 32' 47.33051" W

Ellipsoid Height: -17.762 Meters

79.NVA.HP



Point ID: 79.NVA.HP

Northing: 495431.005 Meters

Easting: 1437722.735 Meters

Orthometric Height: 9.457 Meters

Latitude: 26° 32' 05.44509" N

Longitude: 81° 37' 37.10797" W

Ellipsoid Height: -14.937 Meters

80.NVA.HP



Point ID: 80.NVA.HP

Northing: 497260.448 Meters

Easting: 1434895.466 Meters

Orthometric Height: 9.203 Meters

Latitude: 26° 33' 18.58416" N

Longitude: 81° 39' 07.45429" W

Ellipsoid Height: -15.194 Meters

81.NVA.HP



Point ID: 81.NVA.HP

Northing: 498545.731 Meters

Easting: 1430602.204 Meters

Orthometric Height: 9.386 Meters

Latitude: 26° 34' 21.28764" N

Longitude: 81° 41' 32.75963" W

Ellipsoid Height: -14.997 Meters

82.NVA.HP



Point ID: 82.NVA.HP

Northing: 502834.617 Meters

Easting: 1427822.115 Meters

Orthometric Height: 6.946 Meters

Latitude: 26° 36' 53.72121" N

Longitude: 81° 42' 48.31205" W

Ellipsoid Height: -17.45 Meters

83.NVA.HP



Point ID: 83.NVA.HP

Northing: 502935.736 Meters

Easting: 1433945.756 Meters

Orthometric Height: 7.763 Meters

Latitude: 26° 36' 26.91323" N

Longitude: 81° 39' 10.51558" W

Ellipsoid Height: -16.672 Meters

85.NVA.HP



Point ID: 85.NVA.HP

Northing: 481560.608 Meters

Easting: 1406647.777 Meters

Orthometric Height: 1.607 Meters

Latitude: 26° 27' 07.94342" N

Longitude: 81° 57' 12.31047" W

Ellipsoid Height: -22.22 Meters

86.NVA.HP



Point ID: 86.NVA.HP

Northing: 477318.349 Meters

Easting: 1413537.694 Meters

Orthometric Height: 1.455 Meters

Latitude: 26° 24' 17.24067" N

Longitude: 81° 53' 30.71467" W

Ellipsoid Height: -22.442 Meters

87.NVA.HP



Point ID: 87.NVA.HP

Northing: 470028.825 Meters

Easting: 1419314.632 Meters

Orthometric Height: 1.876 Meters

Latitude: 26° 19' 53.08521" N

Longitude: 81° 50' 44.91996" W

Ellipsoid Height: -21.973 Meters

88.NVA.HP



Point ID: 88.NVA.HP

Northing: 464020.153 Meters

Easting: 1422920.381 Meters

Orthometric Height: 2.061 Meters

Latitude: 26° 16' 20.87877" N

Longitude: 81° 49' 09.33203" W

Ellipsoid Height: -21.689 Meters

88.NVA.HQ



Point ID: 88.NVA.HQ

Northing: 464010.568 Meters

Easting: 1422927.46 Meters

Orthometric Height: 2.083 Meters

Latitude: 26° 16' 20.53371" N

Longitude: 81° 49' 09.13276" W

Ellipsoid Height: -21.667 Meters

9.NVA.HP



Point ID: 9.NVA.HP

Northing: 515222.557 Meters

Easting: 1436396.156 Meters

Orthometric Height: 3.774 Meters

Latitude: 26° 42' 52.33222" N

Longitude: 81° 36' 37.09279" W

Ellipsoid Height: -20.703 Meters

92.NVA.HP



Point ID: 92.NVA.HP

Northing: 432085.109 Meters

Easting: 1471205.172 Meters

Orthometric Height: 0.951 Meters

Latitude: 25° 55' 07.18726" N

Longitude: 81° 23' 38.51152" W

Ellipsoid Height: -22.795 Meters

Non-Vegetated Vertical Accuracy Checkpoints Packed Sand

The Map shows the overall distribution of the Non-Vegetated Vertical Accuracy Checkpoint, Packed Sand throughout the AOI. The following tables contain a list of the control using Easting, Northing, and Orthometric height. The coordinate system displayed is Albers Equal Area, North American Datum 1983 (2011), North American Vertical Datum of 1988, Geoid12B and using Meters for measurement.

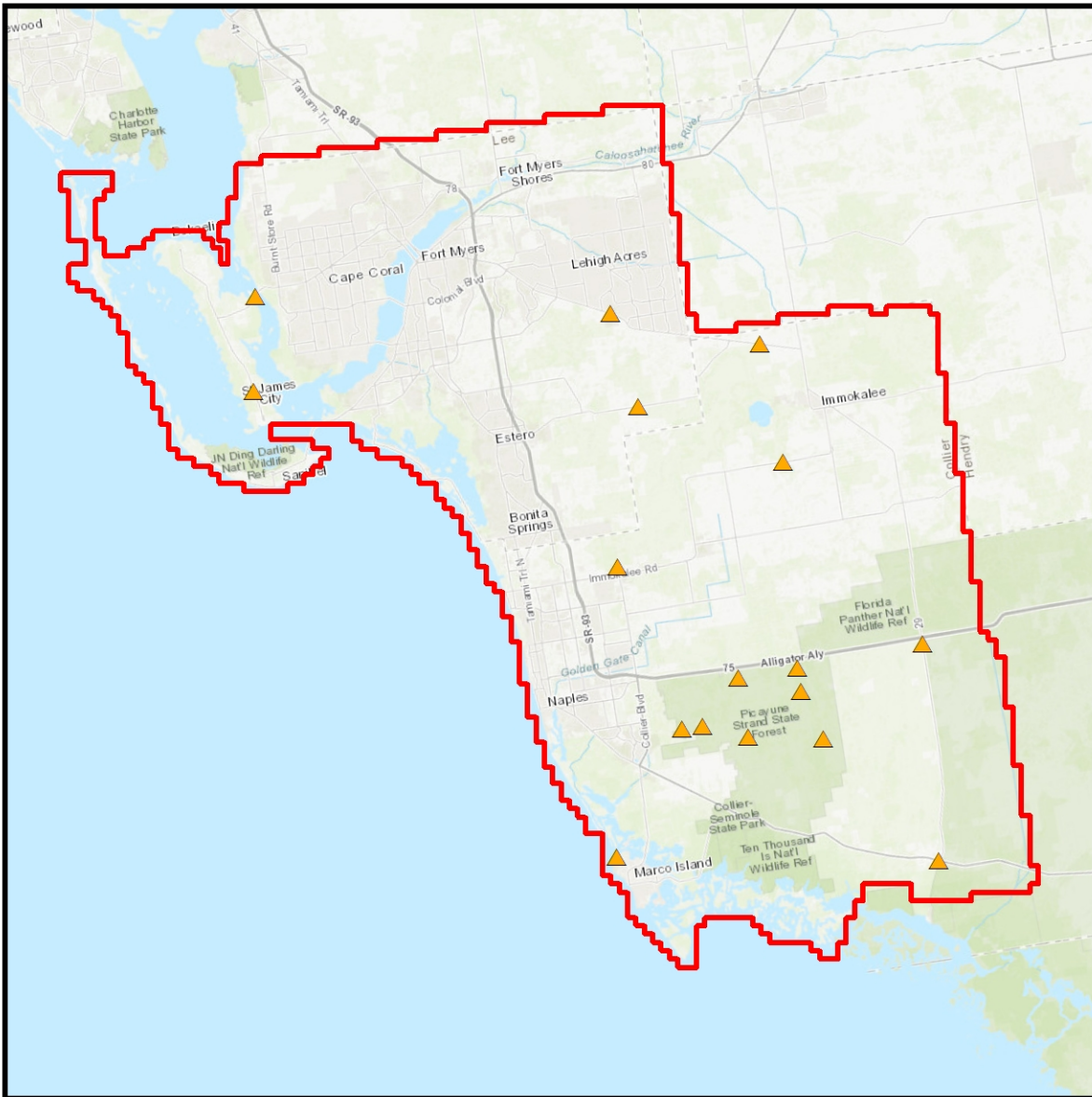


TABLE: Packed Sand

Point ID	Easting	Northing	Ortho
100.NVA.PS	1445893.523	447849.196	2.586
15.NVA.PS	1392265.809	499274.646	0.703
17.NVA.PS	1392075.514	487955.645	1.529
200.NVA.PS	1435645.211	432100.237	1.521
28.NVA.PS	1435709.868	466868.178	4.154
31.NVA.PS	1438216.234	486117.745	8.538
36.NVA.PS	1472223.292	457687.548	3.829
39.NVA.PS	1474180.317	431697.243	0.996
61.NVA.PS	1450205.648	453607.469	2.946
63.NVA.PS	1451338.696	446519.84	2.216
67.NVA.PS	1460323.241	446319.093	2.078
69.NVA.PS	1457687.854	452005.266	4.684
70.NVA.PS	1457232.073	454742.889	3.045
76.NVA.PS	1455533.032	479421.402	6.203
78.NVA.PS2	1452718.433	493615.703	10.778
80.NVA.PS	1434882.494	497268.666	8.55
98.NVA.PS	1443432.881	447506.09	2.521

100.NVA.PS



Point ID: 100.NVA.PS

Northing: 447849.196 Meters

Easting: 1445893.523 Meters

Orthometric Height: 2.586 Meters

Latitude: 26° 05' 44.18205" N

Longitude: 81° 37' 04.69839" W

Ellipsoid Height: -21.044 Meters

15.NVA.PS



Point ID: 15.NVA.PS

Northing: 499274.646 Meters

Easting: 1392265.809 Meters

Orthometric Height: 0.703 Meters

Latitude: 26° 37' 50.62065" N

Longitude: 82° 04' 09.24807" W

Ellipsoid Height: -23.051 Meters

17.NVA.PS



Point ID: 17.NVA.PS

Northing: 487955.645 Meters

Easting: 1392075.514 Meters

Orthometric Height: 1.529 Meters

Latitude: 26° 31' 44.99671" N

Longitude: 82° 05' 15.26791" W

Ellipsoid Height: -22.124 Meters

200.NVA.PS

**NO IMAGE
AVAILABLE**

Point ID: 200.NVA.PS

Northing: 432100.237 Meters

Easting: 1435645.211 Meters

Orthometric Height: 1.521 Meters

Latitude: 25° 58' 04.10769" N

Longitude: 81° 44' 30.14238" W

Ellipsoid Height: -21.692 Meters

28.NVA.PS



Point ID: 28.NVA.PS

Northing: 466868.178 Meters

Easting: 1435709.868 Meters

Orthometric Height: 4.154 Meters

Latitude: 26° 16' 50.56476" N

Longitude: 81° 41' 22.08099" W

Ellipsoid Height: -19.769 Meters

31.NVA.PS



Point ID: 31.NVA.PS

Northing: 486117.745 Meters

Easting: 1438216.234 Meters

Orthometric Height: 8.538 Meters

Latitude: 26° 27' 01.56216" N

Longitude: 81° 38' 09.89284" W

Ellipsoid Height: -15.751 Meters

36.NVA.PS



Point ID: 36.NVA.PS

Northing: 457687.548 Meters

Easting: 1472223.292 Meters

Orthometric Height: 3.829 Meters

Latitude: 26° 08' 51.57355" N

Longitude: 81° 20' 42.70186" W

Ellipsoid Height: -20.402 Meters

39.NVA.PS



Point ID: 39.NVA.PS

Northing: 431697.243 Meters

Easting: 1474180.317 Meters

Orthometric Height: 0.996 Meters

Latitude: 25° 54' 39.66250" N

Longitude: 81° 21' 55.96802" W

Ellipsoid Height: -22.795 Meters

61.NVA.PS



Point ID: 61.NVA.PS

Northing: 453607.469 Meters

Easting: 1450205.648 Meters

Orthometric Height: 2.946 Meters

Latitude: 26° 08' 29.41842" N

Longitude: 81° 34' 01.57073" W

Ellipsoid Height: -20.853 Meters

63.NVA.PS



Point ID: 63.NVA.PS

Northing: 446519.84 Meters

Easting: 1451338.696 Meters

Orthometric Height: 2.216 Meters

Latitude: 26° 04' 34.14439" N

Longitude: 81° 33' 59.86861" W

Ellipsoid Height: -21.467 Meters

67.NVA.PS



Point ID: 67.NVA.PS

Northing: 446319.093 Meters

Easting: 1460323.241 Meters

Orthometric Height: 2.078 Meters

Latitude: 26° 03' 42.94219" N

Longitude: 81° 28' 44.26643" W

Ellipsoid Height: -21.748 Meters

69.NVA.PS



Point ID: 69.NVA.PS

Northing: 452005.266 Meters

Easting: 1457687.854 Meters

Orthometric Height: 4.684 Meters

Latitude: 26° 07' 00.31593" N

Longitude: 81° 29' 46.32265" W

Ellipsoid Height: -19.186 Meters

70.NVA.PS



Point ID: 70.NVA.PS

Northing: 454742.889 Meters

Easting: 1457232.073 Meters

Orthometric Height: 3.045 Meters

Latitude: 26° 08' 31.27644" N

Longitude: 81° 29' 47.54658" W

Ellipsoid Height: -20.864 Meters

76.NVA.PS



Point ID: 76.NVA.PS

Northing: 479421.402 Meters

Easting: 1455533.032 Meters

Orthometric Height: 6.203 Meters

Latitude: 26° 21' 58.92369" N

Longitude: 81° 28' 33.38970" W

Ellipsoid Height: -18.093 Meters

78.NVA.PS2



Point ID: 78.NVA.PS2

Northing: 493615.703 Meters

Easting: 1452718.433 Meters

Orthometric Height: 10.778 Meters

Latitude: 26° 29' 52.36085" N

Longitude: 81° 28' 55.64072" W

Ellipsoid Height: -13.63 Meters

80.NVA.PS



Point ID: 80.NVA.PS

Northing: 497268.666 Meters

Easting: 1434882.494 Meters

Orthometric Height: 8.55 Meters

Latitude: 26° 33' 18.91397" N

Longitude: 81° 39' 07.86986" W

Ellipsoid Height: -15.847 Meters

98.NVA.PS



Point ID: 98.NVA.PS

Northing: 447506.09 Meters

Easting: 1443432.881 Meters

Orthometric Height: 2.521 Meters

Latitude: 26° 05' 45.21335" N

Longitude: 81° 38' 33.31659" W

Ellipsoid Height: -21.069 Meters

Vegetated Vertical Accuracy Checkpoints Low Vegetation

The Map shows the overall distribution of the Vegetated Vertical Accuracy Checkpoint, Low Vegetation throughout the AOI. The following tables contain a list of the control using Easting, Northing, and Orthometric height. The coordinate system displayed is Albers Equal Area, North American Datum 1983 (2011), North American Vertical Datum of 1988, Geoid12B and using Meters for measurement.

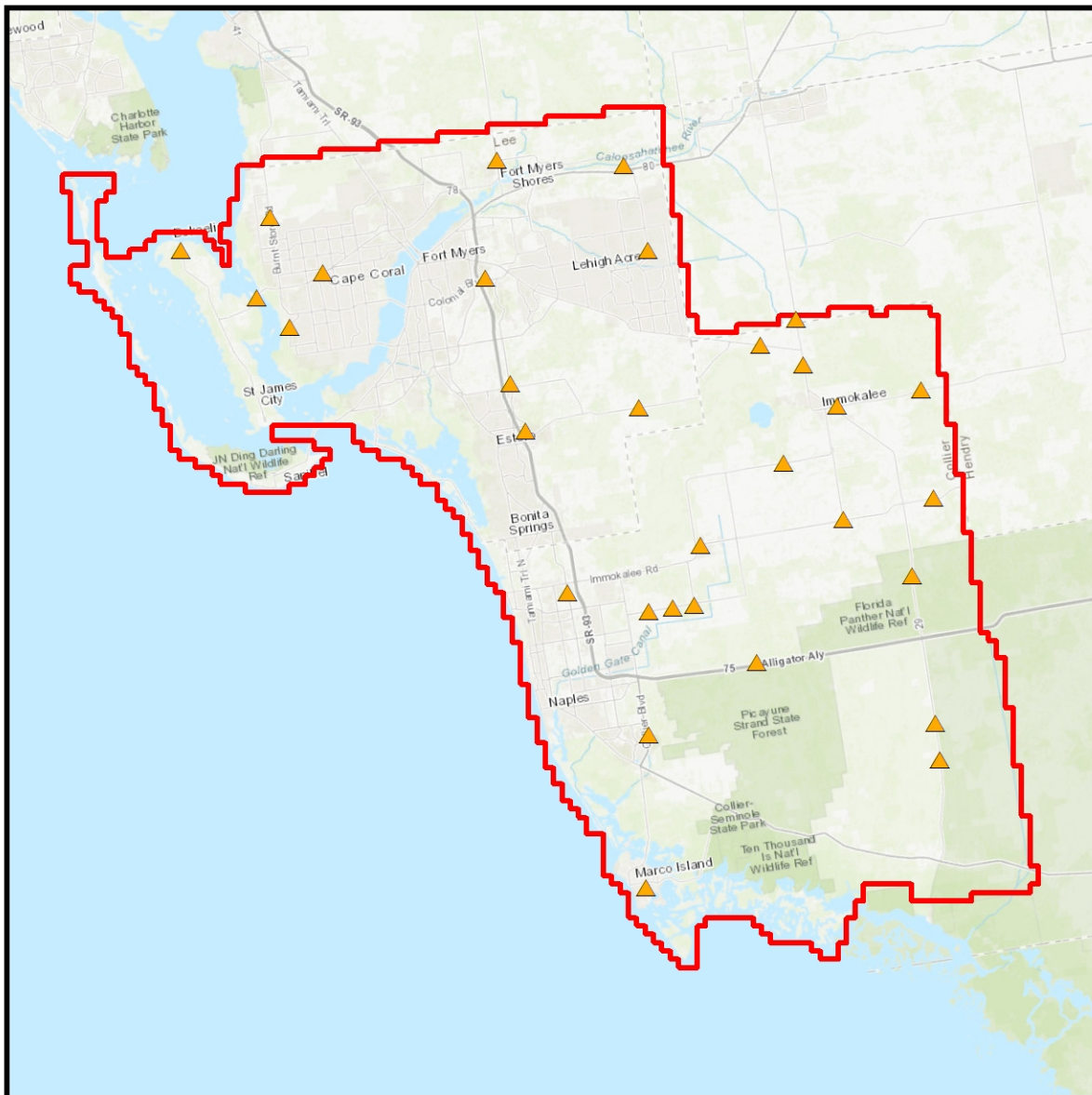


TABLE: Low Vegetation

Point ID	Easting	Northing	Ortho
1.VVA.LV	1461989.621	486358.649	9.84
11.VVA.LV	1421156.138	515784.967	4.255
14.VVA.LV	1400177.11	502323.799	4.498
15.VVA.LV	1392250.45	499259.212	0.799
16.VVA.LV	1383116.325	504916.34	1.367
18.VVA.LV	1393892.386	508961.323	2.118
19.VVA.LV	1396216.293	495753.72	1.326
2.VVA.LV	1472096.098	488220.866	7.768
201.VVA.LV	1439066.399	428551.407	2.571
21.VVA.LV	1419718.479	501651.689	6.445
23.VVA.LV	1422695.44	489005.699	7.005
24.VVA.LV	1424550.289	483265.477	5.455
26.VVA.LV	1429619.957	463856.916	3.956
3.VVA.LV	1457039.188	496752.176	10.88
31.VVA.LV	1438204.685	486125.186	8.407
33.VVA.LV	1462683.324	472666.833	5.546
34.VVA.LV	1473560.957	475222.418	5.286
35.VVA.LV	1471029.384	465948.318	5.118
37.VVA.LV	1473776.061	448199.516	3.249
38.VVA.LV.1	1474320.884	443835.18	1.979
38.VVA.LV	1474324.488	443860.457	2.803
55.VVA.LV	1439390.29	461615.481	3.421
56.VVA.LV	1442280.117	462101.246	3.408
57.VVA.LV	1444769.35	462429.854	4.459
6.VVA.LV	1439277.44	505010.895	7.505
60.VVA.LV	1452295.036	455571.318	3.217
73.VVA.LV	1445540.414	469613.522	4.862
76.VVA.LV	1455521.086	479432.046	6.219
77.VVN.LV	1457953.793	491281.832	12.406
78.VVA.LV	1452740.227	493613.185	10.57
9.VVA.LV	1436390.025	515184.81	3.481
97.VVA.LV	1439405.597	446799.954	2.958

1.VVA.LV



Point ID: 1.VVA.LV

Northing: 486358.649 Meters

Easting: 1461989.621 Meters

Orthometric Height: 9.84 Meters

Latitude: 26° 25' 11.19091" N

Longitude: 81° 24' 07.09253" W

Ellipsoid Height: -14.566 Meters

11.VVA.LV



Point ID: 11.VVA.LV

Northing: 515784.967 Meters

Easting: 1421156.138 Meters

Orthometric Height: 4.255 Meters

Latitude: 26° 44' 25.35007" N

Longitude: 81° 45' 35.46706" W

Ellipsoid Height: -20.11 Meters

14.VVA.LV



Point ID: 14.VVA.LV

Northing: 502323.799 Meters

Easting: 1400177.11 Meters

Orthometric Height: 4.498 Meters

Latitude: 26° 38' 51.40453" N

Longitude: 81° 59' 12.29706" W

Ellipsoid Height: -19.434 Meters

15.VVA.LV



Point ID: 15.VVA.LV

Northing: 499259.212 Meters

Easting: 1392250.45 Meters

Orthometric Height: 0.799 Meters

Latitude: 26° 37' 50.19436" N

Longitude: 82° 04' 09.87436" W

Ellipsoid Height: -22.954 Meters

16.VVA.LV



Point ID: 16.VVA.LV
Northing: 504916.34 Meters
Easting: 1383116.325 Meters
Orthometric Height: 1.367 Meters
Latitude: 26° 41' 36.88059" N
Longitude: 82° 09' 04.75781" W
Ellipsoid Height: -22.339 Meters

18.VVA.LV



Point ID: 18.VVA.LV

Northing: 508961.323 Meters

Easting: 1393892.386 Meters

Orthometric Height: 2.118 Meters

Latitude: 26° 42' 56.41382" N

Longitude: 82° 02' 20.60363" W

Ellipsoid Height: -21.744 Meters

19.VVA.LV



Point ID: 19.VVA.LV

Northing: 495753.72 Meters

Easting: 1396216.293 Meters

Orthometric Height: 1.326 Meters

Latitude: 26° 35' 37.71277" N

Longitude: 82° 02' 07.48809" W

Ellipsoid Height: -22.464 Meters

2.VVA.LV



Point ID: 2.VVA.LV

Northing: 488220.866 Meters

Easting: 1472096.098 Meters

Orthometric Height: 7.768 Meters

Latitude: 26° 25' 20.63593" N

Longitude: 81° 17' 59.27828" W

Ellipsoid Height: -16.74 Meters

201.VVA.LV

**NO IMAGE
AVAILABLE**

Point ID: 201.VVA.LV

Northing: 428551.407 Meters

Easting: 1439066.399 Meters

Orthometric Height: 2.571 Meters

Latitude: 25° 55' 52.24394" N

Longitude: 81° 42' 48.58631" W

Ellipsoid Height: -20.618 Meters

21.VVA.LV



Point ID: 21.VVA.LV

Northing: 501651.689 Meters

Easting: 1419718.479 Meters

Orthometric Height: 6.445 Meters

Latitude: 26° 36' 55.04846" N

Longitude: 81° 47' 42.19451" W

Ellipsoid Height: -17.852 Meters

23.VVA.LV



Point ID: 23.VVA.LV

Northing: 489005.699 Meters

Easting: 1422695.44 Meters

Orthometric Height: 7.005 Meters

Latitude: 26° 29' 51.18371" N

Longitude: 81° 47' 04.18730" W

Ellipsoid Height: -17.199 Meters

24.VVA.LV



Point ID: 24.VVA.LV

Northing: 483265.477 Meters

Easting: 1424550.289 Meters

Orthometric Height: 5.455 Meters

Latitude: 26° 26' 36.27525" N

Longitude: 81° 46' 29.13597" W

Ellipsoid Height: -18.692 Meters

26.VVA.LV



Point ID: 26.VVA.LV

Northing: 463856.916 Meters

Easting: 1429619.957 Meters

Orthometric Height: 3.956 Meters

Latitude: 26° 15' 42.88289" N

Longitude: 81° 45' 13.41691" W

Ellipsoid Height: -19.845 Meters

3.VVA.LV



Point ID: 3.VVA.LV

Northing: 496752.176 Meters

Easting: 1457039.188 Meters

Orthometric Height: 10.88 Meters

Latitude: 26° 31' 12.28697" N

Longitude: 81° 26' 05.45235" W

Ellipsoid Height: -13.552 Meters

31.VVA.LV



Point ID: 31.VVA.LV

Northing: 486125.186 Meters

Easting: 1438204.685 Meters

Orthometric Height: 8.407 Meters

Latitude: 26° 27' 01.85997" N

Longitude: 81° 38' 10.26163" W

Ellipsoid Height: -15.883 Meters

33.VVA.LV



Point ID: 33.VVA.LV

Northing: 472666.833 Meters

Easting: 1462683.324 Meters

Orthometric Height: 5.546 Meters

Latitude: 26° 17' 44.52156" N

Longitude: 81° 24' 57.48415" W

Ellipsoid Height: -18.74 Meters

34.VVA.LV



Point ID: 34.VVA.LV

Northing: 475222.418 Meters

Easting: 1473560.957 Meters

Orthometric Height: 5.286 Meters

Latitude: 26° 18' 12.57429" N

Longitude: 81° 18' 19.13372" W

Ellipsoid Height: -19.18 Meters

35.VVA.LV



Point ID: 35.VVA.LV

Northing: 465948.318 Meters

Easting: 1471029.384 Meters

Orthometric Height: 5.118 Meters

Latitude: 26° 13' 25.09106" N

Longitude: 81° 20' 39.51931" W

Ellipsoid Height: -19.206 Meters

37.VVA.LV



Point ID: 37.VVA.LV

Northing: 448199.516 Meters

Easting: 1473776.061 Meters

Orthometric Height: 3.249 Meters

Latitude: 26° 03' 36.42802" N

Longitude: 81° 20' 39.95580" W

Ellipsoid Height: -20.875 Meters

38.VVA.LV.1



Point ID: 38.VVA.LV.1
Northing: 443835.18 Meters
Easting: 1474320.884 Meters
Orthometric Height: 1.979 Meters
Latitude: 26° 01' 12.29099" N
Longitude: 81° 20' 44.66132" W
Ellipsoid Height: -22.086 Meters

38.VVA.LV



Point ID: 38.VVA.LV

Northing: 443860.457 Meters

Easting: 1474324.488 Meters

Orthometric Height: 2.803 Meters

Latitude: 26° 01' 13.09184" N

Longitude: 81° 20' 44.39605" W

Ellipsoid Height: -21.262 Meters

55.VVA.LV



Point ID: 55.VVA.LV

Northing: 461615.481 Meters

Easting: 1439390.29 Meters

Orthometric Height: 3.421 Meters

Latitude: 26° 13' 42.30425" N

Longitude: 81° 39' 40.23297" W

Ellipsoid Height: -20.433 Meters

56.VVA.LV



Point ID: 56.VVA.LV

Northing: 462101.246 Meters

Easting: 1442280.117 Meters

Orthometric Height: 3.408 Meters

Latitude: 26° 13' 43.79273" N

Longitude: 81° 37' 55.55393" W

Ellipsoid Height: -20.487 Meters

57.VVA.LV



Point ID: 57.VVA.LV

Northing: 462429.854 Meters

Easting: 1444769.35 Meters

Orthometric Height: 4.459 Meters

Latitude: 26° 13' 42.14190" N

Longitude: 81° 36' 25.86909" W

Ellipsoid Height: -19.469 Meters

6.VVA.LV



Point ID: 6.VVA.LV

Northing: 505010.895 Meters

Easting: 1439277.44 Meters

Orthometric Height: 7.505 Meters

Latitude: 26° 37' 07.76143" N

Longitude: 81° 35' 50.15261" W

Ellipsoid Height: -16.956 Meters

60.VVA.LV



Point ID: 60.VVA.LV

Northing: 455571.318 Meters

Easting: 1452295.036 Meters

Orthometric Height: 3.217 Meters

Latitude: 26° 09' 22.67377" N

Longitude: 81° 32' 37.23893" W

Ellipsoid Height: -20.645 Meters

73.VVA.LV



Point ID: 73.VVA.LV

Northing: 469613.522 Meters

Easting: 1445540.414 Meters

Orthometric Height: 4.862 Meters

Latitude: 26° 17' 30.99840" N

Longitude: 81° 35' 19.86831" W

Ellipsoid Height: -19.211 Meters

76.VVA.LV



Point ID: 76.VVA.LV

Northing: 479432.046 Meters

Easting: 1455521.086 Meters

Orthometric Height: 6.219 Meters

Latitude: 26° 21' 59.32782" N

Longitude: 81° 28' 33.75423" W

Ellipsoid Height: -18.077 Meters

77.VVN.LV



Point ID: 77.VVN.LV

Northing: 491281.832 Meters

Easting: 1457953.793 Meters

Orthometric Height: 12.406 Meters

Latitude: 26° 28' 10.71007" N

Longitude: 81° 26' 02.98910" W

Ellipsoid Height: -12.003 Meters

78.VVA.LV



Point ID: 78.VVA.LV

Northing: 493613.185 Meters

Easting: 1452740.227 Meters

Orthometric Height: 10.57 Meters

Latitude: 26° 29' 52.17080" N

Longitude: 81° 28' 54.88252" W

Ellipsoid Height: -13.838 Meters

9.VVA.LV



Point ID: 9.VVA.LV

Northing: 515184.81 Meters

Easting: 1436390.025 Meters

Orthometric Height: 3.481 Meters

Latitude: 26° 42' 51.14156" N

Longitude: 81° 36' 37.51512" W

Ellipsoid Height: -20.996 Meters

97.VVA.LV



Point ID: 97.VVA.LV

Northing: 446799.954 Meters

Easting: 1439405.597 Meters

Orthometric Height: 2.958 Meters

Latitude: 26° 05' 42.16987" N

Longitude: 81° 40' 59.13157" W

Ellipsoid Height: -20.572 Meters

Vegetated Vertical Accuracy Checkpoints Medium Vegetation

The Map shows the overall distribution of the Vegetated Vertical Accuracy Checkpoint, Medium Vegetation throughout the AOI. The following tables contain a list of the control using Easting, Northing, and Orthometric height. The coordinate system displayed is Albers Equal Area, North American Datum 1983 (2011), North American Vertical Datum of 1988, Geoid12B and using Meters for measurement.

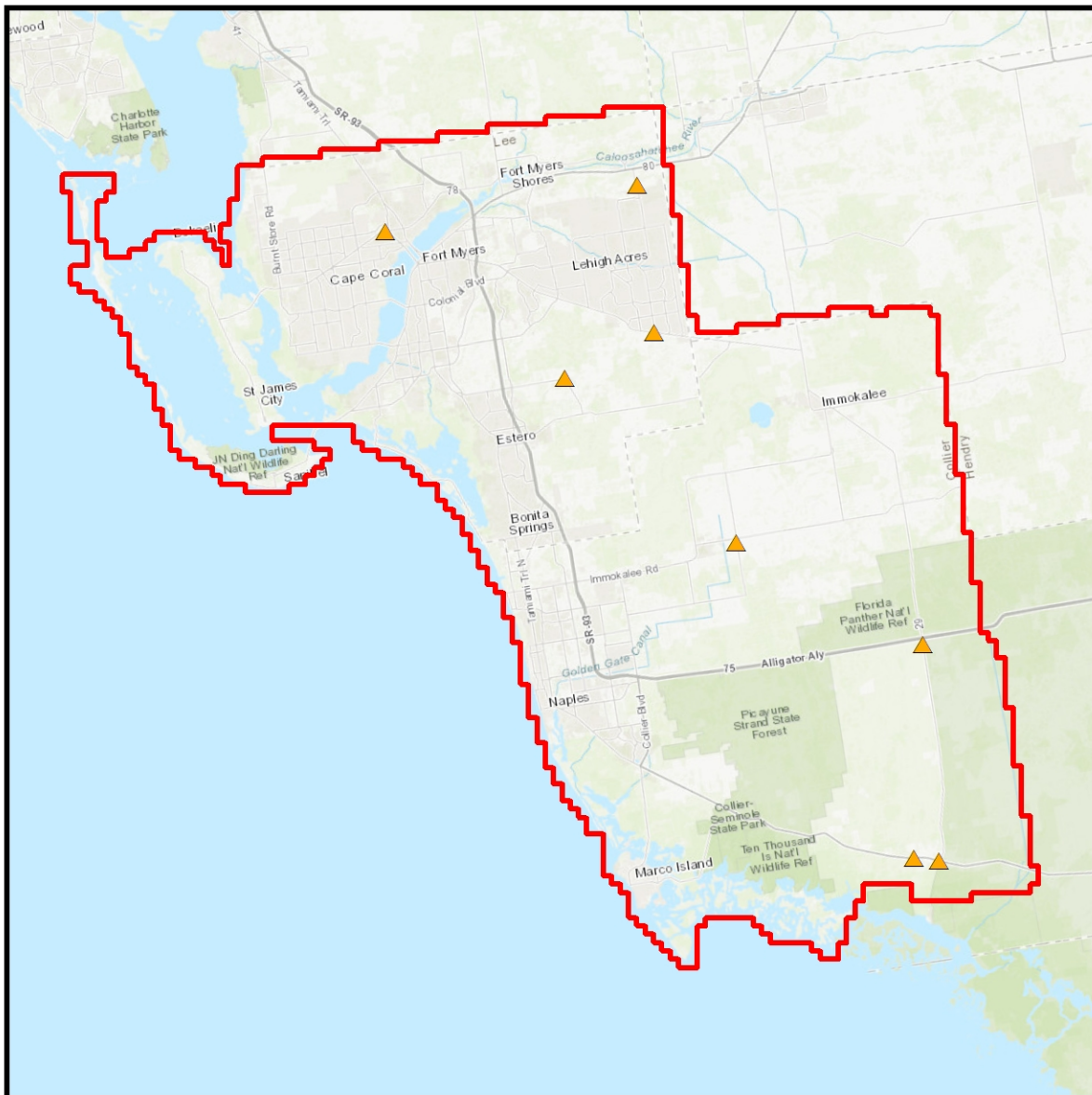


TABLE: Medium Vegetation

Point ID	Easting	Northing	Ortho
13.VVA.MV	1407739.751	507193.867	2.691
30.VVA.MV	1429240.817	489590.499	8.314
36.VVA.MV	1472227.213	457668.205	3.824
39.VVA.MV	1474154.166	431672.659	0.801
5.VVA.MV	1440024.48	495148.498	8.635
74.VVA.MV	1449865.125	469931.411	4.583
8.VVA.MV	1437930.162	512757.345	5.558
92.VVA.MV	1471205.363	432076.697	0.025

13.VVA.MV



Point ID: 13.VVA.MV

Northing: 507193.867 Meters

Easting: 1407739.751 Meters

Orthometric Height: 2.691 Meters

Latitude: 26° 40' 52.56913" N

Longitude: 81° 54' 17.95038" W

Ellipsoid Height: -21.44 Meters

30.VVA.MV



Point ID: 30.VVA.MV

Northing: 489590.499 Meters

Easting: 1429240.817 Meters

Orthometric Height: 8.314 Meters

Latitude: 26° 29' 38.10620" N

Longitude: 81° 43' 09.12639" W

Ellipsoid Height: -15.966 Meters

36.VVA.MV



Point ID: 36.VVA.MV

Northing: 457668.205 Meters

Easting: 1472227.213 Meters

Orthometric Height: 3.824 Meters

Latitude: 26° 08' 50.92737" N

Longitude: 81° 20' 42.66961" W

Ellipsoid Height: -20.406 Meters

39.VVA.MV



Point ID: 39.VVA.MV

Northing: 431672.659 Meters

Easting: 1474154.166 Meters

Orthometric Height: 0.801 Meters

Latitude: 25° 54' 38.99724" N

Longitude: 81° 21' 57.02210" W

Ellipsoid Height: -22.989 Meters

5.VVA.MV



Point ID: 5.VVA.MV

Northing: 495148.498 Meters

Easting: 1440024.48 Meters

Orthometric Height: 8.635 Meters

Latitude: 26° 31' 44.94040" N

Longitude: 81° 36' 17.05814" W

Ellipsoid Height: -15.765 Meters

74.VVA.MV



Point ID: 74.VVA.MV

Northing: 469931.411 Meters

Easting: 1449865.125 Meters

Orthometric Height: 4.583 Meters

Latitude: 26° 17' 19.85830" N

Longitude: 81° 32' 45.31252" W

Ellipsoid Height: -19.534 Meters

8.VVA.MV



Point ID: 8.VVA.MV

Northing: 512757.345 Meters

Easting: 1437930.162 Meters

Orthometric Height: 5.558 Meters

Latitude: 26° 41' 25.01801" N

Longitude: 81° 35' 55.98235" W

Ellipsoid Height: -18.921 Meters

92.VVA.MV



Point ID: 92.VVA.MV

Northing: 432076.697 Meters

Easting: 1471205.363 Meters

Orthometric Height: 0.025 Meters

Latitude: 25° 55' 06.91365" N

Longitude: 81° 23' 38.55063" W

Ellipsoid Height: -23.72 Meters

Vegetated Vertical Accuracy Checkpoints High Vegetation

The Map shows the overall distribution of the Vegetated Vertical Accuracy Checkpoint, High Vegetation throughout the AOI. The following tables contain a list of the control using Easting, Northing, and Orthometric height. The coordinate system displayed is Albers Equal Area, North American Datum 1983 (2011), North American Vertical Datum of 1988, Geoid12B and using Meters for measurement.

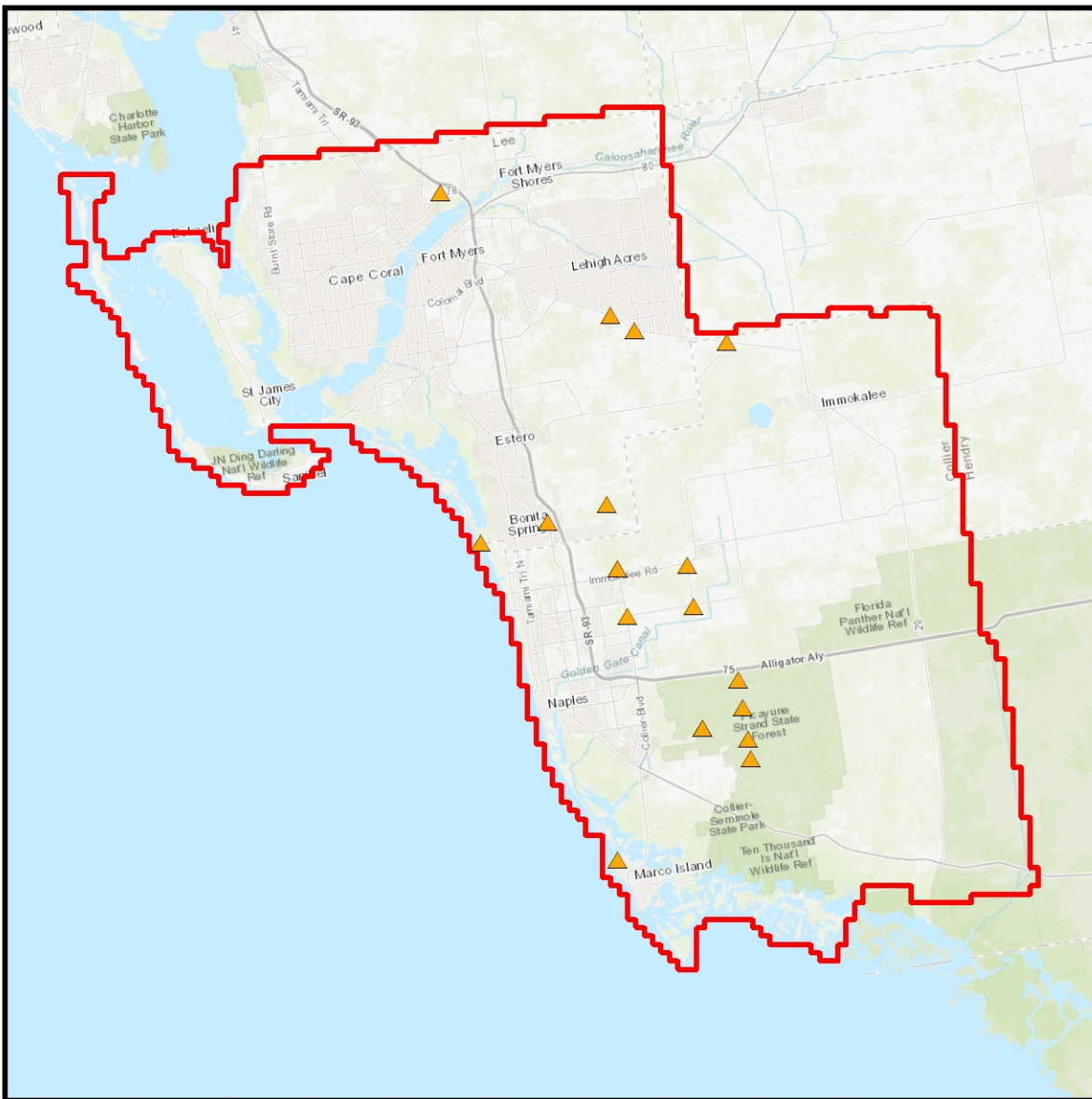


TABLE: High Vegetation

Point ID	Easting	Northing	Ortho
100.VVA.HV	1445894.078	447838.801	2.191
100.VVA.HV2	1445894.096	447838.797	2.198
100.VVA.HV3	1445894.101	447838.798	2.183
12.VVA.HV	1414440.172	511936.88	3.465
200.VVA.HV	1435657.224	432085.914	1.327
25.VVA.HV	1427377.968	472452.107	3.305
28.VVA.HV	1435697.227	466877.73	4.052
28.VVA.HW	1435697.22	466877.725	4.039
29.VVA.HV	1434403.579	474648.157	4.488
4.VVA.HV	1448790.851	494078.144	8.251
54.VVA.HV	1436863.941	461246.973	3.542
57.VVA.HV	1444776.364	462407.648	4.314
61.VVA.HV	1450207.298	453594.172	2.699
62.VVA.HV	1450699.123	450230.272	2.375
63.VVA.HV	1451329.718	446515.992	2.291
64.VVA.HV	1451722.111	444158.606	1.762
72.VVA.HV	1444021.646	467353.458	4.285
79.VVA.HV	1437720.137	495449.829	9.072
80.VVA.HV	1434900.599	497274.178	9.135
87.VVA.HV	1419325.136	470029.394	1.738

100.VVA.HV

**NO IMAGE
AVAILABLE**

Point ID: 100.VVA.HV
Northing: 447838.801 Meters
Easting: 1445894.078 Meters
Orthometric Height: 2.191 Meters
Latitude: 26° 05' 43.84245" N
Longitude: 81° 37' 04.73473" W
Ellipsoid Height: -21.439 Meters

100.VVA.HV2

**NO IMAGE
AVAILABLE**

Point ID: 100.VVA.HV2

Northing: 447838.797 Meters

Easting: 1445894.096 Meters

Orthometric Height: 2.198 Meters

Latitude: 26° 05' 43.84221" N

Longitude: 81° 37' 04.73411" W

Ellipsoid Height: -21.432 Meters

100.VVA.HV3



Point ID: 100.VVA.HV3
Northing: 447838.798 Meters
Easting: 1445894.101 Meters
Orthometric Height: 2.183 Meters
Latitude: 26° 05' 43.84224" N
Longitude: 81° 37' 04.73391" W
Ellipsoid Height: -21.447 Meters

12.VVA.HV



Point ID: 12.VVA.HV

Northing: 511936.88 Meters

Easting: 1414440.172 Meters

Orthometric Height: 3.465 Meters

Latitude: 26° 42' 53.57138" N

Longitude: 81° 49' 54.68627" W

Ellipsoid Height: -20.801 Meters

200.VVA.HV

**NO IMAGE
AVAILABLE**

Point ID: 200.VVA.HV
Northing: 432085.914 Meters
Easting: 1435657.224 Meters
Orthometric Height: 1.327 Meters
Latitude: 25° 58' 03.58439" N
Longitude: 81° 44' 29.79560" W
Ellipsoid Height: -21.884 Meters

25.VVA.HV



Point ID: 25.VVA.HV
Northing: 472452.107 Meters
Easting: 1427377.968 Meters
Orthometric Height: 3.305 Meters
Latitude: 26° 20' 32.27233" N
Longitude: 81° 45' 46.79941" W
Ellipsoid Height: -20.664 Meters

28.VVA.HV

**NO IMAGE
AVAILABLE**

Point ID: 28.VVA.HV

Northing: 466877.73 Meters

Easting: 1435697.227 Meters

Orthometric Height: 4.052 Meters

Latitude: 26° 16' 50.93633" N

Longitude: 81° 41' 22.47657" W

Ellipsoid Height: -19.871 Meters

28.VVA.HW



Point ID: 28.VVA.HW

Northing: 466877.725 Meters

Easting: 1435697.22 Meters

Orthometric Height: 4.039 Meters

Latitude: 26° 16' 50.93618" N

Longitude: 81° 41' 22.47681" W

Ellipsoid Height: -19.885 Meters

29.VVA.HV



Point ID: 29.VVA.HV

Northing: 474648.157 Meters

Easting: 1434403.579 Meters

Orthometric Height: 4.488 Meters

Latitude: 26° 21' 08.96212" N

Longitude: 81° 41' 26.53113" W

Ellipsoid Height: -19.579 Meters

4.VVA.HV



Point ID: 4.VVA.HV

Northing: 494078.144 Meters

Easting: 1448790.851 Meters

Orthometric Height: 8.251 Meters

Latitude: 26° 30' 26.86800" N

Longitude: 81° 31' 12.24808" W

Ellipsoid Height: -16.156 Meters

54.VVA.HV



Point ID: 54.VVA.HV

Northing: 461246.973 Meters

Easting: 1436863.941 Meters

Orthometric Height: 3.542 Meters

Latitude: 26° 13' 42.79820" N

Longitude: 81° 41' 11.44376" W

Ellipsoid Height: -20.275 Meters

57.VVA.HV



Point ID: 57.VVA.HV

Northing: 462407.648 Meters

Easting: 1444776.364 Meters

Orthometric Height: 4.314 Meters

Latitude: 26° 13' 41.38795" N

Longitude: 81° 36' 25.74107" W

Ellipsoid Height: -19.614 Meters

61.VVA.HV



Point ID: 61.VVA.HV

Northing: 453594.172 Meters

Easting: 1450207.298 Meters

Orthometric Height: 2.699 Meters

Latitude: 26° 08' 28.97945" N

Longitude: 81° 34' 01.58432" W

Ellipsoid Height: -21.099 Meters

62.VVA.HV



Point ID: 62.VVA.HV

Northing: 450230.272 Meters

Easting: 1450699.123 Meters

Orthometric Height: 2.375 Meters

Latitude: 26° 06' 37.54839" N

Longitude: 81° 34' 02.39625" W

Ellipsoid Height: -21.366 Meters

63.VVA.HV



Point ID: 63.VVA.HV

Northing: 446515.992 Meters

Easting: 1451329.718 Meters

Orthometric Height: 2.291 Meters

Latitude: 26° 04' 34.06424" N

Longitude: 81° 34' 00.20589" W

Ellipsoid Height: -21.392 Meters

64.VVA.HV



Point ID: 64.VVA.HV

Northing: 444158.606 Meters

Easting: 1451722.111 Meters

Orthometric Height: 1.762 Meters

Latitude: 26° 03' 15.72316" N

Longitude: 81° 33' 59.09274" W

Ellipsoid Height: -21.886 Meters

72.VVA.HV



Point ID: 72.VVA.HV

Northing: 467353.458 Meters

Easting: 1444021.646 Meters

Orthometric Height: 4.285 Meters

Latitude: 26° 16' 25.31456" N

Longitude: 81° 36' 25.73723" W

Ellipsoid Height: -19.732 Meters

79.VVA.HV



Point ID: 79.VVA.HV

Northing: 495449.829 Meters

Easting: 1437720.137 Meters

Orthometric Height: 9.072 Meters

Latitude: 26° 32' 06.06709" N

Longitude: 81° 37' 37.09837" W

Ellipsoid Height: -15.322 Meters

80.VVA.HV



Point ID: 80.VVA.HV

Northing: 497274.178 Meters

Easting: 1434900.599 Meters

Orthometric Height: 9.135 Meters

Latitude: 26° 33' 19.00323" N

Longitude: 81° 39' 07.19825" W

Ellipsoid Height: -15.262 Meters

87.VVA.HV



Point ID: 87.VVA.HV

Northing: 470029.394 Meters

Easting: 1419325.136 Meters

Orthometric Height: 1.738 Meters

Latitude: 26° 19' 53.05259" N

Longitude: 81° 50' 44.54538" W

Ellipsoid Height: -22.112 Meters