

# Classified Point Cloud

## Deliverable 1 Summary

✓	<b>General</b>		
	Folder:	F:\USGS_GA_17_Counties_LiDAR\Georgia_East\point_cloud\tilecls	
	Total # of Files:	1,446	(All Valid)
	Total File Size:	599.4 GB	(643,645,300,224 bytes)

✓	<b>Tile Sizes</b>		
	Median Tile Size:	5,000' x 5,000'	
	Minimum Tile Size:	4,870' x 4,032'	
	Maximum Tile Size:	5,000' x 5,000'	
	X Range:	605000.00' to 849999.99'	
	Y Range:	945000.00' to 1199999.99'	
	Elevation Range:	-761.01' to 1841.85'	

✓	<b>LAS Version And Point Record Formats</b>		
	v1.4, Point Record Format 6	1,446 of 1,446 Tiles	

✓	<b>Spatial Reference System</b>		
	Horizontal Projection	NAD83(2011) / Georgia East (ftUS)	1,446 of 1,446 Tiles
	Horizontal Datum	NAD83 (National Spatial Reference System 2011)	1,446 of 1,446 Tiles
	Horizontal Units	US survey foot	1,446 of 1,446 Tiles
	Vertical Datum	NAVD88 height (ftUS)	1,446 of 1,446 Tiles
	Vertical Units	US survey foot	1,446 of 1,446 Tiles
	Storage Method	WKT	1,446 of 1,446 Tiles

✓	<b>GPS Time Type</b>		
	Adjusted	1,446 of 1,446 Tiles	

✓	<b>File Source ID Equals 0</b>		
	Yes	1,446 of 1,446 Tiles	

✓	<b>VLR/EVLR Reserved Equals 0</b>		
	Yes	1,446 of 1,446 Records	

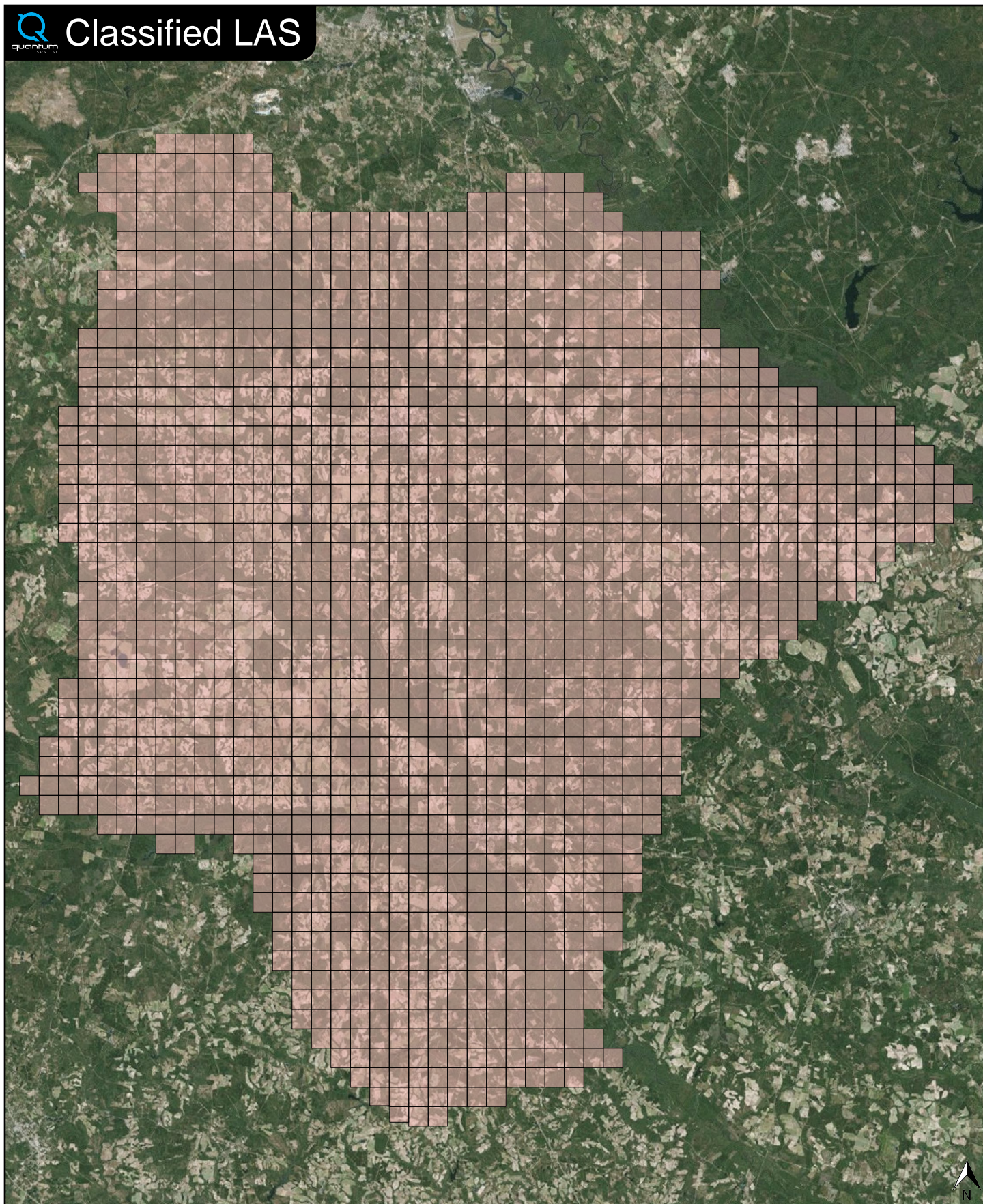
✓	<b>Unnecessary Bytes At End Of File</b>		
	No	1,446 of 1,446 Tiles	

✓	<b>Legacy Point Count Check</b>		
	Zero	1,446 of 1,446 Tiles	

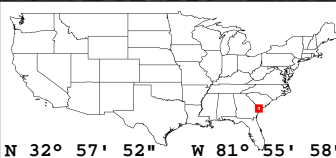
✓	<b>System Identifier</b>		
	Quantum Spatial	1,446 of 1,446 Tiles	

✓	<b>Generating Software</b>		
	LiDAR Suite	1,446 of 1,446 Tiles	





Classified LAS Tiles (1,446)





# Raw LAS Flight Line Strips

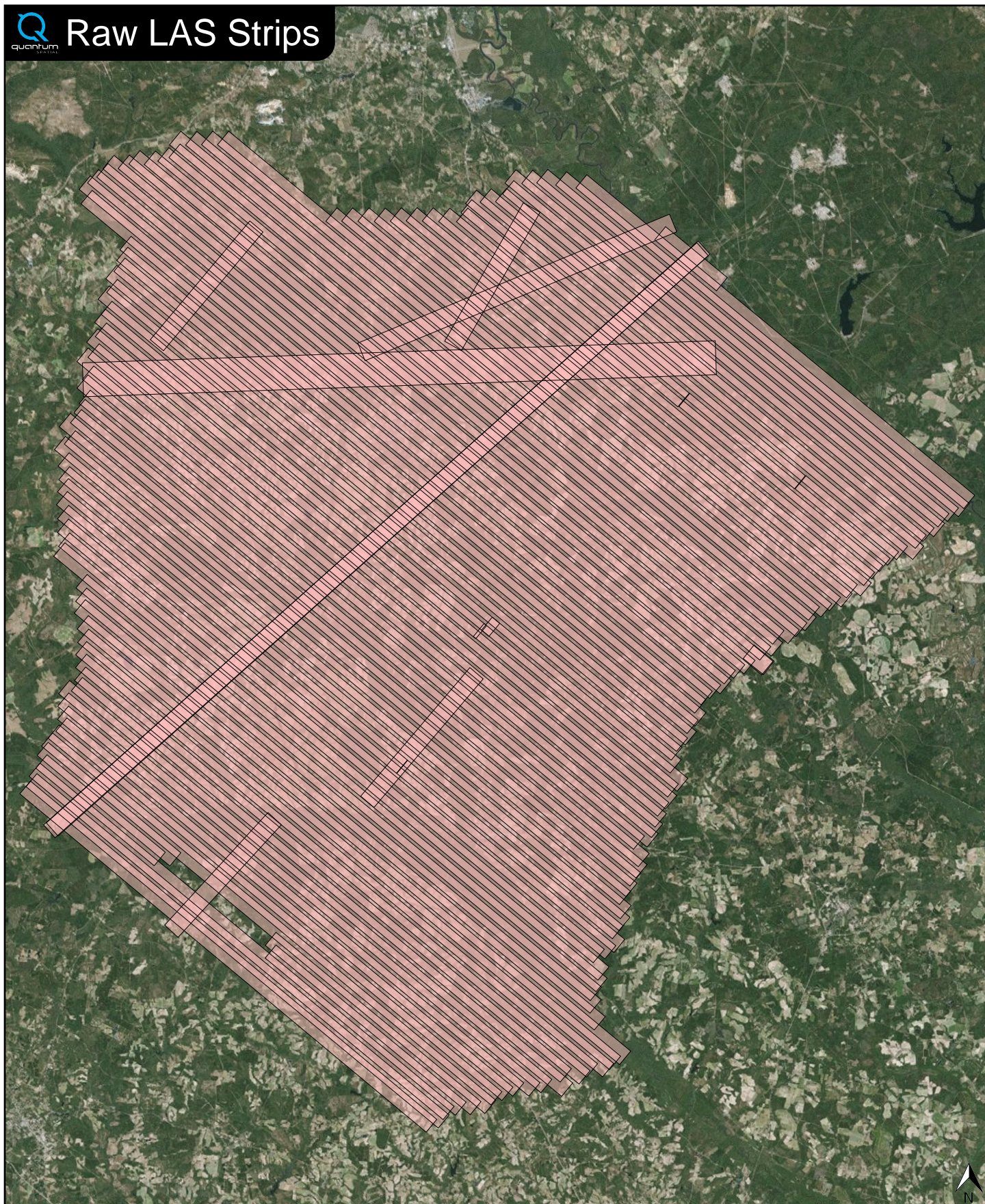
## Deliverable 2 Summary

✓	<b>General</b>	
	Folder:	F:\USGS_GA_17_Counties_LiDAR\Georgia_East\point_cloud\swathuncles
	Total # of Files:	98 (All Valid)
	Total File Size:	638.1 GB (685,191,506,914 bytes)
✓	<b>Raw LAS Strips</b>	
	Elevation Range:	-761' to 1842'
	Total FL Length:	2,852 miles
	Avg FL Length:	29 miles
	Min FL Length:	1 miles (00147)
	Max FL Length:	43 miles (00902)
✓	<b>LAS Version And Point Record Formats</b>	
	v1.4, Point Record Format 6	98 of 98 Strips
✓	<b>Spatial Reference System</b>	
	Horizontal Projection	NAD83(2011) / Georgia East (ftUS) 98 of 98 Strips
	Horizontal Datum	NAD83 (National Spatial Reference System 2011) 98 of 98 Strips
	Horizontal Units	US survey foot 98 of 98 Strips
	Vertical Datum	NAVD88 height (ftUS) 98 of 98 Strips
	Vertical Units	US survey foot 98 of 98 Strips
	Storage Method	WKT 98 of 98 Strips
✓	<b>GPS Time Type</b>	
	Adjusted	98 of 98 Strips
✓	<b>File Source IDs</b>	
	Equals Zero:	None
	All Unique:	Yes
	FLs:	101 - 104, 106 - 113, 115 - 133, 135 - 145, 147 - 155, 157 - 182, 184 - 196, 901 - 908
✓	<b>VLR/EVLR Reserved Equals 0</b>	
	Yes	114 of 114 Records
✓	<b>Unnecessary Bytes At End Of File</b>	
	No	98 of 98 Strips
✓	<b>Legacy Point Count Check</b>	
	Zero	98 of 98 Strips
✓	<b>System Identifier</b>	
	Quantum Spatial	98 of 98 Strips
✓	<b>Generating Software</b>	
	LiDAR Suite	98 of 98 Strips

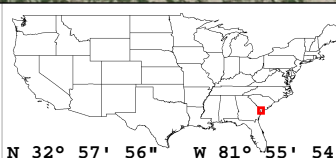




# Raw LAS Strips



FL Strips (98)



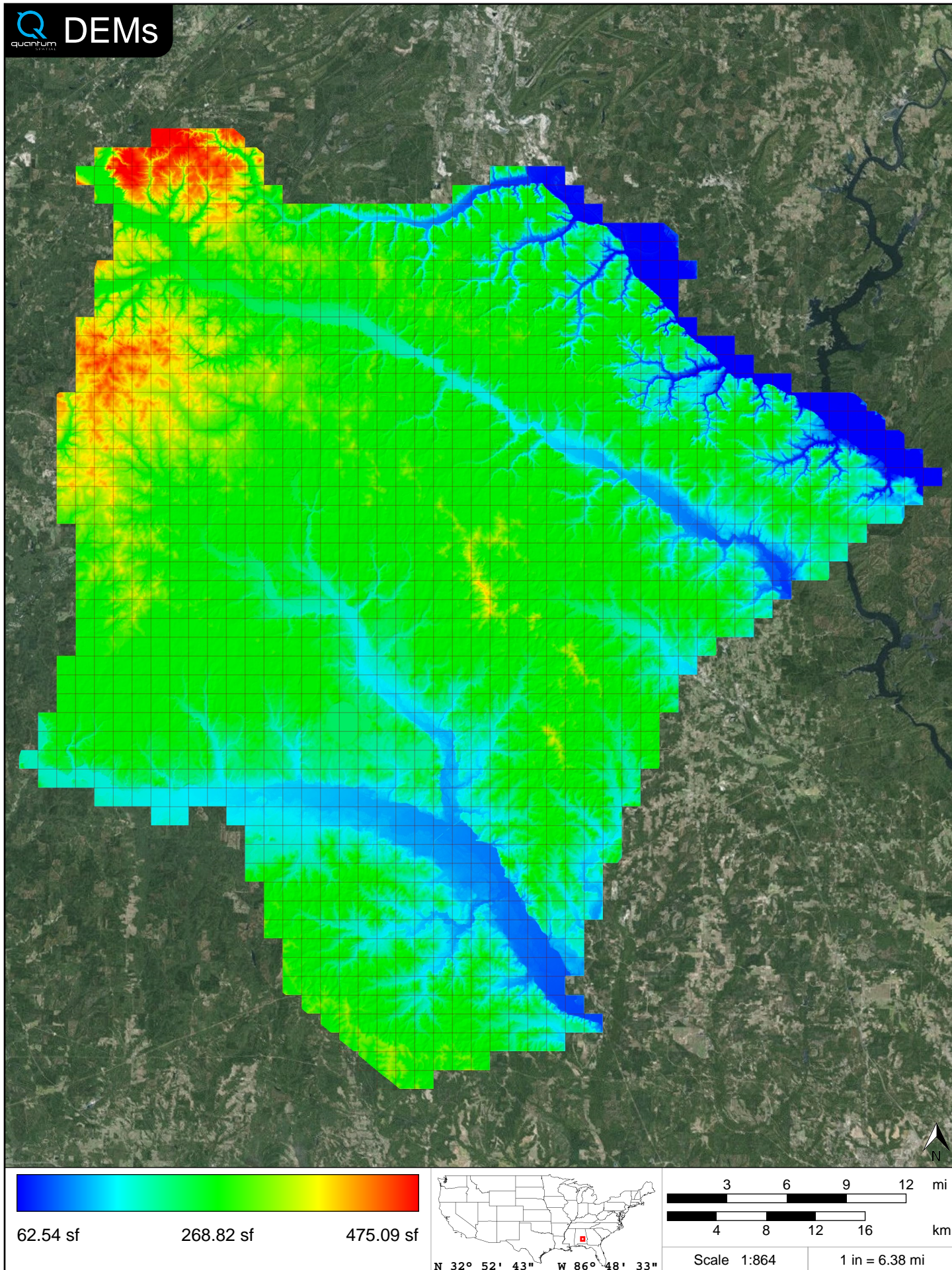


✓ General		
Folder:	F:\USGS_GA_17_Counties_LiDAR\Georgia_East\bare_earth\be_rasters	
Total # of Files:	1,446	(All Valid)
Total File Size:	35.3 GB	(37,950,376,962 bytes)

✓ Tile Sizes		
Median Tile Size:	5,000' x 5,000'	
Minimum Tile Size:	5,000' x 5,000'	
Maximum Tile Size:	5,000' x 5,000'	
X Range:	605000.00' to 850000.00'	
Y Range:	945000.00' to 1200000.00'	
Elevation Range:	0.20' to 477.05'	

✓ Spatial Reference System		
Horizontal Projection	NAD_1983_2011_StatePlane_Georgia_East_FIPS_1001_Ft_US	1,446 of 1,446 Tiles
Horizontal Datum	D_NAD_1983_2011	1,446 of 1,446 Tiles
Horizontal Units	Foot_US	1,446 of 1,446 Tiles
Vertical Datum	NAVD88 height (ftUS)	1,446 of 1,446 Tiles
Vertical Units	Foot_US	1,446 of 1,446 Tiles

✓ Raster		
File Type:	IMG	1,446 of 1,446
Bands:	1	1,446 of 1,446
Grid Size (pixels):	2500 x 2500	1,446 of 1,446
Pixel Resolution:	2.00000000' x 2.00000000'	1,446 of 1,446
Pixel Type:	32-bit Floating Point	1,446 of 1,446
Compression:	None	1,446 of 1,446
No Data Value:	-32767	1,446 of 1,446





✓ General		
Folder:	F:\USGS_GA_17_Counties_LiDAR\Georgia_East\other\Intensity_Images	
Total # of Files:	1,446	(All Valid)
Total File Size:	11.9 GB	(12,822,806,988 bytes)

✓ Tile Sizes		
Median Tile Size:	5,000' x 5,000'	
Minimum Tile Size:	5,000' x 5,000'	
Maximum Tile Size:	5,000' x 5,000'	
X Range:	605000.00' to 850000.00'	
Y Range:	945000.00' to 1200000.00'	

✓ Spatial Reference System		
Horizontal Projection	NAD_1983_2011_StatePlane_Georgia_East_FIPS_1001_Ft_US	1,446 of 1,446 Tiles
Horizontal Datum	NAD_1983_2011	1,446 of 1,446 Tiles
Horizontal Units	Foot_US	1,446 of 1,446 Tiles
Vertical Datum	NAVD88 height (ftUS)	1,446 of 1,446 Tiles
Vertical Units	Foot_US	1,446 of 1,446 Tiles

✓ Raster		
File Type:	TIF	1,446 of 1,446
Bands:	1	1,446 of 1,446
Grid Size (pixels):	2500 x 2500	1,446 of 1,446
Pixel Resolution:	2.00000000' x 2.00000000'	1,446 of 1,446
Pixel Type:	8-bit Unsigned Integer (MINISBLACK)	1,446 of 1,446
Compression:	NONE	1,446 of 1,446
No Data Value:	NONE	1,446 of 1,446



