

Raw LAS Flight Line Strips

Deliverable 1 Summary

✓ General		
Folder:	F:\Calibrated_FL_LAS_1point4	
Total # of Files:	41	(All Valid)
Total File Size:	172 GB	(184,944,396,598 bytes)
Elevation Range:	110' to 3388'	
Total FL Length:	1,024 miles	
Avg FL Length:	25 miles	
Total FL Length:	1,024 miles	

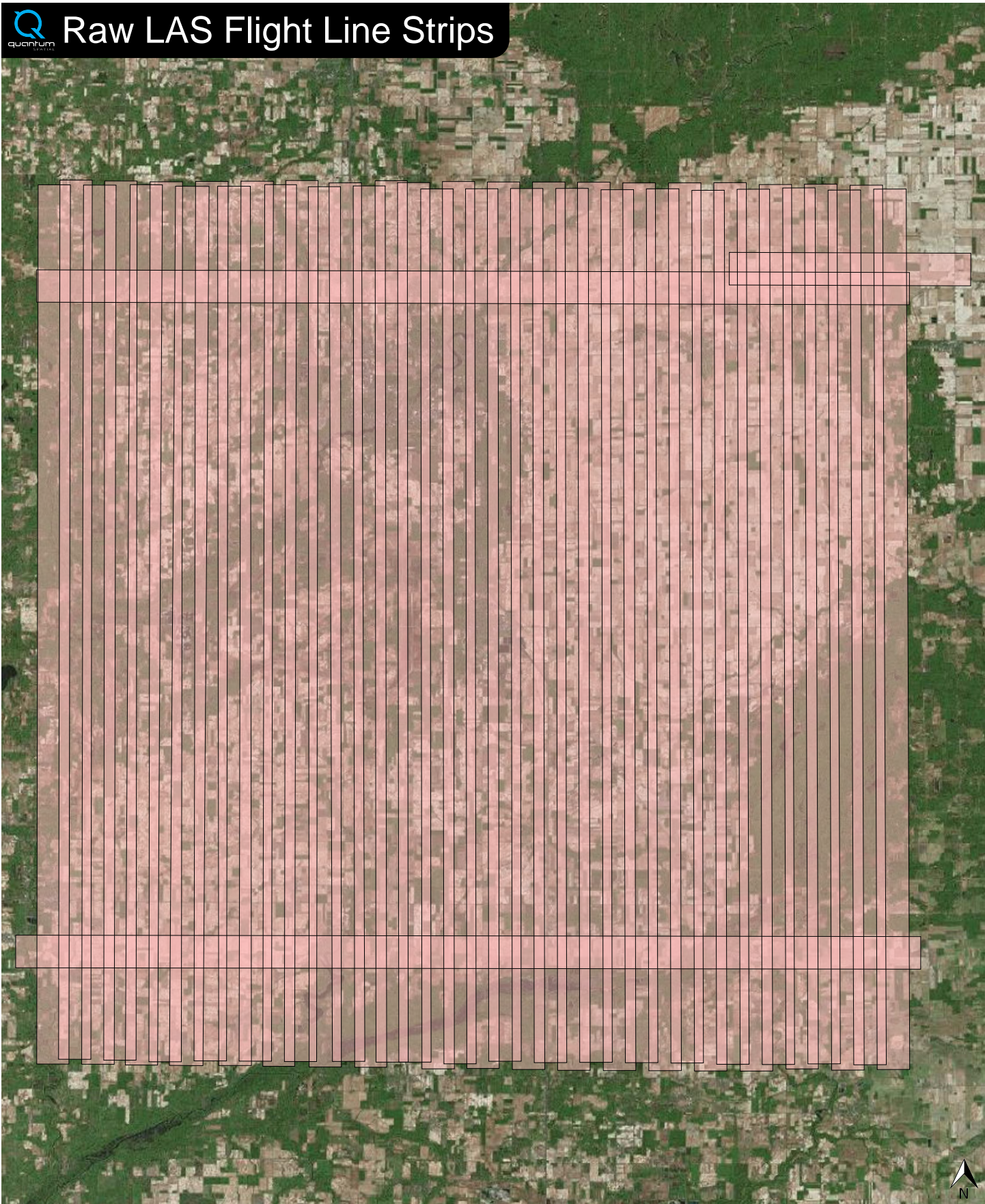
✓ LAS Version And Point Record Formats		
v1.4, Point Record Format 6		41 of 41 Tiles

✓ Spatial Reference System		
Horizontal	Michigan South SP, NAD83, International Feet	41 of 41 Tiles
Vertical	NAVD88 - Geoid12A (Intl Feet)	41 of 41 Tiles
Storage Method	WKT	41 of 41 Tiles

✓ GPS Time Type		
Adjusted		41 of 41 Tiles



Raw LAS Flight Line Strips



FL Strips (82)

