

1.1 Report on Multiple Discrete Returns (Tiled Data)

The USGS LiDAR Base Specification Version 1.0 requires: "Data collection must be capable of at least three returns per pulse. Full waveform collection is acceptable and welcomed; however, waveform data are regarded as supplemental information. Deriving and delivering multiple discrete returns is required in all cases."

The purpose of this section is to report on the presence and quantities of LiDAR returns in the LAS tiled data. Empty return columns can indicate a collection or processing problem dealing with LiDAR return attribute information.

[Classified Files - E:\Pope_Hardin\Classified_LAS](#)

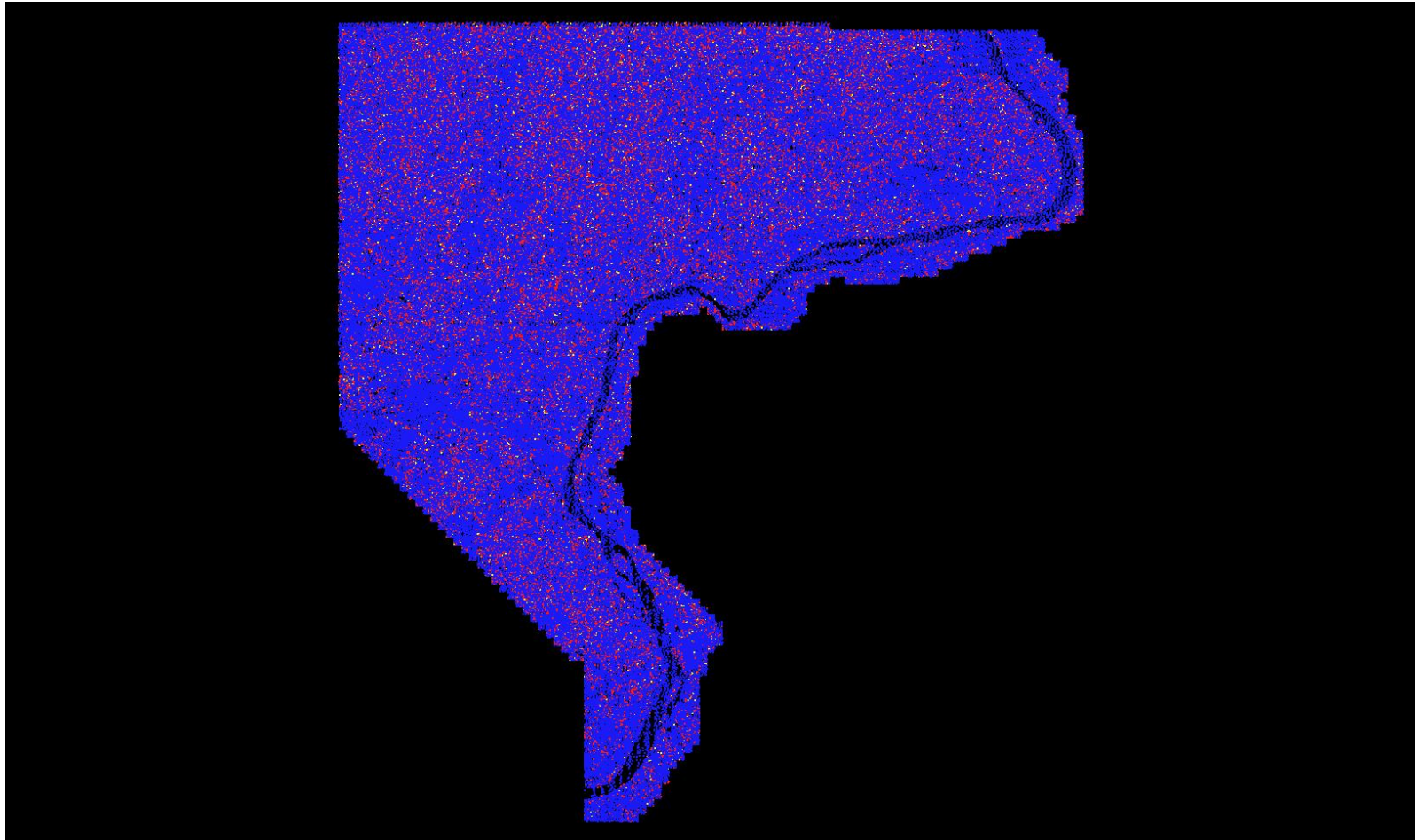
<u>File</u>	<u>First return</u>	<u>Second return</u>	<u>Third return</u>	<u>Other return</u>	<u>Total points</u>
Total	7,250,134,231	2,107,041,360	269,838,229	8,057,423	9,635,071,243

1.1 Report on Multiple Discrete Returns (Tiled Data) - All Returns

The purpose of this section is to show a graphic of LiDAR tiled data points colored by all returns. Blank tiles can indicate a collection or processing problem dealing with LiDAR return attribute information.

[Data Source - E:\Pope_Hardin\Classified_LAS](#)

[Result Path - E:\Pope_Hardin\QAQC2\1_1\ColorByReturns_Classified.jpg](#)



First Second Third Fourth or other