

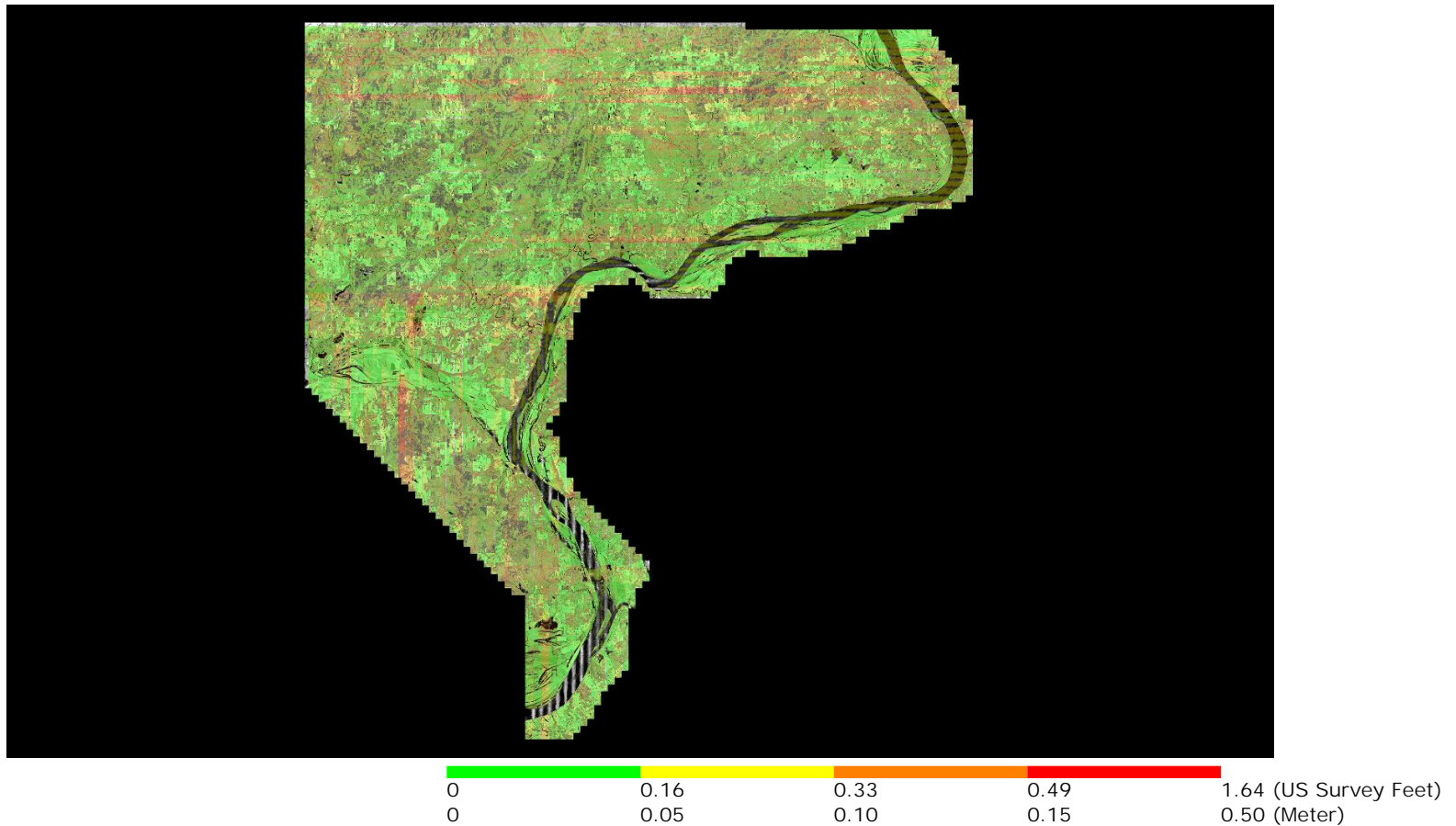
## 1.9.1 Report on Flight Line Separation (Relative Accuracy) per Project

The USGS LiDAR Base Specification Version 1.0 states that: "Relative accuracy within overlap between adjacent swaths:  $\leq 10$  cm RMSDz"

The purpose of this section is to show a graphic of the flight line separation raster for all of the data processed. This grid/image shows the vertical separation of flight lines by thematically coloring the separation magnitude on a color ramp based on absolute distance. This color thematic rendering is modulated by intensity to show land cover features. If there is no flight line overlap, the raster is displayed as grayscale intensity alone. The relative accuracy RMSDz is reported in the bottom left of this page.

[Data Source - E:\Pope\\_Hardin\Swath\\_LAS](#)

[E:\Pope\\_Hardin\QAQC2\1\\_9\\_1\Boresighted\\_FlightlineSeparation\\_SingleFile.jp2](#)



A maximum vertical separation cutoff has been applied to this graphic for the purpose of masking out disruptive features that do not show calibration issues between flight lines (e.g., trees, moving cars, etc.). This can be modified in the Color Options settings window.