

Classified Point Cloud

Deliverable 1 Summary

| | | |
|-----------------------------------------------|-------------------------------------------------------------------------------------------------------------|--------------|
| ✓ General | | |
| Folder: | P:\Projects\34337_ID_AdamsCounty_2019_B19\Deliveries\QA\183171\217237\ID_AdamsCo_2_2019\point_cloud\tilecls | |
| Total # of Files: | 2 (All Valid) | |
| Total File Size: | 1.7 GB (1,784,420,718 bytes) | |
| ✓ Tile Sizes | | |
| Median Tile Size: | 1,500m x 1,500m | |
| Minimum Tile Size: | 507m x 1,500m | |
| Maximum Tile Size: | 1,500m x 1,500m | |
| X Range: | 531000.00m to 561506.49m | |
| Y Range: | 4989000.00m to 5011499.99m | |
| Elevation Range (All Classes): | 1619.04m to 2375.62m | |
| ✓ LAS Version And Point Record Formats | | |
| v1.4, Point Record Format 6 | 2 of 2 Tiles | |
| ✓ Spatial Reference System | | |
| Horizontal Projection | NAD83(2011) / UTM zone 11N | 2 of 2 Tiles |
| Horizontal Datum | NAD83 (National Spatial Reference System 2011) | 2 of 2 Tiles |
| Horizontal Units | meter | 2 of 2 Tiles |
| Vertical Datum | NAVD88 height - Geoid12B (m) | 2 of 2 Tiles |
| Vertical Units | meter | 2 of 2 Tiles |
| Vertical USGS-Compliant | Yes | 2 of 2 Tiles |
| Geoid | Geoid12B | 2 of 2 Tiles |
| Storage Method | WKT | 2 of 2 Tiles |
| Matches OGC Template | Yes | 2 of 2 Tiles |
| ✓ GPS Time Type | | |
| Adjusted | 2 of 2 Tiles | |
| ✓ File Source ID Equals 0 | | |
| Yes | 2 of 2 Tiles | |
| ✓ VLR/EVLR Reserved Equals 0 | | |
| Yes | 8 of 8 Records | |
| ✓ Unnecessary Bytes At End Of File | | |
| No | 2 of 2 Tiles | |
| ✓ Legacy Point Count Check | | |
| Zero | 2 of 2 Tiles | |
| ✓ System Identifier | | |
| MERGE | 2 of 2 Tiles | |

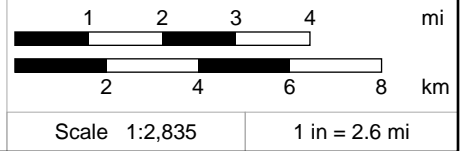
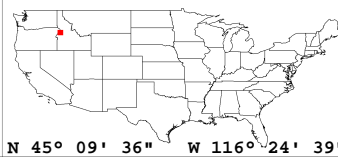
Classified Point Cloud Continued...

Deliverable 1 Summary

| |
|-----------------------------------------------------------------|
| ✓ Generating Software |
| QSI LiDAR Suite 2 of 2 Tiles |



Classified LAS Tiles (2)

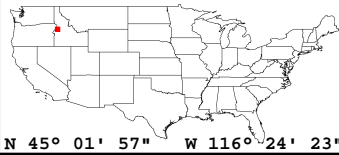
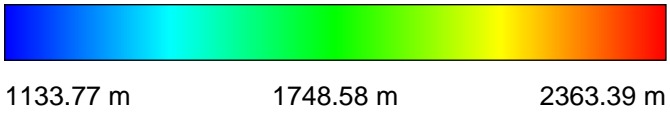
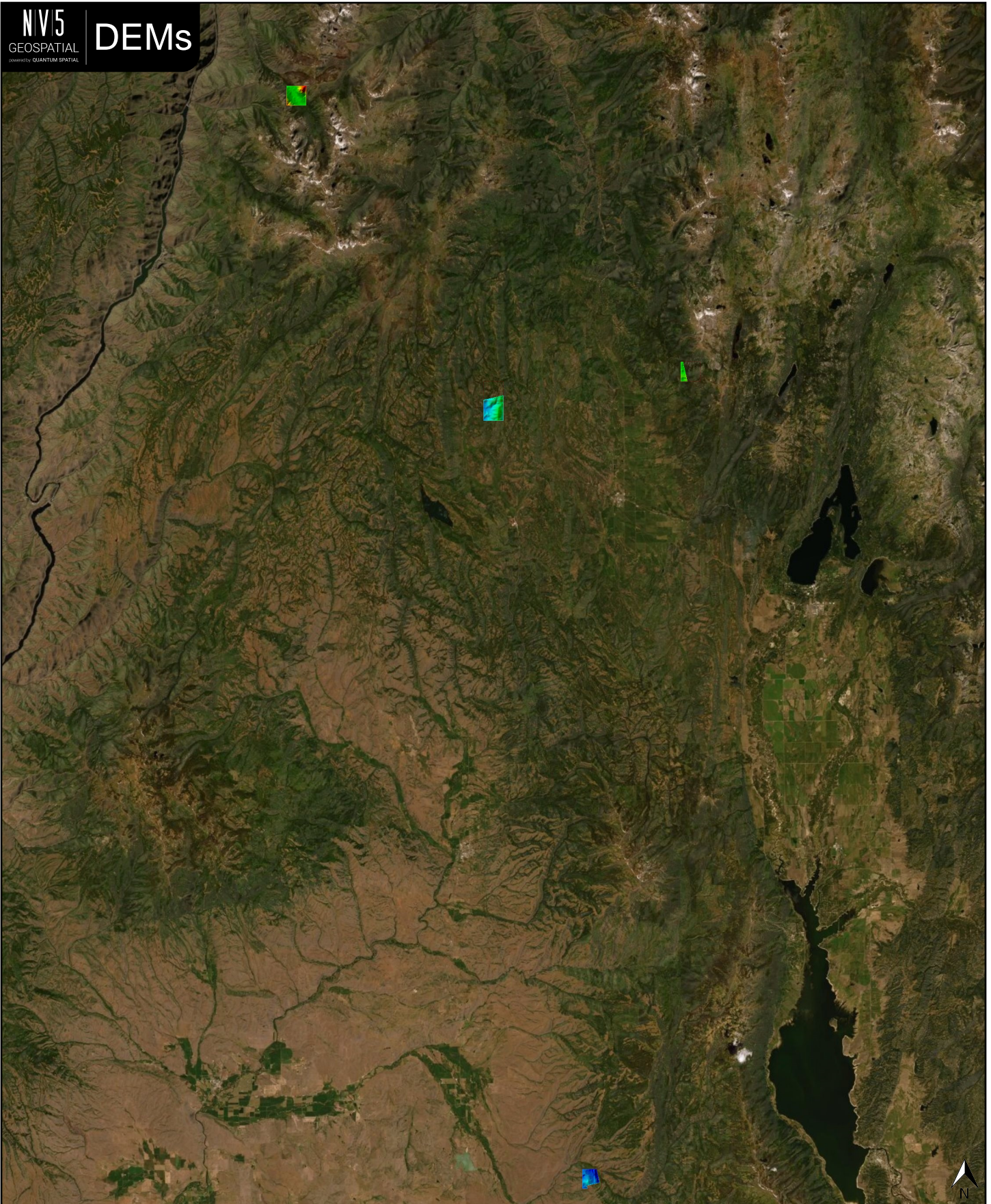


| ✓ General | |
|-------------------|---------------------------------------------------------------------------------------------------------------|
| Folder: | P:\Projects\34337_ID_AdamsCounty_2019_B19\Deliveries\QA\183171\217237\ID_AdamsCo_2_2019\bare_earth\be_rasters |
| Total # of Files: | 5 (All Valid) |
| Total File Size: | 45.0 MB (47,217,200 bytes) |

| ✓ Tile Sizes | |
|--------------------|----------------------------|
| Median Tile Size: | 1,500m x 1,500m |
| Minimum Tile Size: | 1,500m x 1,500m |
| Maximum Tile Size: | 1,500m x 1,500m |
| X Range: | 531000.00m to 562500.00m |
| Y Range: | 4927500.00m to 5011500.00m |

| ✓ Spatial Reference System | | |
|----------------------------|------------------------------------------------|--------------|
| Horizontal Projection | NAD83(2011) / UTM zone 11N | 5 of 5 Tiles |
| Horizontal Datum | NAD83 (National Spatial Reference System 2011) | 5 of 5 Tiles |
| Horizontal Units | meter | 5 of 5 Tiles |
| Vertical Datum | NAVD88 height - Geoid12B (m) | 5 of 5 Tiles |
| Vertical Units | meter | 5 of 5 Tiles |
| Vertical USGS-Compliant | Yes | 5 of 5 Tiles |
| GDAL 2.x Compatible | Yes | 5 of 5 Tiles |
| Geoid | Geoid12B | 5 of 5 Tiles |
| Matches OGC Template | Yes | 5 of 5 Tiles |

| ✓ Raster | | |
|---------------------|---------------------------|--------|
| File Type: | TIF | 5 of 5 |
| Bands: | 1 | 5 of 5 |
| Grid Size (pixels): | 1500 x 1500 | 5 of 5 |
| Pixel Resolution: | 1.00000000m x 1.00000000m | 5 of 5 |
| Pixel Type: | 32-bit | 5 of 5 |
| Compression: | None | 5 of 5 |
| No Data Value: | -999999 | 5 of 5 |



N 45° 01' 57" W 116° 24' 23"

