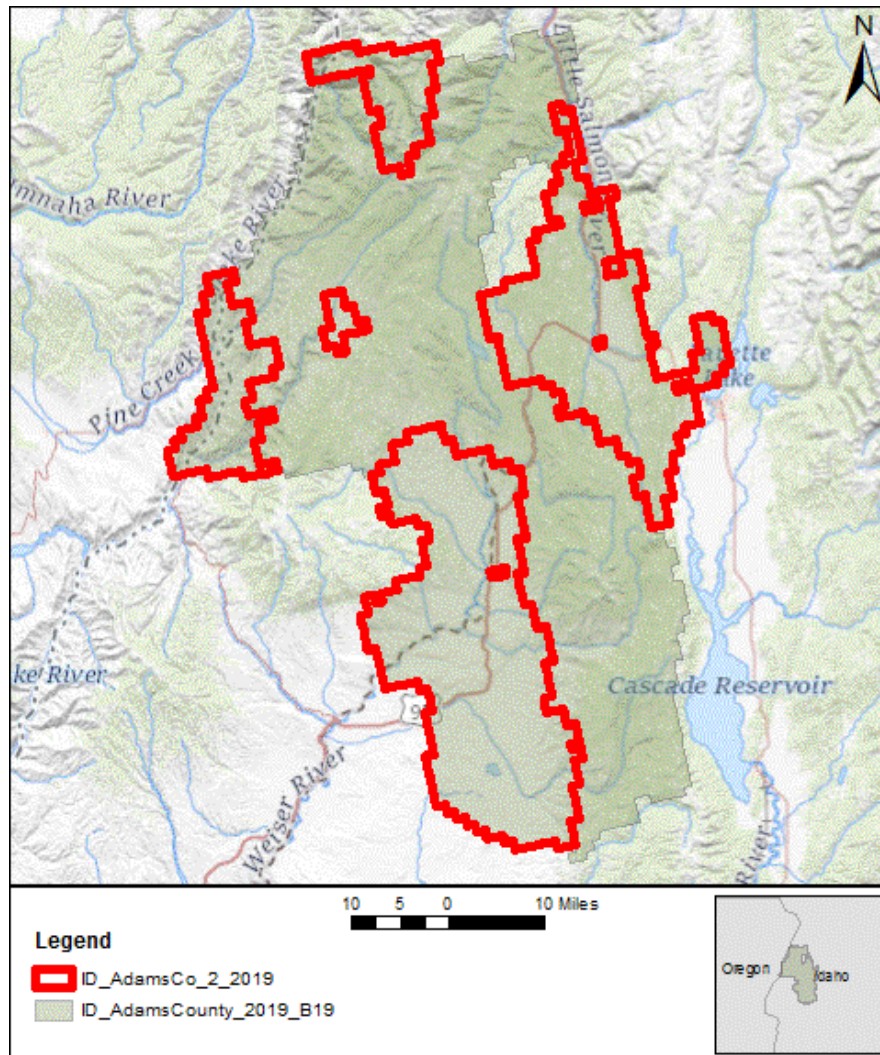


# Data Validation Report

from the National Geospatial Technical Operations Center  
in Support of the 3D Elevation Program

**ID\_AdamsCo\_2\_2019**

2021-09-27



Based on this review, the delivered data is **EXPECTED TO MEET** 3D Elevation Program requirements.

## Work Unit Summary Information

<b>Project Name:</b> ID_AdamsCounty_2019_B19	<b>Project ID:</b> 183171
<b>WU Name:</b> ID_AdamsCo_2_2019	<b>Work Unit ID:</b> 217237
<b>Mechanism:</b> GPSC	<b>Lidar Base Spec:</b> 1.3
<b>Quality Level:</b> 2	<b>P-Method:</b> 7 - Linear-Mode Lidar
<b>Horizontal EPSG Code:</b> 6340	<b>Vertical EPSG Code:</b> 5703 <b>Geoid Model</b> GEOID 12B
<b>The National Map Help Desk Email:</b> tnm_help@usgs.gov	

The U.S. Geological Survey evaluates absolute vertical accuracy of the lidar and lidar-derived bare earth digital elevation model (DEM) data at the project level. Data are produced to meet 9.8 cm absolute vertical accuracy at the 95-percent confidence level in non-vegetated, open terrain. To review vertical accuracy results, please see the project report

## Breaklines

Based on this review, the USGS-NGTOC **ACCEPTS** the Breaklines.

Breaklines are visually reviewed in conjunction with the bare earth DEM for spatial and geometric accuracy. Breaklines are confirmed to be three dimensional (3D) features and that elevations are at or just below the immediately surrounding terrain. Single- and double-line drainages are reviewed to ensure downstream flow. The USGS recognizes that differences in collection methodology, resampling techniques, and other factors that are unique to proprietary production do occur, and these will result in minor horizontal and vertical differences between breaklines derived on the fly.

Error Type	Subtype	Quantity
Spatial Reference	None	1

**Dictionary Description:** Spatial Reference information is incorrect or is not correctly reported for some or all Breaklines

## Reporting Metadata

Based on this review, the USGS-NGTOC **ACCEPTS** the Reporting Metadata.

Reports from the contractor, including calibration, collection, and processing methods, are reviewed for accurate information. For more information, please see the work units metadata.

## FGDC XML Metadata

Based on this review, the USGS-NGTOC **ACCEPTS** the FGDC XML Metadata.

CSGDM .xml metadata are parsed using the USGS Geospatial Metadata Validation Service and reviewed for accurate information. CSDGM is maintained by the Federal Geographic Data Committee (FGDC).

Error Type	Subtype	Quantity
Content Inaccurate	None	1
<b>Dictionary Description:</b> There is incorrect information in the XML metadata files. Tag location and description of occurrence will be indicated in text field.		
Content Inaccurate	None	1
<b>Dictionary Description:</b> There is incorrect information in the XML metadata files. Tag location and description of occurrence will be indicated in text field.		
Content Inaccurate	None	1
<b>Dictionary Description:</b> There is incorrect information in the XML metadata files. Tag location and description of occurrence will be indicated in text field.		

## Spatial Metadata

Based on this review, the USGS-NGTOC **ACCEPTS** the Spatial Metadata.

Spatial metadata from the contractor, including raster and vector datasets, are evaluated together with pertinent deliverables for geometric fidelity and attribution accuracy. For more information, please see the work units metadata.

## DEM

Based on this review, the USGS-NGTOC **ACCEPTS** the DEM.

Visual review is performed on .tif bare earth rasters at a 1:5,000 or larger viewing scale to validate point cloud geometry, raster processing methodology, point classification, and breaklines. Comprehensive review is completed to ensure consistency and accuracy across all files. For additional information, please see this work units metadata folder.

Error Type	Subtype	Quantity
Export	Interpolation	0
<b>Dictionary Description:</b> Any artifacts relating to interpolation of the DEM from the lidar point cloud that appear erroneous. This is to include edge artifacts.		
Export	Void	0
<b>Dictionary Description:</b> A specific type of interpolation error that is an area lacking data in the DEM, not due to point misclassifications or data voids in the point cloud.		

## Pointcloud

Based on this review, the USGS-NGTOC **ACCEPTS** the Pointcloud.

Visual and statistical review is performed on classified .las files to validate adherence to contracted specifications. A comprehensive review is completed to ensure consistency and accuracy across all files, including the spatial reference system. Classification verification is limited to the minimum required by applicable Lidar Base Specification. Classifications beyond the minimum are not verified by USGS. LAS files are evaluated to ensure the public header block, point data records,

and variable/extended variable length records are correctly populated. For additional information, please see the work units metadata folder.

Error Type	Subtype	Quantity
Point Mis-classification	None	0
<b>Dictionary Description:</b> There is an incorrect classification of points. Text field will be used to specify.		