

Classified Point Cloud

Deliverable 1 Summary

✓ General		
Folder:	F:\183391\ID_NorthernID_1_2019\point_cloud\tilecls	
Total # of Files:	3,349	(All Valid)
Total File Size:	3.3 TB	(3,653,848,593,396 bytes)

✓ Tile Sizes	
Median Tile Size:	1,500m x 1,500m
Minimum Tile Size:	6m x 3m
Maximum Tile Size:	1,500m x 1,500m
X Range:	495595.93m to 571997.38m
Y Range:	5244609.91m to 5428090.63m
Elevation Range:	-163.62m to 3193.81m

✓ LAS Version And Point Record Formats	
v1.4, Point Record Format 6	3,349 of 3,349 Tiles

✓ Spatial Reference System		
Horizontal Projection	NAD83(2011) / UTM zone 11N	3,349 of 3,349 Tiles
Horizontal Datum	NAD83 (National Spatial Reference System 2011)	3,349 of 3,349 Tiles
Horizontal Units	meter	3,349 of 3,349 Tiles
Vertical Datum	NAVD88 height - Geoid12B (m)	3,349 of 3,349 Tiles
Vertical Units	meter	3,349 of 3,349 Tiles
Vertical USGS-Compliant	Yes	3,349 of 3,349 Tiles
Geoid	Geoid12B	3,349 of 3,349 Tiles
Storage Method	WKT	3,349 of 3,349 Tiles
Matches OGC Template	Yes	3,349 of 3,349 Tiles

✓ GPS Time Type	
Adjusted	3,349 of 3,349 Tiles

✓ File Source ID Equals 0	
Yes	3,349 of 3,349 Tiles

✓ VLR/EVLR Reserved Equals 0	
Yes	13,396 of 13,396 Records

✓ Unnecessary Bytes At End Of File	
No	3,349 of 3,349 Tiles

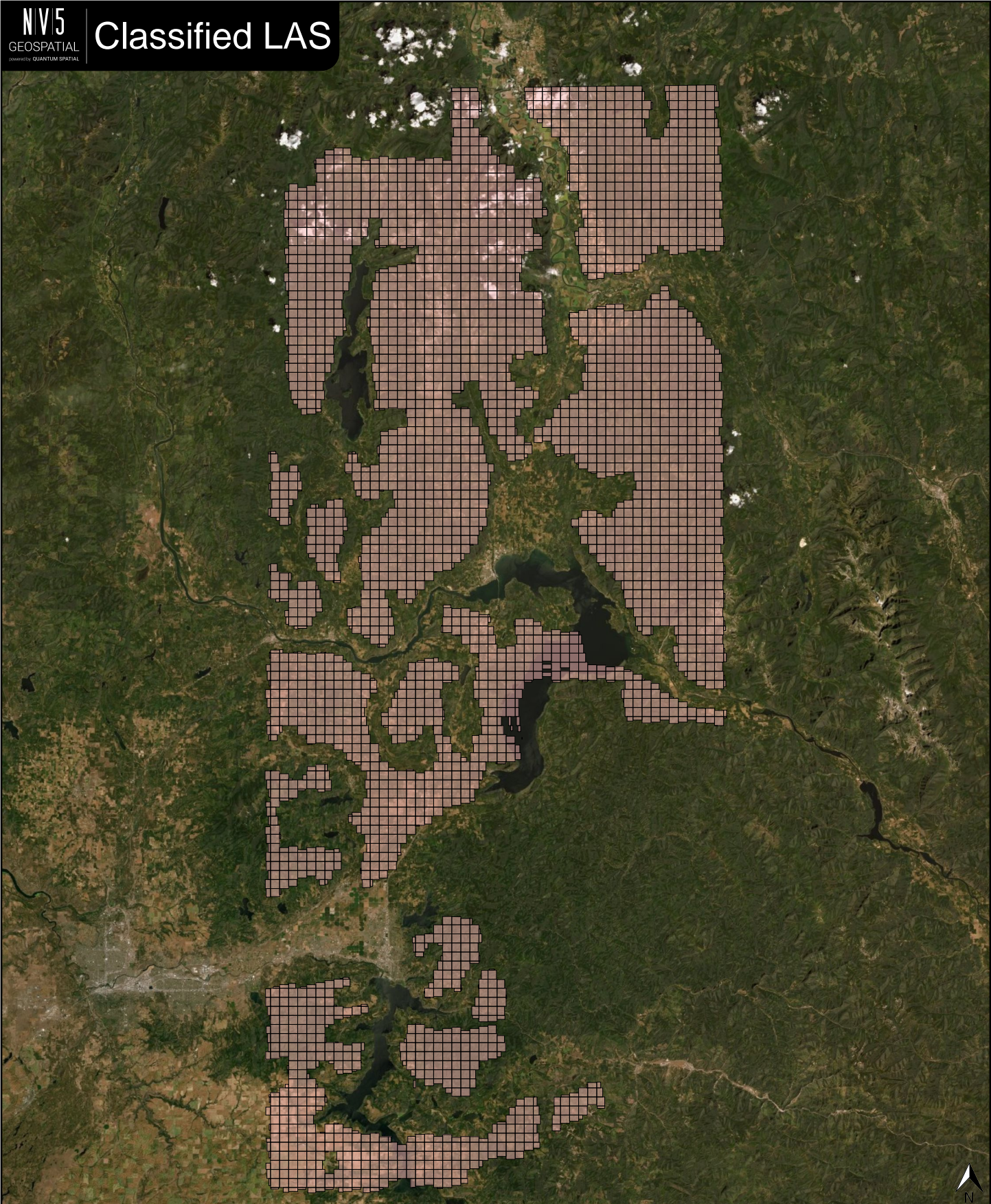
✓ Legacy Point Count Check	
Zero	3,349 of 3,349 Tiles

✓ System Identifier	
MERGE	3,349 of 3,349 Tiles

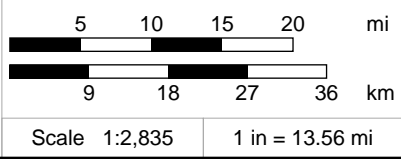
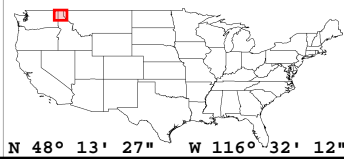
Classified Point Cloud Continued...

Deliverable 1 Summary

✓ Generating Software	
QSI LiDAR Suite	3,349 of 3,349 Tiles



Classified LAS Tiles (3,349)

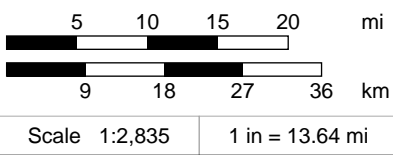
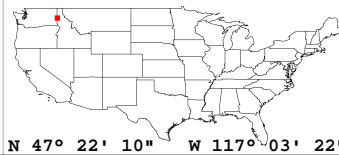
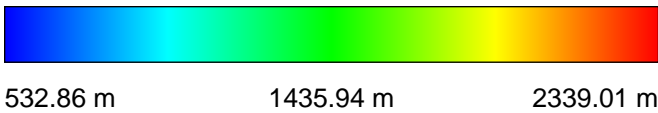
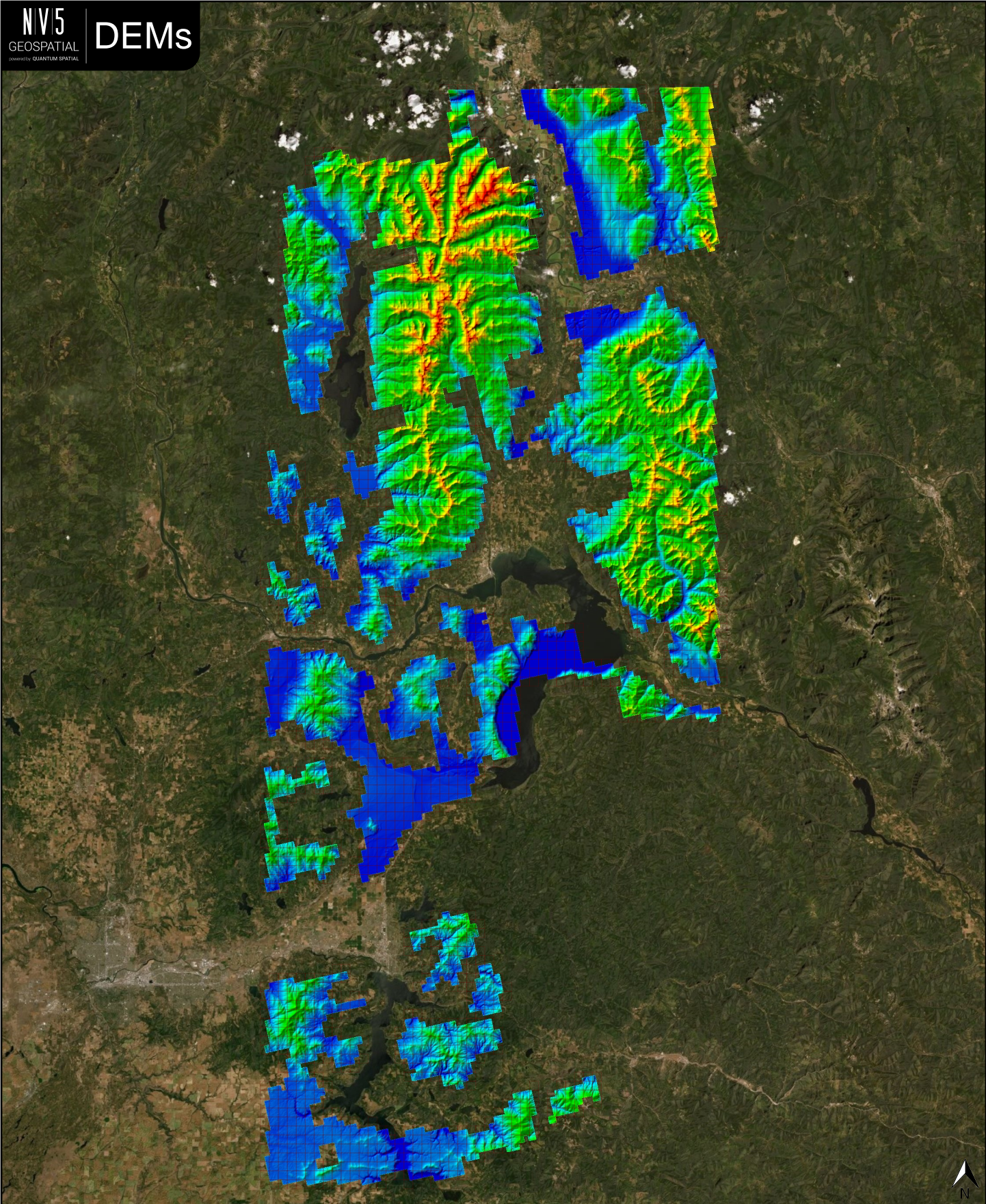


✓ General		
Folder:	F:\183391\ID_NorthernID_1_2019\bare_earth\be_rasters	
Total # of Files:	3,353	(All Valid)
Total File Size:	29.5 GB	(31,663,854,320 bytes)

✓ Tile Sizes	
Median Tile Size:	1,500m x 1,500m
Minimum Tile Size:	1,500m x 1,500m
Maximum Tile Size:	1,500m x 1,500m
X Range:	495000.00m to 573000.00m
Y Range:	5244000.00m to 5428500.00m

✓ Spatial Reference System		
Horizontal Projection	NAD83(2011) / UTM zone 11N	3,353 of 3,353 Tiles
Horizontal Datum	NAD83 (National Spatial Reference System 2011)	3,353 of 3,353 Tiles
Horizontal Units	meter	3,353 of 3,353 Tiles
Vertical Datum	NAVD88 height - Geoid12B (m)	3,353 of 3,353 Tiles
Vertical Units	meter	3,353 of 3,353 Tiles
Vertical USGS-Compliant	Yes	3,353 of 3,353 Tiles
GDAL 2.x Compatible	Yes	3,353 of 3,353 Tiles
Geoid	Geoid12B	3,353 of 3,353 Tiles
Matches OGC Template	Yes	3,353 of 3,353 Tiles

✓ Raster		
File Type:	TIF	3,353 of 3,353
Bands:	1	3,353 of 3,353
Grid Size (pixels):	1500 x 1500	3,353 of 3,353
Pixel Resolution:	1.00000000m x 1.00000000m	3,353 of 3,353
Pixel Type:	32-bit	3,353 of 3,353
Compression:	None	3,353 of 3,353
No Data Value:	-999999	3,353 of 3,353

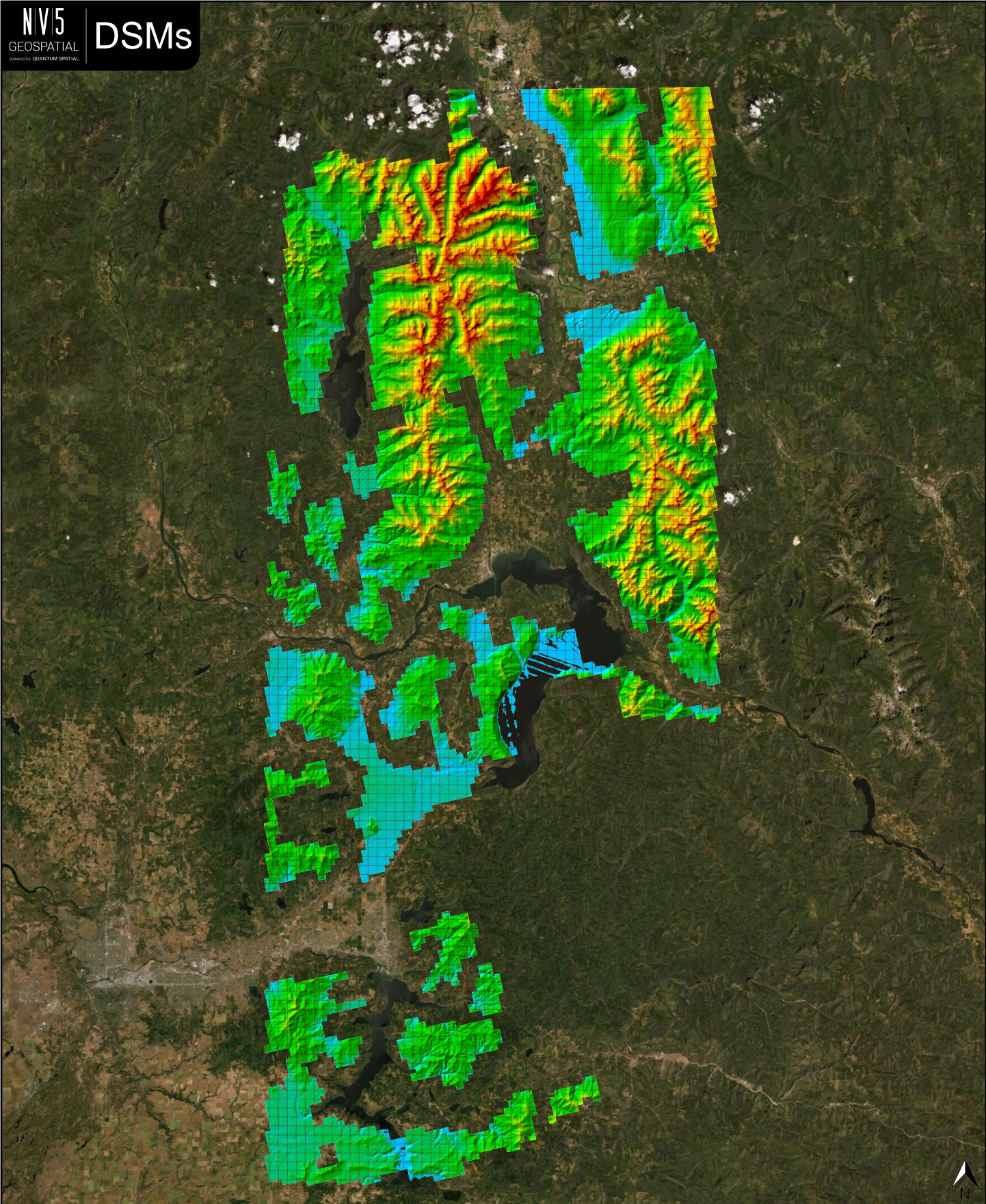


✓ General		
Folder:	F:\183391\ID_NorthernID_1_2019\metadata\spatial_metadata\contractor_provided\maximum_surface_height_raster	
Total # of Files:	3,353	(All Valid)
Total File Size:	29.5 GB	(31,663,854,320 bytes)

✓ Tile Sizes	
Median Tile Size:	1,500m x 1,500m
Minimum Tile Size:	1,500m x 1,500m
Maximum Tile Size:	1,500m x 1,500m
X Range:	495000.00m to 573000.00m
Y Range:	5244000.00m to 5428500.00m

✓ Spatial Reference System		
Horizontal Projection	NAD83(2011) / UTM zone 11N	3,353 of 3,353 Tiles
Horizontal Datum	NAD83 (National Spatial Reference System 2011)	3,353 of 3,353 Tiles
Horizontal Units	meter	3,353 of 3,353 Tiles
Vertical Datum	NAVD88 height - Geoid12B (m)	3,353 of 3,353 Tiles
Vertical Units	meter	3,353 of 3,353 Tiles
Vertical USGS-Compliant	Yes	3,353 of 3,353 Tiles
GDAL 2.x Compatible	Yes	3,353 of 3,353 Tiles
Geoid	Geoid12B	3,353 of 3,353 Tiles
Matches OGC Template	Yes	3,353 of 3,353 Tiles

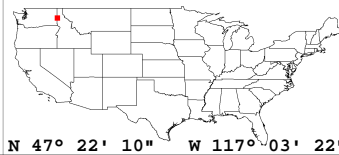
✓ Raster		
File Type:	TIF	3,353 of 3,353
Bands:	1	3,353 of 3,353
Grid Size (pixels):	1500 x 1500	3,353 of 3,353
Pixel Resolution:	1.00000000m x 1.00000000m	3,353 of 3,353
Pixel Type:	32-bit	3,353 of 3,353
Compression:	None	3,353 of 3,353
No Data Value:	-999999	3,353 of 3,353



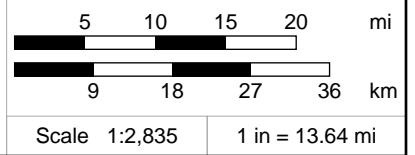
-160.60 m

1090.86 m

2342.32 m



N 47° 22' 10" W 117° 03' 22"

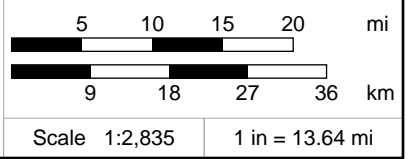
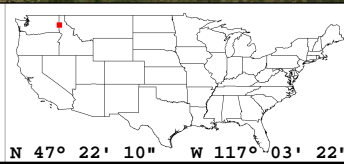
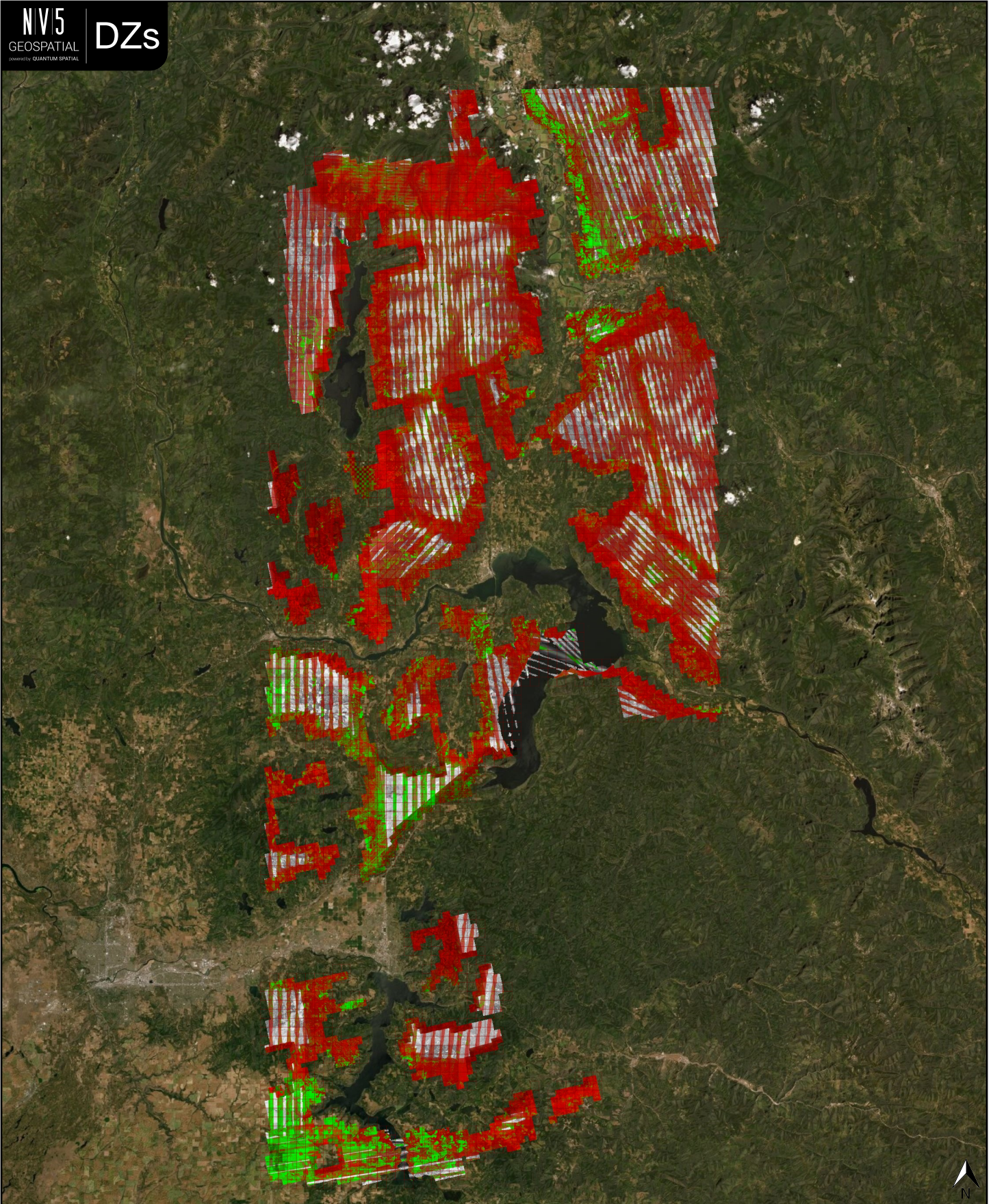


✓ General		
Folder:	F:\183391\ID_NorthernID_1_2019\metadata\spatial_metadata\contractor_provided\swath_separation_images	
Total # of Files:	3,353	(All Valid)
Total File Size:	22.1 GB	(23,738,602,930 bytes)

✓ Tile Sizes	
Median Tile Size:	1,500m x 1,500m
Minimum Tile Size:	1,500m x 1,500m
Maximum Tile Size:	1,500m x 1,500m
X Range:	495000.00m to 573000.00m
Y Range:	5244000.00m to 5428500.00m

✓ Spatial Reference System		
Horizontal Projection	NAD83(2011) / UTM zone 11N	3,353 of 3,353 Tiles
Horizontal Datum	NAD83 (National Spatial Reference System 2011)	3,353 of 3,353 Tiles
Horizontal Units	meter	3,353 of 3,353 Tiles
Vertical Datum	NAVD88 height - Geoid12B (m)	3,353 of 3,353 Tiles
Vertical Units	meter	3,353 of 3,353 Tiles
Geoid	Geoid12B	3,353 of 3,353 Tiles

✓ Raster		
File Type:	TIF	3,353 of 3,353
Bands:	3	3,353 of 3,353
Grid Size (pixels):	1500 x 1500	3,353 of 3,353
Pixel Resolution:	1.000000000m x 1.000000000m	3,353 of 3,353
Pixel Type:	8-bit (RGB)	3,353 of 3,353
Compression:	NONE	3,353 of 3,353
No Data Value:	0	3,353 of 3,353

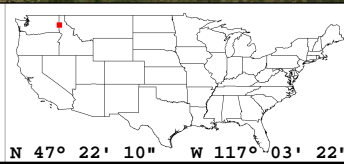


✓ General		
Folder:	F:\183391\ID_NorthernID_1_2019\other\Intensity	
Total # of Files:	3,353	(All Valid)
Total File Size:	7.4 GB	(7,917,184,072 bytes)

✓ Tile Sizes	
Median Tile Size:	1,500m x 1,500m
Minimum Tile Size:	1,500m x 1,500m
Maximum Tile Size:	1,500m x 1,500m
X Range:	495000.00m to 573000.00m
Y Range:	5244000.00m to 5428500.00m

✓ Spatial Reference System		
Horizontal Projection	NAD83(2011) / UTM zone 11N	3,353 of 3,353 Tiles
Horizontal Datum	NAD83 (National Spatial Reference System 2011)	3,353 of 3,353 Tiles
Horizontal Units	meter	3,353 of 3,353 Tiles
Vertical Datum	NAVD88 height - Geoid12B (m)	3,353 of 3,353 Tiles
Vertical Units	meter	3,353 of 3,353 Tiles
Geoid	Geoid12B	3,353 of 3,353 Tiles

✓ Raster		
File Type:	TIF	3,353 of 3,353
Bands:	1	3,353 of 3,353
Grid Size (pixels):	1500 x 1500	3,353 of 3,353
Pixel Resolution:	1.00000000m x 1.00000000m	3,353 of 3,353
Pixel Type:	8-bit Unsigned Integer (MINISBLACK)	3,353 of 3,353
Compression:	NONE	3,353 of 3,353
No Data Value:	0	3,353 of 3,353



N 47° 22' 10" W 117° 03' 22"

