

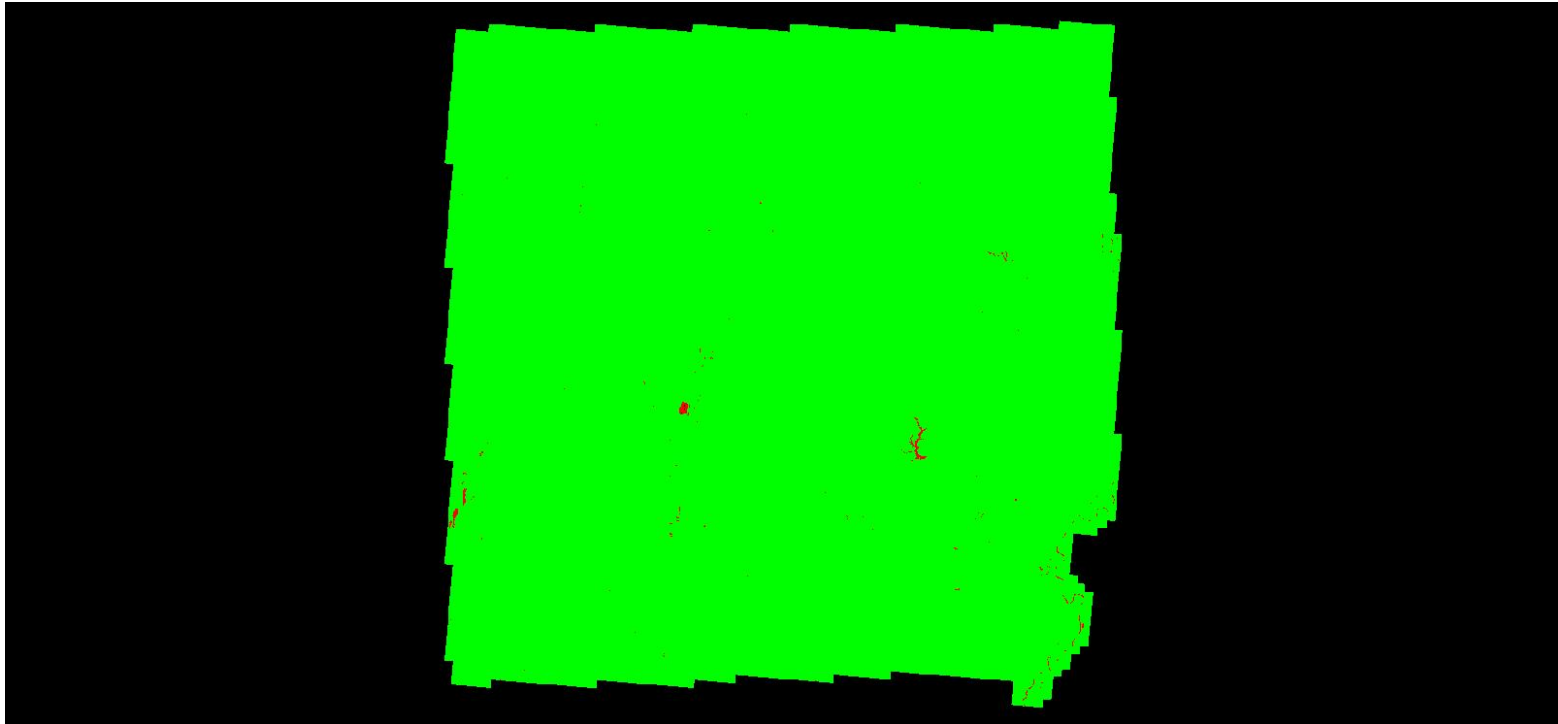
### C-4.2 Grid Based Test: Grid Cell = 100m x 100m, Required PPSM Tested Including Overlap Bit Flagged Points

QL2 selected

Required QL2 PPSM  $\geq 2$

First return point count computed using a cell size of 100m x 100m. The minimum required point per cell value is 10,000 times (100 x 100) that of the original specification (10,000 x 2 = 20,000) to scale the required point count up to the area of the inflated cell.

#### First Return Point Density Map



Color Description

**Green** Density greater than or equal to minimum specification of 20,000 points per cell  
**Red** Density less than minimum specification of 20,000 points per cell

Percentage of cells by color

0.00  
100.00

Average first return density =  $0.00 / 10,000 = 0.00$  ppsm