

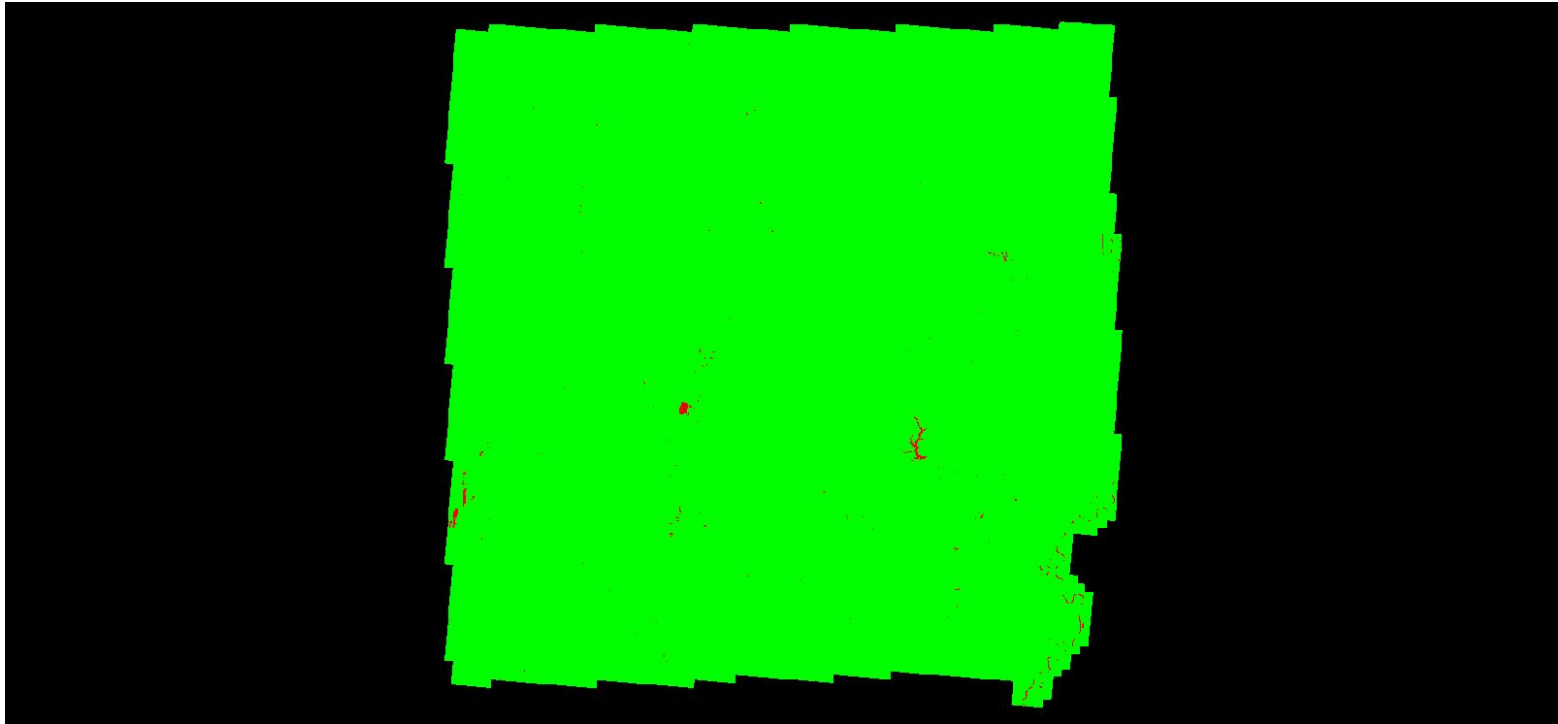
C-4.2 Grid Based Test: Grid Cell = 100m x 100m, Required PPSM Tested Excluding Overlap Bit Flagged Points

QL2 selected

Required QL2 PPSM ≥ 2

First return point count computed using a cell size of 100m x 100m. The minimum required point per cell value is 10,000 times (100 x 100) that of the original specification (10,000 x 2 = 20,000) to scale the required point count up to the area of the inflated cell.

First Return Point Density Map



Color Description

■ Density greater than or equal to minimum specification of 20,000 points per cell
■ Density less than minimum specification of 20,000 points per cell

Percentage of cells by color

0.00
100.00

Average first return density = 0.00 / 10,000 = 0.00 ppsm