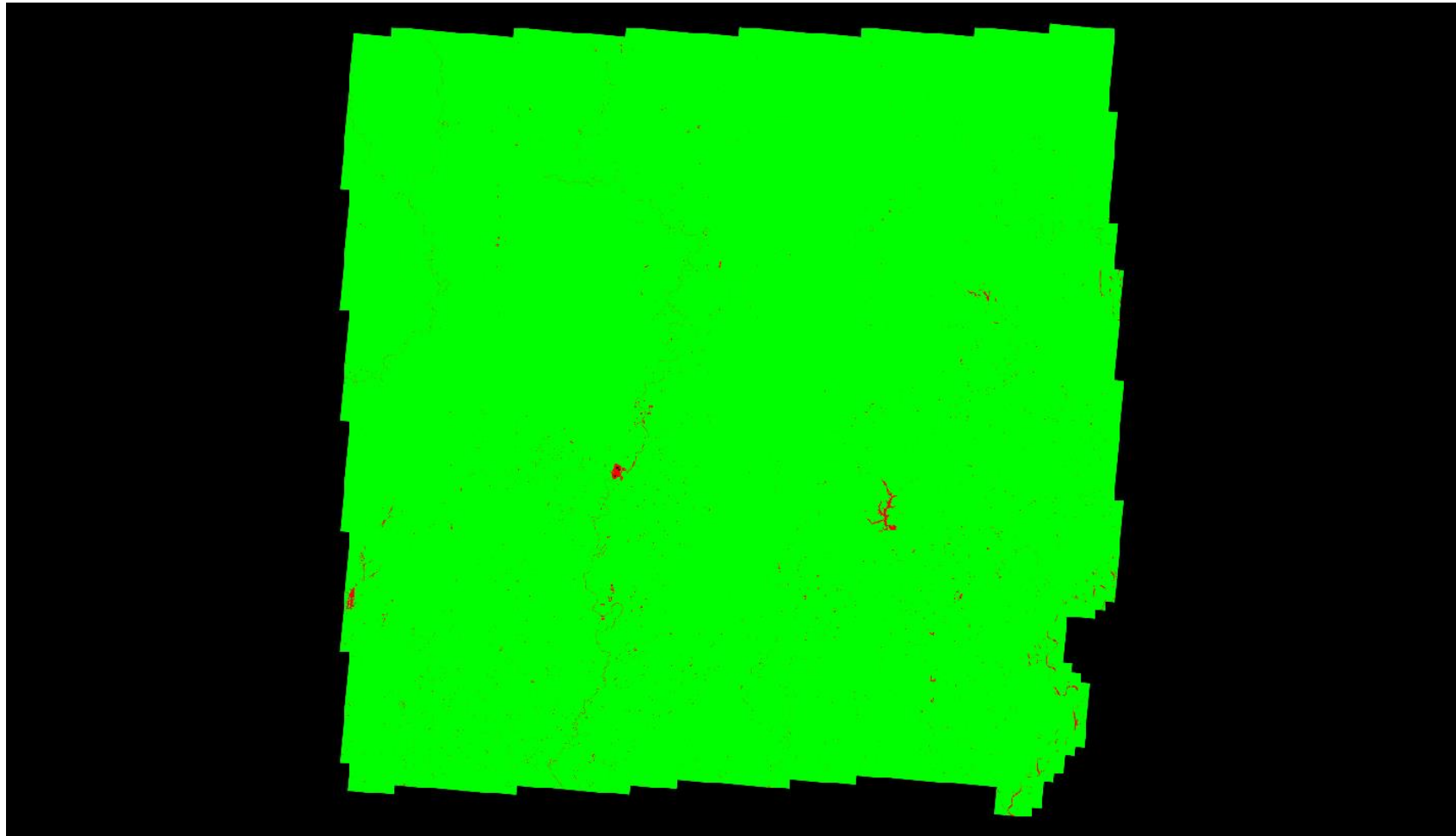


C-5 Report on Data Voids

[Result Path - D:\00_ISGS\ISGS Wabash Embarras OC\C 5\DataVoids_SingleFile.jp2](#)



Cell size: 9.318 US Survey Feet

- Green: Cells containing at least 1 first return lidar point (number of cells = 1,648,341,692)
- Red: Cells containing no first return lidar points (number of cells = 3,092,272)
- Black: Background Color: Null data