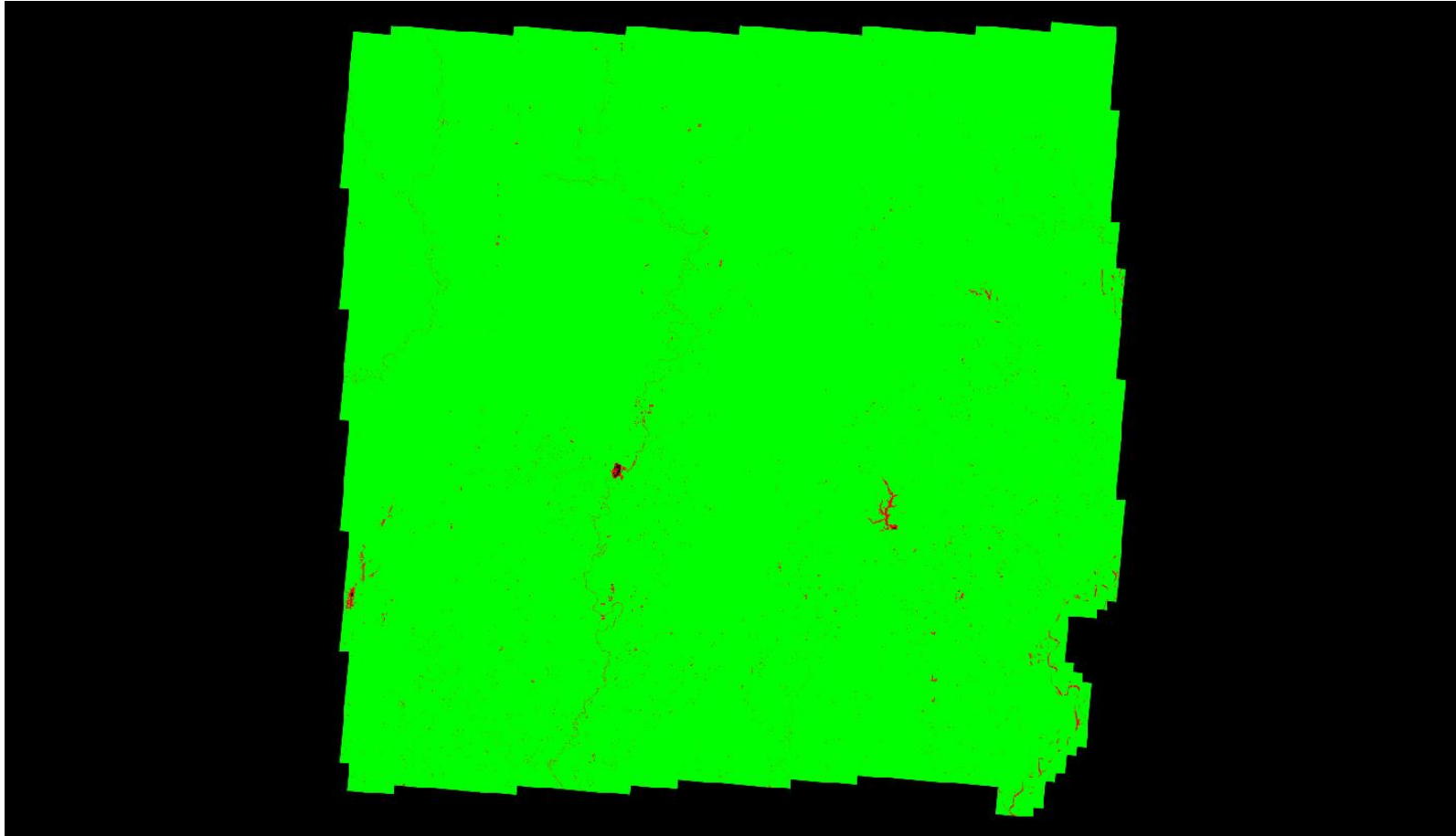


## C-6.1 Report on Spatial Distribution and Regularity - continued

[Result Path - D:\00\\_ISGS\ISGS\\_Wabash\\_Embarras\\_OC\C\\_6\SpatialDistribution\\_SingleFile.jp2](#)



Cell size: 4.659 US Survey Feet

- Green: Cells containing at least one first return lidar point (number of cells = 6,584,974,692)
  - Red: Cells not containing at least one first return lidar point (number of cells = 16,622,087)
  - Background Color: Null data
- Percentage of cells in the grid that contain at least one first return lidar point = 99.75% (Requirement is typically 90%)  
See JPG2000 file for full resolution results