

University of Illinois

LiDAR 2018-Data Acquisition & Processing Boone & Winnebago Counties (U18049)

Lidar Mapping Report

Contractor: Merrick & Company

Client Point-of-Contact (POC):

Sheena K. Beaverson
Program Manager, Illinois Height Modernization
Illinois State Geological Survey
Prairie Research Institute
University of Illinois at Urbana-Champaign
Champaign, Illinois 61820
Ph: (217) 244-9306

Merrick Project Manager:

Name: Doug Jacoby, CMS, GISP
Address: 5970 Greenwood Plaza Blvd.
Greenwood Village, CO 80111
Office: (303) 353-3903
E-mail: doug.jacoby@merrick.com

Prepared For:



Submitted By:



Table of Contents

| | |
|--|----|
| Glossary of Terms | 4 |
| Project Summary | 6 |
| Project Report | 7 |
| Lidar Flight Information | 7 |
| Airports of Operation | 8 |
| Aerial Mission(s) Duration / Time | 10 |
| GNSS / IMU Data..... | 11 |
| GPS Controls | 11 |
| Lidar Calibration – see appendix 1 for a more detailed workflow description..... | 11 |
| Relative Accuracy – flight line to flight line..... | 12 |
| Unfiltered Lidar Control Point Report..... | 14 |
| Lidar Control Point Layout | 17 |
| Lidar Filtering and Classification | 18 |
| Filtered Lidar Checkpoint Report..... | 20 |
| Hydro-flattening Breakline Collection | 25 |
| List of Deliverables..... | 27 |
| Appendix 1..... | 28 |
| Appendix 2..... | 29 |

Glossary of Terms

| Term | Description |
|-------------|---|
| AGL | Above Ground Level |
| AGPS | Airborne Global Positioning System |
| ANPD | Aggregate Nominal Pulse Density |
| ANPS | Aggregate Nominal Pulse Spacing |
| ASPRS | American Society of Photogrammetry and Remote Sensing |
| AT | Aerial Triangulation |
| CD | Compact Disk |
| CMS | Certified Mapping Scientist |
| CORS | Continuous Operating Reference Station |
| CP | Certified Photogrammetrist |
| CVA | Consolidated Vertical Accuracy |
| DACS™ | Digital Airborne Camera System |
| DEM | Digital Elevation Model |
| DFIRM | Digital Flood Insurance Rate Maps |
| DSM | Digital Surface Model |
| DTM | Digital Terrain Model |
| DVD | Digital Versatile Disk / Digital Video Disk |
| DXF | Data Exchange Format / Drawing Interchange |
| FIRM | Flood Insurance Rate Maps |
| FEMA | Federal Emergency Management |
| FGDC | Federal Geographic Data Committee |
| FVA | Fundamental Vertical Accuracy |
| FY | Fiscal Year |
| GIS | Geographic Information System |
| GISP | Geographic Information System Professional |
| GNSS | Global Navigation Satellite System |
| GPS | Global Positioning System |
| GSD | Ground Sample Distance |
| HARN | High Accuracy Reference Network |
| HDD | Hard Drive Disk |
| HPGN | High Precision Geodetic Network |
| IMU | Inertial Measurement Unit |
| INS | Inertial Navigation System |
| LAS | (or .las) – industry accepted LIDAR data exchange file format |
| LB | License Business |
| LS | Land Surveyor |
| LIDAR | (or Lidar) Light Detection And Ranging |
| MARS® | Merrick Advanced Remote Sensing |
| Merrick | Merrick & Company |
| MSL | Mean Sea Level |
| NAD | North American Datum |
| NDEP | National Digital Elevation Program |
| NGP | National Geospatial Program |
| NGS | National Geodetic Survey |
| NMAS | National Map Accuracy Standards |
| No. | Number |
| NPS | Nominal Point Spacing |

| | |
|--------|--|
| NSRS | National Spatial Reference System |
| NSSDA | National Standard for Spatial Data |
| NVA | Non-vegetated Vertical Accuracy |
| OPUS | Online Positioning User Service |
| PDOP | Positional Dilution Of Precision |
| PLS | Professional Land Surveyor |
| PLSS | Public Land Survey System |
| ppsm | Points (or pulses) per square meter |
| PSM | Professional Surveyor and Mapper |
| QL1 | Quality Level One |
| QL2 | Quality Level Two |
| RLS | Registered Land Surveyor |
| RGB | Red, Green, Blue (i.e., three-band image) |
| RGBNIR | Red, Green, Blue, Near Infra-Red (i.e., four-band image) |
| RMSE | Root Mean Square Error |
| SBET | Smoothed Best Estimated Trajectory |
| SHA | Secured Hash Standard |
| SPCS | State Plane Coordinate System |
| SVA | Supplemental Vertical Accuracy |
| TIN | Triangular Irregular Network |
| USGS | United State Geological Survey |
| VVA | Vegetated Vertical Accuracy |
| XML | eXtensible Markup Language |

Project Summary

Merrick was awarded the Data Acquisition & Processing Boone & Winnebago Counties (U18049) project to provide high fidelity lidar mapping for Boone and Winnebago Counties commencing in the Spring of 2018. The area that comprises Boone and Winnebago Counties is approximately 860 square miles. Services included lidar acquisition, ground control survey, lidar post-processing, lidar classification, hydro-flattening, QA/QC, and development of derivative deliverable products.

The lidar mapping requirements and deliverables meet Quality Level Two (QL2) standards for final deliverables as outlined in the USGS-NGP Lidar Base Specifications, Techniques and Methods 11–B4, Version 1.3, November 2014 (TM11-B4) (<http://pubs.usgs.gov/tm/11b4/pdf/tm11-B4.pdf>). QL2 lidar specifications suggest a pulse density of greater than or equal to two pulses per square meter ($\geq 2\text{ppsm}$) Aggregate Nominal Pulse Density (ANPD), and pulse spacing of less than or equal to seventy-one centimeters ($\leq 0.71\text{m}$) Aggregate Nominal Pulse Spacing (ANPS). For this project, the point density specification was modified to produce an Aggregate Nominal Point Density (ANPD) of greater than or equal to four points per square meter ($\geq 4\text{ppsm}$), or less than or equal to five-tenths of a meter ($\leq 0.50\text{m}$) Aggregate Nominal Point Spacing (ANPS).

The vertical accuracy requirements of the lidar data meets or exceeds the following:

Absolute Vertical Accuracy

- $\leq 10\text{cm}$ RMSEz
- $\leq 19.6\text{cm}$ Non-vegetated Vertical Accuracy (NVA) at the 95% confidence level
- $\leq 29.4\text{cm}$ Vegetated Vertical Accuracy (VVA) at the 95% percentile

Project Boundary Parameters

- Winnebago County, IL
 - Full extent of Esri shapefile *Winn_TileIndex*
 - Approximately 554.55 square miles
 - 3,865 tiles formatted as 2,000' x 2,000'
- Boone County, IL
 - Full extent of Esri shapefile *Boone_TileIndex*
 - Approximately 303.03 square miles
 - 2,112 tiles formatted as 2,000' x 2,000'

Project Spatial Reference

- Horizontal Datum – North American Datum of 1983 (NAD 83)
- Epoch – National Adjustment of 2011 (NA2011) (epoch 2010.00)
- Geoid – GEOID 12B
- Vertical Datum – North American Vertical Datum of 1988 (NAVD 88)
- Projection – Illinois State Plane Coordinate System, East Zone (Boone County) and West Zone (Winnebago County)
- Units – U.S. Survey Foot

CONTACT INFORMATION

Questions regarding this report should be addressed to:

Doug Jacoby, CMS, GISP
Program Manager

Merrick & Company

5970 Greenwood Plaza Blvd.
Greenwood Village, CO 80111
T: +1 303-353-3903
Doug.jacoby@merrick.com

Project Report

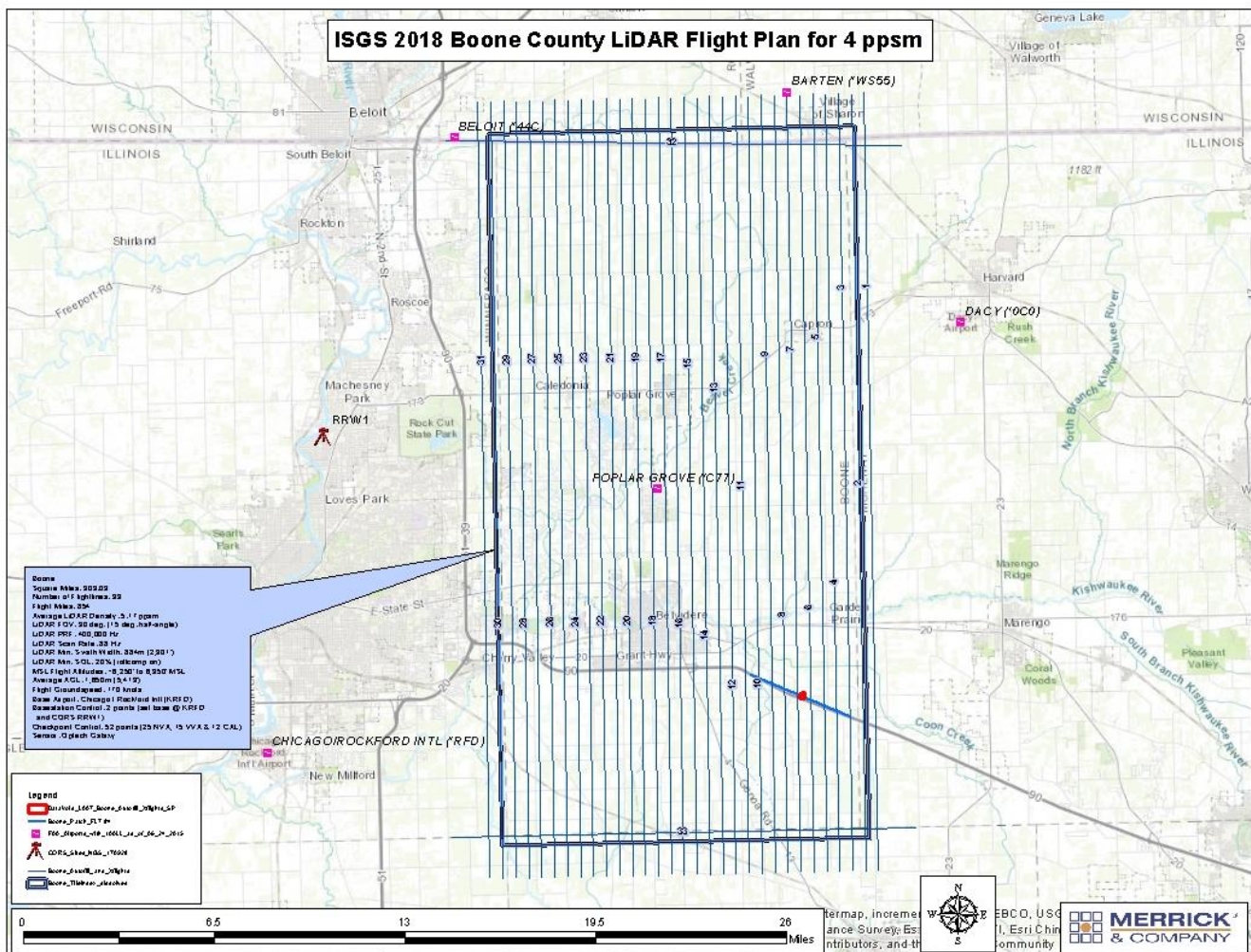
The contents of this report summarize the methods used to calibrate and classify the lidar data as well as the results of these methods for the project U18049.

Lidar Flight Information

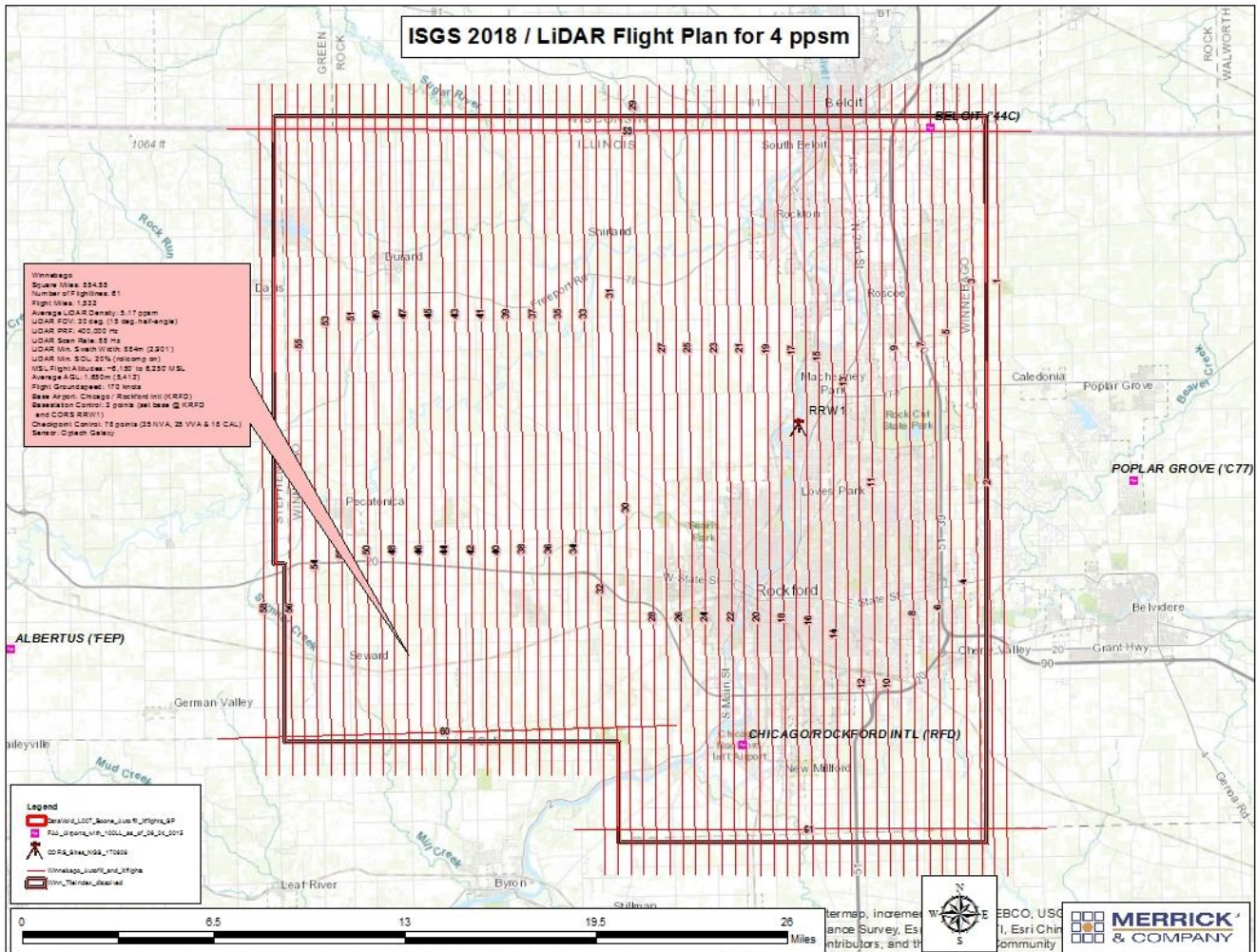
The acquisition area for the U18049 project is delineated by the extent of the client-approved Esri shapefiles and cover full tiles. Merrick acquired the lidar point cloud utilizing an Optech Galaxy lidar sensor. The Galaxy is a high performance 550 kHz lidar sensor capable of collecting large areas efficiently.

Merrick planned an acquisition area to include a proper flight line orientation and numbers for accurate sensor calibration. See below illustration of the proposed lidar flight plan.

Boone County



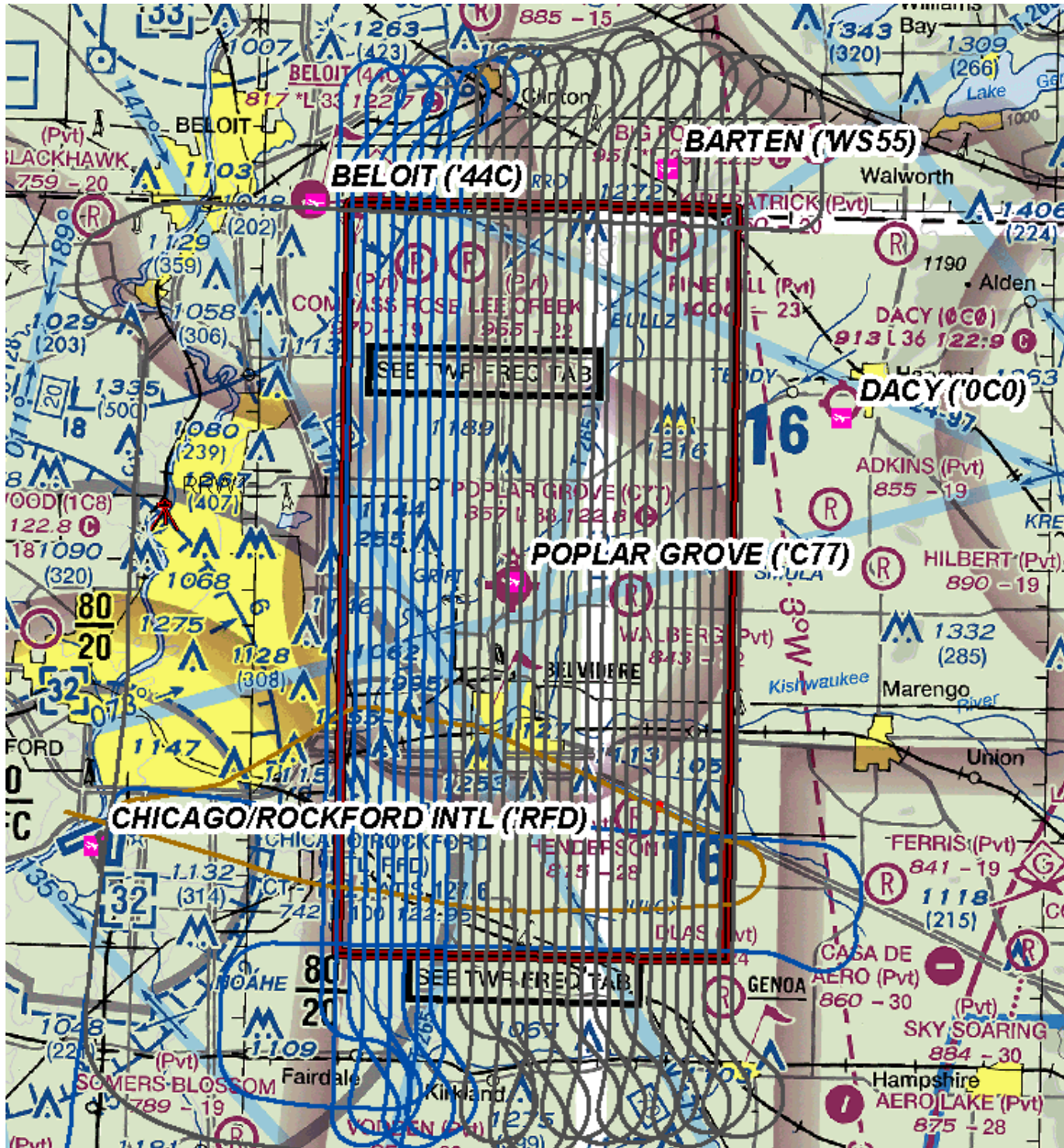
Winnebago County



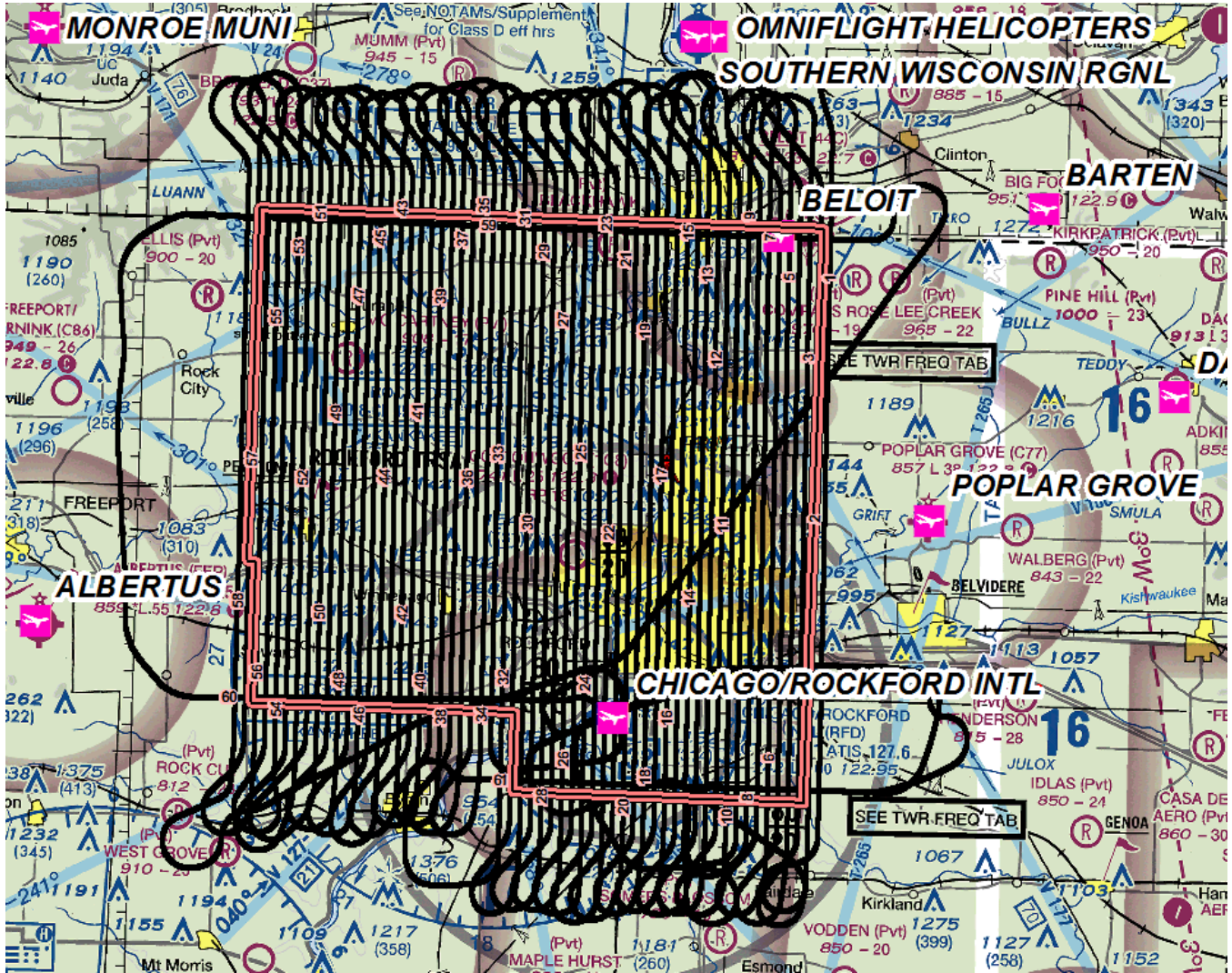
Airports of Operation

Centennial airport was used for the collection of this project. See below for a list of the airports used as well as an image of the project area with airport(s) displayed.

- Chicago/Rockford International Airport – Chicago/Rockford, Illinois
 - FAA Identifier: RFD
 - Lat/Long: 42-11-43.3000N / 089-05-50.0000W
 - Elevation: 742 ft. / 226.2 m (surveyed)
 - From City: 68 miles NW of central business district of the associated city
 - Zip Code: 61109



Winnebago County



Aerial Mission(s) Duration / Time

Merrick’s lidar acquisition was collected using a fixed wing aircraft and an Optech Galaxy lidar sensor. Data collection for the project was accomplished between April 22, 2018 and April 28, 2018. Each mission represents a lift of the aircraft and system from the ground, collects data, and lands again. Multiple lifts within a day are represented by Mission A, B, C, and D. The table below relates each mission to the date collected, the sensor and serial number used, the start/end time and the actual average MSL in meters. The time is shown in GPS seconds of the week.

Boone County

| Mission(s) | Date | Sensor S/N | Start Time GPS sec. | End Time GPS sec. | Actual Avg. MSL (ft) |
|------------|----------------|------------|------------------------|----------------------|-------------------------|
| 180424_A | April 24, 2018 | 5060385 | 224847 | 243452 | 6266 |
| 180425_A | April 25, 2018 | 5060385 | 308366 | 318920 | 6289 |
| 180428_A | April 28, 2018 | 5060385 | 569985 | 571836 | 6168 |

Winnebago County

| Mission(s) | Date | Sensor S/N | Start Time GPS sec. | End Time GPS sec. | Actual Avg. MSL (ft) |
|------------|----------------|------------|------------------------|----------------------|-------------------------|
| 180422_A | April 22, 2018 | 5060385 | 51110 | 73144 | 6266 |
| 180423_A | April 23, 2018 | 5060385 | 136437 | 156944 | 6184 |
| 180423_B | April 23, 2018 | 5060385 | 159206 | 167426 | 6250 |

GNSS / IMU Data

A five-minute INS initialization is conducted on the ground, with the aircraft engines running, prior to flight, to establish fine-alignment of the INS. GPS ambiguities are resolved by flying within ten kilometers of the base stations. During the data collection, the operator recorded information on log sheets which includes weather conditions, lidar operation parameters, and flight line statistics. Near the end of the mission, GPS ambiguities were again resolved by flying within ten kilometers of the base stations to aid in post-processing. Data is sent back to the main office for preliminary processing to check overall quality of GPS / INS data and to ensure sufficient overlap between flight lines. Any problematic data may be re-flown immediately as required.

The airborne GPS data was post-processed using Applanix POSPac Mobile Mapping Suite version 8.x. A fixed-bias carrier phase solution was computed in both the forward and reverse chronological directions. Whenever practical, lidar acquisition was limited to periods when the PDOP was less than 4.0. PDOP indicates satellite geometry relating to position. Generally, PDOP's of 4.0 or less result in a good quality solution, however PDOP's between 4.0 and 5.0 can still yield good results most of the time. PDOP's over 6.0 are of questionable results and PDOP's of over 7.0 usually result in a poor solution. Usually as the number of satellites increase the PDOP decreases. Other quality control checks used for the GPS include analyzing the combined separation of the forward and reverse GPS processing from one base station and the results of the combined separation when processed from two different base stations. An analysis of the number of satellites, present during the flight and data collection times, is also performed.

The GPS trajectory was combined with the raw IMU data and post-processed using POSPac Mobile Mapping Suite version 8.x. The SBET and refined attitude data are then utilized in the LMS Post Processor to compute the laser point-positions – the trajectory is combined with the attitude data and laser range measurements to produce the 3-dimensional coordinates of the mass points. Up to four return values are produced within the Optech LMS processor software for each pulse which ensures the greatest chance of ground returns in a heavily forested area.

GPS Controls

Ground GNSS Base Stations were set up to control the lidar airborne flight lines. In addition, CORS are at times used to further enhance the airborne solution. The ground GNSS Base Stations coordinates were obtained from NGS OPUS solutions. CORS coordinates were obtained from NGS datasheets.

Lidar Calibration – see appendix 1 for a more detailed workflow description

Merrick takes great care to ensure all lidar acquisition missions are carried out in a manner conducive to post-processing an accurate data set. This begins in the flight-planning stage with attention to GPS baseline distances and GPS satellite constellation geometry and outages. Proper AGPS surveying techniques are always followed including pre- and post-mission static initializations. In-air IMU alignments (figure-eights) are performed both before and after on-site collection to ensure proper calibration of the IMU accelerometers and gyros.

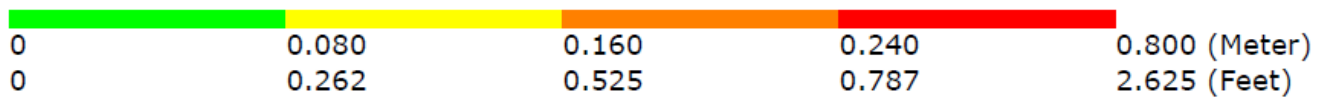
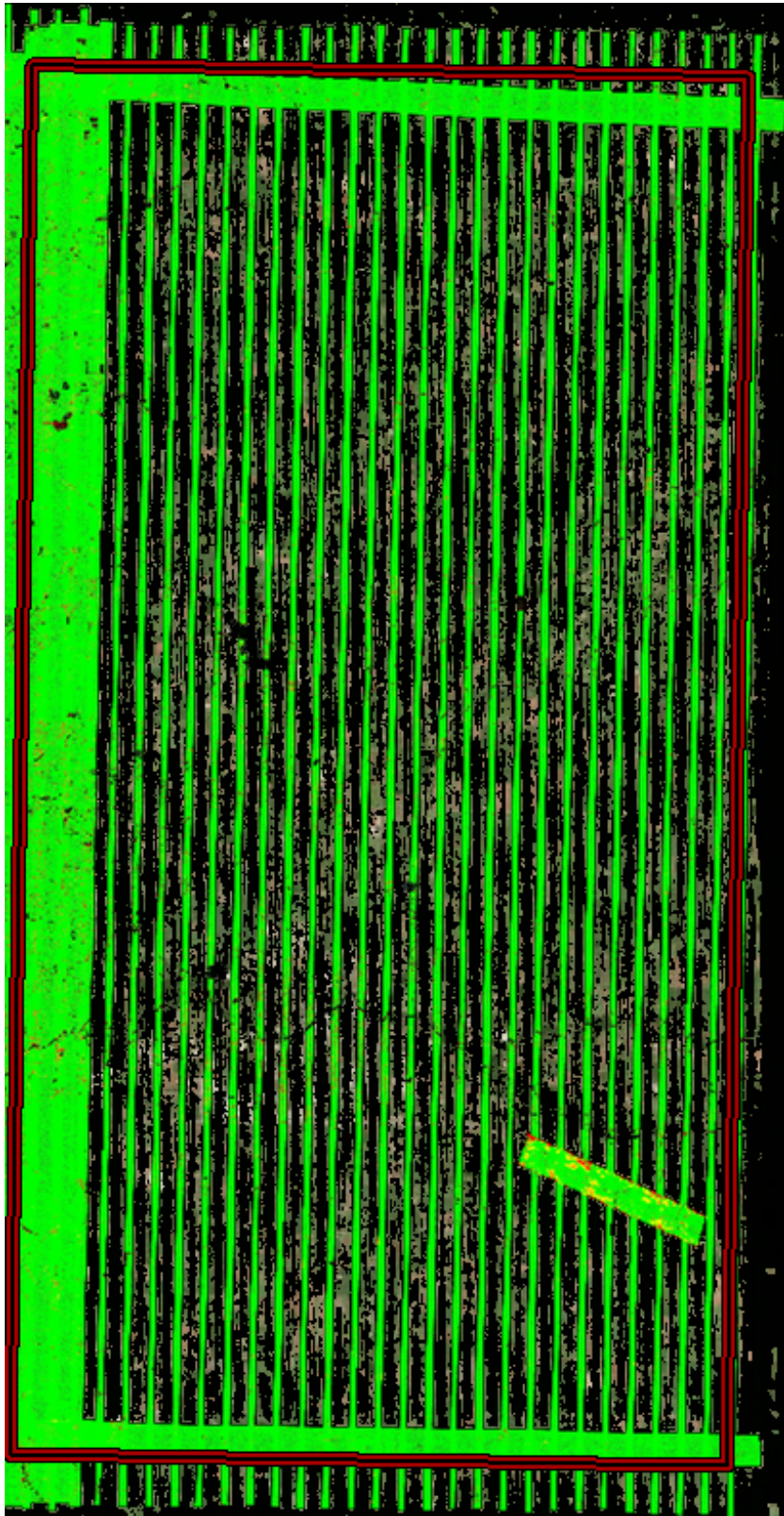
A minimum of one cross-flight is planned throughout the project area across all flightlines and over roadways where possible. The cross-flight provides a common control surface used to remove any vertical discrepancies in the lidar data between flightlines. The cross-flight is critical to ensure flightline ties across the project area. The areas of overlap between flightlines are used to boresight (calibrate) the lidar point cloud to achieve proper flightline to flightline alignment in all three axes. This includes adjustment of both IMU and scanner-related variables such as roll, pitch, heading, timing interval (range), and torsion. Each lidar mission flown is accompanied by a hands-on boresight in the office.

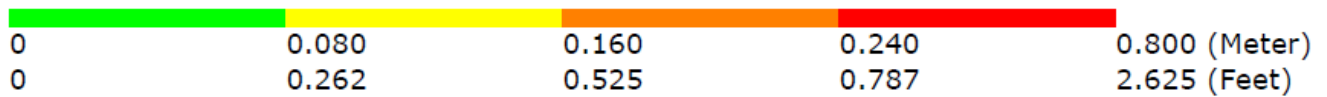
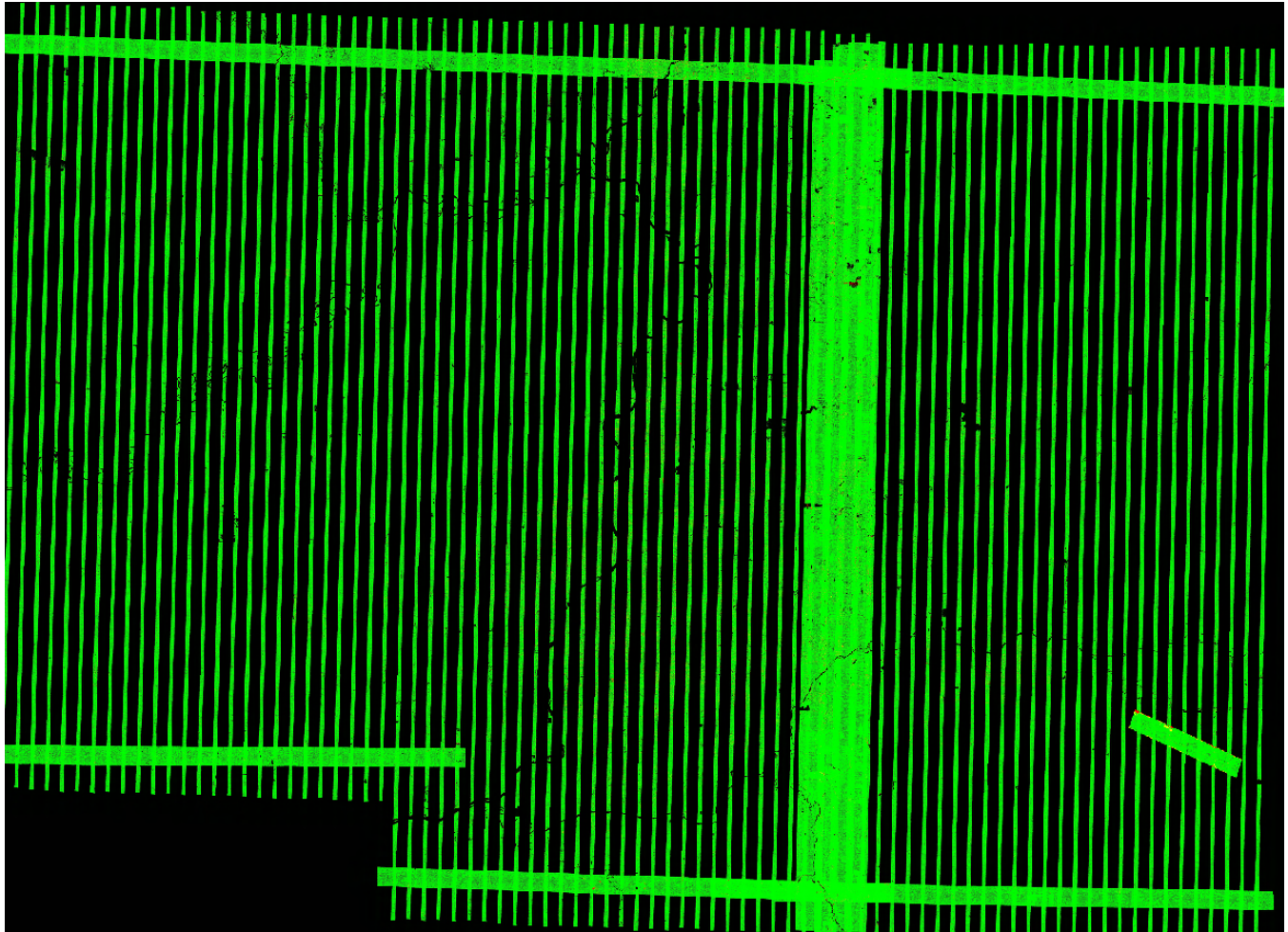
After boresighting is complete a detailed statistical report is generated to check relative and absolute accuracies before filtering of lidar begins.

Relative Accuracy – flight line to flight line

The project representative flight line separation raster examples (below) depict the vertical separation of flight lines by thematically coloring the separation magnitude on a color ramp based on relative distance.

Boone County





Unfiltered Lidar Control Point Report

The following tables illustrate the results of the lidar data compared to the lidar control points post-calibration. The listing is sorted by the Z Error column showing, in ascending order, the vertical difference between the lidar points and the twelve (12) surveyed ground points for Boone Count and seventeen (17) for Winnebago County used for lidar calibration.

Boone County

Project Data Unit: U.S. Survey Foot
 Vertical Accuracy Class tested: 10.0-cm
 Elevation Calculation Method: Interpolated from TIN
 LiDAR Classifications Included: 0-255

Check Points in Report: 12
 Check Points with LiDAR Coverage: 12
 Check Points (NVA): 12
 Check Points (VVA): 0
 Average Vertical Error Reported: -0.023 U.S. Survey Foot
 Maximum (highest) Vertical Error Reported: 0.138 U.S. Survey Foot
 Median Vertical Error Reported: -0.033 U.S. Survey Foot
 Minimum (lowest) Vertical Error Reported: -0.147 U.S. Survey Foot
 Standard deviation of Vertical Error: 0.076 U.S. Survey Foot
 Skewness of Vertical Error: 0.411
 Kurtosis of Vertical Error: -0.024
 Non-vegetated Vertical Accuracy (NVA) RMSE(z): 2.322cm PASS
 Non-vegetated Vertical Accuracy (NVA) at the 95% Confidence Level +/-: 4.551cm PASS
 FGDC/NSSDA Vertical Accuracy at the 95% Confidence Level +/-: 4.551cm
 Non-vegetated Vertical Accuracy (NVA) RMSE(z) (DEM): 2.917cm PASS
 Non-vegetated Vertical Accuracy (NVA) at the 95% Confidence Level +/- (DEM): 5.717cm PASS

This data set was tested to meet ASPRS Positional Accuracy Standard for Digital Geospatial Data (2014) for a 10.0-cm RMSEz Vertical Accuracy Class. Actual NVA accuracy was found to be RMSEz = 2.322cm, equating to +/- 4.551cm at the 95% confidence level.

| Checkpoint Id | Checkpoint X | Checkpoint Y | Coverage | Checkpoint Z | Z from lidar | Z Error |
|---------------|--------------|--------------|----------|--------------|--------------|---------|
| 1701 | 878216.298 | 2051862.416 | Yes | 802.587 | 802.542 | -0.045 |
| 1702 | 844556.751 | 2106307.521 | Yes | 984.168 | 984.118 | -0.05 |
| 1703 | 878294.244 | 2115207.6 | Yes | 994.194 | 994.235 | 0.041 |
| 1704 | 827200.679 | 2073970.266 | Yes | 930.438 | 930.452 | 0.014 |
| 1705 | 880934.847 | 2062311.178 | Yes | 858.895 | 859.033 | 0.138 |
| 1706 | 881174.874 | 2001440.504 | Yes | 839.84 | 839.82 | -0.02 |
| 1707 | 853234.96 | 2027282.822 | Yes | 865.417 | 865.435 | 0.018 |
| 1708 | 839093.207 | 2001447.861 | Yes | 806.218 | 806.145 | -0.073 |
| 1709 | 867665.682 | 2048855.805 | Yes | 813.934 | 813.787 | -0.147 |
| 1710 | 867714.141 | 2060979.104 | Yes | 828.527 | 828.417 | -0.11 |
| 1711 | 841570.664 | 2078251.699 | Yes | 925.934 | 925.872 | -0.062 |
| 1712 | 822424.283 | 2037259.08 | Yes | 759.715 | 759.739 | 0.024 |

Winnebago County

Project Data Unit: U.S. Survey Foot
 Vertical Accuracy Class tested: 10.0-cm
 Elevation Calculation Method: Interpolated from TIN
 LiDAR Classifications Included: 0-255

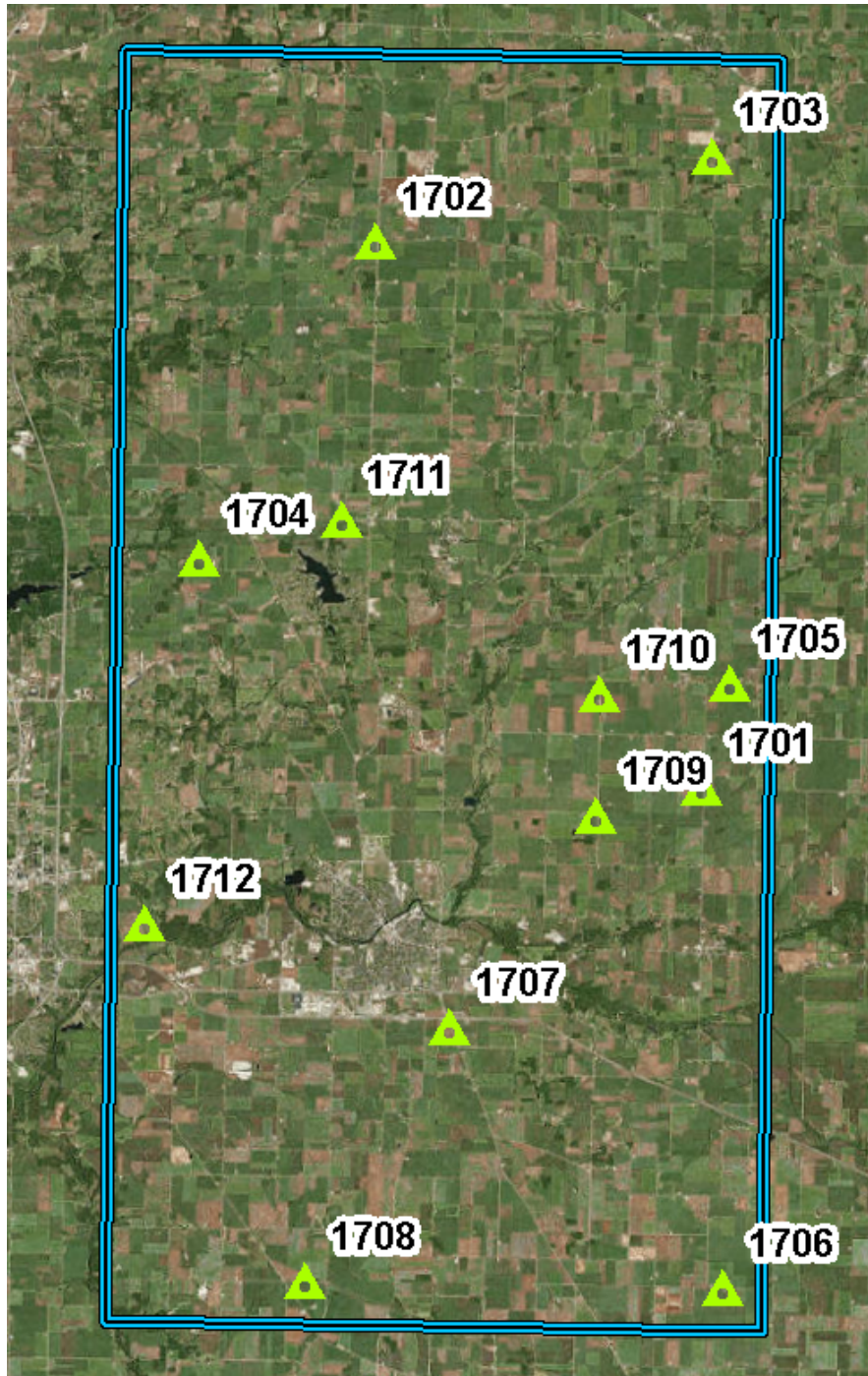
Check Points in Report: 17
 Check Points with LiDAR Coverage: 17
 Check Points (NVA): 17
 Check Points (VVA): 0
 Average Vertical Error Reported: 0.022 U.S. Survey Foot
 Maximum (highest) Vertical Error Reported: 0.192 U.S. Survey Foot
 Median Vertical Error Reported: 0.011 U.S. Survey Foot
 Minimum (lowest) Vertical Error Reported: -0.092 U.S. Survey Foot
 Standard deviation of Vertical Error: 0.081 U.S. Survey Foot
 Skewness of Vertical Error: 0.471
 Kurtosis of Vertical Error: -0.770
 Non-vegetated Vertical Accuracy (NVA) RMSE(z): 2.492cm PASS
 Non-vegetated Vertical Accuracy (NVA) at the 95% Confidence Level +/-: 4.884cm PASS
 FGDC/NSSDA Vertical Accuracy at the 95% Confidence Level +/-: 4.884cm
 Non-vegetated Vertical Accuracy (NVA) RMSE(z) (DEM): 2.750cm PASS
 Non-vegetated Vertical Accuracy (NVA) at the 95% Confidence Level +/- (DEM): 5.391cm PASS

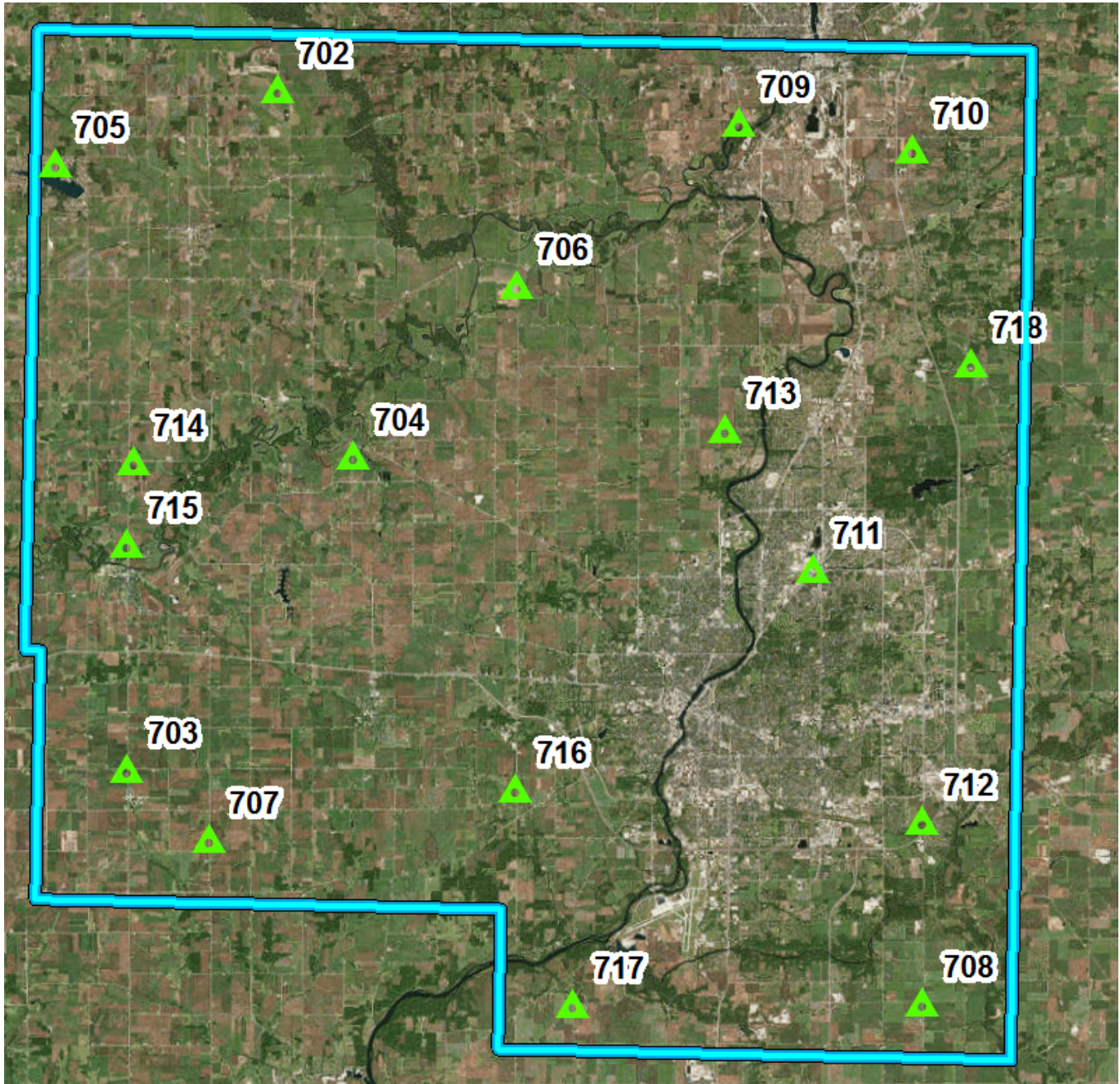
This data set was tested to meet ASPRS Positional Accuracy Standard for Digital Geospatial Data (2014) for a 10.0-cm RMSEz Vertical Accuracy Class. Actual NVA accuracy was found to be RMSEz = 2.492cm, equating to +/- 4.884cm at the 95% confidence level.

| Checkpoint Id | Checkpoint X | Checkpoint Y | Coverage | Checkpoint Z | Z from lidar | Z Error |
|---------------|--------------|--------------|----------|--------------|--------------|---------|
| 702 | 2533110.532 | 2121031.331 | Yes | 765.262 | 765.375 | 0.113 |
| 703 | 2515482.884 | 2033121.806 | Yes | 889.684 | 889.783 | 0.099 |
| 704 | 2543809.592 | 2074195.792 | Yes | 738.991 | 739.067 | 0.076 |
| 705 | 2504566.79 | 2110973.087 | Yes | 854.12 | 854.174 | 0.054 |
| 706 | 2564403.879 | 2096584.617 | Yes | 734.895 | 734.844 | -0.051 |
| 707 | 2526234.772 | 2024355.091 | Yes | 878.654 | 878.846 | 0.192 |
| 708 | 2618573.658 | 2005409.968 | Yes | 772.475 | 772.486 | 0.011 |
| 709 | 2592555.401 | 2118016.771 | Yes | 774.148 | 774.097 | -0.051 |
| 710 | 2614874.282 | 2115081.598 | Yes | 788.445 | 788.414 | -0.031 |
| 711 | 2603308.791 | 2060859.911 | Yes | 751.48 | 751.388 | -0.092 |
| 712 | 2618093.152 | 2028687.891 | Yes | 795.689 | 795.715 | 0.026 |
| 713 | 2591548.646 | 2078643.619 | Yes | 786.295 | 786.238 | -0.057 |
| 714 | 2515481.441 | 2072721.842 | Yes | 852.668 | 852.8 | 0.132 |
| 715 | 2514916.186 | 2062187.265 | Yes | 743.398 | 743.407 | 0.009 |
| 716 | 2565576.381 | 2031710.34 | Yes | 838.115 | 838.074 | -0.041 |
| 717 | 2573588.792 | 2004229.863 | Yes | 714.847 | 714.898 | 0.051 |
| 718 | 2623073.36 | 2087719.046 | Yes | 898.173 | 898.102 | -0.071 |

Lidar Control Point Layout

Boone County





Lidar Filtering and Classification

The lidar filtering process encompasses a series of automated and manual steps to classify the boresighted point cloud data set. Each project represents unique characteristics in terms of cultural features (urbanized vs. rural areas), terrain type and vegetation coverage. These characteristics are thoroughly evaluated at the onset of the project to ensure that the appropriate automated filters are applied and that subsequent manual filtering yields correctly classified data. Data is most often classified by ground and “unclassified”, but specific project applications can include a wide variety of classifications including but not limited to buildings, vegetation, power lines, etc. MARS® software is used for the auto-filtering, manual filtering and QC of the classified data.

Merrick used the ASPRS LAS Specification Version 1.4 – R13, 15 July 2013, Point Data Record Format 6 for this project and classified the lidar point cloud in accordance with the following classification classes and bitflags. The following outlines project specific requirements.

- Class 1 = Unclassified
- Class 2 = Bare-earth Ground
- Class 3 = Low Vegetation [0.5-5 feet]
- Class 4 = Medium Vegetation [5-20 feet]
- Class 5 = High Vegetation [>20 feet]
- Class 6 = Buildings
- Class 7 = Low point (noise)
- Class 9 = Water
- Class 10 = Ignored ground (near a breakline)
- Class 17 = Bridge decks
- Class 18 = High noise
- Bitflags
 - Withheld: Within the LAS file specification, a single bit flag indicating that the associated lidar point is geometrically anomalous or unreliable and should be ignored for all normal processes.
 - Model Keypoints: A thinned version of the ground while still retaining the terrain definition at a 2ft spacing plus or minus 0.2ft.

Merrick has developed several customized automated filters that are applied to the lidar data set based on project specifications, terrain, and vegetation characteristics. A filtering macro, which may contain one or more filtering algorithms, is executed to derive LAS files separated into the different classification groups as defined in the ASPRS classification table. The macros are tested in several portions of the project area to verify the appropriateness of the filters. Often, there is a combination of several filter macros that optimize the filtering based on the unique characteristics of the project. Automatic filtering generally yields a ground surface that is 85-90% valid, so additional editing (hand-filtering) is required to produce a more robust ground surface.

Lidar data is next taken into a graphic environment using MARS® to manually re-classify (or hand-filter) “noise” and other features that may remain in the ground classification after auto filter. A cross-section of the post auto-filtered surface is viewed to assist in the reclassification of non-ground data artifacts. The following is an example of re-classification of the non-ground points (elevated features) that need to be excluded from the true ground surface. Certain features such as berms, hilltops, cliffs and other features may have been aggressively auto-filtered and points will need to be re-classified into the ground classification. Data in the profile view displays non-ground (Unclassified, class 1) in grey and ground in brown/tan (Class 2). In figure 1, a small building was not auto-filtered and needs to be manually re-classified. Note that figure 2 has the building points reclassified to unclassified from the true ground surface.

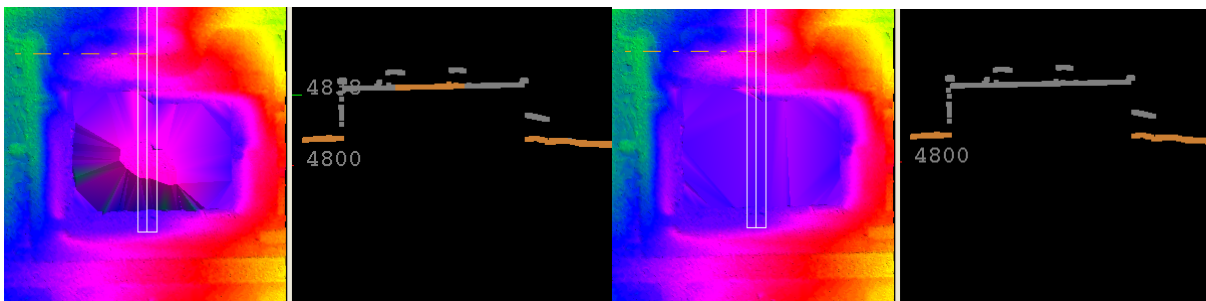


Figure 1

Figure 2

A combination of automated and semi-automated routines to classify buildings and vegetation. We expect that the classified buildings will meet a filtering criterion in the range of 90-95%.

At this point, individual lidar points from the original point cloud have now been parsed into separate classifications.

Filtered Lidar Checkpoint Report

After hand-filtering has been completed and quality checked, a Checkpoint Report is generated to validate that the accuracy of the ground surface is within the defined accuracy specifications. Each surveyed ground check point is compared to the lidar surface by interpolating an elevation from a Triangulated Irregular Network (TIN) of the surface. The MARS® derived report provides an in-depth statistical report, including an RMSE of the vertical errors; a primary component in most accuracy standards and a statistically valid assessment of the overall accuracy of the ground surface.

The below lidar check point reports provide statistics for the ground survey points used to validate the final filtered lidar surface. Please note that all input data per project specification are in U.S. Survey Foot however, UGSS vertical statistic reporting guidelines require reporting in meters so the below results are in meters – units are converted on the fly during the MARS® statistical processing.

Boone County

Units: Meter (/US Survey Feet)

Vertical Accuracy Class tested: 10-cm

| | |
|--|------------------|
| Check Points in defined project area (DPA): | 40 |
| Check Points with Lidar Coverage | 40 |
| Check Points with Lidar Coverage (NVA) | 25 |
| Check Points with Lidar Coverage (VVA) | 15 |
| Average Z Error (NVA) | -0.014/-0.047 |
| Maximum Z Error (NVA) | 0.030/0.099 |
| Median Z Error (NVA) | -0.009/-0.029 |
| Minimum Z Error (NVA) | -0.047/-0.155 |
| Standard deviation of Vertical Error (NVA) | 0.020/0.065 |
| Skewness of Vertical Error (NVA) | 0.346 |
| Kurtosis of Vertical Error (NVA) | -0.398 |
| Non-vegetated Vertical Accuracy (NVA) RMSE(z) ¹ | 0.024/0.079 PASS |
| Non-vegetated Vertical Accuracy (NVA) at the 95% Confidence Level +/- ¹ | 0.047/0.155 PASS |
| FGDC/NSSDA Vertical Accuracy at the 95% Confidence Level +/- | 0.047/0.155 |
| Non-vegetated Vertical Accuracy (NVA) RMSE(z) (DEM) ² | 0.025/0.082 PASS |
| Non-vegetated Vertical Accuracy (NVA) at the 95% Confidence Level (DEM) +/- ² | 0.049/0.160 PASS |
| Vegetated Vertical Accuracy (VVA) at the 95th Percentile (DEM) +/- ² | 0.059/0.193 PASS |

This data set was tested to meet ASPRS Positional Accuracy Standard for Digital Geospatial Data (2014) for a 10-cm RMSEz Vertical Accuracy Class. Actual NVA accuracy was found to be RMSEz = 2.411cm, equating to +/- 4.725cm at the 95% confidence level. Actual VVA accuracy was found to be +/- 5.882cm at the 95th percentile.

¹ This value is calculated from TIN-based testing of the raw swath lidar point cloud data.

² This value is calculated from RAM-based grid testing of the classified tiled lidar data. The grid cells are sized according to the Quality Level selected, and are defined in the USGS NGP Lidar Base Specification Version 1.2 (page 15, Table 7).

Units: U.S. Survey Foot

| Check Point Id | Check Point X | Check Point Y | Coverage | Check Point Z | Z from Lidar | Z Error | NVA or VVA |
|----------------|---------------|---------------|----------|---------------|--------------|---------|------------|
| 1501 | 878215.556 | 2053022.725 | 808.401 | TRUE | 808.429 | 0.028 | NVA |
| 1502 | 841919.122 | 2106072.131 | 965.819 | TRUE | 965.664 | -0.155 | NVA |

| | | | | | | | |
|------|------------|-------------|---------|------|---------|--------|-----|
| 1503 | 883451.347 | 2112564.366 | 943.124 | TRUE | 943.124 | 0.000 | NVA |
| 1504 | 829600.427 | 2072895.21 | 934.876 | TRUE | 934.746 | -0.130 | NVA |
| 1505 | 883595.626 | 2067556.377 | 838.479 | TRUE | 838.454 | -0.025 | NVA |
| 1506 | 883284.948 | 2001422.943 | 842.698 | TRUE | 842.776 | 0.078 | NVA |
| 1507 | 853991.475 | 2025362.855 | 850.475 | TRUE | 850.360 | -0.115 | NVA |
| 1508 | 841068.65 | 2002103.238 | 801.108 | TRUE | 801.008 | -0.100 | NVA |
| 1509 | 867663.873 | 2049828.139 | 832.046 | TRUE | 832.026 | -0.020 | NVA |
| 1510 | 867721.37 | 2065028.708 | 818.783 | TRUE | 818.682 | -0.101 | NVA |
| 1511 | 843116.661 | 2078264.15 | 917.993 | TRUE | 917.869 | -0.124 | NVA |
| 1512 | 822953.243 | 2036943.158 | 758.035 | TRUE | 758.134 | 0.099 | NVA |
| 1513 | 858103.282 | 2122252.256 | 973.447 | TRUE | 973.420 | -0.027 | NVA |
| 1514 | 869813.728 | 2087485.82 | 899.466 | TRUE | 899.429 | -0.037 | NVA |
| 1515 | 841258.475 | 2023072.853 | 806.963 | TRUE | 806.959 | -0.004 | NVA |
| 1516 | 832953.347 | 2099366.703 | 941.048 | TRUE | 940.917 | -0.131 | NVA |
| 1517 | 878156.921 | 2029357.682 | 786.329 | TRUE | 786.232 | -0.097 | NVA |
| 1518 | 835603.539 | 2051291.112 | 810.601 | TRUE | 810.581 | -0.020 | NVA |
| 1519 | 832887.949 | 2123154.857 | 924.778 | TRUE | 924.709 | -0.069 | NVA |
| 1520 | 855877.758 | 2072983.811 | 845.807 | TRUE | 845.737 | -0.070 | NVA |
| 1521 | 830519.917 | 2011994.234 | 844.875 | TRUE | 844.846 | -0.029 | NVA |
| 1522 | 867142.977 | 1999821.586 | 856.848 | TRUE | 856.755 | -0.093 | NVA |
| 1523 | 865114.13 | 2014059.548 | 826.128 | TRUE | 826.109 | -0.019 | NVA |
| 1524 | 844318.754 | 2088873.308 | 953.813 | TRUE | 953.790 | -0.023 | NVA |
| 1525 | 830436.917 | 1998906.614 | 788.841 | TRUE | 788.850 | 0.009 | NVA |
| 1601 | 878148.451 | 2054300.998 | 809.727 | TRUE | 809.813 | 0.086 | VVA |
| 1602 | 841555.987 | 2106028.965 | 969.287 | TRUE | 969.254 | -0.033 | VVA |
| 1603 | 881548.145 | 2112628.859 | 954.247 | TRUE | 954.138 | -0.109 | VVA |
| 1604 | 830377.278 | 2072848.457 | 936.049 | TRUE | 936.004 | -0.045 | VVA |
| 1605 | 883553.799 | 2066856.987 | 834.303 | TRUE | 834.352 | 0.049 | VVA |
| 1606 | 882611.311 | 2001387.337 | 842.144 | TRUE | 842.144 | 0.000 | VVA |
| 1607 | 855927.898 | 2025308.872 | 860.7 | TRUE | 860.722 | 0.022 | VVA |
| 1608 | 840963.534 | 2001254.217 | 794.98 | TRUE | 794.851 | -0.129 | VVA |
| 1609 | 867714.411 | 2050471.909 | 837.833 | TRUE | 837.806 | -0.027 | VVA |
| 1610 | 866402.796 | 2064983.386 | 816.945 | TRUE | 816.792 | -0.153 | VVA |
| 1611 | 842878.39 | 2078382.03 | 920.882 | TRUE | 920.642 | -0.240 | VVA |
| 1612 | 822606.523 | 2037285.291 | 757.96 | TRUE | 757.963 | 0.003 | VVA |
| 1613 | 861170.57 | 2122152.08 | 960.083 | TRUE | 959.994 | -0.089 | VVA |
| 1614 | 870494.394 | 2087559.907 | 899.528 | TRUE | 899.513 | -0.015 | VVA |
| 1615 | 841215.927 | 2023774.914 | 794.26 | TRUE | 794.233 | -0.027 | VVA |

Winnebago County

Units: Meter (/US Survey Feet)

Vertical Accuracy Class tested: 10-cm

| | |
|--|------------------|
| Check Points in defined project area (DPA): | 60 |
| Check Points with Lidar Coverage | 60 |
| Check Points with Lidar Coverage (NVA) | 35 |
| Check Points with Lidar Coverage (VVA) | 25 |
| Average Z Error (NVA) | 0.006/0.019 |
| Maximum Z Error (NVA) | 0.052/0.171 |
| Median Z Error (NVA) | 0.005/0.017 |
| Minimum Z Error (NVA) | -0.066/-0.217 |
| Standard deviation of Vertical Error (NVA) | 0.027/0.087 |
| Skewness of Vertical Error (NVA) | -0.379 |
| Kurtosis of Vertical Error (NVA) | -0.062 |
| Non-vegetated Vertical Accuracy (NVA) RMSE(z) ¹ | 0.027/0.088 PASS |
| Non-vegetated Vertical Accuracy (NVA) at the 95% Confidence Level +/- ¹ | 0.052/0.172 PASS |
| FGDC/NSSDA Vertical Accuracy at the 95% Confidence Level +/- | 0.052/0.172 |
| Non-vegetated Vertical Accuracy (NVA) RMSE(z) (DEM) ² | 0.028/0.091 PASS |
| Non-vegetated Vertical Accuracy (NVA) at the 95% Confidence Level (DEM) +/- ² | 0.054/0.178 PASS |
| Vegetated Vertical Accuracy (VVA) at the 95th Percentile (DEM) +/- ² | 0.076/0.250 PASS |

This data set was tested to meet ASPRS Positional Accuracy Standard for Digital Geospatial Data (2014) for a 10-cm RMSEz Vertical Accuracy Class. Actual NVA accuracy was found to be RMSEz = 2.674cm, equating to +/- 5.241cm at the 95% confidence level. Actual VVA accuracy was found to be +/- 7.616cm at the 95th percentile.

¹ This value is calculated from TIN-based testing of the raw swath lidar point cloud data.

² This value is calculated from RAM-based grid testing of the classified tiled lidar data. The grid cells are sized according to the Quality Level selected, and are defined in the USGS NGP Lidar Base Specification Version 1.2 (page 15, Table 7).

Units: U.S. Survey Foot

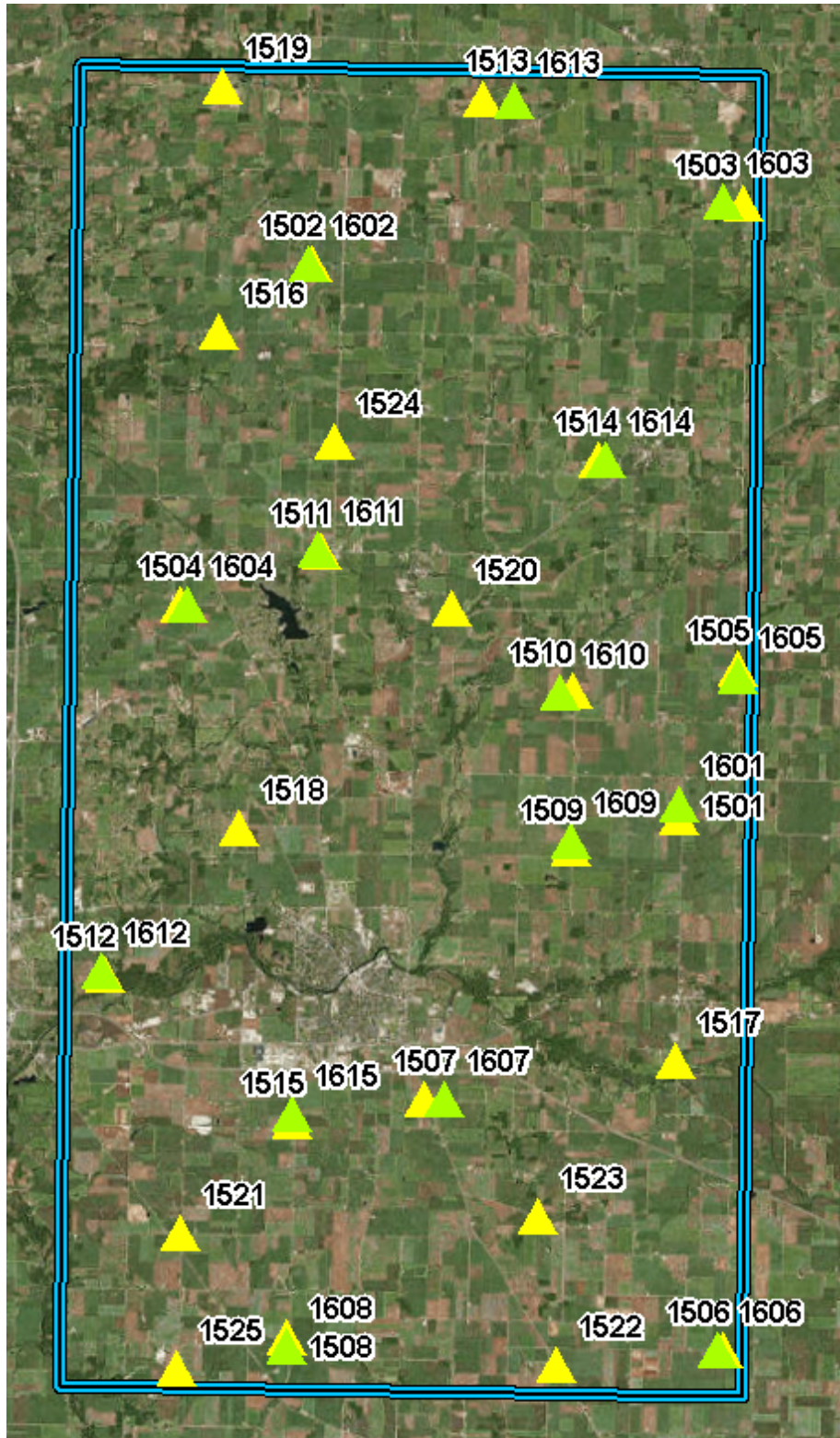
| Check Point Id | Check Point X | Check Point Y | Coverage | Check Point Z | Z from Lidar | Z Error | NVA or VVA |
|----------------|---------------|---------------|----------|---------------|--------------|---------|------------|
| 501 | 2622486.132 | 2070265.592 | 896.015 | TRUE | 896.056 | 0.041 | NVA |
| 502 | 2533281.047 | 2120278.251 | 768.275 | TRUE | 768.227 | -0.048 | NVA |
| 503 | 2510239.805 | 2032996.41 | 851.95 | TRUE | 852.101 | 0.151 | NVA |
| 504 | 2544606.091 | 2075161.772 | 738.575 | TRUE | 738.677 | 0.102 | NVA |
| 505 | 2505292.309 | 2111425.513 | 870.154 | TRUE | 870.223 | 0.069 | NVA |
| 506 | 2564362.667 | 2099051.392 | 731.606 | TRUE | 731.551 | -0.055 | NVA |
| 507 | 2526151.529 | 2028058.413 | 898.068 | TRUE | 898.239 | 0.171 | NVA |
| 508 | 2597392.643 | 2004788.251 | 744.967 | TRUE | 745.058 | 0.091 | NVA |
| 509 | 2593339.043 | 2118425.727 | 776.574 | TRUE | 776.587 | 0.013 | NVA |
| 510 | 2613539.16 | 2116520.534 | 783.817 | TRUE | 783.836 | 0.019 | NVA |
| 511 | 2603540.108 | 2061147.153 | 752.885 | TRUE | 752.858 | -0.027 | NVA |
| 512 | 2618093.668 | 2029778.034 | 788.655 | TRUE | 788.644 | -0.011 | NVA |
| 513 | 2591238.703 | 2077873.532 | 795.934 | TRUE | 795.911 | -0.023 | NVA |
| 514 | 2514772.046 | 2073443.42 | 873.997 | TRUE | 874.129 | 0.132 | NVA |
| 515 | 2514975.432 | 2059856.629 | 749.665 | TRUE | 749.787 | 0.122 | NVA |
| 516 | 2567054.845 | 2033172.673 | 813.475 | TRUE | 813.445 | -0.030 | NVA |
| 517 | 2574010.237 | 1998422.361 | 733.228 | TRUE | 733.309 | 0.081 | NVA |
| 518 | 2622169.587 | 2088851.309 | 873.1 | TRUE | 873.044 | -0.056 | NVA |

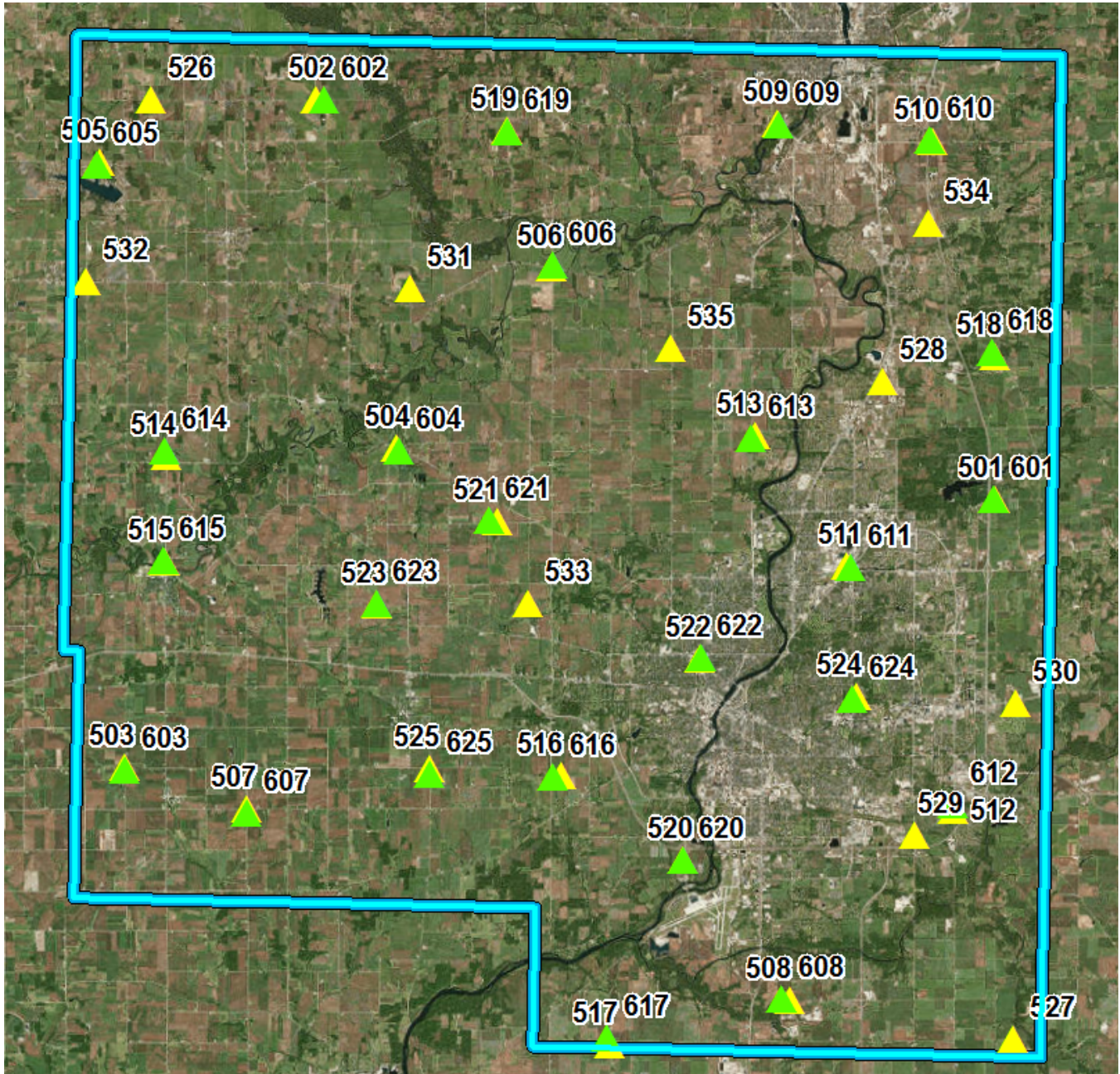
| | | | | | | | |
|-----|-------------|-------------|---------|------|---------|--------|-----|
| 519 | 2558251.031 | 2116740.245 | 837.524 | TRUE | 837.428 | -0.096 | NVA |
| 520 | 2583097.017 | 2022510.215 | 727.656 | TRUE | 727.673 | 0.017 | NVA |
| 521 | 2558090.637 | 2065906.875 | 867.761 | TRUE | 867.854 | 0.093 | NVA |
| 522 | 2584656.088 | 2048761.982 | 729.424 | TRUE | 729.303 | -0.121 | NVA |
| 523 | 2542581.309 | 2054776.004 | 887.39 | TRUE | 887.379 | -0.011 | NVA |
| 524 | 2605054.583 | 2044248.579 | 798.234 | TRUE | 798.159 | -0.075 | NVA |
| 525 | 2549824.885 | 2033823.784 | 893.63 | TRUE | 893.688 | 0.058 | NVA |
| 526 | 2511898.749 | 2119742.456 | 862.539 | TRUE | 862.688 | 0.149 | NVA |
| 527 | 2626387.155 | 2000329.989 | 752.746 | TRUE | 752.798 | 0.052 | NVA |
| 528 | 2607704.408 | 2085220.18 | 739.575 | TRUE | 739.358 | -0.217 | NVA |
| 529 | 2613008.176 | 2026422.348 | 814.846 | TRUE | 814.882 | 0.036 | NVA |
| 530 | 2625877.61 | 2043915.351 | 848.905 | TRUE | 848.901 | -0.004 | NVA |
| 531 | 2545999.528 | 2096011.714 | 758.937 | TRUE | 759.025 | 0.088 | NVA |
| 532 | 2503886.893 | 2095926.236 | 938.64 | TRUE | 938.727 | 0.087 | NVA |
| 533 | 2562256.394 | 2055465.9 | 793.441 | TRUE | 793.445 | 0.004 | NVA |
| 534 | 2613091.665 | 2105901.327 | 779.946 | TRUE | 779.887 | -0.059 | NVA |
| 535 | 2580098.892 | 2089001.411 | 837.303 | TRUE | 837.210 | -0.093 | NVA |
| 601 | 2622384.025 | 2070204.817 | 898.693 | TRUE | 898.703 | 0.010 | VVA |
| 602 | 2534309.345 | 2120155.883 | 754.858 | TRUE | 754.964 | 0.106 | VVA |
| 603 | 2510299.264 | 2032730.844 | 849.426 | TRUE | 849.558 | 0.132 | VVA |
| 604 | 2545070.738 | 2074888.717 | 738.044 | TRUE | 738.228 | 0.184 | VVA |
| 605 | 2504947.374 | 2111113.655 | 835.489 | TRUE | 835.478 | -0.011 | VVA |
| 606 | 2564429.142 | 2099392.569 | 730.338 | TRUE | 730.323 | -0.015 | VVA |
| 607 | 2526219.203 | 2027457.847 | 884.616 | TRUE | 884.831 | 0.215 | VVA |
| 608 | 2596255.812 | 2004800.536 | 750.084 | TRUE | 750.162 | 0.078 | VVA |
| 609 | 2593364.78 | 2118279.169 | 778.24 | TRUE | 778.226 | -0.014 | VVA |
| 610 | 2613121.235 | 2116616.971 | 781.944 | TRUE | 781.917 | -0.027 | VVA |
| 611 | 2604093.565 | 2061113.689 | 760.005 | TRUE | 759.936 | -0.069 | VVA |
| 612 | 2618014.828 | 2030488.28 | 774.471 | TRUE | 775.093 | 0.622 | VVA |
| 613 | 2590805.359 | 2077436.34 | 804.166 | TRUE | 804.265 | 0.099 | VVA |
| 614 | 2514679.17 | 2074312.356 | 855.094 | TRUE | 855.227 | 0.133 | VVA |
| 615 | 2514686.944 | 2059994.821 | 741.851 | TRUE | 741.933 | 0.082 | VVA |
| 616 | 2565921.943 | 2033084.024 | 836.448 | TRUE | 836.405 | -0.043 | VVA |
| 617 | 2573744.587 | 1999308.632 | 720.035 | TRUE | 720.055 | 0.020 | VVA |
| 618 | 2621709.557 | 2089328.054 | 856.202 | TRUE | 856.102 | -0.100 | VVA |
| 619 | 2558171.41 | 2116589.162 | 833.66 | TRUE | 833.726 | 0.066 | VVA |
| 620 | 2583018.699 | 2022561.222 | 726.854 | TRUE | 726.804 | -0.050 | VVA |
| 621 | 2556863.316 | 2066096.87 | 840.63 | TRUE | 840.726 | 0.096 | VVA |
| 622 | 2584788.997 | 2048845.495 | 730.302 | TRUE | 730.238 | -0.064 | VVA |
| 623 | 2542511.865 | 2055035.218 | 885.074 | TRUE | 885.080 | 0.006 | VVA |
| 624 | 2604613.222 | 2043949.384 | 812.229 | TRUE | 812.092 | -0.137 | VVA |
| 625 | 2549887.78 | 2032976.189 | 912.796 | TRUE | 912.979 | 0.183 | VVA |

Lidar Check Point Layout

- Yellow = NVA
- Green = VVA

Boone County





Hydro-flattening Breakline Collection

Hydro- flattening breaklines are captured per the USGS National Geospatial Program Lidar Base Specification Version 1.2. Final hydro-flattened breaklines features are appropriately turned into polygons (flat elevations) and polylines (decreasing by elevation) and are used to reclassify ground points in water to Water (Class 9). The lidar points around the breaklines are reclassified to Ignored Ground (Class 10) based on predetermined buffer.

Linear hydrographic features

To collect hydrographic features, Merrick-Surdex JV uses a methodology that directly interacts with the lidar bare-earth data to collect drainage breaklines. To determine the alignment of a drainageway, the technician first views the area as a TIN of bare-earth points using a color ramp to depict varying elevations. In areas of

extremely flat terrain, the technician may need to determine the direction of flow based on measuring lidar bare-earth points at each end of the drain. The operator will then use the color ramped TIN to digitize the drainage in 2D with the elevation being attributed directly from the bare-earth LAS data. MARS® software has the capability of “flipping” views between the elevation TIN, Intensity and imagery, as necessary, to further assist in the determination of the drainage. All drainage breaklines are collected in a downhill direction. For each point collected, the software uses a five-foot (5’) search radius to identify the lowest point within that proximity. Within each radius, if a bare-earth point is not found that is lower than the previous point, the elevation for subsequent point remains the same as the previous point. This forces the drain to always flow in a downhill direction. Waterbodies that are embedded along a drainageway are validated to ensure consistency with the downhill direction of flow.

This methodology may differ from those of other vendors in that Merrick-Surdex JV relies on the bare-earth data to attribute breakline elevations. As a result of our methodology, there is no mismatch between lidar bare-earth data and breaklines that might otherwise be collected in stereo 3D as a separate process. This is particularly important in densely vegetated areas where breaklines collected in 3D from imagery will most likely not match (either horizontally or vertically), the more reliable lidar bare-earth data.

Merrick-Surdex JV has the capability of “draping” 2D breaklines to a bare-earth elevation model to attribute the “z” as opposed to the forced downhill attribution methodology described above. However, the problem with this process is the “pooling” effect or depressions along the drainageway caused by a lack of consistent penetration in densely vegetated areas.

Criteria of linear hydrographic breaklines are as follows:

- Linear hydrographic features (e.g., visible streams, rivers, shorelines, canals, etc.) greater than one hundred feet (100’) wide will be captured as a double-lined polygon
 - linear hydrographic features must be flat and level bank-to-bank (perpendicular to the apparent flow centerline) with gradient following the immediately surrounding terrain
 - water surface edge must be at or just below the immediately surrounding terrain
 - streams should break at road crossings (e.g., culverts), and streams and rivers should not break at bridges

Waterbodies

Waterbodies are digitized from the color ramped TIN, similar to the process described above. The elevation attribute is determined as the technician collects the hydro feature by using the lowest bare-earth point within the polygon.

Criteria of waterbody breaklines are as follows:

- Waterbodies (e.g., lakes, ponds, reservoirs) greater than two (2) acres in size are surrounded by a water breakline (i.e., closed polygon)
 - waterbodies must be flat and level with a single elevation for every bank vertex
 - water surface edge must be at or just below the immediately surrounding terrain
 - long impoundments, such as reservoirs or inlets, whose water surface elevations drop when moving downstream should be treated as rivers

Color cycles provide a clear indication of where breaklines are to be collected, especially hydrographic breaklines. Figure 3 demonstrates no breaklines, where Figure 4 is breakline enforced displayed using color cycles within the MARS® software environment.

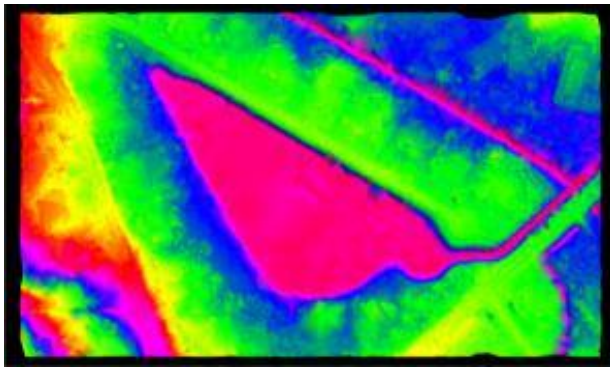


Figure 3

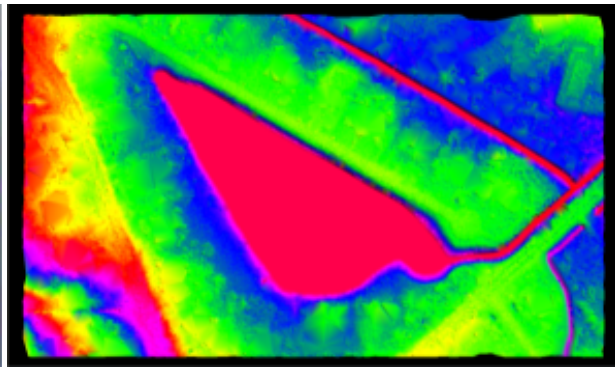


Figure 4

List of Deliverables

- Raw lidar point cloud
 - Fully compliant ASPRS LAS 1.4
 - Calibrated
 - By swath
 - Intensity values normalized (rescaled) to 16-bit
 - FGDC-compliant metadata
- Classified lidar point cloud
 - Fully compliant ASPRS LAS 1.4, point record format 6
 - By tile
 - Intensity values normalized (rescaled) to 16-bit
 - FGDC-compliant metadata
- Bare-earth DEM
 - 1m cell size 32-bit floating point raster in ERDAS IMG format
 - Bare-earth (hydro-flattened)
 - Culverts will not be removed from the DEMs
 - Bridges will be removed from the DEMs
 - By tile and by County
 - FGDC-compliant metadata
- Hydro-flattened breaklines
 - Project-wide Esri feature class(es) for insertion into file geodatabase
 - FGDC-compliant metadata
- Intensity Images
 - 1m cell size 8-bit, 256 color gray scale in ERDAS IMG format
 - By tile and by County
 - FGDC-compliant metadata
- Control
 - Survey report
 - Esri shapefile format
 - FGDC-compliant metadata
- FGDC-compliant metadata (project level)
- Detailed lidar Mapping / Project Report

Appendix 1

Following is a more detailed lidar calibration workflow description.

LIDAR CALIBRATION AND BLOCK LAS OUTPUT

Note: All figures represented on the following pages are for general illustration purposes, and are not examples derived from the project.

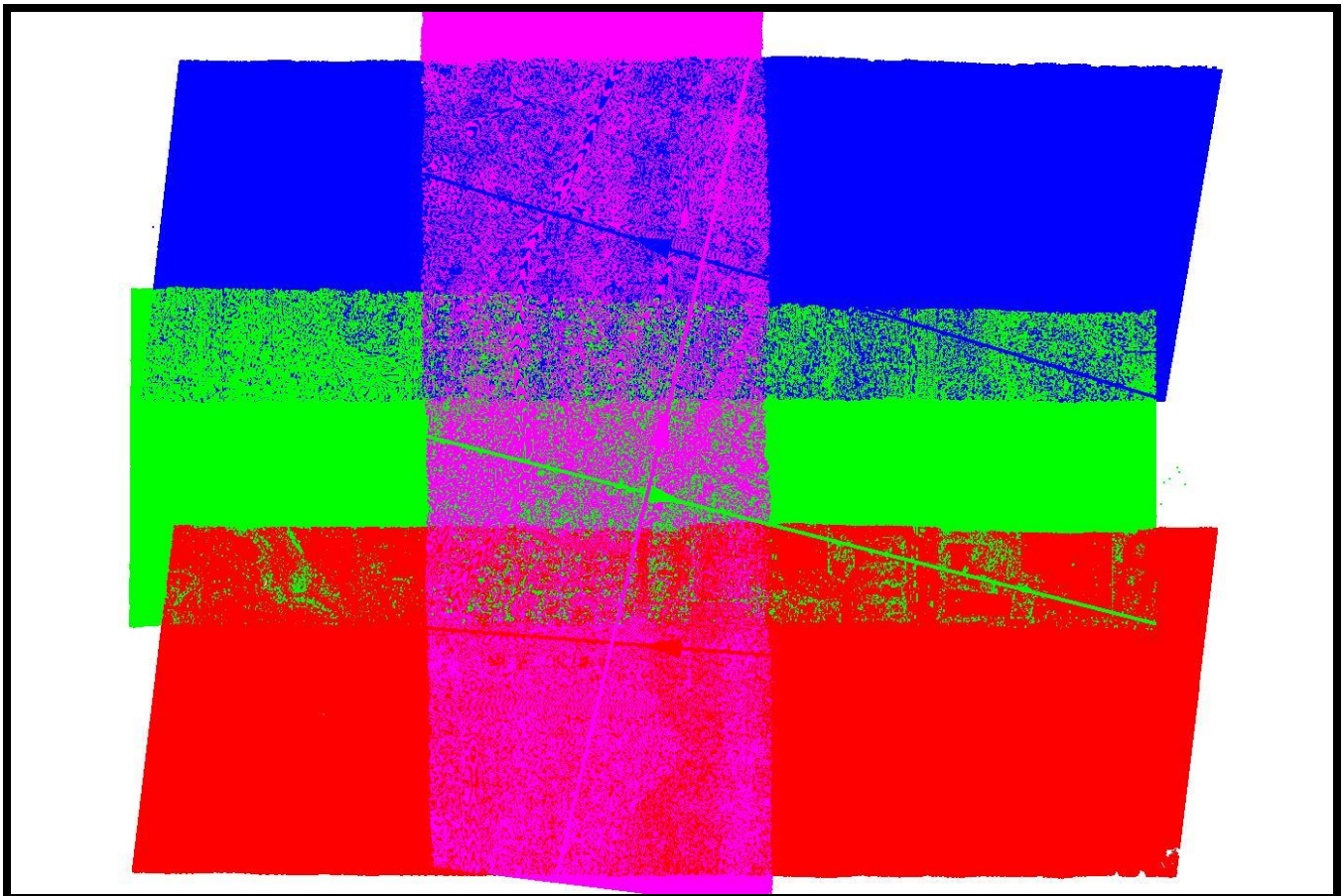
Initial Processing

Lidar data is output as LAS point data using Optech's Lidar Mapping Suite (LMS). LMS matches ground and roof planes plus roof lines to self-calibrate and correct system biases. These biases occur within the hardware of the laser scanning systems, within the Inertial Measurement Unit (IMU) and because of environmental conditions which affect the refraction of light. The systemic biases that are corrected for include scale, roll, pitch, and heading.

In addition to the self-calibration mode LMS runs a "production" mode which applies the self-calibration parameters and then analyzes each individual flight line and applies small adjustments to each line to tie overlapping lidar points even more tightly together.

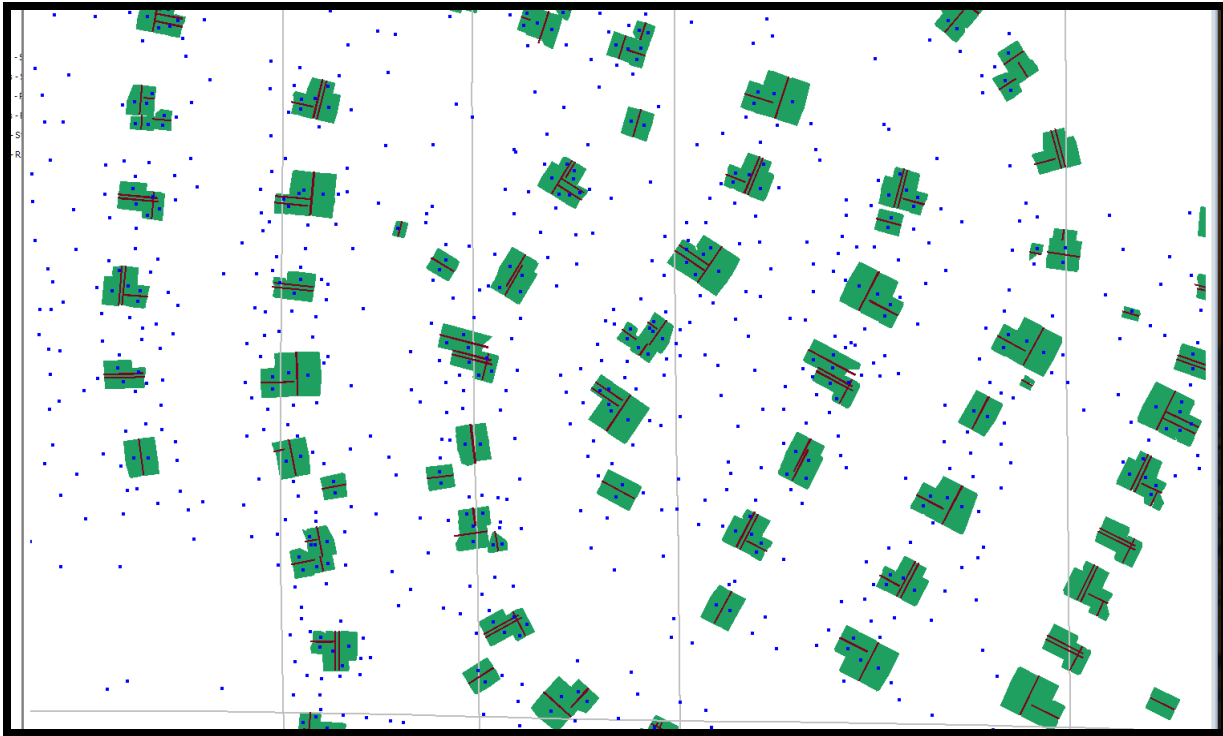
Boresight Self-Calibration Processing Procedures

An LMS boresight calibration is performed on an as-needed basis to correct scale, roll, pitch and heading biases. A minimum of three overlapping flights are flown in opposing directions with one cross flight.



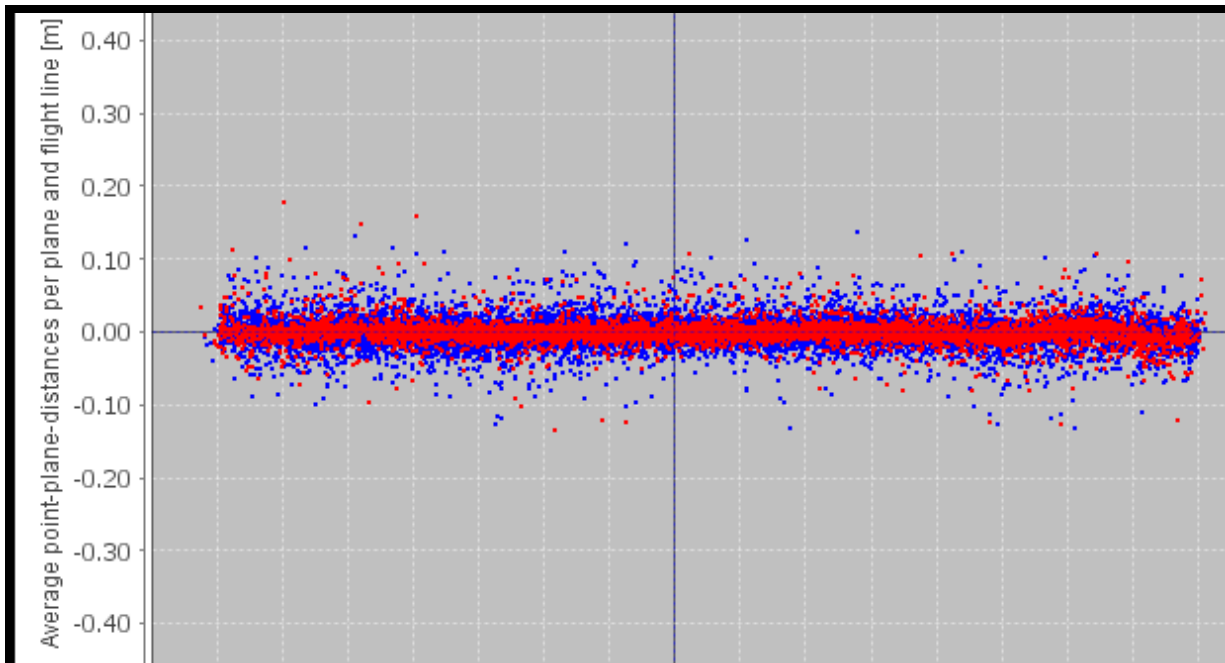
The Boresighting module frees scan angle scale, scan angle lag, XYZ boresight corrections and elevation position corrections while locking scan angle offset and XY position corrections.

The picked calibration site will have a good distribution of buildings for the self-calibration software to match ground planes, roof planes and roof lines.

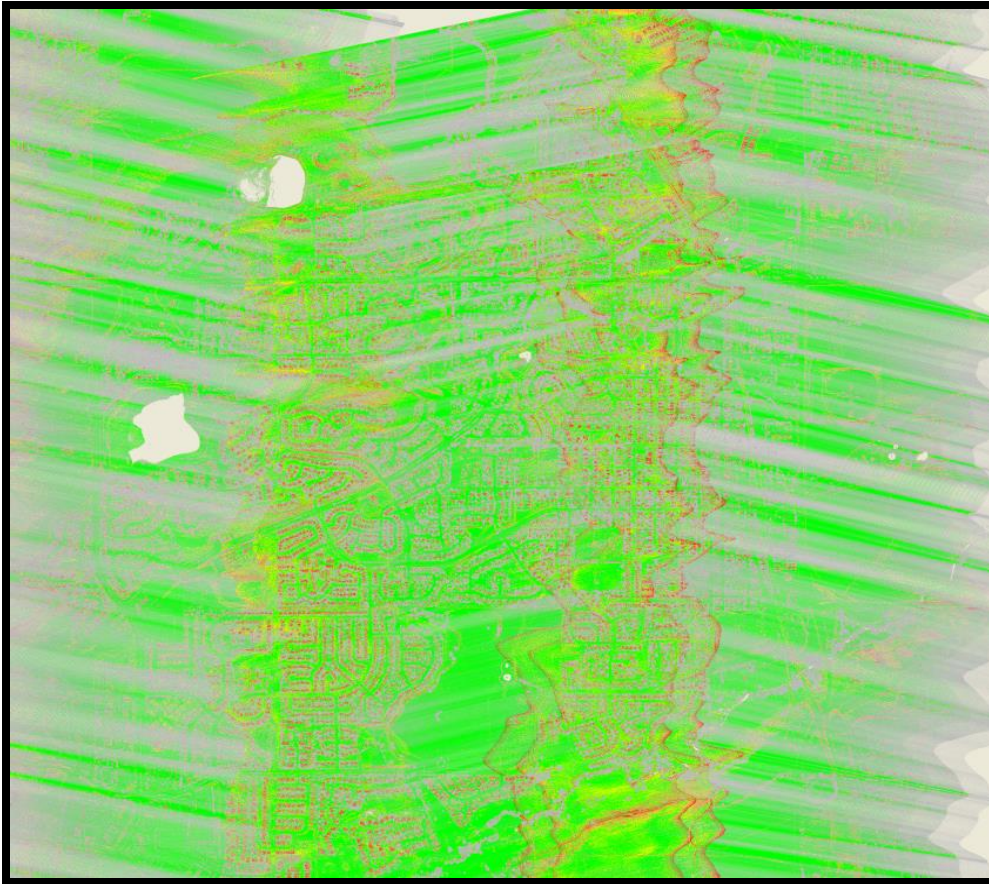


At the conclusion of the self-calibration run the data is quality checked with LMS plots

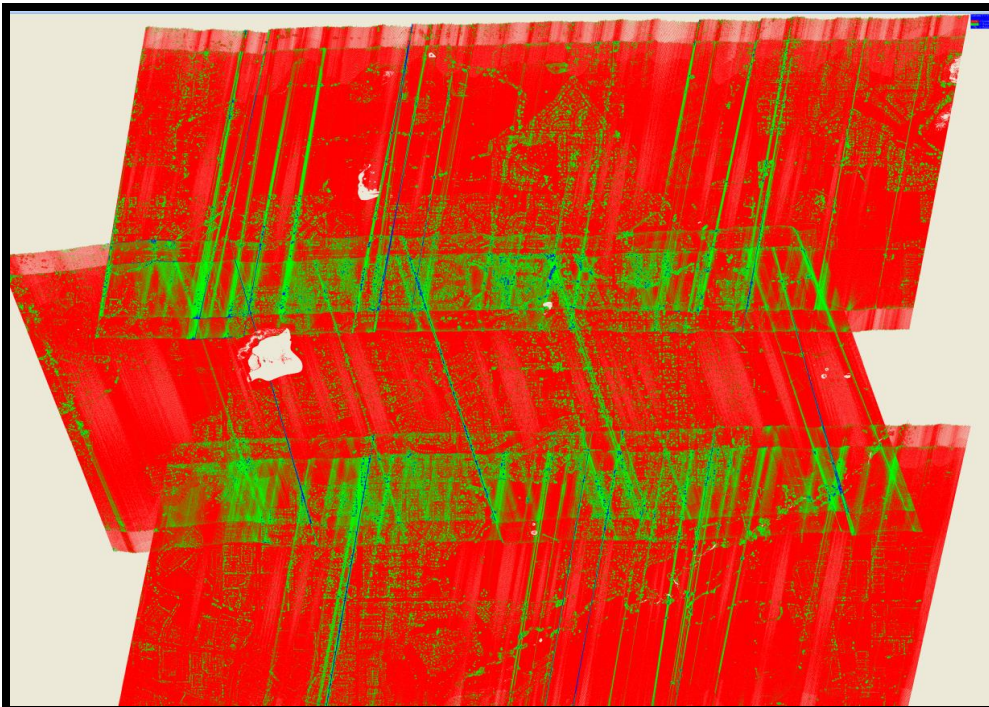
Plot of plane vertical distances from datum plane.



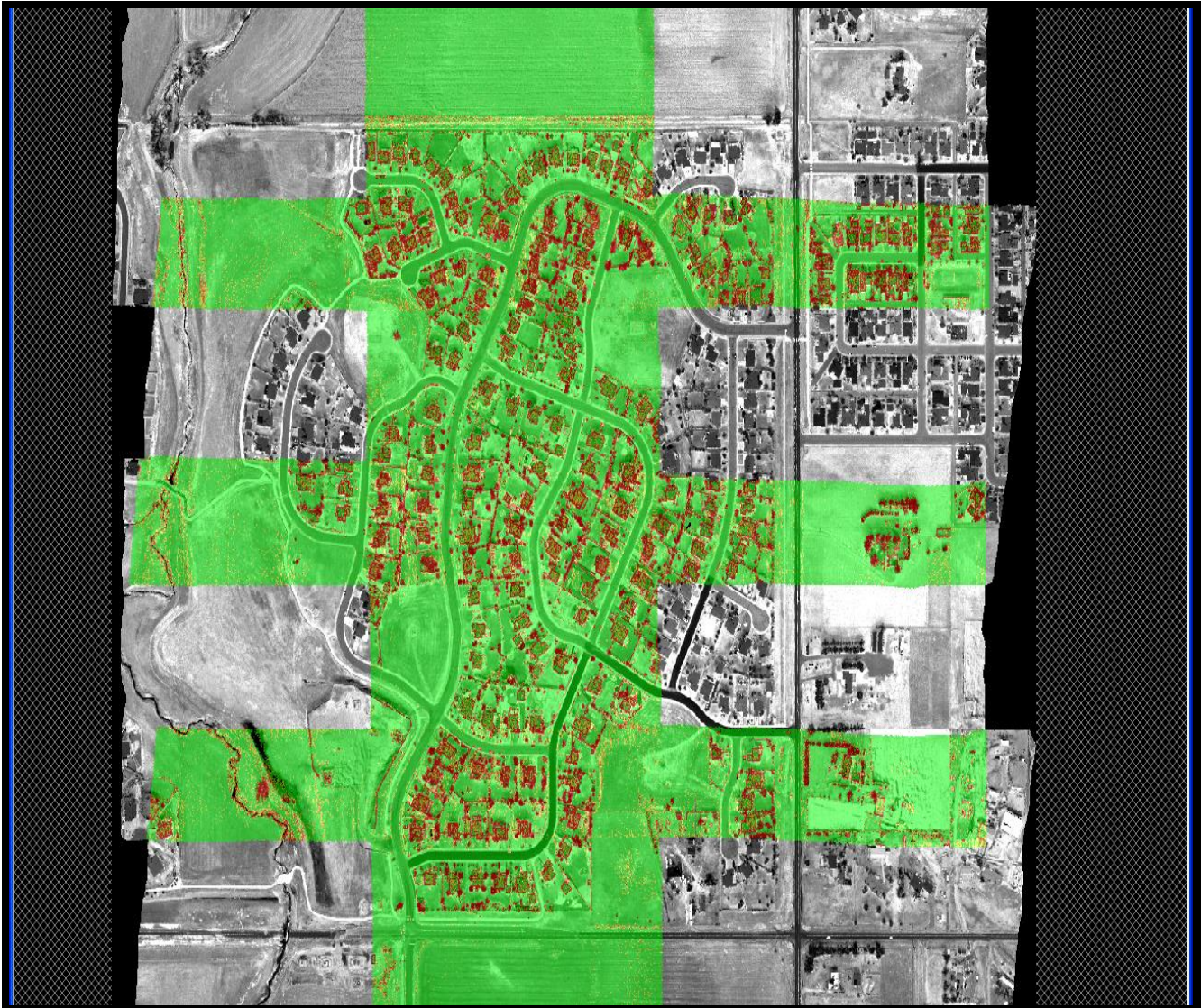
Plot of height differenced between flight lines. (Green=less than 5cm).



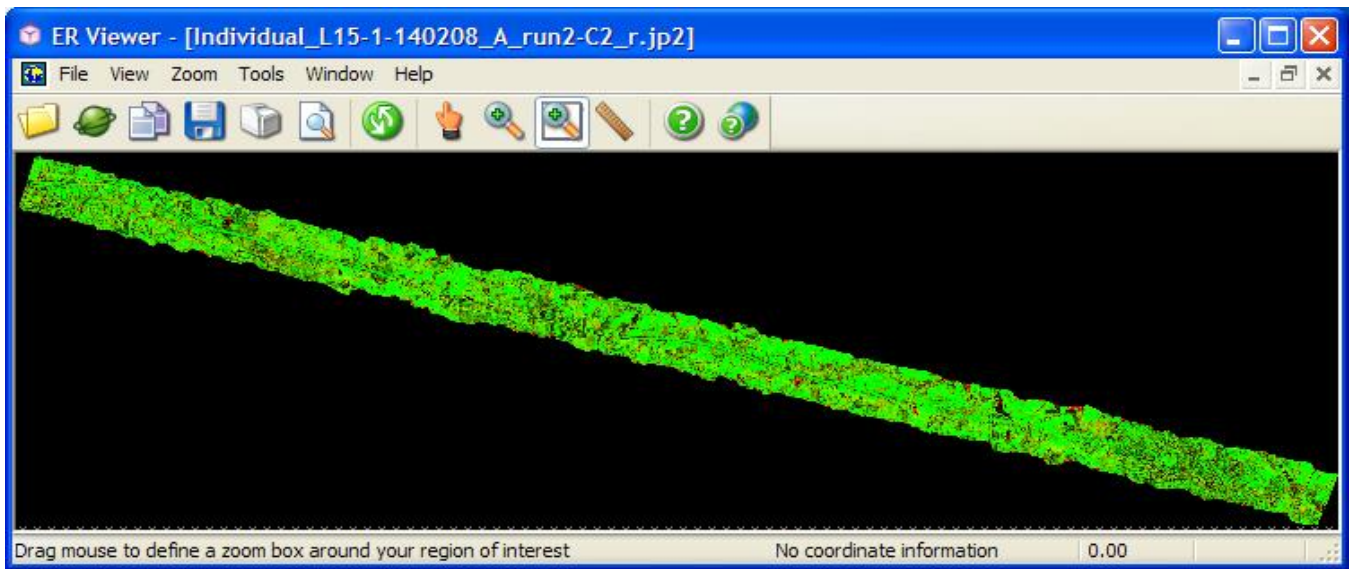
Plot of point densities. (Red=5-9 points per cell, green 10+ points per cell).



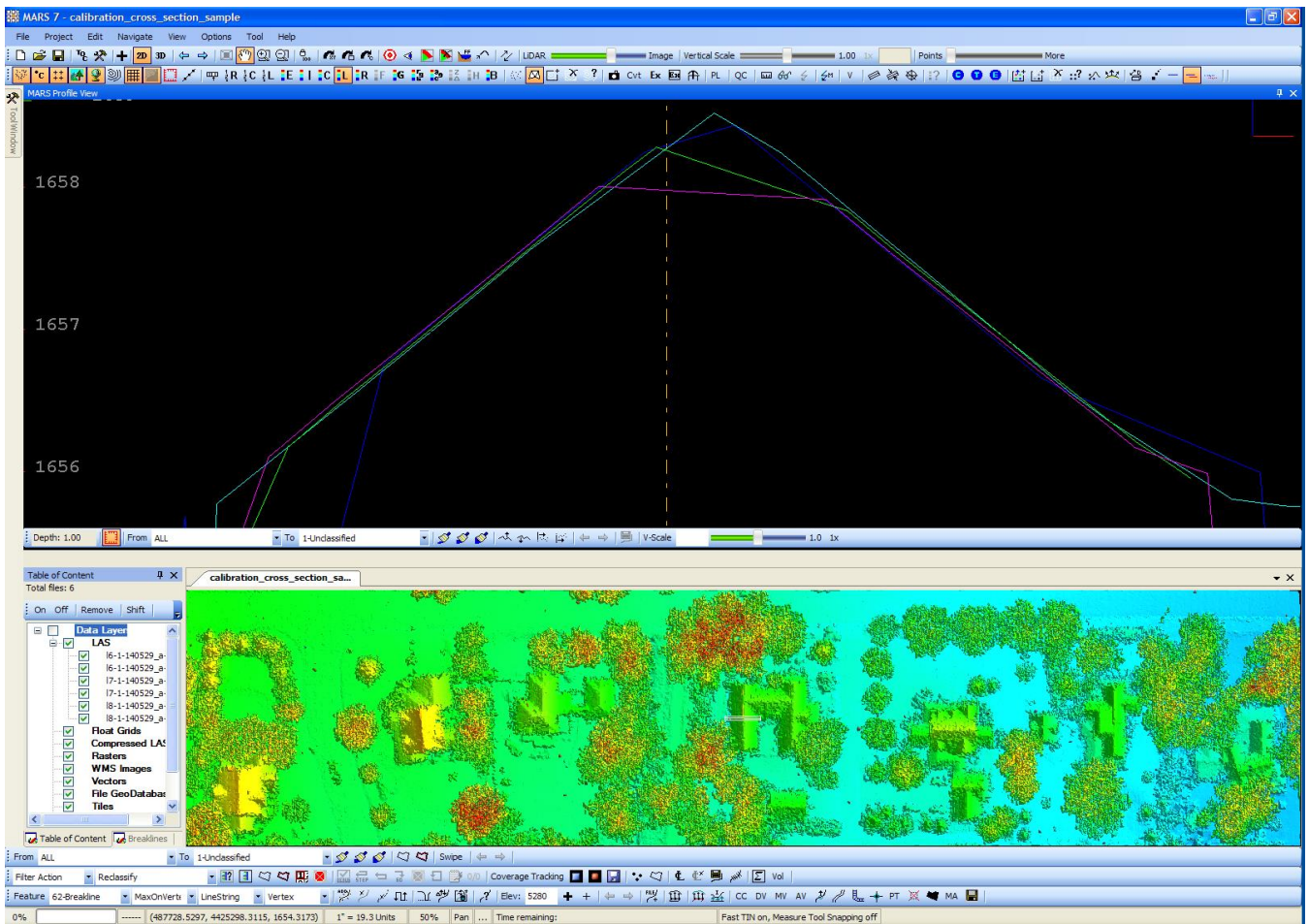
A Flight Line Separation Raster image is generated in Merrick Advanced Remote Sensing Software (MARS®), in this example ground returns from multiple flight lines that are fitting within 3 centimeters are colored green.



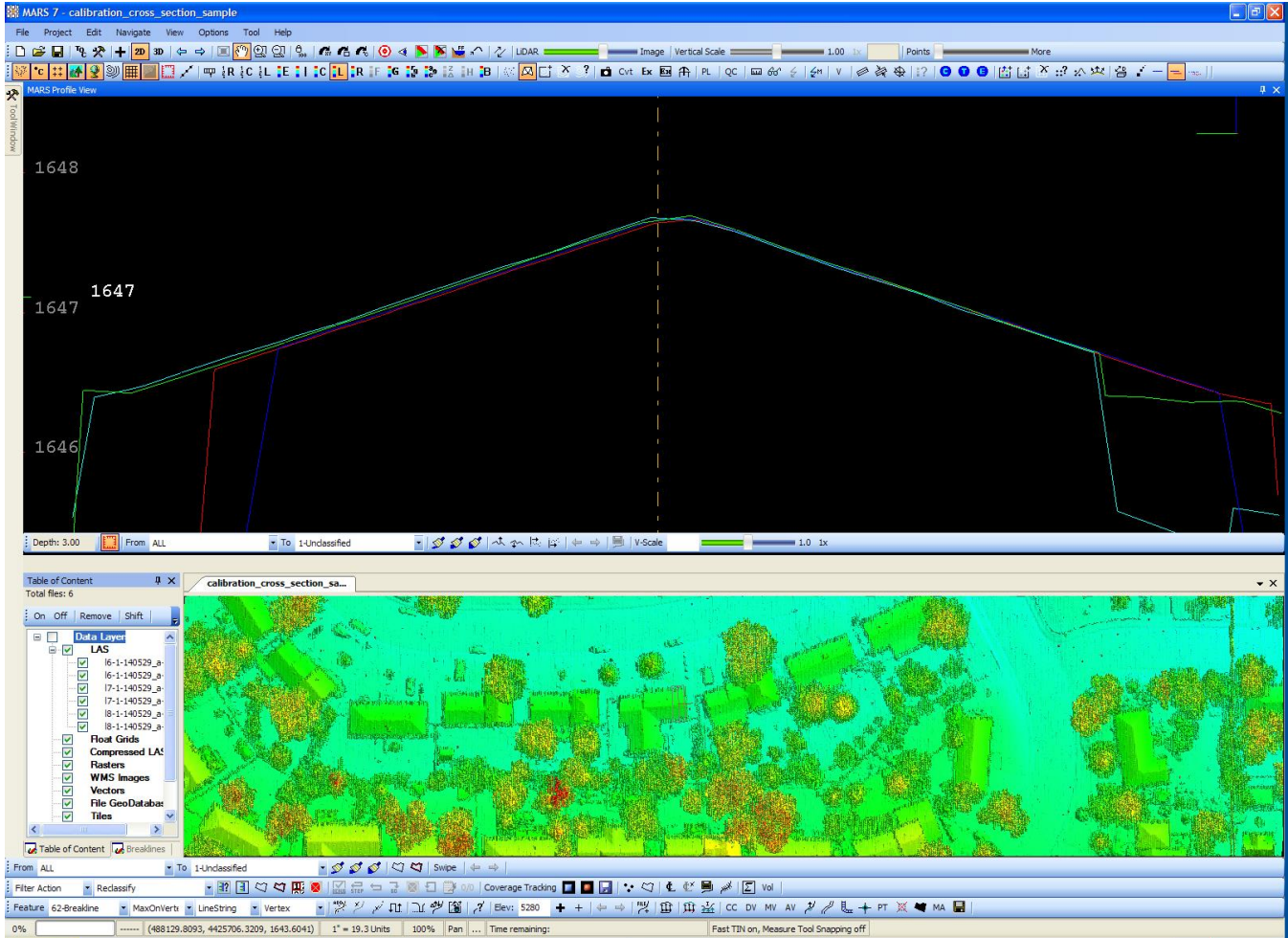
MARS® tests for internal relative vertical accuracy using inbound and outbound scan values. Again, Green is showing inbound and outbound scan data fitting to 3 centimeters.



Building cross sections are checked for good alignment. Pitch and heading are checked on roof planes parallel to the flight direction.



Roll and scale are checked on roof planes perpendicular to the flight direction.

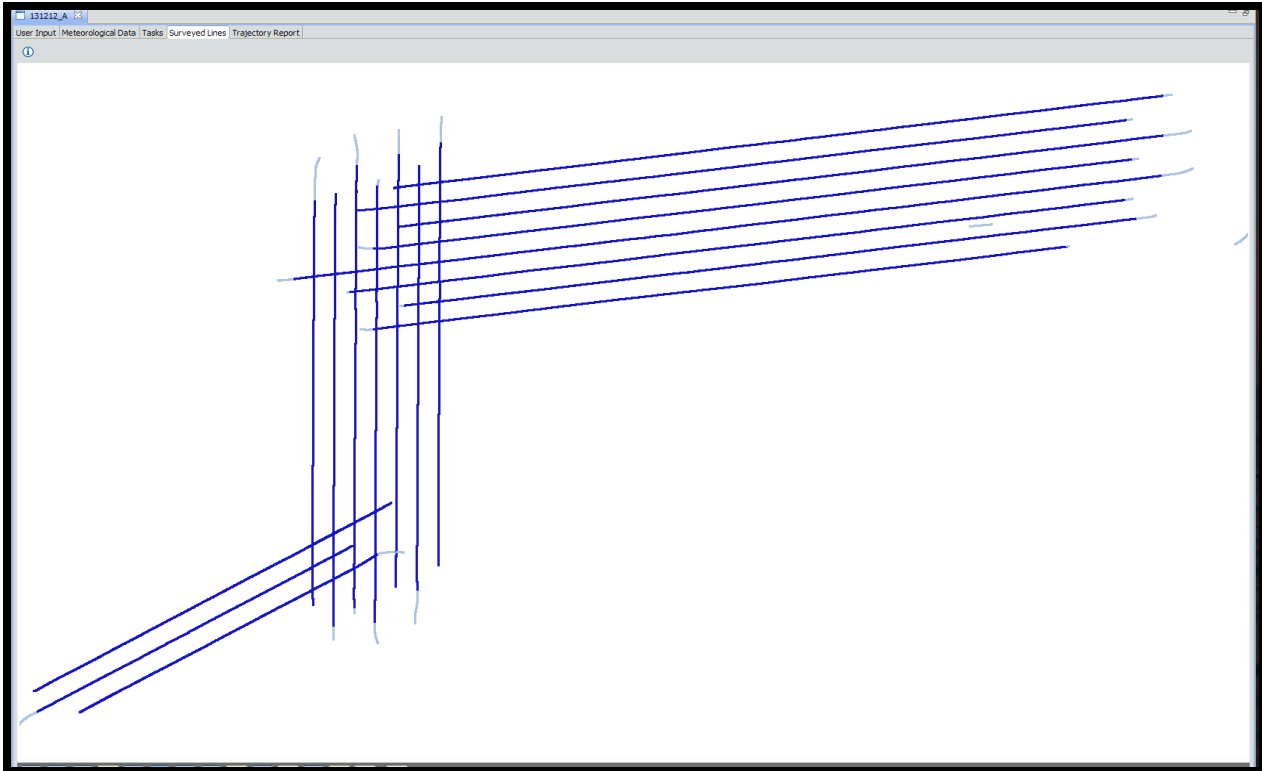


The LMS program outputs a "LCP" file with all the correction parameters. The calibration process may be run several times until the boresight adjustments are acceptable. When the boresight solution is acceptable the LCP file adjustments are saved and also applied to subsequent projects. Each new project is again analyzed and when the adjustment biases show too much drift a new boresight calibration is run. The LCP file may hold calibration tolerances for several projects.

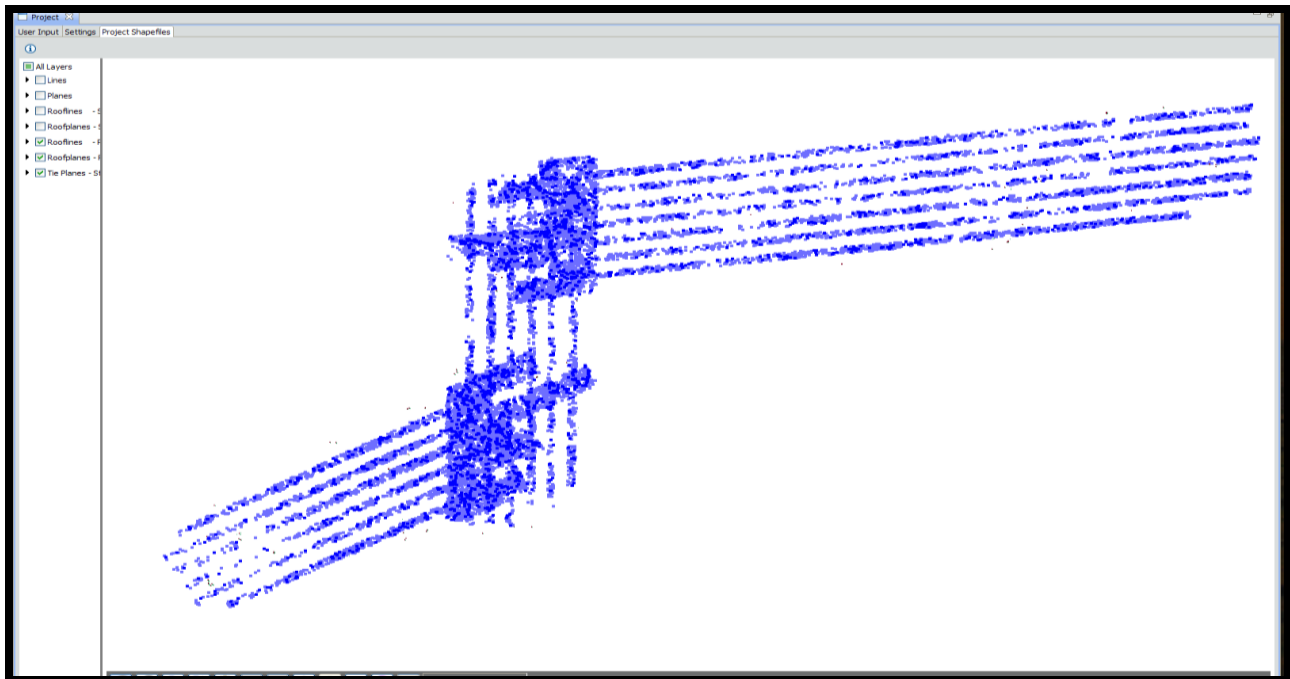
Block LAS Production Processing Procedures

The LMS production mode is run on each flight line to further tie the final lidar LAS flight line files tightly together. Production settings allow scan angle scale, scan angle lag to float and allows elevation to move slightly during flight line to flight line comparison thus further tying flight lines together. A cross flight with locked elevation data is used for controlling flight line elevations.

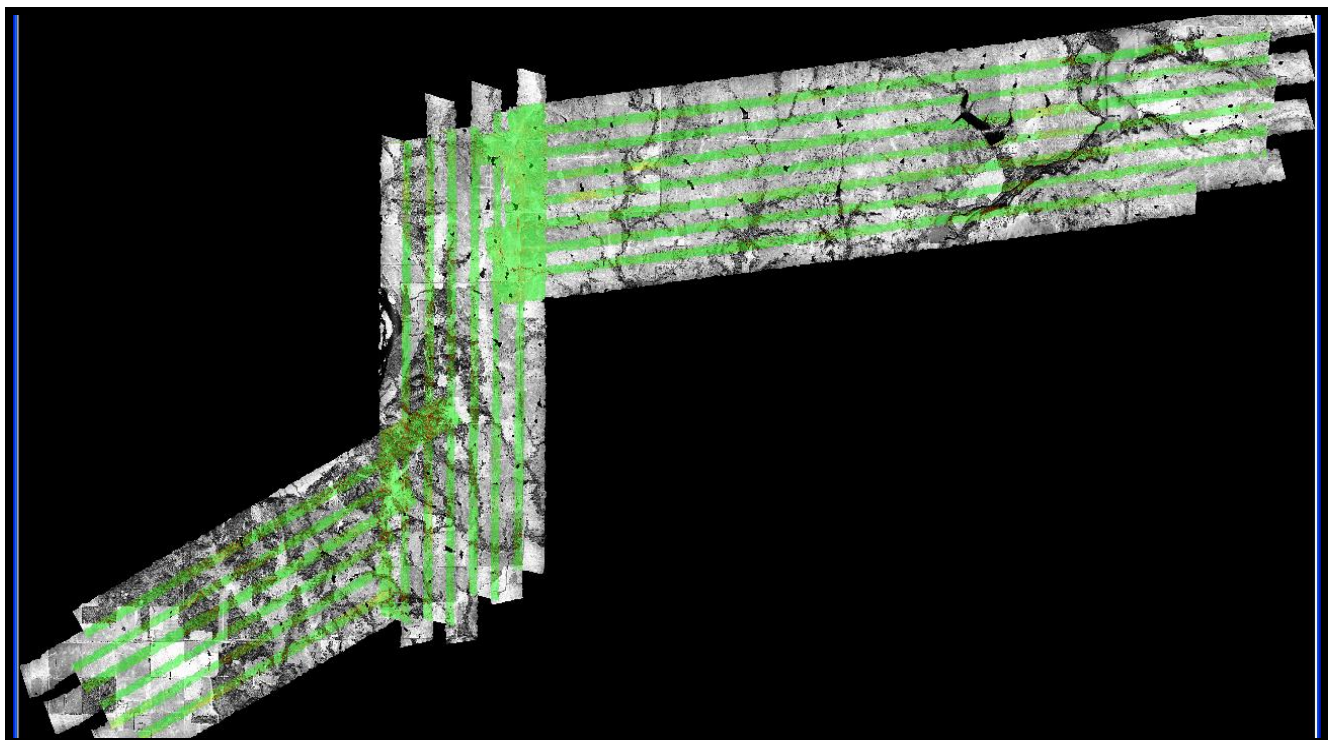
A block of data is selected to process with LMS production settings. Data collected during turns at the ends of flight lines is deselected (light blue lines).



As in self-calibration the LMS production program analyses ground, roof planes and rooflines. One cross flight is locked in elevation and all other lines are adjusted to it. Unlike the calibration site the distribution of roof planes is usually much less dense. Here matched ground tie planes are blue.

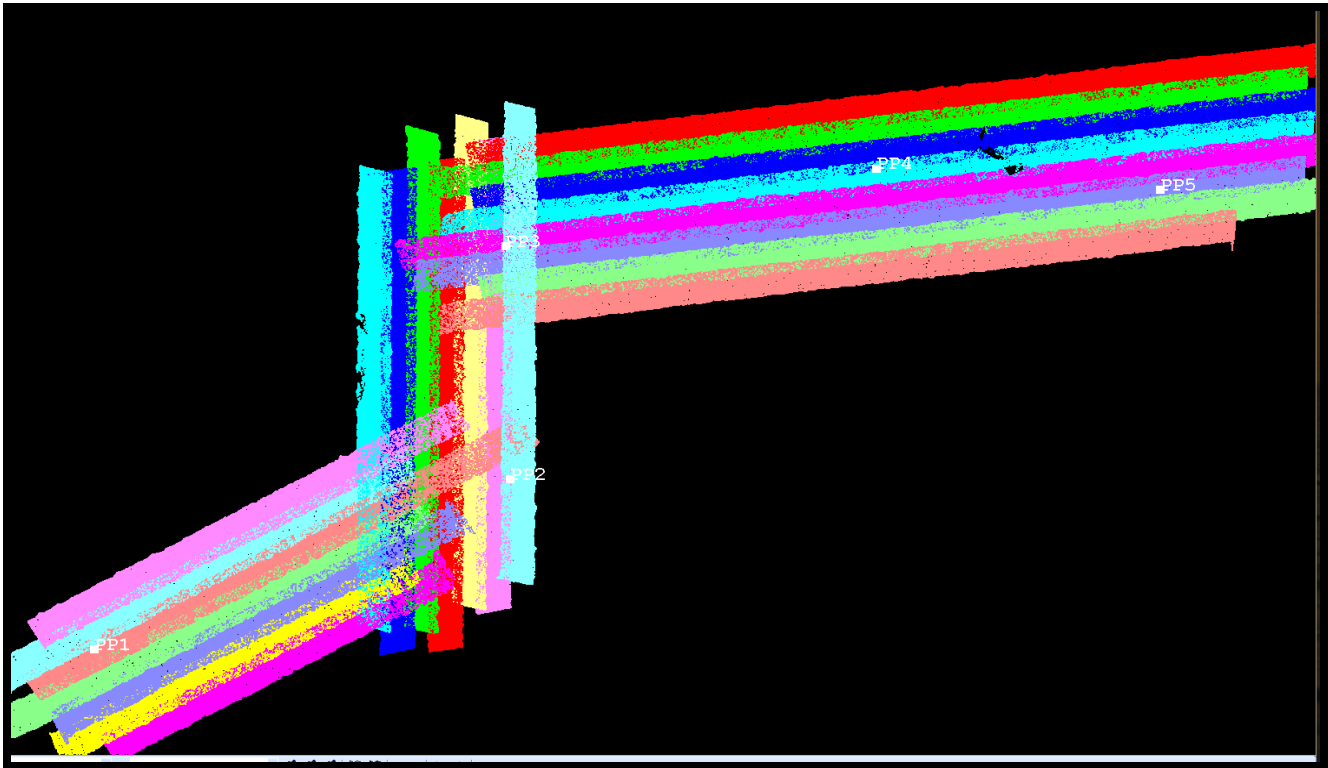


The same quality control outputs used to check self-calibrations are available to analyze the production run. Output plots are again available in LMS and cross sections plus a Flight Line Separation Raster are generated in MARS® to check coverage and quality.



Correcting the Final Elevation

After all the lines are tied together a ground control network is imported into MARS®. The ground control network may be pre-existing or collected by a licensed surveyor.



The next step is to match the ground control elevations to the lidar data set. A control report is run and the data set is shifted slightly to zero out the average elevation error and points checked for quality.

The final step before boresighted, leveled LAS files are ready for filtering is to run the MARS® QC Module on the block data. The Boresighted lidar QC Report outputs individual reports on Point Density, Nominal Pulse Spacing, Data Voids, Spatial Distribution, Scan Angles, Control Report, Flight Line Separation, Flight Line Overlap, Buffered Boundary, LAS Formats, Datums and Coordinates.

These reports are checked with the required specifications in the Project Management Plan.

Survey Report.

Survey Report

1. Introduction

1.1 *Project Summary*

Juneau Associates, Inc., P.C. is under contract with Merrick & Company to provide 60 checkpoints and 18 calibration points in Winnebago County, Il. Further, to provide 40 check points and 12 calibration points in Boone County, Il. The ground survey was conducted March 12 to March 16, 2018.

Existing NGS monuments were located and surveyed to check the accuracy of RTK/GPS survey equipment with the results shown in section 2.4 of this report.

As an Internal procedure and to verify that the check points and calibration points meet the 95% confidence level all points were re-observed and are shown in section 5 of this report.

Final horizontal coordinates of points located in Winnebago county are referenced to US State Plane 1983, NAD 1983/ NA2011, Illinois West 1202. Final horizontal coordinates of points located in Boone county are referenced to US State Plane 1983, NAD 1983/ NA2011, Illinois East 1201. Final vertical elevations are referenced to NAVD 88 using Geoid12b model as requested. All final units are in U.S. survey feet.

1.2 *Points of Contact*

Questions regarding technical aspects of this survey report should be made to:

Juneau Associates, Inc., P.C.

Jeremy Dressel, P.L.S.

2100 State St Granite City, Illinois

(618) 844-1400

2. Project Details

2.1 *Survey Equipment*

The GPS observations were performed using Trimble R-10 GNSS receiver/antenna attached to a Trimble carbon fiber fixed tip GPS pole. A Trimble TSC3 data collector was used to store GPS raw data.

2.2 Survey Field Note Information

The 130 total points observed, in both Winnebago and Boone County, were well distributed throughout the project. Field notes were kept recording the internal point number used, the NVA, VVA, CAL code, and the time, date, and current weather for each observation of said checkpoints and calibration points.

2.3 Network Design

The GPS survey was performed using a RTK (Real-Time Kinematic) system managed by Trimble called VRS Now. VRS Now provides instant access to real-time kinematic (RTK) corrections using a network of fixed continuously operating reference stations. This system allows field crews to utilize a mobile hot spot via a cellular device which connects the data collector to the VRS Now network server, which then connects to the fixed reference stations to give the GPS readings corrections to selected coordinate system.

2.4 Field Survey Procedure and Analysis

Juneau Associates field survey crews used a Trimble R-10 GNSS receiver to collect data that was then corrected to the designated coordinate system by the process discussed in section 2.3

All locations were occupied twice for three minutes, 180 EPOCHS, for each specified point at the time and date specified in the field notes utilizing the VRS network.

Seven existing NGS monuments with known horizontal and vertical coordinates were located to check the accuracy of the VRS network used to complete this project. Four total NGS monuments were observed in the II-West coordinate system identified as, DE7265, DE7369, NH0504, NH0472. Also, three NGS monuments were observed in the II-East coordinate system identified as, AH2885, AJ2947, NH0229. The "As Surveyed" vs. "Published" coordinate results are as follows on next page:

| NGS PT. ID | As Surveyed (ft) | | | Published (ft) | | | Residual Errors | | |
|---|------------------|--------------|----------------|----------------|--------------|-----------|-----------------|-------------|-------------|
| | Northing (ft) | Easting (ft) | Elevation (ft) | Northing (ft) | Easting (ft) | Elev (ft) | Delta N | Delta E | Delta Elev |
| DE7265 | 2114091.374 | 2512246.451 | 878.371 | 2114091.34 | 2512246.54 | N/A | 0.034 | -0.089 | N/A |
| DE7369 | 2000306.975 | 2626576.682 | 752.531 | 2000307.03 | 2626576.66 | N/A | -0.055 | 0.022 | N/A |
| AH2885 | 2115257.731 | 844765.863 | 979.147 | 2115257.72 | 844765.87 | 979.07 | 0.011 | -0.007 | 0.077 |
| AJ2947 | 2009226.243 | 890000.427 | 823.967 | 2009226.32 | 890000.41 | N/A | -0.077 | 0.017 | N/A |
| NH0229 | 1977594.234 | 895189.995 | 832.81 | 1977594.26 | 895189.97 | 832.84 | -0.026 | 0.025 | -0.03 |
| NH0504 | 1991140.868 | 2525732.865 | 772.743 | 1991140.86 | 2525732.87 | 772.77 | 0.008 | -0.005 | -0.027 |
| NH0472 | 2050754.052 | 2525550.749 | 802.635 | 2050754.11 | 2525550.74 | 802.66 | -0.058 | 0.009 | -0.025 |
| Number of check points | | | | | | | 7 | 7 | 4 |
| Mean Error | | | | | | | 0.0232857 | -0.004 | -0.00125 |
| Standard deviation | | | | | | | 0.0419115 | 0.039501055 | 0.05220712 |
| RMSE(ft) | | | | | | | 0.0535444 | 0.043529301 | 0.040454913 |
| RMSEr (ft) | | | | | | | 0.0690058 | | |
| RMSEr (cm) | | | | | | | 2.1032967 | | |
| Horizontal Accuracy (ACCr) at 95% Confidence Level (cm) | | | | | | | 5.1488703 | | |
| Horizontal Accuracy (ACCr) at 95% Confidence Level (ft) | | | | | | | 0.1689262 | | |
| Vertical Accuracy (ACCz) at 95% Confidence Level (cm) | | | | | | | | | 2.379816904 |

Above indicates that the accuracies would meet the 2.5cm horizontal and vertical accuracy class of the ASPRS Positional Accuracy Standards.

2.5 Data Processing Procedures

After the Survey crew collects the field data, the information is uploaded from the data collectors to a FTP site, and then downloaded into the office software. The program used for this project is called Trimble Business Center (TBC).

Data is imported into this program to obtain the following reports; Point list reports and Point Derivation Report. This is completed to check the accuracy and precision of each individual report, as well as confirm that the proper coordinate systems were used while observing points in the field. After careful review, the points shot are exported out of TBC into a .csv file for the final product.

3. FINAL COORDINATES

| Winnebago County, Illinois | | | | |
|----------------------------|---------------|--------------|------------|-------------------|
| POINT # | NORTHING (FT) | EASTING (FT) | ELEV. (FT) | COORDINATE SYSTEM |
| CALIBRATION POINTS | | | | |
| CAL 701 | 2070469.648 | 2625432.066 | 900.181 | IL-WEST |
| CAL 702 | 2121031.331 | 2533110.532 | 765.262 | IL-WEST |
| CAL 703 | 2033121.806 | 2515482.884 | 889.684 | IL-WEST |
| CAL 704 | 2074195.792 | 2543809.592 | 738.991 | IL-WEST |
| CAL 705 | 2110973.087 | 2504566.790 | 854.120 | IL-WEST |
| CAL 706 | 2096584.617 | 2564403.879 | 734.895 | IL-WEST |
| CAL 707 | 2024355.091 | 2526234.772 | 878.654 | IL-WEST |
| CAL 708 | 2005409.968 | 2618573.658 | 772.475 | IL-WEST |
| CAL 709 | 2118016.771 | 2592555.401 | 774.148 | IL-WEST |
| CAL 710 | 2115081.598 | 2614874.282 | 788.445 | IL-WEST |
| CAL 711 | 2060859.911 | 2603308.791 | 751.480 | IL-WEST |
| CAL 712 | 2028687.891 | 2618093.152 | 795.689 | IL-WEST |
| CAL 713 | 2078643.619 | 2591548.646 | 786.295 | IL-WEST |
| CAL 714 | 2072721.842 | 2515481.441 | 852.668 | IL-WEST |
| CAL 715 | 2062187.265 | 2514916.186 | 743.398 | IL-WEST |
| CAL 716 | 2031710.340 | 2565576.381 | 838.115 | IL-WEST |
| CAL 717 | 2004229.863 | 2573588.792 | 714.847 | IL-WEST |
| CAL 718 | 2087719.046 | 2623073.360 | 898.173 | IL-WEST |
| NVA CHECK POINTS | | | | |
| NVA 501 | 2070265.592 | 2622486.132 | 896.015 | IL-WEST |
| NVA 502 | 2120278.251 | 2533281.047 | 768.275 | IL-WEST |
| NVA 503 | 2032996.410 | 2510239.805 | 851.950 | IL-WEST |
| NVA 504 | 2075161.772 | 2544606.091 | 738.575 | IL-WEST |
| NVA 505 | 2111425.513 | 2505292.309 | 870.154 | IL-WEST |
| NVA 506 | 2099051.392 | 2564362.667 | 731.606 | IL-WEST |
| NVA 507 | 2028058.413 | 2526151.529 | 898.068 | IL-WEST |
| NVA 508 | 2004788.251 | 2597392.643 | 744.967 | IL-WEST |
| NVA 509 | 2118425.727 | 2593339.043 | 776.574 | IL-WEST |
| NVA 510 | 2116520.534 | 2613539.16 | 783.817 | IL-WEST |
| NVA 511 | 2061147.153 | 2603540.108 | 752.885 | IL-WEST |
| NVA 512 | 2029778.034 | 2618093.668 | 788.655 | IL-WEST |
| NVA 513 | 2077873.532 | 2591238.703 | 795.934 | IL-WEST |
| NVA 514 | 2073443.420 | 2514772.046 | 873.997 | IL-WEST |
| NVA 515 | 2059856.629 | 2514975.432 | 749.665 | IL-WEST |
| NVA 516 | 2033172.673 | 2567054.845 | 813.475 | IL-WEST |
| NVA 517 | 1998422.361 | 2574010.237 | 733.228 | IL-WEST |

| POINT # | NORTHING (FT) | EASTING (FT) | ELEV. (FT) | COORDINATE SYSTEM |
|-----------------------------------|---------------|--------------|------------|-------------------|
| NVA CHECK POINTS CONTINUED | | | | |
| NVA 518 | 2088851.309 | 2622169.587 | 873.100 | IL-WEST |
| NVA 519 | 2116740.245 | 2558251.031 | 837.524 | IL-WEST |
| NVA 520 | 2022510.215 | 2583097.017 | 727.656 | IL-WEST |
| NVA 521 | 2065906.875 | 2558090.637 | 867.761 | IL-WEST |
| NVA 522 | 2048761.982 | 2584656.088 | 729.424 | IL-WEST |
| NVA 523 | 2054776.004 | 2542581.309 | 887.390 | IL-WEST |
| NVA 524 | 2044248.579 | 2605054.583 | 798.234 | IL-WEST |
| NVA 525 | 2033823.784 | 2549824.885 | 893.630 | IL-WEST |
| NVA 526 | 2119742.456 | 2511898.749 | 862.539 | IL-WEST |
| NVA 527 | 2000329.989 | 2626387.155 | 752.746 | IL-WEST |
| NVA 528 | 2085220.180 | 2607704.408 | 739.575 | IL-WEST |
| NVA 529 | 2026422.348 | 2613008.176 | 814.846 | IL-WEST |
| NVA 530 | 2043915.351 | 2625877.610 | 848.905 | IL-WEST |
| NVA 531 | 2096011.714 | 2545999.528 | 758.937 | IL-WEST |
| NVA 532 | 2095926.236 | 2503886.893 | 938.640 | IL-WEST |
| NVA 533 | 2055465.900 | 2562256.394 | 793.441 | IL-WEST |
| NVA 534 | 2105901.327 | 2613091.665 | 779.946 | IL-WEST |
| NVA 535 | 2089001.411 | 2580098.892 | 837.303 | IL-WEST |
| VVA CHECK POINTS | | | | |
| VVA 601 | 2070204.817 | 2622384.025 | 898.693 | IL-WEST |
| VVA 602 | 2120155.883 | 2534309.345 | 754.858 | IL-WEST |
| VVA 603 | 2032730.844 | 2510299.264 | 849.426 | IL-WEST |
| VVA 604 | 2074888.717 | 2545070.738 | 738.044 | IL-WEST |
| VVA 605 | 2111113.655 | 2504947.374 | 835.489 | IL-WEST |
| VVA 606 | 2099392.569 | 2564429.142 | 730.338 | IL-WEST |
| VVA 607 | 2027457.847 | 2526219.203 | 884.616 | IL-WEST |
| VVA 608 | 2004800.536 | 2596255.812 | 750.084 | IL-WEST |
| VVA 609 | 2118279.169 | 2593364.780 | 778.240 | IL-WEST |
| VVA 610 | 2116616.971 | 2613121.235 | 781.944 | IL-WEST |
| VVA 611 | 2061113.689 | 2604093.565 | 760.005 | IL-WEST |
| VVA 612 | 2030488.280 | 2618014.828 | 774.471 | IL-WEST |
| VVA 613 | 2077436.340 | 2590805.359 | 804.166 | IL-WEST |
| VVA 614 | 2074312.356 | 2514679.170 | 855.094 | IL-WEST |
| VVA 615 | 2059994.821 | 2514686.944 | 741.851 | IL-WEST |
| VVA 616 | 2033084.024 | 2565921.943 | 836.448 | IL-WEST |
| VVA 617 | 1999308.632 | 2573744.587 | 720.035 | IL-WEST |
| VVA 618 | 2089328.054 | 2621709.557 | 856.202 | IL-WEST |
| VVA 619 | 2116589.162 | 2558171.410 | 833.660 | IL-WEST |
| VVA 620 | 2022561.222 | 2583018.699 | 726.854 | IL-WEST |
| VVA 621 | 2066096.870 | 2556863.316 | 840.630 | IL-WEST |
| VVA 622 | 2048845.495 | 2584788.997 | 730.302 | IL-WEST |
| VVA 623 | 2055035.218 | 2542511.865 | 885.074 | IL-WEST |

| POINT # | NORTHING (FT) | EASTING (FT) | ELEV. (FT) | COORDINATE SYSTEM |
|-----------------------------------|---------------|--------------|------------|-------------------|
| VVA CHECK POINTS CONTINUED | | | | |
| VVA 624 | 2043949.384 | 2604613.222 | 812.229 | IL-WEST |
| VVA 625 | 2032976.189 | 2549887.780 | 912.796 | IL-WEST |
| Boone County, Illinois | | | | |
| POINT # | NORTHING (FT) | EASTING (FT) | ELEV. (FT) | COORDINATE SYSTEM |
| CALIBRATION POINTS | | | | |
| CAL 1701 | 2051862.416 | 878216.298 | 802.587 | IL-EAST |
| CAL 1702 | 2106307.521 | 844556.751 | 984.168 | IL-EAST |
| CAL 1703 | 2115207.600 | 878294.244 | 994.194 | IL-EAST |
| CAL 1704 | 2073970.266 | 827200.679 | 930.438 | IL-EAST |
| CAL 1705 | 2062311.178 | 880934.847 | 858.895 | IL-EAST |
| CAL 1706 | 2001440.504 | 881174.874 | 839.840 | IL-EAST |
| CAL 1707 | 2027282.822 | 853234.960 | 865.417 | IL-EAST |
| CAL 1708 | 2001447.861 | 839093.207 | 806.218 | IL-EAST |
| CAL 1709 | 2048855.805 | 867665.682 | 813.934 | IL-EAST |
| CAL 1710 | 2060979.104 | 867714.141 | 828.527 | IL-EAST |
| CAL 1711 | 2078251.699 | 841570.664 | 925.934 | IL-EAST |
| CAL 1712 | 2037259.080 | 822424.283 | 759.715 | IL-EAST |
| NVA CHECK POINTS | | | | |
| NVA 1501 | 2053022.725 | 878215.556 | 808.401 | IL-EAST |
| NVA 1502 | 2106072.131 | 841919.122 | 965.819 | IL-EAST |
| NVA 1503 | 2112564.366 | 883451.347 | 943.124 | IL-EAST |
| NVA 1504 | 2072895.210 | 829600.427 | 934.876 | IL-EAST |
| NVA 1505 | 2067556.377 | 883595.626 | 838.479 | IL-EAST |
| NVA 1506 | 2001422.943 | 883284.948 | 842.698 | IL-EAST |
| NVA 1507 | 2025362.855 | 853991.475 | 850.475 | IL-EAST |
| NVA 1508 | 2002103.238 | 841068.650 | 801.108 | IL-EAST |
| NVA 1509 | 2049828.139 | 867663.873 | 832.046 | IL-EAST |
| NVA 1510 | 2065028.708 | 867721.370 | 818.783 | IL-EAST |
| NVA 1511 | 2078264.150 | 843116.661 | 917.993 | IL-EAST |
| NVA 1512 | 2036943.158 | 822953.243 | 758.035 | IL-EAST |
| NVA 1513 | 2122252.256 | 858103.282 | 973.447 | IL-EAST |
| NVA 1514 | 2087485.820 | 869813.728 | 899.466 | IL-EAST |
| NVA 1515 | 2023072.853 | 841258.475 | 806.963 | IL-EAST |
| NVA 1516 | 2099366.703 | 832953.347 | 941.048 | IL-EAST |
| NVA 1517 | 2029357.682 | 878156.921 | 786.329 | IL-EAST |
| NVA 1518 | 2051291.112 | 835603.539 | 810.601 | IL-EAST |
| NVA 1519 | 2123154.857 | 832887.949 | 924.778 | IL-EAST |
| NVA 1520 | 2072983.811 | 855877.758 | 845.807 | IL-EAST |
| NVA 1521 | 2011994.234 | 830519.917 | 844.875 | IL-EAST |
| NVA 1522 | 1999821.586 | 867142.977 | 856.848 | IL-EAST |
| NVA 1523 | 2014059.548 | 865114.130 | 826.128 | IL-EAST |
| NVA 1524 | 2088873.308 | 844318.754 | 953.813 | IL-EAST |

| POINT # | NORTHING (FT) | EASTING (FT) | ELEV. (FT) | COORDINATE SYSTEM |
|-----------------------------------|---------------|--------------|------------|-------------------|
| NVA CHECK POINTS CONTINUED | | | | |
| NVA 1525 | 1998906.614 | 830436.917 | 788.841 | IL-EAST |
| VVA CHECK POINTS | | | | |
| VVA 1601 | 2054300.998 | 878148.451 | 809.727 | IL-EAST |
| VVA 1602 | 2106028.965 | 841555.987 | 969.287 | IL-EAST |
| VVA 1603 | 2112628.859 | 881548.145 | 954.247 | IL-EAST |
| VVA 1604 | 2072848.457 | 830377.278 | 936.049 | IL-EAST |
| VVA 1605 | 2066856.987 | 883553.799 | 834.303 | IL-EAST |
| VVA 1606 | 2001387.337 | 882611.311 | 842.144 | IL-EAST |
| VVA 1607 | 2025308.872 | 855927.898 | 860.700 | IL-EAST |
| VVA 1608 | 2001254.217 | 840963.534 | 794.980 | IL-EAST |
| VVA 1609 | 2050471.909 | 867714.411 | 837.833 | IL-EAST |
| VVA 1610 | 2064983.386 | 866402.796 | 816.945 | IL-EAST |
| VVA 1611 | 2078382.030 | 842878.39 | 920.882 | IL-EAST |
| VVA 1612 | 2037285.291 | 822606.523 | 757.960 | IL-EAST |
| VVA 1613 | 2122152.080 | 861170.57 | 960.083 | IL-EAST |
| VVA 1614 | 2087559.907 | 870494.394 | 899.528 | IL-EAST |
| VVA 1615 | 2023774.914 | 841215.927 | 794.260 | IL-EAST |