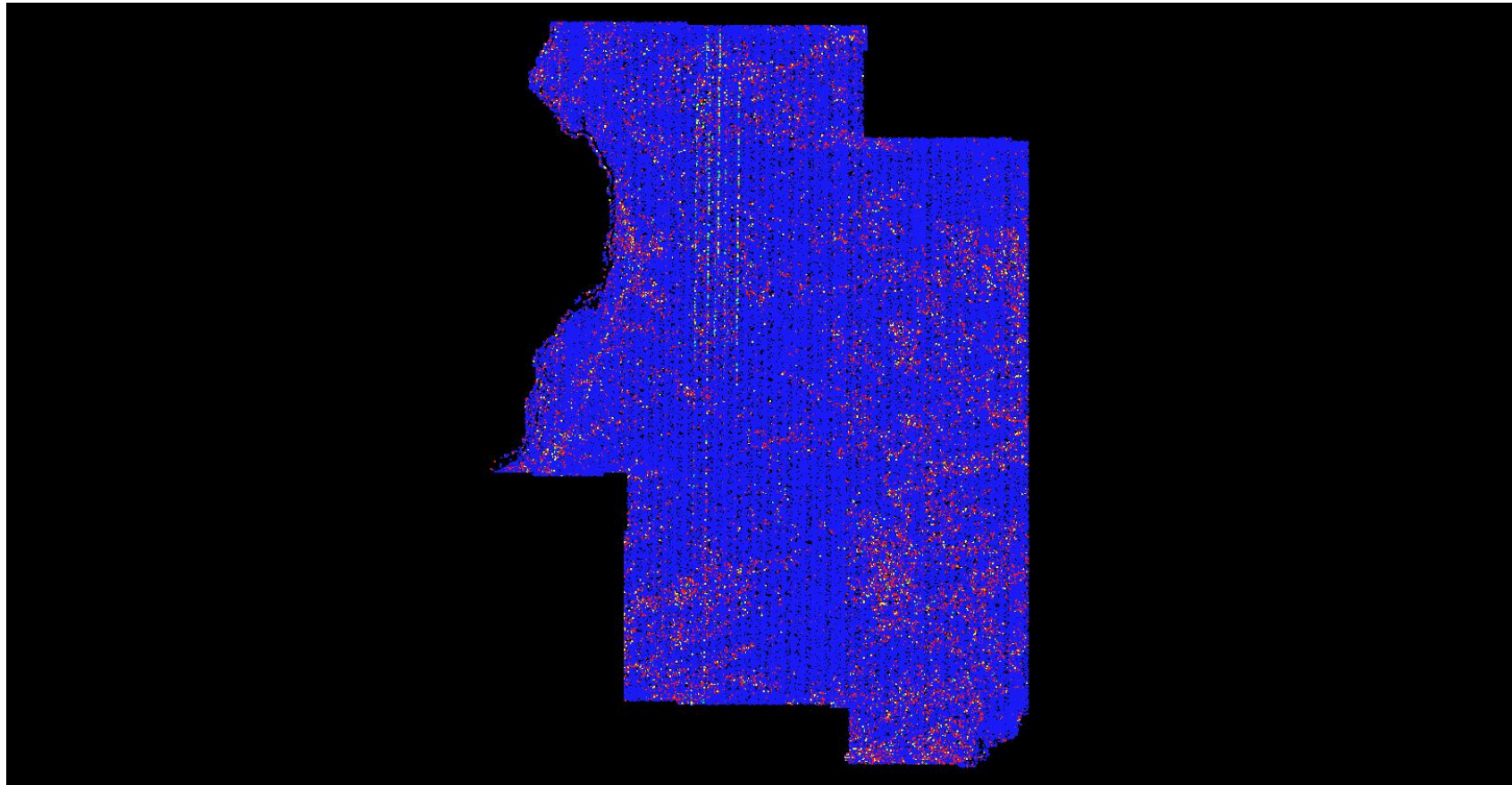


C-2 Report on Multiple Discrete Returns - All Returns

The purpose of this section is to show a graphic of lidar data points colored by all returns. Blank flight lines can indicate a collection or processing problem dealing with lidar return attribute information.

[Data Source - V:\Mapping\Projects\65221205_IL_MidNorth\Production\Final_Client_Deliverables\229058\IL_MidNorth_1_D22_229055\point_cloud\Swaths](V:\Mapping\Projects\65221205_IL_MidNorth\Production\Final_Client_Deliverables\229058\IL_MidNorth_1_D22_229055\point_cloud\Swaths)

[Result Path - D:\00_ISGS\IL_MidNorth_1_D22_229055_OC\C_2\ColorByReturns.jpg](D:\00_ISGS\IL_MidNorth_1_D22_229055_OC\C_2\ColorByReturns.jpg)



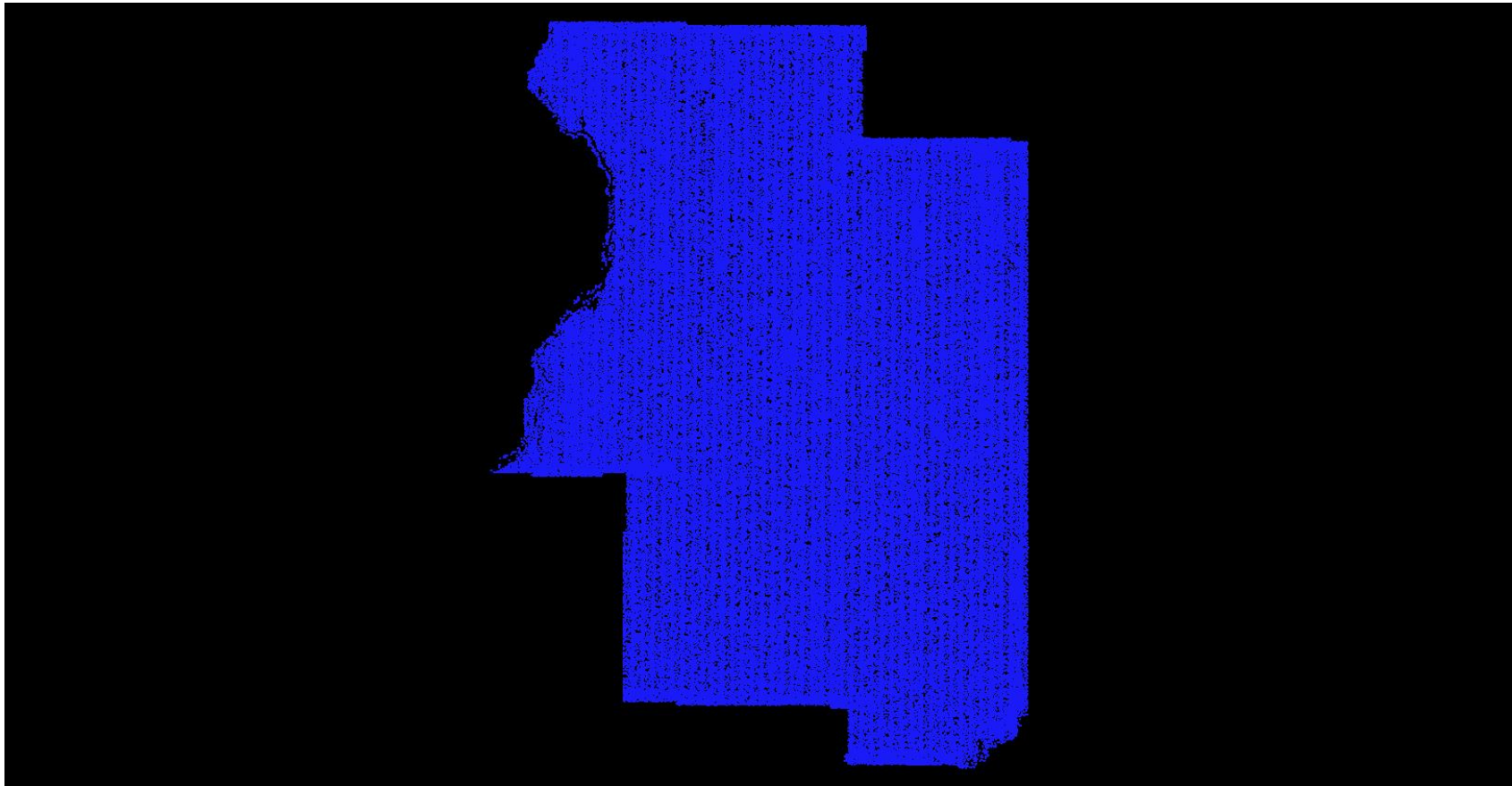
First Second Third Fourth or other

C-2 Report on Multiple Discrete Returns - First Returns

The purpose of this section is to show a graphic of lidar data points colored by first returns. Blank flight lines can indicate a collection or processing problem dealing with lidar return attribute information.

[Data Source - V:\Mapping\Projects\65221205_IL_MidNorth\Production\Final_Client_Deliverables\229058\IL_MidNorth_1_D22_229055\point_cloud\Swaths](V:\Mapping\Projects\65221205_IL_MidNorth\Production\Final_Client_Deliverables\229058\IL_MidNorth_1_D22_229055\point_cloud\Swaths)

[Result Path - D:\00_ISGS\IL_MidNorth_1_D22_229055_OC\C_2\ColorByReturns_FirstReturns.jpg](D:\00_ISGS\IL_MidNorth_1_D22_229055_OC\C_2\ColorByReturns_FirstReturns.jpg)

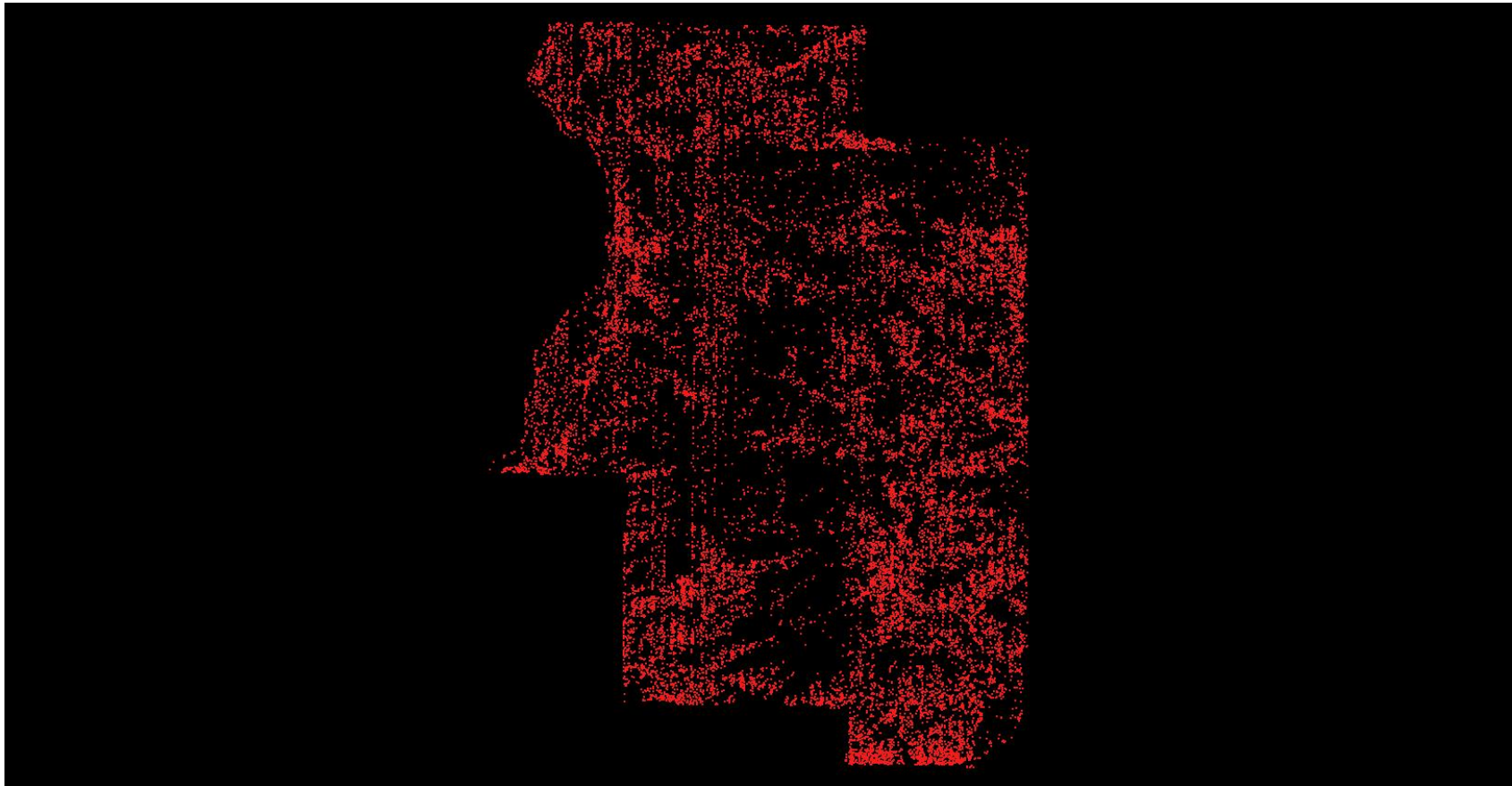


C-2 Report on Multiple Discrete Returns - Second Returns

The purpose of this section is to show a graphic of lidar data points colored by second returns. Blank flight lines can indicate a collection or processing problem dealing with lidar return attribute information.

[Data Source - V:\Mapping\Projects\65221205_IL_MidNorth\Production\Final_Client_Deliverables\229058\IL_MidNorth_1_D22_229055\point_cloud\Swaths](V:\Mapping\Projects\65221205_IL_MidNorth\Production\Final_Client_Deliverables\229058\IL_MidNorth_1_D22_229055\point_cloud\Swaths)

[Result Path - D:\00_ISGS\IL_MidNorth_1_D22_229055_OC\C_2\ColorByReturns_SecondReturns.jpg](D:\00_ISGS\IL_MidNorth_1_D22_229055_OC\C_2\ColorByReturns_SecondReturns.jpg)

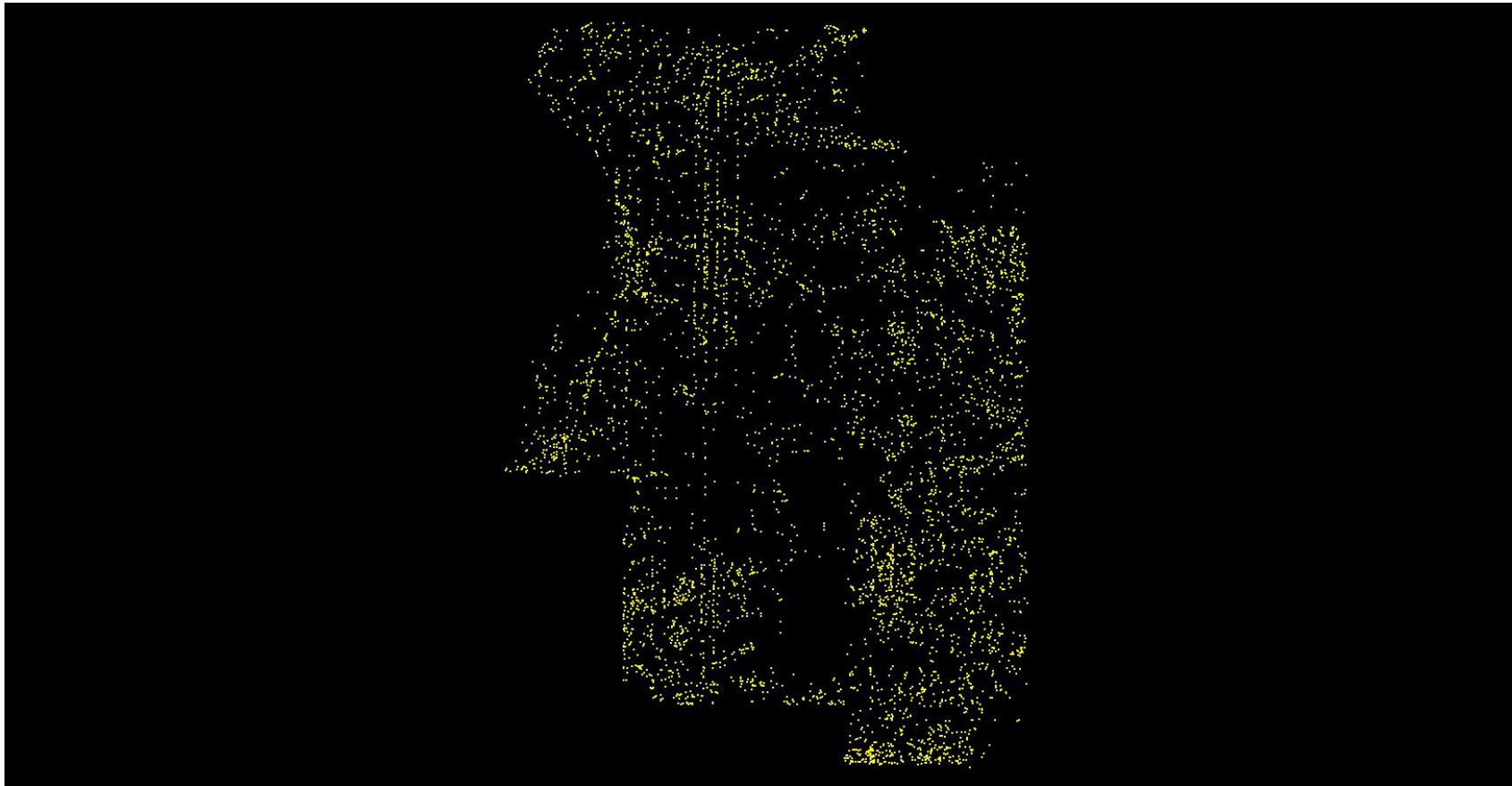


C-2 Report on Multiple Discrete Returns - Third Returns

The purpose of this section is to show a graphic of lidar data points colored by third returns. Blank flight lines can indicate a collection or processing problem dealing with lidar return attribute information.

[Data Source - V:\Mapping\Projects\65221205_IL_MidNorth\Production\Final_Client_Deliverables\229058\IL_MidNorth_1_D22_229055\point_cloud\Swaths](V:\Mapping\Projects\65221205_IL_MidNorth\Production\Final_Client_Deliverables\229058\IL_MidNorth_1_D22_229055\point_cloud\Swaths)

[Result Path - D:\00_ISGS\IL_MidNorth_1_D22_229055_OC\C_2\ColorByReturns_ThirdReturns.jpg](D:\00_ISGS\IL_MidNorth_1_D22_229055_OC\C_2\ColorByReturns_ThirdReturns.jpg)



C-2 Report on Multiple Discrete Returns - Other Returns

The purpose of this section is to show a graphic of lidar data points colored by fourth or other returns. Blank flight lines can indicate a collection or processing problem dealing with lidar return attribute information.

[Data Source - V:\Mapping\Projects\65221205_IL_MidNorth\Production\Final_Client_Deliverables\229058\IL_MidNorth_1_D22_229055\point_cloud\Swaths](V:\Mapping\Projects\65221205_IL_MidNorth\Production\Final_Client_Deliverables\229058\IL_MidNorth_1_D22_229055\point_cloud\Swaths)

[Result Path - D:\00_ISGS\IL_MidNorth_1_D22_229055_OC\C_2\ColorByReturns_OtherReturns.jpg](D:\00_ISGS\IL_MidNorth_1_D22_229055_OC\C_2\ColorByReturns_OtherReturns.jpg)

