

Classified Point Cloud

Deliverable 1 Summary

✓ General		
Folder:	F:\Classified_LAS	
Total # of Files:	1,936	(All Valid)
Total File Size:	107.6 GB	(115,497,081,644 bytes)

✓ Tile Sizes		
Median Tile Size:	2,500' x 2,500'	
Minimum Tile Size:	2,500' x 2,500'	
Maximum Tile Size:	2,500' x 2,500'	
X Range:	165000.00' to 275000.00'	
Y Range:	1702500.00' to 1812500.00'	
Elevation Range:	82.56' to 3251.72'	

✓ LAS Version And Point Record Formats		
v1.4, Point Record Format 6	1,936 of 1,936 Tiles	

✓ Spatial Reference System		
Horizontal Projection	NAD83(2011) / Indiana East (ftUS)	1,936 of 1,936 Tiles
Horizontal Datum	NAD83 (National Spatial Reference System 2011)	1,936 of 1,936 Tiles
Horizontal Units	US survey foot	1,936 of 1,936 Tiles
Vertical Datum	NAVD88 height (ftUS)	1,936 of 1,936 Tiles
Vertical Units	US survey foot	1,936 of 1,936 Tiles
Storage Method	WKT	1,936 of 1,936 Tiles

✓ GPS Time Type		
Adjusted	1,936 of 1,936 Tiles	

✓ File Source ID Equals 0		
Yes	1,936 of 1,936 Tiles	

✓ VLR/EVLR Reserved Equals 0		
Yes	9,680 of 9,680 Records	

✓ Unnecessary Bytes At End Of File		
No	1,936 of 1,936 Tiles	

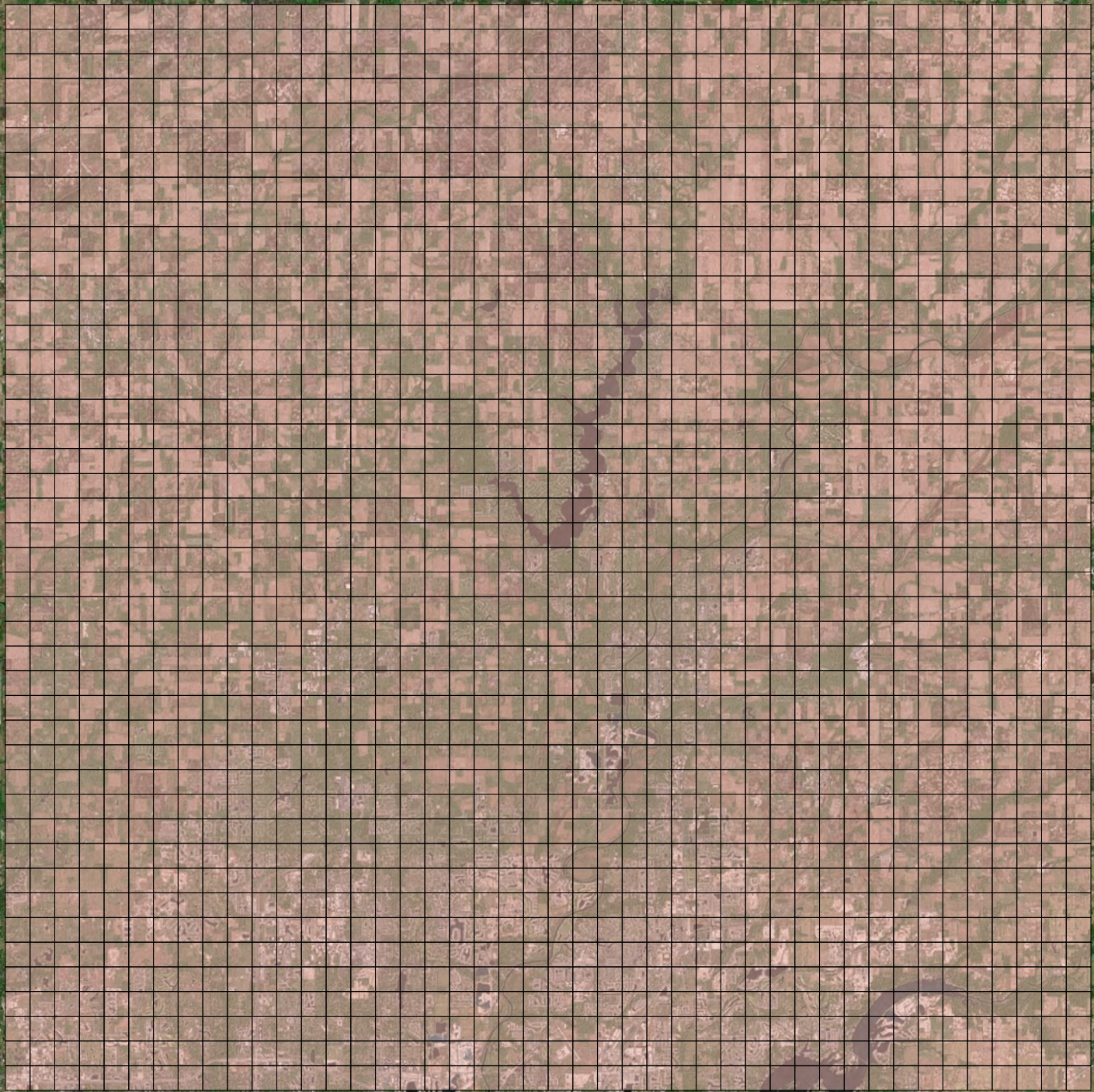
✓ Legacy Point Count Check		
Zero	1,936 of 1,936 Tiles	

✓ System Identifier		
Quantum Spatial	1,936 of 1,936 Tiles	

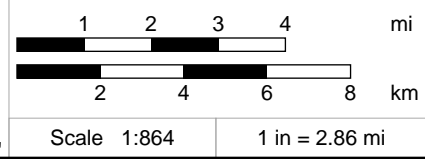
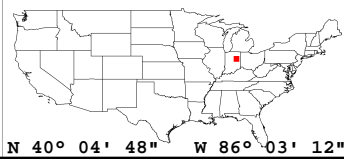
✓ Generating Software		
LiDAR Suite	1,936 of 1,936 Tiles	



Classified LAS



Classified LAS Tiles (1,936)



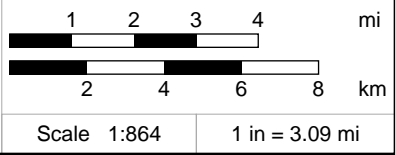
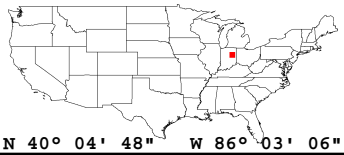
Raw LAS Flight Line Strips

Deliverable 2 Summary

✓ General		
Folder:	F:\Calibrated_FL_Swath	
Total # of Files:	37	(All Valid)
Total File Size:	114.1 GB	(122,521,491,384 bytes)
✓ Raw LAS Strips		
Elevation Range:	83' to 3252'	
✓ LAS Version And Point Record Formats		
v1.4, Point Record Format 6	37 of 37 Tiles	
✓ Spatial Reference System		
Horizontal Projection	NAD83(2011) / Indiana East (ftUS)	37 of 37 Tiles
Horizontal Datum	NAD83 (National Spatial Reference System 2011)	37 of 37 Tiles
Horizontal Units	US survey foot	37 of 37 Tiles
Vertical Datum	NAVD88 height (ftUS)	37 of 37 Tiles
Vertical Units	US survey foot	37 of 37 Tiles
Storage Method	WKT	37 of 37 Tiles
✓ GPS Time Type		
Adjusted	37 of 37 Strips	
✓ File Source IDs		
Equals Zero:	None	
All Unique:	Yes	
FLs:	101 - 135, 901 - 902	
✓ VLR/EVLR Reserved Equals 0		
Yes	177 of 177 Records	
✓ Unnecessary Bytes At End Of File		
No	37 of 37 Strips	
✓ Legacy Point Count Check		
Zero	37 of 37 Strips	
✓ System Identifier		
Quantum Spatial	37 of 37 Strips	
✓ Generating Software		
LiDAR Suite	37 of 37 Strips	



FL Strips (37)

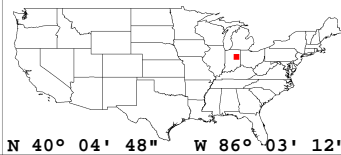
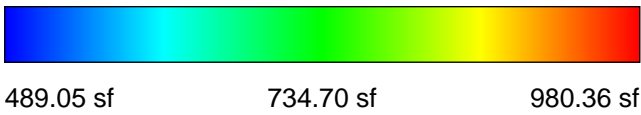
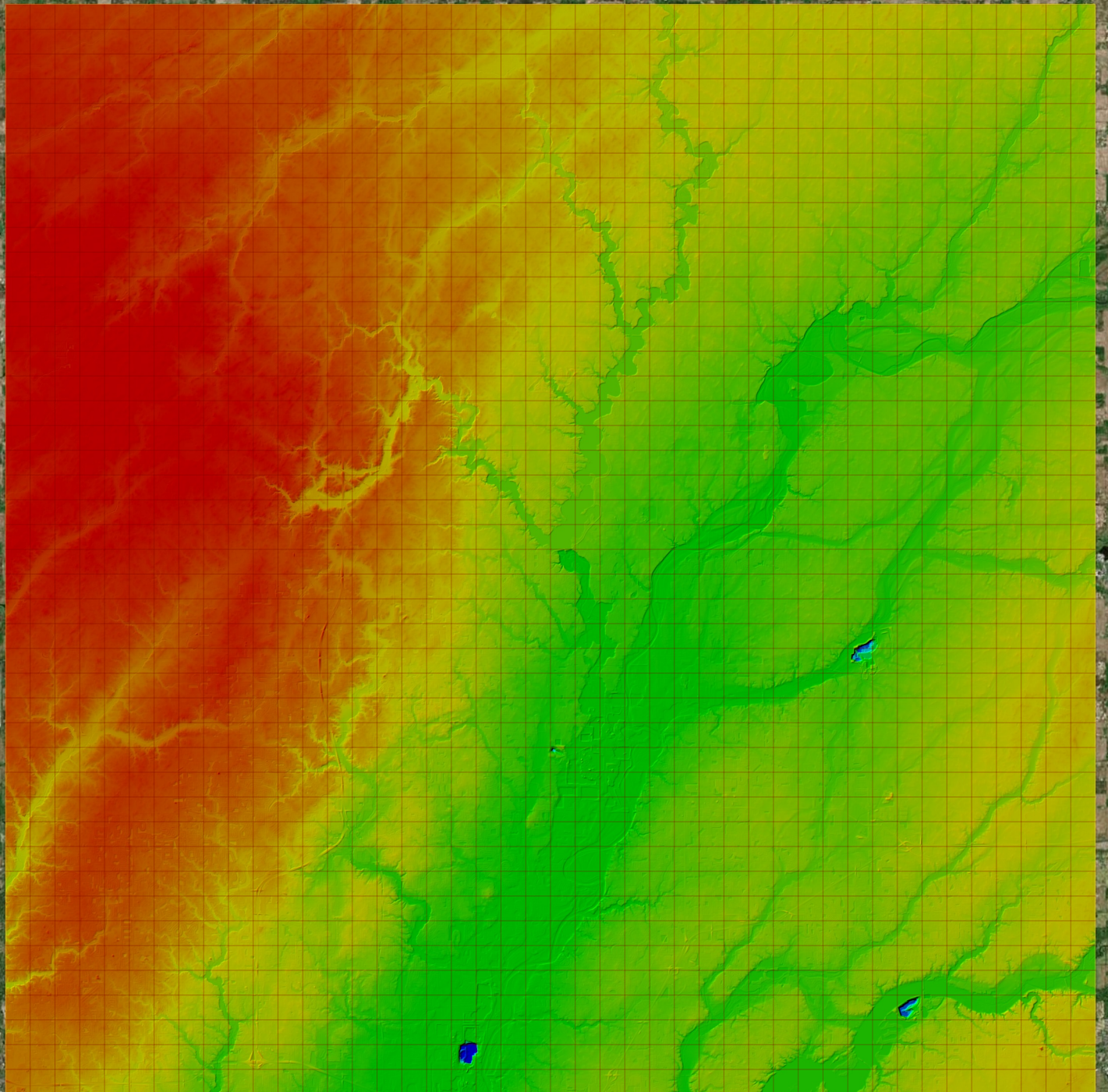


✓ General		
Folder:	F:\ERDAS_IMG_Raster_DEM	
Total # of Files:	1,936	(All Valid)
Total File Size:	5.0 GB	(5,381,498,974 bytes)

✓ Tile Sizes		
Median Tile Size:	2,500' x 2,500'	
Minimum Tile Size:	2,500' x 2,500'	
Maximum Tile Size:	2,500' x 2,500'	
X Range:	165000.00' to 275000.00'	
Y Range:	1702500.00' to 1812500.00'	
Elevation Range:	488.80' to 982.62'	

✓ Spatial Reference System		
Horizontal Projection	NAD_1983_2011_StatePlane_Indiana_East_FIPS_1301_Ft_US	1,936 of 1,936 Tiles
Horizontal Datum	D_NAD_1983_2011	1,936 of 1,936 Tiles
Horizontal Units	Foot_US	1,936 of 1,936 Tiles
Vertical Datum	NAVD88 height (ftUS)	1,936 of 1,936 Tiles
Vertical Units	Foot_US	1,936 of 1,936 Tiles

✓ Raster		
File Type:	IMG	1,936 of 1,936
Bands:	1	1,936 of 1,936
Grid Size (pixels):	800 x 800	1,936 of 1,936
Pixel Resolution:	3.12500000' x 3.12500000'	1,936 of 1,936
Pixel Type:	32-bit Floating Point	1,936 of 1,936
Compression:	None	1,936 of 1,936
No Data Value:	-32767	1,936 of 1,936

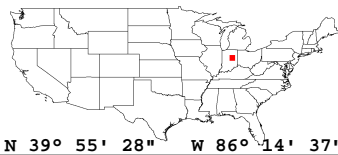


✓ General		
Folder:	F:\Intensity_Images	
Total # of Files:	1,936	(All Valid)
Total File Size:	2.6 GB	(2,763,643,872 bytes)

✓ Tile Sizes		
Median Tile Size:	2,500' x 2,500'	
Minimum Tile Size:	2,500' x 2,500'	
Maximum Tile Size:	2,500' x 2,500'	
X Range:	165000.00' to 275000.00'	
Y Range:	1702500.00' to 1812500.00'	

✓ Spatial Reference System		
Horizontal Projection	NAD_1983_2011_StatePlane_Indiana_East_FIPS_1301_Ft_US	1,936 of 1,936 Tiles
Horizontal Datum	NAD_1983_2011	1,936 of 1,936 Tiles
Horizontal Units	Foot_US	1,936 of 1,936 Tiles
Vertical Datum	NAVD88 height (ftUS)	1,936 of 1,936 Tiles
Vertical Units	Foot_US	1,936 of 1,936 Tiles

✓ Raster		
File Type:	TIF	1,936 of 1,936
Bands:	1	1,936 of 1,936
Grid Size (pixels):	800 x 800	1,936 of 1,936
Pixel Resolution:	3.12500000' x 3.12500000'	1,936 of 1,936
Pixel Type:	8-bit Unsigned Integer (MINISBLACK)	1,936 of 1,936
Compression:	NONE	1,936 of 1,936
No Data Value:	NONE	1,936 of 1,936



N 39° 55' 28" W 86° 14' 37"

