

NETWORK SURVEY LOG V3

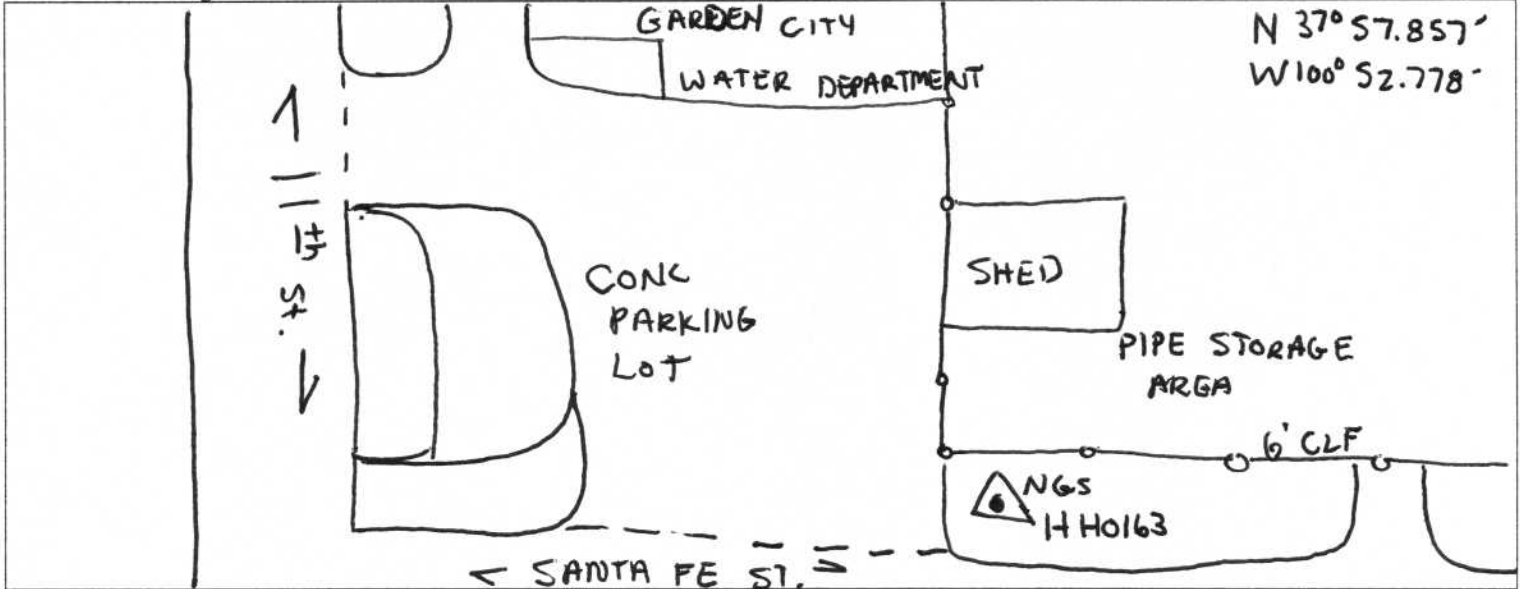


Date(s) (mm/dd/yyyy): 01-28-2012, 2-11-12	Julian Day(s): 028
Project: 2331 KANSAS	Observer: M. SUTTON

Antenna Formulas

4000SSi / 4000SSE Compact L1/L2	Bottom of notch in antenna flange = $0.0069 + (h^2 - (0.0915)^2)^{1/2}$
Novatel DL	Bottom outer edge of ground plane = $0.015 + (h^2 - (0.096)^2)^{1/2}$
Novatel DL4	Top edge of tape notch = $0.025 + (h^2 - (0.1)^2)^{1/2}$

Network Drawing



NETWORK SURVEY ANTENNA INFORMATION

1-28-12

Receiver Serial #: 0005	File Name: 00050283
Code:	Description: NETWORK TO
Stamping: CITY	GCK SPIKE
No. 1 1933	
Session: 4	
Start: 22:31	
End: 23:01	

Measurements
 _____ " _____ m Uncorrected True Vertical
 _____ meters → 2 meters
 _____ feet → _____ m → (mean)

02-11-2012

Receiver Serial #: 0005	File Name: 00050420
Code: 0005	Description: Network to
Stamping: NO. 1 1933	R101 Spike
Session: 1	
Start: 21:02	
End: 21:02	

Measurements
 _____ " _____ m Uncorrected True Vertical
 _____ meters → 2m
 _____ feet → _____ m → (mean)

Receiver Serial #:	File Name:
Code:	Description:
Stamping:	
Session:	
Start:	
End:	

Measurements
 _____ " _____ m Uncorrected True Vertical
 _____ meters → _____ meters
 _____ feet → _____ m → (mean)

Receiver Serial #:	File Name:
Code:	Description:
Stamping:	
Session:	
Start:	
End:	

Measurements
 _____ " _____ m Uncorrected True Vertical
 _____ meters → _____ meters
 _____ feet → _____ m → (mean)

Receiver Serial #:	File Name:
Code:	Description:
Stamping:	
Session:	
Start:	
End:	

Measurements
 _____ " _____ m Uncorrected True Vertical
 _____ meters → _____ meters
 _____ feet → _____ m → (mean)

Code: Numbering Convention: begin with 501, 701, 801, 901

1-499: paneled points	800 series: NGS vertical only
500 series: Sanborn set for base	900 series: NGS horiz. and vertical
700 series: NGS Horizontal only	1' = 0.3048 m; 1" = 0.0254 m

Description Examples: 12" spike, 6" spike, rebar, pk nail, mag nail, Disc in concrete, rod in sleeve, Disc in seawall, etc. AND INCLUDE Airport name point is located at if applicable.

*Attach additional GPS LOG Sheets if necessary