

**LiDAR BASESTATION LOG V1 06/06/07**

**SANBORN**

**NETWORK**

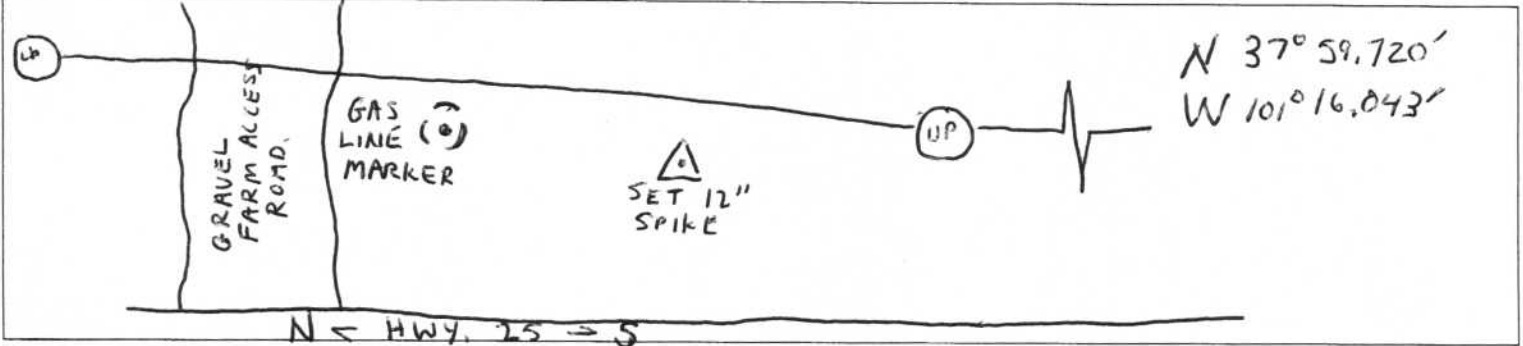
Date (mm/dd/yyyy): <b>2-11-12</b>	LiDAR Mission(s):
Project: <b>233: Kansas LiDAR</b>	Observer: <b>M. SUTTON</b>

**Antenna Formulas**

**NETWORK**

4000SSi / 4000SSE Compact L1/L2	Bottom of notch in antenna flange = $0.0069 + (h^2 - (0.0915)^2)^{1/2}$
Trimble 5700 Zephyr (small)	Top of notch in antenna flange = $0.0073 + (h^2 - (0.0937)^2)^{1/2}$
Trimble 5700 Zephyr Geodetic (large)	Bottom of notch in antenna flange = $0.00891 + (h^2 - (0.16981)^2)^{1/2}$
Novatel DL	Top edge of tape notch = $0.015 + (h^2 - (0.96)^2)^{1/2}$
Novatel DL4	Top edge of tape notch = $0.025 + (h^2 - (0.1)^2)^{1/2}$

**Monument Drawing/Description (Optional)**



**LiDAR BASESTATION ANTENNA INFORMATION**

Receiver Serial #: <b>90004</b>	File Name: <b>00040420</b>	
Code:	Description: <b>N/W TO HH0163</b>	Session: <b>01</b>
Stamping:		Start (UTC): <b>19:03</b>
PID	<b>SET SPIKE NEAR R101</b>	End (UTC): <del>19:03</del> <b>19:53</b>

Measurements

\_\_\_\_\_ " \_\_\_\_\_ m Uncorrected True Vertical Fixed Height Tripod = **2** meters  
 \_\_\_\_\_ feet → \_\_\_\_\_ m → (mean) \_\_\_\_\_ meters

Receiver Serial #: <b>90004</b>	File Name: <b>00040421</b>	
Code:	Description: <b>SPIKE</b>	Session: <b>02</b>
Stamping:	<b>N/W TO JH0231</b>	Start (UTC): <b>19:56</b>
PID	<b>NGS</b>	End (UTC): <del>19:56</del> <b>Receiver Come Un-plugged Re-do</b>

Measurements

\_\_\_\_\_ " \_\_\_\_\_ m Uncorrected True Vertical Fixed Height Tripod = **2** meters  
 \_\_\_\_\_ feet → \_\_\_\_\_ m → (mean) \_\_\_\_\_ meters

Receiver Serial #: <b>90004</b>	File Name: <b>00040422</b>	
Code:	Description: <b>SPIKE</b>	Session: <b>03</b>
Stamping:	<b>NETWORK TO JH0231</b>	Start (UTC): <b>20:28</b>
PID		End (UTC): <b>21:12</b>

Measurements

\_\_\_\_\_ " \_\_\_\_\_ m Uncorrected True Vertical Fixed Height Tripod = **2** meters  
 \_\_\_\_\_ feet → \_\_\_\_\_ m → (mean) \_\_\_\_\_ meters

**90004 FILE: 900040423**  
**Session 04**  
**N/W TO ULS-B**  
**start: 21:14**  
**end: 22:02**  
**2m**

**Code: Numbering Convention: begin with 501, 701, 801, 901**

1- 499: paneled points	800 series: NGS vertical only
500 series: Sanborn set for base	900 series: NGS horiz. and vertical
700 series: NGS Horizontal only	1' = 0.3048 m; 1" = 0.0254 m

**Description Examples:** 12" spike, 6" spike, rebar, pk nail, mag nail, Disc in concrete, rod in sleeve, Disc in seawall, etc. **AND INCLUDE** Airport name if monument at airport