

NETWORK SURVEY LOG V3

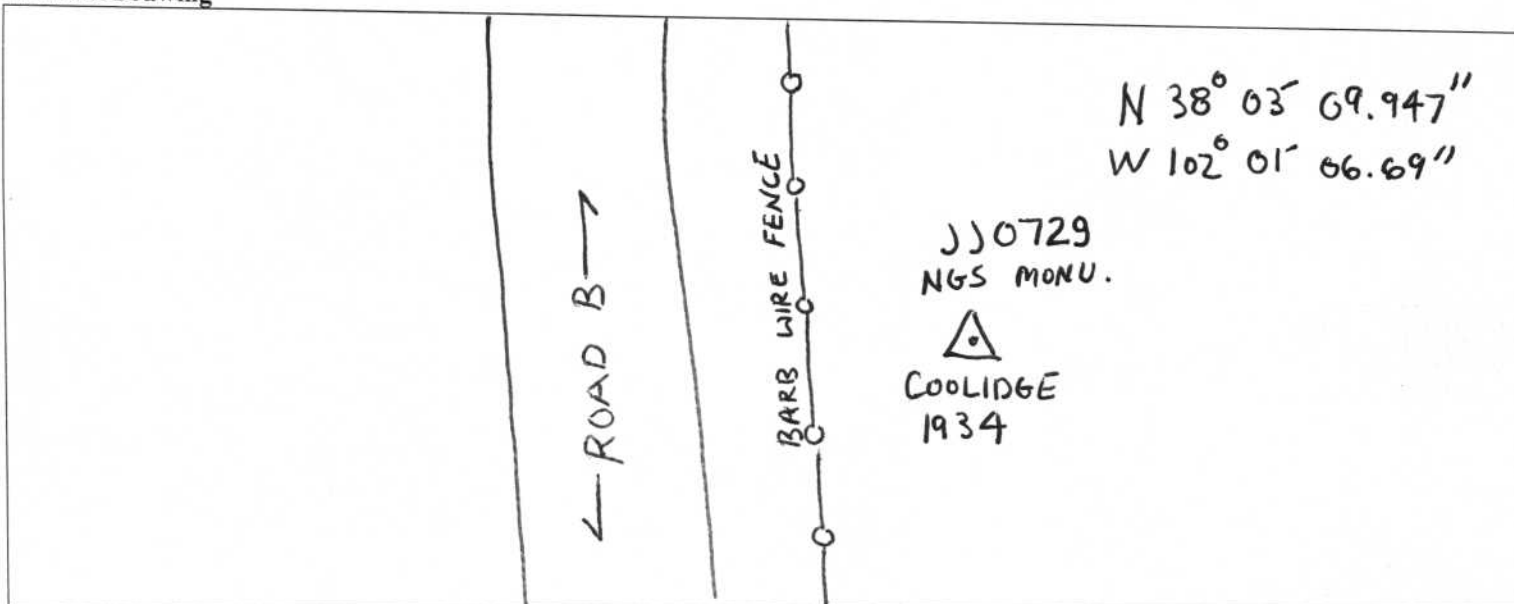


Date(s) (mm/dd/yyyy): 02-12-2012	Julian Day(s):
Project: 2331 Kansas	Observer: Aristotle C. Sutton

Antenna Formulas

4000SSi / 4000SSE Compact L1/L2	Bottom of notch in antenna flange = $0.0069 + (h^2 - (0.0915)^2)^{1/2}$
Novatel DL	Bottom outer edge of ground plane = $0.015 + (h^2 - (0.096)^2)^{1/2}$
Novatel DL4	Top edge of tape notch = $0.025 + (h^2 - (0.1)^2)^{1/2}$

Network Drawing



NETWORK SURVEY ANTENNA INFORMATION

Receiver Serial #: **90004** File Name: **00040422**

Code:	Description:	Session: 3
Stamping: Coolidge	N/W to JH0231	Start: 19:32
1934		End: 20:35

Measurements
 _____ " _____ m Uncorrected True Vertical
 _____ feet → _____ m → (mean) meters → **2** meters

Receiver Serial #: _____ File Name: _____

Code:	Description:	Session:
Stamping:		Start:
		End:

Measurements
 _____ " _____ m Uncorrected True Vertical
 _____ feet → _____ m → (mean) meters → _____ meters

Receiver Serial #: _____ File Name: _____

Code:	Description:	Session:
Stamping:		Start:
		End:

Measurements
 _____ " _____ m Uncorrected True Vertical
 _____ feet → _____ m → (mean) meters → _____ meters

Receiver Serial #: **90004** File Name: **00040423**

Code:	Description:	Session: 4
Stamping: Coolidge	N/W to K556	Start: 20:38
1934		End: 21:50

Measurements
 _____ " _____ m Uncorrected True Vertical
 _____ feet → _____ m → (mean) meters → **2** meters

Receiver Serial #: _____ File Name: **Corrupt pdc file**

Code:	Description:	Session:
Stamping:		Start:
		End:

Measurements
 _____ " _____ m Uncorrected True Vertical
 _____ feet → _____ m → (mean) meters → _____ meters

Code: Numbering Convention: begin with 501, 701, 801, 901

1- 499: paneled points	800 series: NGS vertical only
500 series: Sanborn set for base	900 series: NGS horiz. and vertical
700 series: NGS Horizontal only	1" = 0.3048 m; 1" = 0.0254 m

Description Examples: 12" spike, 6" spike, rebar, pk nail, mag nail, Disc in concrete, rod in sleeve, Disc in seawall, etc. AND INCLUDE Airport name point is located at if applicable.

*Attach additional GPS LOG Sheets if necessary