

LA_Catahoula_Concordia_2017_D17

Survey Report

Contract Number: G17PC00044
Task Order Number: G17PD1255



Contractor Point-of-Contact (POC)

Address: Digital Aerial Solutions, LLC
Telephone: (813) 628-0788
Joshua Helton (VP)
4027 Crescent Park Drive
Riverview, FL 33578

Overview

Digital Aerial Solutions, LLC (DAS) with contract number G17PC00044 was contracted by the United States Geological Survey under task order number G17PD1255 collect a high-resolution LiDAR data set covering 5,160 square miles affecting Catahoula, Concordia, Avoyelles, Point Coupee, St. Martian and portions of St. Landry, Lafayette, Acadia, Vermillion and Iberia parishes in Louisiana. Each of these categories was spread out as evenly as possible throughout the Area of Interest (AOI). The survey was completed using the Global Positioning System (GPS). Each observation was identified in the field and surveyed utilizing GPS receivers, collecting GNSS and GLONASS information and utilizing a Leica Smart-Net RTK network. In accordance with section C.1.e.(i)(c) of the task order, the spatial reference system used was:

Spatial Reference System:

Coordinate System: Universal Transverse Mercator UTM Zone 15

Horizontal Datum: North American Datum 1983 (2011)

Vertical Datum: North American Vertical Datum of 1988

Units: Meters

Geoid Model: Geoid 12B

Section C.1.e.(vii) of the task order outlines the ground control minimum requirements and specifications for this LiDAR project. 21 Supplemental ground control points were collected and used to support the airborne GPS solution and positional accuracy. DAS also collected more than the required number of Non-Vegetated Vertical Accuracy (NVA) and Vegetated Vertical Accuracy (VVA) Quality Checkpoints as stated in the task order. These checkpoints serve as an independent delivery to the client and were not incorporated into the vertical solution.

Glossary of Terms

Term - Definition

ATTN	- Attention
BE	- Bare Earth Checkpoint (see NVA)
CTRL	- Control
DAS	- Digital Aerial Solutions, LLC
Ellip	- Ellipsoid Height
FIPS	- Federal Information Processing Standard
GPS	- Global Positioning Systems
UT	- Urban Terrain (see NVA)
HV	- High Vegetation (see VVA)
ID	- Identification
LV	- Low Vegetation (see VVA)
LiDAR	- Light Detection and Ranging
MV	- Medium Vegetation (see VVA)
NAD83	- North American Datum of 1983
NAVD88	- North American Vertical Datum of 1988
NGS	- National Geodetic Survey
NGTOC	- National Geospatial Technical Operations Center
NVA	- Non-Vegetated Vertical Accuracy
Ortho	- Orthometric Height
POC	- Point of Contact
RTK	- Real Time Kinematics
USGS	- United States Geological Survey
VP	- Vice President
VVA	- Vegetated Vertical Accuracy

TABLE: Ground Control Points

Point ID	Easting	Northing	Ortho
3_GS00002	636192.807	3499335.093	16.994
3_GS00007	602176.796	3474469.542	20.018
3_GS00010	583181.709	3417188.42	13.536
3_GS00011	627897.978	3460014.538	23.483
3_GS00012	611614.359	3453407.427	15.321
3_GS00017	601003.89	3454241.909	13.88
3_GS00018	591915.647	3352202.534	13.752
3_GS00019	610669.732	3366297.148	12.549
3_GS00023	603902.812	3356336.932	6.55
3_GS00003	621279.198	3497796.315	17.754
3_GS00004	599482.794	3509326.095	25.681
3_GS00001	616573.25	3517105.716	17.573
3_GS00006	608491.665	3470809.549	19.05
3_GS00005	607421.396	3483723.11	17.774
3_GS00009	601110.602	3433492.475	15.642
3_GS00013	580458.9	3453925.363	25.991
3_GS00014	603567.003	3424870.46	12.967
3_GS00015	590516.922	3427033.927	15.75
3_GS00016	594002.803	3453548.179	16.227
3_GS00020	613711.429	3380006.775	8.287
3_GS00021	583253.344	3316169.696	3.253

3_GS00002



Point ID: 3_GS00002

Northing: 3499335.093 Meters

Easting: 636192.807 Meters

Orthometric Height: 16.994 Meters

Latitude: 31° 37' 16.00739" N

Longitude: 91° 33' 50.64055" W

Ellipsoid Height: -9.175 Meters

3_GS00007



Point ID: 3_GS00007

Northing: 3474469.542 Meters

Easting: 602176.796 Meters

Orthometric Height: 20.018 Meters

Latitude: 31° 47' 00.83452" N

Longitude: 91° 46' 07.54861" W

Ellipsoid Height: -8.372 Meters

3_GS00010



Point ID: 3_GS00010
Northing: 3417188.42 Meters
Easting: 583181.709 Meters
Orthometric Height: 13.536 Meters
Latitude: 30° 53' 06.22646" N
Longitude: 92° 07' 47.04853" W
Ellipsoid Height: -13.565 Meters

3_GS00011



Point ID: 3_GS00011

Northing: 3460014.538 Meters

Easting: 627897.978 Meters

Orthometric Height: 23.483 Meters

Latitude: 31° 16' 02.60791" N

Longitude: 91° 39' 23.65879" W

Ellipsoid Height: -3.261 Meters

3_GS00012



Point ID: 3_GS00012

Northing: 3453407.427 Meters

Easting: 611614.359 Meters

Orthometric Height: 15.321 Meters

Latitude: 31° 12' 34.06512" N

Longitude: 91° 49' 41.94075" W

Ellipsoid Height: -11.467 Meters

3_GS00017



Point ID: 3_GS00017

Northing: 3454241.909 Meters

Easting: 601003.89 Meters

Orthometric Height: 13.88 Meters

Latitude: 31° 13' 04.64490" N

Longitude: 91° 56' 22.56112" W

Ellipsoid Height: -12.848 Meters

3_GS00018



Point ID: 3_GS00018

Northing: 3352202.534 Meters

Easting: 591915.647 Meters

Orthometric Height: 13.752 Meters

Latitude: 30° 17' 53.08563" N

Longitude: 92° 02' 38.91095" W

Ellipsoid Height: -13.568 Meters

3_GS00019



Point ID: 3_GS00019

Northing: 3366297.148 Meters

Easting: 610669.732 Meters

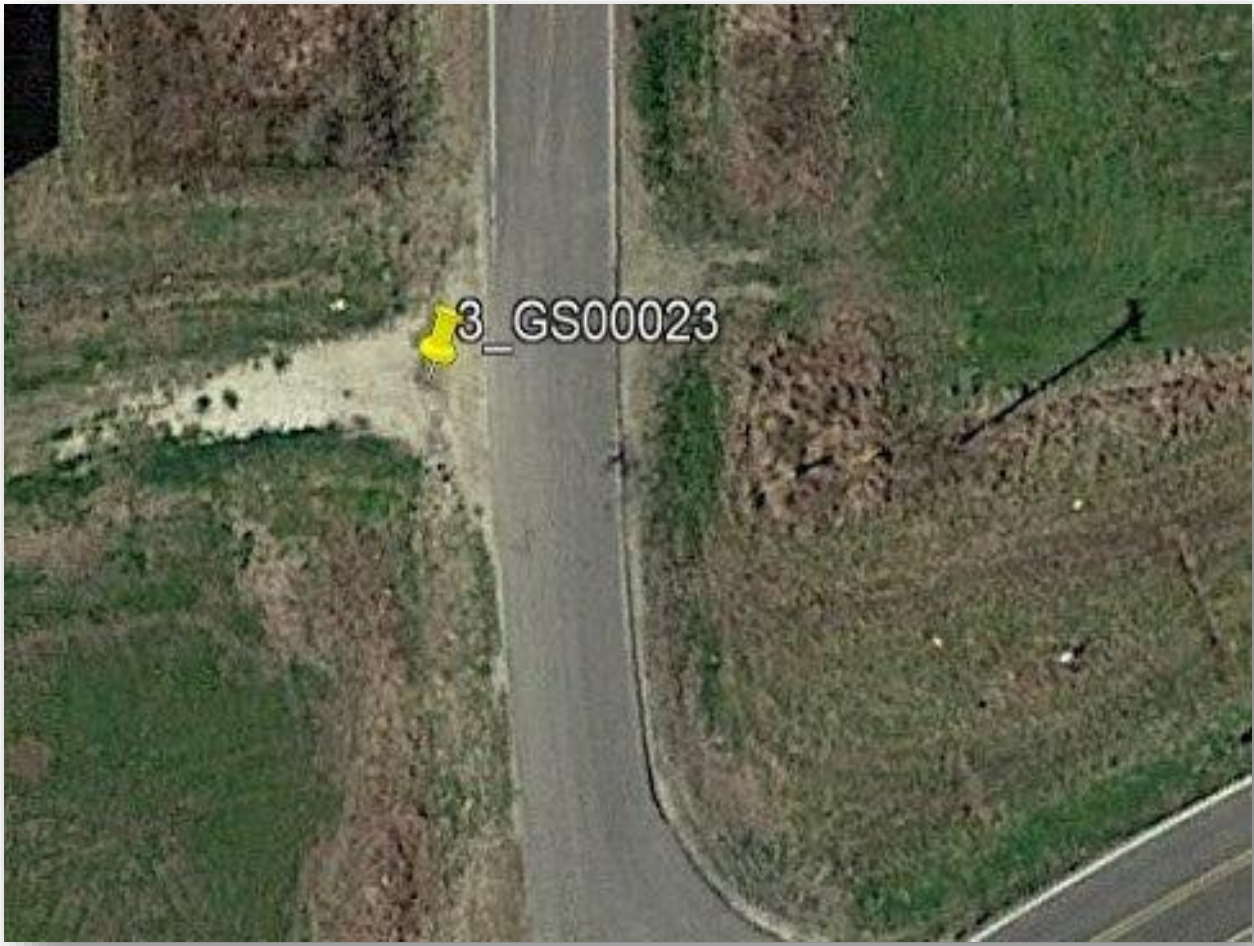
Orthometric Height: 12.549 Meters

Latitude: 30° 25' 25.23141" N

Longitude: 91° 50' 51.55064" W

Ellipsoid Height: -14.83 Meters

3_GS00023



Point ID: 3_GS00023

Northing: 3356336.932 Meters

Easting: 603902.812 Meters

Orthometric Height: 6.55 Meters

Latitude: 30° 20' 03.88489" N

Longitude: 91° 55' 08.73109" W

Ellipsoid Height: -20.778 Meters

3_GS00003



Point ID: 3_GS00003

Northing: 3497796.315 Meters

Easting: 621279.198 Meters

Orthometric Height: 17.754 Meters

Latitude: 31° 36' 32.05573" N

Longitude: 91° 43' 17.25991" W

Ellipsoid Height: -8.326 Meters

3_GS00004



Point ID: 3_GS00004

Northing: 3509326.095 Meters

Easting: 599482.794 Meters

Orthometric Height: 25.681 Meters

Latitude: 31° 42' 54.01863" N

Longitude: 91° 57' 00.12819" W

Ellipsoid Height: -0.129 Meters

3_GS00001



Point ID: 3_GS00001

Northing: 3517105.716 Meters

Easting: 616573.25 Meters

Orthometric Height: 17.573 Meters

Latitude: 31° 47' 00.83452" N

Longitude: 91° 46' 07.54861" W

Ellipsoid Height: -8.372 Meters

3_GS00006



Point ID: 3_GS00006

Northing: 3470809.549 Meters

Easting: 608491.665 Meters

Orthometric Height: 19.05 Meters

Latitude: 31° 22' 00.27103" N

Longitude: 91° 51' 33.13137" W

Ellipsoid Height: -7.403 Meters

3_GS00005



Point ID: 3_GS00005
Northing: 3483723.11 Meters
Easting: 607421.396 Meters
Orthometric Height: 17.774 Meters
Latitude: 31° 28' 59.99894" N
Longitude: 91° 52' 08.60822" W
Ellipsoid Height: -8.423 Meters

3_GS00009



Point ID: 3_GS00009
Northing: 3433492.475 Meters
Easting: 601110.602 Meters
Orthometric Height: 15.642 Meters
Latitude: 31° 01' 50.72398" N
Longitude: 91° 56' 26.02374" W
Ellipsoid Height: -11.323 Meters

3_GS00013



Point ID: 3_GS00013

Northing: 3453925.363 Meters

Easting: 580458.9 Meters

Orthometric Height: 25.991 Meters

Latitude: 31° 13' 00.11417" N

Longitude: 92° 09' 19.06907" W

Ellipsoid Height: -0.709 Meters

3_GS00014



Point ID: 3_GS00014
Northing: 3424870.46 Meters
Easting: 603567.003 Meters
Orthometric Height: 12.967 Meters
Latitude: 30° 57' 09.93003" N
Longitude: 91° 54' 56.54922" W
Ellipsoid Height: -14.061 Meters

3_GS00015



Point ID: 3_GS00015

Northing: 3427033.927 Meters

Easting: 590516.922 Meters

Orthometric Height: 15.75 Meters

Latitude: 30° 58' 24.06410" N

Longitude: 92° 03' 07.65309" W

Ellipsoid Height: -11.27 Meters

3_GS00016



Point ID: 3_GS00016

Northing: 3453548.179 Meters

Easting: 594002.803 Meters

Orthometric Height: 16.227 Meters

Latitude: 31° 12' 44.21988" N

Longitude: 92° 00' 47.36649" W

Ellipsoid Height: -10.495 Meters

3_GS00020



Point ID: 3_GS00020

Northing: 3380006.775 Meters

Easting: 613711.429 Meters

Orthometric Height: 8.287 Meters

Latitude: 30° 32' 49.48924" N

Longitude: 91° 48' 52.15848" W

Ellipsoid Height: -19.053 Meters

3_GS00021



Point ID: 3_GS00021

Northing: 3316169.696 Meters

Easting: 583253.344 Meters

Orthometric Height: 3.253 Meters

Latitude: 29° 58' 24.84401" N

Longitude: 92° 08' 13.37337" W

Ellipsoid Height: -23.402 Meters

Non-Vegetated Vertical Accuracy Checkpoints Bare Earth

The Map shows the overall distribution of the Non-Vegetated Vertical Accuracy Checkpoint, Bare Earth throughout the AOI. The following tables contain a list of the control using Easting, Northing, and Orthometric height. The coordinate system displayed is Universal Transverse Mercator UTM Zone 15, North American Datum 1983 (2011), North American Vertical Datum of 1988, Geoid 12B and using Meters for measurement.

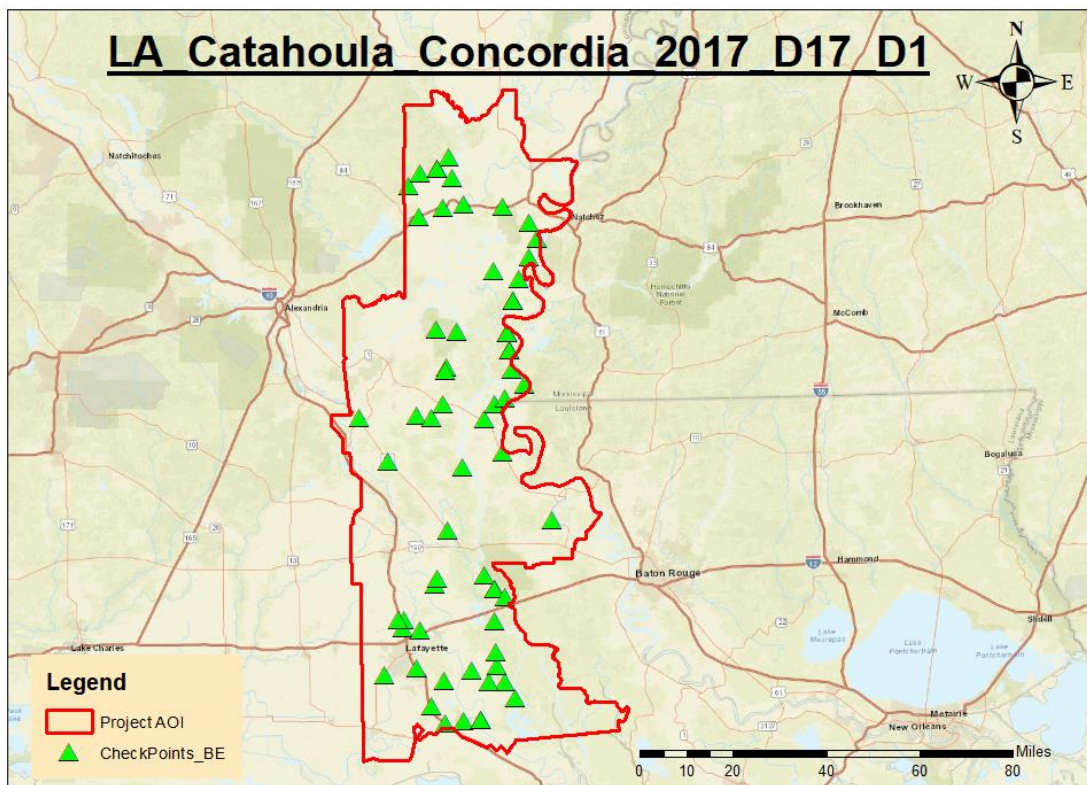


TABLE: Bare Earth

Point ID	Easting	Northing	Ortho
1_GS00002	625085.067	3475452.375	14.182
1_GS00004	628279.633	3497672.884	16.624
1_GS00007	637248.915	3492276.021	16.461
1_GS00008	637294.59	3480113.842	24.97
1_GS00009	640058.895	3486478.4	26.32
1_GS00013	631644.674	3465227.496	13.612
1_GS00017	634003.396	3472614.767	15.221
1_GS00018	605560.123	3510671.327	21.367
1_GS00020	631643.82	3465211.885	13.854
1_GS00021	595515.297	3504770.325	17.657
1_GS00022	609481.409	3514627.253	31.193
1_GS00024	605549.053	3510662.067	21.622
1_GS00026	614720.819	3498682.782	17.413
1_GS00030	599165.202	3494219.386	17.128
1_GS00031	599544.233	3509339.302	26.57
1_GS00033	607809.779	3497279.117	17.238
2_GS00003	607431.814	3429579.671	14.494
2_GS00004	609271.596	3385809.061	6.946
2_GS00005	608771.184	3442249.516	13.708
2_GS00006	608232.701	3441158.483	16.729
2_GS00008	621982.142	3424253.623	13.995
2_GS00011	614494.147	3407814.988	11.433
2_GS00013	605138.55	3455121.881	16.786
2_GS00014	612358.514	3454514.509	14.411
2_GS00016	578836.46	3424852.786	19.176
2_GS00031	608239.17	3319301.984	4.697
2_GS00032	608173.837	3333958.666	3.665
2_GS00033	593793.403	3352129.226	14.942
2_GS00037	605024.172	3366961.943	6.134
2_GS00041	626125.256	3338831.987	1.649
2_GS00042	594069.576	3354866.231	13.708
2_GS00043	592258.041	3354859.501	11.661
2_GS00045	599810.948	3351322.356	6.3
2_GS00047	629150.897	3333442.812	9.684
2_GS00049	622052.287	3370204.004	10.874
2_GS00050	625331.539	3365634.936	8.021
2_GS00054	632789.58	3327835.564	4.416
2_GS00058	614854.944	3319886.333	4.424
2_GS00062	587474.819	3335602.427	6.47

2_GS00064	605785.646	3368987.822	4.862
2_GS00065	603532.44	3324987.604	5.888
2_GS00068	625316.514	3365640.903	9.592
2_GS00073	617402.019	3337508.176	4.791
2_GS00074	629201.028	3362751.805	10.043
2_GS00077	620712.125	3320474.89	5.444
2_GS00079	625720.883	3343610.106	3.793
2_GS00080	625474.808	3354556.295	8.589
2_GS00081	629978.918	3454265.244	23.208
2_GS00082	629916.05	3454240.637	17.078
2_GS00085	625632.524	3429618.209	21.17
2_GS00086	630550.624	3447991.099	22.596
2_GS00087	630528.625	3448014.788	21.812
2_GS00089	635735.403	3436171.87	22.305
2_GS00090	629248.886	3431382.796	21.411
2_GS00092	631456.918	3441388.476	22.45
2_GS00095	645155.636	3389519.493	10.605
2_GS00108	598369.004	3425313.552	13.765
2_GS00187	598312.002	3338272.031	9.926
2_GS00193	620721.498	3320444.982	5.392
2_GS00206	628127.085	3412835.325	12.636
2_GS00053	623603.392	3333237.978	2.039
2_GS00019	588456.758	3409555.665	12.629
2_GS00010	603616.561	3424854.248	13.982
1_GS00014	610731.181	3507640.082	18.559

1_GS00002



Point ID: 1_GS00002

Northing: 3475452.375 Meters

Easting: 625085.067 Meters

Orthometric Height: 14.182 Meters

Latitude: 31° 24' 25.02544" N

Longitude: 91° 41' 03.03027" W

Ellipsoid Height: -12.252 Meters

1_GS00004



Point ID: 1_GS00004
Northing: 3497672.884 Meters
Easting: 628279.633 Meters
Orthometric Height: 16.624 Meters
Latitude: 31° 36' 25.31197" N
Longitude: 91° 38' 51.70147" W
Ellipsoid Height: -9.506 Meters

1_GS00007



Point ID: 1_GS00007
Northing: 3492276.021 Meters
Easting: 637248.915 Meters
Orthometric Height: 16.461 Meters
Latitude: 31° 26' 51.69300" N
Longitude: 91° 33' 19.11717" W
Ellipsoid Height: -9.773 Meters

1_GS00008



Point ID: 1_GS00008

Northing: 3480113.842 Meters

Easting: 637294.59 Meters

Orthometric Height: 24.97 Meters

Latitude: 31° 26' 51.41121" N

Longitude: 91° 33' 18.45418" W

Ellipsoid Height: -1.43 Meters

1_GS00009



Point ID: 1_GS00009

Northing: 3486478.4 Meters

Easting: 640058.895 Meters

Orthometric Height: 26.32 Meters

Latitude: 31° 30' 16.87795" N

Longitude: 91° 31' 30.51414" W

Ellipsoid Height: 0.006 Meters

1_GS00013



Point ID: 1_GS00013

Northing: 3465227.496 Meters

Easting: 631644.674 Meters

Orthometric Height: 13.612 Meters

Latitude: 31° 18' 50.38381" N

Longitude: 91° 36' 59.54358" W

Ellipsoid Height: -13.037 Meters

1_GS00017



Point ID: 1_GS00017
Northing: 3472614.767 Meters
Easting: 634003.396 Meters
Orthometric Height: 15.221 Meters
Latitude: 31° 22' 49.29335" N
Longitude: 91° 35' 26.75397" W
Ellipsoid Height: -11.298 Meters

1_GS00018



Point ID: 1_GS00018

Northing: 3510671.327 Meters

Easting: 605560.123 Meters

Orthometric Height: 21.367 Meters

Latitude: 31° 43' 35.74390" N

Longitude: 91° 53' 08.73222" W

Ellipsoid Height: -4.486 Meters

1_GS00020



Point ID: 1_GS00020

Northing: 3465211.885 Meters

Easting: 631643.82 Meters

Orthometric Height: 13.854 Meters

Latitude: 31° 18' 49.87726" N

Longitude: 91° 36' 59.58329" W

Ellipsoid Height: -12.795 Meters

1_GS00021



Point ID: 1_GS00021
Northing: 3504770.325 Meters
Easting: 595515.297 Meters
Orthometric Height: 17.657 Meters
Latitude: 31° 40' 27.28639" N
Longitude: 91° 59' 32.45322" W
Ellipsoid Height: -8.161 Meters

1_GS00022



Point ID: 1_GS00022
Northing: 3514627.253 Meters
Easting: 609481.409 Meters
Orthometric Height: 31.193 Meters
Latitude: 31° 45' 42.87892" N
Longitude: 91° 50' 38.15364" W
Ellipsoid Height: 5.321 Meters

1_GS00024



Point ID: 1_GS00024

Northing: 3510662.067 Meters

Easting: 605549.053 Meters

Orthometric Height: 21.622 Meters

Latitude: 31° 43' 35.44686" N

Longitude: 91° 53' 09.15642" W

Ellipsoid Height: -4.231 Meters

1_GS00026



Point ID: 1_GS00026
Northing: 3498682.782 Meters
Easting: 614720.819 Meters
Orthometric Height: 17.413 Meters
Latitude: 31° 37' 03.26607" N
Longitude: 91° 47' 25.74004" W
Ellipsoid Height: -8.613 Meters

1_GS00030



Point ID: 1_GS00030
Northing: 3494219.386 Meters
Easting: 599165.202 Meters
Orthometric Height: 17.128 Meters
Latitude: 31° 34' 43.52891" N
Longitude: 91° 57' 17.68649" W
Ellipsoid Height: -8.846 Meters

1_GS00031



Point ID: 1_GS00031

Northing: 3509339.302 Meters

Easting: 599544.233 Meters

Orthometric Height: 26.57 Meters

Latitude: 31° 42' 54.42831" N

Longitude: 91° 56' 57.78929" W

Ellipsoid Height: 0.759 Meters

1_GS00033



Point ID: 1_GS00033

Northing: 3497279.117 Meters

Easting: 607809.779 Meters

Orthometric Height: 17.238 Meters

Latitude: 31° 36' 20.09259" N

Longitude: 91° 51' 48.55898" W

Ellipsoid Height: -8.756 Meters

2_GS00003



Point ID: 2_GS00003
Northing: 3429579.671 Meters
Easting: 607431.814 Meters
Orthometric Height: 14.494 Meters
Latitude: 30° 59' 41.62854" N
Longitude: 91° 52' 29.11355" W
Ellipsoid Height: -12.508 Meters

2_GS00004



Point ID: 2_GS00004

Northing: 3385809.061 Meters

Easting: 609271.596 Meters

Orthometric Height: 6.946 Meters

Latitude: 30° 35' 59.43052" N

Longitude: 91° 51' 36.56363" W

Ellipsoid Height: -20.422 Meters

2_GS00005



Point ID: 2_GS00005

Northing: 3442249.516 Meters

Easting: 608771.184 Meters

Orthometric Height: 13.708 Meters

Latitude: 31° 06' 32.66310" N

Longitude: 91° 51' 33.71328" W

Ellipsoid Height: -13.205 Meters

2_GS00006



Point ID: 2_GS00006

Northing: 3441158.483 Meters

Easting: 608232.701 Meters

Orthometric Height: 16.729 Meters

Latitude: 31° 05' 57.76320" N

Longitude: 91° 51' 54.36552" W

Ellipsoid Height: -10.192 Meters

2_GS00008



Point ID: 2_GS00008

Northing: 3424253.623 Meters

Easting: 621982.142 Meters

Orthometric Height: 13.995 Meters

Latitude: 30° 56' 43.94701" N

Longitude: 91° 43' 21.76322" W

Ellipsoid Height: -13.075 Meters

2_GS00011



Point ID: 2_GS00011

Northing: 3407814.988 Meters

Easting: 614494.147 Meters

Orthometric Height: 11.433 Meters

Latitude: 30° 47' 52.38059" N

Longitude: 91° 48' 11.66645" W

Ellipsoid Height: -15.762 Meters

2_GS00013



Point ID: 2_GS00013

Northing: 3455121.881 Meters

Easting: 605138.55 Meters

Orthometric Height: 16.786 Meters

Latitude: 31° 13' 31.90870" N

Longitude: 91° 53' 45.98374" W

Ellipsoid Height: -9.943 Meters

2_GS00014



Point ID: 2_GS00014
Northing: 3454514.509 Meters
Easting: 612358.514 Meters
Orthometric Height: 14.411 Meters
Latitude: 31° 13' 09.76132" N
Longitude: 91° 49' 13.37677" W
Ellipsoid Height: -12.363 Meters

2_GS00016



Point ID: 2_GS00016
Northing: 3424852.786 Meters
Easting: 578836.46 Meters
Orthometric Height: 19.176 Meters
Latitude: 30° 57' 16.24167" N
Longitude: 92° 10' 28.55620" W
Ellipsoid Height: -7.861 Meters

2_GS00031



Point ID: 2_GS00031

Northing: 3319301.984 Meters

Easting: 608239.17 Meters

Orthometric Height: 4.697 Meters

Latitude: 29° 59' 59.56419" N

Longitude: 91° 52' 40.00688" W

Ellipsoid Height: -21.97 Meters

2_GS00032



Point ID: 2_GS00032

Northing: 3333958.666 Meters

Easting: 608173.837 Meters

Orthometric Height: 3.665 Meters

Latitude: 30° 07' 55.66357" N

Longitude: 91° 52' 37.07314" W

Ellipsoid Height: -23.357 Meters

2_GS00033



Point ID: 2_GS00033

Northing: 3352129.226 Meters

Easting: 593793.403 Meters

Orthometric Height: 14.942 Meters

Latitude: 30° 17' 50.18573" N

Longitude: 92° 01' 28.64456" W

Ellipsoid Height: -12.372 Meters

2_GS00037



Point ID: 2_GS00037

Northing: 3366961.943 Meters

Easting: 605024.172 Meters

Orthometric Height: 6.134 Meters

Latitude: 30° 25' 48.64447" N

Longitude: 91° 54' 22.90001" W

Ellipsoid Height: -21.25 Meters

2_GS00041



Point ID: 2_GS00041

Northing: 3338831.987 Meters

Easting: 626125.256 Meters

Orthometric Height: 1.649 Meters

Latitude: 30° 10' 27.73191" N

Longitude: 91° 41' 24.19525" W

Ellipsoid Height: -25.441 Meters

2_GS00042



Point ID: 2_GS00042

Northing: 3354866.231 Meters

Easting: 594069.576 Meters

Orthometric Height: 13.708 Meters

Latitude: 30° 19' 19.01283" N

Longitude: 92° 01' 17.42361" W

Ellipsoid Height: -13.63 Meters

2_GS00043



Point ID: 2_GS00043

Northing: 3354859.501 Meters

Easting: 592258.041 Meters

Orthometric Height: 11.661 Meters

Latitude: 30° 19' 19.29674" N

Longitude: 92° 02' 25.25332" W

Ellipsoid Height: -15.682 Meters

2_GS00045



Point ID: 2_GS00045

Northing: 3351322.356 Meters

Easting: 599810.948 Meters

Orthometric Height: 6.3 Meters

Latitude: 30° 17' 22.24450" N

Longitude: 91° 57' 43.67103" W

Ellipsoid Height: -20.991 Meters

2_GS00047



Point ID: 2_GS00047

Northing: 3333442.812 Meters

Easting: 629150.897 Meters

Orthometric Height: 9.684 Meters

Latitude: 30° 07' 31.55426" N

Longitude: 91° 39' 33.46071" W

Ellipsoid Height: -17.299 Meters

2_GS00049



Point ID: 2_GS00049

Northing: 3370204.004 Meters

Easting: 622052.287 Meters

Orthometric Height: 10.874 Meters

Latitude: 30° 27' 28.16045" N

Longitude: 91° 43' 43.31399" W

Ellipsoid Height: -16.503 Meters

2_GS00050



Point ID: 2_GS00050

Northing: 3365634.936 Meters

Easting: 625331.539 Meters

Orthometric Height: 8.021 Meters

Latitude: 30° 24' 58.55219" N

Longitude: 91° 41' 42.35251" W

Ellipsoid Height: -19.335 Meters

2_GS00054



Point ID: 2_GS00054

Northing: 3327835.564 Meters

Easting: 632789.58 Meters

Orthometric Height: 4.416 Meters

Latitude: 30° 04' 28.03054" N

Longitude: 91° 37' 20.03772" W

Ellipsoid Height: -22.438 Meters

2_GS00058



Point ID: 2_GS00058

Northing: 3319886.333 Meters

Easting: 614854.944 Meters

Orthometric Height: 4.424 Meters

Latitude: 30° 00' 16.37569" N

Longitude: 91° 48' 32.89181" W

Ellipsoid Height: -22.244 Meters

2_GS00062



Point ID: 2_GS00062

Northing: 3335602.427 Meters

Easting: 587474.819 Meters

Orthometric Height: 6.47 Meters

Latitude: 30° 08' 55.04275" N

Longitude: 92° 05' 30.10547" W

Ellipsoid Height: -20.617 Meters

2_GS00064



Point ID: 2_GS00064

Northing: 3368987.822 Meters

Easting: 605785.646 Meters

Orthometric Height: 4.862 Meters

Latitude: 30° 26' 54.20581" N

Longitude: 91° 53' 53.61880" W

Ellipsoid Height: -22.528 Meters

2_GS00065



Point ID: 2_GS00065

Northing: 3324987.604 Meters

Easting: 603532.44 Meters

Orthometric Height: 5.888 Meters

Latitude: 30° 03' 05.71361" N

Longitude: 91° 55' 33.66730" W

Ellipsoid Height: -20.935 Meters

2_GS00068



Point ID: 2_GS00068

Northing: 3365640.903 Meters

Easting: 625316.514 Meters

Orthometric Height: 9.592 Meters

Latitude: 30° 24' 58.75163" N

Longitude: 91° 41' 42.91299" W

Ellipsoid Height: -17.764 Meters

2_GS00073



Point ID: 2_GS00073

Northing: 3337508.176 Meters

Easting: 617402.019 Meters

Orthometric Height: 4.791 Meters

Latitude: 30° 09' 47.87792" N

Longitude: 91° 46' 50.82093" W

Ellipsoid Height: -22.29 Meters

2_GS00074



Point ID: 2_GS00074

Northing: 3362751.805 Meters

Easting: 629201.028 Meters

Orthometric Height: 10.043 Meters

Latitude: 30° 23' 23.44329" N

Longitude: 91° 39' 18.63387" W

Ellipsoid Height: -17.294 Meters

2_GS00077



Point ID: 2_GS00077

Northing: 3320474.89 Meters

Easting: 620712.125 Meters

Orthometric Height: 5.444 Meters

Latitude: 30° 00' 33.46440" N

Longitude: 91° 44' 54.06757" W

Ellipsoid Height: -21.235 Meters

2_GS00079



Point ID: 2_GS00079

Northing: 3343610.106 Meters

Easting: 625720.883 Meters

Orthometric Height: 3.793 Meters

Latitude: 30° 13' 03.07191" N

Longitude: 91° 41' 37.26282" W

Ellipsoid Height: -23.371 Meters

2_GS00080



Point ID: 2_GS00080

Northing: 3354556.295 Meters

Easting: 625474.808 Meters

Orthometric Height: 8.589 Meters

Latitude: 30° 18' 58.68289" N

Longitude: 91° 41' 41.76495" W

Ellipsoid Height: -18.701 Meters

2_GS00081



Point ID: 2_GS00081

Northing: 3454265.244 Meters

Easting: 629978.918 Meters

Orthometric Height: 23.208 Meters

Latitude: 31° 12' 55.08103" N

Longitude: 91° 38' 07.67402" W

Ellipsoid Height: -3.638 Meters

2_GS00082



Point ID: 2_GS00082
Northing: 3454240.637 Meters
Easting: 629916.05 Meters
Orthometric Height: 17.078 Meters
Latitude: 31° 12' 54.30718" N
Longitude: 91° 38' 10.06090" W
Ellipsoid Height: -9.768 Meters

2_GS00085



Point ID: 2_GS00085

Northing: 3429618.209 Meters

Easting: 625632.524 Meters

Orthometric Height: 21.17 Meters

Latitude: 30° 59' 36.39502" N

Longitude: 91° 41' 02.95180" W

Ellipsoid Height: -5.884 Meters

2_GS00086



Point ID: 2_GS00086

Northing: 3447991.099 Meters

Easting: 630550.624 Meters

Orthometric Height: 22.596 Meters

Latitude: 31° 09' 31.10886" N

Longitude: 91° 37' 49.00786" W

Ellipsoid Height: -4.343 Meters

2_GS00087



Point ID: 2_GS00087

Northing: 3448014.788 Meters

Easting: 630528.625 Meters

Orthometric Height: 21.812 Meters

Latitude: 31° 09' 31.88696" N

Longitude: 91° 37' 49.82752" W

Ellipsoid Height: -5.126 Meters

2_GS00089



Point ID: 2_GS00089
Northing: 3436171.87 Meters
Easting: 635735.403 Meters
Orthometric Height: 22.305 Meters
Latitude: 31° 03' 05.17844" N
Longitude: 91° 34' 38.95071" W
Ellipsoid Height: -4.726 Meters

2_GS00090



Point ID: 2_GS00090

Northing: 3431382.796 Meters

Easting: 629248.886 Meters

Orthometric Height: 21.411 Meters

Latitude: 31° 00' 32.28999" N

Longitude: 91° 38' 45.81674" W

Ellipsoid Height: -5.642 Meters

2_GS00092



Point ID: 2_GS00092

Northing: 3441388.476 Meters

Easting: 631456.918 Meters

Orthometric Height: 22.45 Meters

Latitude: 31° 05' 56.33307" N

Longitude: 91° 37' 17.88621" W

Ellipsoid Height: -4.548 Meters

2_GS00095



Point ID: 2_GS00095
Northing: 3389519.493 Meters
Easting: 645155.636 Meters
Orthometric Height: 10.605 Meters
Latitude: 30° 37' 46.18281" N
Longitude: 91° 29' 07.49512" W
Ellipsoid Height: -16.689 Meters

2_GS00108



Point ID: 2_GS00108

Northing: 3425313.552 Meters

Easting: 598369.004 Meters

Orthometric Height: 13.765 Meters

Latitude: 30° 57' 25.92321" N

Longitude: 91° 58' 12.28046" W

Ellipsoid Height: -13.261 Meters

2_GS00187



Point ID: 2_GS00187
Northing: 3338272.031 Meters
Easting: 598312.002 Meters
Orthometric Height: 9.926 Meters
Latitude: 30° 10' 18.78181" N
Longitude: 91° 58' 44.15835" W
Ellipsoid Height: -17.186 Meters

2_GS00193



Point ID: 2_GS00193

Northing: 3320444.982 Meters

Easting: 620721.498 Meters

Orthometric Height: 5.392 Meters

Latitude: 30° 00' 32.48962" N

Longitude: 91° 44' 53.72994" W

Ellipsoid Height: -21.286 Meters

2_GS00206



Point ID: 2_GS00206

Northing: 3412835.325 Meters

Easting: 628127.085 Meters

Orthometric Height: 12.636 Meters

Latitude: 30° 50' 30.40149" N

Longitude: 91° 39' 36.51746" W

Ellipsoid Height: -14.548 Meters

2_GS00053



Point ID: 2_GS00053

Northing: 3333237.978 Meters

Easting: 623603.392 Meters

Orthometric Height: 2.039 Meters

Latitude: 30° 07' 26.97232" N

Longitude: 91° 43' 00.81984" W

Ellipsoid Height: -24.952 Meters

2_GS00019



Point ID: 2_GS00019

Northing: 3409555.665 Meters

Easting: 588456.758 Meters

Orthometric Height: 12.629 Meters

Latitude: 30° 48' 56.93540" N

Longitude: 92° 04' 30.76994" W

Ellipsoid Height: -14.542 Meters

2_GS00010



Point ID: 2_GS00010
Northing: 3424854.248 Meters
Easting: 603616.561 Meters
Orthometric Height: 13.982 Meters
Latitude: 30° 57' 09.38783" N
Longitude: 91° 54' 54.68762" W
Ellipsoid Height: -11.302 Meters

1_GS00014



Point ID: 1_GS00014

Northing: 3507640.082 Meters

Easting: 610731.181 Meters

Orthometric Height: 18.559 Meters

Latitude: 31° 41' 55.55008" N

Longitude: 91° 49' 53.50169" W

Ellipsoid Height: -7.363 Meters

Non-Vegetated Vertical Accuracy Checkpoints Urban Terrain

The Map shows the overall distribution of the Non-Vegetated Vertical Accuracy Checkpoint, Urban Terrain throughout the AOI. The following tables contain a list of the control using Easting, Northing, and Orthometric height. The coordinate system displayed is Universal Transverse Mercator UTM Zone 15, North American Datum 1983 (2011), North American Vertical Datum of 1988, Geoid 12B and using Meters for measurement.

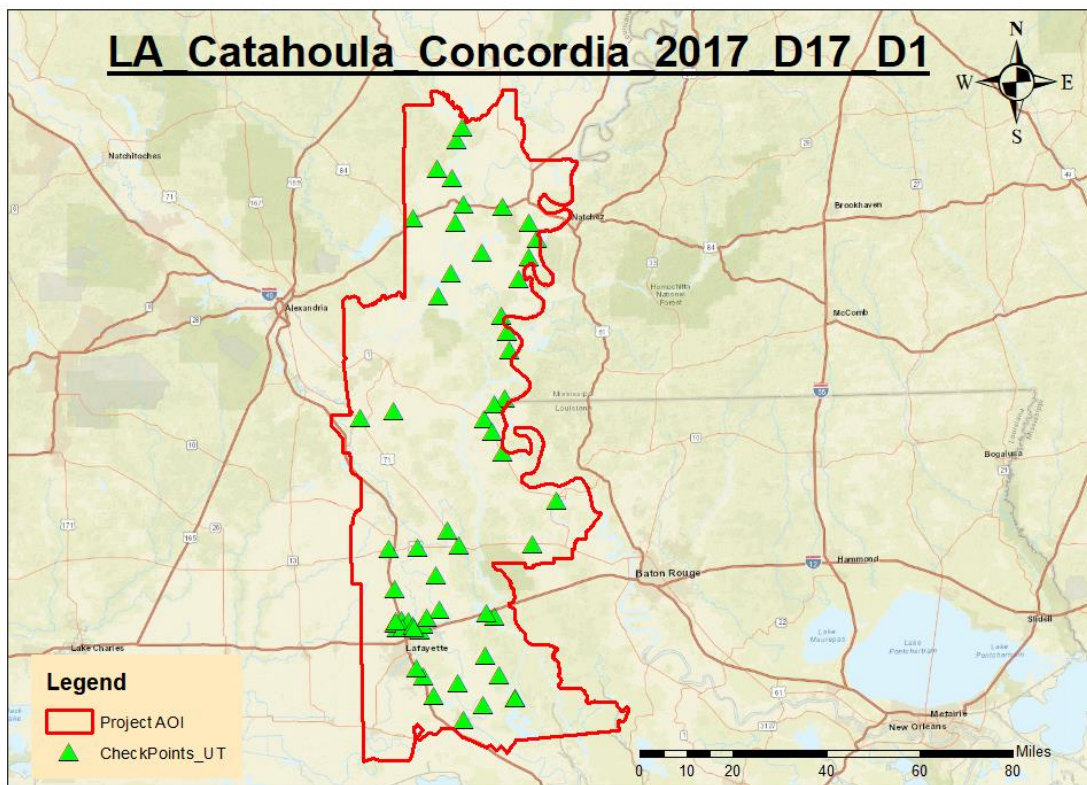


TABLE: Urban Terrain

Point ID	Easting	Northing	Ortho
2_GS00018	578851.634	3424766.064	18.298
2_GS00020	622011.693	3424265.93	14.848
1_GS00001	621026.397	3482034.442	16.477
1_GS00003	640044.118	3486471.016	24.642
1_GS00006	637276.974	3480122.289	23.188
1_GS00011	628251.504	3497692.465	17.44
1_GS00012	612385.7	3520862.09	17.643
1_GS00015	637259.042	3492277.689	16.714
1_GS00016	614186.442	3525062.401	16.698
1_GS00019	633982.296	3472618.091	15.921
1_GS00023	597248.794	3493929.788	16.344
1_GS00025	605521.26	3510657.335	22.29
1_GS00027	610750.224	3507630.915	19.458
1_GS00028	614729.876	3498650.112	17.365
1_GS00029	611970.997	3492011.484	17.59
1_GS00032	610316.289	3474847.048	18.77
2_GS00001	627872.799	3460021.552	20.884
2_GS00002	606009.831	3466728.745	15.757
2_GS00007	609239.54	3385778.511	8.795
2_GS00009	590521.76	3427031.39	15.718
2_GS00022	613041.588	3380830.823	6.717
2_GS00034	590777.496	3365381.396	14.777
2_GS00035	593430.46	3354943.299	13.718
2_GS00036	595852.812	3354572.959	5.945
2_GS00038	606275.584	3358418.458	8.072
2_GS00039	591912.839	3352209.581	14.145
2_GS00040	591054.917	3353490.724	14.817
2_GS00044	593810.029	3352156.663	15.15
2_GS00046	588767.927	3379369.81	20.692
2_GS00048	605187.348	3370407.163	5.412
2_GS00051	599767.334	3351307.757	6.11
2_GS00052	600727.042	3353415.656	6.879
2_GS00055	614715.189	3320150.014	5.826
2_GS00056	601042.631	3335492.737	7.082
2_GS00057	597467.99	3352942.802	7.581
2_GS00059	622359.214	3342375.636	4.389
2_GS00060	632797.631	3327850.794	6.192

2_GS00061	591418.627	3354436.421	12.103
2_GS00063	604523.491	3328488.544	7.301
2_GS00066	601951.167	3355623.841	5.183
2_GS00067	598888.921	3379877.583	8.738
2_GS00069	597781.203	3352026.683	5.613
2_GS00070	627201.191	3335795.143	3.994
2_GS00071	612923.284	3332883.967	4.564
2_GS00072	598297.511	3338245.884	10.413
2_GS00075	625617.14	3355914.999	8.983
2_GS00076	621651.774	3325518.37	6.339
2_GS00078	622807.759	3357376.972	6.964
2_GS00083	630541.554	3448005.275	22.051
2_GS00084	629931.1	3454293.189	20.739
2_GS00091	629212.39	3431386.018	20.875
2_GS00094	625641.164	3429494.173	15.722
2_GS00096	638399.507	3381177.242	8.677
2_GS00097	624800.951	3420088.813	14.28
2_GS00098	647028.906	3396039.811	9.977
3_GS00022	632797.636	3327850.795	6.198
3_GS00008	628100.396	3412750.892	13.045

2_GS00018



Point ID: 2_GS00018
Northing: 3424766.064 Meters
Easting: 578851.634 Meters
Orthometric Height: 18.298 Meters
Latitude: 30° 48' 56.93540" N
Longitude: 92° 04' 30.76994" W
Ellipsoid Height: -8.74 Meters

2_GS00020



Point ID: 2_GS00020

Northing: 342465.93 Meters

Easting: 622011.693 Meters

Orthometric Height: 14.848 Meters

Latitude: 30° 56' 43.94701" N

Longitude: 91° 43' 21.76322" W

Ellipsoid Height: -12.222 Meters

1_GS00001



Point ID: 1_GS00001

Northing: 3482034.442 Meters

Easting: 621026.397 Meters

Orthometric Height: 16.477 Meters

Latitude: 31° 28' 00.31920" N

Longitude: 91° 43' 33.80872" W

Ellipsoid Height: -9.824Meters

1_GS00003



Point ID: 1_GS00003

Northing: 3486471.016 Meters

Easting: 640044.118 Meters

Orthometric Height: 24.642 Meters

Latitude: 31° 30' 16.64465" N

Longitude: 91° 31' 31.07793" W

Ellipsoid Height: -1.672 Meters

1_GS00006



Point ID: 1_GS00006

Northing: 3480122.289 Meters

Easting: 637276.974 Meters

Orthometric Height: 23.188 Meters

Latitude: 31° 47' 24.47945" N

Longitude: 91° 34' 42.43475" W

Ellipsoid Height: -3.212 Meters

1_GS00011



Point ID: 1_GS00011

Northing: 3497692.465 Meters

Easting: 628251.504 Meters

Orthometric Height: 17.44 Meters

Latitude: 31° 36' 25.95911" N

Longitude: 91° 38' 52.75955" W

Ellipsoid Height: -8.69 Meters

1_GS00012



Point ID: 1_GS00012

Northing: 3520862.09 Meters

Easting: 612385.7 Meters

Orthometric Height: 17.643 Meters

Latitude: 31° 49' 04.32524" N

Longitude: 91° 48' 45.18180" W

Ellipsoid Height: -8.255 Meters

1_GS00015



Point ID: 1_GS00015

Northing: 3492277.689 Meters

Easting: 637259.042 Meters

Orthometric Height: 16.714 Meters

Latitude: 31° 33' 26.39500" N

Longitude: 91° 33' 13.72281" W

Ellipsoid Height: -9.52 Meters

1_GS00016



Point ID: 1_GS00016

Northing: 352062.401 Meters

Easting: 614186.442 Meters

Orthometric Height: 166.98 Meters

Latitude: 31° 51' 20.07419" N

Longitude: 91° 47' 34.92453" W

Ellipsoid Height: -9.231 Meters

1_GS00019



Point ID: 1_GS00019

Northing: 3472618.091 Meters

Easting: 633982.296 Meters

Orthometric Height: 15.921 Meters

Latitude: 31° 22' 49.41006" N

Longitude: 91° 35' 27.55098" W

Ellipsoid Height: -10.598 Meters

1_GS00023



Point ID: 1_GS00023
Northing: 3493929.788 Meters
Easting: 597248.794 Meters
Orthometric Height: 16.44 Meters
Latitude: 31° 34' 34.71287" N
Longitude: 91° 58' 30.48765" W
Ellipsoid Height: -9.621 Meters

1_GS00025



Point ID: 1_GS00025

Northing: 3510657.335 Meters

Easting: 605521.26 Meters

Orthometric Height: 22.29 Meters

Latitude: 31° 43' 35.30244" N

Longitude: 91° 53' 10.21422" W

Ellipsoid Height: -3.563 Meters

1_GS00027



Point ID: 1_GS00027

Northing: 3507630.915 Meters

Easting: 610750.244 Meters

Orthometric Height: 19.458 Meters

Latitude: 31° 43' 55.24574" N

Longitude: 91° 49 '52.78215" W

Ellipsoid Height: -6.465 Meters

1_GS00028



Point ID: 1_GS00028

Northing: 3498650.112 Meters

Easting: 614729.876 Meters

Orthometric Height: 17.365 Meters

Latitude: 31° 37' 02.20192" N

Longitude: 91° 47' 25.41009" W

Ellipsoid Height: -8.662 Meters

1_GS00029



Point ID: 1_GS00029
Northing: 3492011.484 Meters
Easting: 611970.997 Meters
Orthometric Height: 17.59 Meters
Latitude: 31° 33' 27.60073" N
Longitude: 91° 49' 12.82211" W
Ellipsoid Height: -8.502 Meters

1_GS00032



Point ID: 1_GS00032

Northing: 3474847.048 Meters

Easting: 610316.289 Meters

Orthometric Height: 18.77 Meters

Latitude: 31° 24' 10.76937" N

Longitude: 91° 50' 22.46154" W

Ellipsoid Height: -7.609 Meters

2_GS00001



Point ID: 2_GS00001

Northing: 3460021.552 Meters

Easting: 627872.799 Meters

Orthometric Height: 20.884 Meters

Latitude: 30° 16' 02.84562" N

Longitude: 91° 39' 24.60748" W

Ellipsoid Height: -5.86 Meters

2_GS00002



Point ID: 2_GS00002

Northing: 3466728.745 Meters

Easting: 606009.831Meters

Orthometric Height: 15.757 Meters

Latitude: 31°19' 48.56997" N

Longitude: 91° 53' 08.62686" W

Ellipsoid Height: -10.762 Meters

2_GS00007



Point ID: 2_GS00007
Northing: 3385778.511 Meters
Easting: 609239.54Meters
Orthometric Height: 8.795 Meters
Latitude: 30° 35' 59.43052" N
Longitude: 91° 51' 36.56363" W
Ellipsoid Height: -18.573 Meters

2_GS00009



Point ID: 2_GS00009

Northing: 342701.39 Meters

Easting: 590521.76 Meters

Orthometric Height: 15.718 Meters

Latitude: 30° 58' 23.968037" N

Longitude: 92° 03' 07.47151" W

Ellipsoid Height: -11.302 Meters

2_GS00022



Point ID: 2_GS00022

Northing: 33808030.823 Meters

Easting: 613041.588 Meters

Orthometric Height: 6.717 Meters

Latitude: 30° 33' 16.48163" N

Longitude: 91° 49' 16.97150" W

Ellipsoid Height: -20.669 Meters

2_GS00034



Point ID: 2_GS00034

Northing: 3365381.396 Meters

Easting: 590777.496 Meters

Orthometric Height: 14.777 Meters

Latitude: 30° 25' 05.14409" N

Longitude: 92° 03' 18.37156" W

Ellipsoid Height: -12.622 Meters

2_GS00035



Point ID: 2_GS00035

Northing: 3354943.299 Meters

Easting: 593430.46 Meters

Orthometric Height: 13.718 Meters

Latitude: 31° 19' 21.69457" N

Longitude: 92° 01' 41.32863" W

Ellipsoid Height: -13.622 Meters

2_GS00036



Point ID: 2_GS00036

Northing: 3354572.959 Meters

Easting: 595852.812 Meters

Orthometric Height: 5.945 Meters

Latitude: 30° 19' 08.98256" N

Longitude: 92° 00' 10.75252" W

Ellipsoid Height: -21.386 Meters

2_GS00038



Point ID: 2_GS00038

Northing: 335841.458 Meters

Easting: 606275.584 Meters

Orthometric Height: 8.072 Meters

Latitude: 30° 21' 10.75178" N

Longitude: 92° 53' 39.12197" W

Ellipsoid Height: -19.268 Meters

2_GS00039



Point ID: 2_GS00039
Northing: 3352209.581 Meters
Easting: 591912.839 Meters
Orthometric Height: 14.145 Meters
Latitude: 30° 17' 53.31530" N
Longitude: 92° 02' 39.01384" W
Ellipsoid Height: -13.175 Meters

2_GS00040



Point ID: 2_GS00040
Northing: 3353490.724 Meters
Easting: 591054.917 Meters
Orthometric Height: 14.817 Meters
Latitude: 30° 18' 35.16365" N
Longitude: 91° 03' 10.72859" W
Ellipsoid Height: -12.518 Meters

2_GS00044



Point ID: 2_GS00044
Northing: 3352156.663 Meters
Easting: 593810.29 Meters
Orthometric Height: 15.15 Meters
Latitude: 30° 17' 51.07234" N
Longitude: 92° 01' 28.01338" W
Ellipsoid Height: -12.164 Meters

2_GS00046



Point ID: 2_GS00046

Northing: 3379369.81 Meters

Easting: 588767.927 Meters

Orthometric Height: 20.692 Meters

Latitude: 30° 32' 36.38629" N

Longitude: 92° 04' 28.42258" W

Ellipsoid Height: -6.668 Meters

2_GS00048



Point ID: 2_GS00048
Northing: 3370407.163 Meters
Easting: 605187.348 Meters
Orthometric Height: 5.412 Meters
Latitude: 30° 27' 40.49539" N
Longitude: 91° 54' 15.53243" W
Ellipsoid Height: -21.983 Meters

2_GS00051



Point ID: 2_GS00051

Northing: 3351307.757 Meters

Easting: 599767.334 Meters

Orthometric Height: 6.11 Meters

Latitude: 30° 17' 21.78321" N

Longitude: 91° 57' 45.30844" W

Ellipsoid Height: -21.181 Meters

2_GS00052



Point ID: 2_GS00052

Northing: 3353415.656 Meters

Easting: 600727.042 Meters

Orthometric Height: 6.879 Meters

Latitude: 30° 18' 29.96523" N

Longitude: 92° 57 ' 08.65988" W

Ellipsoid Height: -20.431Meters

2_GS00055



Point ID: 2_GS00055

Northing: 3320150.014 Meters

Easting: 614715.189 Meters

Orthometric Height: 5.826 Meters

Latitude: 30° 00' 24.98759" N

Longitude: 91° 48' 38.00521" W

Ellipsoid Height: -20.85 Meters

2_GS00056



Point ID: 2_GS00056

Northing: 3335492.737 Meters

Easting: 601042.631 Meters

Orthometric Height: 7.082 Meters

Latitude: 30° 08' 47.69829" N

Longitude: 91° 57' 03.03150" W

Ellipsoid Height: -19.976 Meters

2_GS00057



Point ID: 2_GS00057
Northing: 3352942.802 Meters
Easting: 597467.99 Meters
Orthometric Height: 7.851 Meters
Latitude: 30° 15' 15.56707" N
Longitude: 91° 59' 10.842443" W
Ellipsoid Height: -19.732 Meters

2_GS00059



Point ID: 2_GS00059

Northing: 33342375.636 Meters

Easting: 622359.214 Meters

Orthometric Height: 4.389 Meters

Latitude: 30° 12' 24.21322" N

Longitude: 91° 43' 443.49923" W

Ellipsoid Height: -22.763 Meters

2_GS00060



Point ID: 2_GS00060

Northing: 3327850.794 Meters

Easting: 632797.631 Meters

Orthometric Height: 6.192 Meters

Latitude: 30° 04' 28.52208" N

Longitude: 91° 37' 19.73008" W

Ellipsoid Height: -20.652 Meters

2_GS00061



Point ID: 2_GS00061

Northing: 3354436.421 Meters

Easting: 591418.627 Meters

Orthometric Height: 12.103 Meters

Latitude: 30° 19' 05.78357" N

Longitude: 92° 02' 56.81556" W

Ellipsoid Height: -15.239 Meters

2_GS00063



Point ID: 2_GS00063

Northing: 3328488.544 Meters

Easting: 604523.491 Meters

Orthometric Height: 7.301 Meters

Latitude: 30° 04' 59.12897" N

Longitude: 91° 54' 55.42292" W

Ellipsoid Height: -19.602 Meters

2_GS00066



Point ID: 2_GS00066
Northing: 3355623.841 Meters
Easting: 601951.167 Meters
Orthometric Height: 5.183 Meters
Latitude: 30° 19' 41.32110" N
Longitude: 91° 56' 22.06123" W
Ellipsoid Height: -22.142 Meters

2_GS00067



Point ID: 2_GS00067

Northing: 3379877.583 Meters

Easting: 598888.921 Meters

Orthometric Height: 8.738 Meters

Latitude: 30° 32' 50.02661" N

Longitude: 91° 58' 08.44313" W

Ellipsoid Height: -18.64 Meters

2_GS00069



Point ID: 2_GS00068
Northing: 3352026.683 Meters
Easting: 597781.203 Meters
Orthometric Height: 5.613 Meters
Latitude: 30° 17' 45.71874" N
Longitude: 91° 58' 59.40646" W
Ellipsoid Height: -21.69 Meters

2_GS00070



Point ID: 2_GS00070

Northing: 3335795.143 Meters

Easting: 617402.019 Meters

Orthometric Height: 3.994 Meters

Latitude: 30° 08' 48.69445" N

Longitude: 91° 40' 45.29011" W

Ellipsoid Height: -23.039 Meters

2_GS00071



Point ID: 2_GS00071

Northing: 3332883.967 Meters

Easting: 612923.284 Meters

Orthometric Height: 4.564 Meters

Latitude: 30° 07' 19.20467" N

Longitude: 91° 49' 40.00857" W

Ellipsoid Height: -22.432 Meters

2_GS00072



Point ID: 2_GS00072
Northing: 3338245.884 Meters
Easting: 598297.511 Meters
Orthometric Height: 10.413 Meters
Latitude: 30° 10' 17.93673" N
Longitude: 91° 58' 44.70884" W
Ellipsoid Height: -16.698 Meters

2_GS00075



Point ID: 2_GS00075
Northing: 3355914.999 Meters
Easting: 625617.14 Meters
Orthometric Height: 8.983 Meters
Latitude: 30° 19' 42.75843" N
Longitude: 91° 41' 35.85094" W
Ellipsoid Height: -18.318 Meters

2_GS00076



Point ID: 2_GS00076

Northing: 3325518.37 Meters

Easting: 621651.774 Meters

Orthometric Height: 6.339 Meters

Latitude: 30° 03' 58.68289" N

Longitude: 91° 41' 16.92428" W

Ellipsoid Height: -20.478 Meters

2_GS00078



Point ID: 2_GS00078

Northing: 3357376.972 Meters

Easting: 622807.759 Meters

Orthometric Height: 6.964 Meters

Latitude: 31° 20' 31.28082" N

Longitude: 91° 43' 20.41872" W

Ellipsoid Height: -20.35 Meters

2_GS00083



Point ID: 2_GS00083
Northing: 3448005.275 Meters
Easting: 630541.554 Meters
Orthometric Height: 22.051 Meters
Latitude: 31° 12' 56.00769" N
Longitude: 91° 38' 09.46773" W
Ellipsoid Height: -4.888 Meters

2_GS00084



Point ID: 2_GS00084
Northing: 3454293.189 Meters
Easting: 629931.1 Meters
Orthometric Height: 20.739 Meters
Latitude: 31° 12' 56.00769" N
Longitude: 91° 38' 09.46773" W
Ellipsoid Height: -6.106 Meters

2_GS00091



Point ID: 2_GS00091

Northing: 3431386.018 Meters

Easting: 629212.39 Meters

Orthometric Height: 20.875 Meters

Latitude: 31° 00' 32.40907" N

Longitude: 91° 38' 47.19126" W

Ellipsoid Height: -6.179 Meters

2_GS00094



Point ID: 2_GS00094

Northing: 3429494.173 Meters

Easting: 625641.164 Meters

Orthometric Height: 15.722 Meters

Latitude: 31° 59' 32.36359" N

Longitude: 91° 41' 02.68143" W

Ellipsoid Height: -11.333 Meters

2_GS00096



Point ID: 2_GS00096
Northing: 3381177.242 Meters
Easting: 638399.507 Meters
Orthometric Height: 8.677 Meters
Latitude: 30° 33' 18.15248" N
Longitude: 91° 33' 25.22346" W
Ellipsoid Height: -18.658 Meters

2_GS00097



Point ID: 2_GS00097

Northing: 3420088.813 Meters

Easting: 624800.951 Meters

Orthometric Height: 14.28 Meters

Latitude: 31° 54' 27.24259" N

Longitude: 91° 41' 38.51171" W

Ellipsoid Height: -12.831 Meters

2_GS00098



Point ID: 2_GS00098

Northing: 3396039.811 Meters

Easting: 647028.906 Meters

Orthometric Height: 9.977 Meters

Latitude: 31° 41' 17.09642" N

Longitude: 91° 77' 53.80441" W

Ellipsoid Height: -17.305 Meters

3_GS00022



Point ID: 3_GS00022

Northing: 3327850.795 Meters

Easting: 632797.636 Meters

Orthometric Height: 6.198 Meters

Latitude: 30° 04' 28.52208" N

Longitude: 91° 31' 19.73008" W

Ellipsoid Height: -20.652 Meters

3_GS00008



Point ID: 3_GS00008

Northing: 3412750.892 Meters

Easting: 628100.396 Meters

Orthometric Height: 13.045 Meters

Latitude: 30° 50' 27.66987" N

Longitude: 91° 39' 37.56007" W

Ellipsoid Height: -14.14Meters

Vegetated Vertical Accuracy Checkpoints Low Vegetation

The Map shows the overall distribution of the Vegetated Vertical Accuracy Checkpoint, Low Vegetation throughout the AOI. The following tables contain a list of the control using Easting, Northing, and Orthometric height. The coordinate system displayed is Universal Transverse Mercator UTM Zone 15, North American Datum 1983 (2011), North American Vertical Datum of 1988, Geoid 12B and using Meters for measurement.

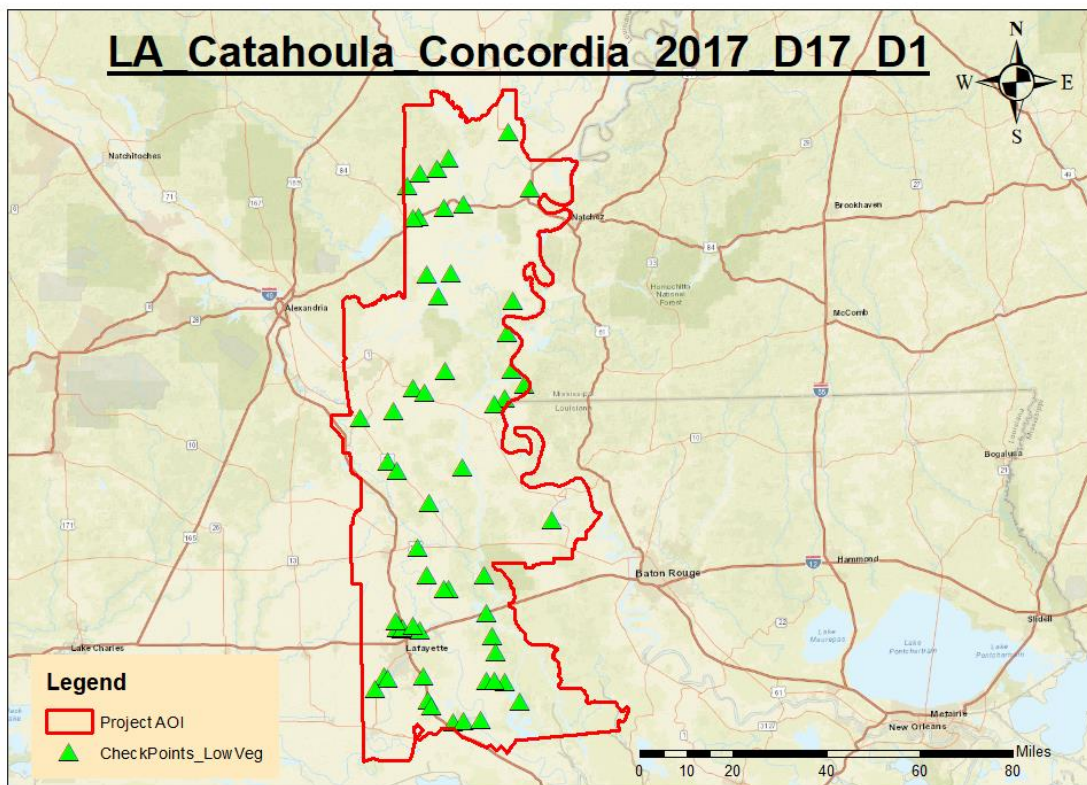


TABLE: Low Vegetation

Point ID	Easting	Northing	Ortho
1_GS00042	630351.669	3523643.326	16.418
1_GS00046	602186.752	3474507.917	15.38
1_GS00047	595471.404	3504876.033	17.726
1_GS00049	637798.94	3503926.008	17.726
1_GS00051	609463.448	3514608.815	30.93
1_GS00052	631660.016	3465199.583	13.612
1_GS00054	599131.332	3494216.271	16.261
1_GS00056	597238.251	3493955.861	16.314
1_GS00057	605534.822	3510655.156	21.832
1_GS00059	614705.957	3498689.658	17.396
1_GS00061	610328.717	3474859.983	16.028
1_GS00062	599491.493	3509318.178	24.44
1_GS00067	607831.64	3497462.762	17.207
2_GS00099	606023.758	3466722.441	15.457
2_GS00100	608235.091	3441169.402	16.582
2_GS00101	588472.96	3409510.755	12.442
2_GS00102	602984.81	3395138.385	8.896
2_GS00103	614516.708	3407813.653	11.699
2_GS00105	590516.226	3427044.307	15.73
2_GS00106	597424.095	3435126.008	17.069
2_GS00107	601210.269	3433352.04	14.197
2_GS00112	578898.972	3424840.962	18.851
2_GS00116	591852.987	3406281.504	11.835
2_GS00146	593168.284	3351827.808	14.246
2_GS00152	587538.579	3335572.733	6.464
2_GS00153	591872.067	3352219.123	13.696
2_GS00156	593787.696	3352118.166	14.715
2_GS00159	609446.649	3365391.947	4.829
2_GS00161	611112.478	3319319.748	4.548
2_GS00162	599785.069	3351302.183	6.141
2_GS00165	591396.874	3354430.344	12.027
2_GS00166	597441.664	3352932.095	6.533
2_GS00167	629141.965	3333415.892	5.399
2_GS00169	634187.882	3326761.56	1.417
2_GS00170	608156.815	3365364.027	4.24
2_GS00171	602279.304	3327145.327	8.59

2_GS00174	622550.092	3333863.231	3.126
2_GS00175	600995.641	3335500.26	8.128
2_GS00176	598856.02	3379850.601	8.369
2_GS00178	601940.933	3370332.676	8.611
2_GS00181	624558.22	3349476.576	6.246
2_GS00183	614781.255	3319908.839	4.546
2_GS00185	588726.064	3334570.093	6.012
2_GS00186	625721.891	3343565.661	3.215
2_GS00190	625650.694	3333640.072	2.247
2_GS00191	603547.454	3324959.386	5.608
2_GS00194	620686.595	3320461.804	5.61
2_GS00195	622832.921	3357348.266	6.825
2_GS00197	584235.031	3330872.156	5.815
2_GS00198	635745.348	3436166.213	21.628
2_GS00199	629946.868	3454213.473	17.226
2_GS00200	631495.179	3441326.766	21.308
2_GS00201	629188.374	3431414.68	16.251
2_GS00202	625624.989	3429506.854	14.139
2_GS00205	645142.133	3389542.773	10.844
2_GS00188	622051.34	3370184.734	11.017

1_GS00042



Point ID: 1_GS00042

Northing: 3523643.326 Meters

Easting: 630351.669 Meters

Orthometric Height: 16.418 Meters

Latitude: 31° 50' 27.74724" N

Longitude: 91° 37' 20.62542" W

Ellipsoid Height: -9.68 Meters

1_GS00046



Point ID: 1_GS00046

Northing: 3474507.917 Meters

Easting: 602186.752 Meters

Orthometric Height: 15.38 Meters

Latitude: 31° 24' 02.43964" N

Longitude: 91° 55' 30.39448" W

Ellipsoid Height: -10.961 Meters

1_GS00047



Point ID: 1_GS00047

Northing: 3504876.033 Meters

Easting: 595471.404 Meters

Orthometric Height: 17.726 Meters

Latitude: 31° 40' 30.73244" N

Longitude: 91° 59' 34.08295" W

Ellipsoid Height: -8.091 Meters

1_GS00049



Point ID: 1_GS00049

Northing: 3503926.008 Meters

Easting: 637798.94 Meters

Orthometric Height: 17.726 Meters

Latitude: 31° 39' 44.38437" N

Longitude: 91° 32' 47.37558" W

Ellipsoid Height: -8.43 Meters

1_GS00051



Point ID: 1_GS00051

Northing: 3514608.815 Meters

Easting: 609463.448 Meters

Orthometric Height: 30.93 Meters

Latitude: 31° 45' 42.28638" N

Longitude: 91° 50' 38.84374" W

Ellipsoid Height: 5.058 Meters

1_GS0052



Point ID: 1_GS0052

Northing: 3465199.583 Meters

Easting: 631660.016 Meters

Orthometric Height: 13.612 Meters

Latitude: 31° 18' 49.47116" N

Longitude: 91° 36' 58.97656" W

Ellipsoid Height: -9.847 Meters

1_GS00054



Point ID: 1_GS0054

Northing: 3494216.271 Meters

Easting: 599131.332 Meters

Orthometric Height: 16.261 Meters

Latitude: 31° 34' 43.43827" N

Longitude: 91° 57' 18.97245" W

Ellipsoid Height: -9.713 Meters

1_GS00056



Point ID: 1_GS00056

Northing: 3493955.861 Meters

Easting: 597238.251 Meters

Orthometric Height: 16.314 Meters

Latitude: 31° 34' 35.56283" N

Longitude: 91° 58' 30.87831" W

Ellipsoid Height: -9.651 Meters

1_GS00057



Point ID: 1_GS00057

Northing: 3510655.156 Meters

Easting: 605534.822Meters

Orthometric Height: 21.832 Meters

Latitude: 31° 43' 35.22718" N

Longitude: 91° 53' 09.69978" W

Ellipsoid Height: -4.021 Meters

1_GS00059



Point ID: 1_GS00059
Northing: 3498689.658 Meters
Easting: 614705.957 Meters
Orthometric Height: 17.396 Meters
Latitude: 31° 37' 15.45833" N
Longitude: 91° 33' 52.60433" W
Ellipsoid Height: -8.63 Meters

1_GS00061



Point ID: 1_GS00061

Northing: 3474859.983 Meters

Easting: 610328.717 Meters

Orthometric Height: 16.028 Meters

Latitude: 31° 24' 11.18519" N

Longitude: 91° 50' 21.98585" W

Ellipsoid Height: -10.351 Meters

1_GS00062



Point ID: 1_GS00062

Northing: 3509318.178 Meters

Easting: 599491.493 Meters

Orthometric Height: 24.44 Meters

Latitude: 31° 42' 53.75880" N

Longitude: 91° 56' 59.80060" W

Ellipsoid Height: -1.371 Meters

1_GS00067



Point ID: 1_GS00067

Northing: 3497462.762 Meters

Easting: 607831.64 Meters

Orthometric Height: 17.207 Meters

Latitude: 31° 36' 26.04891" N

Longitude: 91° 51' 47.65701" W

Ellipsoid Height: -8.784 Meters

2_GS00099



Point ID: 2_GS00030

Northing: 3466722.441 Meters

Easting: 606023.758 Meters

Orthometric Height: 15.457 Meters

Latitude: 31° 19' 48.36069" N

Longitude: 91° 53' 08.10234" W

Ellipsoid Height: -11.062 Meters

2_GS00100



Point ID: 2_GS00100

Northing: 3441169.402 Meters

Easting: 608235.091 Meters

Orthometric Height: 16.582 Meters

Latitude: 31° 05' 57.76320" N

Longitude: 91° 51' 54.36552" W

Ellipsoid Height: -10.339 Meters

2_GS00101



Point ID: 2_GS00101

Northing: 3409510.755 Meters

Easting: 588472.96 Meters

Orthometric Height: 12.442 Meters

Latitude: 30° 48' 55.47234" N

Longitude: 92° 04' 30.17421" W

Ellipsoid Height: -14.729 Meters

2_GS00102



Point ID: 2_GS00102
Northing: 3395138.385 Meters
Easting: 602984.81 Meters
Orthometric Height: 8.896 Meters
Latitude: 30° 41' 04.45249" N
Longitude: 91° 55' 29.26221" W
Ellipsoid Height: -18.407 Meters

2_GS00103



Point ID: 2_GS00103

Northing: 3407813.653 Meters

Easting: 614516.708 Meters

Orthometric Height: 11.699 Meters

Latitude: 30° 47' 52.32938" N

Longitude: 91° 48' 10.81818" W

Ellipsoid Height: -15.496 Meters

2_GS00105



Point ID: 2_GS00105

Northing: 3427044.307 Meters

Easting: 590516.226 Meters

Orthometric Height: 15.73 Meters

Latitude: 31° 58' 24.40143" N

Longitude: 92° 03' 07.67596" W

Ellipsoid Height: -11.29 Meters

2_GS00106



Point ID: 2_GS00006

Northing: 3435126.008 Meters

Easting: 597424.095 Meters

Orthometric Height: 17.069 Meters

Latitude: 31° 02' 44.89884" N

Longitude: 91° 58' 44.349672" W

Ellipsoid Height: -9.881 Meters

2_GS00107



Point ID: 2_GS00107

Northing: 3433352.04 Meters

Easting: 601210.269 Meters

Orthometric Height: 14.197 Meters

Latitude: 31°01' 46.13207" N

Longitude: 91° 56' 22.31530" W

Ellipsoid Height: -12.769 Meters

2_GS00112



Point ID: 2_GS00112
Northing: 3424840.962 Meters
Easting: 578898.972 Meters
Orthometric Height: 18.851 Meters
Latitude: 30° 57' 15.84258" N
Longitude: 92° 10' 26.20358" W
Ellipsoid Height: -8.187 Meters

2_GS0116



Point ID: 2_GS00116
Northing: 3406281.504 Meters
Easting: 591852.987 Meters
Orthometric Height: 11.835 Meters
Latitude: 30° 47' 09.66085" N
Longitude: 92° 02' 24.01881" W
Ellipsoid Height: -15.365 Meters

2_GS00146



Point ID: 2_GS00146
Northing: 3351827.808 Meters
Easting: 593168.284 Meters
Orthometric Height: 14.246 Meters
Latitude: 30° 17' 40.56877" N
Longitude: 92° 01' 52.14064" W
Ellipsoid Height: -13.067 Meters

2_GS00152



Point ID: 2_GS00152

Northing: 3335572.733 Meters

Easting: 587538.579 Meters

Orthometric Height: 6.464 Meters

Latitude: 30° 08' 54.06167" N

Longitude: 92° 05' 27.73116" W

Ellipsoid Height: -20.622 Meters

2_GS00153



Point ID: 2_GS00153

Northing: 3352219.123 Meters

Easting: 591872.067 Meters

Orthometric Height: 13.696 Meters

Latitude: 30° 17' 53.63637" N

Longitude: 92° 02' 40.53705" W

Ellipsoid Height: -13.624 Meters

2_GS00156



Point ID: 2_GS00156
Northing: 3352118.166 Meters
Easting: 593787.696 Meters
Orthometric Height: 14.715 Meters
Latitude: 30° 17' 49.82807" N
Longitude: 92° 01' 28.86174" W
Ellipsoid Height: -12.599 Meters

2_GS00159



Point ID: 2_GS00159
Northing: 3365391.947 Meters
Easting: 609446.649 Meters
Orthometric Height: 4.829 Meters
Latitude: 30° 24' 56.23282" N
Longitude: 91° 51' 37.73187" W
Ellipsoid Height: -22.547 Meters

2_GS00161



Point ID: 2_GS00161
Northing: 3319319.748 Meters
Easting: 611112.478 Meters
Orthometric Height: 4.548 Meters
Latitude: 29° 59' 59.21492" N
Longitude: 91° 50' 52.77275" W
Ellipsoid Height: -22.112 Meters

2_GS00162



Point ID: 2_GS00162

Northing: 3351302.183 Meters

Easting: 599785.069 Meters

Orthometric Height: 6.141 Meters

Latitude: 30° 17' 21.59693" N

Longitude: 91° 57' 44.64655" W

Ellipsoid Height: -21.15 Meters

2_GS00165



Point ID: 2_GS00165
Northing: 3354430.344 Meters
Easting: 591396.874 Meters
Orthometric Height: 12.027 Meters
Latitude: 30° 19' 05.59209" N
Longitude: 92° 02' 57.63191" W
Ellipsoid Height: -15.315 Meters

2_GS00166



Point ID: 2_GS00166

Northing: 3352932.095 Meters

Easting: 597441.664 Meters

Orthometric Height: 6.533 Meters

Latitude: 30° 18' 15.22693" N

Longitude: 91° 59' 11.81350" W

Ellipsoid Height: -20.78 Meters

2_GS00167



Point ID: 2_GS00167
Northing: 3333415.892 Meters
Easting: 629141.965 Meters
Orthometric Height: 5.399 Meters
Latitude: 30° 07' 30.68332" N
Longitude: 91° 39' 33.80624" W
Ellipsoid Height: -21.584 Meters

2_GS00169



Point ID: 2_GS00169

Northing: 3326761.56 Meters

Easting: 634187.882Meters

Orthometric Height: 1.417 Meters

Latitude: 30° 03' 52.59810" N

Longitude: 91° 36' 28.30951" W

Ellipsoid Height: -25.401 Meters

2_GS00170



Point ID: 2_GS00170

Northing: 3365364.027 Meters

Easting: 608156.815 Meters

Orthometric Height: 4.24 Meters

Latitude: 30° 24' 55.74537" N

Longitude: 91° 52' 26.07981" W

Ellipsoid Height: -23.136Meters

2_GS00171



Point ID: 2_GS00171
Northing: 3327145.327 Meters
Easting: 602279.304 Meters
Orthometric Height: 8.59 Meters
Latitude: 30° 04' 16.18211" N
Longitude: 91° 56' 19.71029" W
Ellipsoid Height: -18.288 Meters

2_GS00174



Point ID: 2_GS00174
Northing: 3333863.231 Meters
Easting: 622550.092 Meters
Orthometric Height: 3.126 Meters
Latitude: 30° 07' 47.66340" N
Longitude: 91° 43' 39.91410" W
Ellipsoid Height: -23.879 Meters

2_GS00175



Point ID: 2_GS00175
Northing: 3335500.26 Meters
Easting: 600995.641 Meters
Orthometric Height: 3.126 Meters
Latitude: 30° 08' 47.95667" N
Longitude: 91° 57' 04.78514" W
Ellipsoid Height: -18.93 Meters

2_GS00176



Point ID: 2_GS00176
Northing: 3379850.601 Meters
Easting: 598856.02Meters
Orthometric Height: 8.369 Meters
Latitude: 30° 32' 49.15999" N
Longitude: 91° 58' 09.68707" W
Ellipsoid Height: -19.009 Meters

2_GS00178



Point ID: 2_GS00178

Northing: 3370332.676 Meters

Easting: 601940.933 Meters

Orthometric Height: 8.611 Meters

Latitude: 30° 27' 39.08262" N

Longitude: 91° 56' 17.27959" W

Ellipsoid Height: -18.785 Meters

2_GS00181



Point ID: 2_GS00181

Northing: 3349476.576 Meters

Easting: 624558.22 Meters

Orthometric Height: 6.246 Meters

Latitude: 30° 16' 14.04075" N

Longitude: 91° 42' 18.24629" W

Ellipsoid Height: -20.994 Meters

2_GS00183



Point ID: 2_GS00183

Northing: 3319908.839 Meters

Easting: 614781.255 Meters

Orthometric Height: 4.546 Meters

Latitude: 30° 00' 17.13158" N

Longitude: 91° 48' 35.63314" W

Ellipsoid Height: -22.123 Meters

2_GS00185



Point ID: 2_GS00185
Northing: 3334570.093 Meters
Easting: 625721.891 Meters
Orthometric Height: 6.012 Meters
Latitude: 30° 08' 21.18280" N
Longitude: 92° 04' 43.64930" W
Ellipsoid Height: -21.05 Meters

2_GS00186



Point ID: 2_GS00186
Northing: 3343565.661 Meters
Easting: 625721.891 Meters
Orthometric Height: 3.215 Meters
Latitude: 30° 13' 01.62798" N
Longitude: 91° 41' 37.24420" W
Ellipsoid Height: -23.949 Meters

2_GS00190



Point ID: 2_GS00190
Northing: 3333640.072 Meters
Easting: 625650.694 Meters
Orthometric Height: 2.247 Meters
Latitude: 30° 07' 39.27844" N
Longitude: 91° 41' 44.15491" W
Ellipsoid Height: -24.748 Meters

2_GS00191



Point ID: 2_GS00191

Northing: 3324959.386 Meters

Easting: 603547.454 Meters

Orthometric Height: 5.608 Meters

Latitude: 30° 03' 04.79244" N

Longitude: 91° 55' 33.11658" W

Ellipsoid Height: -21.214 Meters

2_GS00194



Point ID: 2_GS00194

Northing: 3320461.804 Meters

Easting: 620686.595 Meters

Orthometric Height: 5.61 Meters

Latitude: 30° 00' 33.04840" N

Longitude: 91° 44' 55.02569" W

Ellipsoid Height: -21.069 Meters

2_GS00195



Point ID: 2_GS00195
Northing: 3357348.266 Meters
Easting: 622832.921 Meters
Orthometric Height: 6.825 Meters
Latitude: 30° 20' 30.33926" N
Longitude: 91° 43' 19.48861" W
Ellipsoid Height: -20.489 Meters

2_GS00197



Point ID: 2_GS00197

Northing: 3330872.156 Meters

Easting: 584235.031 Meters

Orthometric Height: 5.815 Meters

Latitude: 30° 06' 22.20630" N

Longitude: 92° 07' 32.55416" W

Ellipsoid Height: -21.187 Meters

2_GS00198



Point ID: 2_GS00198

Northing: 3436166.213 Meters

Easting: 635745.348 Meters

Orthometric Height: 21.628 Meters

Latitude: 31° 03' 04.99060" N

Longitude: 91° 34' 38.57834" W

Ellipsoid Height: -5.403 Meters

2_GS00199



Point ID: 2_GS00199

Northing: 3454213.473 Meters

Easting: 629946.868 Meters

Orthometric Height: 17.226 Meters

Latitude: 31° 12' 53.41270" N

Longitude: 91° 38' 08.90911" W

Ellipsoid Height: -9.621 Meters

2_GS00200



Point ID: 2_GS00200

Northing: 3441326.766 Meters

Easting: 631495.179 Meters

Orthometric Height: 21.308 Meters

Latitude: 31° 05' 54.31365" N

Longitude: 91° 37' 16.47125" W

Ellipsoid Height: -5.691 Meters

2_GS00201



Point ID: 2_GS00201

Northing: 3431414.68 Meters

Easting: 629188.374 Meters

Orthometric Height: 16.251 Meters

Latitude: 31° 00' 33.34934" N

Longitude: 91° 38' 48.08356" W

Ellipsoid Height: -10.802 Meters

2_GS00202



Point ID: 2_GS00202

Northing: 3429506.854 Meters

Easting: 625624.989 Meters

Orthometric Height: 14.139 Meters

Latitude: 31° 59' 32.78162" N

Longitude: 91° 41' 03.28551" W

Ellipsoid Height: -12.916 Meters

2_GS00205



Point ID: 2_GS00205

Northing: 3389542.773 Meters

Easting: 645142.133 Meters

Orthometric Height: 10.844 Meters

Latitude: 30° 37' 46.94471" N

Longitude: 91° 29' 07.99038" W

Ellipsoid Height: -16.45 Meters

2_GS00188



Point ID: 2_GS00188

Northing: 3370184.734 Meters

Easting: 622051.34 Meters

Orthometric Height: 11.017 Meters

Latitude: 30° 27' 27.53494" N

Longitude: 91° 43' 43.35762" W

Ellipsoid Height: -16.36 Meters

Vegetated Vertical Accuracy Checkpoints Medium Vegetation

The Map shows the overall distribution of the Vegetated Vertical Accuracy Checkpoint, Medium Vegetation throughout the AOI. The following tables contain a list of the control using Easting, Northing, and Orthometric height. The coordinate system displayed is Universal Transverse Mercator UTM Zone 15, North American Datum 1983 (2011), North American Vertical Datum of 1988, Geoid 12B and using Meters for measurement.

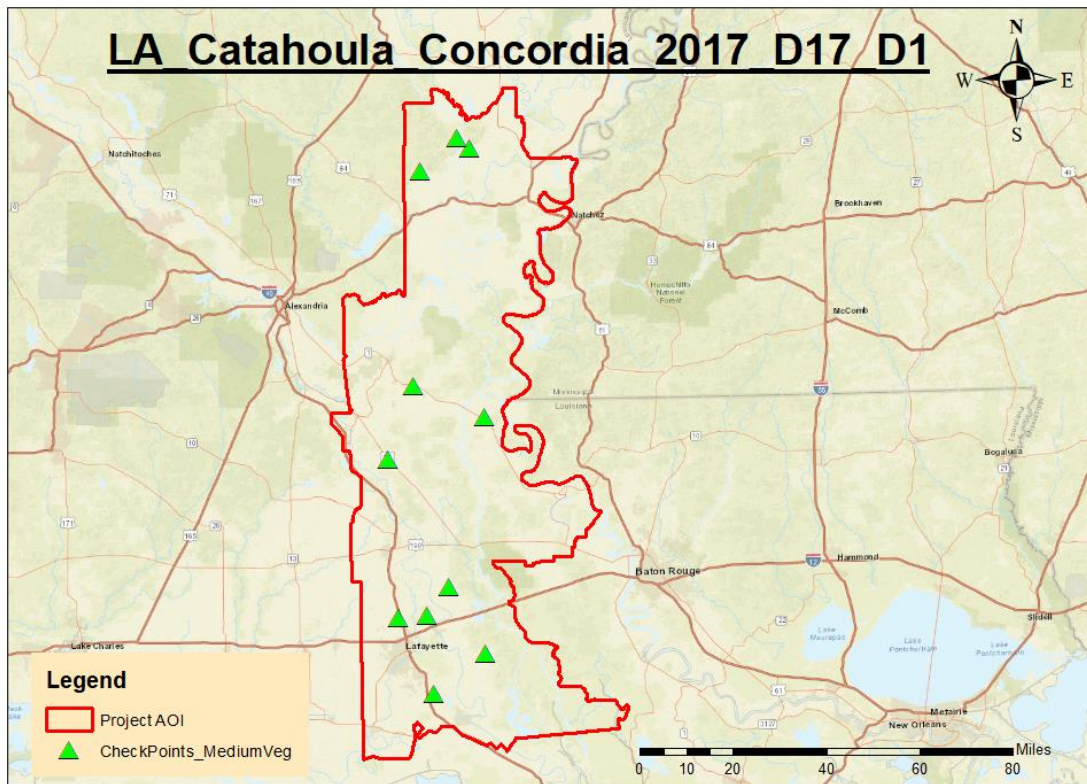


TABLE: Medium Vegetation

Point ID	Easting	Northing	Ortho
1_GS00043	616580.136	3517120.444	17.457
1_GS00044	612441.09	3520852.796	17.083
1_GS00066	599527.808	3509328.39	25.938
2_GS00104	597466.045	3435112.394	16.64
2_GS00109	588483.395	3409568.634	12.62
2_GS00111	621990.098	3424272.906	14.092
2_GS00151	592241.677	3354861.243	11.193
2_GS00154	609436.61	3365377.899	4.74
2_GS00160	604486.358	3328532.446	7.71
2_GS00168	622371.091	3342416.271	4.302
2_GS00189	601983.537	3355629.989	4.925

1_GS00043



Point ID: 1_GS00043

Northing: 3517120.444 Meters

Easting: 616580.136 Meters

Orthometric Height: 17.457 Meters

Latitude: 31° 47' 01.31022" N

Longitude: 91° 46' 07.28051" W

Ellipsoid Height: -8.488 Meters

1_GS00044



Point ID: 1_GS00044

Northing: 3520852.796 Meters

Easting: 612441.09Meters

Orthometric Height: 17.083 Meters

Latitude: 31° 49' 04.00379" N

Longitude: 91° 48' 43.07915" W

Ellipsoid Height: -8.816 Meters

1_GS00066



Point ID: 1_GS00066

Northing: 3509328.39 Meters

Easting: 599527.808 Meters

Orthometric Height: 25.938 Meters

Latitude: 31° 42' 54.07909" N

Longitude: 91° 56' 58.41724" W

Ellipsoid Height: 0.127 Meters

2_GS00104



Point ID: 2_GS00104

Northing: 3435112.394 Meters

Easting: 597466.045 Meters

Orthometric Height: 16.64 Meters

Latitude: 31° 02' 44.44417" N

Longitude: 91° 58' 42.91898" W

Ellipsoid Height: -10.31 Meters

2_GS00109



Point ID: 2_GS00109
Northing: 3409568.634 Meters
Easting: 588483.395 Meters
Orthometric Height: 12.62 Meters
Latitude: 31° 48' 57.34947" N
Longitude: 92° 04' 29.76350" W
Ellipsoid Height: -14.551 Meters

2_GS00111



Point ID: 2_GS00111

Northing: 3424272.906 Meters

Easting: 621990.098 Meters

Orthometric Height: 14.092 Meters

Latitude: 30° 56' 44.18161" N

Longitude: 91° 43' 22.57387" W

Ellipsoid Height: -12.978 Meters

2_GS00151



Point ID: 2_GS00151

Northing: 3354861.243 Meters

Easting: 592241.677 Meters

Orthometric Height: 11.193 Meters

Latitude: 30° 19' 19.35782" N

Longitude: 92° 02' 25.86547" W

Ellipsoid Height: -16.15 Meters

2_GS00154



Point ID: 2_GS00154

Northing: 3365377.899 Meters

Easting: 609436.61 Meters

Orthometric Height: 4.74 Meters

Latitude: 30° 24' 55.77982" N

Longitude: 91° 51' 38.11336" W

Ellipsoid Height: -22.636 Meters

2_GS00160



Point ID: 2_GS00160
Northing: 3328532.466 Meters
Easting: 604486.358 Meters
Orthometric Height: 7.71 Meters
Latitude: 31° 05' 00.56645" N
Longitude: 91° 54' 56.79430" W
Ellipsoid Height: -19.194 Meters

2_GS00168



Point ID: 2_GS00168

Northing: 3342416.271 Meters

Easting: 622371.091 Meters

Orthometric Height: 4.302 Meters

Latitude: 30° 12' 25.52872" N

Longitude: 91° 43' 43.03816" W

Ellipsoid Height: -22.851 Meters

2_GS00189



Point ID: 2_GS00189

Northing: 3355629.989 Meters

Easting: 601983.537 Meters

Orthometric Height: 4.925 Meters

Latitude: 30° 19' 41.51095" N

Longitude: 91° 56' 20.84705" W

Ellipsoid Height: -22.4 Meters

TABLE: High Vegetation

Point ID	Easting	Northing	Ortho
1_GS00055	609457.283	3514631.928	30.71
1_GS00058	611953.852	3491993.991	17.282
1_GS00060	599505.497	3509314.153	26.194
1_GS00063	605537.709	3510638.599	21.644
1_GS00064	607805.834	3497318.133	17.138
1_GS00065	608489.192	3470783.796	18.285
2_GS00155	605258.324	3365203.167	5.645
2_GS00157	591420.563	3354429.313	11.675
2_GS00158	622697.686	3320853.751	5.182
2_GS00163	602646.735	3363075.376	8.34
2_GS00164	634221.067	3326783.716	4.532
2_GS00172	602016.233	3370284.076	8.396
2_GS00173	602948.701	3361706.243	8.111
2_GS00177	608156.968	3365350.138	4.211
2_GS00179	612943.217	3332890.544	4.132
2_GS00180	611107.178	3319260.214	4.216
2_GS00182	624515.865	3349444.679	6.198
2_GS00184	601026.693	3335474.909	7.034
2_GS00192	621456.575	3329599.435	4.347
2_GS00196	614852.208	3319865.096	4.165
2_GS00203	624851.438	3420099.133	14.143
1_GS00050	634046.707	3472600.958	14.954
1_GS00053	637666.765	3510772.162	18.24

1_GS00055



Point ID: 1_GS0055

Northing: 3514631.928 Meters

Easting: 609457.283 Meters

Orthometric Height: 30.71 Meters

Latitude: 31° 45' 43.03906" N

Longitude: 91° 50' 39.06875" W

Ellipsoid Height: -4.29 Meters

1_GS00058



Point ID: 1_GS00058

Northing: 3491993.991 Meters

Easting: 611953.852 Meters

Orthometric Height: 17.282 Meters

Latitude: 31° 33' 27.03868" N

Longitude: 91° 49' 1347947" W

Ellipsoid Height: -8.809 Meters

1_GS00060



Point ID: 1_GS00060

Northing: 3509314.153 Meters

Easting: 599505.497 Meters

Orthometric Height: 26.194 Meters

Latitude: 31° 42' 53.62371" N

Longitude: 91° 56' 29.27008" W

Ellipsoid Height: 0.383 Meters

1_GS00063



Point ID: 1_GS00063

Northing: 3510638.599 Meters

Easting: 605537.709 Meters

Orthometric Height: 21.64 Meters

Latitude: 31° 43' 34.68854" N

Longitude: 91° 33' 09.59653" W

Ellipsoid Height: -4.209 Meters

1_GS00064



Point ID: 1_GS00064

Northing: 3497318.133 Meters

Easting: 607805.834 Meters

Orthometric Height: 17.138 Meters

Latitude: 31° 36' 21.36093" N

Longitude: 91° 51' 48.69327" W

Ellipsoid Height: -8.855 Meters

1_GS00065



Point ID: 1_GS00065
Northing: 3470783.796 Meters
Easting: 608489.192 Meters
Orthometric Height: 608489.192 Meters
Latitude: 31° 21' 59.43550" N
Longitude: 91° 51' 33.23504" W
Ellipsoid Height: -8.168 Meters

2_GS00155



Point ID: 2_GS00155

Northing: 3365203.167 Meters

Easting: 605258.324 Meters

Orthometric Height: 5.645 Meters

Latitude: 30° 24' 51.44486" N

Longitude: 91° 14' 14.76216" W

Ellipsoid Height: -21.731 Meters

2_GS00157



Point ID: 2_GS00157
Northing: 3354429.313 Meters
Easting: 591420.563 Meters
Orthometric Height: 11.675 Meters
Latitude: 31° 19' 05.55214" N
Longitude: 91° 02' 56.74529" W
Ellipsoid Height: -15.667 Meters

2_GS00158



Point ID: 2_GS00158

Northing: 3320853.751 Meters

Easting: 622697.686 Meters

Orthometric Height: 5.182 Meters

Latitude: 31° 00' 45.05944" N

Longitude: 91° 43' 39.80879" W

Ellipsoid Height: -21.506 Meters

2_GS00163



Point ID: 2_GS00163

Northing: 3363075.376 Meters

Easting: 602646.735 Meters

Orthometric Height: 8.34 Meters

Latitude: 30° 23' 43.14354" N

Longitude: 91° 55' 53.38659" W

Ellipsoid Height: -19.029 Meters

2_GS00164



Point ID: 2_GS00164

Northing: 3326783.716 Meters

Easting: 634221.067 Meters

Orthometric Height: 4.532 Meters

Latitude: 30° 03' 53.30460" N

Longitude: 91° 36' 27.06033" W

Ellipsoid Height: -22.87 Meters

2_GS00172



Point ID: 2_GS00172

Northing: 3370284.076 Meters

Easting: 602016.233 Meters

Orthometric Height: 8.396 Meters

Latitude: 30° 27' 37.48107" N

Longitude: 91° 56' 14.47344" W

Ellipsoid Height: -19.0 Meters

2_GS00173



Point ID: 2_GS00173

Northing: 3361706.243 Meters

Easting: 602948.701 Meters

Orthometric Height: 8.111 Meters

Latitude: 30° 22' 58.58007" N

Longitude: 91° 55' 42.55768" W

Ellipsoid Height: -19.251 Meters

2_GS00177



Point ID: 2_GS00177
Northing: 3365350.138 Meters
Easting: 608156.968 Meters
Orthometric Height: 4.211 Meters
Latitude: 30° 24' 55.29419" N
Longitude: 91° 52' 26.07924" W
Ellipsoid Height: -23.165 Meters

2_G00179



Point ID: 2_GS00179
Northing: 3332890.544 Meters
Easting: 612943.217 Meters
Orthometric Height: 4.132 Meters
Latitude: 30° 07' 19.41166" N
Longitude: 91° 49' 39.26127" W
Ellipsoid Height: -22.864 Meters

1_GS00033



Point ID: 1_GS00033

Northing: 3497279.117 Meters

Easting: 607809.779 Meters

Orthometric Height: 17.238 Meters

Latitude: 31° 36' 20.09259" N

Longitude: 91° 51' 48.55898" W

Ellipsoid Height: -8.756 Meters

2_GS00180



Point ID: 2_GS00180
Northing: 3319260.214 Meters
Easting: 611107.178 Meters
Orthometric Height: 4.216 Meters
Latitude: 29° 59' 57.28289" N
Longitude: 91° 50' 52.99290" W
Ellipsoid Height: -22.442 Meters

2_GS00182



Point ID: 2_GS00182

Northing: 3349444.679 Meters

Easting: 624515.865 Meters

Orthometric Height: 6.198 Meters

Latitude: 30° 16' 13.02044" N

Longitude: 91° 42' 19.84476" W

Ellipsoid Height: -21.042 Meters

2_GS00184



Point ID: 2_GS00184

Northing: 3335474.909 Meters

Easting: 601026.693 Meters

Orthometric Height: 7.034 Meters

Latitude: 30° 08' 47.12394" N

Longitude: 91° 57' 03.63330" W

Ellipsoid Height: -20.024 Meters

2_GS00192



Point ID: 2_GS00006
Northing: 3329599.435 Meters
Easting: 621456.575 Meters
Orthometric Height: 4.37 Meters
Latitude: 30° 05' 29.56880" N
Longitude: 91° 44' 22.53250" W
Ellipsoid Height: -22.569 Meters

2_GS00196



Point ID: 2_GS00196

Northing: 3319865.096 Meters

Easting: 614852.208 Meters

Orthometric Height: 4.165 Meters

Latitude: 30° 00' 15.68680" N

Longitude: 91° 48' 33.00216" W

Ellipsoid Height: -22.503 Meters

2_GS00203



Point ID: 2_GS00203

Northing: 3420099.133 Meters

Easting: 624851.438 Meters

Orthometric Height: 14.143 Meters

Latitude: 30° 54' 27.55853" N

Longitude: 91° 41' 36.60566" W

Ellipsoid Height: -12.968 Meters

1_GS00050



Point ID: 1_GS00050
Northing: 3472600.958 Meters
Easting: 634046.707 Meters
Orthometric Height: 14.954 Meters
Latitude: 31° 22' 48.82692" N
Longitude: 91° 35' 25.12136" W
Ellipsoid Height: -8.43 Meters

1_GS00053



Point ID: 1_GS0053

Northing: 3510772.162 Meters

Easting: 637666.765 Meters

Orthometric Height: 18.24 Meters

Latitude: 31° 43' 26.73356" N

Longitude: 91° 32' 48.92968" W

Ellipsoid Height: -7.9 Meters