

Classified Point Cloud

Deliverable 1 Summary

✓ General		
Folder:	F:\ME_SouthCoastal_2020_A20_191384\ME_SouthCoastal_1_2020_191382\point_cloud\tilecls	
Total # of Files:	3,274	(All Valid)
Total File Size:	1.3 TB	(1,420,542,397,004 bytes)

✓ Tile Sizes	
Median Tile Size:	1,500m x 1,500m
Minimum Tile Size:	10m x 5m
Maximum Tile Size:	1,500m x 1,500m
X Range:	360913.20m to 478670.60m
Y Range:	4767126.88m to 4927203.51m
Elevation Range:	-156.83m to 2383.05m

✓ LAS Version And Point Record Formats	
v1.4, Point Record Format 6	3,274 of 3,274 Tiles

✓ Spatial Reference System		
Horizontal Projection	NAD83(2011) / UTM zone 19N	3,274 of 3,274 Tiles
Horizontal Datum	NAD83 (National Spatial Reference System 2011)	3,274 of 3,274 Tiles
Horizontal Units	meter	3,274 of 3,274 Tiles
Vertical Datum	NAVD88 height - Geoid18 (m)	3,274 of 3,274 Tiles
Vertical Units	meter	3,274 of 3,274 Tiles
Vertical USGS-Compliant	Yes	3,274 of 3,274 Tiles
Geoid	Geoid18	3,274 of 3,274 Tiles
Storage Method	WKT	3,274 of 3,274 Tiles
Matches OGC Template	Yes	3,274 of 3,274 Tiles

✓ GPS Time Type	
Adjusted	3,274 of 3,274 Tiles

✓ File Source ID Equals 0	
Yes	3,274 of 3,274 Tiles

✓ VLR/EVLR Reserved Equals 0	
Yes	9,822 of 9,822 Records

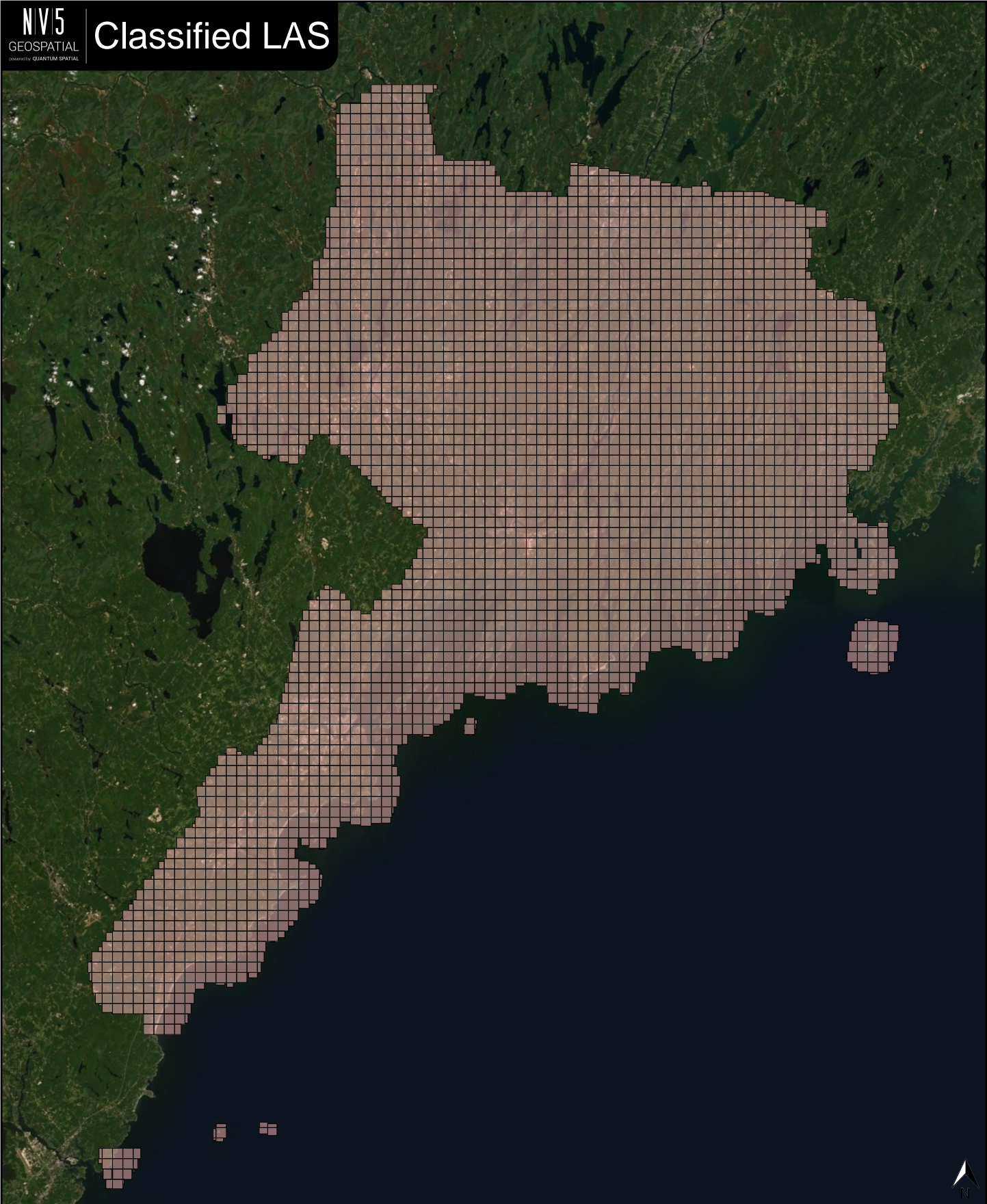
✓ Unnecessary Bytes At End Of File	
No	3,274 of 3,274 Tiles

✓ Legacy Point Count Check	
Zero	3,274 of 3,274 Tiles

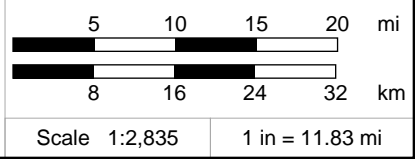
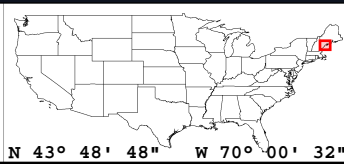
✓ System Identifier	
Merge	3,274 of 3,274 Tiles

✓ Generating Software	
LiDAR Suite	3,274 of 3,274 Tiles

Classified LAS



Classified LAS Tiles (3,274)

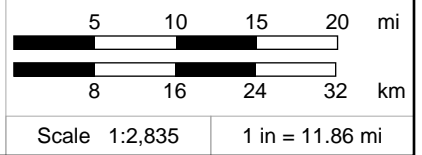
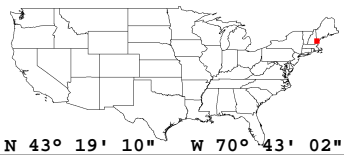
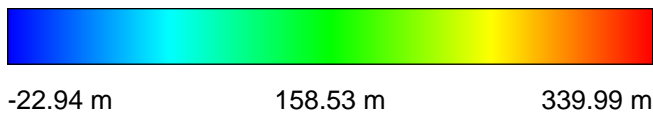
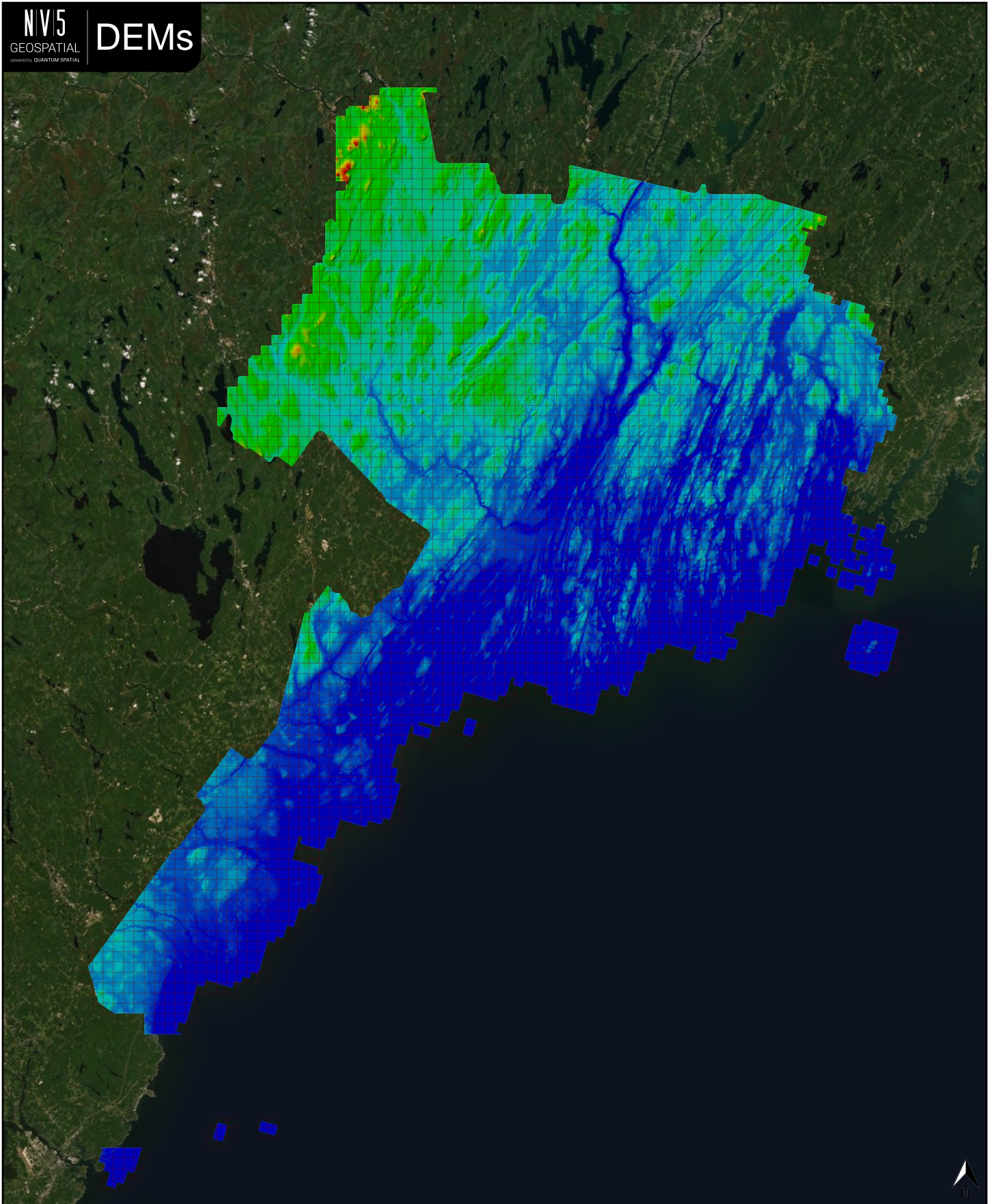


✓ General		
Folder:	F:\ME_SouthCoastal_2020_A20_191384\ME_SouthCoastal_1_2020_191382\bare_earth\be_rasters	
Total # of Files:	3,274	(All Valid)
Total File Size:	28.8 GB	(30,917,809,464 bytes)

✓ Tile Sizes	
Median Tile Size:	1,500m x 1,500m
Minimum Tile Size:	1,500m x 1,500m
Maximum Tile Size:	1,500m x 1,500m
X Range:	360000.00m to 480000.00m
Y Range:	4767000.00m to 4927500.00m

✓ Spatial Reference System		
Horizontal Projection	NAD83(2011) / UTM zone 19N	3,274 of 3,274 Tiles
Horizontal Datum	NAD83 (National Spatial Reference System 2011)	3,274 of 3,274 Tiles
Horizontal Units	meter	3,274 of 3,274 Tiles
Vertical Datum	NAVD88 height - Geoid18 (m)	3,274 of 3,274 Tiles
Vertical Units	meter	3,274 of 3,274 Tiles
Vertical USGS-Compliant	Yes	3,274 of 3,274 Tiles
GDAL 2.x Compatible	Yes	3,274 of 3,274 Tiles
Geoid	Geoid18	3,274 of 3,274 Tiles
Matches OGC Template	Yes	3,274 of 3,274 Tiles

✓ Raster		
File Type:	TIF	3,274 of 3,274
Bands:	1	3,274 of 3,274
Grid Size (pixels):	1500 x 1500	3,274 of 3,274
Pixel Resolution:	1.00000000m x 1.00000000m	3,274 of 3,274
Pixel Type:	32-bit	3,274 of 3,274
Compression:	None	3,274 of 3,274
No Data Value:	-999999	3,274 of 3,274

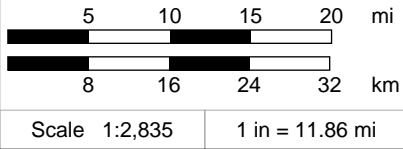
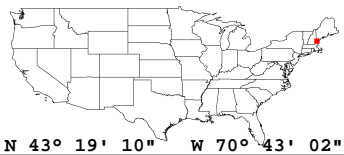
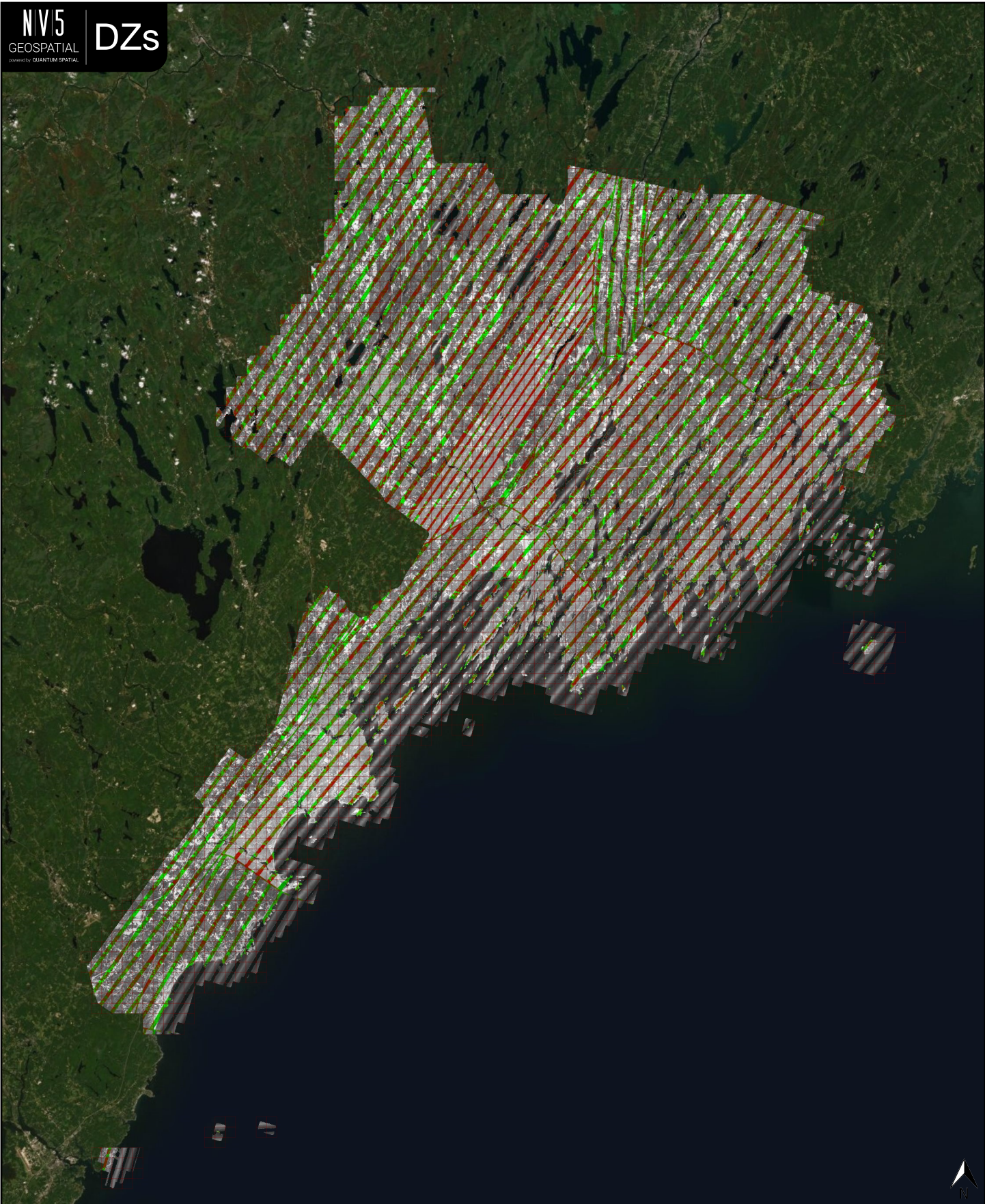


✓ General		
Folder:	F:\ME_SouthCoastal_2020_A20_191384\ME_SouthCoastal_1_2020_191382\metadata\spatial_metadata\height_separation_rasters	
Total # of Files:	3,274	(All Valid)
Total File Size:	9.4 GB	(10,047,357,585 bytes)

✓ Tile Sizes	
Median Tile Size:	1,500m x 1,500m
Minimum Tile Size:	1,500m x 1,500m
Maximum Tile Size:	1,500m x 1,500m
X Range:	360000.00m to 480000.00m
Y Range:	4767000.00m to 4927500.00m

✓ Spatial Reference System		
Horizontal Projection	NAD83(2011) / UTM zone 19N	3,274 of 3,274 Tiles
Horizontal Datum	NAD83 (National Spatial Reference System 2011)	3,274 of 3,274 Tiles
Horizontal Units	meter	3,274 of 3,274 Tiles
Vertical Datum	NAVD88 height - Geoid18 (m)	3,274 of 3,274 Tiles
Vertical Units	meter	3,274 of 3,274 Tiles
Geoid	Geoid18	3,274 of 3,274 Tiles

✓ Raster		
File Type:	TIF	3,274 of 3,274
Bands:	3	3,274 of 3,274
Grid Size (pixels):	1500 x 1500	3,274 of 3,274
Pixel Resolution:	1.00000000m x 1.00000000m	3,274 of 3,274
Pixel Type:	8-bit (RGB)	3,274 of 3,274
Compression:	LZW	3,274 of 3,274
No Data Value:	255	3,274 of 3,274



✓ General		
Folder:	F:\ME_SouthCoastal_2020_A20_191384\ME_SouthCoastal_1_2020_191382\other\intensity_images	
Total # of Files:	3,274	(All Valid)
Total File Size:	7.2 GB	(7,744,581,520 bytes)

✓ Tile Sizes	
Median Tile Size:	1,500m x 1,500m
Minimum Tile Size:	1,500m x 1,500m
Maximum Tile Size:	1,500m x 1,500m
X Range:	360000.00m to 480000.00m
Y Range:	4767000.00m to 4927500.00m

✓ Spatial Reference System		
Horizontal Projection	NAD83(2011) / UTM zone 19N	3,274 of 3,274 Tiles
Horizontal Datum	NAD83 (National Spatial Reference System 2011)	3,274 of 3,274 Tiles
Horizontal Units	meter	3,274 of 3,274 Tiles
Vertical Datum	NAVD88 height - Geoid18 (m)	3,274 of 3,274 Tiles
Vertical Units	meter	3,274 of 3,274 Tiles
Geoid	Geoid18	3,274 of 3,274 Tiles

✓ Raster		
File Type:	TIF	3,274 of 3,274
Bands:	1	3,274 of 3,274
Grid Size (pixels):	1500 x 1500	3,274 of 3,274
Pixel Resolution:	1.00000000m x 1.00000000m	3,274 of 3,274
Pixel Type:	8-bit Unsigned Integer (MINISBLACK)	3,274 of 3,274
Compression:	NONE	3,274 of 3,274
No Data Value:	0	3,274 of 3,274

