

MN\_RiverWest\_B3

Summary USGS National Geospatial Program  
Lidar Base Specification  
2023 rev. A Report

Quality level tested: QL1

Report generated on 11/29/2023

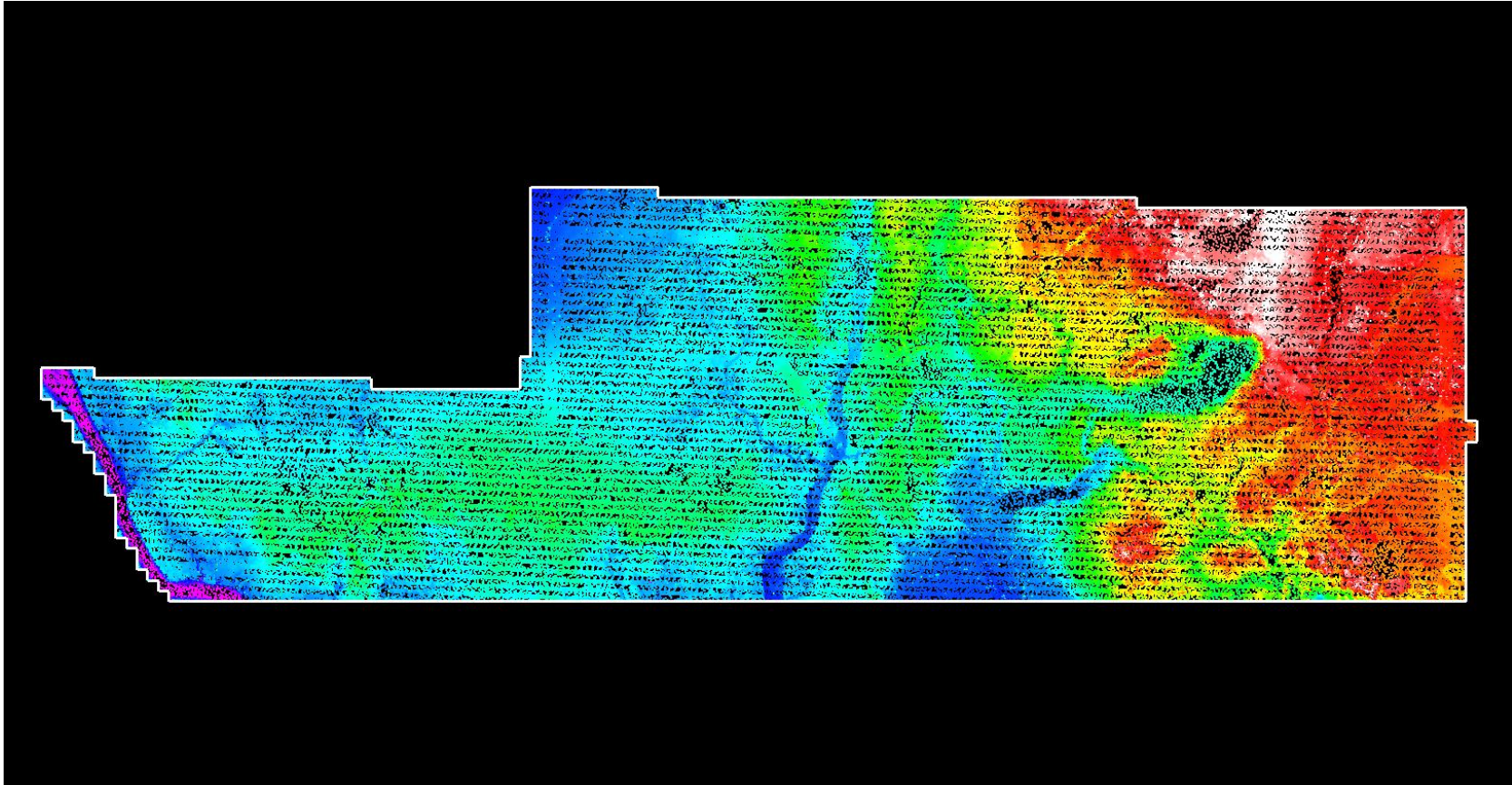
This document reports on compliance with the USGS National Geospatial Program Lidar Base Specification 2023 rev. A. The complete specification, which also contains a revision history, a list of references, and a glossary of related terms, can be found [here](#).

Test Number	No Issue Points Identified	Test Results Need Review	Unable to Grade See Report Content
C-1			X
C-2			X
C-3			X
C-4	X		
C-5			Skipped
C-6.1	X		
C-6.2		X	
C-7			X
DPH-1.1	X		
DPH-1.2	X		
DPH-1.3	X		
DPH-1.4			X
DPH-3	X		
DPH-4	X		
DPH-5	X		
DPH-6	X		
DPH-7	X		
DPH-8			X
DPH-9.1			Skipped
DPH-9.2			Skipped
DPH-10			X
DPH-11	X		
DPH-12			X
DPH-14			X
DPH-15			X
DPH-16			X

## C-1 Report on Collection Area

The USGS Lidar Base Specification 2023 rev. A states: "The Defined Project Area (DPA) shall be the Area of Interest (AOI) plus a 100-meter buffer. Data collection is required for the full extent of the DPA. All products shall be produced to 3DEP and Task Order requirements up the edge of the DPA. All data and products shall be delivered to the customer for the full extent of the DPA. All products, including checkpoints, shall be located within or otherwise clipped to DPA extents."

The purpose of this section is to show lidar coverage to the extent of a 100 meter buffer of the defined project area (DPA) boundary.



White polygon is defined project area (DPA) boundary

## *C-2 Report on Multiple Discrete Returns*

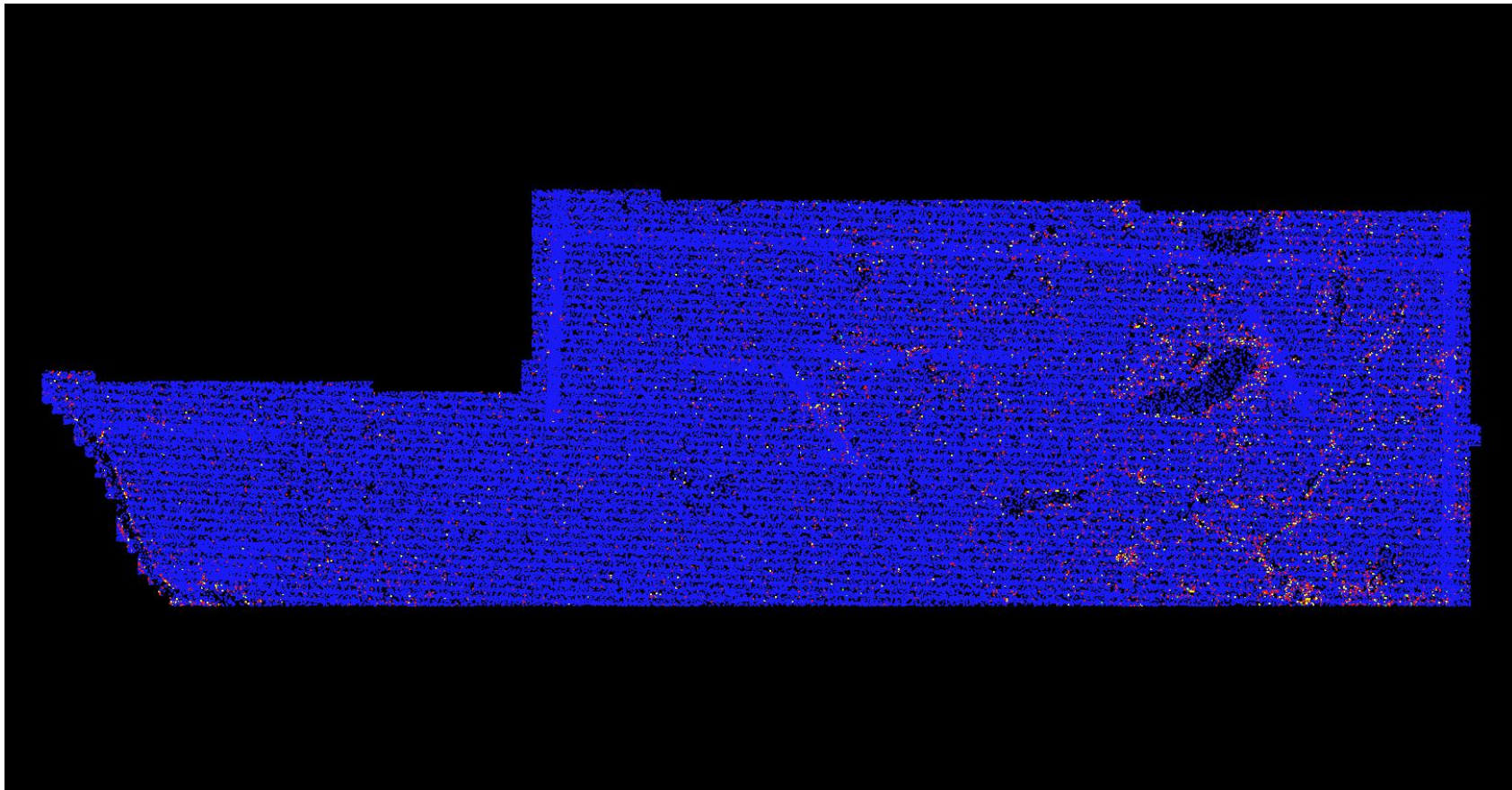
The USGS Lidar Base Specification 2023 rev. A states: "Deriving and delivering multiple discrete returns are required in all conventional lidar data collection efforts. Data collection shall be capable of at least three returns per pulse."

The purpose of this section is to report on the presence and quantities of lidar returns in the LAS data. Empty return columns can indicate a collection or processing problem dealing with lidar return attribute information.

File	First return	Second return	Third return	Other returns	Total points
Total	99,386,826,193	3,844,390,725	925,886,047	134,597,490	104,291,700,455

## *C-2 Report on Multiple Discrete Returns - All Returns*

The purpose of this section is to show a graphic of lidar data points colored by all returns. Blank flight lines can indicate a collection or processing problem dealing with lidar return attribute information.



### *C-3 Report on Intensity Values*

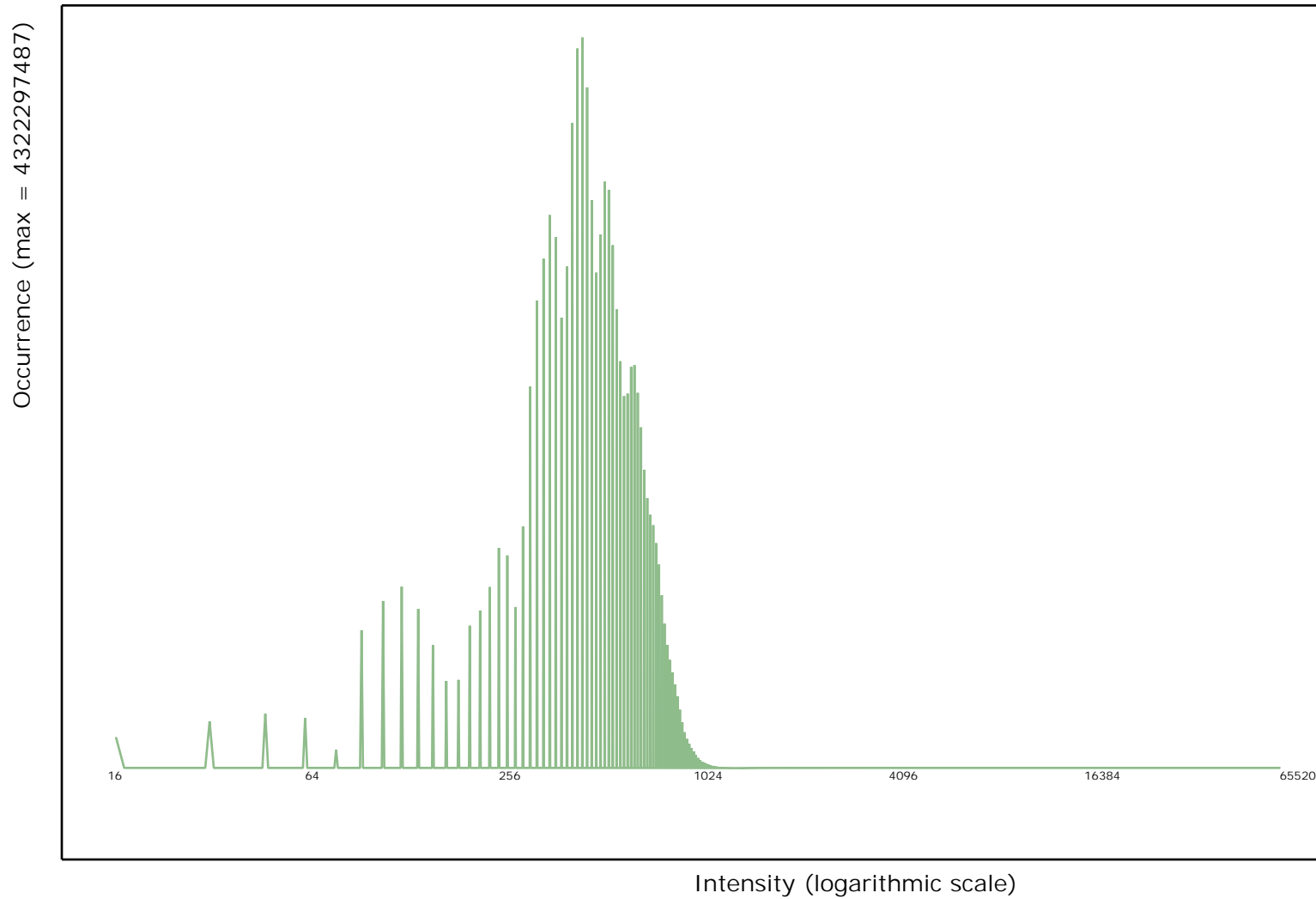
The USGS Lidar Base Specification 2023 rev. A states: "Intensity values are required for each multiple discrete return. The intensity values recorded in the LAS files shall be normalized to 16 bit, as required by the LAS Specification version 1.4-R15 (ASPRS, 2019). Intensity normalization should be strictly linear. Common image stretches (minimum-maximum, standard deviations, percent clip, histogram, and so forth) are expressly forbidden."

The purpose of this section is to report on the presence and quantities of lidar intensity in the LAS data.

File	Minimum	Maximum	Mean	Median	Mode
Overall Statistics	16	65,520	505	496	464

## C-3 Report on Intensity Values - continued

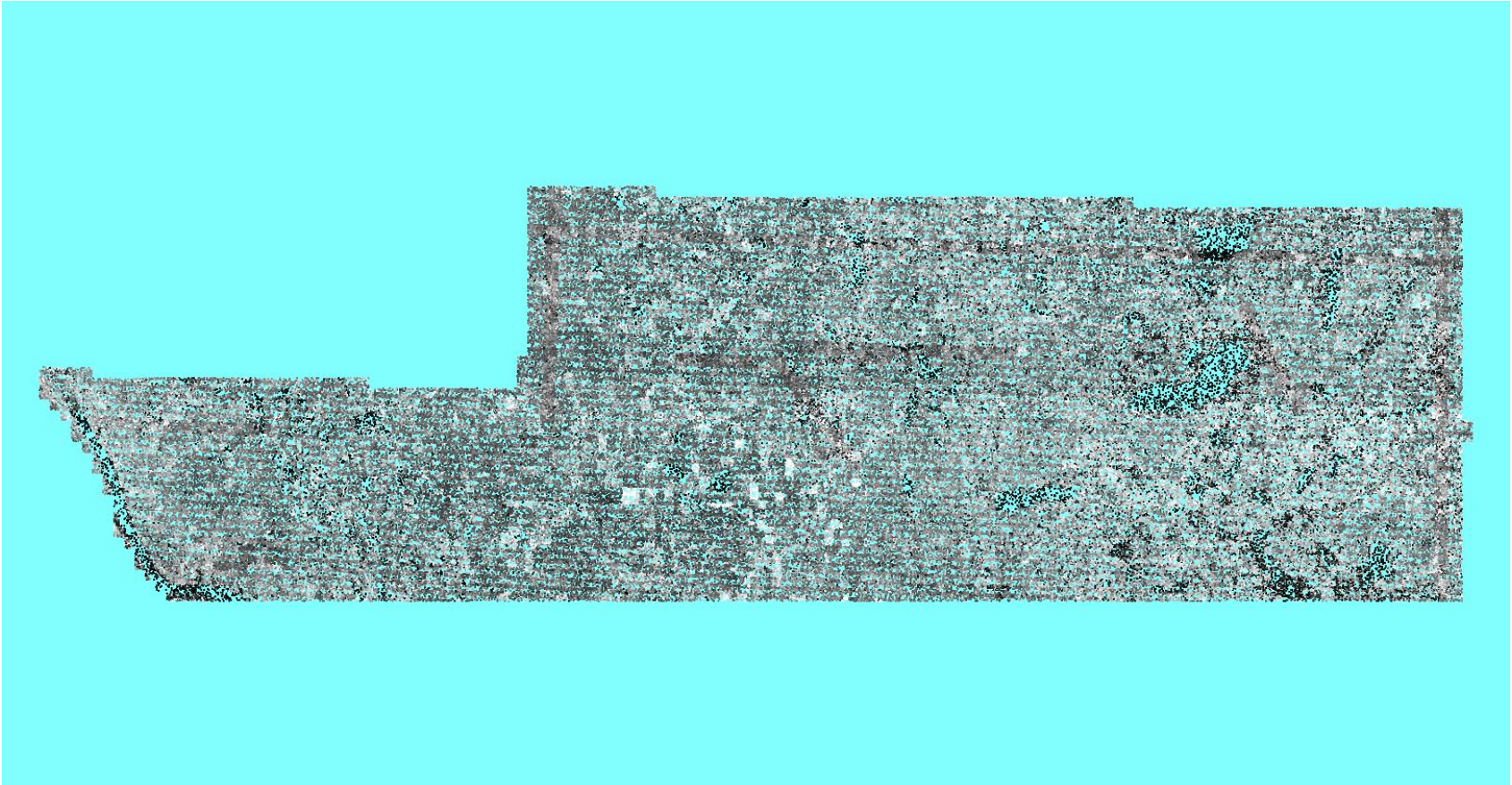
The purpose of this section is to show a frequency distribution chart of intensities throughout all of the lidar files.





## *C-3 Report on Intensity Values - continued*

The purpose of this section is to show a graphic of lidar data points colored by intensity. Blank flight lines can indicate a collection or processing problem dealing with lidar intensity attribute information.





## C-4 Report on Nominal Pulse Spacing (NPS)

The USGS Lidar Base Specification 2023 rev. A states: "Assessment and reporting of the NPS are made against single swath, single instrument, first-return-only data, including only the geometrically usable part of the swath and excluding acceptable data voids. Higher net densities of lidar point measurements are being achieved more often by flying multiple passes of the lidar instrument over the project area or flying with large amounts (greater than [ $>$ ] 50 percent) of overlap between swaths, creating a need for a new term to describe total pulse density without being confused with NPS and NPD. This specification will use the terms aggregate nominal pulse spacing (ANPS) and aggregate nominal pulse density (ANPD) to describe the net overall pulse spacing and density, respectively. The required ANPS and ANPD by QL are listed in Table 1. Dependent on the local terrain and land cover conditions in a project, a greater pulse density may be required on specific projects."

**Table 1. Aggregate nominal pulse spacing and density.**

[QL, quality level; pls/m<sup>2</sup>, pulses per square meter; m, meter;  $\leq$ , less than or equal to;  $\geq$ , greater than or equal to]

Quality level	Aggregate nominal pulse spacing (m)	Aggregate nominal pulse density (pls/m <sup>2</sup> )
QL0	$\leq 0.35$	$\geq 8.0$
QL1	$\leq 0.35$	$\geq 8.0$
QL2	$\leq 0.71$	$\geq 2.0$
QL3	$\leq 1.41$	$\geq 0.5$

The purpose of this section is to report on the lidar point density and nominal point spacing by LAS file. Averages by files (not including overlap), project boundary polygons (including overlap), and aggregate project boundary polygons (including overlap) are reported. Any 'Exclusion Shapefile' pathed out on the Input Tab of this tool was applied to the processing for this test to avoid skewing the results with known areas of no data.

Quality level tested: QL1

Units: Meter

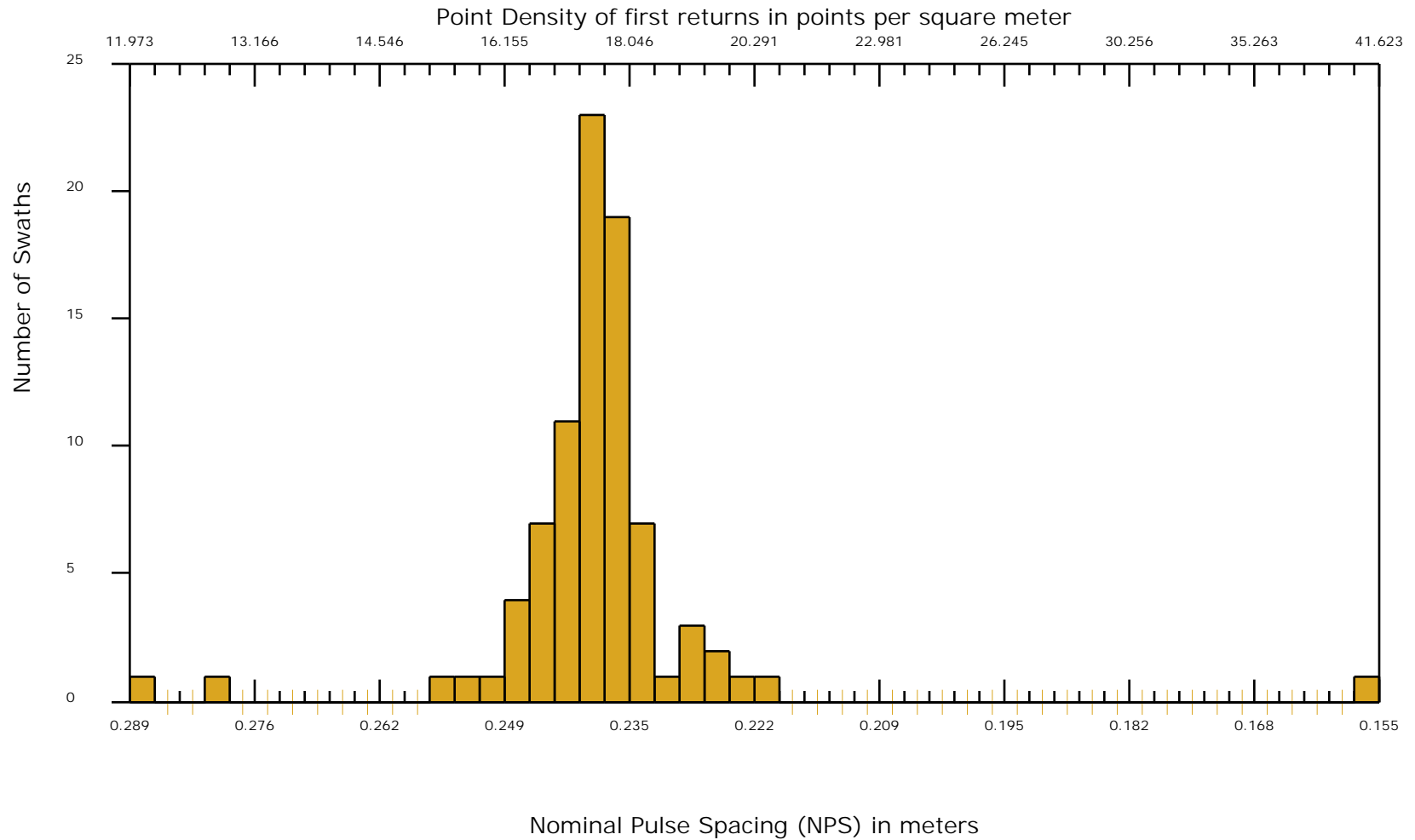
File	Number of First Returns	Area	Point Density	NPS
Average			17.517/1.627 <small>pp Square Meter/ pp Square US Survey Foot</small>	0.239/0.784 <small>Meter/ US Survey Feet</small>

## *C-4 Report on Nominal Pulse Spacing (NPS) - continued*

Boundary ID	Number of First Returns	Area	Point Density	NPS
Aggregate	99,087,556,871	4,164,000,000	23.796/2.211 <small>pp Square Meter/ pp Square US Survey Foot</small>	0.205/0.673 <small>Meter/ US Survey Feet</small>

## C-4 Report on Nominal Pulse Spacing (NPS) - continued

The purpose of this section is to show a frequency distribution chart of Point Density and Nominal Pulse Spacing (NPS) for the generated LAS swaths.



## *C-6.1 Report on Spatial Distribution and Regularity*

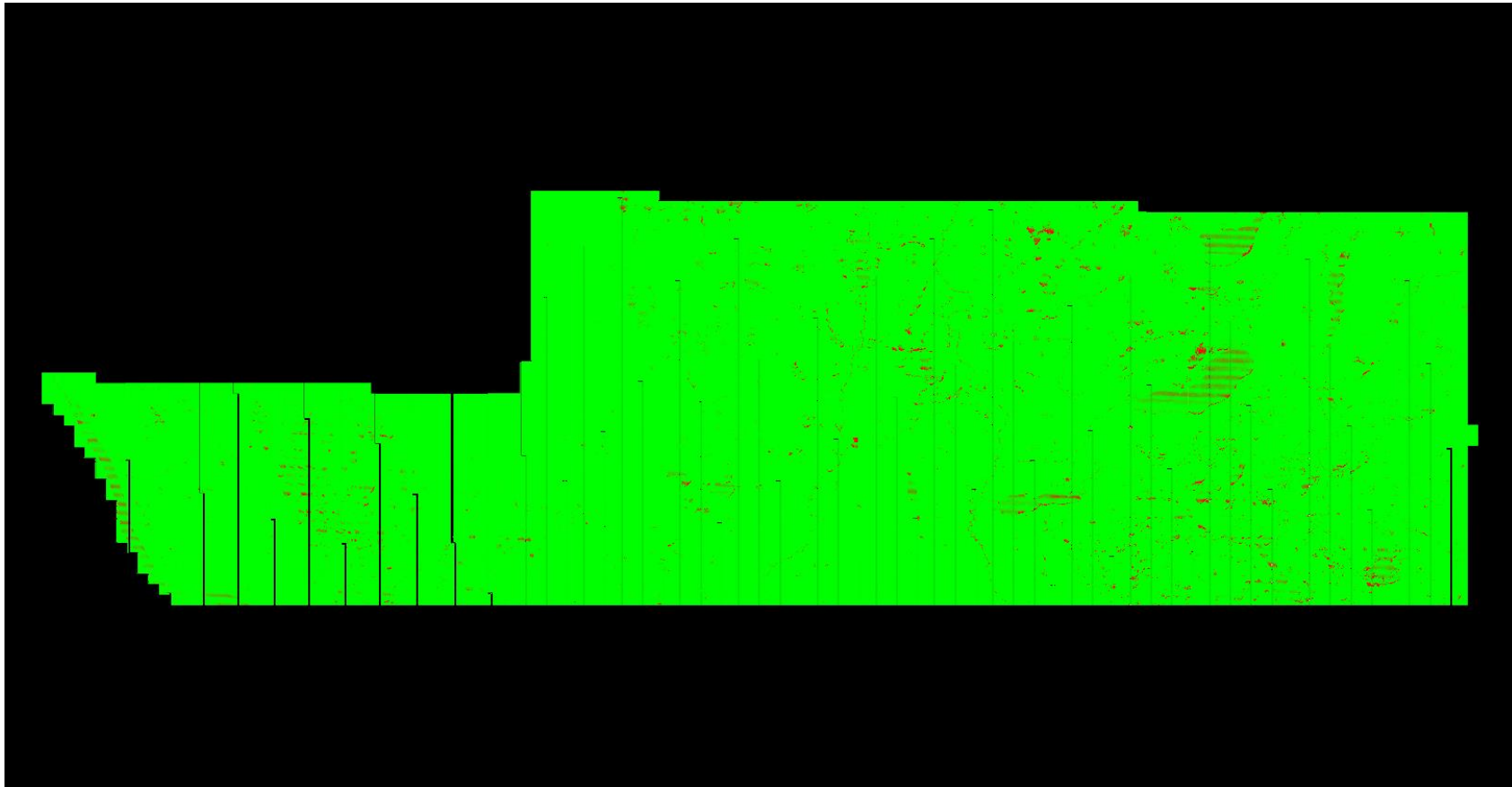
The USGS Lidar Base Specification 2023 rev. A states: "The process described in this section relates only to regular and uniform point distribution. The process does not relate to, nor can it be used for, the assessment of NPS, ANPS, or data voids. The spatial distribution of geometrically usable points will be uniform and regular. Collections will be planned and executed to produce an aggregate first return point data that approaches a uniform, regular lattice of points. The regularity of the point pattern and density throughout the dataset is important and will be assessed by using the following method:

- (1) Assess only nonwithheld, first return points of a single File Source ID.
- (2) Exclude acceptable data voids previously identified in this specification.
- (3) Generate a density raster from the data with a cell size equal to twice the design ANPS.
- (4) Populate the raster using a count of points within each cell.
- (5) Ensure that at least 90 percent of the cells in the grid contain at least one lidar point.

The USGS–NGP may allow lower passing thresholds for this requirement in areas of substantial relief where maintaining a regular and uniform point distribution is impractical."

The purpose of this section is to show graphically where unacceptable lidar spatial distributions are located. Lidar spatial distribution can be affected by problems in flight planning (e.g., incorrect scan frequency / pulse rate pairing) or flight execution (e.g., strong headwinds or tailwinds), a lack of coverage at the time of collection, water bodies not reflecting the laser beam back to the receiver, lidar occlusions caused by objects above ground like tall buildings, etc. Not all lidar spatial distribution violations are truly problematic. The intention of this test is to isolate the first example of lidar spatial distribution violations - problems in flight planning or flight execution. A close inspection must be done on the results to determine if the lidar spatial distribution was collected and processed to meet the intended specifications. Any 'Exclusion Shapefile' pathed out on the Input Tab of this tool was applied to the processing for this test to avoid skewing the results with known areas of no data.

## C-6.1 Report on Spatial Distribution and Regularity - continued



Cell size: 0.700 Meter

■ Green: Cells containing at least one first return lidar point (number of cells = 8,392,369,670)

■ Red: Cells not containing at least one first return lidar point (number of cells = 105,661,146)

■ Background Color: Null data

Percentage of cells in the grid that contain at least one first return lidar point = 98.76% (Requirement is typically 90%)

See JPG2000 file for full resolution results

## *C-6.2 Report on Spatial Distribution and Regularity of Individual Swaths*

File	Percentage of Cells that Contain $\geq 1$
------	--

---

Pass: 80 files (percentage  $\geq 90\%$ )

Fail: 5 files (percentage  $< 90\%$ )



## C-7 Report on Collection Conditions

The USGS Lidar Base Specification 2023 rev. A states: "Atmospheric conditions shall be cloud and fog free between the aircraft and ground during all collection operations. Ground conditions will be snow free. Very light, undrifted snow may be acceptable with prior approval. Ground conditions shall be free of extensive flooding or any other type of inundation. Leaf-off vegetation conditions are preferred. Penetration to the ground shall be adequate to produce an accurate and reliable bare-earth surface for the prescribed QL. Collections planned for leaf-on collections shall be approved by the USGS-NGP/3DEP prior to issuance of a task order or contract."

*Note: Not all collection condition requirements can be checked with this reporting tool.*

The purpose of this section is to provide a hyperlink to a NOAA website that shows the snow depth map for the extent of the lidar at the time of collection.

### Ground Conditions:

Flight Date: 05/25/2023

[http://www.nohrsc.noaa.gov/interactive/html/map.html?mode=pan&extents=us&zoom=&loc=45.5930042388644+N%2C+95.9778816998403+W&ql=station&var=ssm\\_depth&dy=2023&dm=5&dd=25&dh=22&snap=1&o5=1&o6=1&o11=1&o9=1&o13=1&lbl=m&o7=1&min\\_x=-96.8328422879031&min\\_y=45.3951721608942&max\\_x=-95.1229211117775&max\\_y=45.7908363168345&coord\\_x=-95.9778816998403&coord\\_y=45.5930042388644&zbox\\_n=&zbox\\_s=&zbox\\_e=&zbox\\_w=&metric=0&bgvar=dem&shdvar=shading&width=800&height=450&nw=800&nh=450&h\\_o=0&font=0&js=1&uc=0](http://www.nohrsc.noaa.gov/interactive/html/map.html?mode=pan&extents=us&zoom=&loc=45.5930042388644+N%2C+95.9778816998403+W&ql=station&var=ssm_depth&dy=2023&dm=5&dd=25&dh=22&snap=1&o5=1&o6=1&o11=1&o9=1&o13=1&lbl=m&o7=1&min_x=-96.8328422879031&min_y=45.3951721608942&max_x=-95.1229211117775&max_y=45.7908363168345&coord_x=-95.9778816998403&coord_y=45.5930042388644&zbox_n=&zbox_s=&zbox_e=&zbox_w=&metric=0&bgvar=dem&shdvar=shading&width=800&height=450&nw=800&nh=450&h_o=0&font=0&js=1&uc=0)

Flight Date: 05/26/2023

[http://www.nohrsc.noaa.gov/interactive/html/map.html?mode=pan&extents=us&zoom=&loc=45.5930042388644+N%2C+95.9778816998403+W&ql=station&var=ssm\\_depth&dy=2023&dm=5&dd=26&dh=21&snap=1&o5=1&o6=1&o11=1&o9=1&o13=1&lbl=m&o7=1&min\\_x=-96.8328422879031&min\\_y=45.3951721608942&max\\_x=-95.1229211117775&max\\_y=45.7908363168345&coord\\_x=-95.9778816998403&coord\\_y=45.5930042388644&zbox\\_n=&zbox\\_s=&zbox\\_e=&zbox\\_w=&metric=0&bgvar=dem&shdvar=shading&width=800&height=450&nw=800&nh=450&h\\_o=0&font=0&js=1&uc=0](http://www.nohrsc.noaa.gov/interactive/html/map.html?mode=pan&extents=us&zoom=&loc=45.5930042388644+N%2C+95.9778816998403+W&ql=station&var=ssm_depth&dy=2023&dm=5&dd=26&dh=21&snap=1&o5=1&o6=1&o11=1&o9=1&o13=1&lbl=m&o7=1&min_x=-96.8328422879031&min_y=45.3951721608942&max_x=-95.1229211117775&max_y=45.7908363168345&coord_x=-95.9778816998403&coord_y=45.5930042388644&zbox_n=&zbox_s=&zbox_e=&zbox_w=&metric=0&bgvar=dem&shdvar=shading&width=800&height=450&nw=800&nh=450&h_o=0&font=0&js=1&uc=0)

Flight Date: 05/27/2023

[http://www.nohrsc.noaa.gov/interactive/html/map.html?mode=pan&extents=us&zoom=&loc=45.5930042388644+N%2C+95.9778816998403+W&ql=station&var=ssm\\_depth&dy=2023&dm=5&dd=27&dh=20&snap=1&o5=1&o6=1&o11=1&o9=1&o13=1&lbl=m&o7=1&min\\_x=-96.8328422879031&min\\_y=45.3951721608942&max\\_x=-95.1229211117775&max\\_y=45.7908363168345&coord\\_x=-95.9778816998403&coord\\_y=45.5930042388644&zbox\\_n=&zbox\\_s=&zbox\\_e=&zbox\\_w=&metric=0&bgvar=dem&shdvar=shading&width=800&height=450&nw=800&nh=450&h\\_o=0&font=0&js=1&uc=0](http://www.nohrsc.noaa.gov/interactive/html/map.html?mode=pan&extents=us&zoom=&loc=45.5930042388644+N%2C+95.9778816998403+W&ql=station&var=ssm_depth&dy=2023&dm=5&dd=27&dh=20&snap=1&o5=1&o6=1&o11=1&o9=1&o13=1&lbl=m&o7=1&min_x=-96.8328422879031&min_y=45.3951721608942&max_x=-95.1229211117775&max_y=45.7908363168345&coord_x=-95.9778816998403&coord_y=45.5930042388644&zbox_n=&zbox_s=&zbox_e=&zbox_w=&metric=0&bgvar=dem&shdvar=shading&width=800&height=450&nw=800&nh=450&h_o=0&font=0&js=1&uc=0)

Flight Date: 05/28/2023

[http://www.nohrsc.noaa.gov/interactive/html/map.html?mode=pan&extents=us&zoom=&loc=45.5930042388644+N%2C+95.9778816998403+W&ql=station&var=ssm\\_depth&dy=2023&dm=5&dd=28&dh=19&snap=1&o5=1&o6=1&o11=1&o9=1&o13=1&lbl=m&o7=1&min\\_x=-96.8328422879031&min\\_y=45.3951721608942&max\\_x=-95.1229211117775&max\\_y=45.7908363168345&coord\\_x=-95.9778816998403&coord\\_y=45.5930042388644&zbox\\_n=&zbox\\_s=&zbox\\_e=&zbox\\_w=&metric=0&bgvar=dem&shdvar=shading&width=800&height=450&nw=800&nh=450&h\\_o=0&font=0&js=1&uc=0](http://www.nohrsc.noaa.gov/interactive/html/map.html?mode=pan&extents=us&zoom=&loc=45.5930042388644+N%2C+95.9778816998403+W&ql=station&var=ssm_depth&dy=2023&dm=5&dd=28&dh=19&snap=1&o5=1&o6=1&o11=1&o9=1&o13=1&lbl=m&o7=1&min_x=-96.8328422879031&min_y=45.3951721608942&max_x=-95.1229211117775&max_y=45.7908363168345&coord_x=-95.9778816998403&coord_y=45.5930042388644&zbox_n=&zbox_s=&zbox_e=&zbox_w=&metric=0&bgvar=dem&shdvar=shading&width=800&height=450&nw=800&nh=450&h_o=0&font=0&js=1&uc=0)

## *C-7 Report on Collection Conditions - Continued*

### Ground Conditions:

Flight Date: 06/15/2023

[http://www.nohrsc.noaa.gov/interactive/html/map.html?mode=pan&extents=us&zoom=&loc=45.5930042388644+N%2C+95.9778816998403+W&ql=station&var=ssm\\_depth&dy=2023&dm=6&dd=15&dh=21&snap=1&o5=1&o6=1&o11=1&o9=1&o13=1&lbl=m&o7=1&min\\_x=-96.8328422879031&min\\_y=45.3951721608942&max\\_x=-95.1229211117775&max\\_y=45.7908363168345&coord\\_x=-95.9778816998403&coord\\_y=45.5930042388644&zbox\\_n=&zbox\\_s=&zbox\\_e=&zbox\\_w=&metric=0&bgvar=dem&shdvar=shading&width=800&height=450&nw=800&nh=450&h\\_o=0&font=0&js=1&uc=0](http://www.nohrsc.noaa.gov/interactive/html/map.html?mode=pan&extents=us&zoom=&loc=45.5930042388644+N%2C+95.9778816998403+W&ql=station&var=ssm_depth&dy=2023&dm=6&dd=15&dh=21&snap=1&o5=1&o6=1&o11=1&o9=1&o13=1&lbl=m&o7=1&min_x=-96.8328422879031&min_y=45.3951721608942&max_x=-95.1229211117775&max_y=45.7908363168345&coord_x=-95.9778816998403&coord_y=45.5930042388644&zbox_n=&zbox_s=&zbox_e=&zbox_w=&metric=0&bgvar=dem&shdvar=shading&width=800&height=450&nw=800&nh=450&h_o=0&font=0&js=1&uc=0)

Flight Date: 06/19/2023

[http://www.nohrsc.noaa.gov/interactive/html/map.html?mode=pan&extents=us&zoom=&loc=45.5930042388644+N%2C+95.9778816998403+W&ql=station&var=ssm\\_depth&dy=2023&dm=6&dd=19&dh=22&snap=1&o5=1&o6=1&o11=1&o9=1&o13=1&lbl=m&o7=1&min\\_x=-96.8328422879031&min\\_y=45.3951721608942&max\\_x=-95.1229211117775&max\\_y=45.7908363168345&coord\\_x=-95.9778816998403&coord\\_y=45.5930042388644&zbox\\_n=&zbox\\_s=&zbox\\_e=&zbox\\_w=&metric=0&bgvar=dem&shdvar=shading&width=800&height=450&nw=800&nh=450&h\\_o=0&font=0&js=1&uc=0](http://www.nohrsc.noaa.gov/interactive/html/map.html?mode=pan&extents=us&zoom=&loc=45.5930042388644+N%2C+95.9778816998403+W&ql=station&var=ssm_depth&dy=2023&dm=6&dd=19&dh=22&snap=1&o5=1&o6=1&o11=1&o9=1&o13=1&lbl=m&o7=1&min_x=-96.8328422879031&min_y=45.3951721608942&max_x=-95.1229211117775&max_y=45.7908363168345&coord_x=-95.9778816998403&coord_y=45.5930042388644&zbox_n=&zbox_s=&zbox_e=&zbox_w=&metric=0&bgvar=dem&shdvar=shading&width=800&height=450&nw=800&nh=450&h_o=0&font=0&js=1&uc=0)

Flight Date: 06/20/2023

[http://www.nohrsc.noaa.gov/interactive/html/map.html?mode=pan&extents=us&zoom=&loc=45.5930042388644+N%2C+95.9778816998403+W&ql=station&var=ssm\\_depth&dy=2023&dm=6&dd=20&dh=21&snap=1&o5=1&o6=1&o11=1&o9=1&o13=1&lbl=m&o7=1&min\\_x=-96.8328422879031&min\\_y=45.3951721608942&max\\_x=-95.1229211117775&max\\_y=45.7908363168345&coord\\_x=-95.9778816998403&coord\\_y=45.5930042388644&zbox\\_n=&zbox\\_s=&zbox\\_e=&zbox\\_w=&metric=0&bgvar=dem&shdvar=shading&width=800&height=450&nw=800&nh=450&h\\_o=0&font=0&js=1&uc=0](http://www.nohrsc.noaa.gov/interactive/html/map.html?mode=pan&extents=us&zoom=&loc=45.5930042388644+N%2C+95.9778816998403+W&ql=station&var=ssm_depth&dy=2023&dm=6&dd=20&dh=21&snap=1&o5=1&o6=1&o11=1&o9=1&o13=1&lbl=m&o7=1&min_x=-96.8328422879031&min_y=45.3951721608942&max_x=-95.1229211117775&max_y=45.7908363168345&coord_x=-95.9778816998403&coord_y=45.5930042388644&zbox_n=&zbox_s=&zbox_e=&zbox_w=&metric=0&bgvar=dem&shdvar=shading&width=800&height=450&nw=800&nh=450&h_o=0&font=0&js=1&uc=0)

## DPH-1.1 Report on ASPRS LAS File Format (Tiled Data) - Compliance

The USGS Lidar Base Specification 2023 rev. A states: "All point deliverables shall be in LAS format, version 1.4-R15, using Point Data Record Format 6, 7, 8, 9, or 10. Data producers are encouraged to review the LAS specification version 1.4-R15 in detail (ASPRS, 2019)."

The purpose of this section is to show a table of LAS 1.4 compliance test results for each tiled file.

---

File	LAS Version/PDRF	System ID	Legacy Point Count	Legacy Return Counts	File Source ID	Global Encoding	VLRs / EVLRs	WKT	Intensity	Point Count with Bad Return Info
------	------------------	-----------	--------------------	----------------------	----------------	-----------------	--------------	-----	-----------	----------------------------------

---

Pass: 4164 files

Fail: 0 files

## DPH-1.2 Report on ASPRS LAS File Format (Tiled Data) - File Integrity

The purpose of this section is to show a table of LAS 1.4 file integrity test results for each tiled file.

---

File	Number of Points Outside Extent	Offset To Point Data	Offset To EVLR	Number Of Points	Number of Points by Return	Number of Duplicate Points	Return Counts in LAS Header
------	---------------------------------	----------------------	----------------	------------------	----------------------------	----------------------------	-----------------------------

---

Pass: 4164 files

Fail: 0 files

## DPH-1.3 Report on ASPRS LAS File Format (Tiled Data) - Informational

The purpose of this section is to show a table of LAS 1.4 file informational test results for each tiled file.

File	GPS Time min	GPS Time max	Extended Scan Angle	Scan Angle Rank	Scanner Channel	Scan Direction	Edge of Flight Line	User Data	Counts for Synthetic	Key-points	Withheld	Overlap
	369060731.7	371311036.75	[-4050, 5058]	[-24.3, 30.348]	[0, 3]	[0, 1]	[0, 1]	[0, 100]	53442344	0	441086360	0

Pass: 4164 files

Fail: 0 files

## *DPH-1.4 Report on Elevation by Class for Tiled Data*

The purpose of this section is to show a table of the Minimum and Maximum elevation (Z) values by Class for each tiled file.

File	Class	Z Min	Z Max
	1	253.306	2264.947
	2	272.883	446.24
	7	-588.199	444.882
	9	291.615	440.421
	17	298.496	437.417
	18	233.399	2330.828
	20	294.3	440.369



## *DPH-3 Report on Time of Global Positioning System Data*

The USGS Lidar Base Specification 2023 rev. A states: "GPS data shall be recorded as Adjusted GPS Time (Standard [satellite] GPS time minus  $1 \times 10^9$ ) at a precision sufficient to allow unique timestamps for each pulse. The encoding tag in the LAS header shall be properly set. See LAS specification version 1.4-R15 (ASPRS, 2019)."

The purpose of this section is to show the GPS time type within the LAS files for the lidar data.

All LAS files are formatted as Adjusted GPS Time.

## *DPH-4 Report on Datums*

The USGS Lidar Base Specification 2023 rev. A states: "All data collected shall be tied to the datums listed below:

For the CONUS, unless otherwise specified by the user and agreed to in advance by the USGS–NGP:

- The horizontal datum for latitude and longitude and ellipsoid heights will be the North American Datum of 1983 (NAD 83) using the most recently NGS-published adjustment (currently NAD 83, epoch 2010.00, realization of 2011).
- The vertical datum for orthometric heights will be the North American Vertical Datum of 1988 (NAVD 88).
- The geoid model used to convert between ellipsoid heights and orthometric heights will be the latest hybrid geoid model of NGS, supporting the latest realization of NAD 83 (currently [2020] GEOID18 model)."

*Note: See the specification document for requirements concerning non-contiguous areas of the United States.*

The purpose of this section is to show the datums of the LAS files for the lidar tiled data. The project specifications should be reviewed to ensure that the Datums listed in this report are as expected.

All LAS tiled files are defined as:

Horizontal Datum = NAD83 (National Spatial Reference System 2011)

Horizontal EPSG Code = 1116

Vertical Datum = North American Vertical Datum 1988

Vertical EPSG Code = 5103

## *DPH-5 Report on Coordinate Reference System*

The USGS Lidar Base Specification 2023 rev. A states: "Lidar data and all related or derived data and products shall be processed and delivered in a single CRS agreed upon in advance of data collection by the USGS–NGP and all project partners and cooperators. The complete CRS definition and its WKT representation, both horizontal and vertical, shall be documented as part of the agreement. In all cases, the CRS used shall be recognized and published by the European Petroleum Survey Group (EPSG). Each project shall be processed and delivered in a single CRS, except in cases where a project area covers multiple CRSs such that processing in a single CRS would introduce unacceptable distortions in part of the project area. In such cases, the project area is to be split into subareas appropriate for each CRS. The following requirements apply to the subareas:

- Each subarea shall be processed and delivered as a separate subproject with its own CRS.
- All requirements for a single project will apply to each subproject.
- The DPA boundaries of adjacent subareas shall have topologically coincident boundaries along their common borders.
- For each project or subarea, all spatial data within the area shall be in the same CRS.
- An additional CRS delivery, arranged in advance, may also be required on specific projects."

The purpose of this section is to show the coordinate reference systems of the LAS files for the lidar data. The project specifications should be reviewed to ensure that the Coordinate Reference Systems listed in this report are as expected.

All LAS files are defined as:

Horizontal CRS = NAD83(2011) / UTM zone 15N  
EPSG Code = 6344  
Vertical CRS = NAVD88 height  
EPSG Code = 5703  
Geoid Model = US Geoid Model of 2018

## *DPH-6 Report on Units of Reference*

The USGS Lidar Base Specification 2023 rev. A states: "Horizontal and vertical units of measure will be in the same units (meters preferred). Mixed units (such as horizontal units of meters and vertical units of feet) are not recommended. Projects delivered with mixed units shall be considered as varying from the specification and will be noted as such in the spatial metadata. All references to the units of measure 'Feet' and 'Foot' shall specify 'International,' 'Intl,' 'U.S. Survey,' or 'US.' For linear data: Airborne acquired data shall be reported with a level of precision of 1/100 (0.01), and Survey point data shall be reported with a level of precision of 1/1000 (0.001)."

The purpose of this section is to show the horizontal and vertical units of the LAS files for the lidar data. The project specifications should be reviewed to ensure that the Units listed in this report are as expected.

All LAS files are defined as:

Horizontal Unit = Meter  
Vertical Unit = Meter

## *DPH-7 Report on File Source ID*

The USGS Lidar Base Specification 2023 rev. A states: "At the time of its creation and prior to any further processing, each swath shall be assigned a unique file source ID, and each point within the swath shall be assigned a point source ID equal to the file source ID. The point source ID on each point shall be persisted unchanged throughout all processing and delivery. The file source ID for tiled LAS files shall be set to 0. See LAS specification version 1.4-R15 (ASPRS, 2019)."

The purpose of this section is to report on the File Source ID for the lidar data.

0 tiled files are in violation with non-zero File Source ID.

## DPH-8 Report on Smooth Surface Precision (intraswath)

The USGS Lidar Base Specification 2023 rev. A states: "Precision will be calculated as: Precision = Range - (Slope x Cellsize x 1.414) where:

- Precision, Range, and Slope are rasters (square cells assumed);
- Range is the difference between the highest and lowest lidar points in each pixel;
- Slope is the maximum slope of the cell to its 8 neighbors, expressed as a decimal value, calculated from the minimum elevation in each cell; and
- Cellsize is the edge dimension of the cell. 1.414 is the factor to compute the diagonal dimension of the pixel.
- Cellsize is set to the ANPS, rounded up to the next integer, and then doubled:  
 $Cellsize = CEILING(ANPS) \times 2$ , where CEILING is a function to round ANPS up to the next integer.

Assessment of precision will be made on hard surfaced areas (for example, parking lots or large rooftops) containing only single return lidar points. Sample areas for assessment of precision will be approximately 100 pixels. To the degree allowed by the data and the project environment, multiple sample areas representing the full width of the swath(s) (left, center, and right) will be examined. Multiple single swaths from a single lift may be used if needed to sample the full swath width. At a minimum, precision shall be assessed against for each lift of each aircraft/instrument combination used on the project. Additional areas may be checked at the discretion of the USGS–NGP. Each test area will be evaluated using a signed difference raster with a cell size equal to the ANPS, rounded up to the next integer, then doubled ( $Cellsize=CEILING(ANPS) \times 2$ ). The difference rasters will be statistically summarized to verify that root mean square difference in the z direction (RMSDz) values do not exceed the limits set forth in table 2 for the QL of information that is being collected."

**Table 2. Relative vertical accuracy for light detection and ranging swath data.**

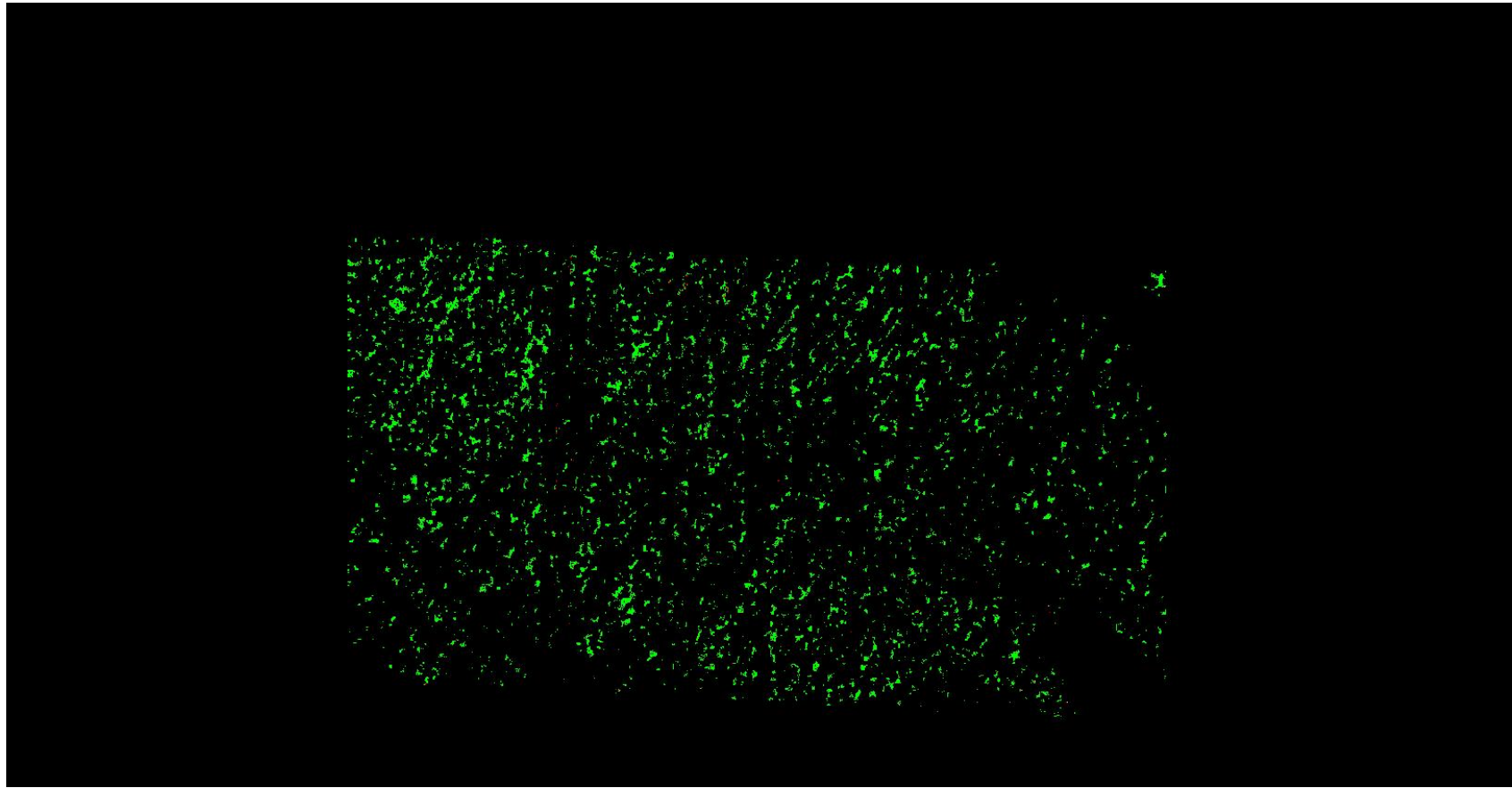
[QL, quality level; RMSD<sub>z</sub>, root mean square difference in the z direction; m, meter; ≤, less than or equal to]

Quality level	Smooth surface repeatability, RMSD <sub>z</sub> (m)	Swath overlap difference, RMSD <sub>z</sub> (m)
QL0	≤0.03	≤0.04
QL1	≤0.06	≤0.08
QL2	≤0.06	≤0.08
QL3	≤0.12	≤0.16

The purpose of this section is to evaluate smooth surface repeatability / intraswath precision by measuring departures from planarity of single returns from hard planar surfaces, normalizing for actual variation in the surface elevation. Repeatability of clusters of single returns is then assessed at multiple locations within hard surfaced areas (for example, parking lots or large rooftops).



## DPH-8 Report on Smooth Surface Precision (intraswath) - continued



A maximum vertical separation cutoff has been applied to this graphic for the purpose of masking out disruptive features that are not applicable for depicting sensor noise within individual swaths (e.g., trees, moving cars, etc.).

## *DPH-10 Report on Check Points*

The USGS Lidar Base Specification 2023 rev. A states: "Data producers are encouraged to carefully review the requirements in the "Positional Accuracy Standards for Digital Geospatial Data" (ASPRS, 2014). Check points for NVA assessments shall be surveyed in clear, open areas (which typically produce only single lidar returns) devoid of vegetation and other vertical artifacts (such as boulders, large riser pipes, and vehicles). Check points shall not be located on ground that has been plowed or otherwise disturbed. The same check points may be used for NVA assessment of the point data and DEM. Check points for VVA assessments shall be surveyed in vegetated areas (typically characterized by multiple return lidar). Check points will be located in areas having a minimum homogeneous area of (ANPS\*5) squared, with less than one-third of the required RMSEz deviation from a low-slope (<10 degree) plane. In land covers other than forested and dense urban, the tested check point will have no obstructions above 15 degrees over the horizon. All tested locations will be photographed showing the position of the survey tripod and the ground condition of the surrounding area. Control points used in the calibration process for data acquisition shall not be used as check points. Check points shall be an independent set of points used for the sole purpose of assessing the vertical accuracy of the project. Every checkpoint used to assess absolute vertical accuracy shall have a corresponding ground photograph with the following requirements:

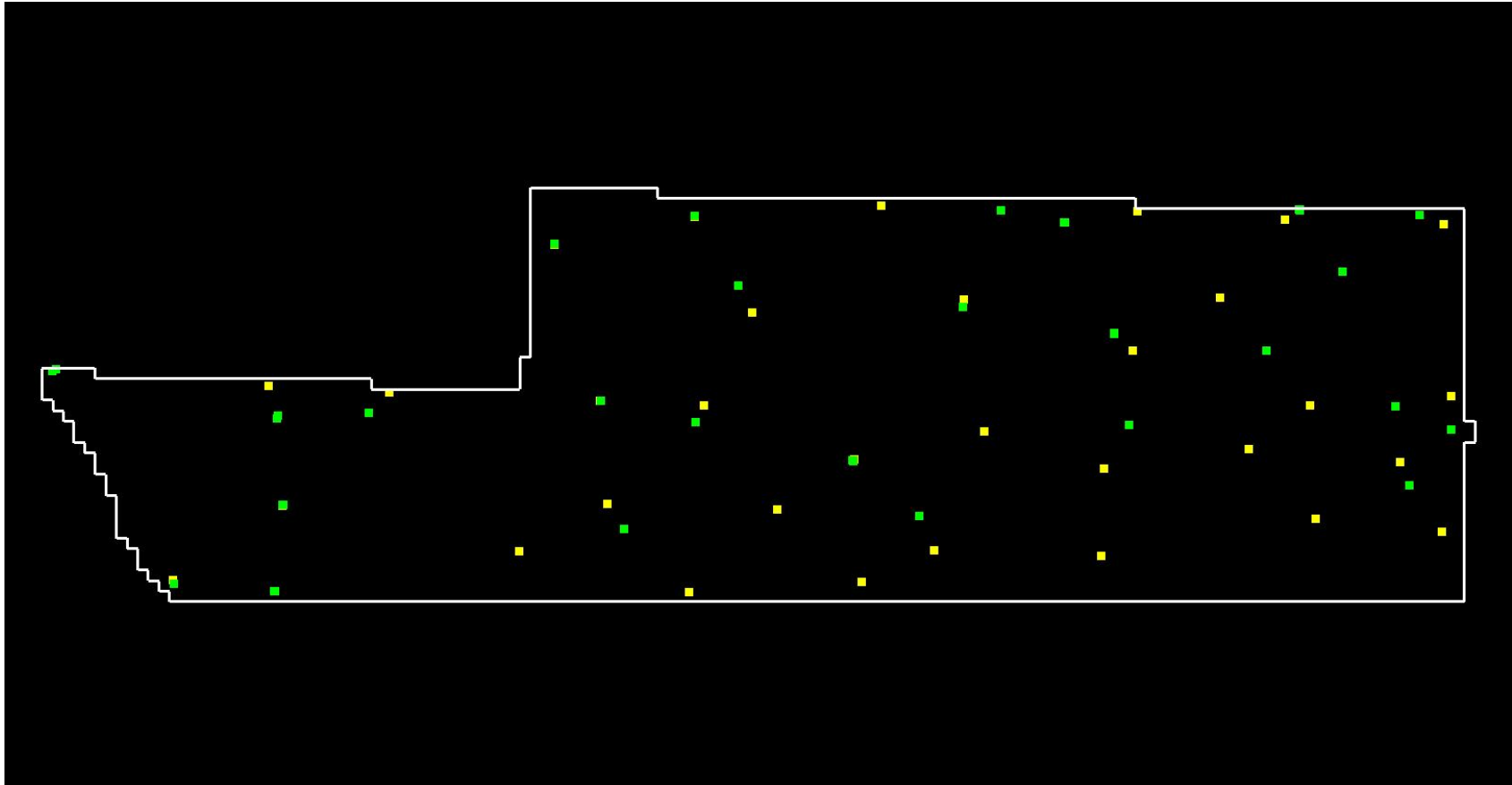
- Photographs shall be captured at the time of the checkpoint survey.
- Photographs shall be taken from each of the cardinal points (North, South, East, and West).
- GPS survey equipment shall be in view so that the surrounding environment is recorded with respect to the point location being collected.
- Photos shall be taken during daylight hours.
- Photographs shall be of sufficient spatial resolution to enable interpretation of terrain undulations and vegetative cover surrounding the checkpoint for a minimum of 10 feet in all directions surrounding checkpoint.
- All photographs shall be delivered
  - embedded in a single PDF document, preferably in the ground survey report, or
  - as individual images in sub-directories.
- All images shall be labeled with, or image file names shall include, the checkpoint ID.

The quantity and location of check points shall meet the following requirements, unless alternative criteria are approved by the USGS-NGP in advance (see ASPRS [2014] for additional information):

- The ASPRS-recommended total number of check points for a given project size shall be met.
- The ASPRS-recommended distribution of the total number of check points between NVA and VVA assessments shall be met.
- Check points within each assessment type (NVA and VVA) will be well-distributed across the entire project area. See "Glossary" section at the end of this specification for a definition of "well-distributed."
- Within each assessment type, check points will be distributed among all constituent land cover types in approximate proportion to the areas of those land cover types (ASPRS, 2014)."
- All checkpoints shall be located within the DPA.

The purpose of this section is to show check points (NVA and VVA).

*DPH-10 Report on Check Points - continued*



Yellow points are NVA, green points are VVA.  
White polygon is defined project area (DPA) boundary

## DPH-10 Report on Check Points - continued

Total check points: 84

Check points in defined project area (DPA): 84

Total NVA check points in defined project area (DPA): 37

Total VVA check points in defined project area (DPA): 47

Total defined project area (DPA): 4164.000 square KM

Density of check points in defined project area (DPA): 0.020 points per square KM

TABLE C.1 RECOMMENDED NUMBER OF CHECKPOINTS BASED ON AREA

Project Area (Square Kilometers)	Horizontal Accuracy Testing of Orthoimagery and Planimetrics	Vertical and Horizontal Accuracy Testing of Elevation Data sets		
	Total Number of Static 2D/3D Checkpoints (clearly-defined points)	Number of Static 3D Checkpoints in NVA*	Number of Static 3D Checkpoints in VVA	Total Number of Static 3D Checkpoints
≤500	20	20	5	25
501-750	25	20	10	30
751-1000	30	25	15	40
1001-1250	35	30	20	50
1251-1500	40	35	25	60
1501-1750	45	40	30	70
1751-2000	50	45	35	80
2001-2250	55	50	40	90
2251-2500	60	55	45	100

\*Although vertical check points are normally not well defined, where feasible, the horizontal accuracy of lidar data sets should be tested by surveying approximately half of all NVA check points at the ends of paint stripes or other point features that are visible and can be measured on lidar intensity returns.

Source: ASPRS Positional Accuracy Standards for Digital Geospatial Data (Edition 1, Version 1.0. - November 2014)

# DPH-11 Report on Absolute Vertical Accuracy

The USGS Lidar Base Specification 2023 rev. A states: "Absolute vertical accuracy of the lidar data and the derived DEM will be assessed and reported in accordance with ASPRS (2014). Vegetated and nonvegetated land cover types shall be assessed for absolute vertical accuracy. Federal Emergency Management Agency (2003) identifies seven land cover types; National Digital Elevation Program (2004) and ASPRS (2004) reiterate the first five of those types. The way in which each of the seven classes was reported under the previous standards and how they are reported under the new ASPRS standards and by this specification are shown in table 3. Four absolute accuracy values shall be assessed and reported:

1. NVA for the point data
2. VVA for the point data
3. NVA for the DEM
4. VVA for the DEM

The minimum NVA and VVA requirements for all data, using the ASPRS methodology, are listed in table 4. Both the NVA and VVA required values shall be met. NVA for the point data shall be assessed by comparing check points surveyed for NVA assessment to a triangulated irregular network (TIN) constructed from ground-classified lidar points in those areas. VVA for the point data shall be assessed by comparing check points surveyed for VVA assessment to a triangulated irregular network (TIN) constructed from ground-classified lidar points in those areas. NVA and VVA for the DEM are assessed by comparing check points to the final bare-earth surface. The minimum required thresholds for absolute and relative accuracy may be increased by the USGS–NGP when any of the following conditions are met:

- A demonstrable, substantial, and prohibitive increase in cost is needed to obtain this accuracy, which is often the case in heavily vegetated project areas.
- An alternate specification is needed to conform to previously contracted phases of a single larger overall collection effort such as for multiyear statewide collections
- The USGS–NGP agrees that the use of an alternate specification is reasonable and in the best interest of all stakeholders."

**Table 4. Absolute vertical accuracy for light detection and ranging data and digital elevation models.**

[QL, quality level, RMSE<sub>z</sub>, root mean square error in the z direction; NVA, nonvegetated vertical accuracy; VVA, vegetated vertical accuracy; m, meter; ≤, less than or equal to]

Quality level	RMSE <sub>z</sub> (nonvegetated) (m)	NVA at the 95-percent confidence level (m)	VVA at the 95th percentile (m)
QL0	≤0.050	≤0.098	≤0.15
QL1	≤0.100	≤0.196	≤0.30
QL2	≤0.100	≤0.196	≤0.30
QL3	≤0.200	≤0.392	≤0.60

The purpose of this section is to report on the absolute vertical accuracy of the lidar data and DEMs generated from it by testing for NVA (Nonvegetated Vertical Accuracy) and VVA (Vegetated Vertical Accuracy) against surveyed ground check points.

# DPH-11 Report on Absolute Vertical Accuracy - continued

Units: Meter (/Feet)

Vertical Accuracy Class tested: 10-cm

---

Check Points in defined project area (DPA):	84
Check Points with Lidar Coverage	79
Check Points with Lidar Coverage (NVA)	37
Check Points with Lidar Coverage (VVA)	47
Average Z Error (NVA)	-0.016/-0.052
Maximum Z Error (NVA)	0.033/0.107
Median Z Error (NVA)	-0.014/-0.046
Minimum Z Error (NVA)	-0.166/-0.545
Standard deviation of Vertical Error (NVA)	0.032/0.106
Skewness of Vertical Error (NVA)	-2.646
Kurtosis of Vertical Error (NVA)	10.739
Non-vegetated Vertical Accuracy (NVA) RMSE(z) <sup>1</sup>	0.036/0.117 PASS
Non-vegetated Vertical Accuracy (NVA) at the 95% Confidence Level +/- <sup>1</sup>	0.070/0.229 PASS
FGDC/NSSDA Vertical Accuracy at the 95% Confidence Level +/-	0.070/0.229
Non-vegetated Vertical Accuracy (NVA) RMSE(z) (DEM) <sup>2</sup>	0.036/0.118 PASS
Non-vegetated Vertical Accuracy (NVA) at the 95% Confidence Level (DEM) +/- <sup>2</sup>	0.071/0.232 PASS
Vegetated Vertical Accuracy (VVA) at the 95th Percentile (TIN) +/- <sup>1</sup>	0.137/0.451 PASS
Vegetated Vertical Accuracy (VVA) at the 95th Percentile (DEM) +/- <sup>2</sup>	0.223/0.730 PASS

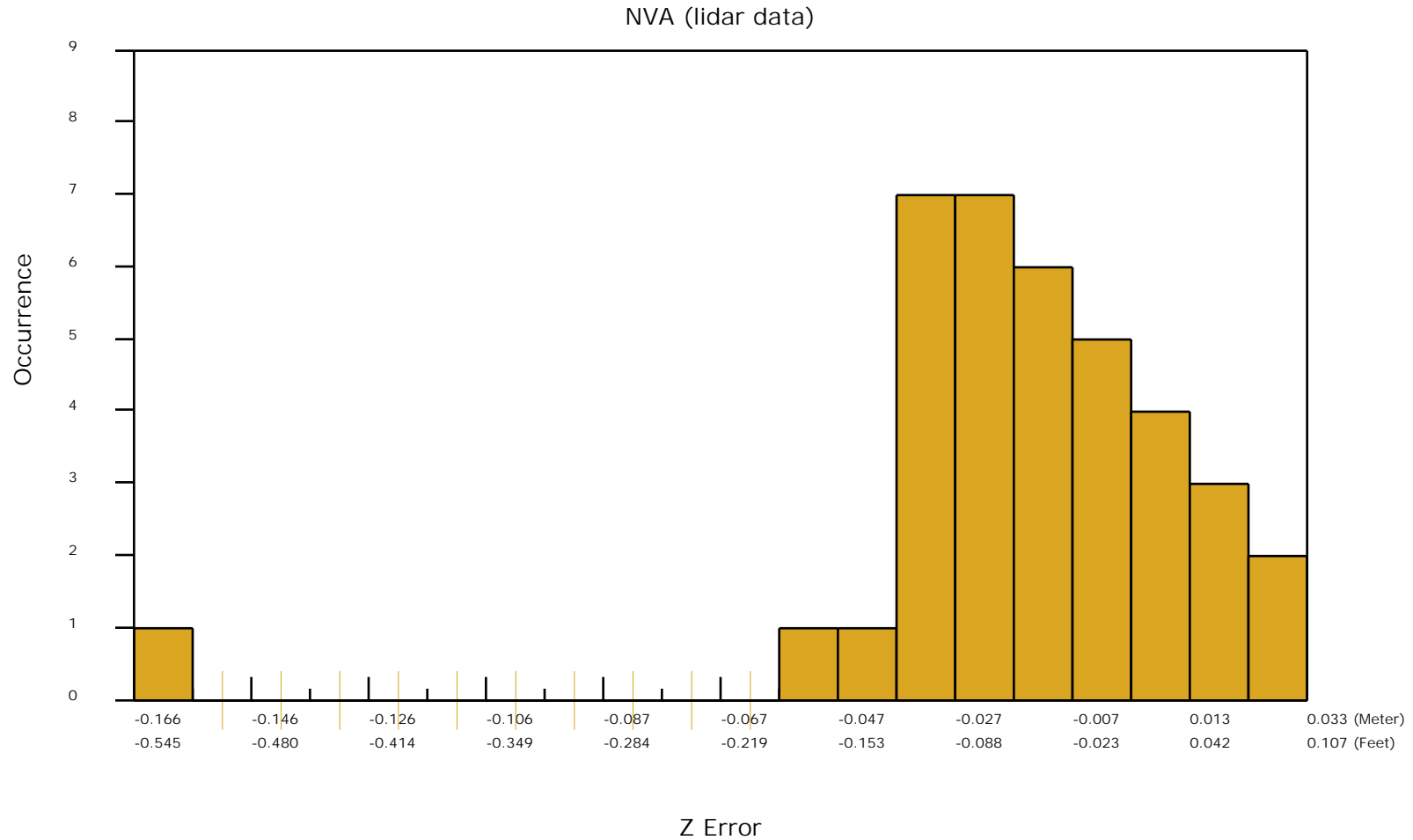
This data set was tested to meet ASPRS Positional Accuracy Standard for Digital Geospatial Data (2014) for a 10-cm RMSEz Vertical Accuracy Class. Actual NVA accuracy was found to be RMSEz = 3.6cm, equating to +/- 7.0cm at the 95% confidence level. Actual VVA accuracy was found to be +/- 22.3cm at the 95th percentile.

<sup>1</sup> This value is calculated from TIN-based testing of the lidar point cloud data.

<sup>2</sup> This value is calculated from RAM-based grid testing of the lidar data. The grid cells are sized according to the Quality Level selected, and are defined in the USGS NGP Lidar Base Specification 2023 rev. A (Table 6).

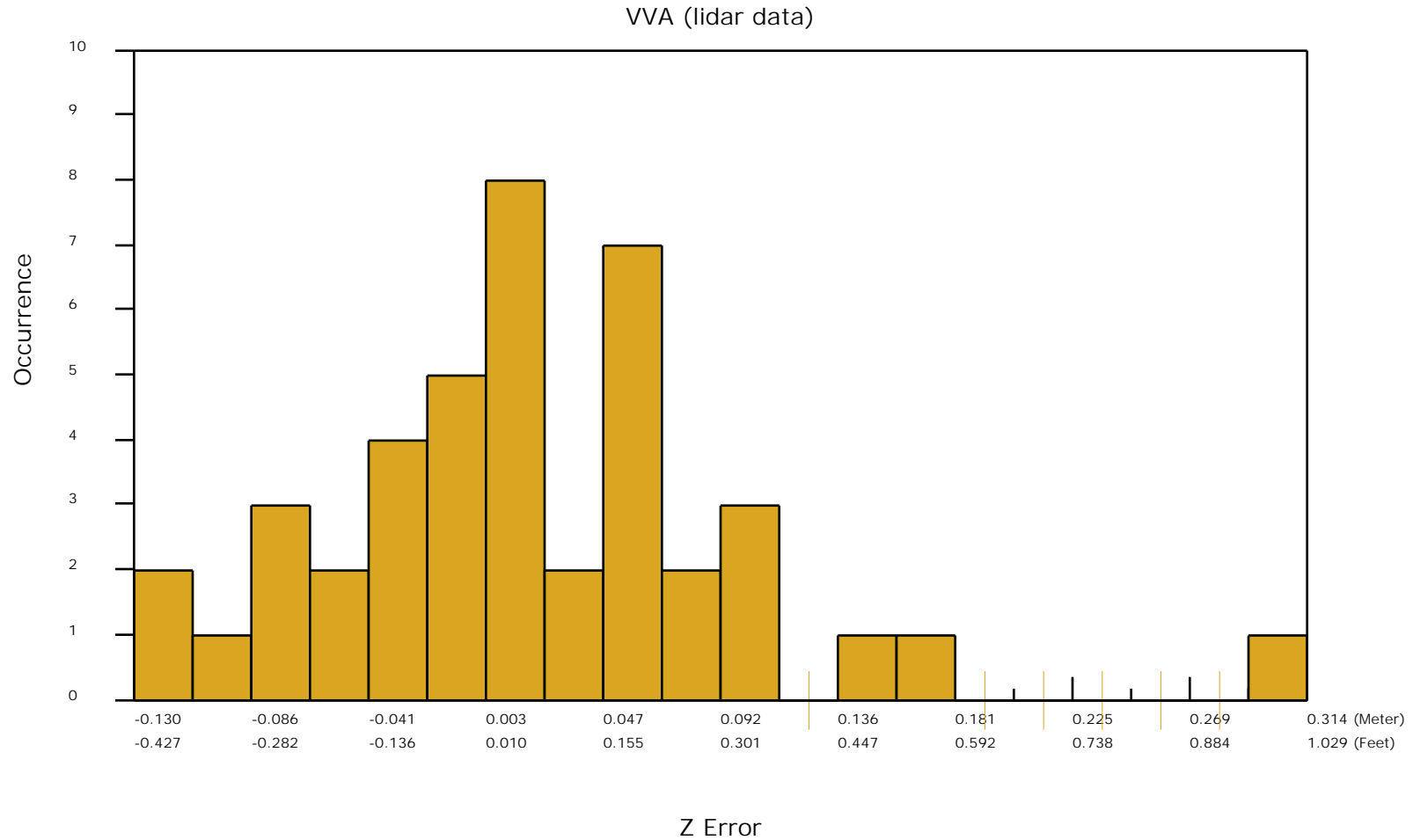
## DPH-11 Report on Absolute Vertical Accuracy - continued

The purpose of this section is to show a frequency distribution chart of the non-vegetated vertical accuracy (NVA) of the lidar point cloud data measured against surveyed ground check points.



## DPH-11 Report on Absolute Vertical Accuracy - continued

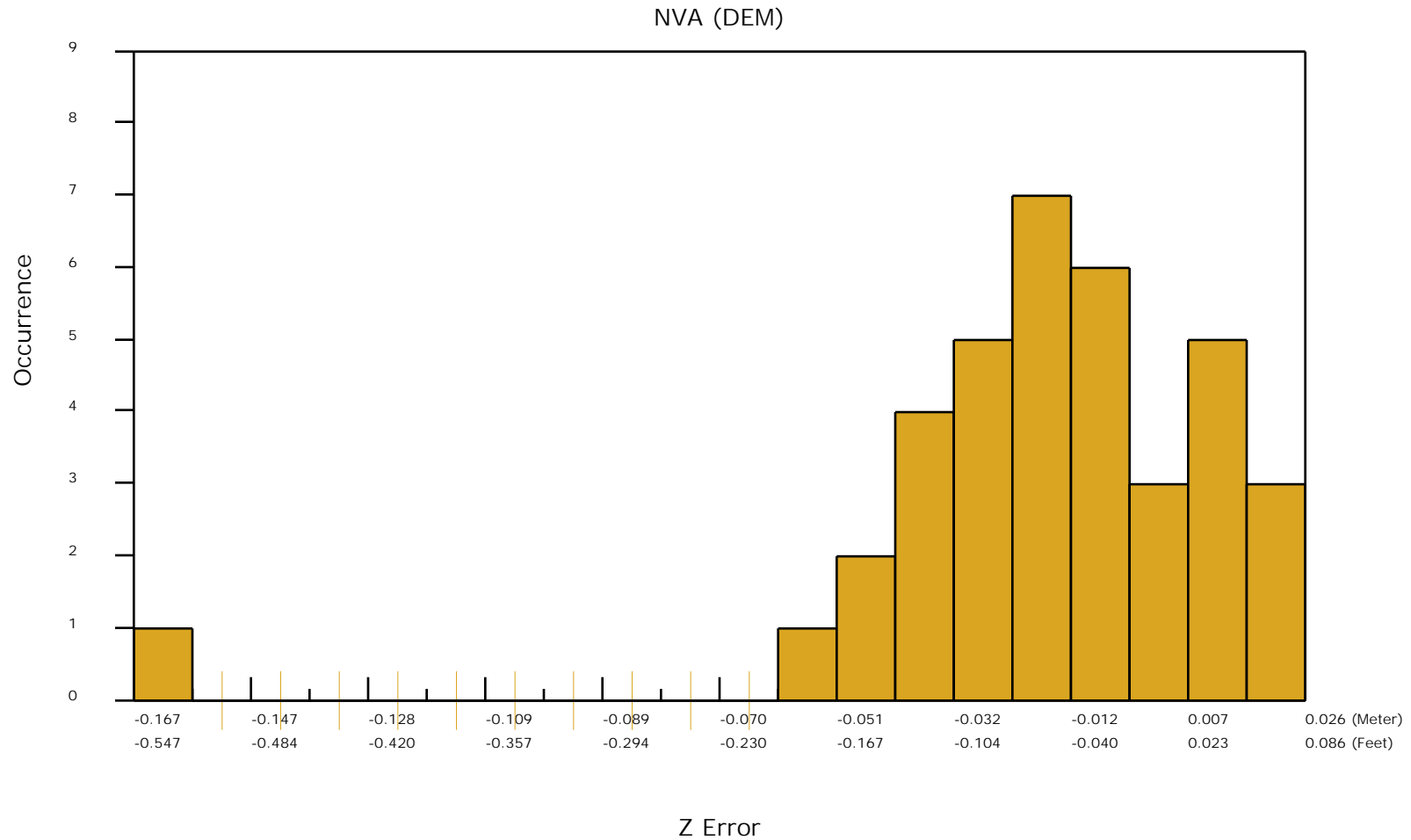
The purpose of this section is to show a frequency distribution chart of the vegetated vertical accuracy (VVA) of the lidar point cloud data measured against surveyed ground check points.





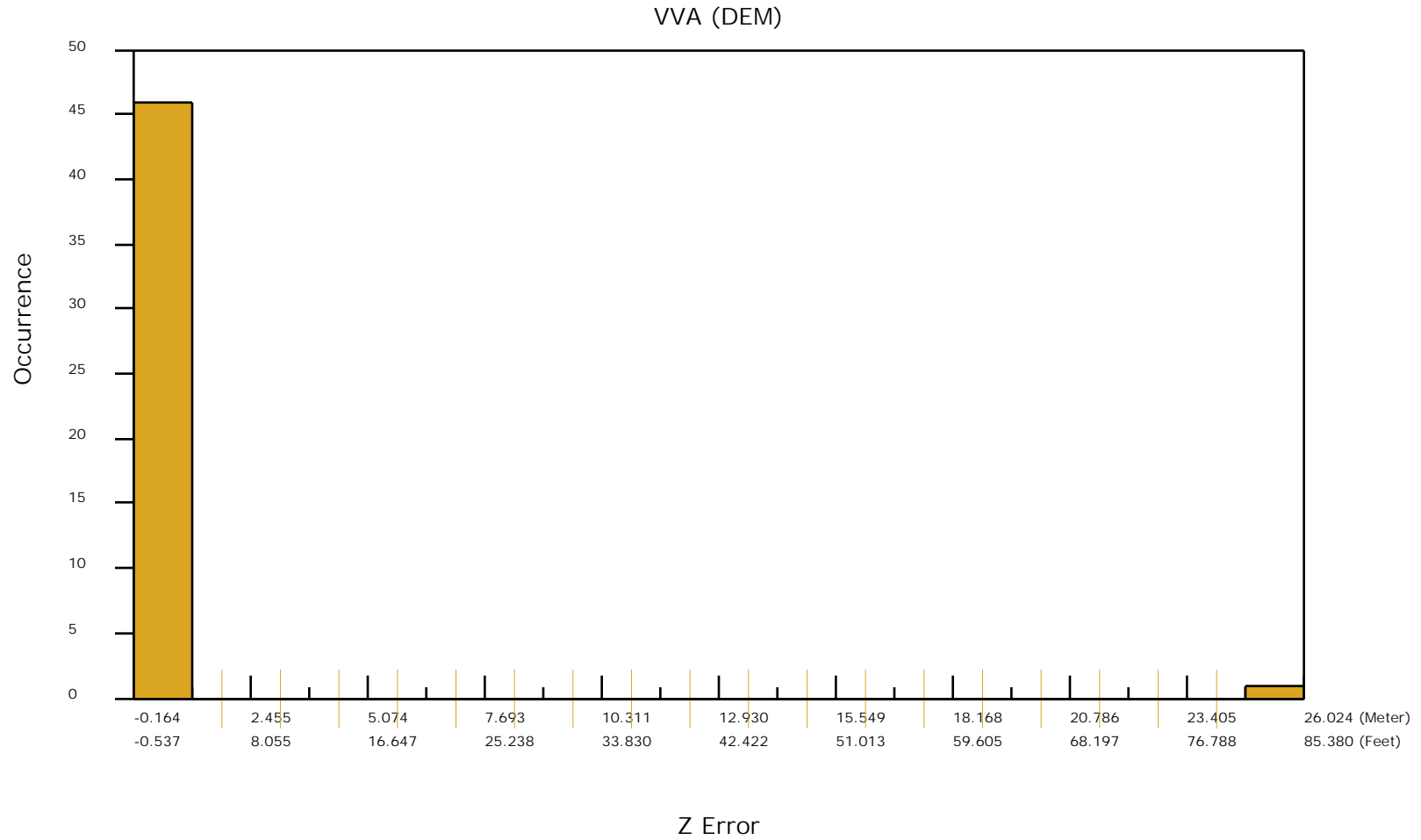
## DPH-11 Report on Absolute Vertical Accuracy - continued

The purpose of this section is to show a frequency distribution chart of the non-vegetated vertical accuracy (NVA) of the DEM data measured against surveyed ground check points.



## DPH-11 Report on Absolute Vertical Accuracy - continued

The purpose of this section is to show a frequency distribution chart of the vegetated vertical accuracy (VVA) of the DEM data measured against surveyed ground check points.



## *DPH-12 Report on Use of the LAS Withheld Bit Flag*

The USGS Lidar Base Specification 2023 rev. A states: "The withheld bit flag, as defined in LAS specification version 1.4–R15 (ASPRS, 2019), shall only be used to identify points that cannot be reasonably interpreted as valid surface returns. Examples include outliers, blunders, geometrically unreliable points, aerosol back-scatter, laser multi-path, airborne objects, and sensor anomalies. The withheld flag may be used in conjunction with other classification codes (low/high noise for example), but it should be used in all cases where the previously mentioned criteria are met. The usage of the LAS Withheld Bit Flag is of such importance that proof of performance is required. This proof shall be provided as

- Preferred: Maximum Surface Height Rasters as detailed in Appendix 1, or
- Other test or metadata as agreed to by the USGS in advance and documented in the project Task Order.

The proof of performance shall be derived from the lidar point cloud as delivered.  
The proof of performance shall be recreated upon any changes to the point cloud."

The purpose of this section is to list the presence and quantities of points flagged as Withheld for all lidar data files.

Total Withheld points (all classes, all files)	441086360
--	-----------

## DPH-14 Report on Point Classification

The USGS Lidar Base Specification 2023 rev. A states: "The minimum, required classification scheme for lidar data is found in table 5.

- All points that fall within the minimum classification scheme (table 5) and not flagged as withheld shall be properly classified.
- Additional classes may be used on specific projects.
- Accuracy of point classification into classes beyond the minimum scheme (table 5) will not be assessed by the USGS, as documented in metadata.
- Assessing and verifying accuracy of point classification into classes beyond the minimum scheme will be the responsibility of the partner requesting the additional classes.
- No points in the classified LAS deliverable may remain assigned to Class 0, unless these points are flagged as withheld.
- Points classified as water will only be checked when associated with a breakline.
- Classification codes shall not be used in lieu of the overlap bit flag to identify overlap points.
- Model key points, if calculated, shall be identified using the key point bit flag as defined in LAS specification version 1.4–R15 (ASPRS, 2019). Model key points may, in addition, be identified using class 8 at the discretion of the data producer."

**Table 5. Minimum light detection and ranging data classification scheme.**

Code	Description
1	Processed, but unclassified
2	Bare earth
7	Low noise
9	Water
17	Bridge deck
18	High noise
20	Ignored ground <i>(typically breakline proximity)</i>
21	Snow <i>(if present and identifiable)</i>
22	Temporal exclusion <i>(typically nonfavored data in intertidal zones)</i>

The purpose of this section is to report total numbers of points for each class within the LAS files.

# DPH-14 Report on Point Classification - Class Totals

The purpose of this section is to list the number of points in each classification so the user can determine if any points exist in unintended classes or contain incorrect bit flags.

Class	Total	MKP	WH	Overlap	Class	Total	MKP	WH	Overlap
0	00	00	00	00	64	00	00	00	00
1	75,563,940,619	00	00	00	65	00	00	00	00
2	27,821,396,340	00	00	00	66	00	00	00	00
3	00	00	00	00	67	00	00	00	00
4	00	00	00	00	68	00	00	00	00
5	00	00	00	00	69	00	00	00	00
6	00	00	00	00	70	00	00	00	00
7	109,983,410	00	109,983,410	00	71	00	00	00	00
8	00	00	00	00	72	00	00	00	00
9	898,408,302	00	00	00	73	00	00	00	00
10	00	00	00	00	74	00	00	00	00
11	00	00	00	00	75	00	00	00	00
12	00	00	00	00	76	00	00	00	00
13	00	00	00	00	77	00	00	00	00
14	00	00	00	00	78	00	00	00	00
15	00	00	00	00	79	00	00	00	00
16	00	00	00	00	80	00	00	00	00
17	271,373	00	00	00	81	00	00	00	00
18	331,102,950	00	331,102,950	00	82	00	00	00	00
19	00	00	00	00	83	00	00	00	00
20	4,758,226	00	00	00	84	00	00	00	00
21	00	00	00	00	85	00	00	00	00
22	00	00	00	00	86	00	00	00	00
23	00	00	00	00	87	00	00	00	00
24	00	00	00	00	88	00	00	00	00
25	00	00	00	00	89	00	00	00	00
26	00	00	00	00	90	00	00	00	00
27	00	00	00	00	91	00	00	00	00
28	00	00	00	00	92	00	00	00	00
29	00	00	00	00	93	00	00	00	00
30	00	00	00	00	94	00	00	00	00
31	00	00	00	00	95	00	00	00	00
32	00	00	00	00	96	00	00	00	00
33	00	00	00	00	97	00	00	00	00
34	00	00	00	00	98	00	00	00	00
35	00	00	00	00	99	00	00	00	00
36	00	00	00	00	100	00	00	00	00
37	00	00	00	00	101	00	00	00	00
38	00	00	00	00	102	00	00	00	00
39	00	00	00	00	103	00	00	00	00
40	00	00	00	00	104	00	00	00	00
41	00	00	00	00	105	00	00	00	00
42	00	00	00	00	106	00	00	00	00
43	00	00	00	00	107	00	00	00	00
44	00	00	00	00	108	00	00	00	00
45	00	00	00	00	109	00	00	00	00
46	00	00	00	00	110	00	00	00	00
47	00	00	00	00	111	00	00	00	00
48	00	00	00	00	112	00	00	00	00
49	00	00	00	00	113	00	00	00	00
50	00	00	00	00	114	00	00	00	00
51	00	00	00	00	115	00	00	00	00
52	00	00	00	00	116	00	00	00	00
53	00	00	00	00	117	00	00	00	00
54	00	00	00	00	118	00	00	00	00
55	00	00	00	00	119	00	00	00	00
56	00	00	00	00	120	00	00	00	00
57	00	00	00	00	121	00	00	00	00
58	00	00	00	00	122	00	00	00	00
59	00	00	00	00	123	00	00	00	00
60	00	00	00	00	124	00	00	00	00
61	00	00	00	00	125	00	00	00	00
62	00	00	00	00	126	00	00	00	00
63	00	00	00	00	127	00	00	00	00

**Bold** – point counts in 'Minimum classified point cloud classification scheme' (see table on previous page)

**###** – point counts in Classes beyond the minimum

**##** – disallowed point counts or bit flags per USGS spec

**#** – not all Class 0, Class 7, and Class 18 points flagged as Withheld

# DPH-14 Report on Point Classification - Continued

Class	Total	MKP	WH	Overlap	Class	Total	MKP	WH	Overlap
128	00	00	00	00	192	00	00	00	00
129	00	00	00	00	193	00	00	00	00
130	00	00	00	00	194	00	00	00	00
131	00	00	00	00	195	00	00	00	00
132	00	00	00	00	196	00	00	00	00
133	00	00	00	00	197	00	00	00	00
134	00	00	00	00	198	00	00	00	00
135	00	00	00	00	199	00	00	00	00
136	00	00	00	00	200	00	00	00	00
137	00	00	00	00	201	00	00	00	00
138	00	00	00	00	202	00	00	00	00
139	00	00	00	00	203	00	00	00	00
140	00	00	00	00	204	00	00	00	00
141	00	00	00	00	205	00	00	00	00
142	00	00	00	00	206	00	00	00	00
143	00	00	00	00	207	00	00	00	00
144	00	00	00	00	208	00	00	00	00
145	00	00	00	00	209	00	00	00	00
146	00	00	00	00	210	00	00	00	00
147	00	00	00	00	211	00	00	00	00
148	00	00	00	00	212	00	00	00	00
149	00	00	00	00	213	00	00	00	00
150	00	00	00	00	214	00	00	00	00
151	00	00	00	00	215	00	00	00	00
152	00	00	00	00	216	00	00	00	00
153	00	00	00	00	217	00	00	00	00
154	00	00	00	00	218	00	00	00	00
155	00	00	00	00	219	00	00	00	00
156	00	00	00	00	220	00	00	00	00
157	00	00	00	00	221	00	00	00	00
158	00	00	00	00	222	00	00	00	00
159	00	00	00	00	223	00	00	00	00
160	00	00	00	00	224	00	00	00	00
161	00	00	00	00	225	00	00	00	00
162	00	00	00	00	226	00	00	00	00
163	00	00	00	00	227	00	00	00	00
164	00	00	00	00	228	00	00	00	00
165	00	00	00	00	229	00	00	00	00
166	00	00	00	00	230	00	00	00	00
167	00	00	00	00	231	00	00	00	00
168	00	00	00	00	232	00	00	00	00
169	00	00	00	00	233	00	00	00	00
170	00	00	00	00	234	00	00	00	00
171	00	00	00	00	235	00	00	00	00
172	00	00	00	00	236	00	00	00	00
173	00	00	00	00	237	00	00	00	00
174	00	00	00	00	238	00	00	00	00
175	00	00	00	00	239	00	00	00	00
176	00	00	00	00	240	00	00	00	00
177	00	00	00	00	241	00	00	00	00
178	00	00	00	00	242	00	00	00	00
179	00	00	00	00	243	00	00	00	00
180	00	00	00	00	244	00	00	00	00
181	00	00	00	00	245	00	00	00	00
182	00	00	00	00	246	00	00	00	00
183	00	00	00	00	247	00	00	00	00
184	00	00	00	00	248	00	00	00	00
185	00	00	00	00	249	00	00	00	00
186	00	00	00	00	250	00	00	00	00
187	00	00	00	00	251	00	00	00	00
188	00	00	00	00	252	00	00	00	00
189	00	00	00	00	253	00	00	00	00
190	00	00	00	00	254	00	00	00	00
191	00	00	00	00	255	00	00	00	00

**Bold** – point counts in 'Minimum classified point cloud classification scheme' (see table on previous page)

**##** – point counts in Classes beyond the minimum

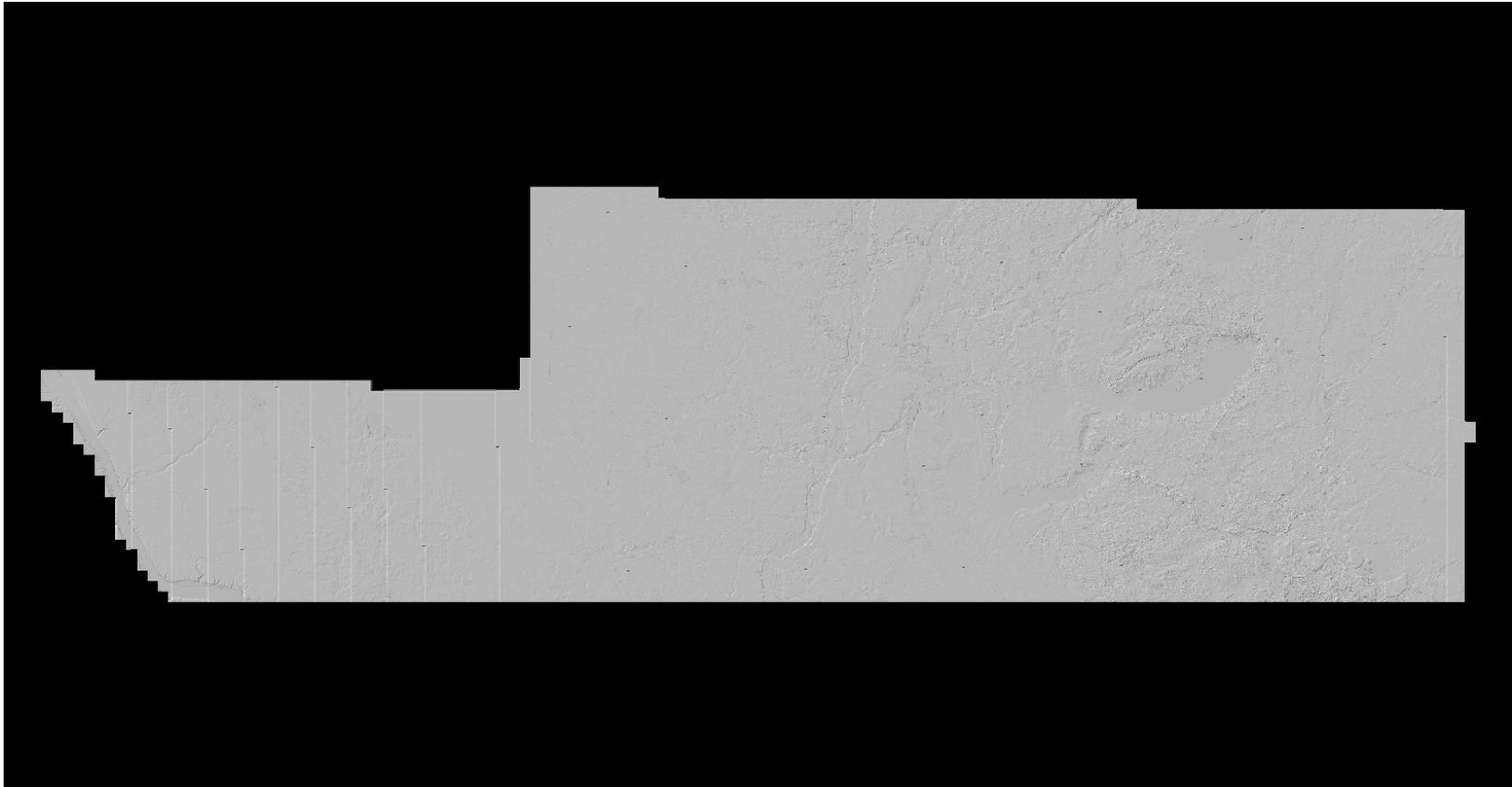
**##** – disallowed point counts or bit flags per USGS spec

**##** – not all Class 0, Class 7, and Class 18 points flagged as Withheld

## *DPH-15 Report on Classification Consistency*

The USGS Lidar Base Specification 2023 rev. A states: "Point classification is to be consistent across the entire project. Noticeable variations in the character, texture, or quality of the classification between tiles, swaths, lifts, or other non-natural divisions will be cause for rejection of the entire deliverable."

The purpose of this section is to show the bare earth surface hillshade product for classification consistency inspection. Any 'Exclusion Shapefile' pathed out on the Input Tab of this tool was applied to the processing for this test to avoid skewing the results with known areas of no data.



## DPH-16 Report on Tiles

The USGS Lidar Base Specification 2023 rev. A states: "A single nonoverlapping project tiling scheme will be established and agreed upon by the data producer and the USGS–NGP before collection.

- The tiling scheme will be used for all tiled deliverables.
- The tiling scheme shall be generated in and use the same coordinate reference system and units as the lidar point cloud and raster data in order to align orthogonally to the raster pixels.
- The tile size shall be an integer multiple of the cell size for raster deliverables.
- The tiles shall be indexed in x and y to an integer multiple of the x and y dimensions of the tile.
- The tiled deliverables shall edge-match seamlessly and without gaps.
- The tiled deliverables shall conform to the project tiling scheme without added overlap."

The purpose of this section is to report on the unallowed presence of overlap in the project tile scheme.

Units: Meter

The following lists tiles that are overlapped.

Tile	Approx. Width	Approx. Height	Overlap
NONE			