

Classified Point Cloud

Deliverable 1 Summary

✓ General		
Folder:	P:\Projects\34704_USGS_West_Central_Missouri\Deliveries\QA_from_USGS\For_Upload\MO_WestCentral_2_2018_QL1_WP_175530\WU_175527\point_cloud\tilecls	
Total # of Files:	2	(All Valid)
Total File Size:	1.7 GB	(1,823,710,346 bytes)

✓ Tile Sizes		
Median Tile Size:	1,500m x 1,500m	
Minimum Tile Size:	1,500m x 1,500m	
Maximum Tile Size:	1,500m x 1,500m	
X Range:	706500.01m to 745500.00m	
Y Range:	4300499.99m to 4304999.98m	
Elevation Range:	124.17m to 283.94m	

✓ LAS Version And Point Record Formats		
v1.4, Point Record Format 6		2 of 2 Tiles

✓ Spatial Reference System		
Horizontal Projection	NAD83(2011) / UTM zone 15N	2 of 2 Tiles
Horizontal Datum	NAD83 (National Spatial Reference System 2011)	2 of 2 Tiles
Horizontal Units	meter	2 of 2 Tiles
Vertical Datum	NAVD88 height - Geoid12B (m)	2 of 2 Tiles
Vertical Units	meter	2 of 2 Tiles
Vertical USGS-Compliant	Yes	2 of 2 Tiles
Geoid	Geoid12B	2 of 2 Tiles
Storage Method	WKT	2 of 2 Tiles
Matches OGC Template	Yes	2 of 2 Tiles

✓ GPS Time Type		
Adjusted		2 of 2 Tiles

✓ File Source ID Equals 0		
Yes		2 of 2 Tiles

✓ VLR/EVLR Reserved Equals 0		
Yes		6 of 6 Records

✓ Unnecessary Bytes At End Of File		
No		2 of 2 Tiles

✓ Legacy Point Count Check		
Zero		2 of 2 Tiles

✓ System Identifier		
Merge		2 of 2 Tiles

Classified Point Cloud Continued...

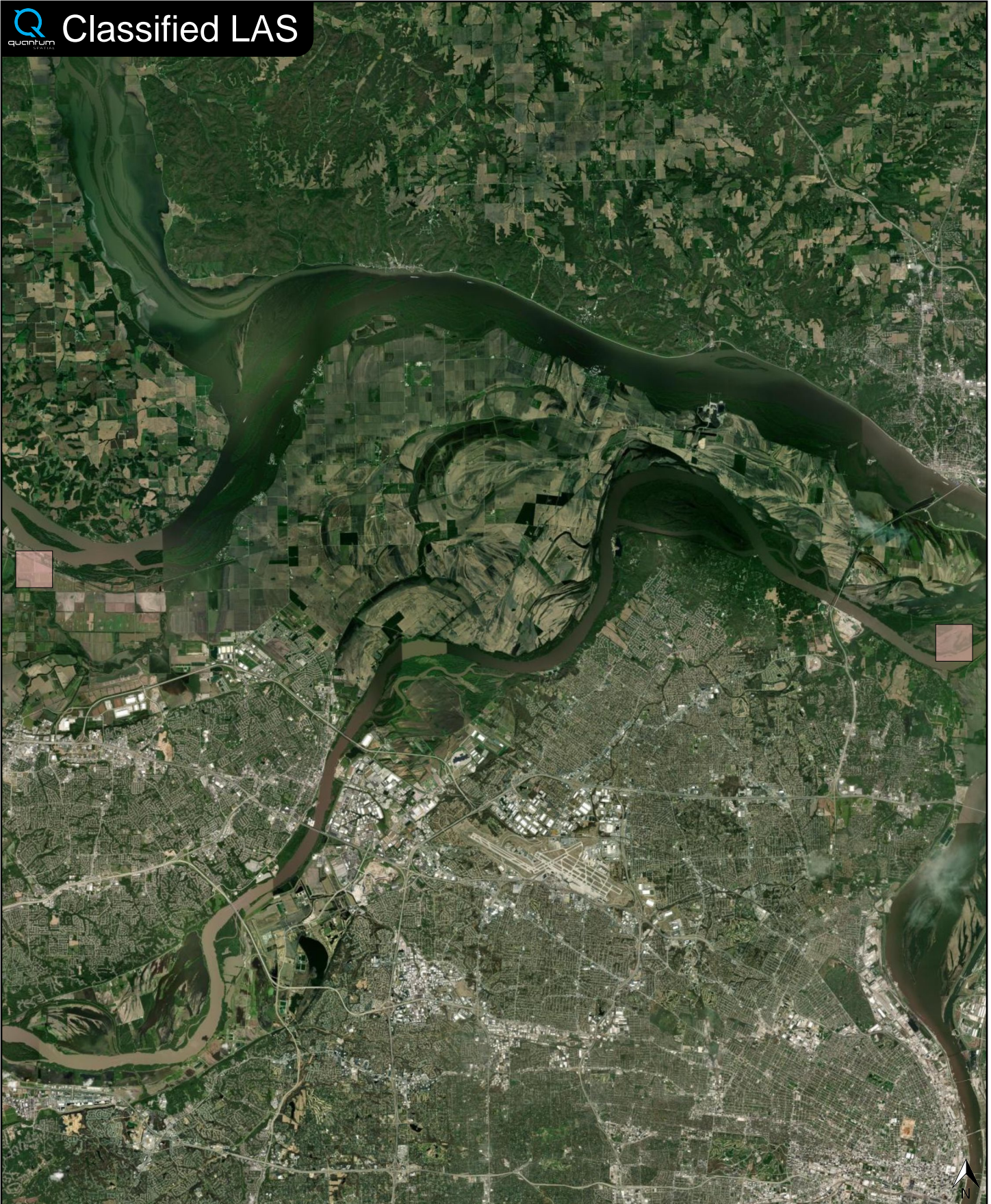
Deliverable 1 Summary

✓ Generating Software	
LiDAR Suite	2 of 2 Tiles

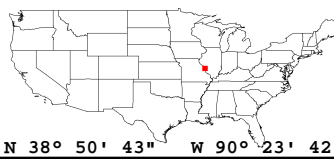
Point Classifications		
Class 1	18.67%	11,351,592 Points
Class 2	72.14%	43,853,027 Points
Class 7 + Withheld	0.00%	66 Points
Class 9	8.94%	5,433,119 Points
Class 17	0.00%	1,936 Points
Class 18 + Withheld	0.00%	474 Points
Class 20	0.25%	150,032 Points

✓ Point Statistics	
Scan Angle:	-29 to 29
Intensity:	17344 to 65535
Min/Max Number of Returns:	1 / 8
First Date:	2/19/2020 8:09:38 PM
Last Date:	2/19/2020 8:41:21 PM

✓ User Data / v1.4 Scanner Channel		
	User Data	v1.4 Scanner Channel
0	0	0
1	30,224,224	30,224,224
2	30,566,022	30,566,022
>= 3	0	0



Classified LAS Tiles (2)



✓ General		
Folder:	P:\Projects\34704_USGS_West_Central_Missouri\Deliveries\QA_from_USGS\For_Upload\MO_WestCentral_2_2018_QL1_WP_175530\WU_175527\bare_earth\be_rasters	
Total # of Files:	2	(All Valid)
Total File Size:	69.1 MB	(72,423,032 bytes)

✓ Tile Sizes	
Median Tile Size:	1,500m x 1,500m
Minimum Tile Size:	1,500m x 1,500m
Maximum Tile Size:	1,500m x 1,500m
X Range:	706500.00m to 745500.00m
Y Range:	4300500.00m to 4305000.00m
Header Elevation Range:	UNKNOWN

✓ Spatial Reference System		
Horizontal Projection	NAD83(2011) / UTM zone 15N	2 of 2 Tiles
Horizontal Datum	NAD83 (National Spatial Reference System 2011)	2 of 2 Tiles
Horizontal Units	meter	2 of 2 Tiles
Vertical Datum	NAVD88 height - Geoid12B (m)	2 of 2 Tiles
Vertical Units	meter	2 of 2 Tiles
Vertical USGS-Compliant	Yes	2 of 2 Tiles
Geoid	Geoid12B	2 of 2 Tiles
Matches OGC Template	Yes	2 of 2 Tiles

✓ Raster		
File Type:	TIF	2 of 2
Bands:	1	2 of 2
Grid Size (pixels):	3000 x 3000	2 of 2
Pixel Resolution:	0.50000000m x 0.50000000m	2 of 2
Pixel Type:	32-bit	2 of 2
Compression:	None	2 of 2
No Data Value:	-999999	2 of 2

