

Classified Point Cloud

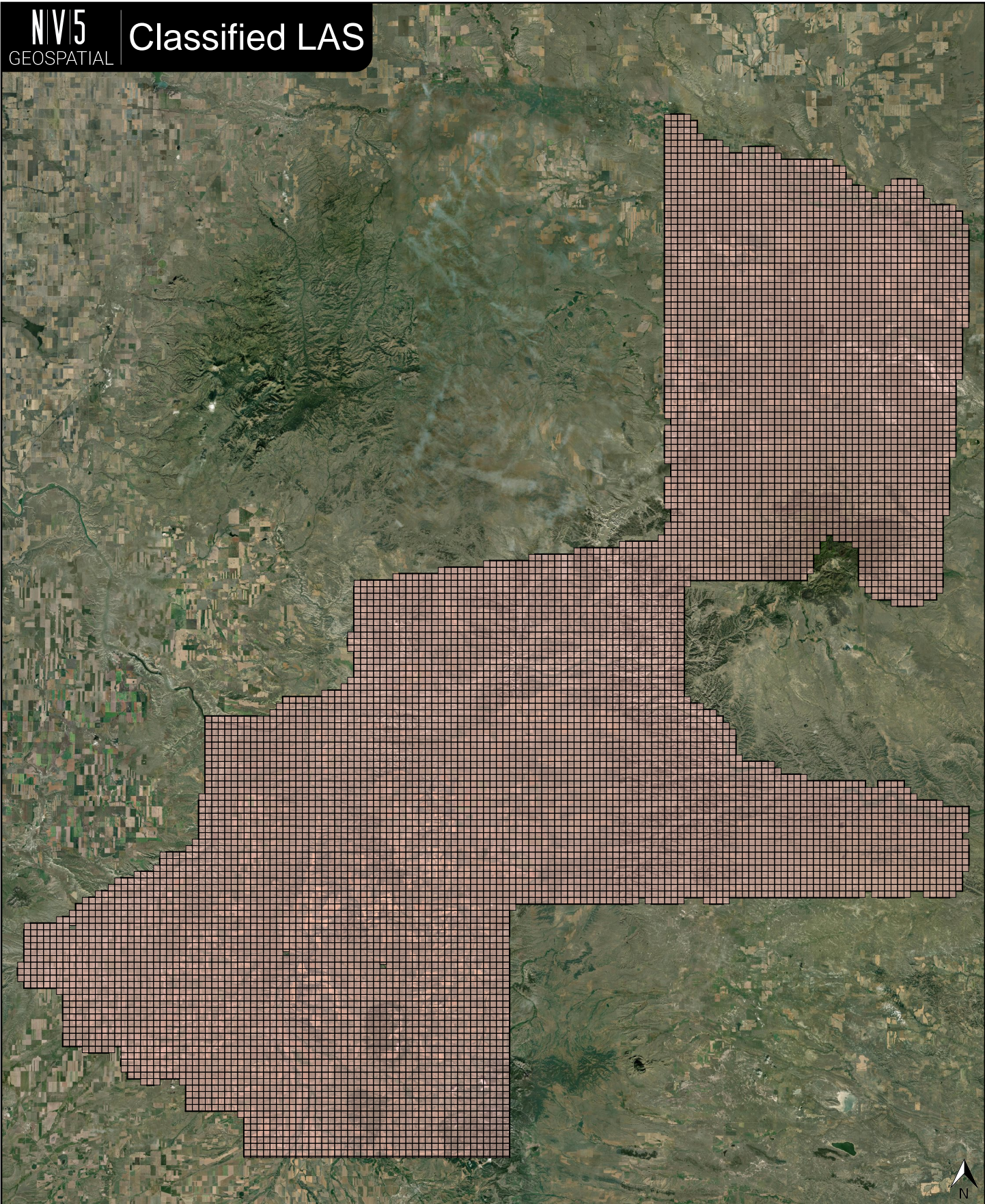
Deliverable 1 Summary

✓ General		
Folder:	E:\197114\MT_Statewide_P2_3_2020\point_cloud\tilecls	
Total # of Files:	10,380 (All Valid)	
Total File Size:	1.2 TB (1,283,206,084,010 bytes)	
✓ Tile Sizes / Coordinate Ranges		
Median Tile Size:	1,000m x 1,000m	
Minimum Tile Size:	100m x 98m	
Maximum Tile Size:	1,000m x 1,000m	
X Range:	543900.01m to 691100.00m	
Y Range:	317800.00m to 479100.00m	
Elevation Range (All Classes):	-49.70m to 2616.76m	
✓ LAS Version And Point Record Formats		
v1.4, Point Record Format 6	10,380 of 10,380 Tiles	
✓ Spatial Reference System		
Horizontal Projection	NAD83(2011) / Montana	10,380 of 10,380 Tiles
Valid OGC Name	Yes	10,380 of 10,380 Tiles
Horizontal Datum	NAD83 (National Spatial Reference System 2011)	10,380 of 10,380 Tiles
Horizontal Units	meter	10,380 of 10,380 Tiles
Vertical Datum	NAVD88 height - Geoid18 (m)	10,380 of 10,380 Tiles
Vertical Units	meter	10,380 of 10,380 Tiles
Vertical USGS-Compliant	Yes	10,380 of 10,380 Tiles
Geoid	Geoid18	10,380 of 10,380 Tiles
Storage Method	WKT	10,380 of 10,380 Tiles
Matches OGC Template	Yes	10,380 of 10,380 Tiles
✓ GPS Time Type		
Adjusted	10,380 of 10,380 Tiles	
✓ File Source ID Equals 0		
Yes	10,380 of 10,380 Tiles	
✓ VLR/EVLR Reserved Equals 0		
Yes	51,709 of 51,709 Records	
✓ Unnecessary Bytes At End Of File		
No	10,380 of 10,380 Tiles	
✓ Legacy Point Count Check		
Zero	10,380 of 10,380 Tiles	
✓ System Identifier		
MERGE	10,380 of 10,380 Tiles	

Classified Point Cloud Continued...

Deliverable 1 Summary

✓ Generating Software	
QSI LiDAR Suite	10,380 of 10,380 Tiles
✓ Scale Factors	
0.01, 0.01, 0.01	10,380 of 10,380 Tiles



Classified LAS Tiles (10,380)



N 47° 52' 29" W 109° 15' 43"

5 10 15 20 mi

8 16 24 32 km

Scale 1:2,835

1 in = 12.6 mi

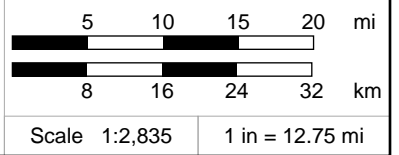
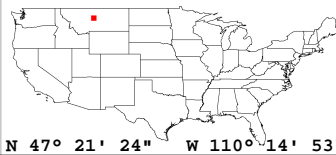
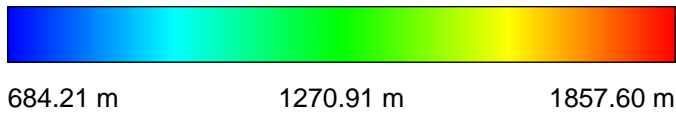
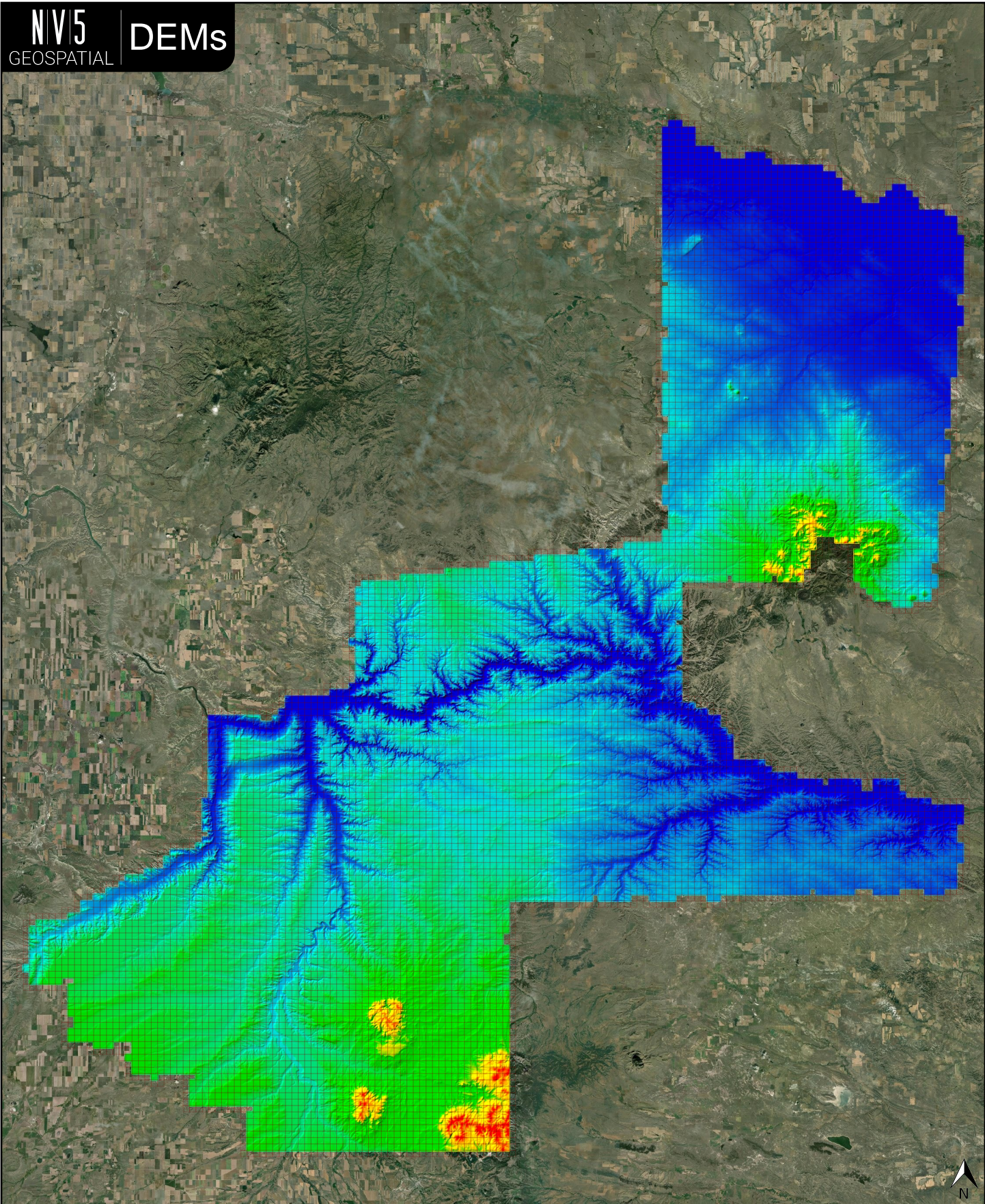


✓ General	
Folder:	E:\197114\MT_Statewide_P2_3_2020\bare_earth\be_rasters
Total # of Files:	10,380 (All Valid)
Total File Size:	40.6 GB (43,575,759,000 bytes)

✓ Tile Sizes / Coordinate Ranges	
Median Tile Size:	1,000m x 1,000m
Minimum Tile Size:	1,000m x 1,000m
Maximum Tile Size:	1,000m x 1,000m
X Range:	543000.00m to 692000.00m
Y Range:	317000.00m to 480000.00m

✓ Spatial Reference System		
Horizontal Projection	NAD83(2011) / Montana	10,380 of 10,380 Tiles
Valid OGC Name	Yes	10,380 of 10,380 Tiles
Horizontal Datum	NAD83 (National Spatial Reference System 2011)	10,380 of 10,380 Tiles
Horizontal Units	meter	10,380 of 10,380 Tiles
Vertical Datum	NAVD88 height - Geoid18 (m)	10,380 of 10,380 Tiles
Vertical Units	meter	10,380 of 10,380 Tiles
Vertical USGS-Compliant	Yes	10,380 of 10,380 Tiles
GDAL 2.x Compatible	Yes	10,380 of 10,380 Tiles
Geoid	Geoid18	10,380 of 10,380 Tiles
Matches OGC Template	Yes	10,380 of 10,380 Tiles
GTCitationGeoKey (1026)	NAD83(2011) / Montana + NAVD88 height - Geoid18 (m)	10,380 of 10,380 Tiles
VerticalCitationGeoKey (4097)	NAVD88 height - Geoid18 (m)	10,380 of 10,380 Tiles

✓ Raster		
File Type:	TIF	10,380 of 10,380
Bands:	1	10,380 of 10,380
Grid Size (pixels):	1000 x 1000	10,380 of 10,380
Pixel Resolution:	1.00000000m x 1.00000000m	10,380 of 10,380
Pixel Type:	32-bit	10,380 of 10,380
Compression:	None	10,380 of 10,380
No Data Value:	-999999	10,380 of 10,380

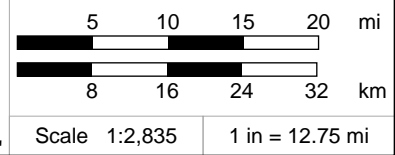
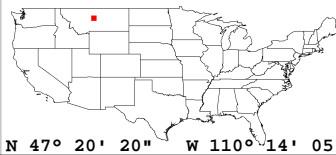
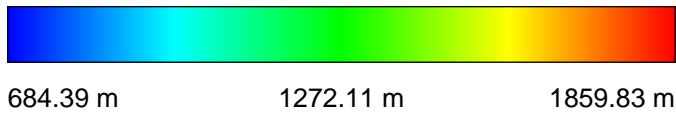
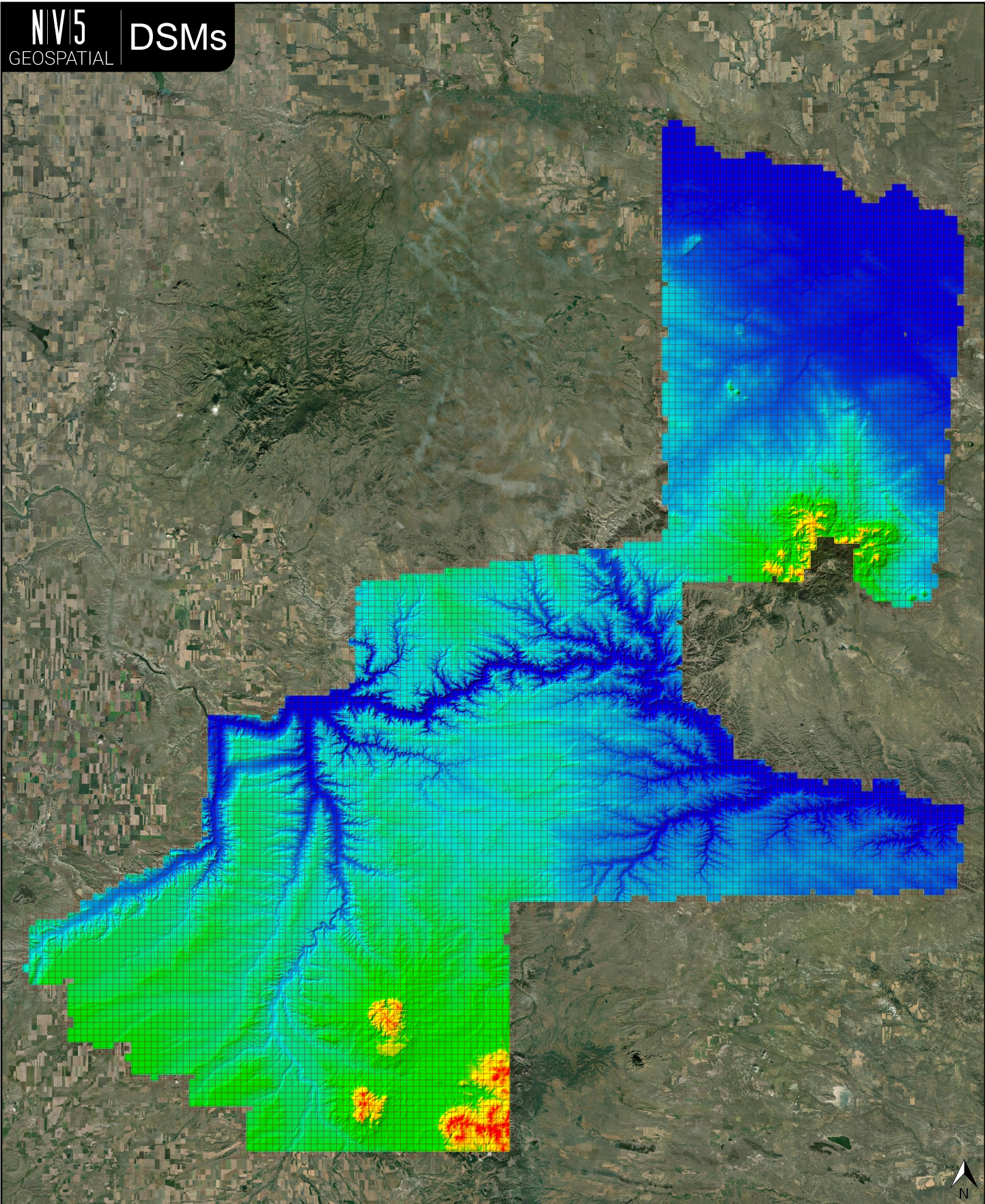


✓ General	
Folder:	E:\197114\MT_Statewide_P2_3_2020\metadata\spatial_metadata\contractor_provided\maximum_surface_height_raster
Total # of Files:	10,380 (All Valid)
Total File Size:	40.6 GB (43,575,759,000 bytes)

✓ Tile Sizes / Coordinate Ranges	
Median Tile Size:	1,000m x 1,000m
Minimum Tile Size:	1,000m x 1,000m
Maximum Tile Size:	1,000m x 1,000m
X Range:	543000.00m to 692000.00m
Y Range:	317000.00m to 480000.00m

✓ Spatial Reference System		
Horizontal Projection	NAD83(2011) / Montana	10,380 of 10,380 Tiles
Valid OGC Name	Yes	10,380 of 10,380 Tiles
Horizontal Datum	NAD83 (National Spatial Reference System 2011)	10,380 of 10,380 Tiles
Horizontal Units	meter	10,380 of 10,380 Tiles
Vertical Datum	NAVD88 height - Geoid18 (m)	10,380 of 10,380 Tiles
Vertical Units	meter	10,380 of 10,380 Tiles
Vertical USGS-Compliant	Yes	10,380 of 10,380 Tiles
GDAL 2.x Compatible	Yes	10,380 of 10,380 Tiles
Geoid	Geoid18	10,380 of 10,380 Tiles
Matches OGC Template	Yes	10,380 of 10,380 Tiles
GTCitationGeoKey (1026)	NAD83(2011) / Montana + NAVD88 height - Geoid18 (m)	10,380 of 10,380 Tiles
VerticalCitationGeoKey (4097)	NAVD88 height - Geoid18 (m)	10,380 of 10,380 Tiles

✓ Raster		
File Type:	TIF	10,380 of 10,380
Bands:	1	10,380 of 10,380
Grid Size (pixels):	1000 x 1000	10,380 of 10,380
Pixel Resolution:	1.000000000m x 1.000000000m	10,380 of 10,380
Pixel Type:	32-bit	10,380 of 10,380
Compression:	None	10,380 of 10,380
No Data Value:	-999999	10,380 of 10,380

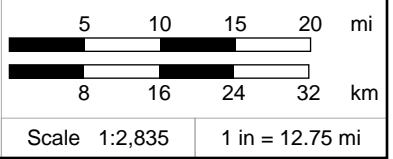
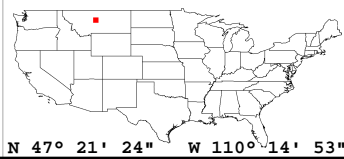
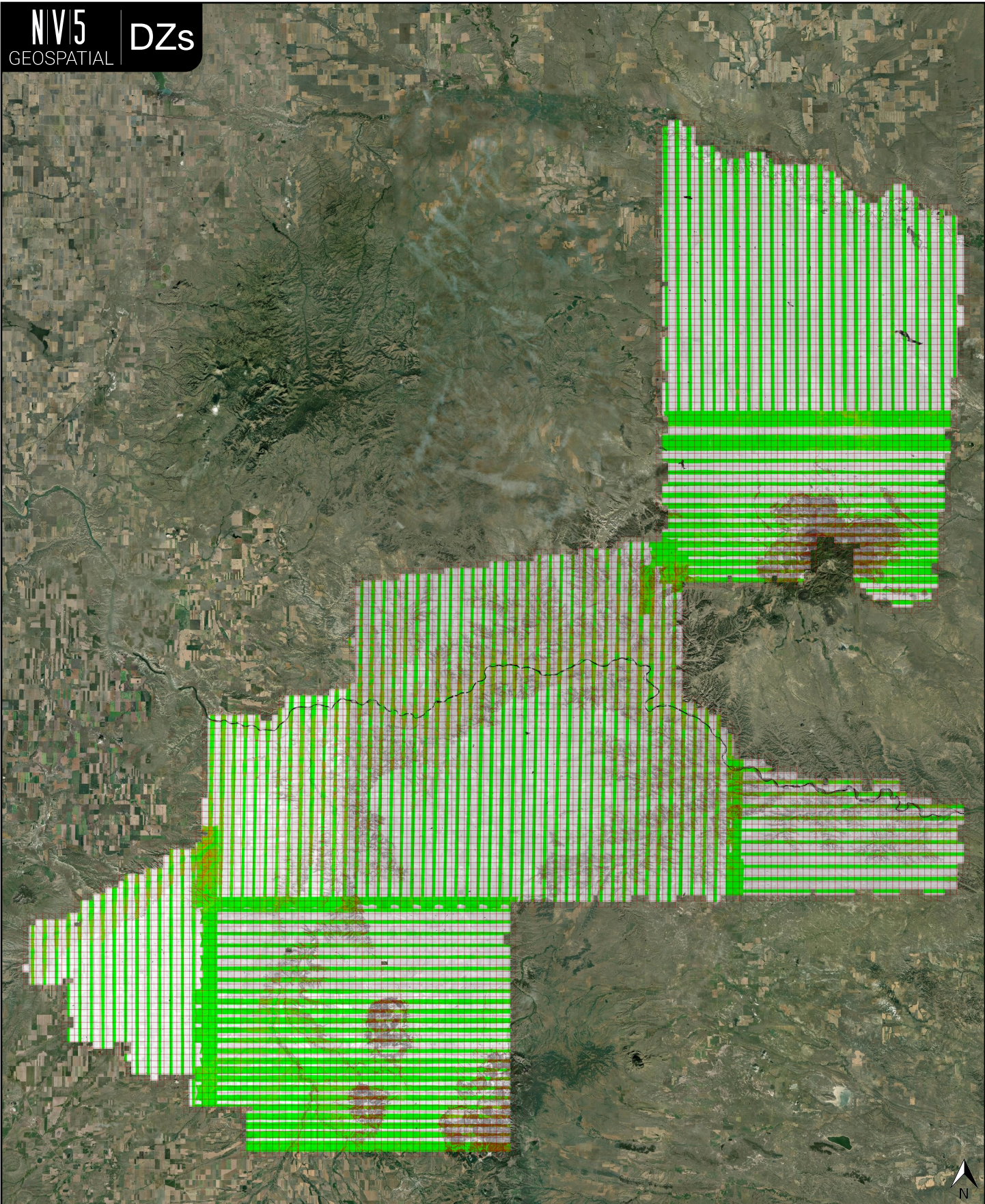


✓ General	
Folder:	E:\197114\MT_Statewide_P2_3_2020\metadata\spatial_metadata\contractor_provided\swath_separation_images
Total # of Files:	10,380 (All Valid)
Total File Size:	30.4 GB (32,687,813,700 bytes)

✓ Tile Sizes / Coordinate Ranges	
Median Tile Size:	1,000m x 1,000m
Minimum Tile Size:	1,000m x 1,000m
Maximum Tile Size:	1,000m x 1,000m
X Range:	543000.00m to 692000.00m
Y Range:	317000.00m to 480000.00m

✓ Spatial Reference System		
Horizontal Projection	NAD83(2011) / Montana	10,380 of 10,380 Tiles
Horizontal Datum	NAD83 (National Spatial Reference System 2011)	10,380 of 10,380 Tiles
Horizontal Units	meter	10,380 of 10,380 Tiles
Vertical Datum	NONE	10,380 of 10,380 Tiles
Vertical Units	NONE	10,380 of 10,380 Tiles
Geoid	NONE	10,380 of 10,380 Tiles

✓ Raster		
File Type:	TIF	10,380 of 10,380
Bands:	3	10,380 of 10,380
Grid Size (pixels):	1000 x 1000	10,380 of 10,380
Pixel Resolution:	1.000000000m x 1.000000000m	10,380 of 10,380
Pixel Type:	8-bit (RGB)	10,380 of 10,380
Compression:	NONE	10,380 of 10,380
No Data Value:	0	10,380 of 10,380

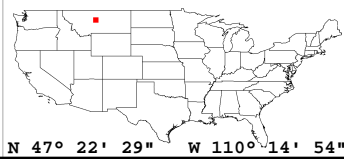


✓ General	
Folder:	E:\197114\MT_Statewide_P2_3_2020\other\intensity_images
Total # of Files:	10,380 (All Valid)
Total File Size:	10.2 GB (10,919,438,220 bytes)

✓ Tile Sizes / Coordinate Ranges	
Median Tile Size:	1,000m x 1,000m
Minimum Tile Size:	1,000m x 1,000m
Maximum Tile Size:	1,000m x 1,000m
X Range:	543000.00m to 692000.00m
Y Range:	317000.00m to 480000.00m

✓ Spatial Reference System		
Horizontal Projection	NAD83(2011) / Montana	10,380 of 10,380 Tiles
Horizontal Datum	NAD83 (National Spatial Reference System 2011)	10,380 of 10,380 Tiles
Horizontal Units	meter	10,380 of 10,380 Tiles
Vertical Datum	NONE	10,380 of 10,380 Tiles
Vertical Units	NONE	10,380 of 10,380 Tiles
Geoid	NONE	10,380 of 10,380 Tiles

✓ Raster		
File Type:	TIF	10,380 of 10,380
Bands:	1	10,380 of 10,380
Grid Size (pixels):	1000 x 1000	10,380 of 10,380
Pixel Resolution:	1.00000000m x 1.00000000m	10,380 of 10,380
Pixel Type:	8-bit Unsigned Integer (MINISBLACK)	10,380 of 10,380
Compression:	NONE	10,380 of 10,380
No Data Value:	0	10,380 of 10,380



N 47° 22' 29" W 110° 14' 54"

