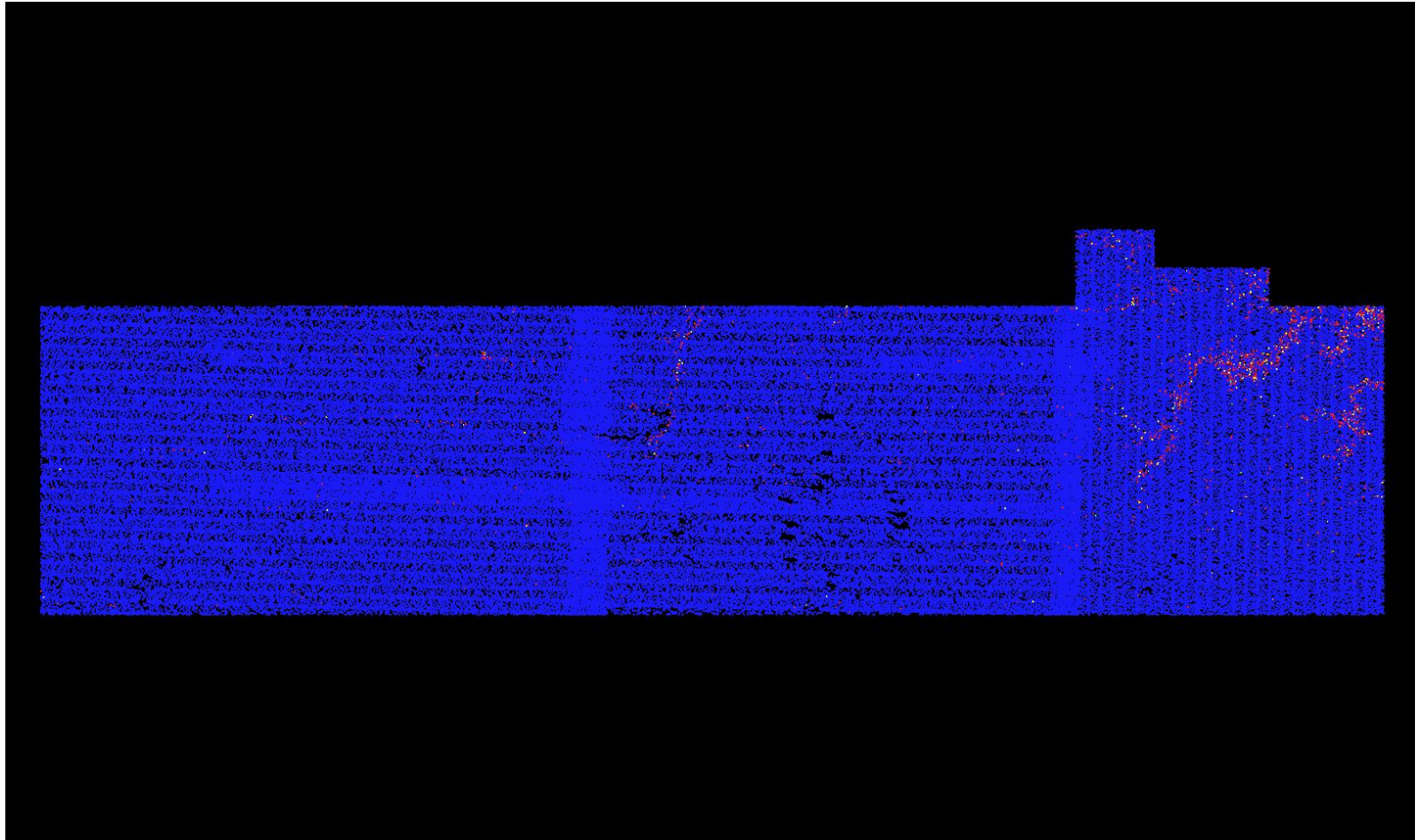


C-2 Report on Multiple Discrete Returns - All Returns

The purpose of this section is to show a graphic of lidar data points colored by all returns. Blank flight lines can indicate a collection or processing problem dealing with lidar return attribute information.

[Data Source - D:\00_Cherry\Swaths_LAS](#)

[Result Path - D:\00_Cherry\NE_CherryBrownCuster_North_Block_OC\C_2\ColorByReturns.jpg](#)



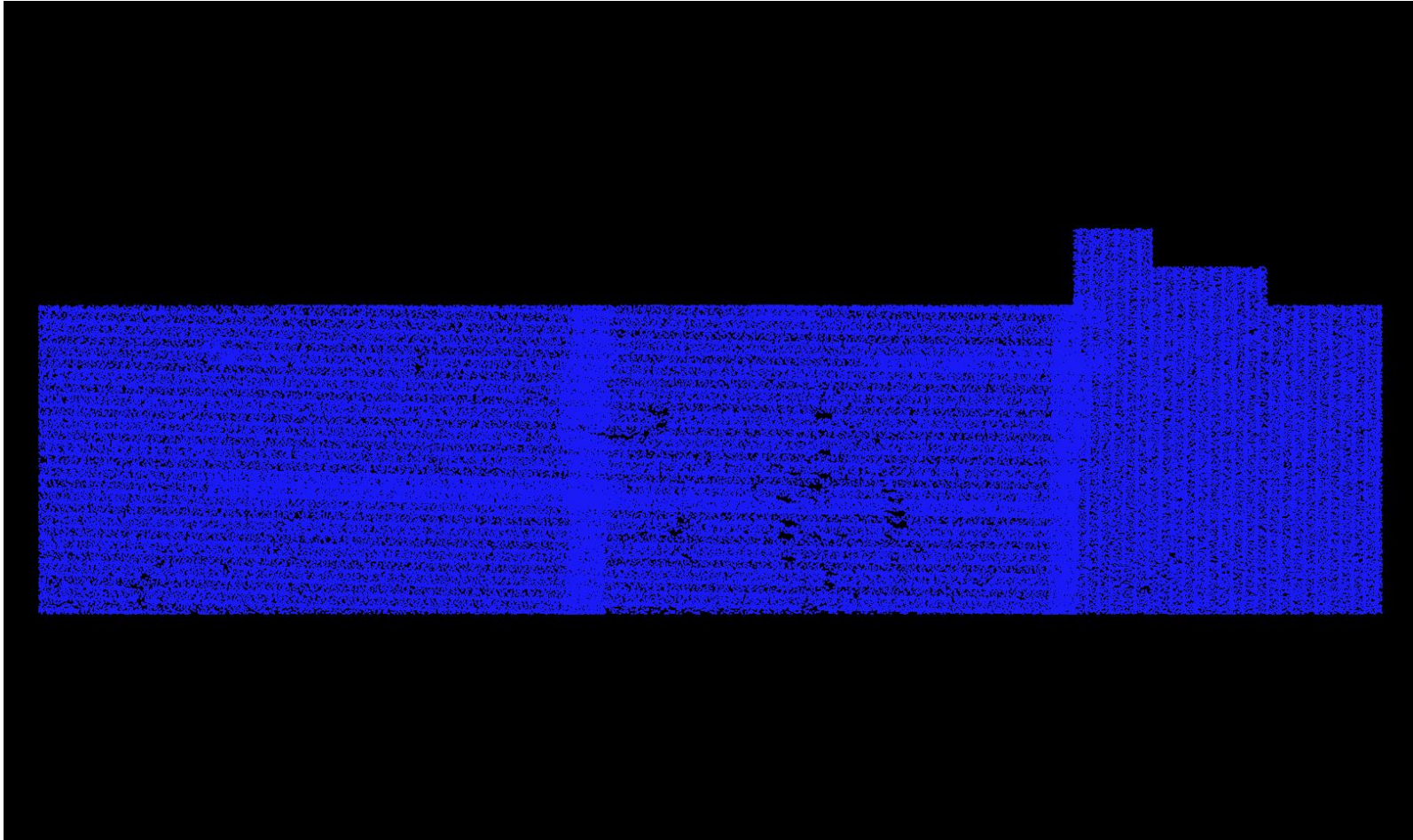
First Second Third Fourth or other

C-2 Report on Multiple Discrete Returns - First Returns

The purpose of this section is to show a graphic of lidar data points colored by first returns. Blank flight lines can indicate a collection or processing problem dealing with lidar return attribute information.

[Data Source - D:\00_Cherry\Swaths_LAS](#)

[Result Path - D:\00_Cherry\NE_CherryBrownCuster_North_Block_QC\C_2\ColorByReturns_FirstReturns.jpg](#)

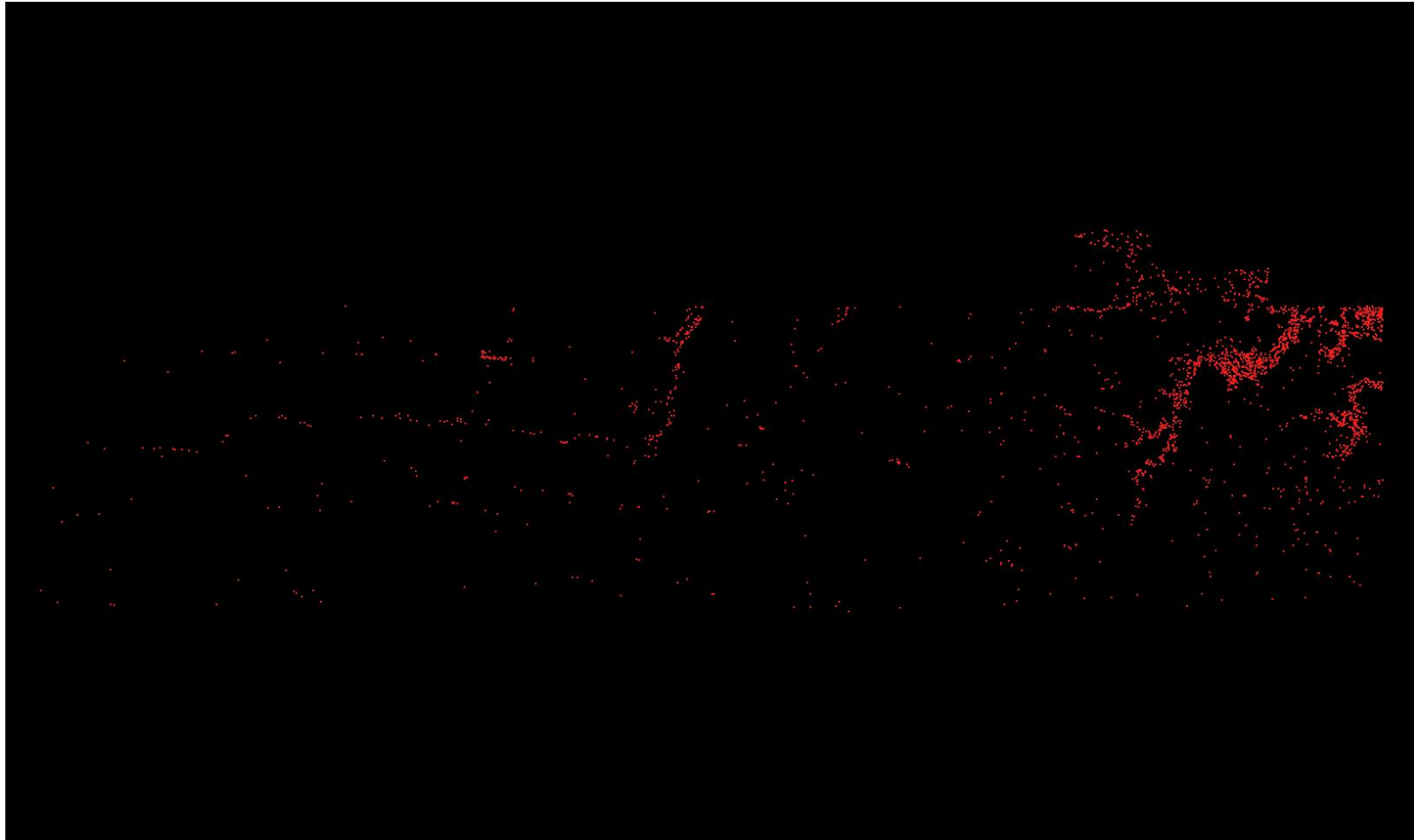


C-2 Report on Multiple Discrete Returns - Second Returns

The purpose of this section is to show a graphic of lidar data points colored by second returns. Blank flight lines can indicate a collection or processing problem dealing with lidar return attribute information.

[Data Source - D:\00_Cherry\Swaths_LAS](#)

[Result Path - D:\00_Cherry\NE_CherryBrownCuster_North_Block_QC\C_2\ColorByReturns_SecondReturns.jpg](#)



C-2 Report on Multiple Discrete Returns - Third Returns

The purpose of this section is to show a graphic of lidar data points colored by third returns. Blank flight lines can indicate a collection or processing problem dealing with lidar return attribute information.

[Data Source - D:\00_Cherry\Swaths_LAS](#)

[Result Path - D:\00_Cherry\NE_CherryBrownCuster_North_Block_QC\C_2\ColorByReturns_ThirdReturns.jpg](#)



C-2 Report on Multiple Discrete Returns - Other Returns

The purpose of this section is to show a graphic of lidar data points colored by fourth or other returns. Blank flight lines can indicate a collection or processing problem dealing with lidar return attribute information.

[Data Source - D:\00_Cherry\Swaths_LAS](#)

[Result Path - D:\00_Cherry\NE_CherryBrownCuster_North_Block_QC\C_2\ColorByReturns_OtherReturns.jpg](#)

