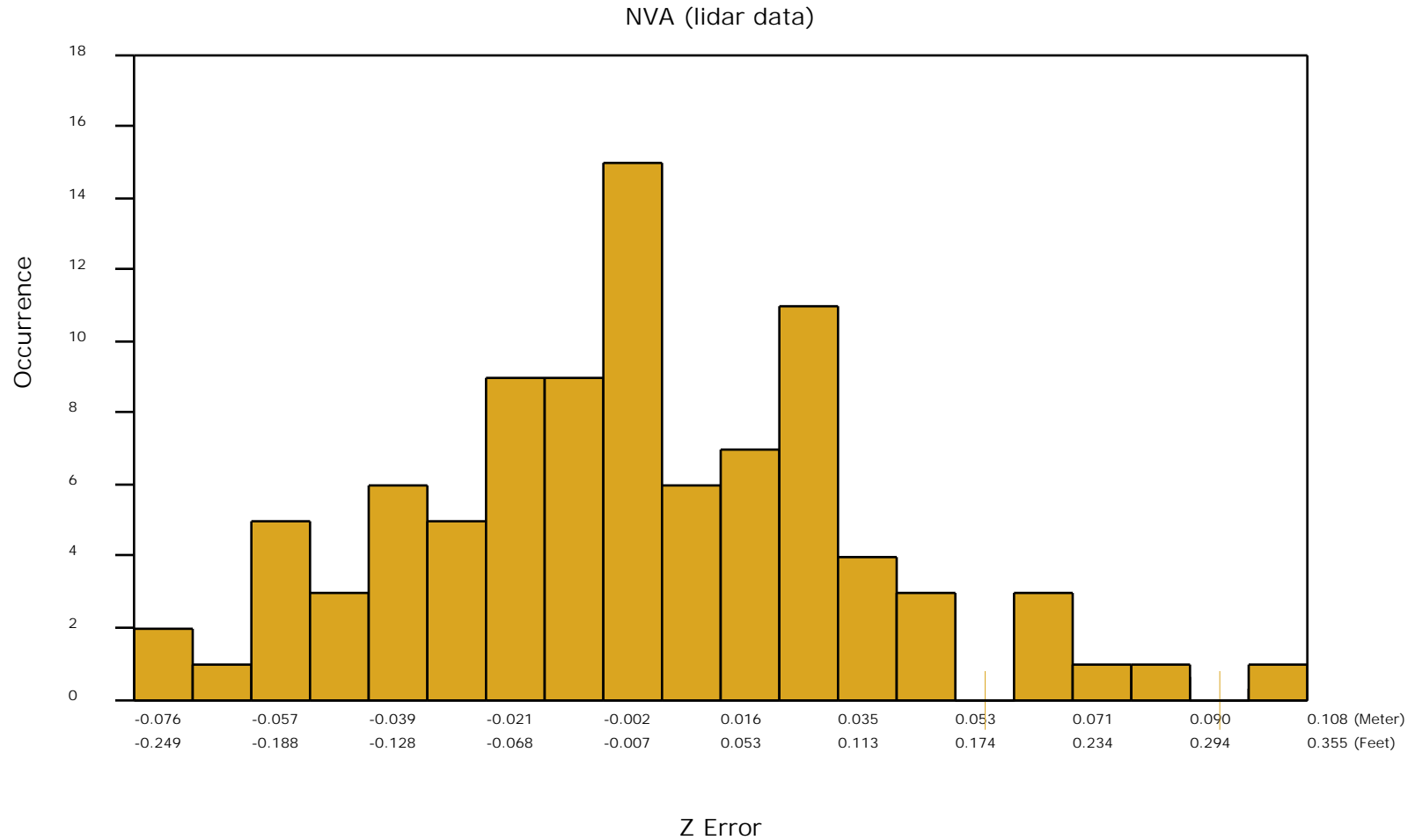


DPH-11 Report on Absolute Vertical Accuracy - continued

The purpose of this section is to show a frequency distribution chart of the non-vegetated vertical accuracy (NVA) of the lidar point cloud data measured against surveyed ground check points.

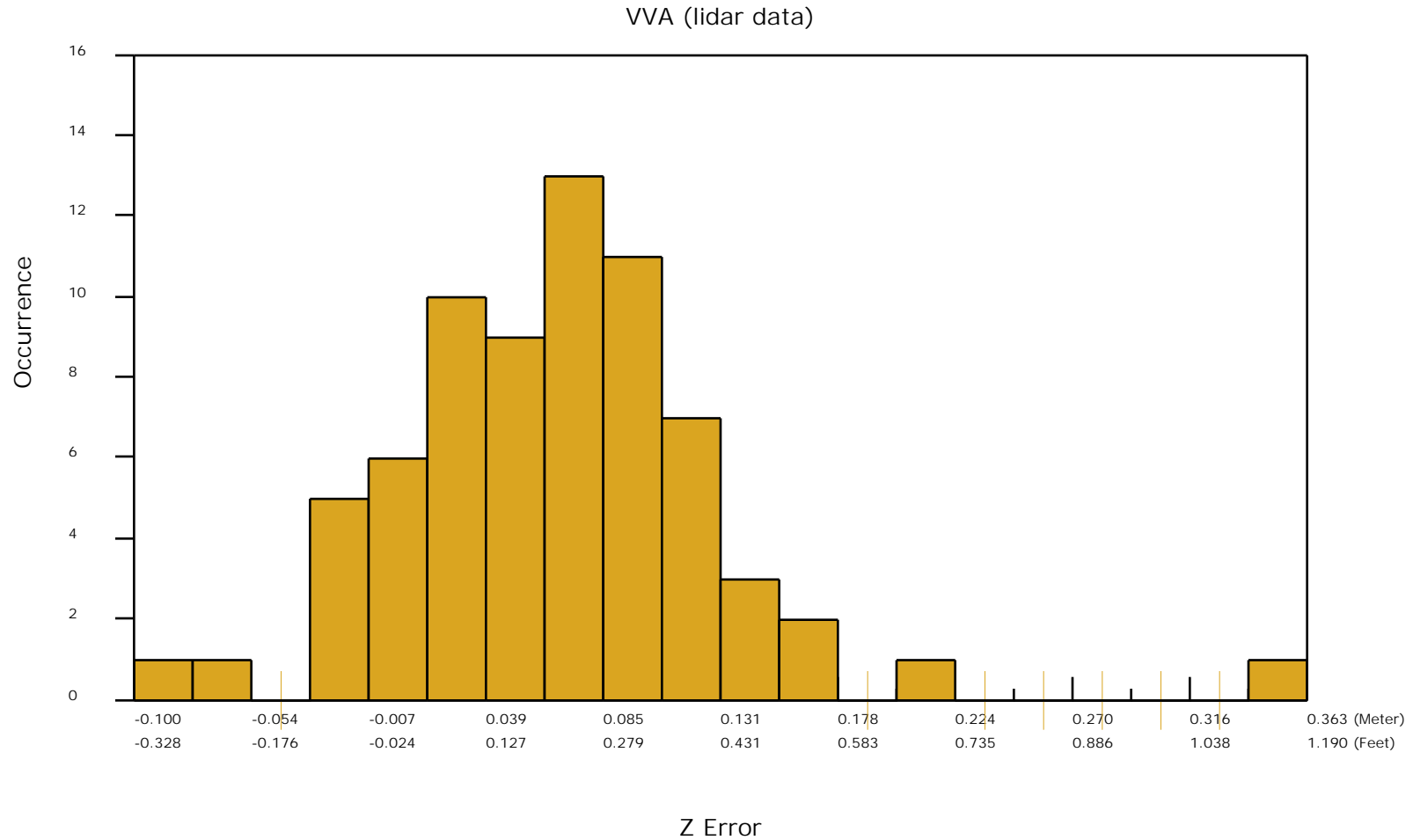
[Data Source - D:\00_Cherry\Client_LAS](#)



DPH-11 Report on Absolute Vertical Accuracy - continued

The purpose of this section is to show a frequency distribution chart of the vegetated vertical accuracy (VVA) of the lidar point cloud data measured against surveyed ground check points.

[Data Source - D:\00_Cherry\Client_LAS](#)



DPH-11 Report on Absolute Vertical Accuracy - continued

The purpose of this section is to report the results of measuring the DEM data against surveyed ground NVA (nonvegetated vertical accuracy) check points. All XY coordinates and Z values reported are in the selected data units.

NVA (DEM)

ID	X	Y	Coverage	Z	Z From Lidar	Z Error	Description	Comments
3012	277902.437	4733075.58	Yes	1039.104	1039.172	0.068		
3013	353312.558	4733752.726	Yes	871.674	871.664	-0.010		
3014	265296.363	4708767.477	Yes	1115.704	1115.665	-0.039		
3015	322324.626	4709912.486	Yes	974.734	974.771	0.037		
3016	373765.923	4708916.705	Yes	885.286	885.319	0.033		
3017	289853.553	4706282.302	Yes	1052.007	1052.008	0.001		
3018	362506.736	4714642.934	Yes	896.948	896.961	0.013		
3019	430060.166	4722481.115	Yes	749.075	749.090	0.015		
3020	401285.381	4719915.024	Yes	814.056	814.020	-0.036		
3021	310030.384	4704224.316	Yes	1014.535	1014.551	0.016		
3022	374191.203	4730094.796	Yes	862.41	862.425	0.015		
3023	364409.645	4723326.038	Yes	877.283	877.257	-0.026		
3024	407932.336	4706519.567	Yes	812.368	812.357	-0.011		
3025	397185.294	4707498.177	Yes	834.274	834.274	0.000		
3026	324099.377	4699975.405	Yes	975.86	975.874	0.014		
3027	388466.684	4709337.033	Yes	854.11	854.044	-0.066		
3028	427797.08	4695806.842	Yes	814.175	814.136	-0.039		
3028A	427890.688	4697522.933	Yes	805.349	805.348	-0.001		
3029	333731.923	4726392.127	Yes	915.79	915.806	0.016		
3030	409597.475	4713593.206	Yes	782.494	782.430	-0.064		
3031	277120.566	4715678.412	Yes	1079.069	1079.104	0.035		
3032	298210.479	4734635.058	Yes	974.354	974.426	0.072		
3033	428400.376	4704755.278	Yes	781.723	781.665	-0.058		
3034	415431.769	4699596.545	Yes	822.926	822.918	-0.008		
3035	344439.591	4709953.402	Yes	930.291	930.320	0.029		
3036	314918.231	4724080.024	Yes	974.049	974.059	0.010		
3037	277412.548	4707273.009	Yes	1085.15	1085.157	0.007		
3037A	277619.702	4708191.411	Yes	1077.495	1077.519	0.024		
3038	310142.888	4715440.141	Yes	988.77	988.780	0.010		
3039	268858.526	4705737.835	Yes	1111.016	1110.971	-0.045		

Check Points Vertical Accuracy - continued

ID	X	Y	Coverage	Z	Z From Lidar	Z Error	Description	Comments
3040	285742.329	4729547.213	Yes	1028.648	1028.655	0.007		
3041	358294.156	4710568.355	Yes	909.709	909.669	-0.040		
3042	354208.971	4695103.234	Yes	914.645	914.692	0.047		
3043	430886.272	4733386.971	Yes	670.171	670.171	0.000		
3044	313188.017	4720751.914	Yes	954.466	954.487	0.021		
3045	344944.971	4717477.47	Yes	905.645	905.666	0.021		
3046	437980.525	4711918.669	Yes	738.913	738.874	-0.039		
3047	327691.045	4704486.483	Yes	968.724	968.712	-0.012		
3048	424202.516	4716045.801	Yes	772.903	772.886	-0.017		
3049	287053.602	4730149.518	Yes	1022.51	1022.542	0.032		
3050	419784.486	4737862.583	Yes	659.051	659.051	0.000		
3051	338762.303	4702824.707	Yes	950.701	950.724	0.023		
3052	277366.769	4724664.01	Yes	1071.336	1071.364	0.028		
3053	373353.455	4696342.474	Yes	889.701	889.702	0.001		
3054	336231.804	4711008.205	Yes	933.556	933.547	-0.009		
3055	376720.47	4695636.171	Yes	884.84	884.834	-0.006		
3056	360866.222	4725156.572	Yes	876.683	876.686	0.003		
3056A	359768.095	4721677.042	Yes	884.339	884.349	0.010		
3057	389927.47	4718822.439	Yes	840.049	840.043	-0.006		
3058	402690.108	4743905.644	Yes	678.909	678.851	-0.058		
3059	318425.096	4727961.58	Yes	942.224	942.204	-0.020		
3060	391101.686	4726886.678	Yes	827.774	827.753	-0.021		
3061	412679.664	4727892.368	Yes	759.33	759.325	-0.005		
3061A	412447.52	4726282.969	Yes	776.515	776.490	-0.025		
3062	433253.22	4699875.791	Yes	784.214	784.136	-0.078		
3063	283472.262	4707126.051	Yes	1069.178	1069.158	-0.020		
3063A	281284.882	4707320.036	Yes	1071.966	1071.963	-0.003		
3064	374251.478	4733423.996	Yes	852.632	852.712	0.080		
3065	348919.151	4726497.469	Yes	877.754	877.751	-0.003		
3065A	349140.677	4728230.649	Yes	877.394	877.391	-0.003		
3066	369540.832	4723411.887	Yes	882.56	882.551	-0.009		
3066A	367565.1	4723461.826	Yes	875.16	875.193	0.033		
3067	395428.903	4723130.561	Yes	821.838	821.893	0.055		
3068	277670.944	4720644.166	Yes	1067.721	1067.680	-0.041		
3069	391709.683	4701221.379	Yes	862.614	862.578	-0.036		

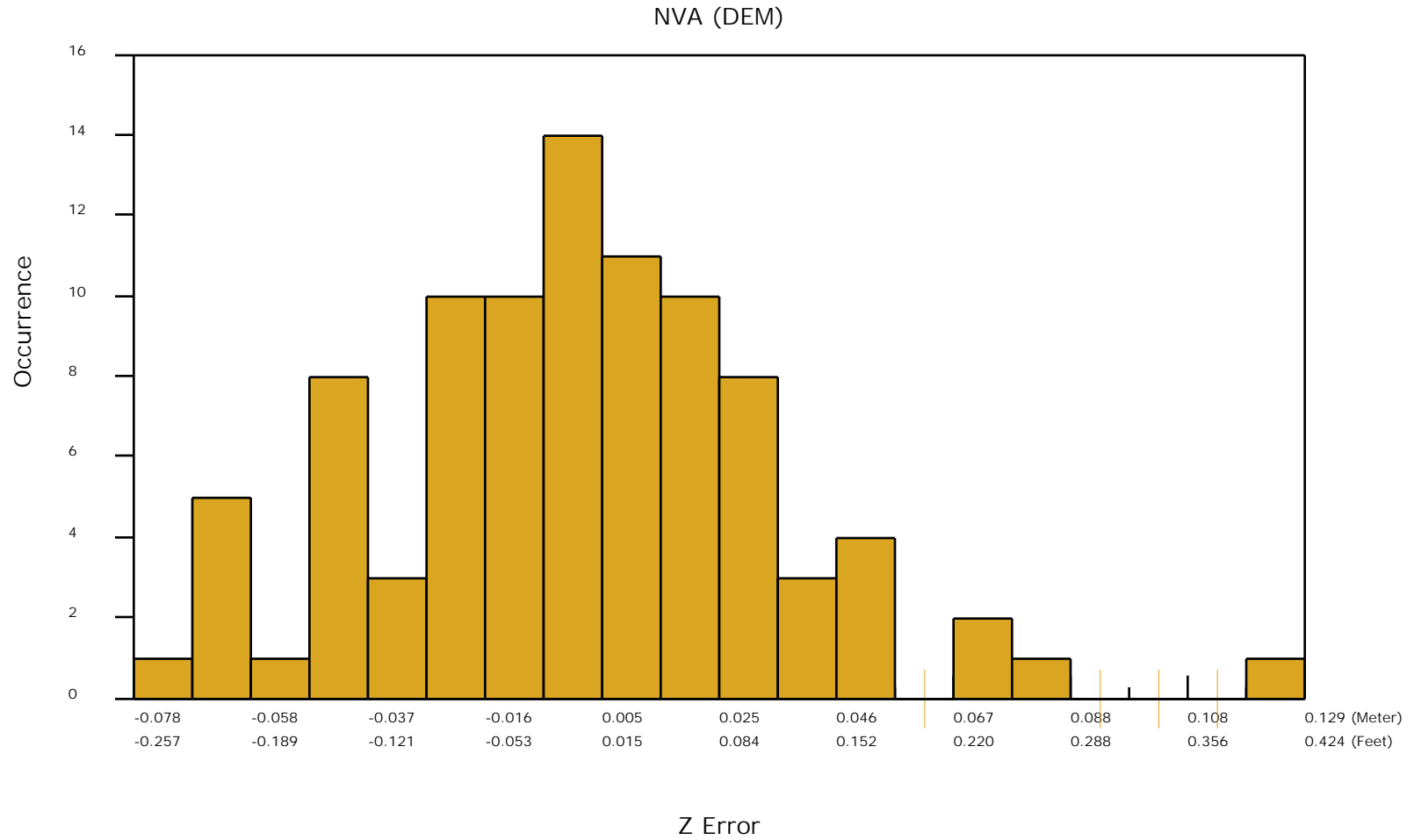
Check Points Vertical Accuracy - continued

ID	X	Y	Coverage	Z	Z From Lidar	Z Error	Description	Comments
3070	422011.671	4721918.748	Yes	773.818	773.800	-0.018		
3071	417627.403	4712465.813	Yes	787.383	787.363	-0.020		
3071A	417224.585	4712455.898	Yes	788.177	788.150	-0.027		
3072	308584.008	4730832.357	Yes	955.976	956.021	0.045		
3073	350162.599	4699890.912	Yes	926.596	926.590	-0.006		
3074	402616.347	4722153.951	Yes	805.569	805.555	-0.014		
3075	288972.323	4697272.059	Yes	1070.931	1070.949	0.018		
3076	274941.948	4696638.987	Yes	1113.213	1113.216	0.003		
3077	400188.821	4695803.303	Yes	852.625	852.576	-0.049		
3078	313524.951	4695204.286	Yes	1012.819	1012.857	0.038		
3078A	316256.055	4700483.495	Yes	999.972	1000.020	0.048		
3079	277434.713	4712310.979	Yes	1081.655	1081.709	0.054		
3080	332873.49	4695977.756	Yes	943.996	944.012	0.016		
3080A	332900.72	4696188.787	Yes	943.432	943.462	0.030		
3081	326662.371	4734199.712	Yes	914.199	914.182	-0.017		
3082	412497.881	4732893.934	Yes	743.687	743.686	-0.001		
3082A	412458.629	4732172.173	Yes	750.802	750.811	0.009		
3083	372987.606	4701765.213	Yes	894.585	894.565	-0.020		
3084	299924.683	4695768.543	Yes	1047.094	1047.107	0.013		
3084A	304774.453	4694919.217	Yes	1035.044	1035.077	0.033		
3085	265189.127	4696016.228	Yes	1166.494	1166.505	0.011		
3086	373739.235	4717063.571	Yes	881.623	881.752	0.129		
3087	439235.269	4732650.341	Yes	633.242	633.200	-0.042		
3088	383851.194	4734338.763	Yes	836.641	836.655	0.014		
3089	390034.728	4711516.144	Yes	845.372	845.327	-0.045		
3090	393196.759	4719653.044	Yes	831.322	831.309	-0.013		
3091	430018.735	4714399.371	Yes	751.939	751.878	-0.061		

DPH-11 Report on Absolute Vertical Accuracy - continued

The purpose of this section is to show a frequency distribution chart of the non-vegetated vertical accuracy (NVA) of the DEM data measured against surveyed ground check points.

[Data Source - D:\00_Cherry\Client_LAS](#)



DPH-11 Report on Absolute Vertical Accuracy - continued

The purpose of this section is to report the results of measuring the DEM data against surveyed ground VVA (vegetated vertical accuracy) check points. All XY coordinates and Z values reported are in the selected data units.

VVA (DEM)

ID	X	Y	Coverage	Z	Z From Lidar	Z Error	Description	Comments
2010	277575.781	4731878.371	Yes	1043.194	1043.260	0.066		
2011	353196.169	4733833.226	Yes	869.018	868.995	-0.023		
2013	322672.579	4710274.329	Yes	970.513	970.499	-0.014		
2014	373797.238	4708929.016	Yes	885.463	885.600	0.137		
2014A	373634.504	4717134.307	Yes	877.749	877.871	0.122		
2015	289048.854	4706290.505	Yes	1054.406	1054.442	0.036		
2016	361797.943	4714755.959	Yes	893.402	893.477	0.075		
2017	430087.601	4723471.189	Yes	750.662	750.680	0.018		
2018	402408.309	4719245.432	Yes	810.024	810.135	0.111		
2019	310217.934	4704566.239	Yes	1013.006	1012.945	-0.061		
2020	365428.533	4723433.073	Yes	885.592	885.653	0.061		
2021	408311.134	4706515.693	Yes	812.016	812.125	0.109		
2022	397570.597	4706716.38	Yes	835.22	835.305	0.085		
2023	324082.27	4699994.92	Yes	976.249	976.325	0.076		
2024	388388.396	4708838.712	Yes	853.178	853.254	0.076		
2025	427829.544	4696041.444	Yes	811.631	811.725	0.094		
2026	332402.993	4727407.666	Yes	914.487	914.518	0.031		
2027	409520.881	4713630.195	Yes	777.285	777.271	-0.014		
2028	277099.523	4715705.894	Yes	1077.788	1077.883	0.095		
2029	298224.943	4734609.933	Yes	974.026	974.047	0.021		
2029A	304022.08	4731385.927	Yes	963.544	963.578	0.034		
2030	428944.925	4704735.147	Yes	780.507	780.720	0.213		
2031	415375.766	4699490.874	Yes	822.553	822.644	0.091		
2032	344667.465	4709948.922	Yes	929.187	929.380	0.193		
2033	277256.136	4706292.704	Yes	1086.375	1086.499	0.124		
2033A	277425.741	4712288.026	Yes	1080.683	1080.785	0.102		
2034	309707.451	4715305.219	Yes	991.377	991.391	0.014		
2035	268592.796	4705937.19	Yes	1111.098	1111.221	0.123		
2036	358295.532	4710542.349	Yes	910.728	910.726	-0.002		
2037	353993.582	4695132.249	Yes	914.037	914.061	0.024		

Check Points Vertical Accuracy - continued

ID	X	Y	Coverage	Z	Z From Lidar	Z Error	Description	Comments
2038	430741.31	4733542.987	Yes	649.109	649.144	0.035		
2038A	430399.428	4733689.09	Yes	619.283	619.174	-0.109		
2039	344900.171	4717643.718	Yes	906.496	906.497	0.001		
2040	437978.954	4710063.008	Yes	738.393	738.306	-0.087		
2041	327412.906	4703572.584	Yes	969.035	969.067	0.032		
2042	425230.649	4715852.234	Yes	772.734	772.672	-0.062		
2043	285207.445	4729472.456	Yes	1031.252	1031.293	0.041		
2044	419806.983	4737514.089	Yes	652.905	652.943	0.038		
2045	337523.711	4700567.298	Yes	947.879	948.006	0.127		
2045A	334399.238	4699596.917	Yes	955.199	955.240	0.041		
2046	277415.931	4723697.085	Yes	1084.751	1084.830	0.079		
2047	338755.043	4709944.914	Yes	934.661	934.721	0.060		
2048	375211.534	4695574.79	Yes	886.802	886.813	0.011		
2049	360892.604	4725131.644	Yes	876.685	876.762	0.077		
2049A	359912.085	4722138.301	Yes	882.874	882.942	0.068		
2050	389847.917	4718769.258	Yes	840.224	840.362	0.138		
2051	402680.687	4743886.734	Yes	678.508	678.524	0.016		
2052	317326.65	4728158.627	Yes	943.043	943.071	0.028		
2053	391221.228	4726652.201	Yes	826.602	826.679	0.077		
2054	412635.74	4727256.564	Yes	757.308	757.423	0.115		
2054A	412425.095	4726446.367	Yes	772.312	772.280	-0.032		
2055	433151.891	4699895.959	Yes	783.918	784.018	0.100		
2056	374240.827	4733466.767	Yes	852.903	853.042	0.139		
2057	348687.926	4725752.469	Yes	877.987	878.079	0.092		
2057A	348916.715	4726518.846	Yes	876.174	876.245	0.071		
2058	370239.199	4723457.265	Yes	874.265	874.338	0.073		
2059	396024.165	4722851.445	Yes	819.845	820.228	0.383		
2060	277694.015	4720212.689	Yes	1066.862	1066.892	0.030		
2061	391646.593	4701295	Yes	861.65	861.700	0.050		
2062	308408.198	4730923.275	Yes	954.54	954.637	0.097		
2063	289857.124	4695196.208	Yes	1077.306	1077.392	0.086		
2063A	304766.451	4694933.042	Yes	1033.695	1033.748	0.053		
2064	400251.791	4696154.958	Yes	848.653	848.726	0.073		
2065	312785.382	4695240.833	Yes	1013.667	1013.801	0.134		
2065A	316252.631	4700476.335	Yes	1000.984	1001.132	0.148		

Check Points Vertical Accuracy - continued

ID	X	Y	Coverage	Z	Z From Lidar	Z Error	Description	Comments
2066	326666.618	4733408.621	Yes	908.541	908.529	-0.012		
2067	265204.171	4696028.817	Yes	1166.704	1166.787	0.083		
2067A	265230.576	4696791.756	Yes	1136.058	1136.082	0.024		
2068	438995.546	4733831.692	Yes	667.443	667.525	0.082		
2069	384211.86	4734194.314	Yes	836.633	836.708	0.075		

DPH-11 Report on Absolute Vertical Accuracy - continued

The purpose of this section is to show a frequency distribution chart of the vegetated vertical accuracy (VVA) of the DEM data measured against surveyed ground check points.

[Data Source - D:\00_Cherry\Client_LAS](#)

