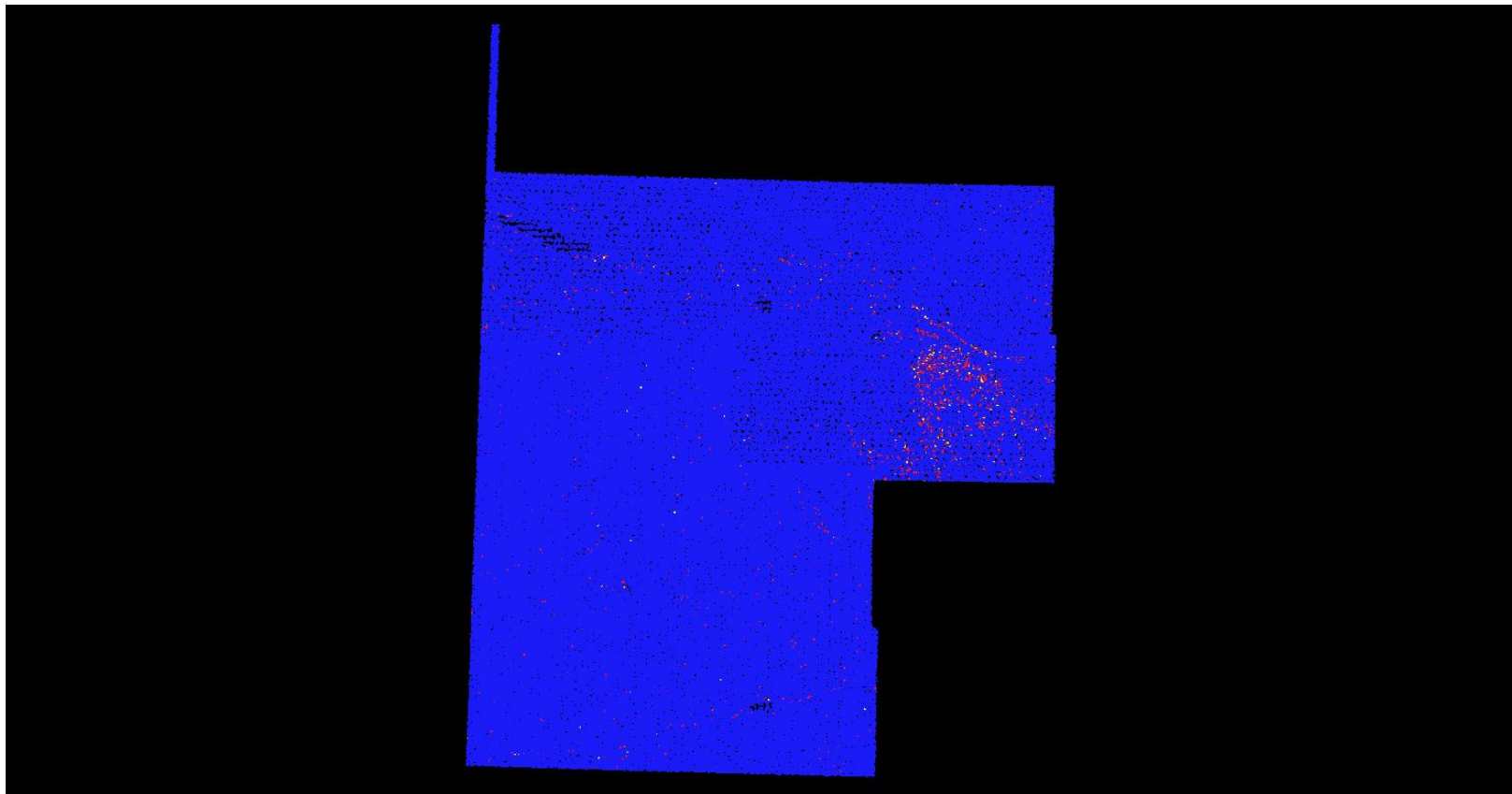


C-2 Report on Multiple Discrete Returns - All Returns

The purpose of this section is to show a graphic of lidar data points colored by all returns. Blank flight lines can indicate a collection or processing problem dealing with lidar return attribute information.

[Data Source - Y:\Mapping\Projects\65220751_NE_Southwest\Production\Final_Client_Deliverables\Projectwide\UTM14\point_cloud\Swaths](Y:\Mapping\Projects\65220751_NE_Southwest\Production\Final_Client_Deliverables\Projectwide\UTM14\point_cloud\Swaths)

[Result Path - Y:\Mapping\Projects\65220751_NE_Southwest\Admin\OA_QC\NE_Southwest_UTM14_QC\C_2\ColorByReturns.jpg](Y:\Mapping\Projects\65220751_NE_Southwest\Admin\OA_QC\NE_Southwest_UTM14_QC\C_2\ColorByReturns.jpg)



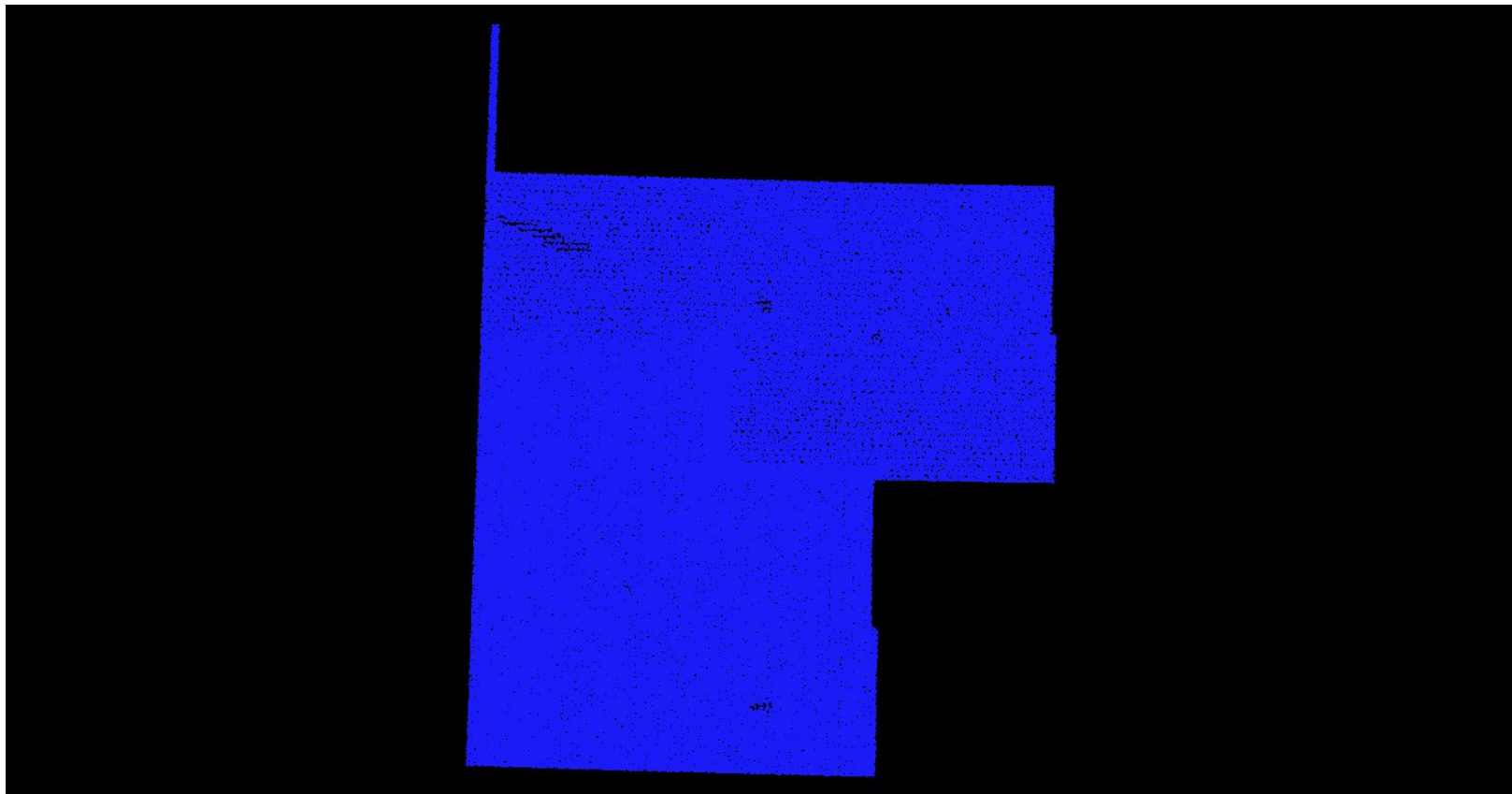
First Second Third Fourth or other

C-2 Report on Multiple Discrete Returns - First Returns

The purpose of this section is to show a graphic of lidar data points colored by first returns. Blank flight lines can indicate a collection or processing problem dealing with lidar return attribute information.

[Data Source - Y:\Mapping\Projects\65220751_NE_Southwest\Production\Final_Client_Deliverables\Projectwide\UTM14\point_cloud\Swaths](Y:\Mapping\Projects\65220751_NE_Southwest\Production\Final_Client_Deliverables\Projectwide\UTM14\point_cloud\Swaths)

[Result Path - Y:\Mapping\Projects\65220751_NE_Southwest\Admin\OA_OC\NE_Southwest_UTM14_OC\C_2\ColorByReturns_FirstReturns.jpg](Y:\Mapping\Projects\65220751_NE_Southwest\Admin\OA_OC\NE_Southwest_UTM14_OC\C_2\ColorByReturns_FirstReturns.jpg)

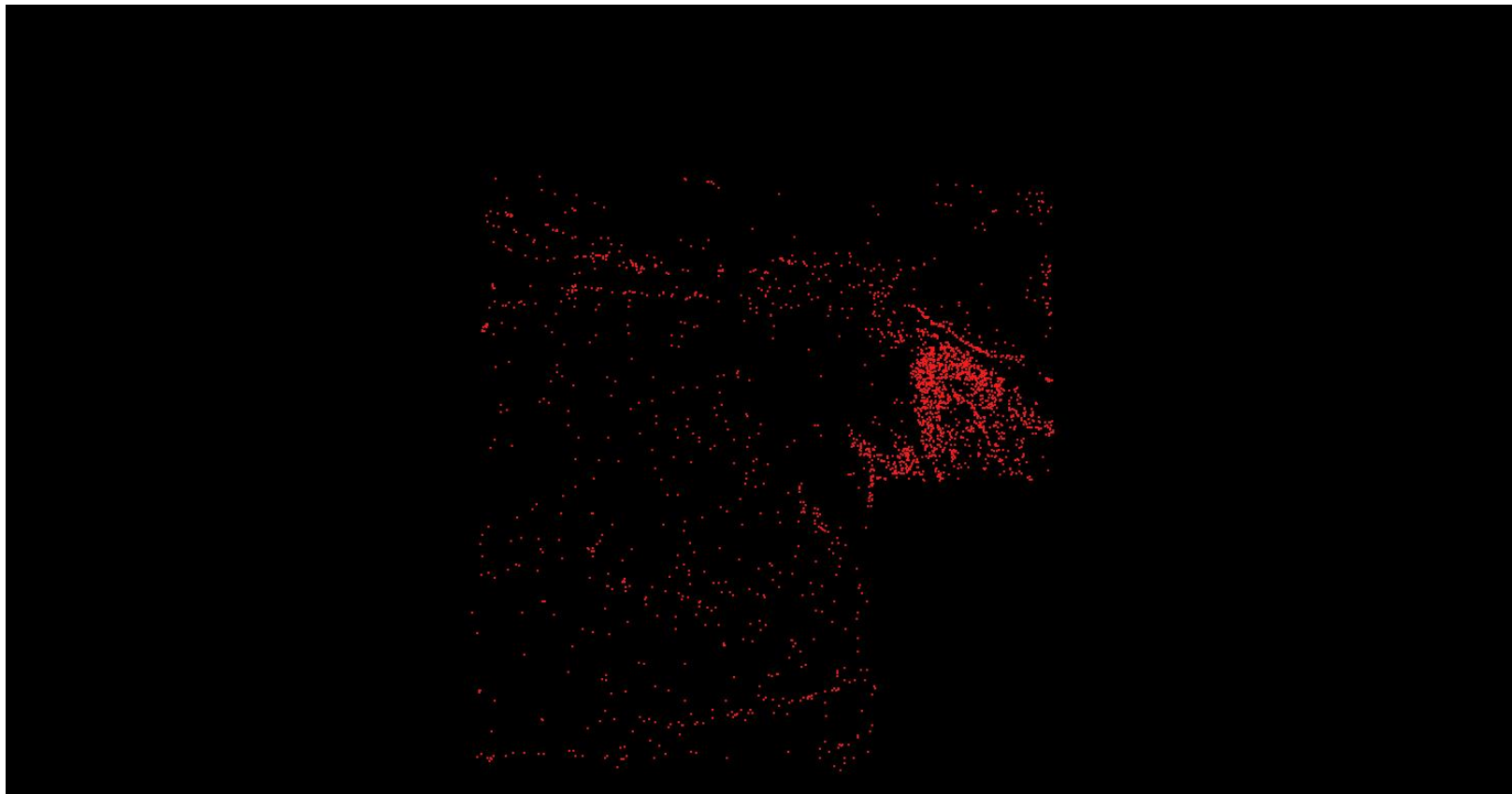


C-2 Report on Multiple Discrete Returns - Second Returns

The purpose of this section is to show a graphic of lidar data points colored by second returns. Blank flight lines can indicate a collection or processing problem dealing with lidar return attribute information.

[Data Source - Y:\Mapping\Projects\65220751_NE_Southwest\Production\Final_Client_Deliverables\Projectwide\UTM14\point_cloud\Swaths](Y:\Mapping\Projects\65220751_NE_Southwest\Production\Final_Client_Deliverables\Projectwide\UTM14\point_cloud\Swaths)

[Result Path - Y:\Mapping\Projects\65220751_NE_Southwest\Admin\OA_QC\NE_Southwest_UTM14_QC\C_2\ColorByReturns_SecondReturns.jpg](Y:\Mapping\Projects\65220751_NE_Southwest\Admin\OA_QC\NE_Southwest_UTM14_QC\C_2\ColorByReturns_SecondReturns.jpg)

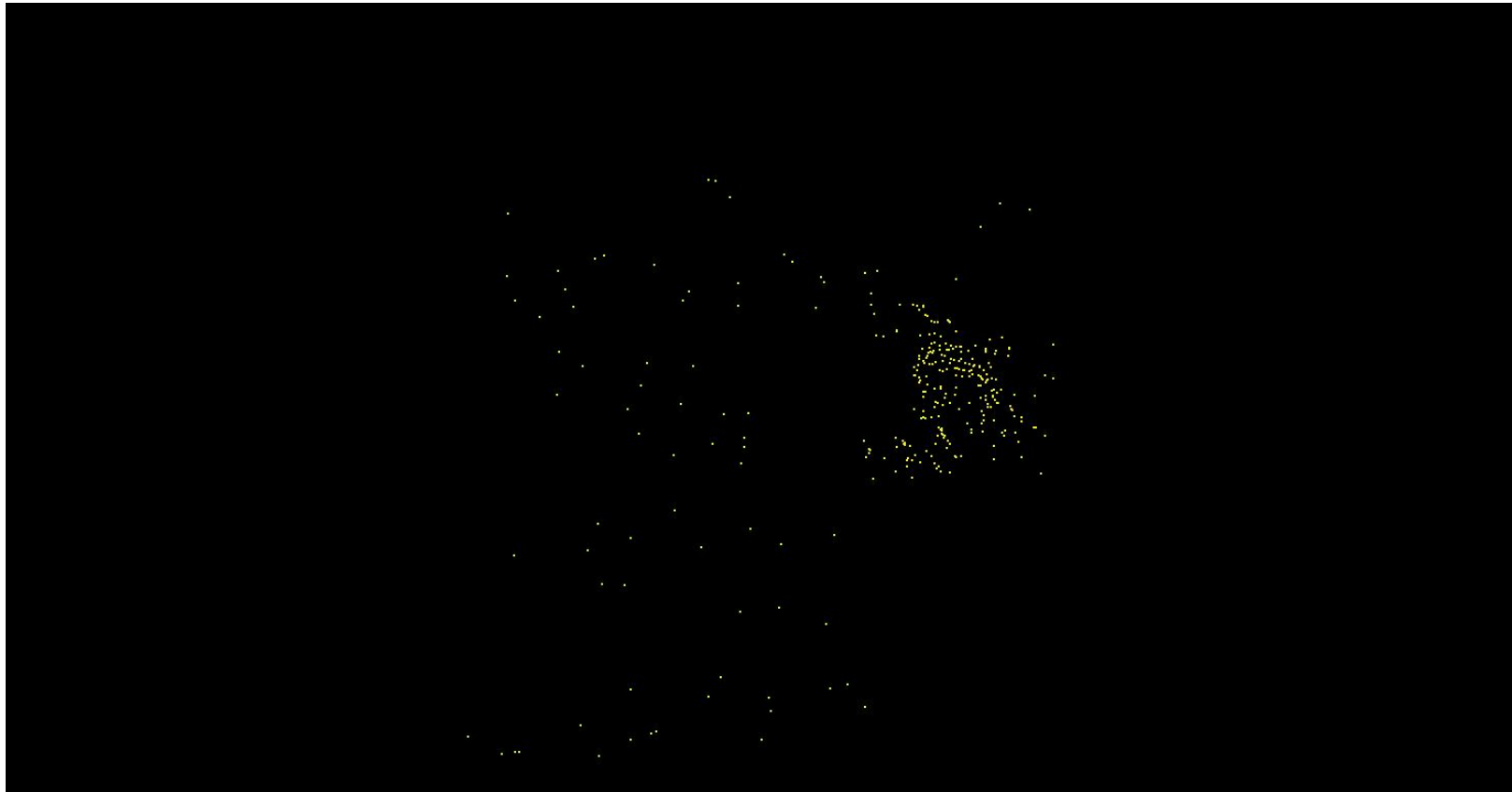


C-2 Report on Multiple Discrete Returns - Third Returns

The purpose of this section is to show a graphic of lidar data points colored by third returns. Blank flight lines can indicate a collection or processing problem dealing with lidar return attribute information.

[Data Source - Y:\Mapping\Projects\65220751_NE_Southwest\Production\Final_Client_Deliverables\Projectwide\UTM14\point_cloud\Swaths](Y:\Mapping\Projects\65220751_NE_Southwest\Production\Final_Client_Deliverables\Projectwide\UTM14\point_cloud\Swaths)

[Result Path - Y:\Mapping\Projects\65220751_NE_Southwest\Admin\OA_QC\NE_Southwest_UTM14_QC\C_2\ColorByReturns_ThirdReturns.jpg](Y:\Mapping\Projects\65220751_NE_Southwest\Admin\OA_QC\NE_Southwest_UTM14_QC\C_2\ColorByReturns_ThirdReturns.jpg)



C-2 Report on Multiple Discrete Returns - Other Returns

The purpose of this section is to show a graphic of lidar data points colored by fourth or other returns. Blank flight lines can indicate a collection or processing problem dealing with lidar return attribute information.

[Data Source - Y:\Mapping\Projects\65220751_NE_Southwest\Production\Final_Client_Deliverables\Projectwide\UTM14\point_cloud\Swaths](Y:\Mapping\Projects\65220751_NE_Southwest\Production\Final_Client_Deliverables\Projectwide\UTM14\point_cloud\Swaths)

[Result Path - Y:\Mapping\Projects\65220751_NE_Southwest\Admin\OA_QC\NE_Southwest_UTM14_QC\C_2\ColorByReturns_OtherReturns.jpg](Y:\Mapping\Projects\65220751_NE_Southwest\Admin\OA_QC\NE_Southwest_UTM14_QC\C_2\ColorByReturns_OtherReturns.jpg)

