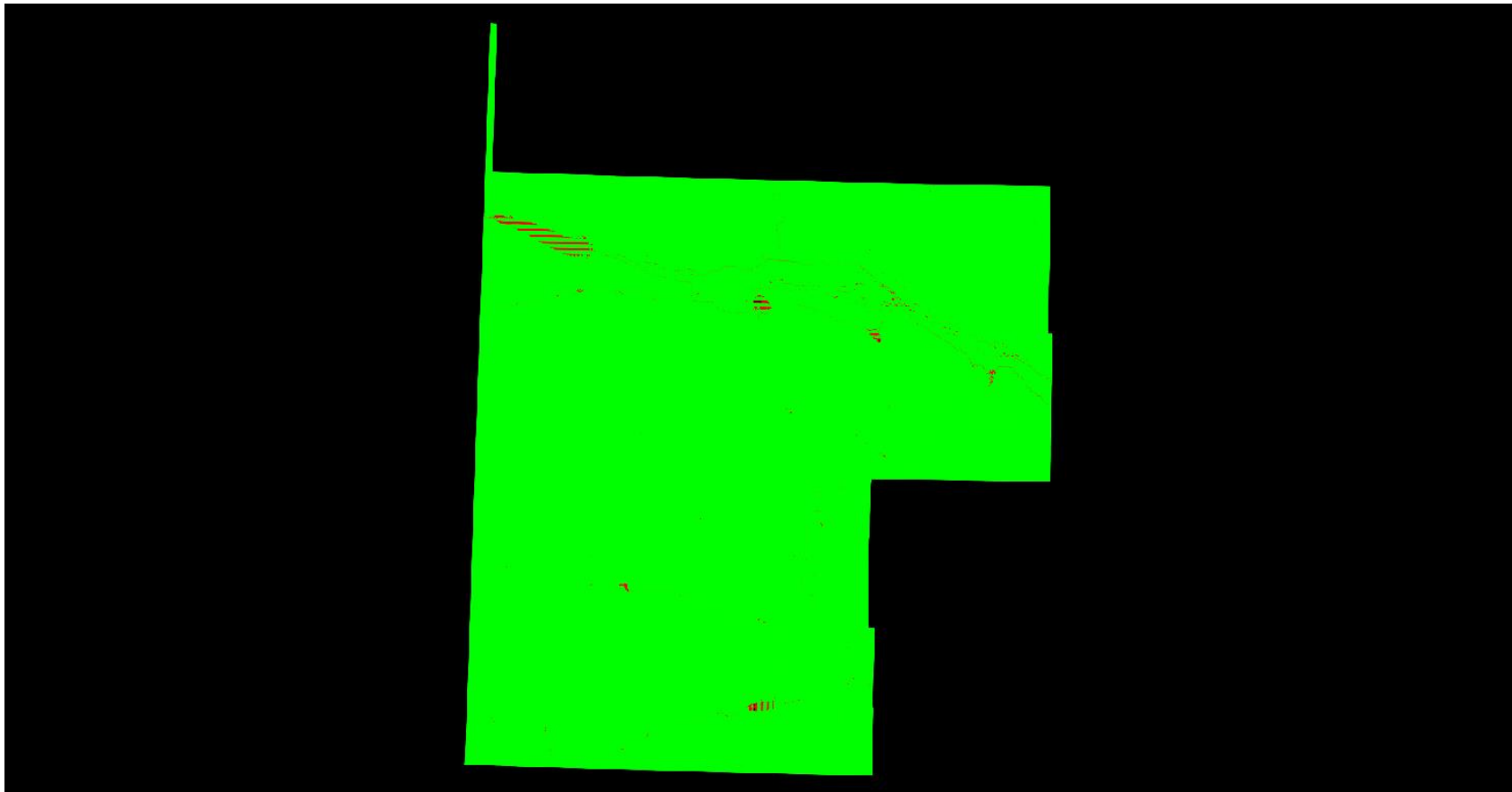


C-6.1 Report on Spatial Distribution and Regularity - continued



Cell size: 1.420 Meter

■ Green: Cells containing at least one first return lidar point (number of cells = 19,525,304,152)

■ Red: Cells not containing at least one first return lidar point (number of cells = 37,973,797)

■ Background Color: Null data

Percentage of cells in the grid that contain at least one first return lidar point = 99.81% (Requirement is typically 90%)

See JPG2000 file for full resolution results