



## Delivery Lot Summary Report: Delivery Lot 6 Part 2 August 11, 2016

**USGS Contract: G10PC00026**

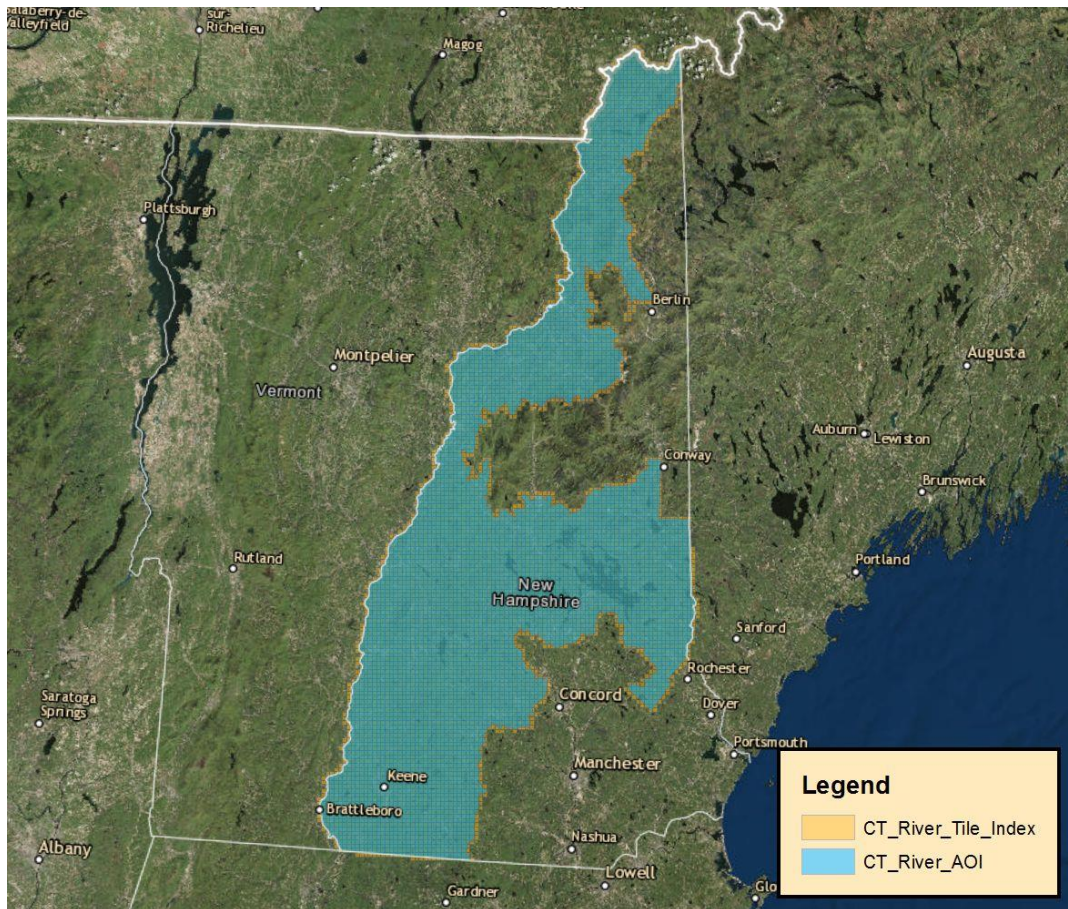
**USGS Task Order: G15PD00886**

**Task Order Name: MOD1 – BAA Connecticut River Watershed with FEMA HQ – Winnepesaukee AOI and WMNF AOI QL2 LiDAR**

**Contractor: GMR Aerial Surveys, dba Photo Science, A Quantum Spatial Company**

The following is a summary description of the deliverables and other pertinent information that comprise the shipment of Delivery Lot 6 Part 2 to USGS on August 11, 2016.

### Connecticut River LiDAR Delivery Lot 6 Part 2 Map:



### Task Order Spatial Reference System:

- Horizontal: UTM 19N, NAD83 (2011), Meters
- Vertical: NAVD88, GEOID12B, Meters



## Deliverables Summary:

1. C.1.d.(i) Raw Point Cloud Data: Included
  - LAS v1.4, Point Record Format 6 including File Source ID
  - Classification Schema:
    - (00) Code 0 – Created, never classified
  - Total Number of Files: 712
  - Total File Size: 2.79 TB
2. C.1.d.(ii) Classified Point Cloud: Included
  - LAS v1.4, Point Record Format 6 including File Source ID w/assigned value of 0
  - Classification Schema:
    - (01) Code 1 – Processed, but unclassified
    - (02) Code 2 – Bare-earth ground
    - (03) Code 7 – Noise
    - (05) Code 9 – Water
    - (06) Code 10 – Ignored Ground (Breakline Proximity)
    - (07) Code 17 – Bridge Decks
    - (08) Code 18 – High Noise
  - Total Number of Tiles: 6,675
  - Tile Dimensions: 1,500m x 1,500m
  - Total File Size: 2.65 TB
  - Delivery Lot 6 Tile Shape Files (Lot 6 Individual Tiles)
3. C.1.d.(iii) Bare Earth Surface (Raster DEM): Included
  - Format: ERDAS .IMG
  - Resolution: 1 meter grid cell size
  - Hydro Conditioning: Hydro Flattened
  - Total Number of Tiles: 6,675
  - Tile Dimensions: 1,500m x 1,500m (same used for Classified Point Cloud)
  - Total File Size: 58.7 GB
4. C.1.d.(iv) Breaklines: Included
  - Format: ESRI Geodatabase Format
  - Coverage: Lot 6 Continuous, Non-Tiled
  - Total File Size: 5.03 MB
5. C.1.d.(v) Control: Included
  - Format: Shape files
  - Total File Size: 56 KB



6. C.1.d.(vi) Intensity Image
  - Format: GeoTIFF, with world files
  - Resolution: 1 meter pixel size
  - Scale: 8 bit, 256 color gray scale
  - Total Number of Tiles: 6,675
  - Tile Dimensions: 1,500m x 1,500m (same used for Classified Point Cloud)
  - Total File Size: 19.9 GB
  
7. C.1.d.(viii) Metadata: Included
  - Format: FGDC compliant, XML
  - File Types: Project, Deliverable product group (Classified .las, DEM, Breaklines & Intensity Images)
  
8. C.1.d.(ix) Project Report:
  - Delivery Lot Summary Report: Lot 6 Included
  - Overall Project Report: Lot 6 Included
  
9. Lot 6 QA & Accuracy Reporting
  - Calibration Control Point and NVA/VVA QC Checkpoints Testing Results (Excel File): Included
  - FOCUS Report (PDF File): Included
  - Final Delivery Check Report (PDF File): Included

**Delivery Lot Notes/Comments:**

Delivery Lot 6 Part 2 consists of all required deliverables for the entirety delivery Lot 6. The deliverable data from the Lot 6 Part 1 delivery has been merged with the Lot 6 Part 2 data to form a complete delivery. The revisions from the USGS QA report "CT\_River-Lot6-Part1-Winnepesaukee\_2015\_qa\_report.pdf" have also been incorporated.