

Classified Point Cloud

Deliverable 1 Summary

✓ General		
Folder:	F:\USGS_Connecticut_River_LiDAR_Lot6_Part2\Classified_LAS	
Total # of Files:	6,675	(All Valid)
Total File Size:	2.7 TB	(2,919,122,807,655 bytes)

✓ Tile Sizes		
Median Tile Size:	1,500m x 1,500m	
Minimum Tile Size:	419m x 412m	
Maximum Tile Size:	1,500m x 1,500m	
X Range:	208500.00m to 343499.99m	
Y Range:	4732500.00m to 5020499.99m	
Elevation Range:	-123.06m to 1949.10m	

✓ LAS Version And Point Record Formats		
v1.4, Point Record Format 6	6,675 of 6,675 Tiles	

✓ Spatial Reference System		
Horizontal Projection	NAD83(2011) / UTM zone 19N	6,675 of 6,675 Tiles
Horizontal Datum	NAD83 (National Spatial Reference System 2011)	6,675 of 6,675 Tiles
Horizontal Units	meter	6,675 of 6,675 Tiles
Vertical Datum	NAVD88 height	6,675 of 6,675 Tiles
Vertical Units	meter	6,675 of 6,675 Tiles
Storage Method	WKT	6,675 of 6,675 Tiles

✓ GPS Time Type		
Adjusted	6,675 of 6,675 Tiles	

✓ File Source ID Equals 0		
Yes	6,675 of 6,675 Tiles	

✓ VLR/EVLR Reserved Equals 0		
Yes	18,014 of 18,014 Records	

✓ Unnecessary Bytes At End Of File		
No	6,675 of 6,675 Tiles	

✓ Legacy Point Count Check		
Zero	6,675 of 6,675 Tiles	

✓ System Identifier		
Quantum Spatial	6,675 of 6,675 Tiles	

✓ Generating Software		
LiDAR Suite	6,675 of 6,675 Tiles	

Classified Point Cloud Continued...

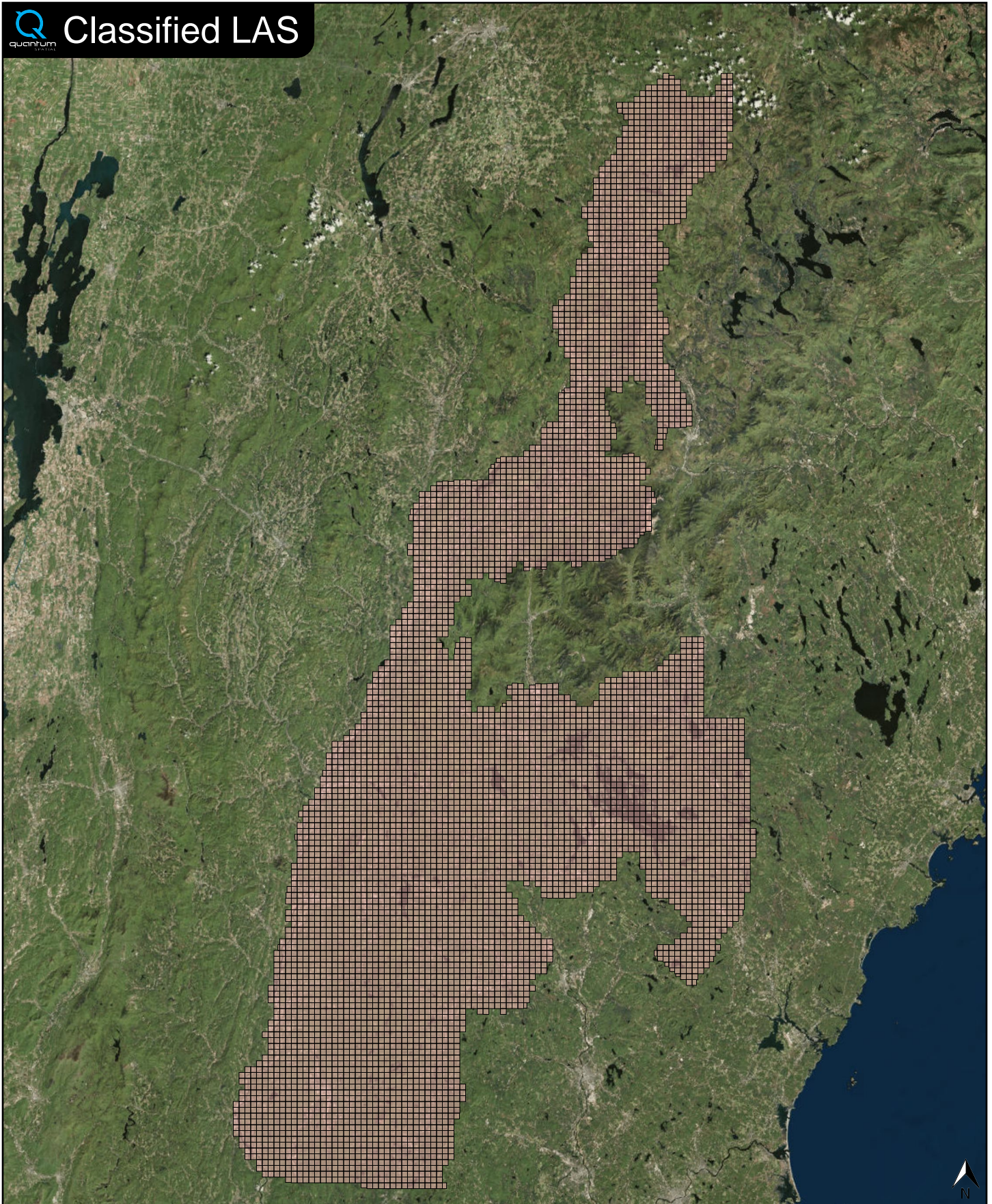
Deliverable 1 Summary

Point Classifications		
Class 1	59.29%	57,690,898,726 Points
Class 2	40.20%	39,112,561,039 Points
Class 7	0.00%	1,156,168 Points
Class 9	0.50%	490,133,597 Points
Class 10	0.01%	6,654,501 Points
Class 17	0.00%	1,239,254 Points
Class 18	0.00%	1,009,275 Points

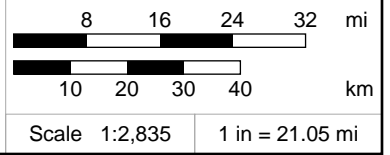
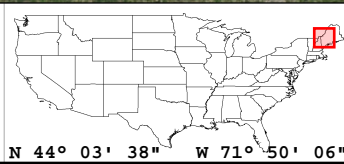
✓ Point Statistics	
Scan Angle:	-50 to 56
Intensity:	0 to 65535
First Date:	10/26/2015 7:35:04 PM
Last Date:	4/29/2016 6:46:32 PM



Classified LAS



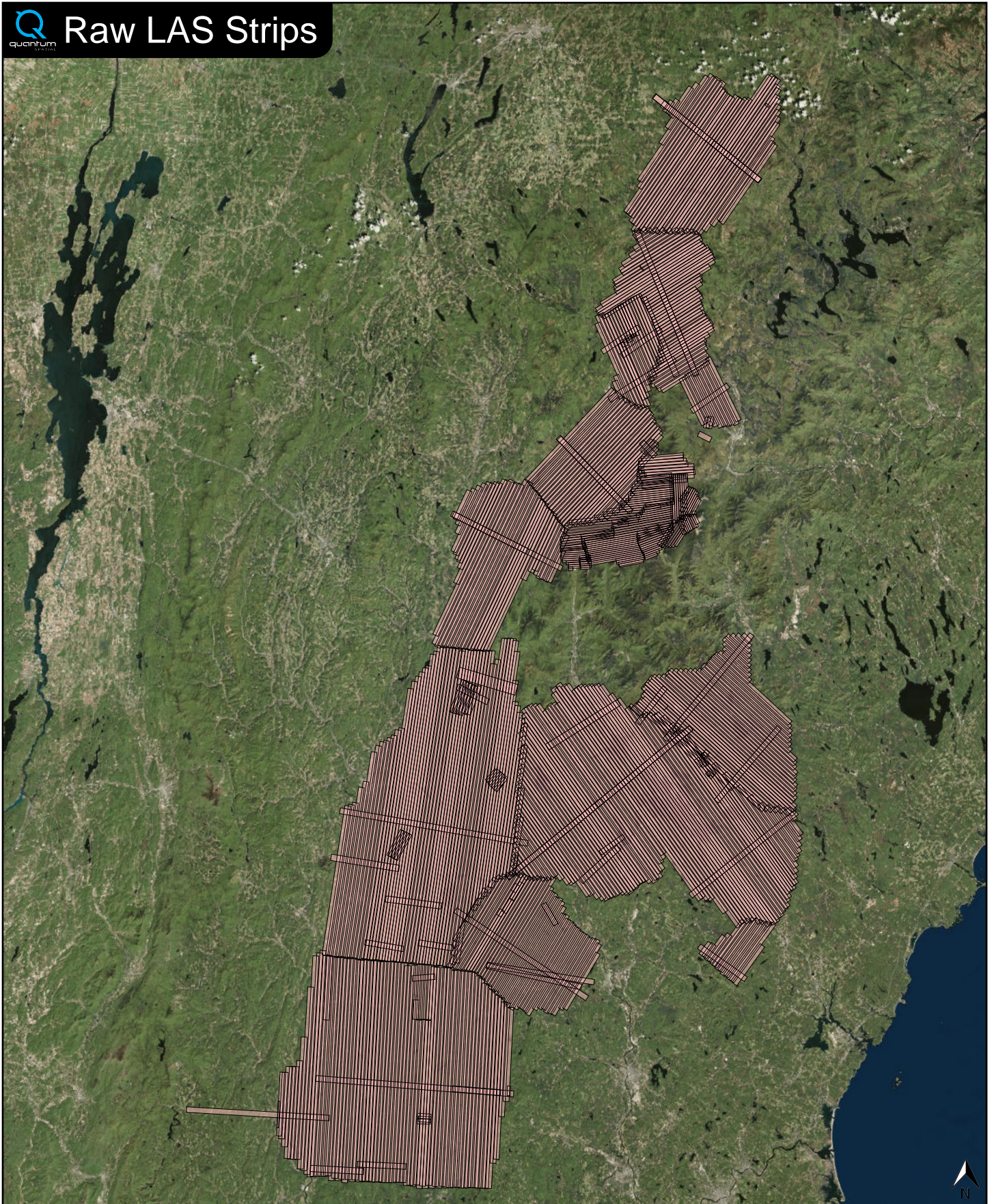
Classified LAS Tiles (6,675)



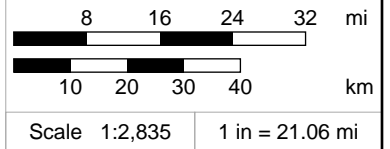
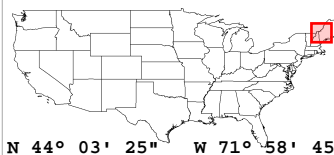
Raw LAS Flight Line Strips

Deliverable 2 Summary

✓ General		
Folder:	G:\USGS_Connecticut_River_LiDAR_Lot6_Part2\Unclassified_Calibrated_Flightline_Swath_LAS	
Total # of Files:	712	(All Valid)
Total File Size:	2.8 TB	(3,076,108,544,194 bytes)
✓ Raw LAS Strips		
Elevation Range:	-123m to 1949m	
✓ LAS Version And Point Record Formats		
v1.4, Point Record Format 6		712 of 712 Strips
✓ Spatial Reference System		
Horizontal Projection	NAD83(2011) / UTM zone 19N	712 of 712 Strips
Horizontal Datum	NAD83 (National Spatial Reference System 2011)	712 of 712 Strips
Horizontal Units	meter	712 of 712 Strips
Vertical Datum	NAVD88 height	712 of 712 Strips
Vertical Units	meter	712 of 712 Strips
Storage Method	WKT	712 of 712 Strips
✓ GPS Time Type		
Adjusted		712 of 712 Strips
✓ File Source IDs		
Equals Zero:	None	
All Unique:	Yes	
FLs:	100 - 209, 211 - 291, 294 - 525, 527 - 642, 644 - 725, 900 - 906, 908 - 918, 920 - 921, 938, 940 - 964, 1144 - 1157, 1328 - 1357, 2001	
✓ VLR/EVLR Reserved Equals 0		
Yes		1,938 of 1,938 Records
✓ Unnecessary Bytes At End Of File		
No		712 of 712 Strips
✓ Legacy Point Count Check		
Zero		712 of 712 Strips
✓ System Identifier		
Quantum Spatial		712 of 712 Strips
✓ Generating Software		
LiDAR Suite		712 of 712 Strips



FL Strips (712)

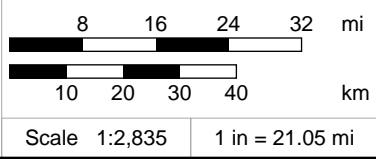
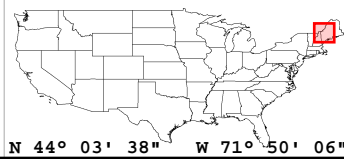
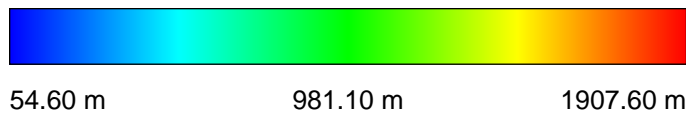
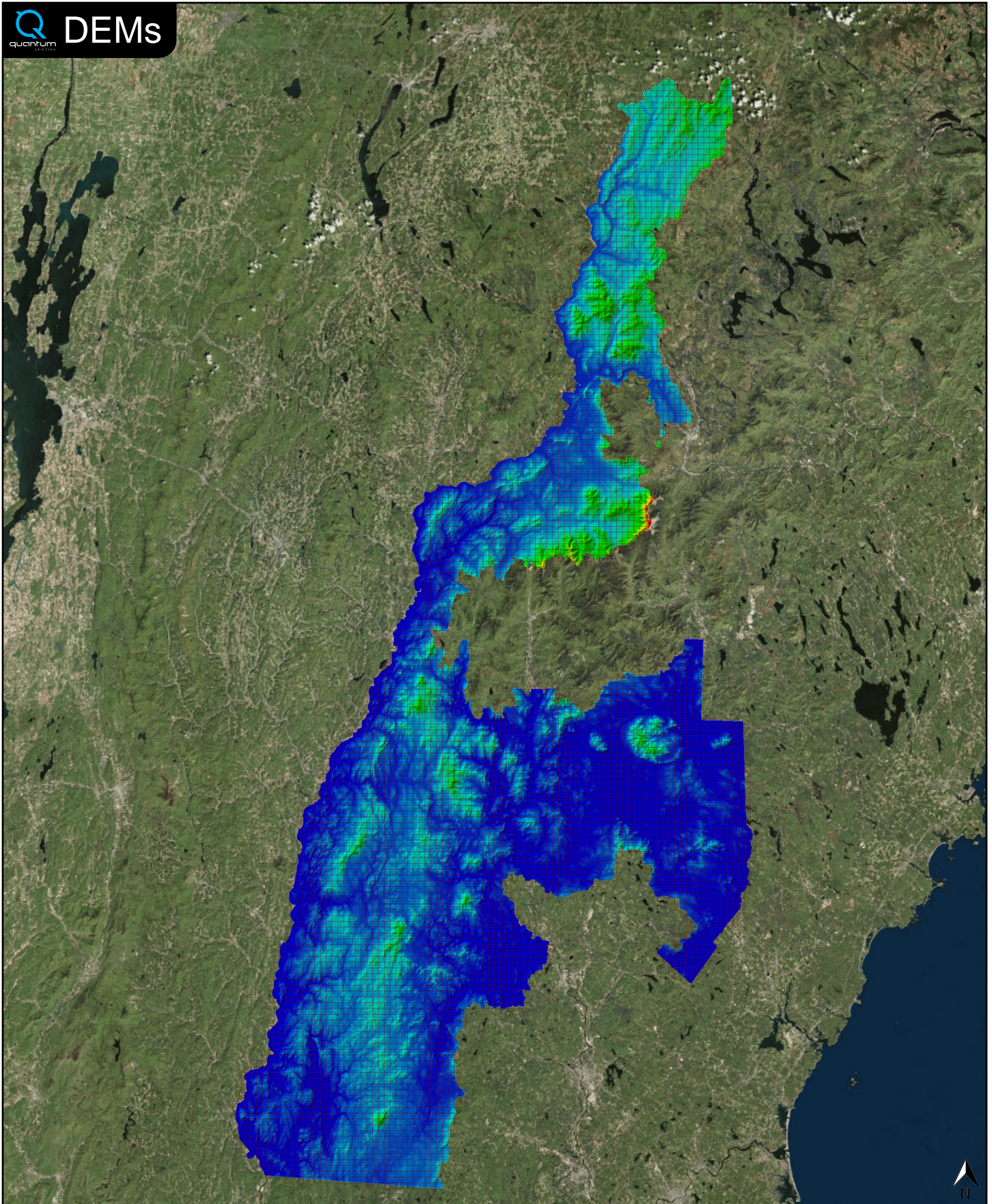


✓ General		
Folder:	F:\USGS_Connecticut_River_LiDAR_Lot6_Part2\Raster_DEM	
Total # of Files:	6,675	(All Valid)
Total File Size:	58.8 GB	(63,100,491,014 bytes)

✓ Tile Sizes		
Median Tile Size:	1,500m x 1,500m	
Minimum Tile Size:	1,500m x 1,500m	
Maximum Tile Size:	1,500m x 1,500m	
X Range:	208500.00m to 343500.00m	
Y Range:	4732500.00m to 5020500.00m	
Elevation Range:	0.00m to 1135.14m	

✓ Spatial Reference System		
Horizontal Projection	NAD_1983_2011_UTM_Zone_19N	6,675 of 6,675 Tiles
Horizontal Datum	D_NAD_1983_2011	6,675 of 6,675 Tiles
Horizontal Units	Meter	6,675 of 6,675 Tiles
Vertical Datum	NAVD88 height	6,675 of 6,675 Tiles
Vertical Units	Meter	6,675 of 6,675 Tiles

✓ Raster		
File Type:	IMG	6,675 of 6,675
Bands:	1	6,675 of 6,675
Grid Size (pixels):	1500 x 1500	6,675 of 6,675
Pixel Resolution:	1.000000000m x 1.000000000m	6,675 of 6,675
Pixel Type:	32-bit Floating Point	6,675 of 6,675
Compression:	None	6,675 of 6,675
No Data Value:	-32767	6,675 of 6,675

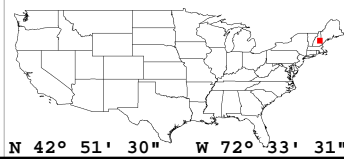
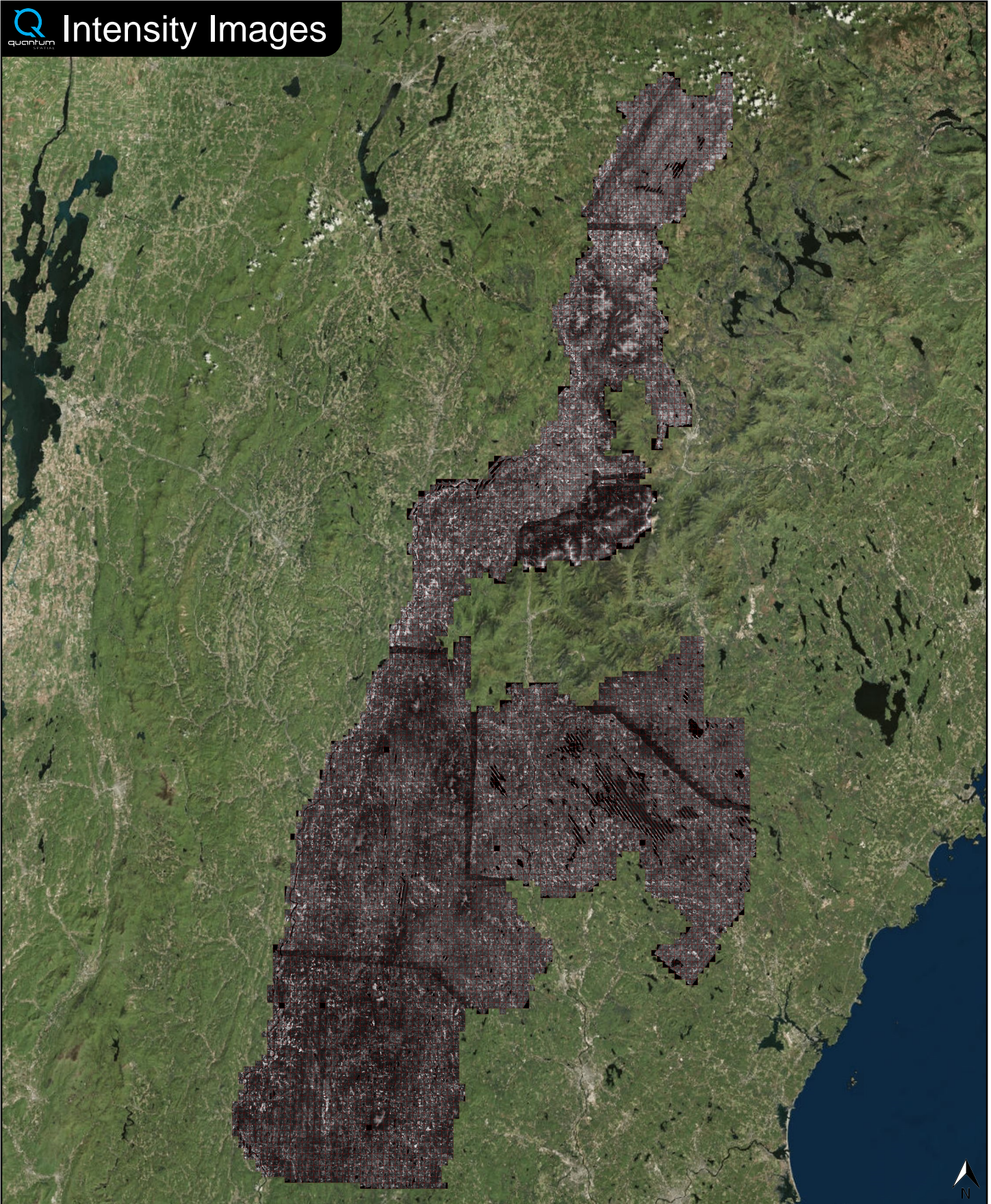


✓ General		
Folder:	F:\USGS_Connecticut_River_LiDAR_Lot6_Part2\Intensity_Images	
Total # of Files:	6,675	(All Valid)
Total File Size:	20.0 GB	(21,452,448,750 bytes)

✓ Tile Sizes		
Median Tile Size:	1,500m x 1,500m	
Minimum Tile Size:	1,500m x 1,500m	
Maximum Tile Size:	1,500m x 1,500m	
X Range:	208500.00m to 343500.00m	
Y Range:	4732500.00m to 5020500.00m	

✓ Spatial Reference System		
Horizontal Projection	NAD_1983_2011_UTM_Zone_19N	6,675 of 6,675 Tiles
Horizontal Datum	NAD_1983_2011	6,675 of 6,675 Tiles
Horizontal Units	Meter	6,675 of 6,675 Tiles
Vertical Datum	NAVD88 height	6,675 of 6,675 Tiles
Vertical Units	Meter	6,675 of 6,675 Tiles

✓ Raster		
File Type:	TIF	6,675 of 6,675
Bands:	1	6,675 of 6,675
Grid Size (pixels):	1500 x 1500	6,675 of 6,675
Pixel Resolution:	1.00000000m x 1.00000000m	6,675 of 6,675
Pixel Type:	8-bit Unsigned Integer (MINISBLACK)	6,675 of 6,675
Compression:	NONE	6,675 of 6,675
No Data Value:	NONE	6,675 of 6,675



N 42° 51' 30" W 72° 33' 31"

