

Classified Point Cloud

Deliverable 1 Summary

| ✓ General | |
|-------------------|--|
| Folder: | E:\Umbagog_NH_ME_LiDAR\Primary_AOI\point_cloud\tilecls |
| Total # of Files: | 3,465 (All Valid) |
| Total File Size: | 1.7 TB (1,846,758,402,139 bytes) |

| ✓ Tile Sizes | |
|--------------------|----------------------------|
| Median Tile Size: | 1,500m x 1,500m |
| Minimum Tile Size: | 812m x 700m |
| Maximum Tile Size: | 1,500m x 1,500m |
| X Range: | 282000.00m to 391171.34m |
| Y Range: | 4852500.00m to 5032499.99m |
| Elevation Range: | 12.86m to 1948.97m |

| ✓ LAS Version And Point Record Formats | |
|--|----------------------|
| v1.4, Point Record Format 6 | 3,465 of 3,465 Tiles |

| ✓ Spatial Reference System | | |
|----------------------------|--|----------------------|
| Horizontal Projection | NAD83(2011) / UTM zone 19N | 3,465 of 3,465 Tiles |
| Horizontal Datum | NAD83 (National Spatial Reference System 2011) | 3,465 of 3,465 Tiles |
| Horizontal Units | meter | 3,465 of 3,465 Tiles |
| Vertical Datum | NAVD88 height | 3,465 of 3,465 Tiles |
| Vertical Units | meter | 3,465 of 3,465 Tiles |
| Storage Method | WKT | 3,465 of 3,465 Tiles |

| ✓ GPS Time Type | |
|-----------------|----------------------|
| Adjusted | 3,465 of 3,465 Tiles |

| ✓ File Source ID Equals 0 | |
|---------------------------|----------------------|
| Yes | 3,465 of 3,465 Tiles |

| ✓ VLR/EVLR Reserved Equals 0 | |
|------------------------------|------------------------|
| Yes | 9,550 of 9,550 Records |

| ✓ Unnecessary Bytes At End Of File | |
|------------------------------------|----------------------|
| No | 3,465 of 3,465 Tiles |

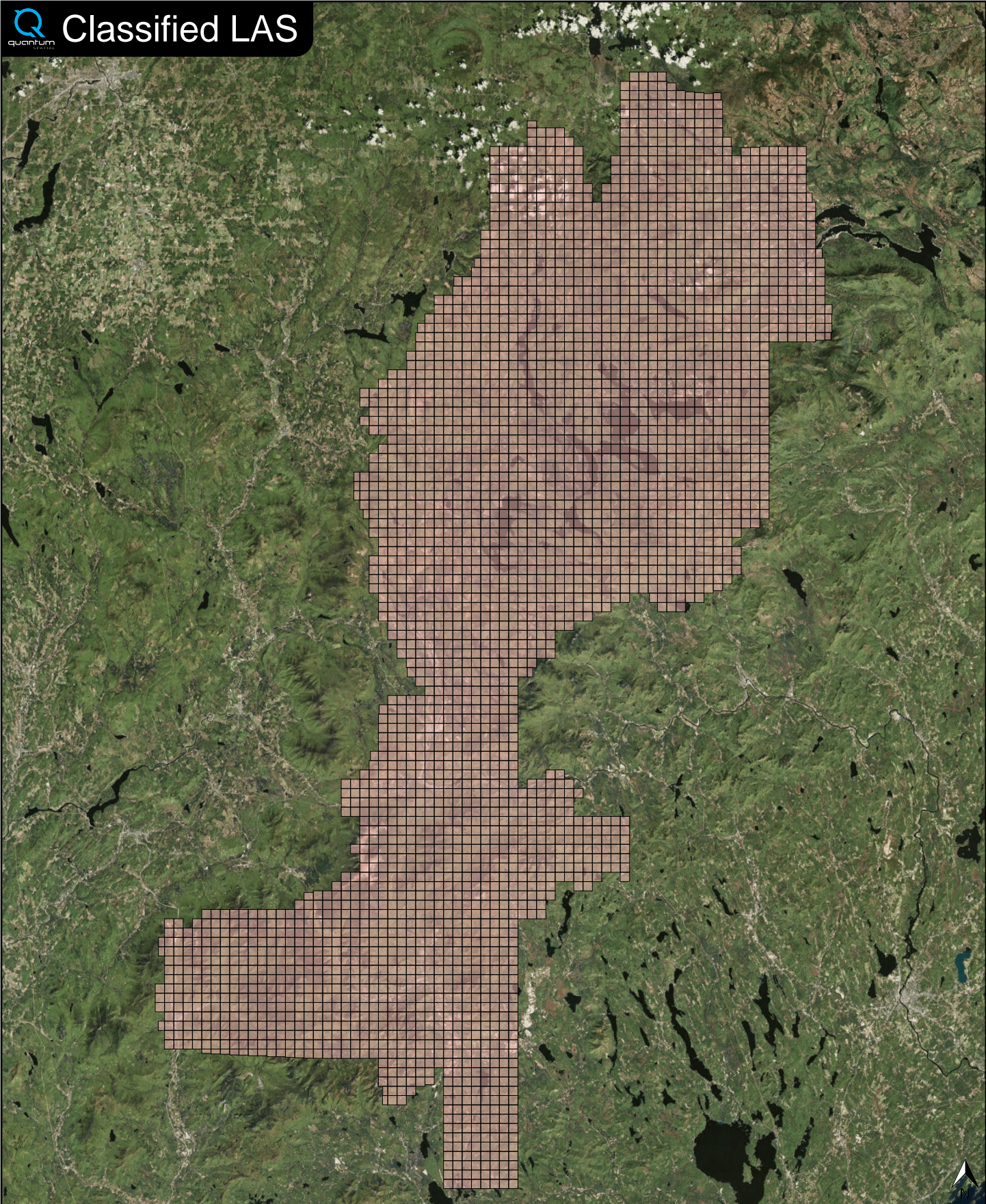
| ✓ Legacy Point Count Check | |
|----------------------------|----------------------|
| Zero | 3,465 of 3,465 Tiles |

| ✓ System Identifier | |
|---------------------|----------------------|
| Quantum Spatial | 3,465 of 3,465 Tiles |

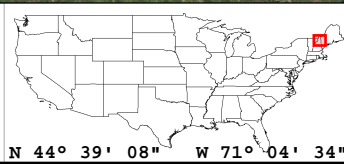
| ✓ Generating Software | |
|-----------------------|----------------------|
| LiDAR Suite | 3,465 of 3,465 Tiles |



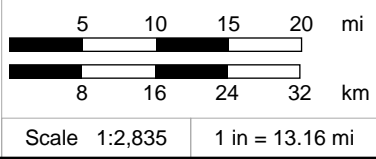
Classified LAS



Classified LAS Tiles (3,465)



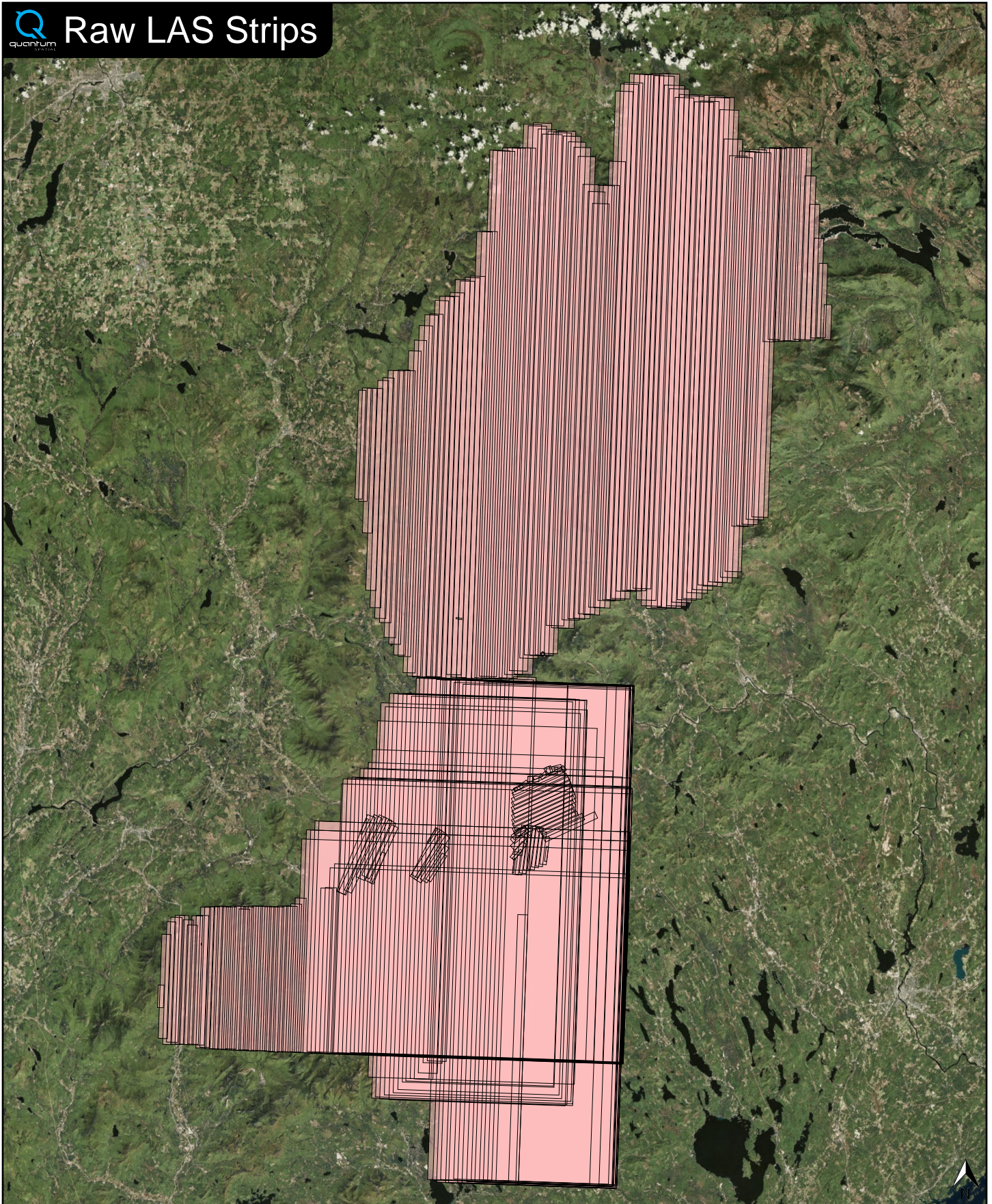
N 44° 39' 08" W 71° 04' 34"



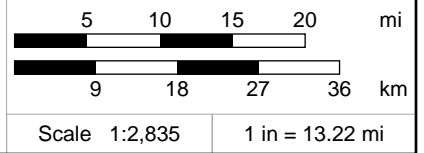
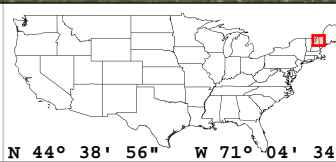
Raw LAS Flight Line Strips

Deliverable 2 Summary

| | | |
|---|---|---------------------------|
| ✓ General | | |
| Folder: | E:\Umbagog_NH_ME_LiDAR\Primary_AOI\point_cloud\swathuncls | |
| Total # of Files: | 241 | (All Valid) |
| Total File Size: | 1.7 TB | (1,846,742,960,210 bytes) |
| ✓ Raw LAS Strips | | |
| Elevation Range: | 13m to 1949m | |
| ✓ LAS Version And Point Record Formats | | |
| v1.4, Point Record Format 6 | | 241 of 241 Strips |
| ✓ Spatial Reference System | | |
| Horizontal Projection | NAD83(2011) / UTM zone 19N | 241 of 241 Strips |
| Horizontal Datum | NAD83 (National Spatial Reference System 2011) | 241 of 241 Strips |
| Horizontal Units | meter | 241 of 241 Strips |
| Vertical Datum | NAVD88 height | 241 of 241 Strips |
| Vertical Units | meter | 241 of 241 Strips |
| Storage Method | WKT | 241 of 241 Strips |
| ✓ GPS Time Type | | |
| Adjusted | | 241 of 241 Strips |
| ✓ File Source IDs | | |
| Equals Zero: | None | |
| All Unique: | Yes | |
| FLs: | 101 - 108, 110 - 185, 301 - 317, 330 - 344, 355 - 366, 386 - 387, 1001, 2003 - 2004, 2011 - 2018, 2022 - 2023, 2025 - 2027, 2029 - 2030, 2032 - 2034, 2038 - 2039, 2041 - 2067, 2069 - 2079, 2081 - 2084, 2086 - 2095, 2097 - 2098, 2108 - 2109, 2112, 2115 - 2128, 2150 - 2165, 2204 | |
| ✓ VLR/EVLR Reserved Equals 0 | | |
| Yes | | 773 of 773 Records |
| ✓ Unnecessary Bytes At End Of File | | |
| No | | 241 of 241 Strips |
| ✓ Legacy Point Count Check | | |
| Zero | | 241 of 241 Strips |
| ✓ System Identifier | | |
| Quantum Spatial | | 241 of 241 Strips |
| ✓ Generating Software | | |
| LiDAR Suite | | 241 of 241 Strips |



FL Strips (241)



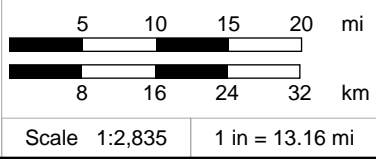
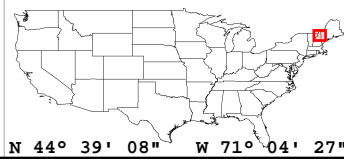
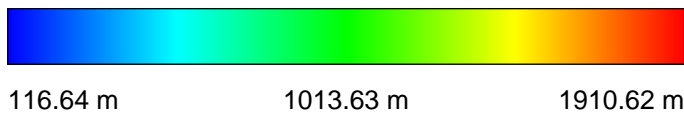
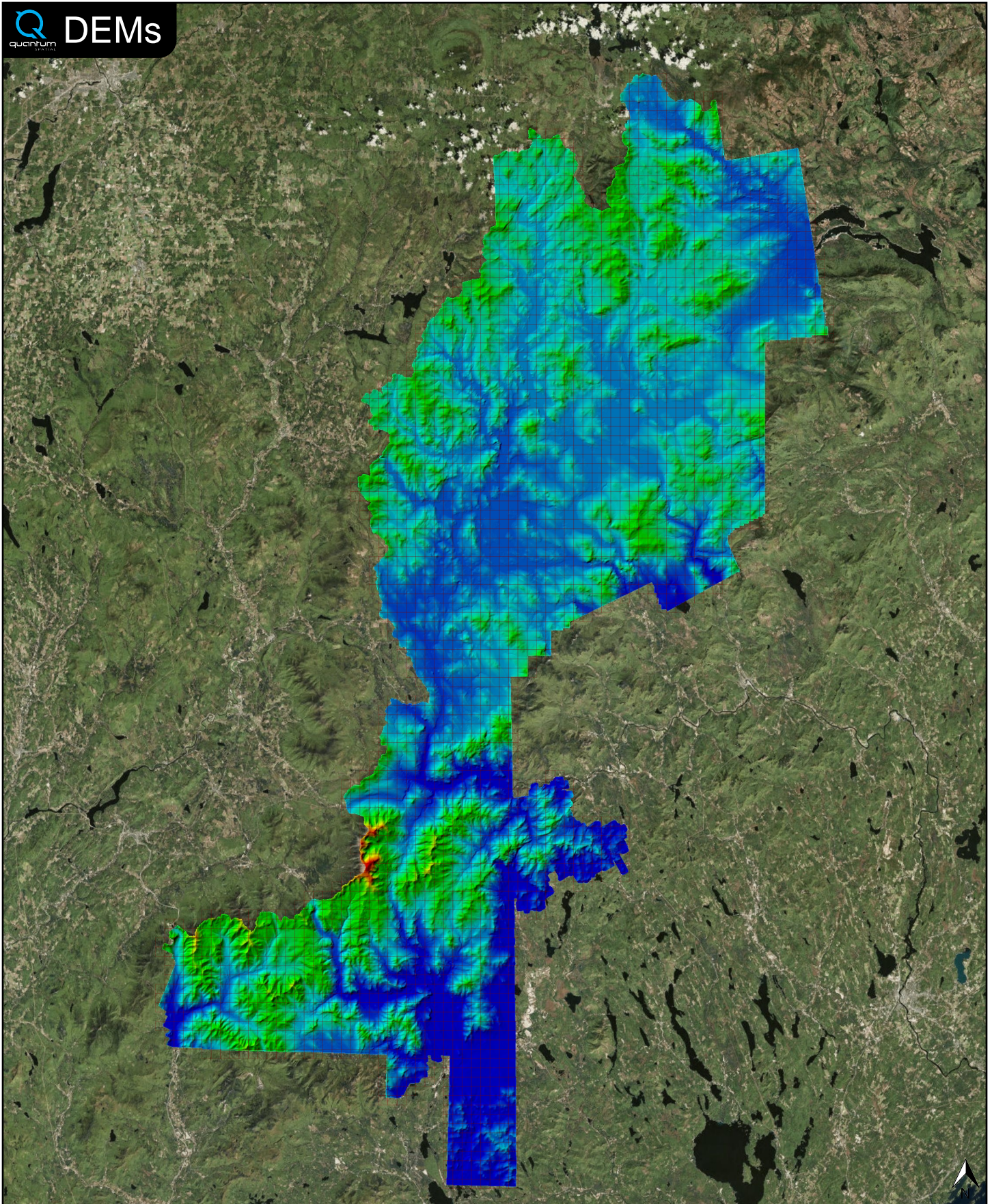
| ✓ General | | |
|-------------------|--|------------------------|
| Folder: | E:\Umbagog_NH_ME_LiDAR\Primary_AOI\bare_earth\be_rasters | |
| Total # of Files: | 3,465 | (All Valid) |
| Total File Size: | 30.5 GB | (32,749,710,840 bytes) |

| ✓ Tile Sizes | | |
|--------------------|----------------------------|--|
| Median Tile Size: | 1,500m x 1,500m | |
| Minimum Tile Size: | 1,500m x 1,500m | |
| Maximum Tile Size: | 1,500m x 1,500m | |
| X Range: | 282000.00m to 391500.00m | |
| Y Range: | 4852500.00m to 5032500.00m | |
| Elevation Range: | 116.51m to 1916.12m | |

| ✓ Spatial Reference System (Method: Eprj_MapProjection842) | | |
|--|----------------------------|----------------------|
| Horizontal Projection | NAD_1983_2011_UTM_Zone_19N | 3,465 of 3,465 Tiles |
| Horizontal Datum | D_NAD_1983_2011 | 3,465 of 3,465 Tiles |
| Horizontal Units | Meter | 3,465 of 3,465 Tiles |
| Vertical Datum | NAVD88 height | 3,465 of 3,465 Tiles |
| Vertical Units | Meter | 3,465 of 3,465 Tiles |

| ✓ Spatial Reference System (Method: Eprj_ProParameters) | | |
|---|-----------------|----------------------|
| Zone | UTM 19 | 3,465 of 3,465 Tiles |
| Datum | D_NAD_1983_2011 | 3,465 of 3,465 Tiles |
| Spheroid | GRS_1980 | 3,465 of 3,465 Tiles |

| ✓ Raster | | |
|---------------------|---------------------------|----------------|
| File Type: | IMG | 3,465 of 3,465 |
| Bands: | 1 | 3,465 of 3,465 |
| Grid Size (pixels): | 1500 x 1500 | 3,465 of 3,465 |
| Pixel Resolution: | 1.00000000m x 1.00000000m | 3,465 of 3,465 |
| Pixel Type: | 32-bit Floating Point | 3,465 of 3,465 |
| Compression: | None | 3,465 of 3,465 |
| No Data Value: | -32767 | 3,326 of 3,465 |
| | -9999 | 139 of 3,465 |

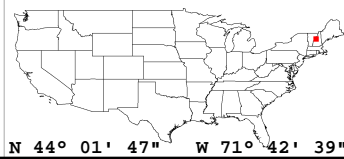
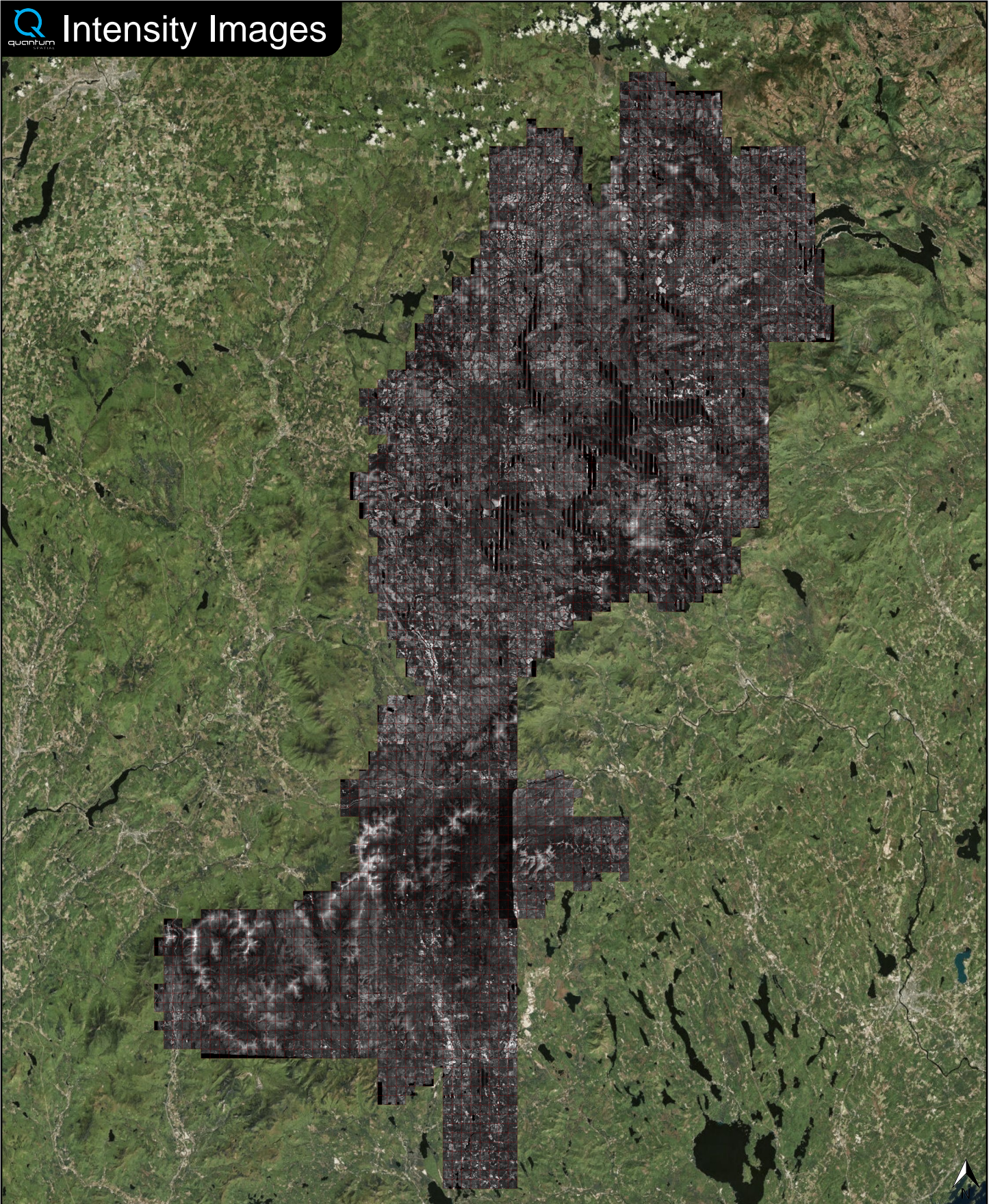


| ✓ General | |
|-------------------|---|
| Folder: | E:\Umbagog_NH_ME_LiDAR\Primary_AOI\other\Intensity_Images |
| Total # of Files: | 3,465 (All Valid) |
| Total File Size: | 10.4 GB (11,135,962,530 bytes) |

| ✓ Tile Sizes | |
|--------------------|----------------------------|
| Median Tile Size: | 1,500m x 1,500m |
| Minimum Tile Size: | 1,500m x 1,500m |
| Maximum Tile Size: | 1,500m x 1,500m |
| X Range: | 282000.00m to 391500.00m |
| Y Range: | 4852500.00m to 5032500.00m |

| ✓ Spatial Reference System | | |
|----------------------------|----------------------------|----------------------|
| Horizontal Projection | NAD_1983_2011_UTM_Zone_19N | 3,465 of 3,465 Tiles |
| Horizontal Datum | NAD_1983_2011 | 3,465 of 3,465 Tiles |
| Horizontal Units | Meter | 3,465 of 3,465 Tiles |
| Vertical Datum | NAVD88 height | 3,465 of 3,465 Tiles |
| Vertical Units | Meter | 3,465 of 3,465 Tiles |

| ✓ Raster | | |
|---------------------|-------------------------------------|----------------|
| File Type: | TIF | 3,465 of 3,465 |
| Bands: | 1 | 3,465 of 3,465 |
| Grid Size (pixels): | 1500 x 1500 | 3,465 of 3,465 |
| Pixel Resolution: | 1.00000000m x 1.00000000m | 3,465 of 3,465 |
| Pixel Type: | 8-bit Unsigned Integer (MINISBLACK) | 3,465 of 3,465 |
| Compression: | NONE | 3,465 of 3,465 |
| No Data Value: | NONE | 3,465 of 3,465 |



N 44° 01' 47" W 71° 42' 39"

