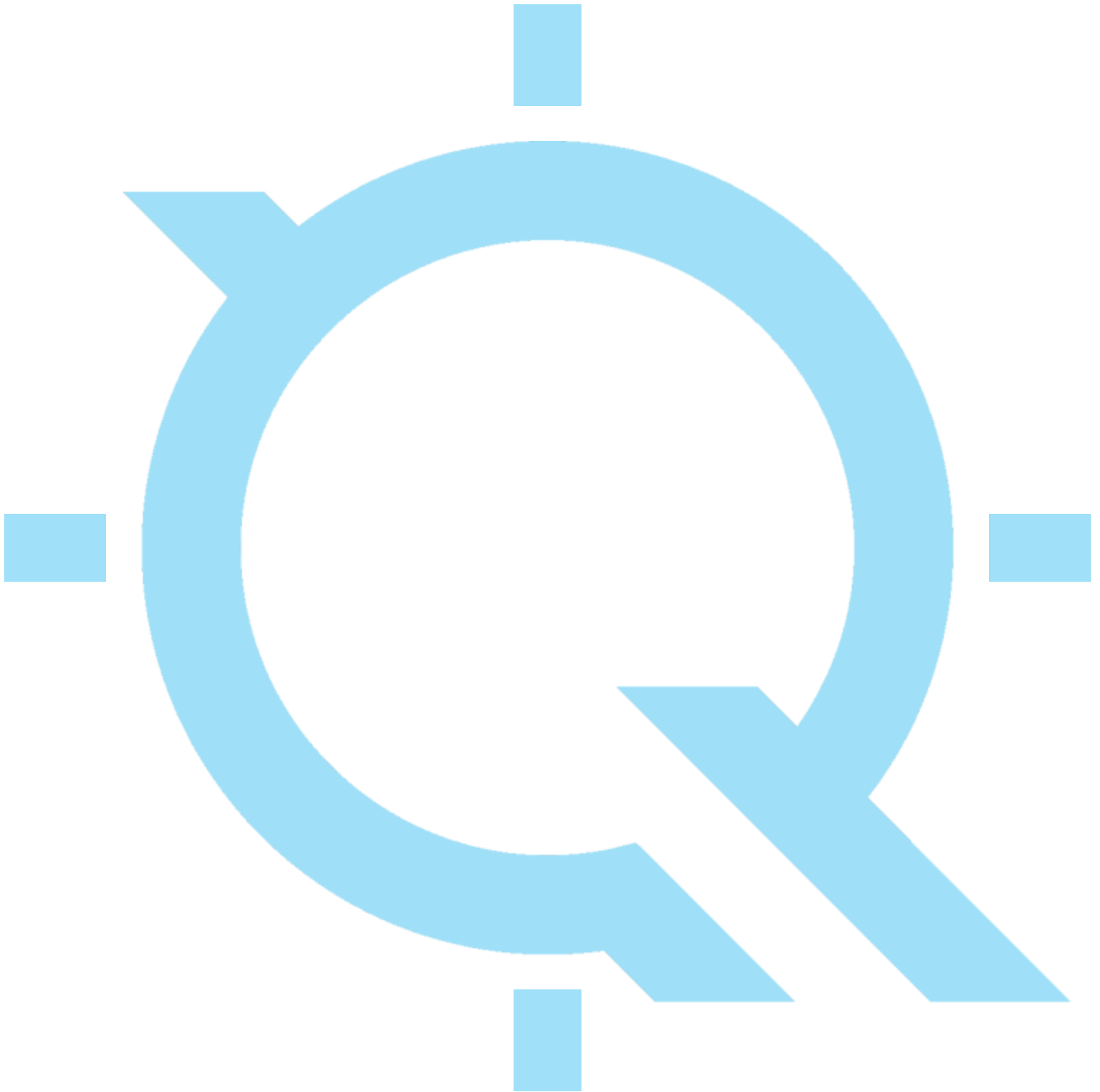


FOCUS on Accuracy



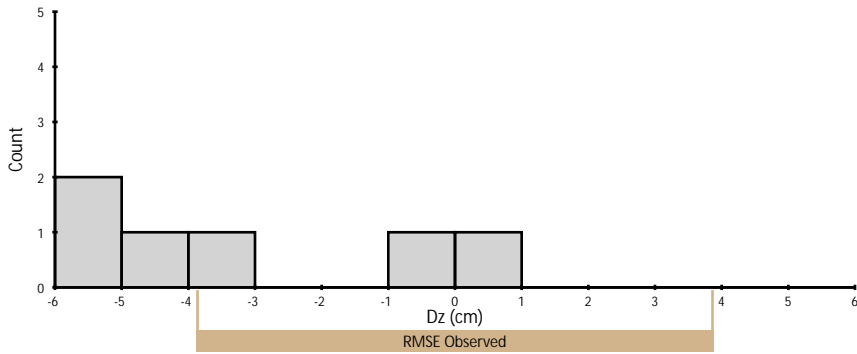
140G0219F0005_Lot8_Block3_UTM13
LiDAR Accuracy Assessment

Table of Contents

Project Summary.....	1
Type Maps.....	2
Control Point Breakdown.....	3
Appendix - Individual Control Point Summaries.....	A1 - A18

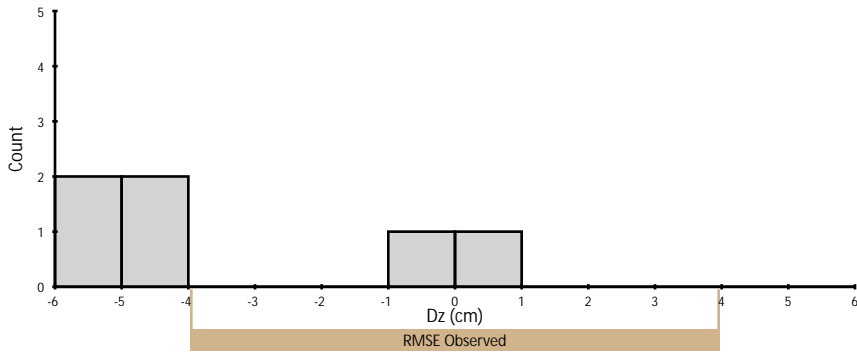
Project Summary

Nonvegetated Vertical Accuracy (Point Cloud)



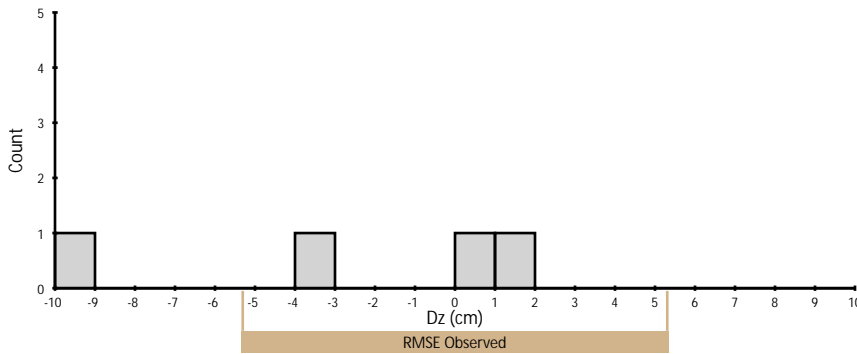
	Observed	Required
RMSE	3.88 cm	10.00 cm
95% Confidence Level	7.61 cm	19.60 cm
Mean	-3.20 cm	N/A
Count	6	N/A

Nonvegetated Vertical Accuracy (DEM)



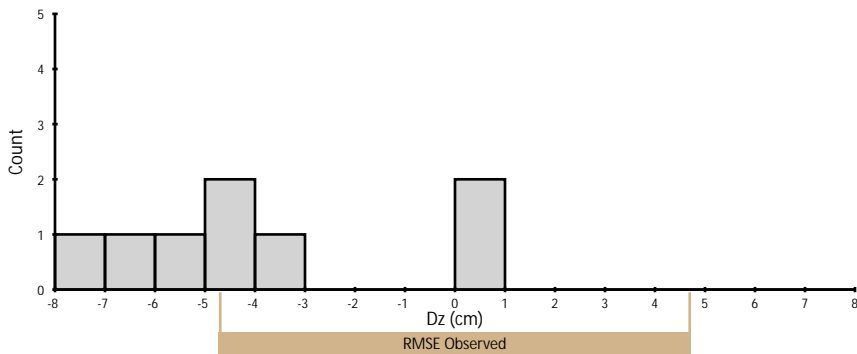
	Observed	Required
RMSE	3.97 cm	N/A
95% Confidence Level	7.79 cm	19.60 cm
Mean	-3.17 cm	N/A
Count	6	N/A

Vegetated Vertical Accuracy (DEM)



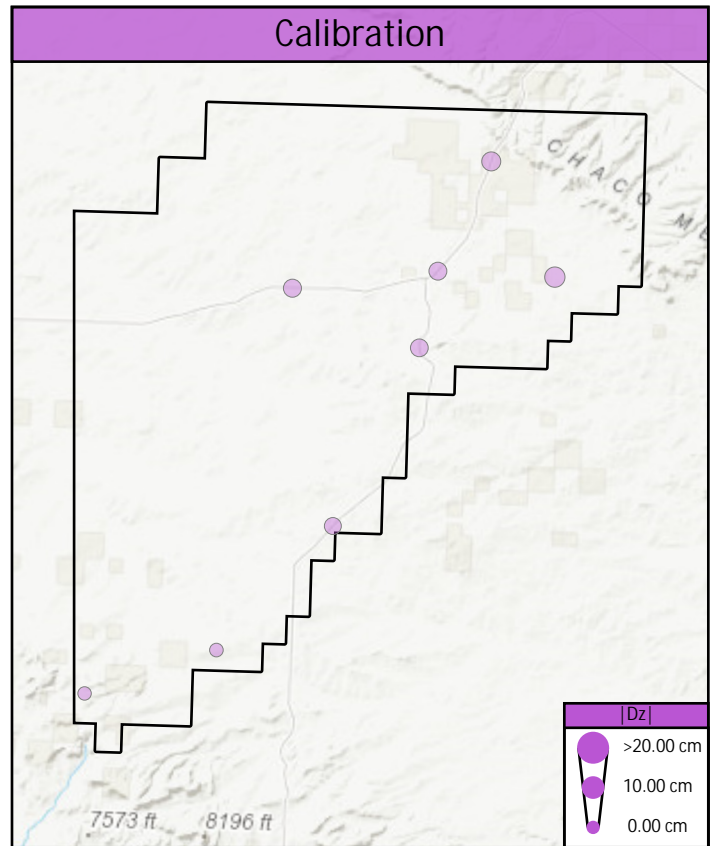
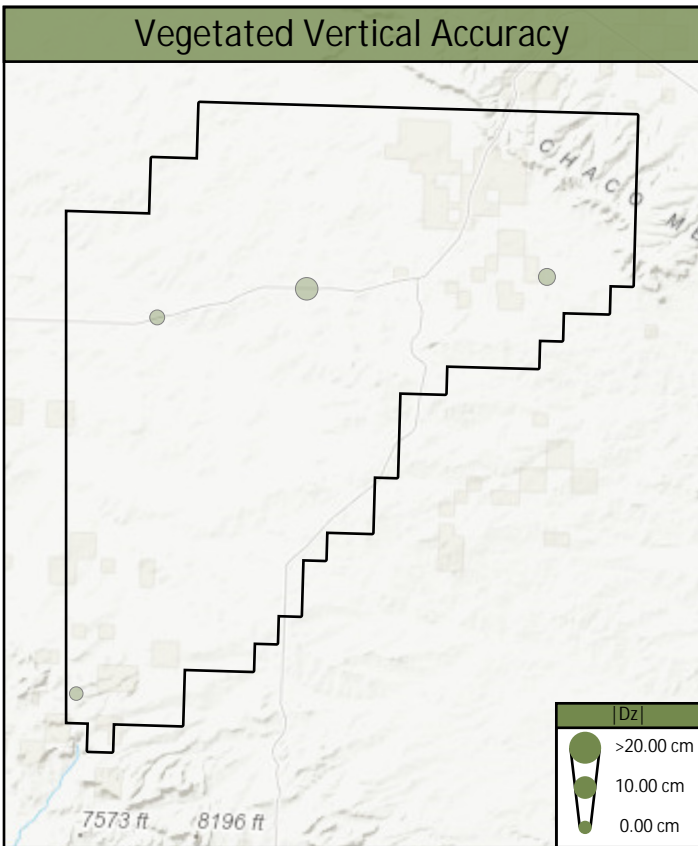
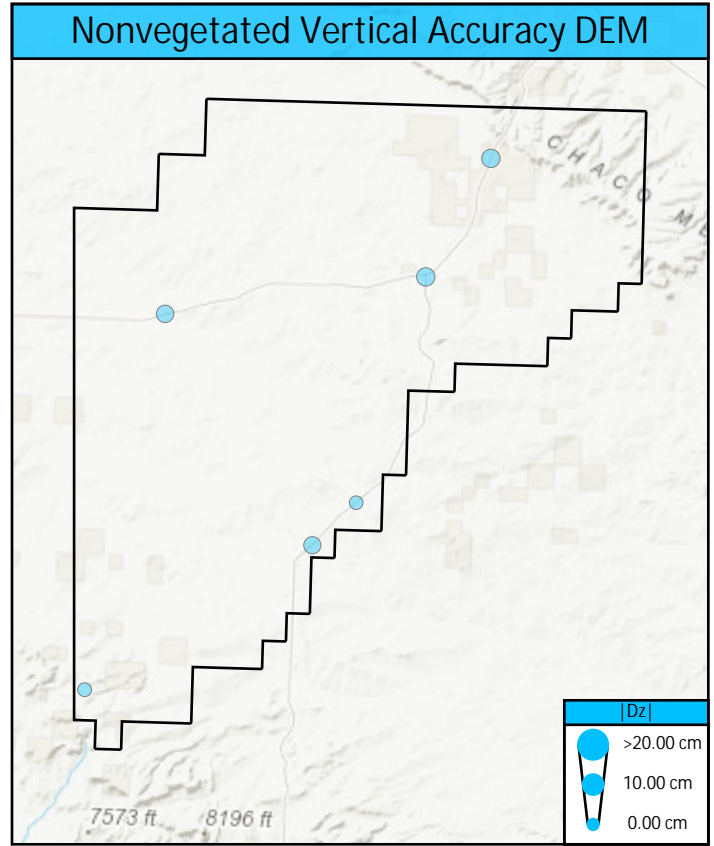
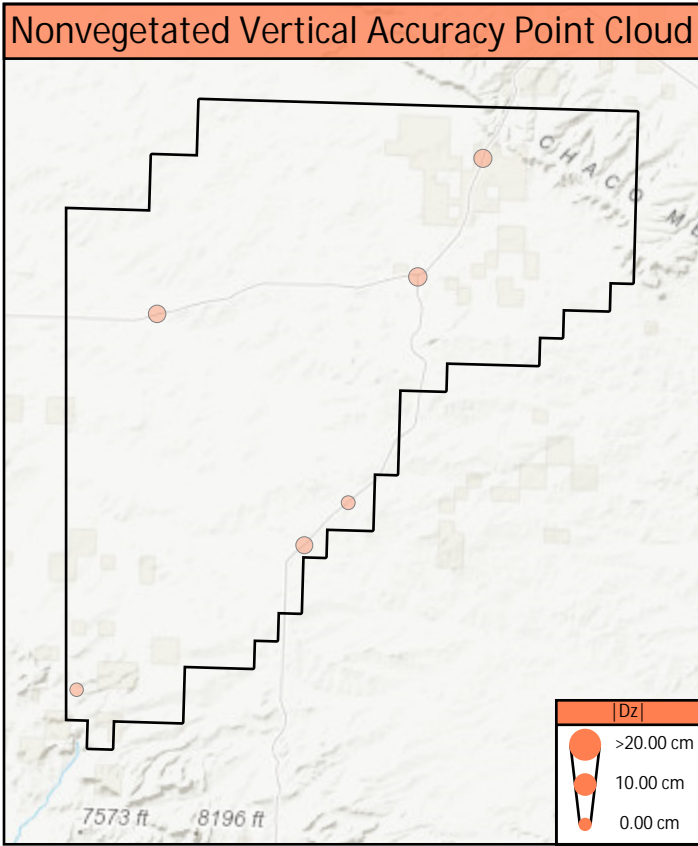
	Observed	Required
RMSE	5.34 cm	N/A
95th Percentile	8.92 cm	29.40 cm
Mean	-2.95 cm	N/A
Count	4	N/A

Calibration (Point Cloud)



	Observed	Required
RMSE	4.72 cm	N/A
Mean	-3.95 cm	N/A
Count	8	N/A

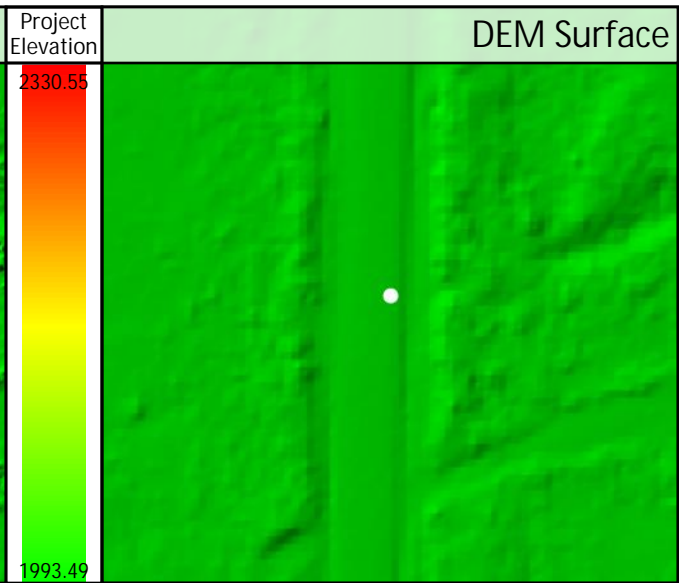
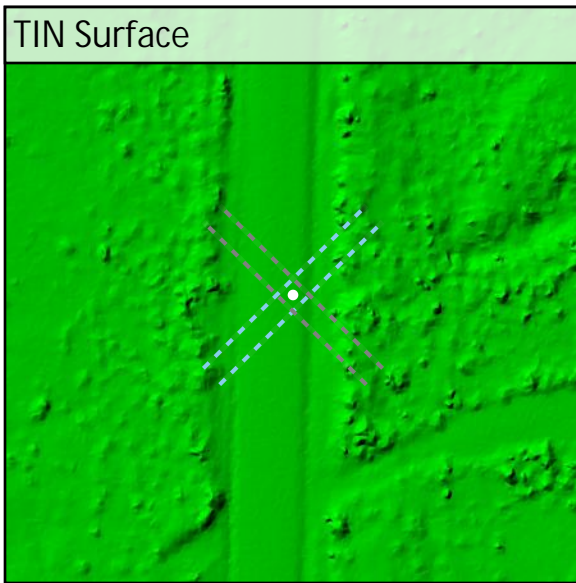
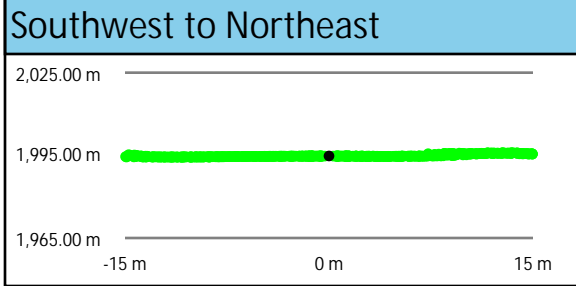
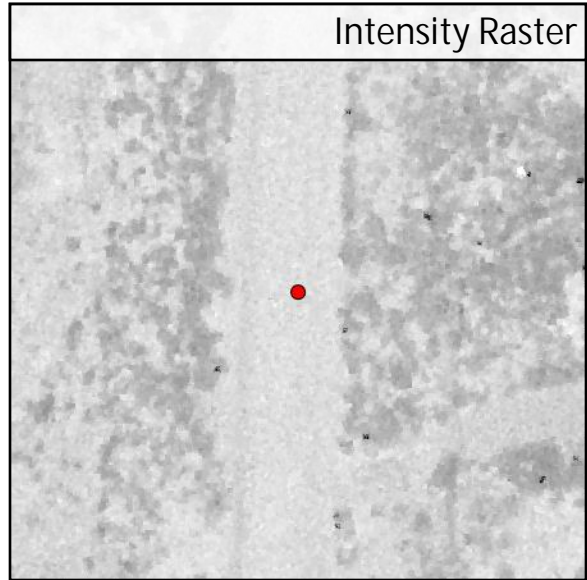
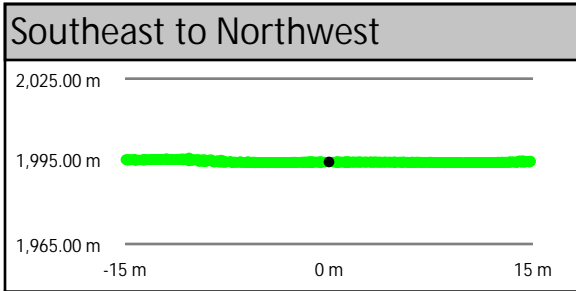
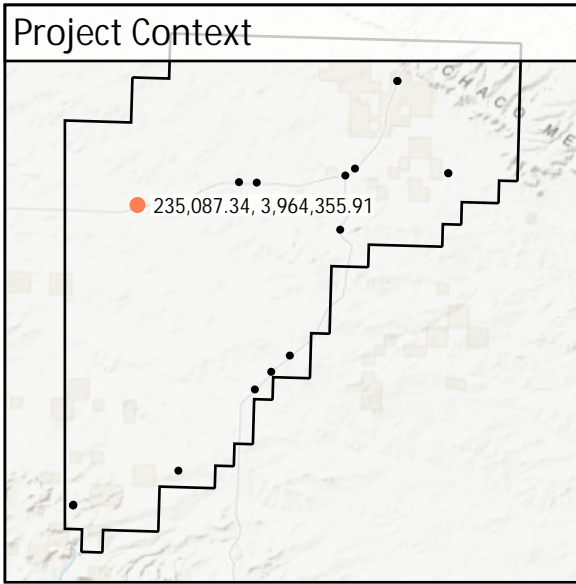
Control Point Locations



Control Point Breakdown

Point	Type	All Points TIN Dz	DEM Dz	Ground Density	Nearest Ground	Slope
BE013	NVA	-4.46 cm	-4.41 cm	5.23 ppsm	0.31 m	0.74°
BE083	NVA	-5.10 cm	-5.37 cm	2.86 ppsm	0.15 m	3.49°
BE119	NVA	-3.90 cm	-4.12 cm	2.65 ppsm	0.12 m	1.84°
BE145	NVA	-5.39 cm	-5.40 cm	3.08 ppsm	0.29 m	4.13°
BE170	NVA	0.16 cm	0.56 cm	2.94 ppsm	0.16 m	2.63°
BE222	NVA	-0.54 cm	-0.26 cm	2.55 ppsm	0.40 m	6.46°
FR005	VVA	N/A	0.23 cm	7.14 ppsm	0.13 m	3.32°
SH069	VVA	N/A	1.65 cm	5.20 ppsm	0.54 m	9.72°
TW007	VVA	N/A	-3.89 cm	4.67 ppsm	0.32 m	2.62°
TW032	VVA	N/A	-9.81 cm	4.24 ppsm	0.59 m	1.51°
CA036	CAL	-7.44 cm	-6.82 cm	4.77 ppsm	0.30 m	1.54°
CA047	CAL	-5.04 cm	-5.08 cm	2.51 ppsm	0.24 m	1.29°
CA053	CAL	0.11 cm	0.76 cm	2.94 ppsm	0.12 m	1.79°
CA085	CAL	0.30 cm	0.44 cm	3.01 ppsm	0.23 m	0.98°
CA134	CAL	-6.04 cm	-5.74 cm	2.94 ppsm	0.30 m	2.74°
CA144	CAL	-4.73 cm	-4.56 cm	2.90 ppsm	0.27 m	1.17°
CA217	CAL	-3.87 cm	-3.89 cm	3.04 ppsm	0.17 m	1.44°
CA259	CAL	-4.86 cm	-4.97 cm	3.40 ppsm	0.19 m	2.52°

BE013	Known Z	1,994.77 m	Point Density	5.23 ppsm
	DEM Dz	-0.04 m	Ground Density	5.23 ppsm
	All Points TIN Dz	-0.04 m	Slope	0.74 °

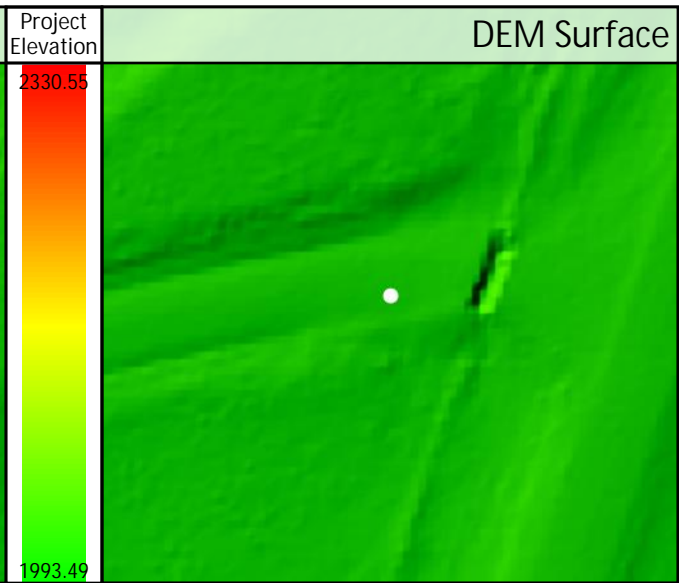
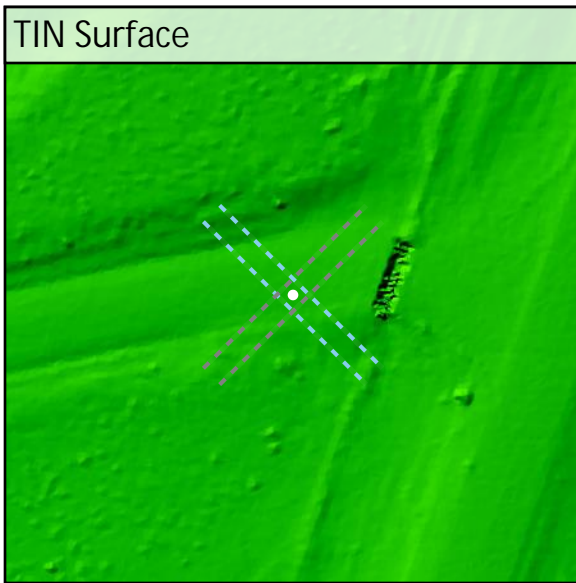
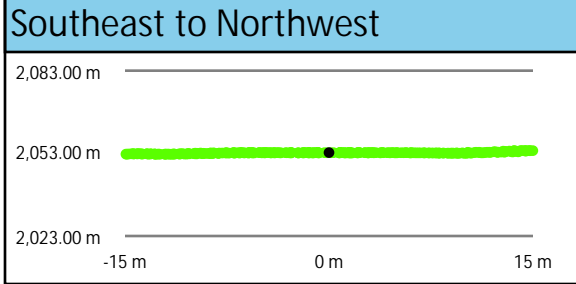
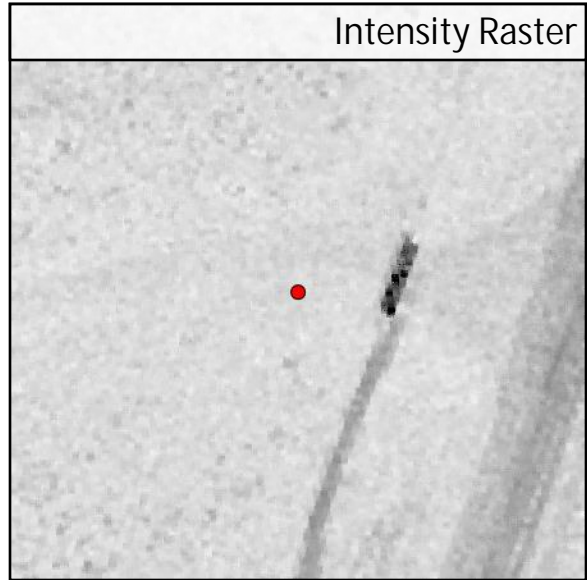
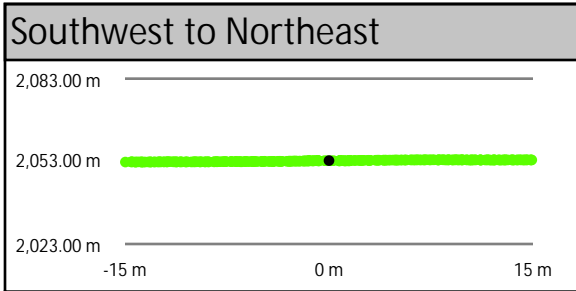
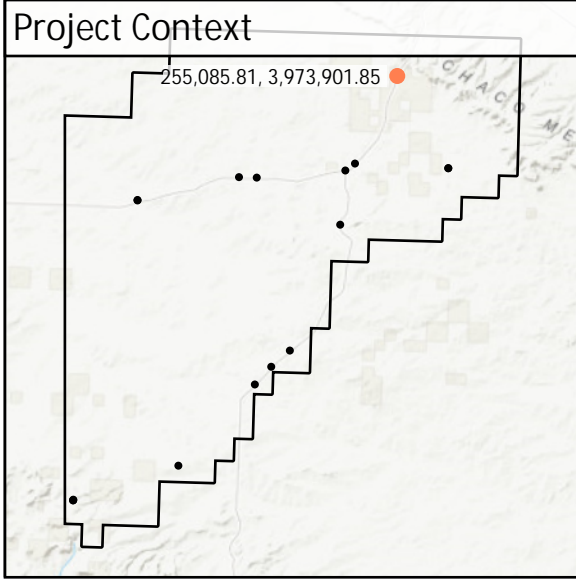


DEM Dz -0.04 m

NVA - BE013

All Points TIN Dz -0.04 m

BE083	Known Z	2,053.27 m	Point Density	2.86 ppsm
	DEM Dz	-0.05 m	Ground Density	2.86 ppsm
	All Points TIN Dz	-0.05 m	Slope	3.49 °

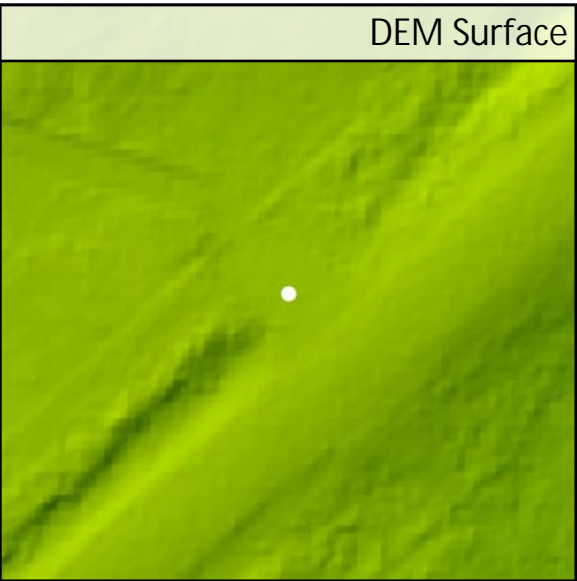
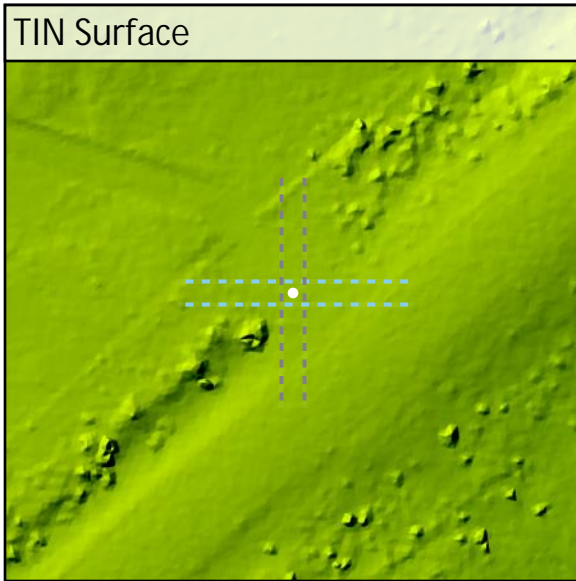
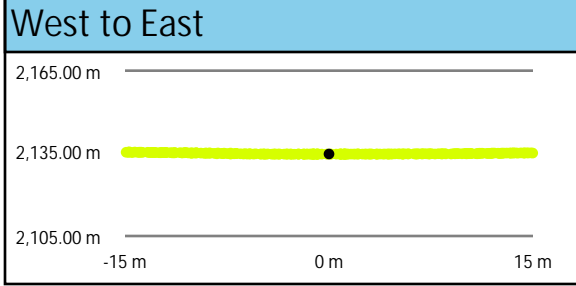
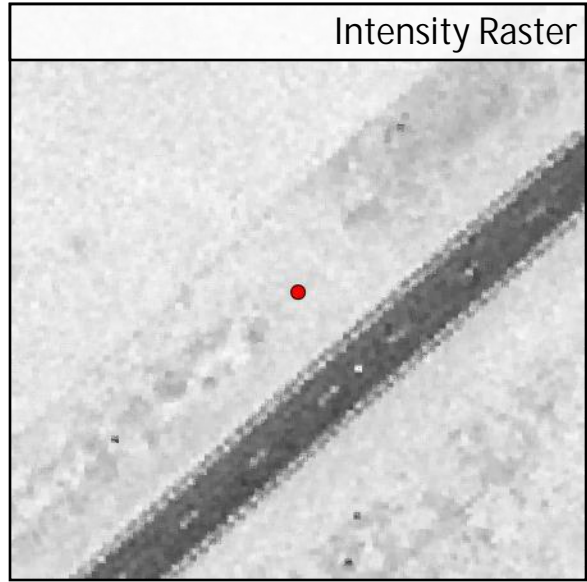
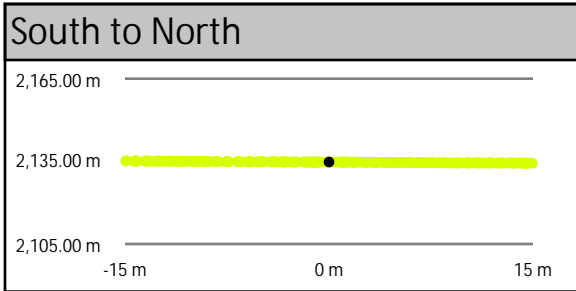
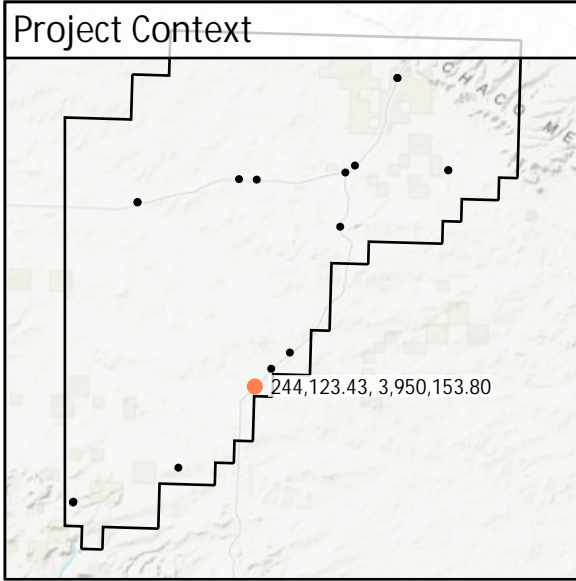


DEM Dz -0.05 m

NVA - BE083

All Points TIN Dz -0.05 m

BE119	Known Z	2,134.76 m	Point Density	2.65 ppsm
	DEM Dz	-0.04 m	Ground Density	2.65 ppsm
	All Points TIN Dz	-0.04 m	Slope	1.84 °

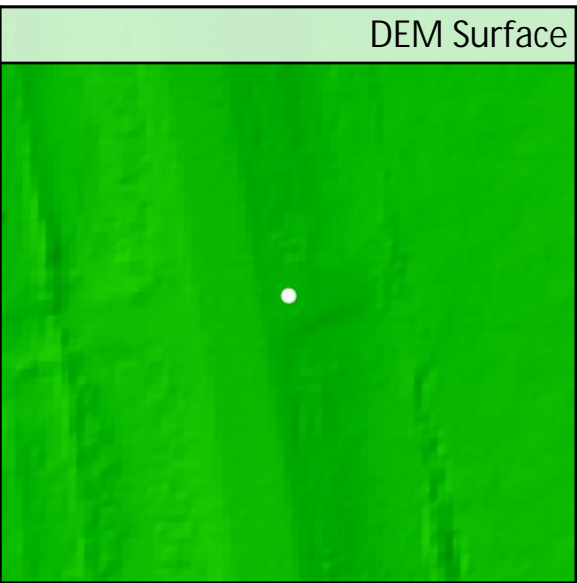
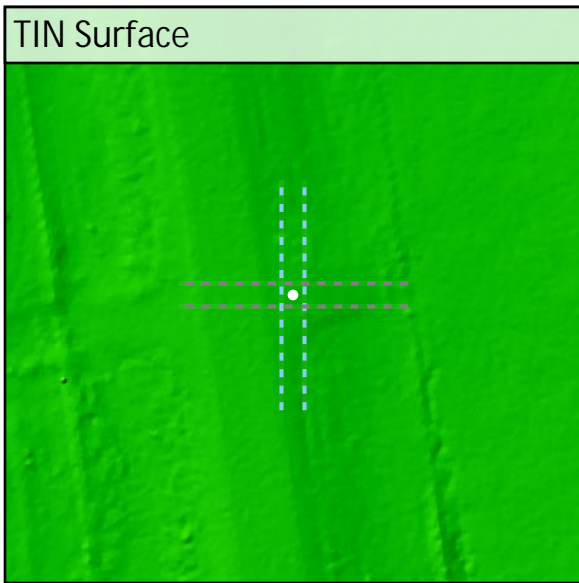
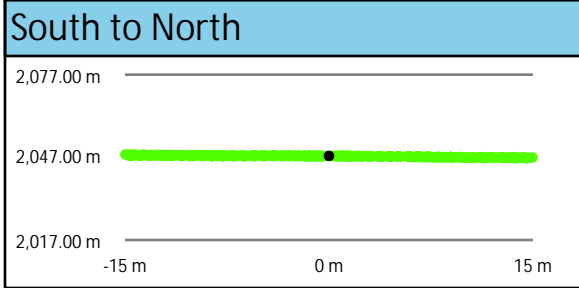
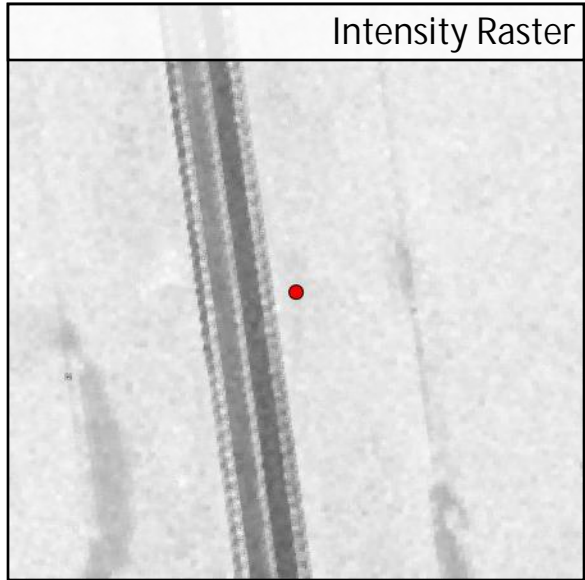
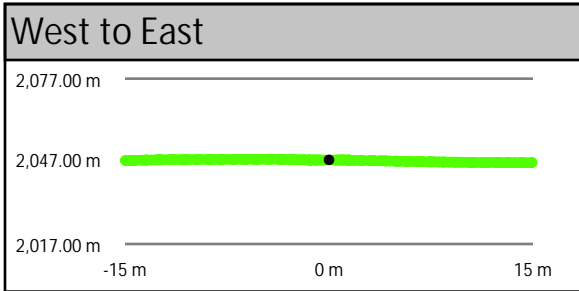
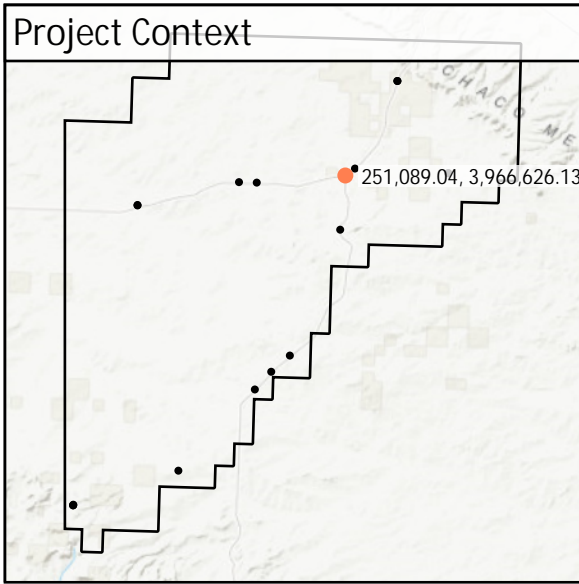


DEM Dz -0.04 m

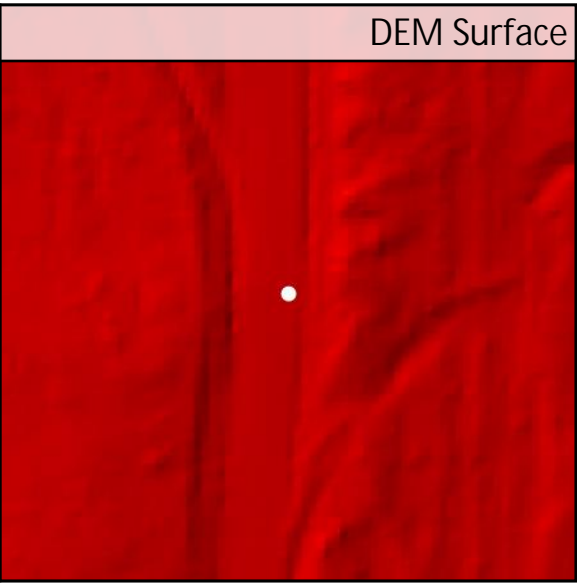
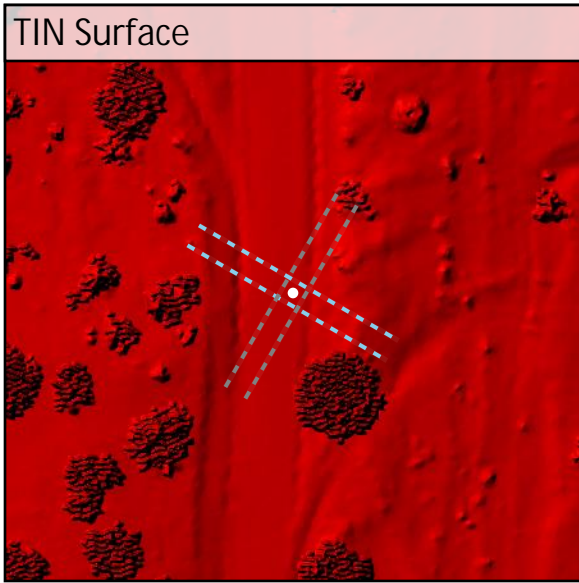
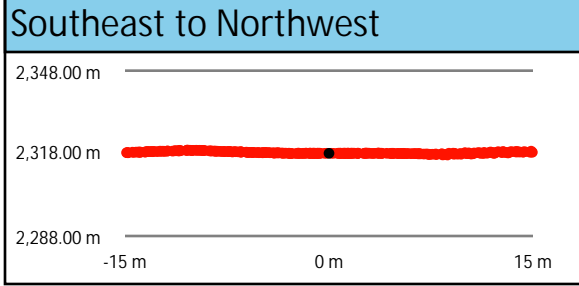
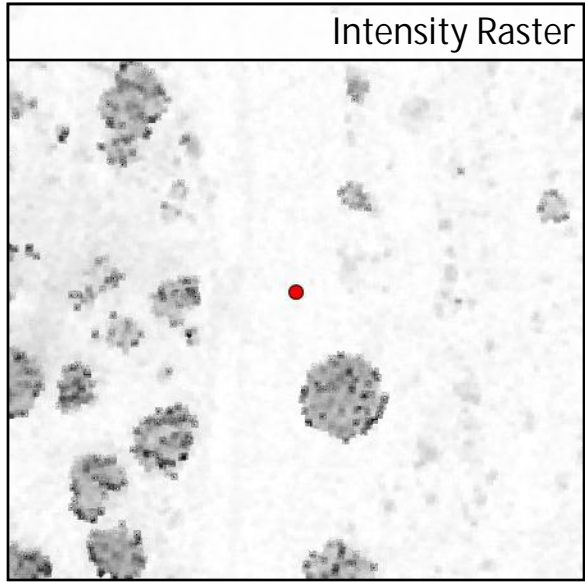
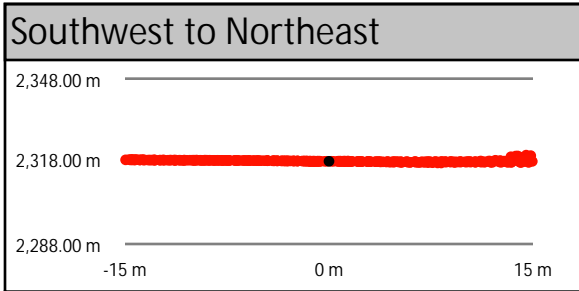
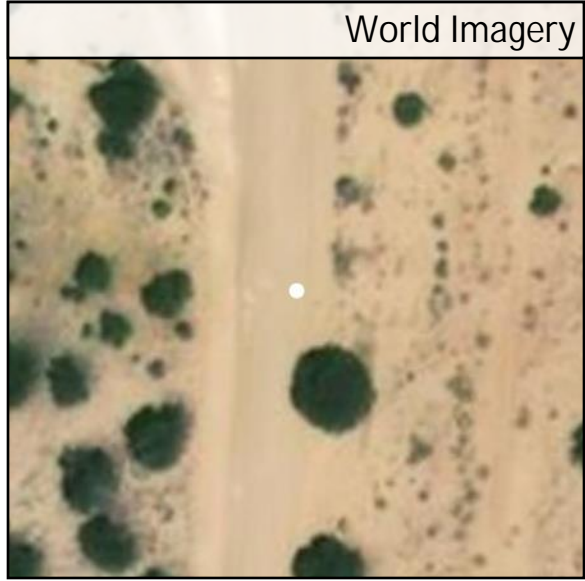
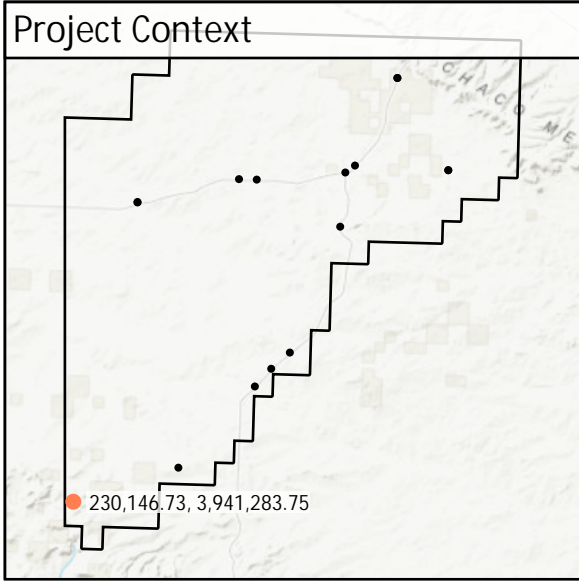
NVA - BE119

All Points TIN Dz -0.04 m

BE145	Known Z	2,047.52 m	Point Density	3.08 ppsm
	DEM Dz	-0.05 m	Ground Density	3.08 ppsm
	All Points TIN Dz	-0.05 m	Slope	4.13 °



BE170	Known Z	2,318.01 m	Point Density	2.94 ppsm
	DEM Dz	0.01 m	Ground Density	2.94 ppsm
	All Points TIN Dz	0.00 m	Slope	2.63 °



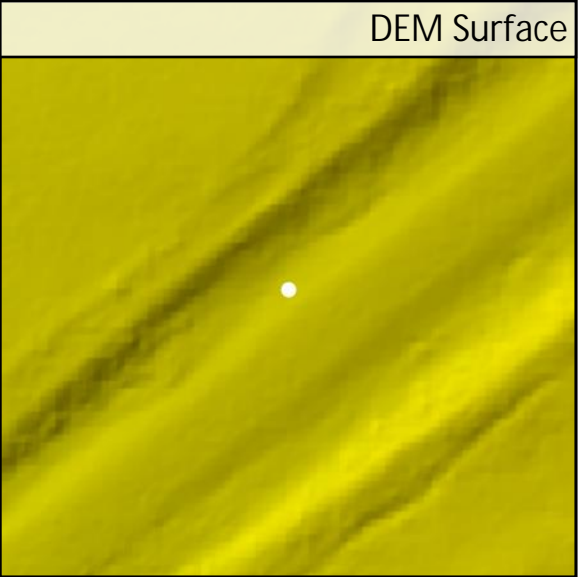
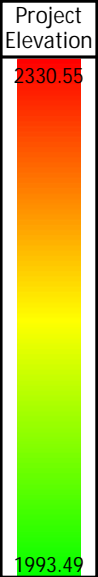
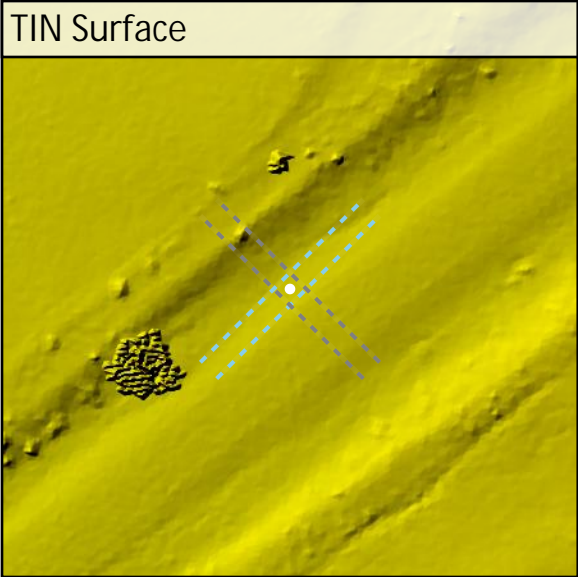
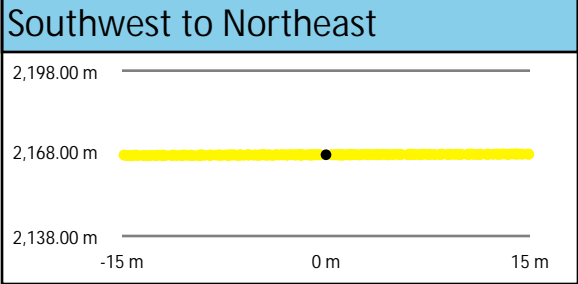
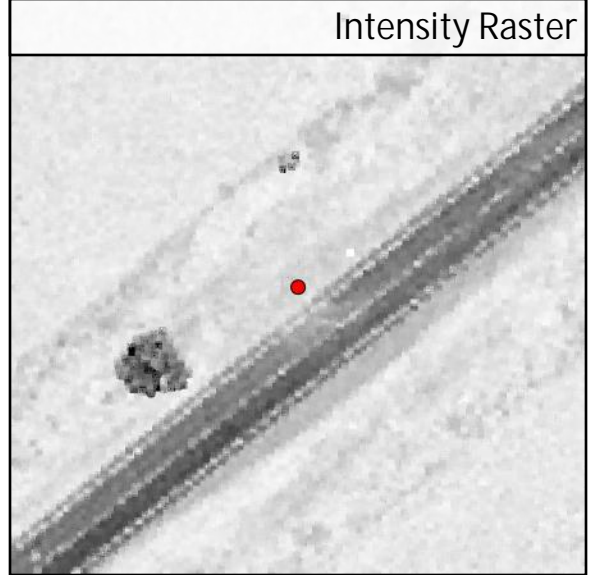
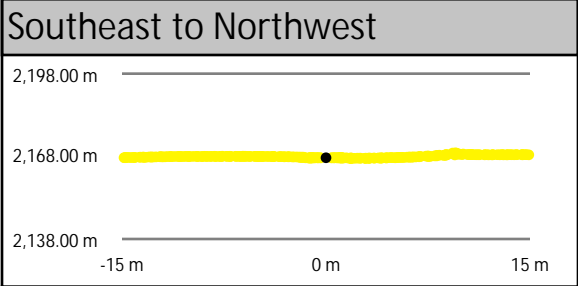
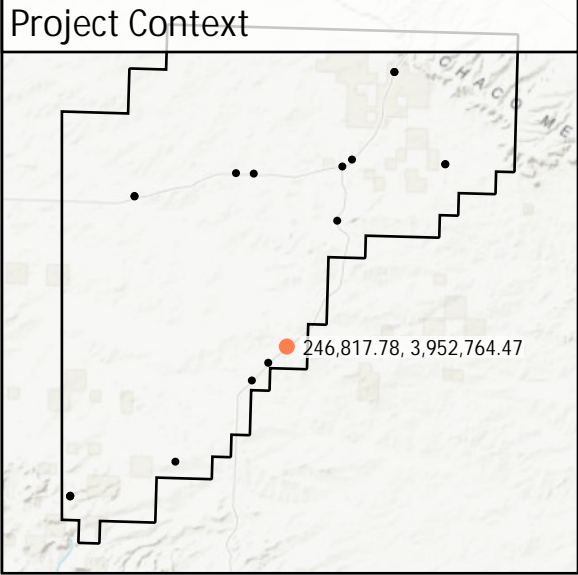
DEM Dz +0.01 m

NVA - BE170

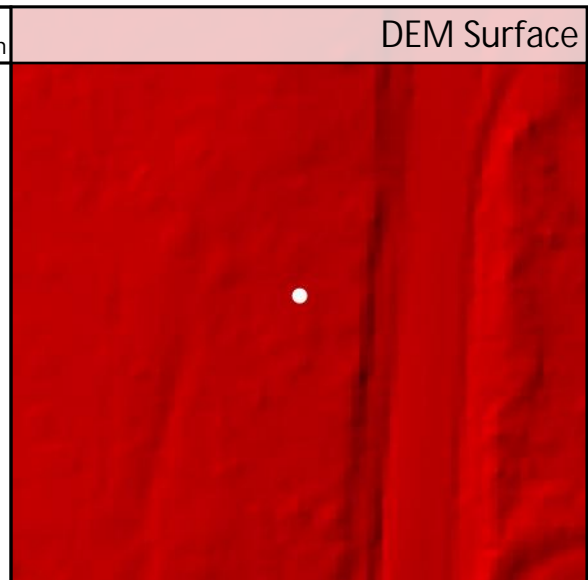
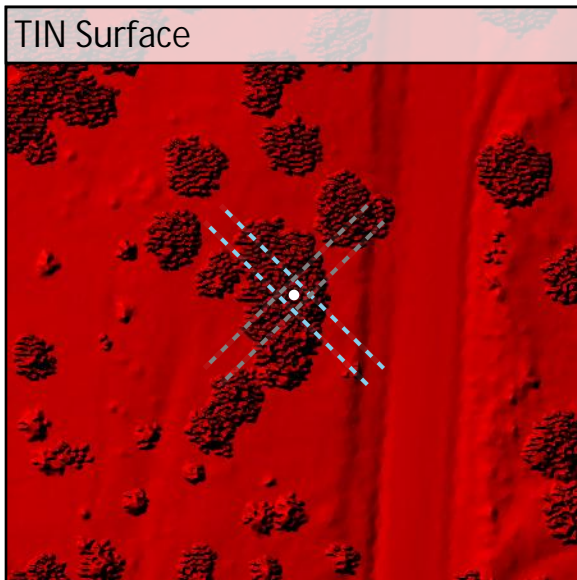
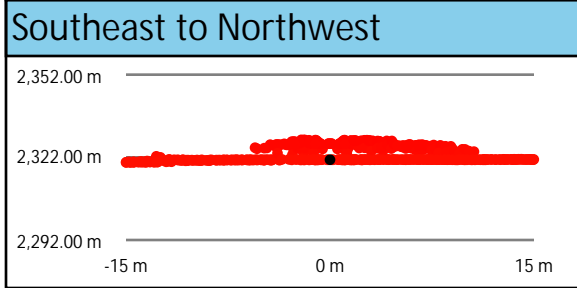
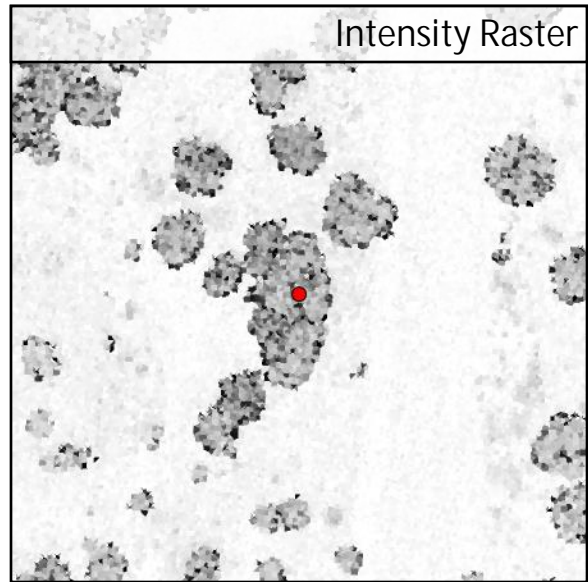
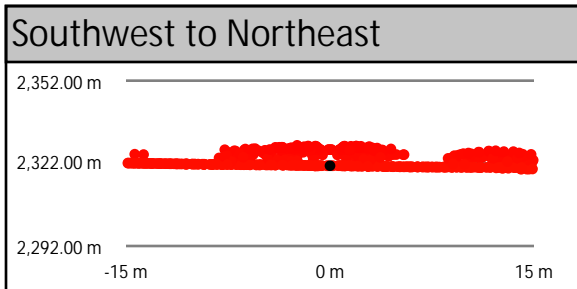
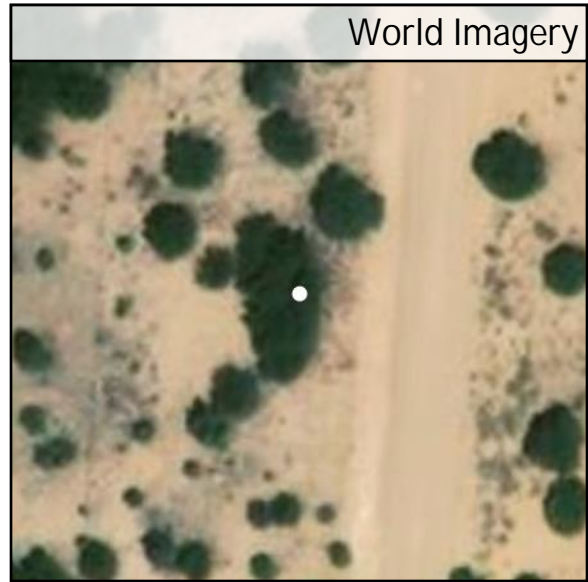
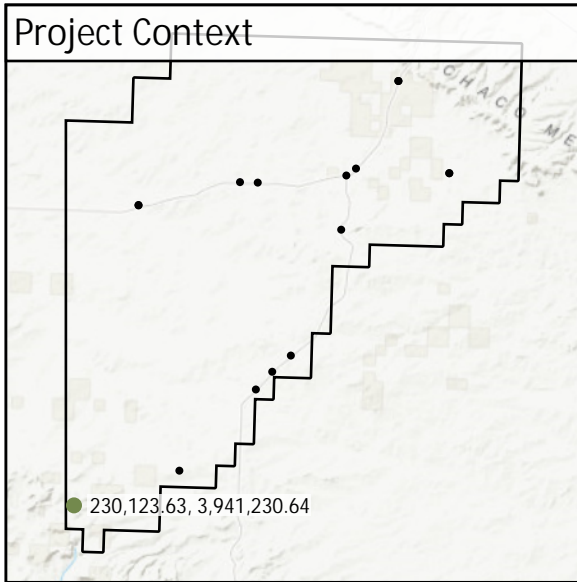
All Points TIN Dz +0.00 m

BE222

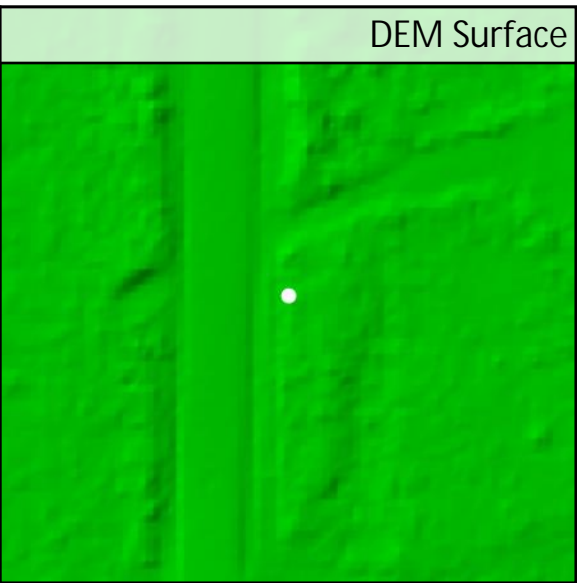
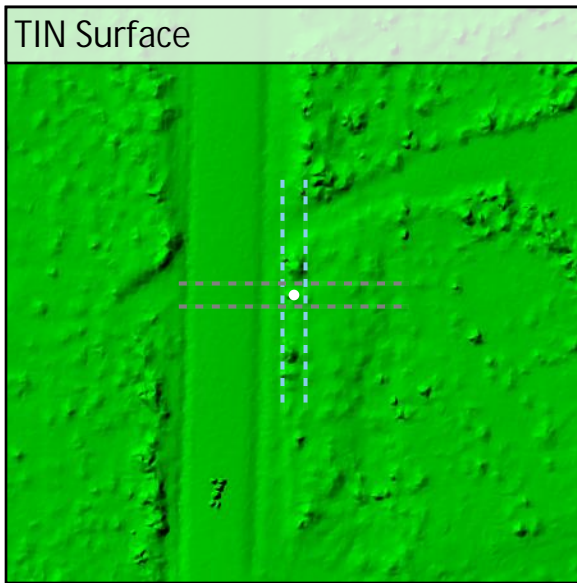
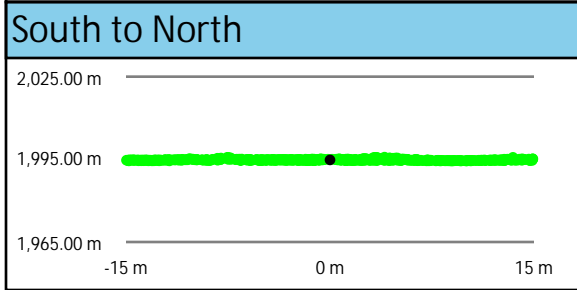
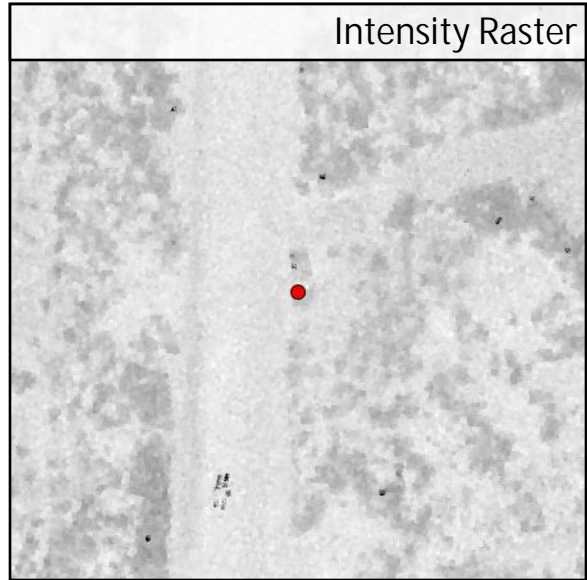
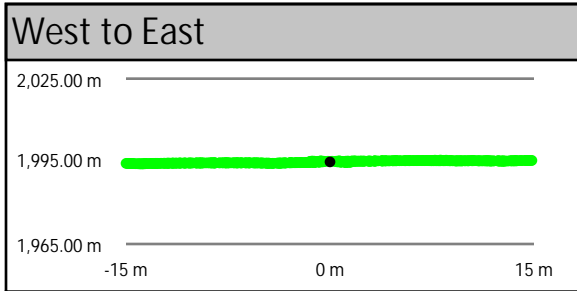
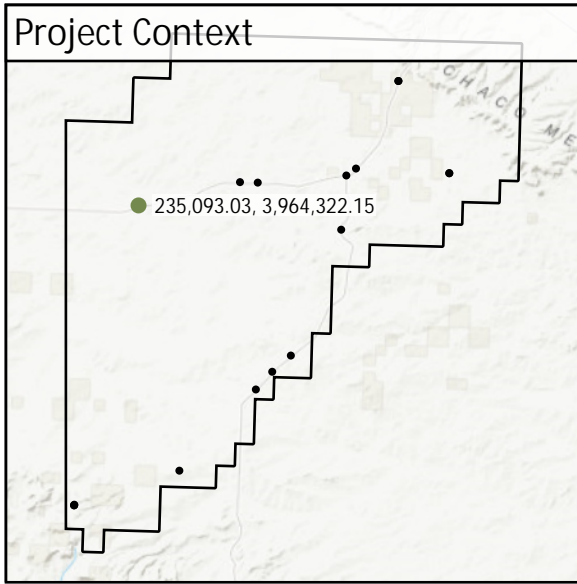
Known Z	2,167.48 m	Point Density	2.55 ppsm
DEM Dz	0.00 m	Ground Density	2.55 ppsm
All Points TIN Dz	-0.01 m	Slope	6.46 °



FR005	Known Z	2,321.12 m	Point Density	3.18 ppsm
	DEM Dz	0.00 m	Ground Density	7.14 ppsm
	All Points TIN Dz	N/A	Slope	3.32 °



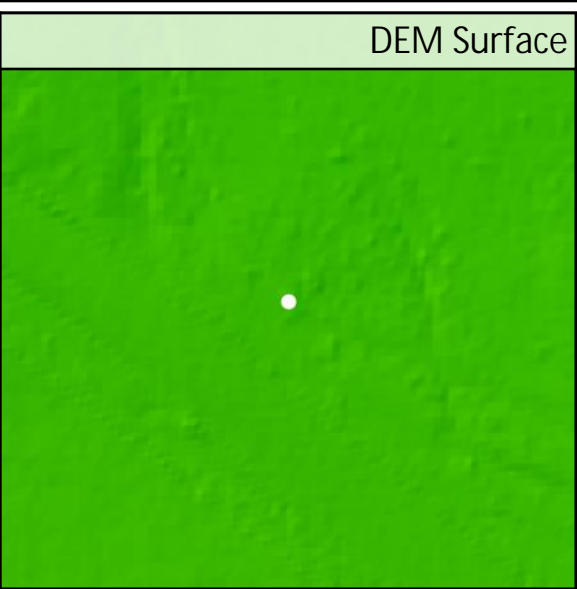
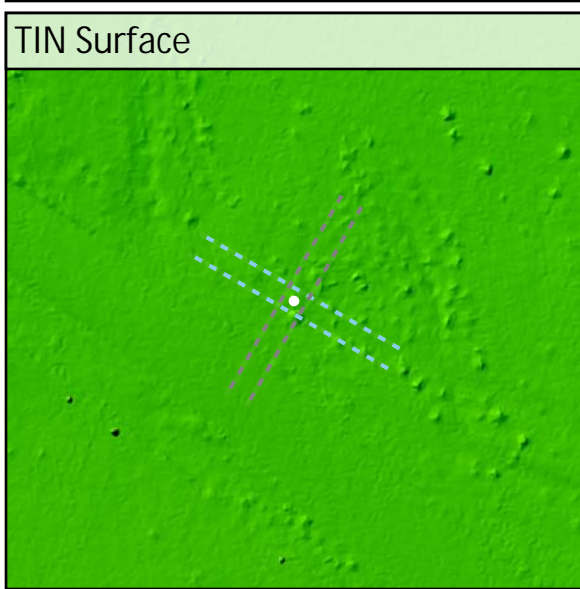
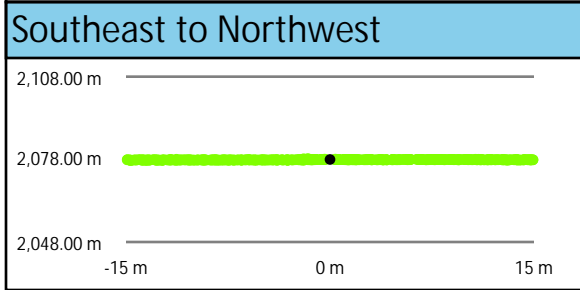
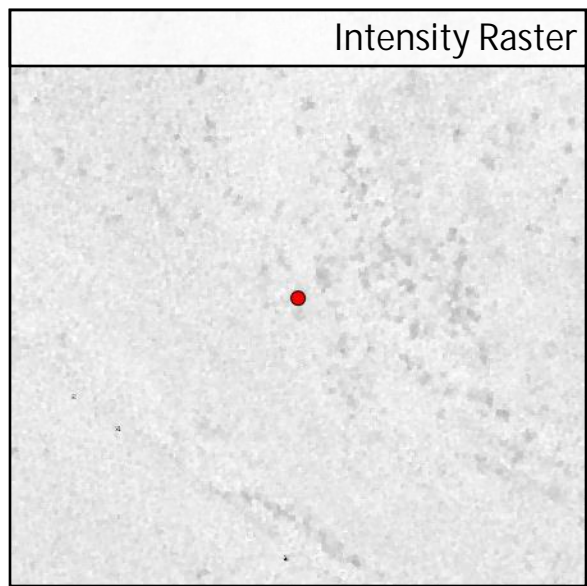
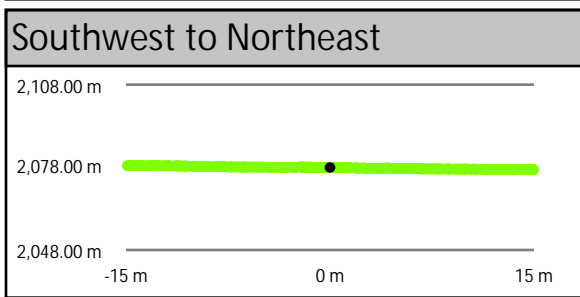
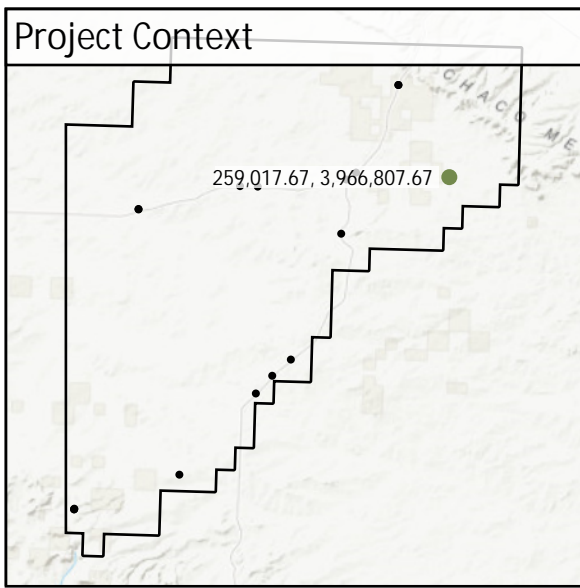
SH069	Known Z	1,994.79 m	Point Density	5.20 ppsm
	DEM Dz	0.02 m	Ground Density	5.20 ppsm
	All Points TIN Dz	N/A	Slope	9.72 °



DEM Dz +0.02 m

VVA - SH069

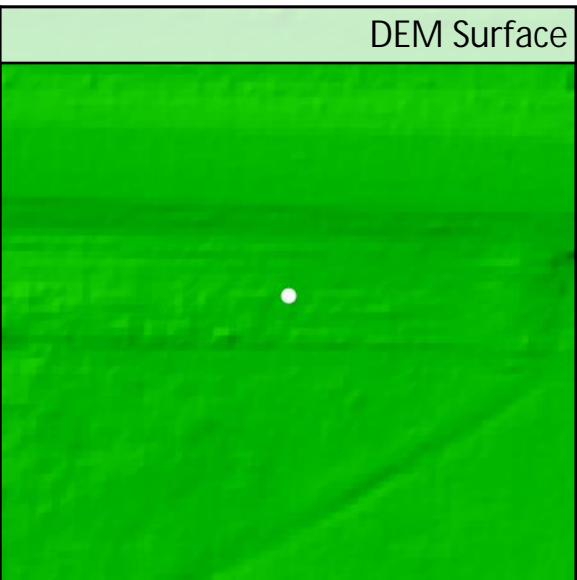
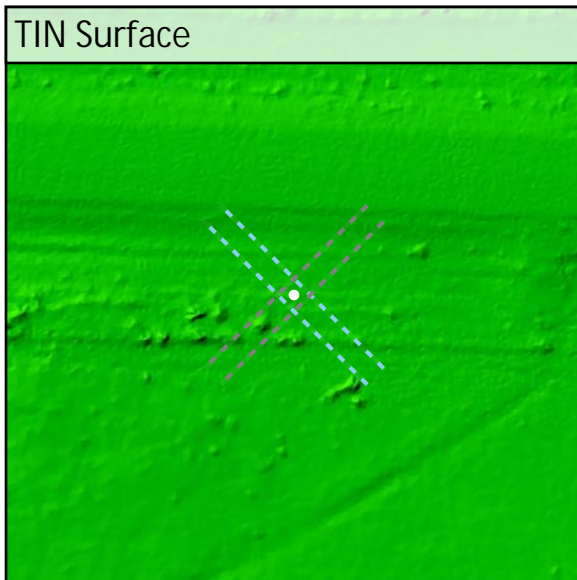
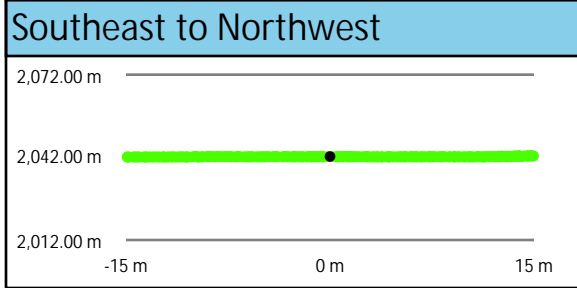
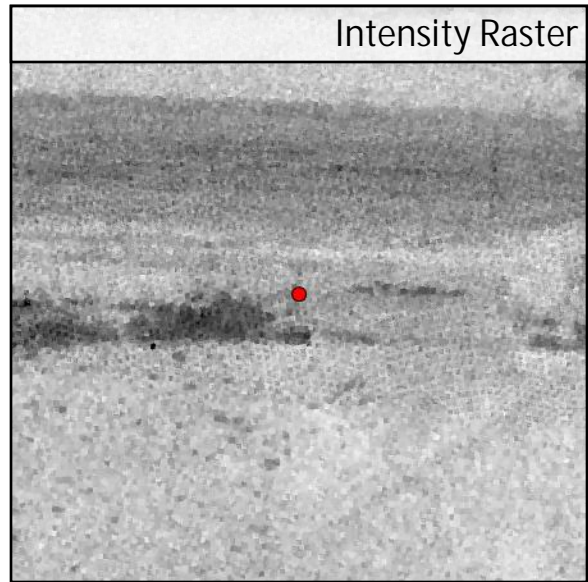
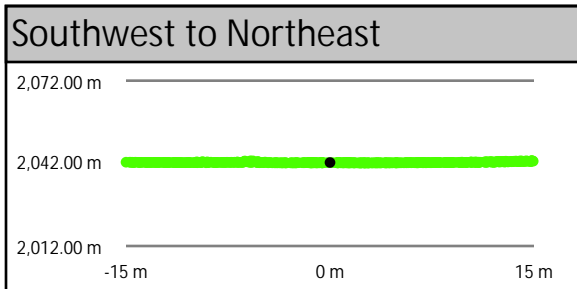
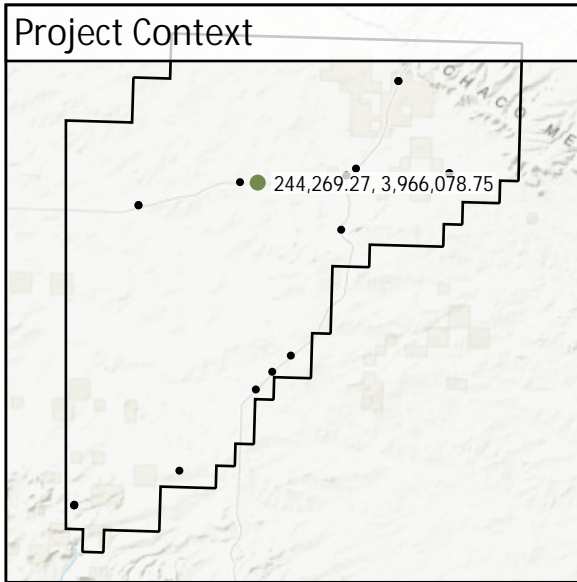
TW007	Known Z	2,077.95 m	Point Density	4.67 ppsm
	DEM Dz	-0.04 m	Ground Density	4.67 ppsm
	All Points TIN Dz	N/A	Slope	2.62 °



DEM Dz -0.04 m

VVA - TW007

TW032	Known Z	2,042.30 m	Point Density	4.24 ppsm
	DEM Dz	-0.10 m	Ground Density	4.24 ppsm
	All Points TIN Dz	N/A	Slope	1.51 °

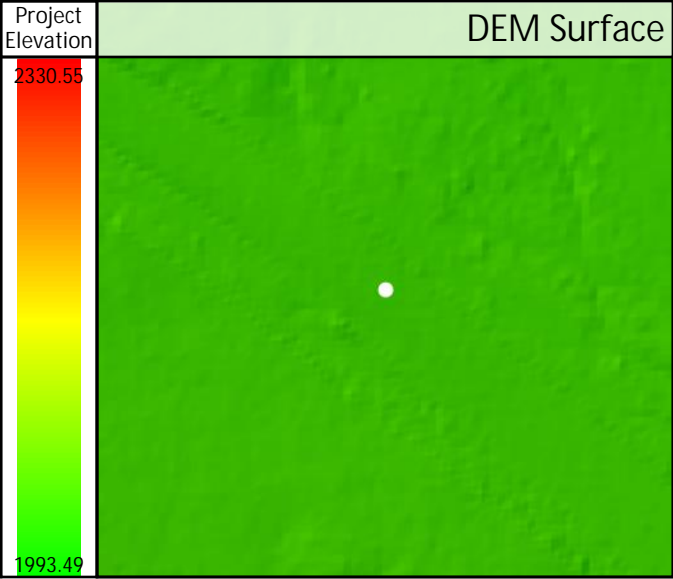
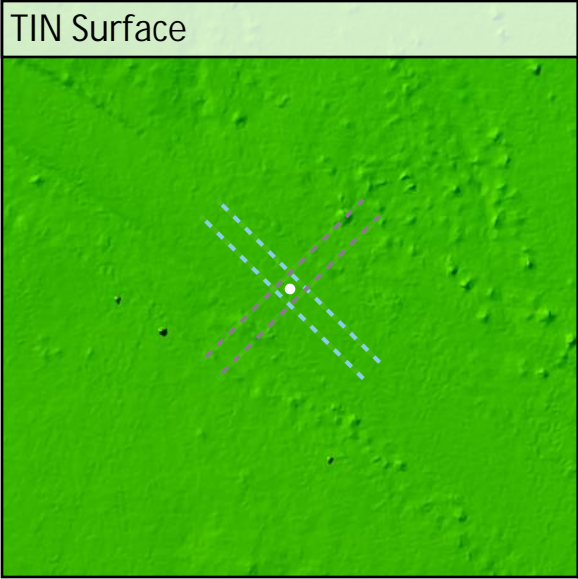
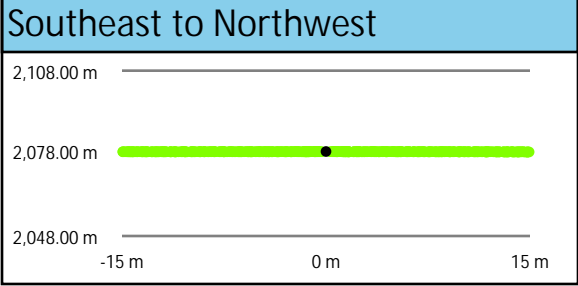
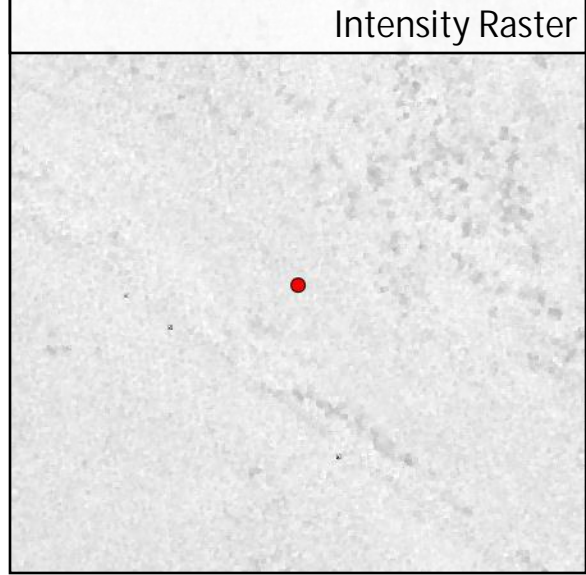
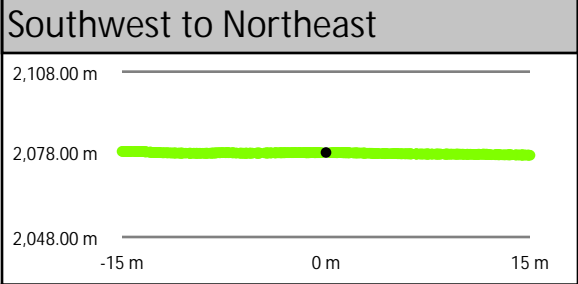
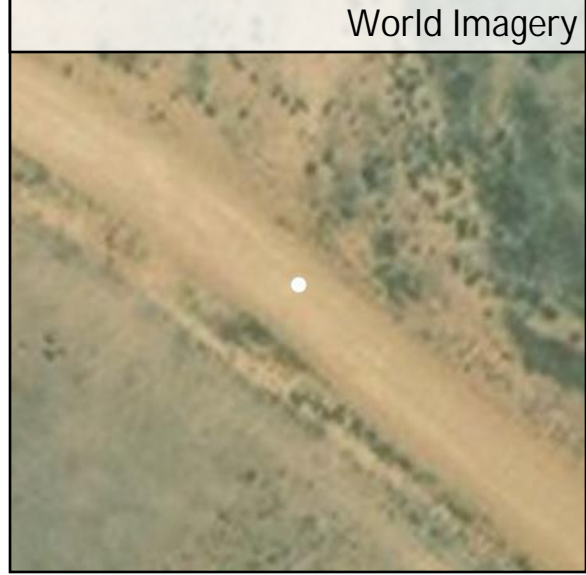
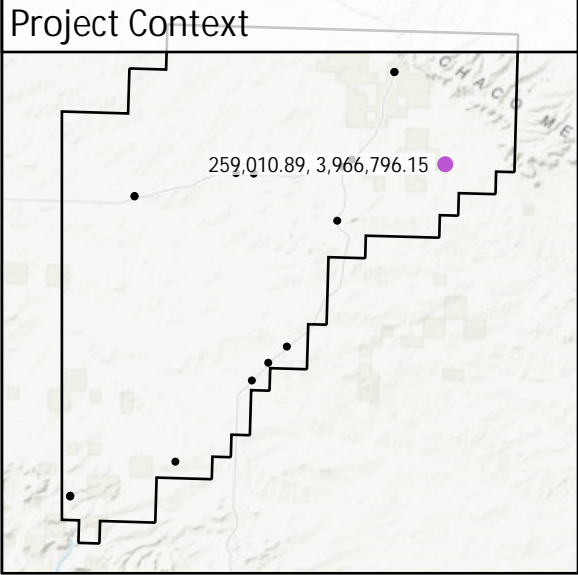


DEM Dz -0.10 m

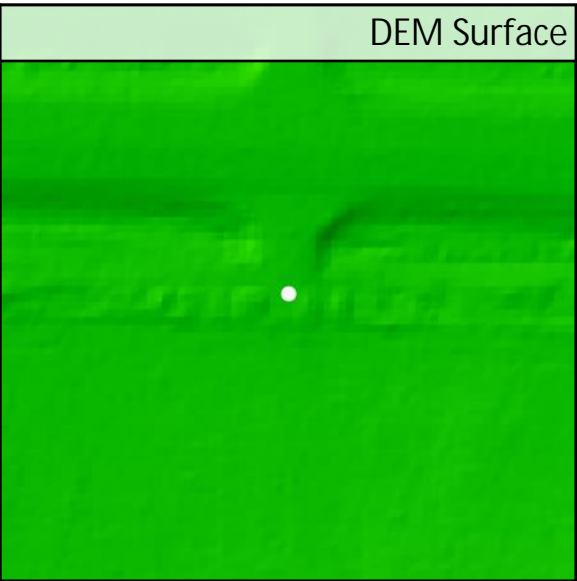
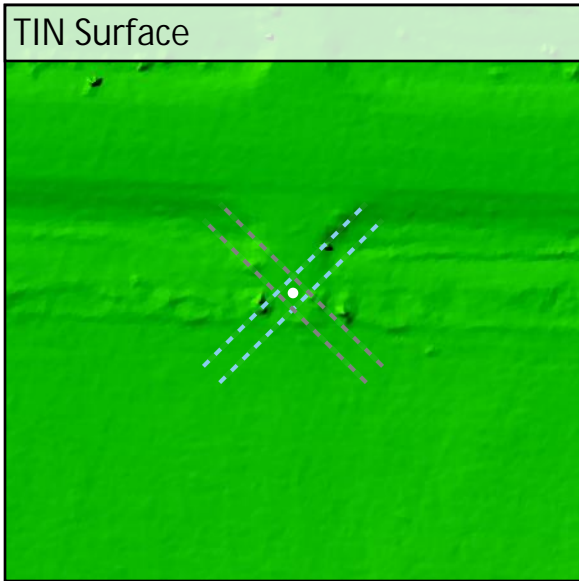
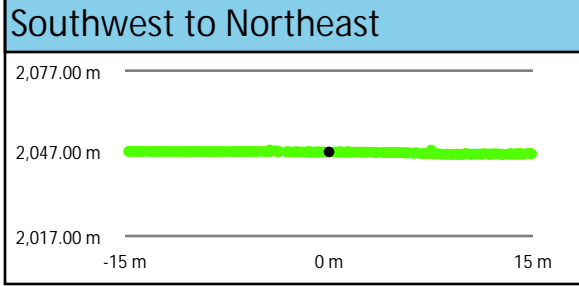
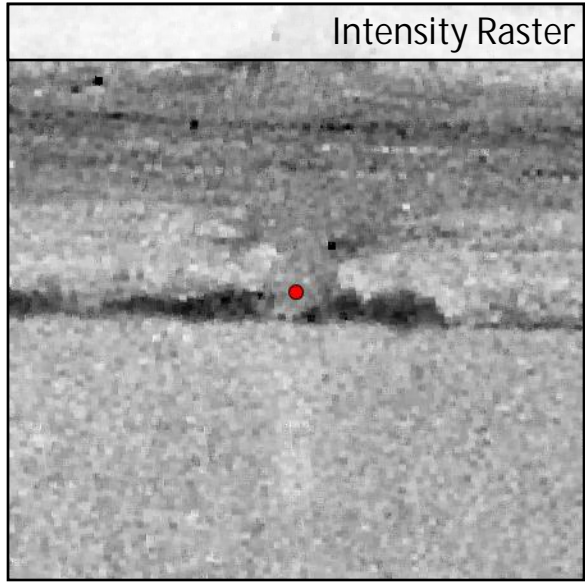
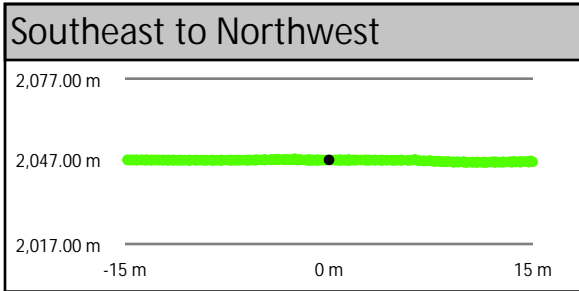
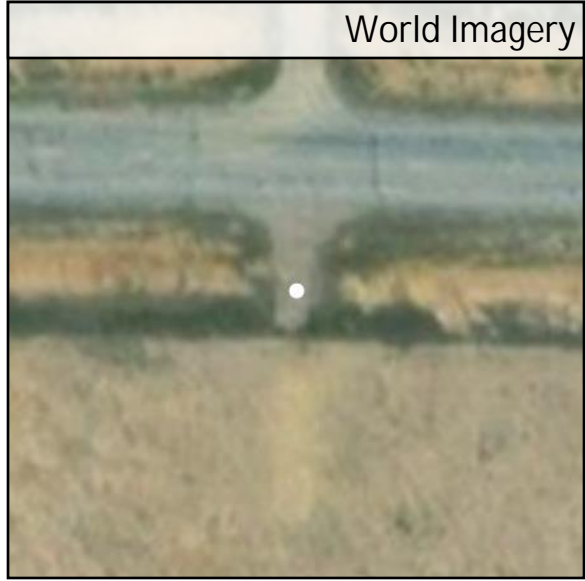
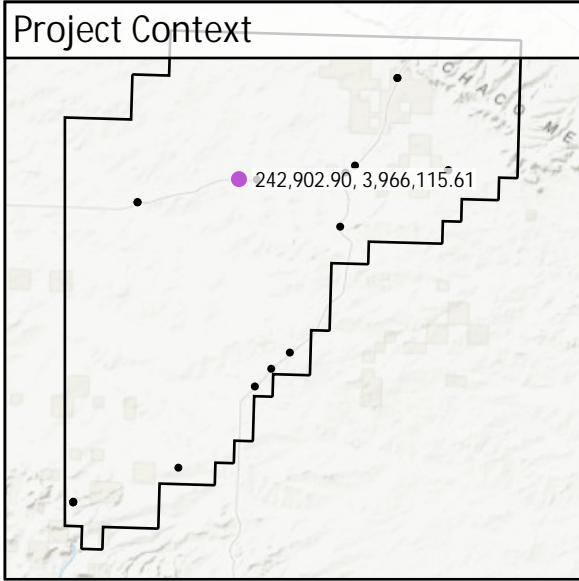
VVA - TW032

CA036

Known Z	2,078.66 m	Point Density	4.77 ppsm
DEM Dz	-0.07 m	Ground Density	4.77 ppsm
All Points TIN Dz	-0.07 m	Slope	1.54 °



CA047	Known Z	2,047.51 m	Point Density	2.51 ppsm
	DEM Dz	-0.05 m	Ground Density	2.51 ppsm
	All Points TIN Dz	-0.05 m	Slope	1.29°

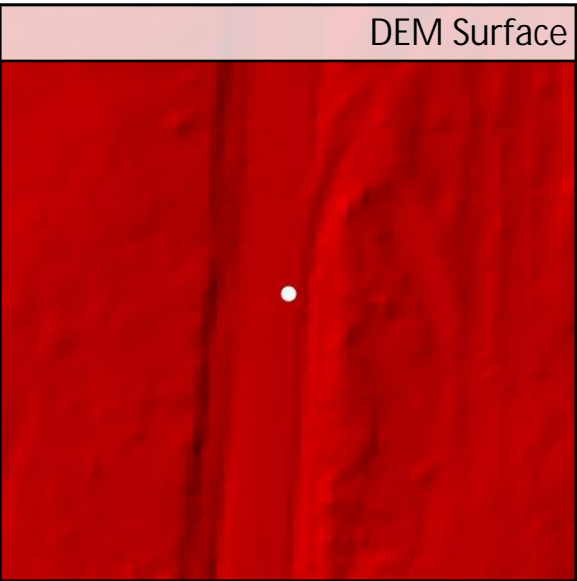
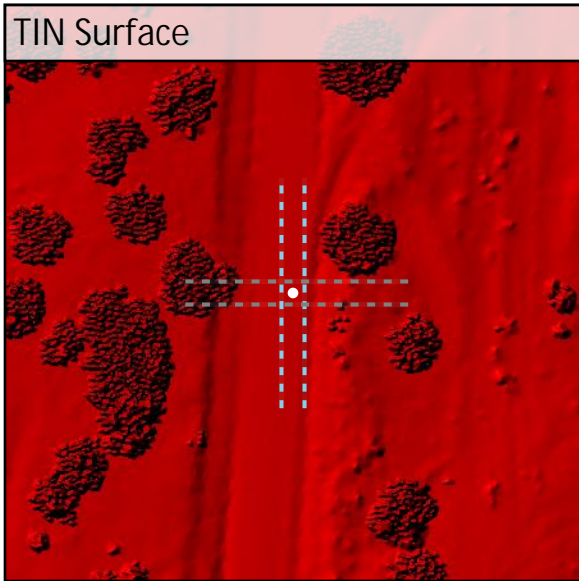
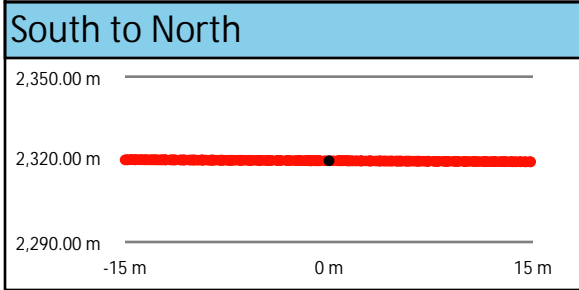
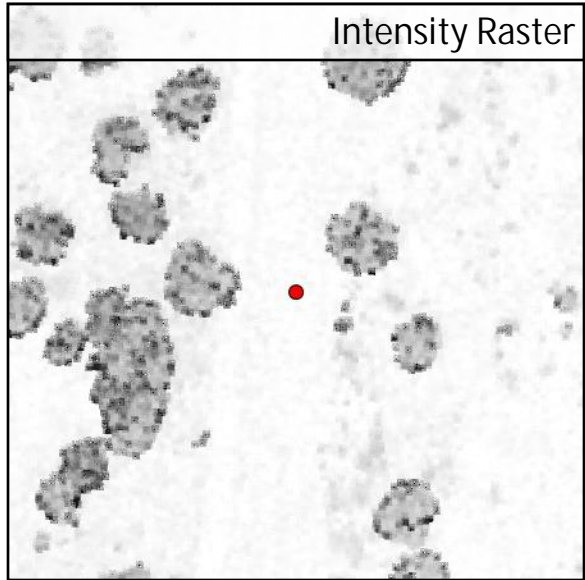
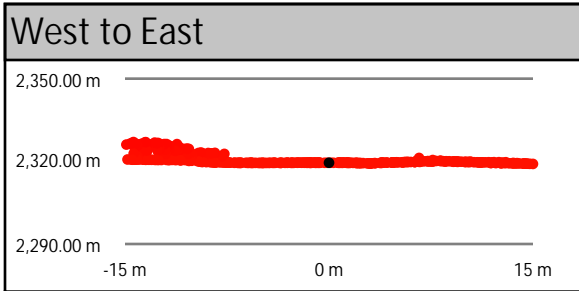
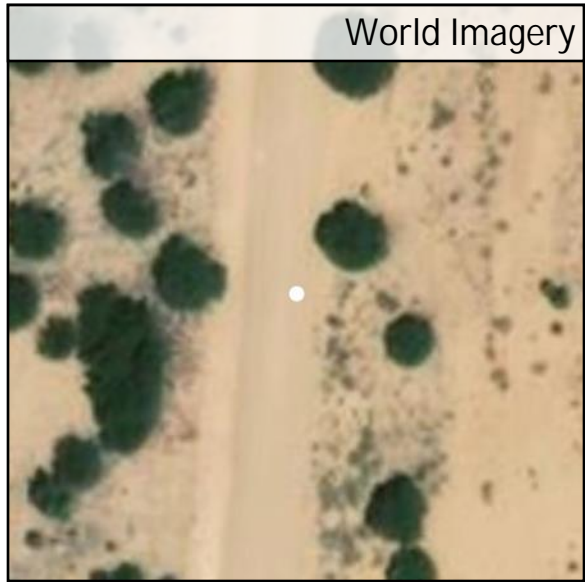
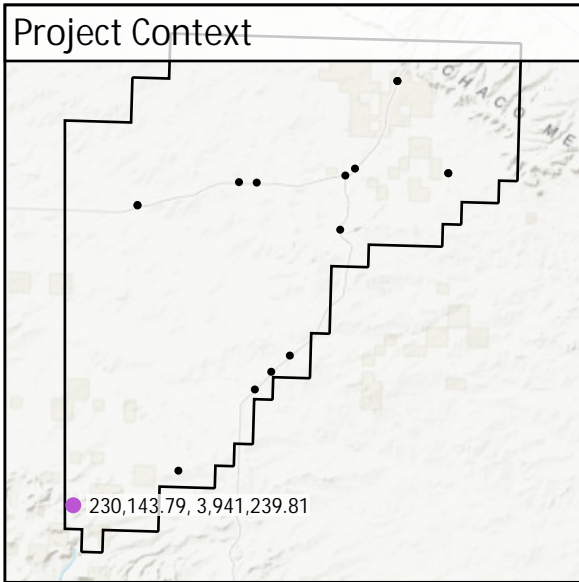


DEM Dz -0.05 m

CAL - CA047

All Points TIN Dz -0.05 m

CA053	Known Z	2,319.48 m	Point Density	2.94 ppsm
	DEM Dz	0.01 m	Ground Density	2.94 ppsm
	All Points TIN Dz	0.00 m	Slope	1.79 °

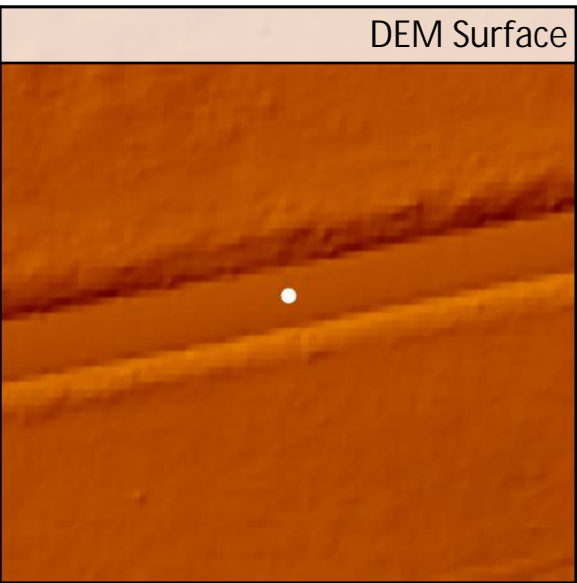
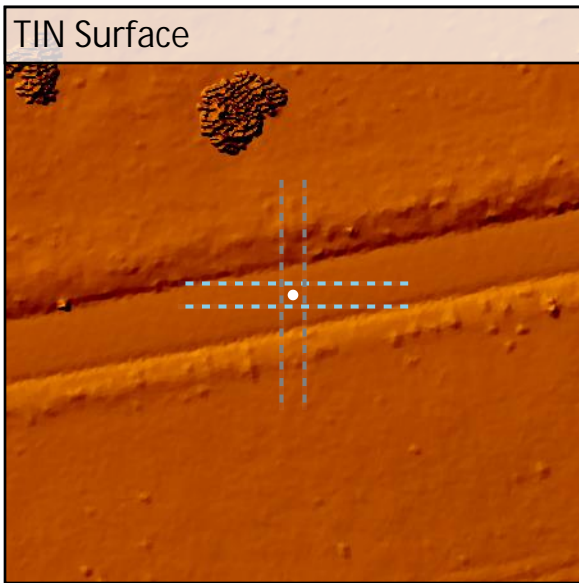
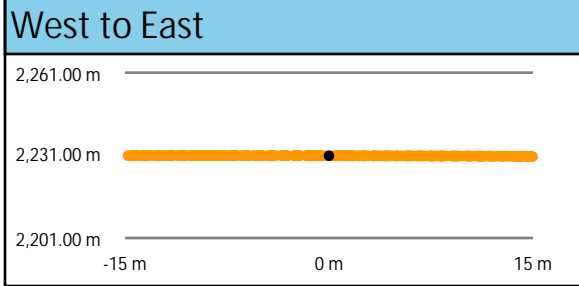
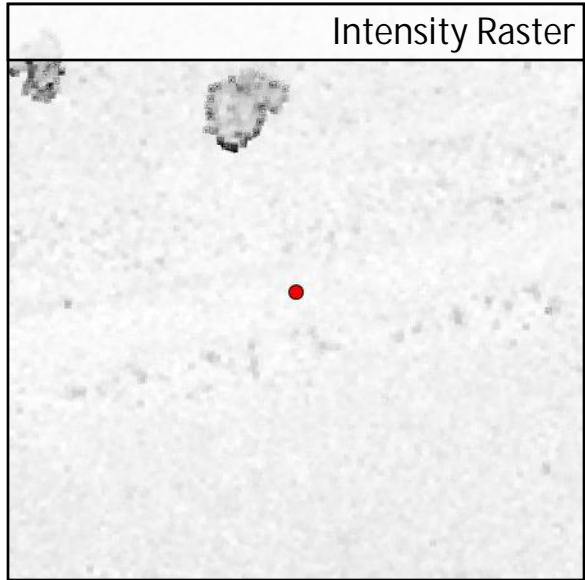
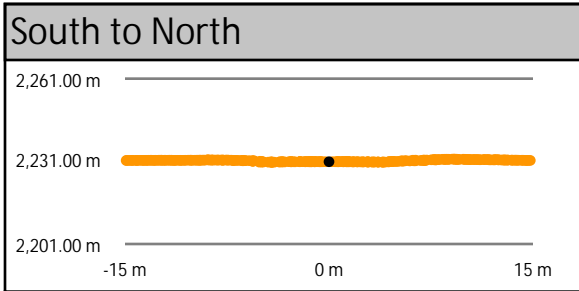
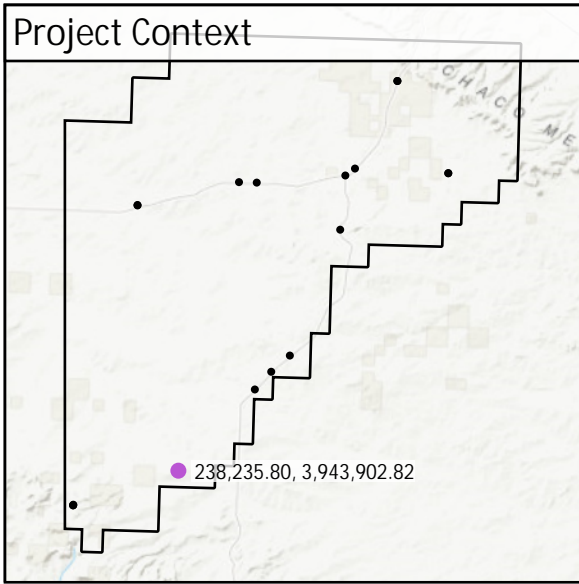


DEM Dz +0.01 m

CAL - CA053

All Points TIN Dz +0.00 m

CA085	Known Z	2,230.85 m	Point Density	3.01 ppsm
	DEM Dz	0.00 m	Ground Density	3.01 ppsm
	All Points TIN Dz	0.00 m	Slope	0.98 °



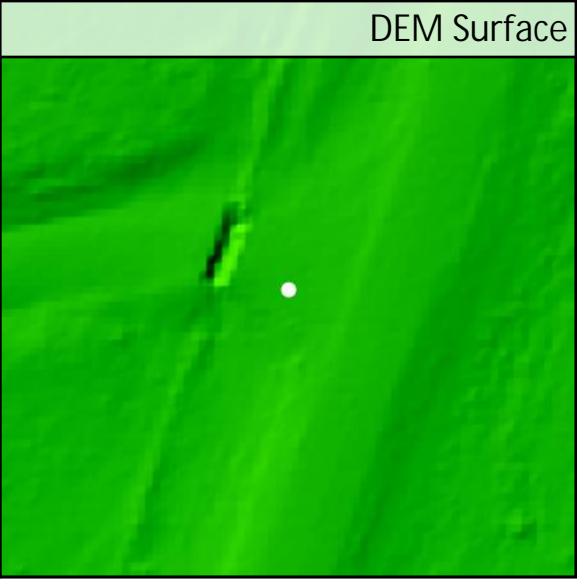
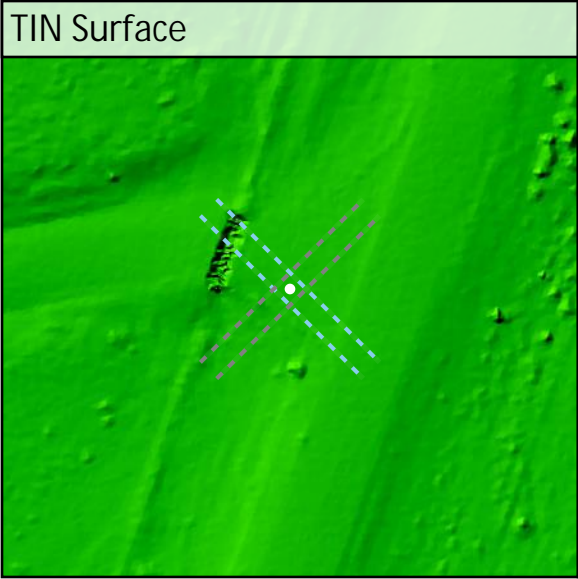
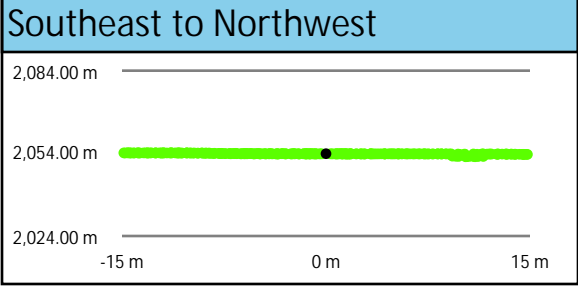
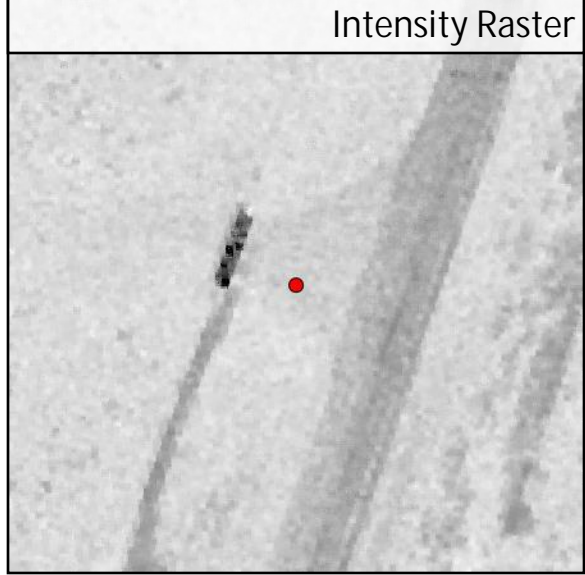
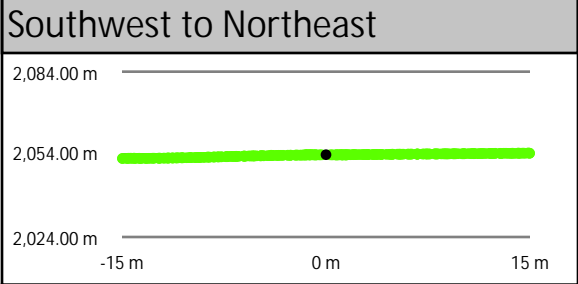
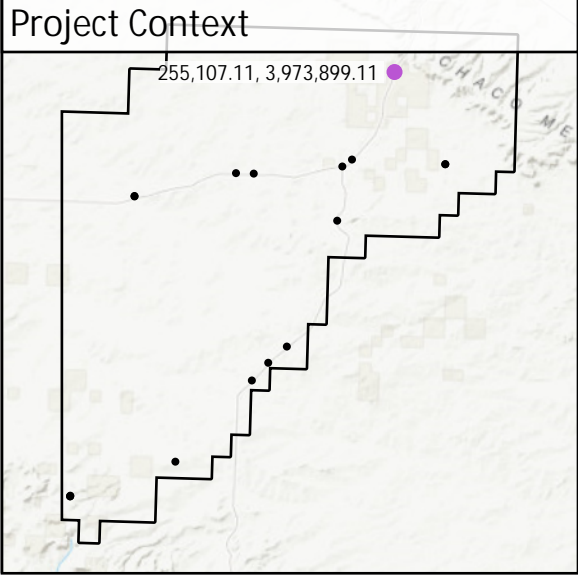
DEM Dz +0.00 m

CAL - CA085

All Points TIN Dz +0.00 m

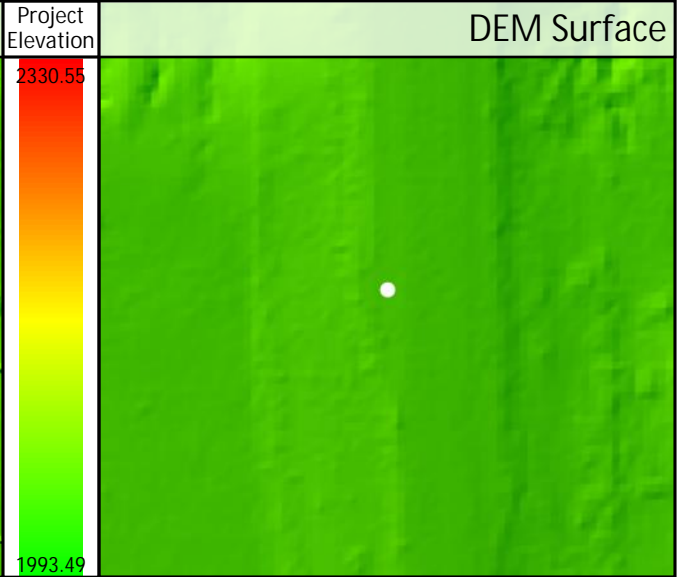
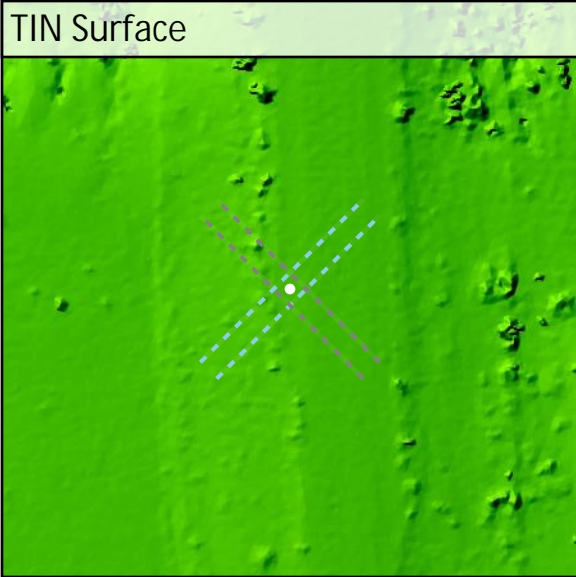
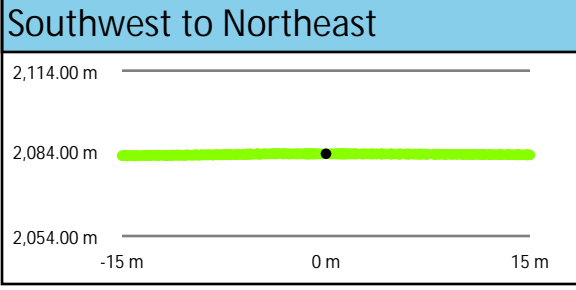
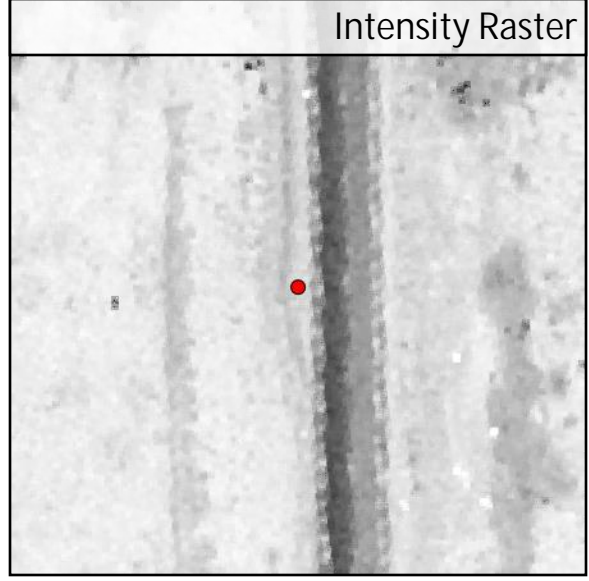
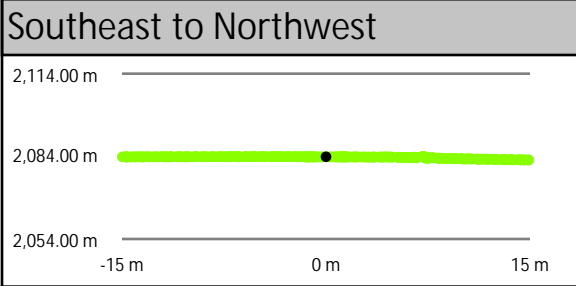
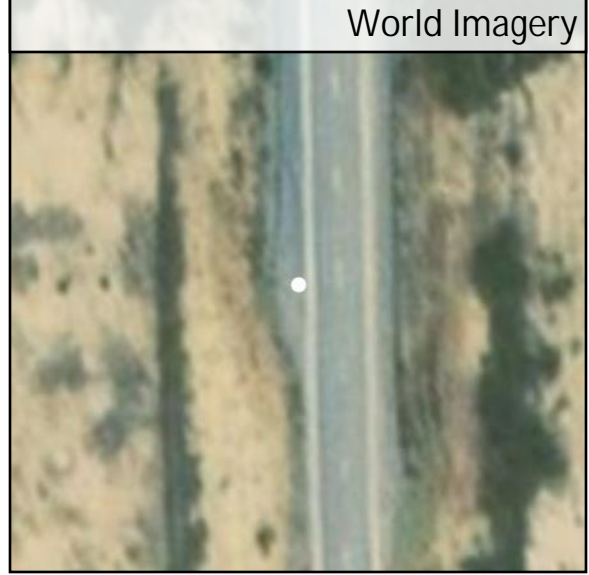
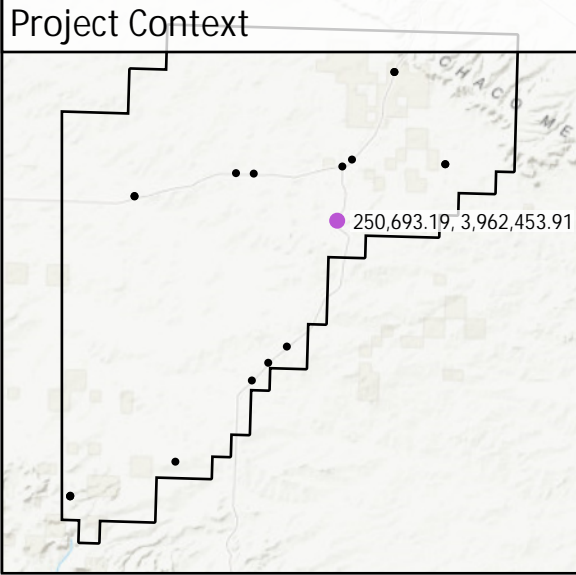
CA134

Known Z	2,053.87 m	Point Density	2.94 ppsm
DEM Dz	-0.06 m	Ground Density	2.94 ppsm
All Points TIN Dz	-0.06 m	Slope	2.74 °

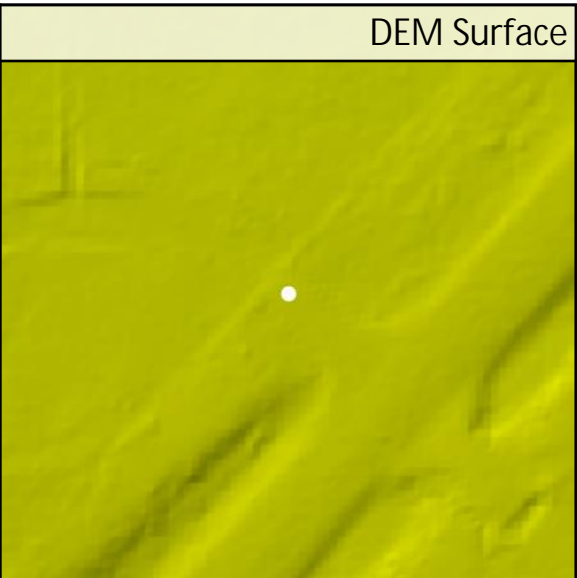
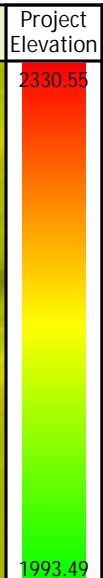
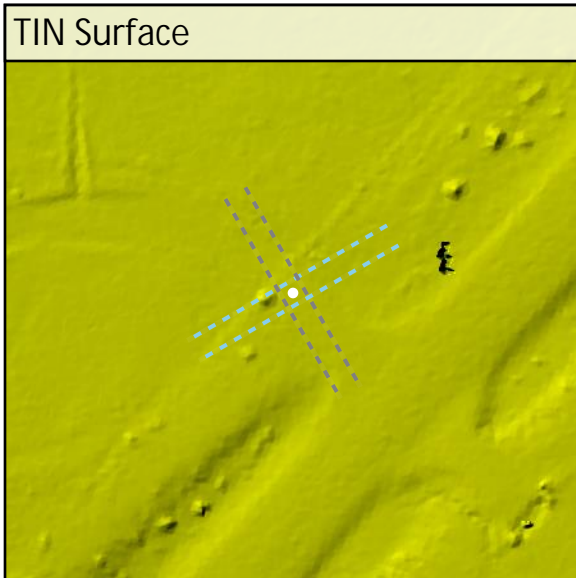
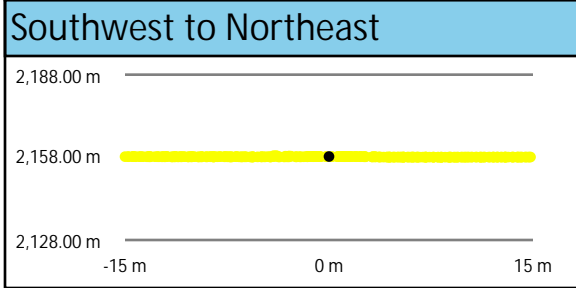
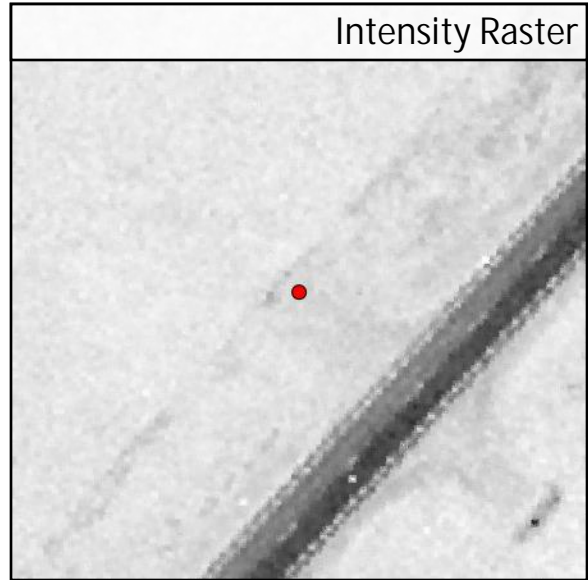
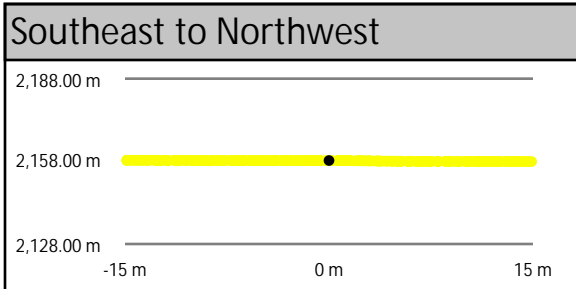
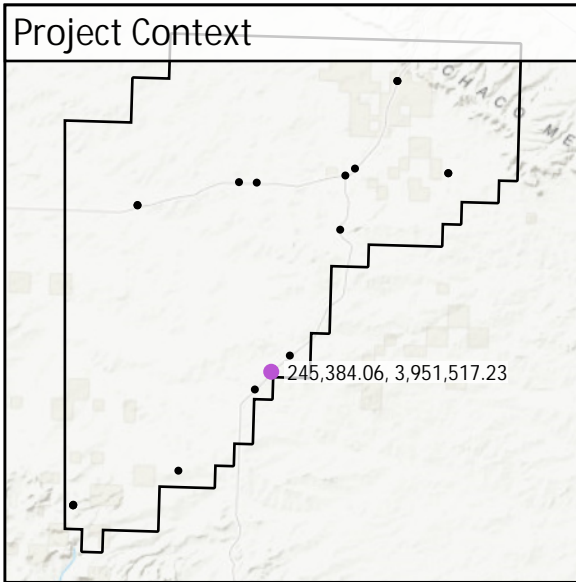


CA144

Known Z	2,083.84 m	Point Density	2.90 ppsm
DEM Dz	-0.05 m	Ground Density	2.90 ppsm
All Points TIN Dz	-0.05 m	Slope	1.17 °



CA217	Known Z	2,158.30 m	Point Density	3.04 ppsm
	DEM Dz	-0.04 m	Ground Density	3.04 ppsm
	All Points TIN Dz	-0.04 m	Slope	1.44 °



CA259

Known Z	2,031.57 m	Point Density	3.40 ppsm
DEM Dz	-0.05 m	Ground Density	3.40 ppsm
All Points TIN Dz	-0.05 m	Slope	2.52 °

