

# Classified Point Cloud

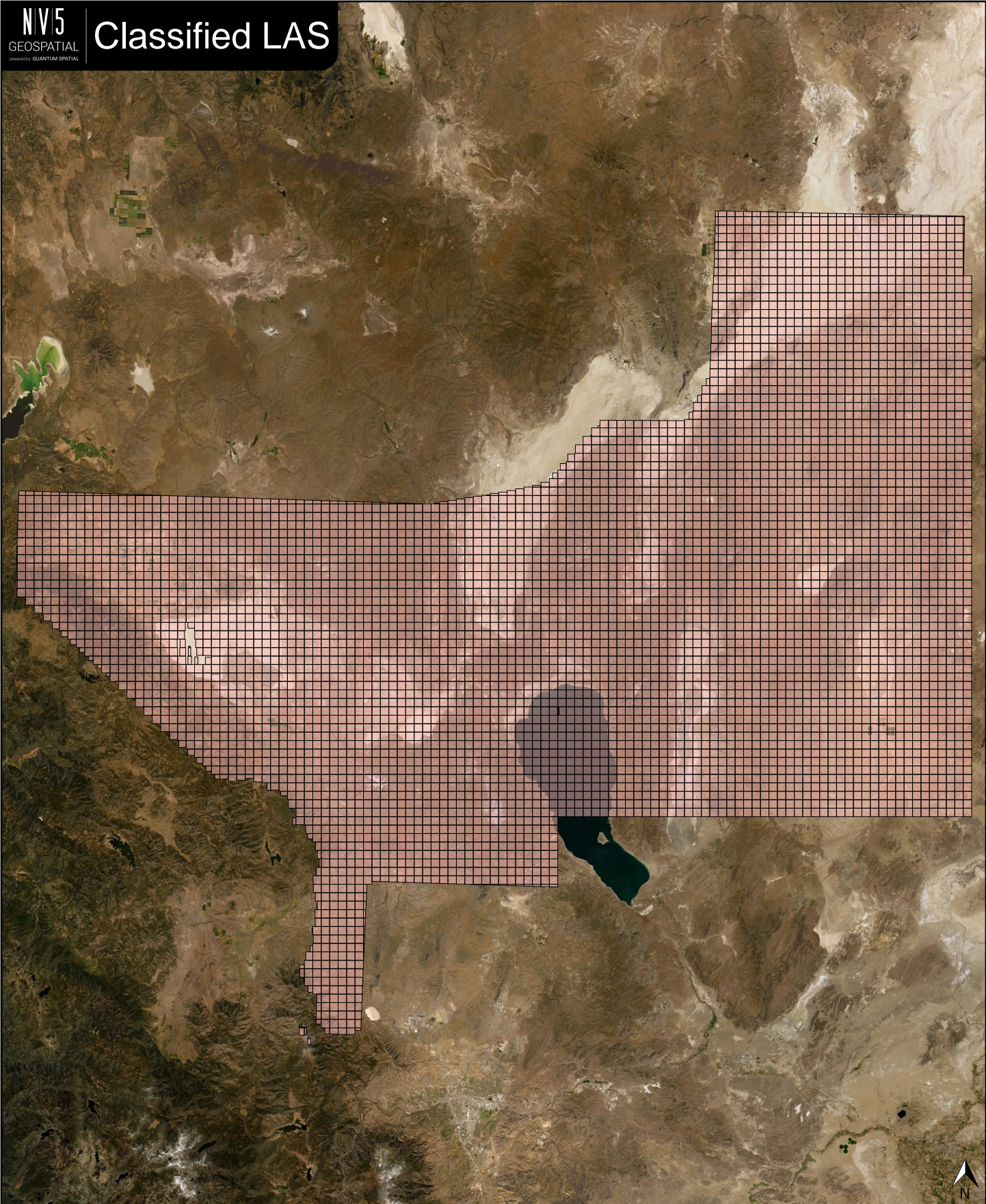
## Deliverable 1 Summary


<b>✓ General</b>		
Folder:	F:\198162\NV_WestCentralEarthMRI_4_2020_300xxx\point_cloud\tilecls	
Total # of Files:	5,539 (All Valid)	
Total File Size:	1.7 TB (1,834,677,424,618 bytes)	
<b>✓ Tile Sizes / Coordinate Ranges</b>		
Median Tile Size:	1,500m x 1,500m	
Minimum Tile Size:	8m x 8m	
Maximum Tile Size:	1,500m x 1,500m	
X Range:	181244.56m to 350999.99m	
Y Range:	4388712.90m to 4537027.35m	
Elevation Range (All Classes):	232.56m to 2737.19m	
<b>✓ LAS Version And Point Record Formats</b>		
v1.4, Point Record Format 6	5,539 of 5,539 Tiles	
<b>✓ Spatial Reference System</b>		
Horizontal Projection	NAD83(2011) / UTM zone 11N	5,539 of 5,539 Tiles
Valid OGC Name	Yes	5,539 of 5,539 Tiles
Horizontal Datum	NAD83 (National Spatial Reference System 2011)	5,539 of 5,539 Tiles
Horizontal Units	meter	5,539 of 5,539 Tiles
Vertical Datum	NAVD88 height - Geoid18 (m)	5,539 of 5,539 Tiles
Vertical Units	meter	5,539 of 5,539 Tiles
Vertical USGS-Compliant	Yes	5,539 of 5,539 Tiles
Geoid	Geoid18	5,539 of 5,539 Tiles
Storage Method	WKT	5,539 of 5,539 Tiles
Matches OGC Template	Yes	5,539 of 5,539 Tiles
<b>✓ GPS Time Type</b>		
Adjusted	5,539 of 5,539 Tiles	
<b>✓ File Source ID Equals 0</b>		
Yes	5,539 of 5,539 Tiles	
<b>✓ VLR/EVLR Reserved Equals 0</b>		
Yes	22,156 of 22,156 Records	
<b>✓ Unnecessary Bytes At End Of File</b>		
No	5,539 of 5,539 Tiles	
<b>✓ Legacy Point Count Check</b>		
Zero	5,539 of 5,539 Tiles	
<b>✓ System Identifier</b>		
Merge	5,539 of 5,539 Tiles	

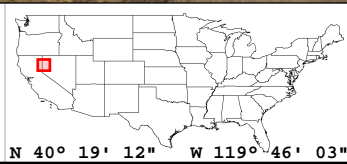
# Classified Point Cloud Continued...

Deliverable 1 Summary

✓ <b>Generating Software</b>	
LiDAR Suite	5,539 of 5,539 Tiles



 Classified LAS Tiles (5,539)

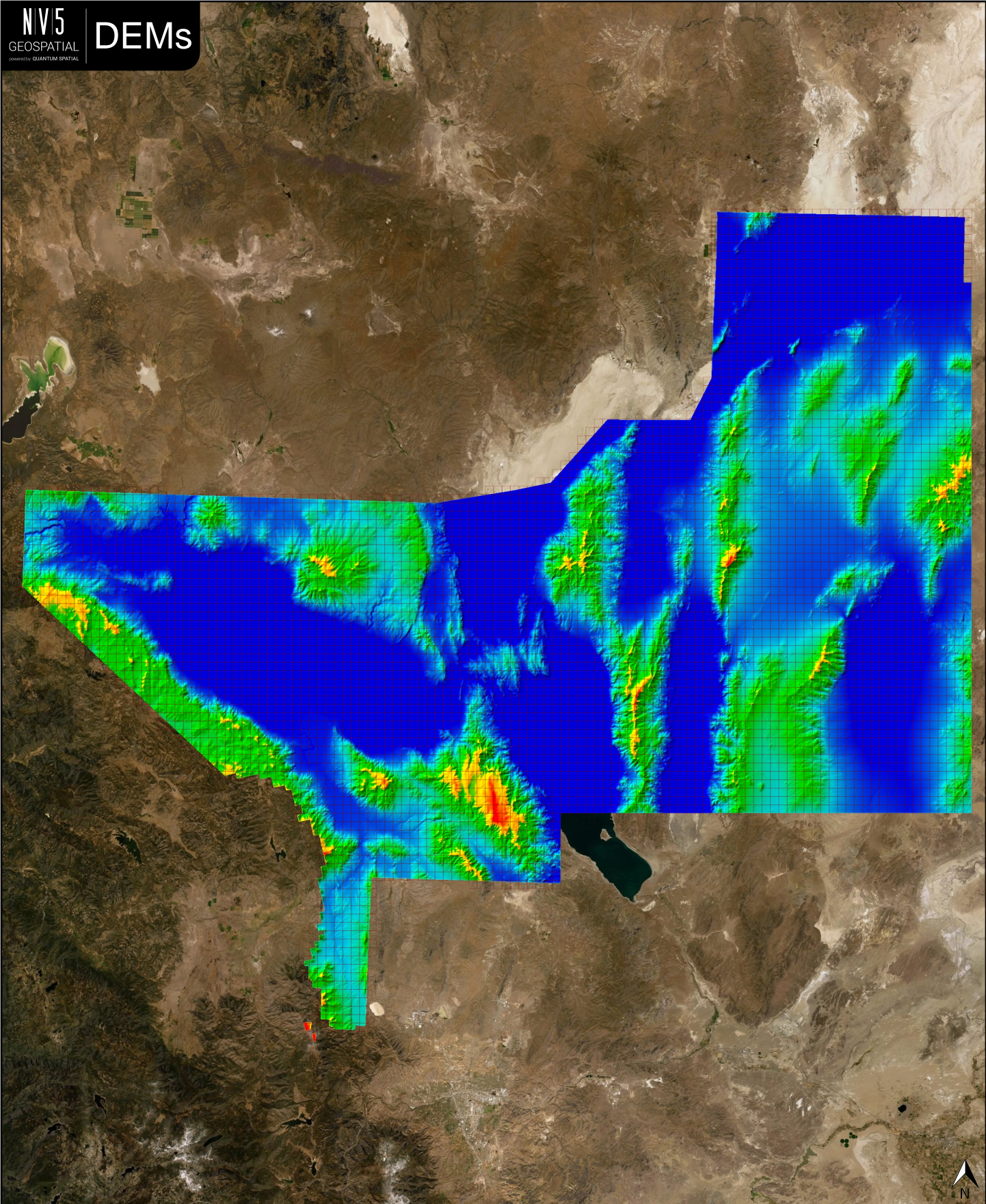


✓ General		
Folder:	F:\198162\NV_WestCentralEarthMRI_4_2020_300xxx\bare_earth\be_rasters	
Total # of Files:	5,540	(All Valid)
Total File Size:	48.7 GB	(52,316,635,440 bytes)

✓ Tile Sizes / Coordinate Ranges		
Median Tile Size:	1,500m x 1,500m	
Minimum Tile Size:	1,500m x 1,500m	
Maximum Tile Size:	1,500m x 1,500m	
X Range:	180000.00m to 351000.00m	
Y Range:	4387500.00m to 4537500.00m	

✓ Spatial Reference System		
Horizontal Projection	NAD83(2011) / UTM zone 11N	5,540 of 5,540 Tiles
Valid OGC Name	Yes	5,540 of 5,540 Tiles
Horizontal Datum	NAD83 (National Spatial Reference System 2011)	5,540 of 5,540 Tiles
Horizontal Units	meter	5,540 of 5,540 Tiles
Vertical Datum	NAVD88 height - Geoid18 (m)	5,540 of 5,540 Tiles
Vertical Units	meter	5,540 of 5,540 Tiles
Vertical USGS-Compliant	Yes	5,540 of 5,540 Tiles
GDAL 2.x Compatible	Yes	5,540 of 5,540 Tiles
Geoid	Geoid18	5,540 of 5,540 Tiles
Matches OGC Template	Yes	5,540 of 5,540 Tiles
GTCitationGeoKey (1026)	NAD83(2011) / UTM zone 11N + NAVD88 height - Geoid18 (m)	5,540 of 5,540 Tiles
VerticalCitationGeoKey (4097)	NAVD88 height - Geoid18 (m)	5,540 of 5,540 Tiles

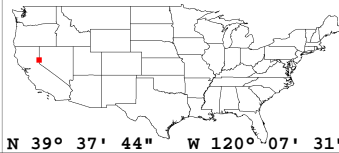
✓ Raster		
File Type:	TIF	5,540 of 5,540
Bands:	1	5,540 of 5,540
Grid Size (pixels):	1500 x 1500	5,540 of 5,540
Pixel Resolution:	1.00000000m x 1.00000000m	5,540 of 5,540
Pixel Type:	32-bit	5,540 of 5,540
Compression:	None	5,540 of 5,540
No Data Value:	-999999	5,540 of 5,540



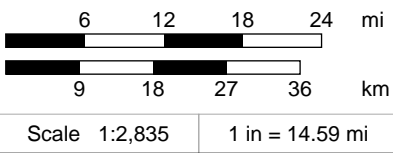
1148.81 m

1899.98 m

2651.14 m



N 39° 37' 44" W 120° 07' 31"

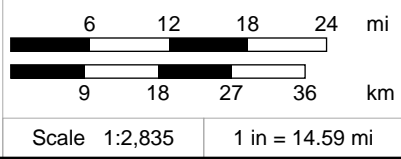
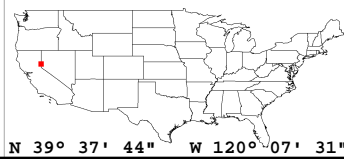
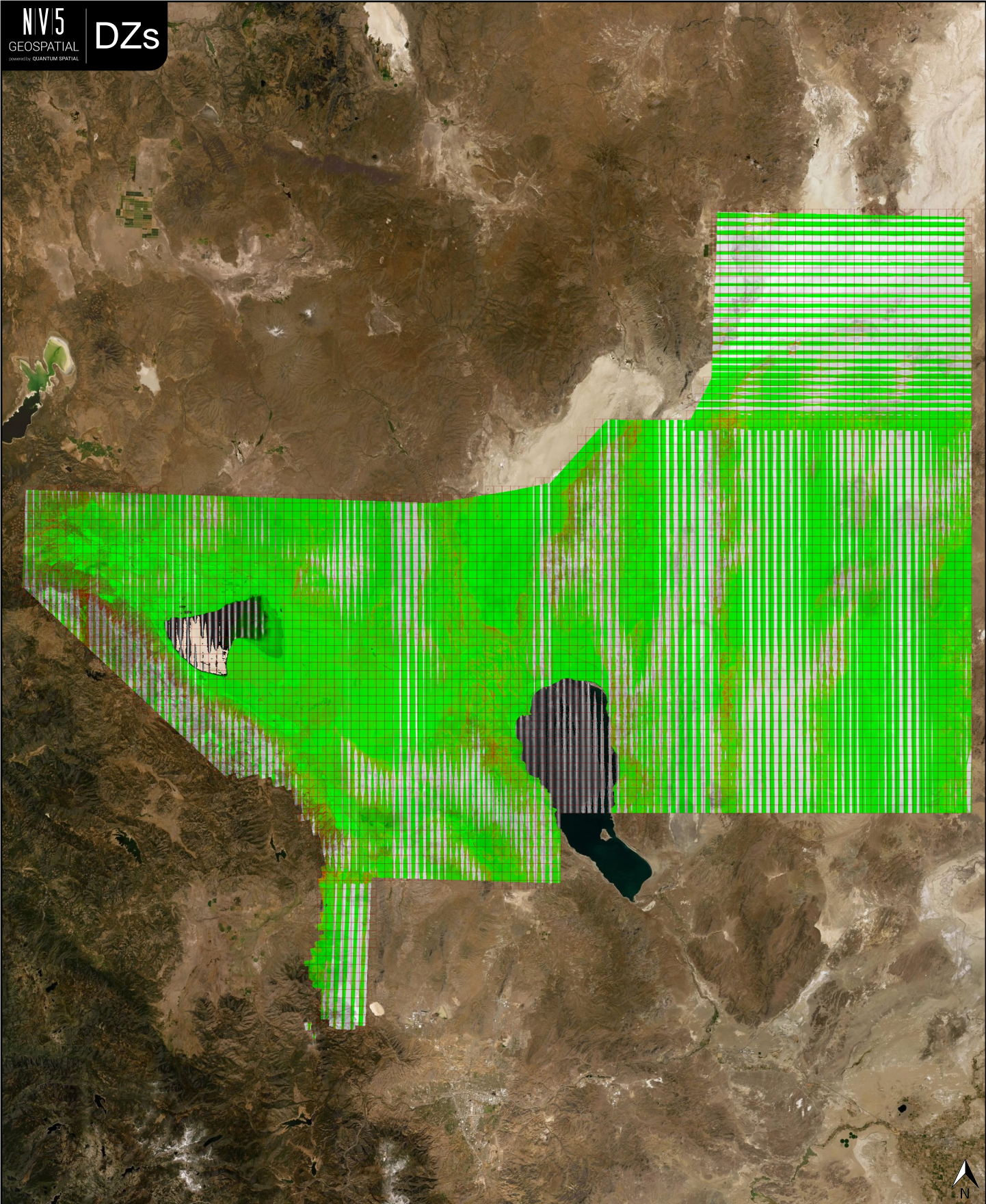


✓ General	
Folder:	F:\198162\NV_WestCentralEarthMRI_4_2020_300xxx\metadata\spatial_metadata\contractor_provided\swath_separation_images
Total # of Files:	5,539 (All Valid)
Total File Size:	36.5 GB (39,238,973,914 bytes)

✓ Tile Sizes / Coordinate Ranges	
Median Tile Size:	1,500m x 1,500m
Minimum Tile Size:	1,500m x 1,500m
Maximum Tile Size:	1,500m x 1,500m
X Range:	180000.00m to 351000.00m
Y Range:	4387500.00m to 4537500.00m

✓ Spatial Reference System		
Horizontal Projection	NAD83(2011) / UTM zone 11N	5,539 of 5,539 Tiles
Horizontal Datum	NAD83 (National Spatial Reference System 2011)	5,539 of 5,539 Tiles
Horizontal Units	meter	5,539 of 5,539 Tiles
Vertical Datum	NAVD88 height - Geoid18 (m)	5,539 of 5,539 Tiles
Vertical Units	meter	5,539 of 5,539 Tiles
Geoid	Geoid18	5,539 of 5,539 Tiles

✓ Raster		
File Type:	TIF	5,539 of 5,539
Bands:	3	5,539 of 5,539
Grid Size (pixels):	1500 x 1500	5,539 of 5,539
Pixel Resolution:	1.00000000m x 1.00000000m	5,539 of 5,539
Pixel Type:	8-bit (RGB)	5,539 of 5,539
Compression:	NONE	5,539 of 5,539
No Data Value:	0	5,539 of 5,539



✓ General	
Folder:	F:\198162\NV_WestCentralEarthMRI_4_2020_300xxx\other\intensity_images
Total # of Files:	5,539 (All Valid)
Total File Size:	12.2 GB (13,102,726,060 bytes)

✓ Tile Sizes / Coordinate Ranges	
Median Tile Size:	1,500m x 1,500m
Minimum Tile Size:	1,500m x 1,500m
Maximum Tile Size:	1,500m x 1,500m
X Range:	180000.00m to 351000.00m
Y Range:	4387500.00m to 4537500.00m

✓ Spatial Reference System		
Horizontal Projection	NAD83(2011) / UTM zone 11N	5,539 of 5,539 Tiles
Horizontal Datum	NAD83 (National Spatial Reference System 2011)	5,539 of 5,539 Tiles
Horizontal Units	meter	5,539 of 5,539 Tiles
Vertical Datum	NAVD88 height - Geoid18 (m)	5,539 of 5,539 Tiles
Vertical Units	meter	5,539 of 5,539 Tiles
Geoid	Geoid18	5,539 of 5,539 Tiles

✓ Raster		
File Type:	TIF	5,539 of 5,539
Bands:	1	5,539 of 5,539
Grid Size (pixels):	1500 x 1500	5,539 of 5,539
Pixel Resolution:	1.00000000m x 1.00000000m	5,539 of 5,539
Pixel Type:	8-bit Unsigned Integer (MINISBLACK)	5,539 of 5,539
Compression:	NONE	5,539 of 5,539
No Data Value:	0	5,539 of 5,539



