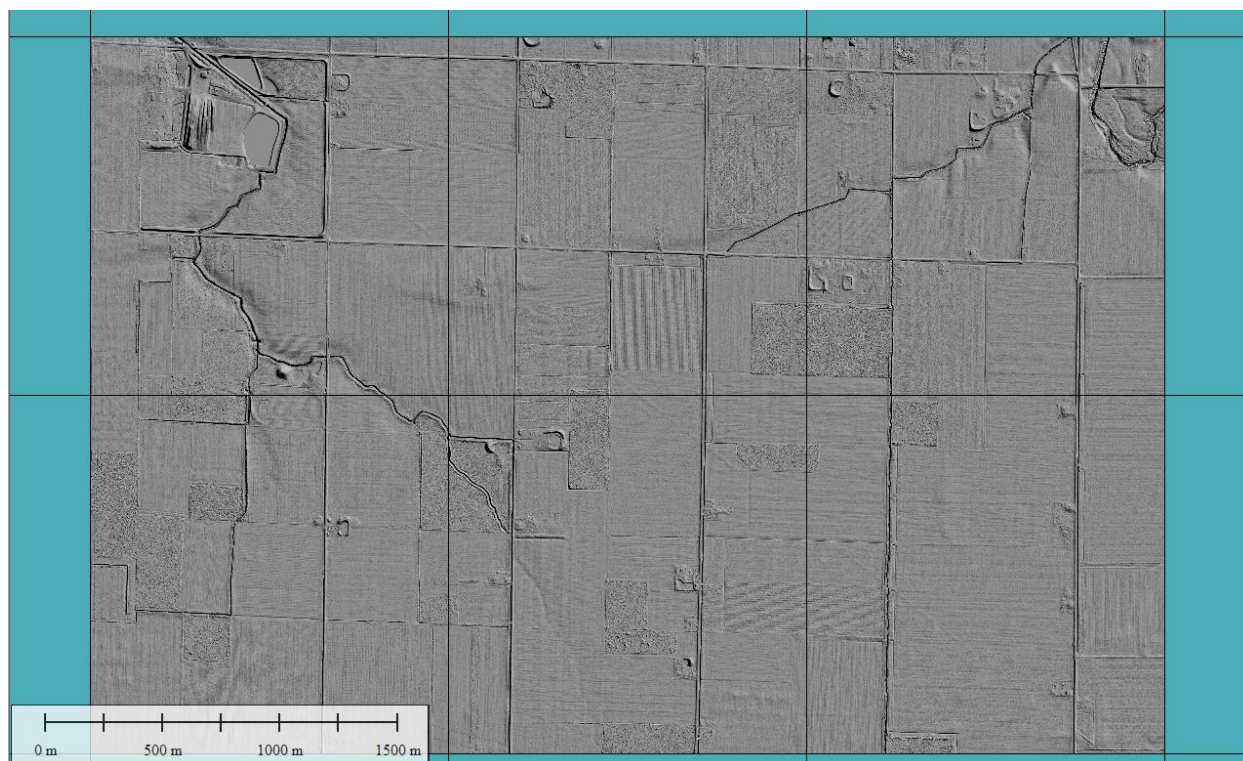




US Geological Survey  
National Geospatial Technical Operations Center  
1400 Independence Road  
Rolla, MO 65401

Date: 6/16/2016  
David Bergman  
CPT POC: Vincent

### OH\_LowerMaumee\_2016 Pilot



## DELIVERABLES from Woolpert:

- Classified\_LAS : 6 .LAS files
- Raster\_DEM: 6 IMG files
- Intensity: 6 TIFF files
- Tile\_Index shapefile
- Breaklines: 2 Shapefiles, one is Polygon\_Z
- Reports:
  - \* OH\_Lower Maumee Lidar\_2016\_B16 Task Order
  - \* Preliminary\_Vertical\_Accuracy\_Statement

---

## PILOT DATA INFORMATION

Lidar Base Specification Version Applicable to Project: 1.2

Pilot Area: 13.93 square kilometer

Coordinate System: NAD\_1983\_2011\_StatePlane\_Ohio\_North\_FIPS\_3401\_Ft\_US / NAVD88 - Geoid12B (Feet)

Grid Size: 2.5 feet

Tile Size: 1.524 kilometers

NPS: 0.7 meters, QL 2

LAS Version: 1.4, Point Record Format 6

LAS Classifications Used in Pilot data: 1,2,7,9,10,17,18

---

## SUMMARY

LAS Summary:

- LAS files conform to coordinate system and tile index
- **The ESRI format of WELL-KNOWN-TEXT renders the project rejectable.** The WKT format must be 2001 OGC.
- LAS Classifications follow USGS standard values
- LAS files delivered contain classes 1, 2, 7, 9, 10, 17, 18

DEM Summary:

- All DEM tiles conform to the coordinate system and tile index
- There are no areas of concern regarding the DEM

Breakline Summary:

- Breaklines conform to the given coordinate system
- HydroBreaklines captured as PolygonZ
- Bridge breaklines are given as points in a shapefile
- Breaklines delivered for the pilot area are complete

#### Tile Index Extent (Shapefile):

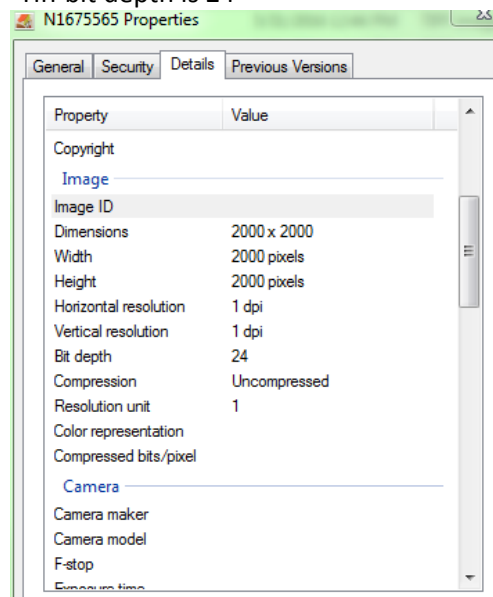
- Tile Index conforms to the given coordinate system
- Tiles are uniform in size

#### Metadata:

- There are no XML metadata files
- The Task Order states that Collection, Survey, Processing, and QA/QC reports will be delivered

#### Intensity Imagery:

- Tiff bit depth is 24



The Pilot Report notes inconsistencies between the Lidar Base Specification v1.2 noted in the Task Order, Contract, or Statement of Work plus any additional requirements these documents may have and the pilot data delivery. Any inconsistency noted is for informational purposes only when processing the rest of the project. No corrections are required to be delivered for pilot projects. Merely implement the corrections when the pilot data is delivered as a part of the project whole.